



PENNSYLVANIA  
ECONOMY LEAGUE

Information, Insight, Integrity.

BOYERTOWN AREA  
SCHOOL DISTRICT

A Comprehensive Updated Analysis of Demographics,  
Housing and Related Activities, and Other Relevant  
Factors and Aggregate Districtwide Projections of K-12  
Enrollments in the Boyertown School District

October 2025

## Contents

Chapter 1 Demographic Trends .....	3
Introduction .....	3
About the Boyertown Area School District .....	4
Population .....	5
Housing.....	8
Occupancy Status.....	10
Housing Tenure .....	10
Housing Development.....	11
Birth Patterns .....	12
Migration Patterns.....	16
Enrollment Changes by Grade and Class .....	17
Chapter 2 Enrollment Trends and Projections .....	20
Historical Trends.....	20
Grade Progression Ratio History .....	22
Kindergarten Enrollment to Births Ratio History.....	25
2025-26 Actuals vs. Projection .....	26
Enrollment Projections – Primary Period .....	27
Enrollment Projections – Extended Period .....	29
Enrollment Projections Alternative Scenarios .....	32
Projections by Grade and Building.....	37
<i>Assumptions</i> .....	37
Projections by Municipality.....	43
<i>Assumptions</i> .....	43
Chapter 3 Perspective on Accuracy .....	49

Introduction .....49

Accuracy of PEL Enrollment Studies Catalog.....49

Accuracy of Past Boyertown School District Enrollment Studies.....50

Other Considerations.....50

## Chapter 1 Demographic Trends

### Introduction

Boyertown Area School District spans approximately 100 square miles across Berks and Montgomery counties and includes ten municipalities. Since 1970, the district's population has nearly doubled, growing from 26,700 to nearly 50,000 by 2020, with the most significant increases occurring in Montgomery County townships such as Douglass, New Hanover, and Upper Frederick. Boyertown Borough, however, experienced a population decline before modest recovery.

The age distribution has shifted over time, with notable growth in the senior population (65+), which increased by over 5,400 residents from 2000 to 2023. The working-age population also grew, while the number of school-age children (5–17) saw a slight decline in recent years. Enrollment as a percentage of the school-age population has decreased from 83.5% in 2000 to 79.7% in 2023, and the district is graduating more seniors than it is enrolling kindergartners, suggesting a potential future decline in student numbers.

Housing development has been robust, with the number of housing units more than doubling since 1970. Most of this growth occurred in Montgomery County, particularly in New Hanover Township. Despite the increase in housing, the number of students per housing unit has declined significantly—from 80 students per 100 units in 1970 to just 32 in 2023. Vacancy rates have also risen slightly, and the majority of homes remain owner-occupied. Housing tenure data shows a stable community, with over 73% of households having moved in before 2010.

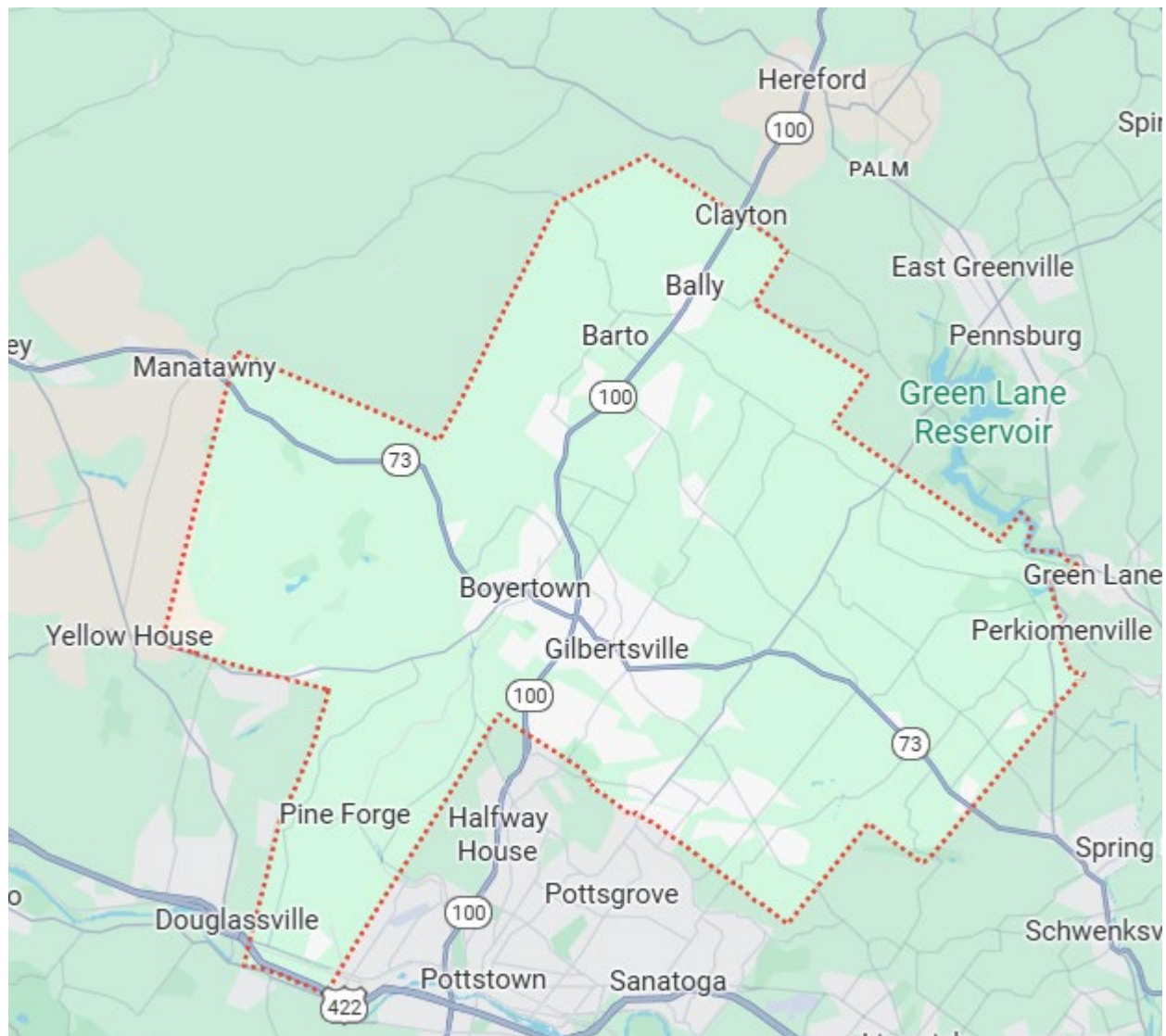
Several new housing developments are in planning stages, including large projects in Gilbertsville, but their impact on enrollment is uncertain due to potential delays or changes in development plans. Birth rates in the district have fluctuated over the decades, peaking in 2006 and reaching a low in 2010. While recent years show a modest rebound, overall birth rates per 1,000 residents and housing units have declined, which may limit future enrollment growth.

Migration has played a significant role in population growth, contributing over 5,500 new residents since 1990. Enrollment figures consistently exceed cumulative birth counts, indicating net immigration and the presence of alternative education options such as private, charter, and homeschool programs. The district's enrollment trends by grade show fluctuations, with gains typically in early elementary grades and declines in high school years. Overall, the district faces demographic shifts that suggest a need for strategic planning to address changing enrollment patterns and community needs.

## About the Boyertown Area School District

The Boyertown Area School District is located about 45 miles northwest of Center City Philadelphia, 25 miles south of Allentown, and 20 miles east of Reading. The district encompasses approximately 100 square miles in Berks and Montgomery counties and is comprised of 10 municipalities: the boroughs of Bally, Bechtelsville, and Boyertown, and the townships of Colebrookdale, Douglass, Earl, and Washington in Berks County and the townships of Douglass, New Hanover, and Upper Frederick in Montgomery County. The Berks County portion of the district represents just over one-half of the district's land area.

**Figure 1.1 Boyertown Area School District and Neighboring School Districts**



Source: Google Maps

## Population

Population in the Boyertown Area district has nearly doubled since 1970, increasing from 26,700 to 49,959 in 2020. The largest growth occurred in the Montgomery County townships of Douglass, New Hanover and Upper Frederic. Boyertown Borough decreased from the high in 1970 of 4,428 to a low of 3,759 in 1990. Since then, it has grown to 4,264.

**Table 1.1 Population Trend 1970 to 2020**

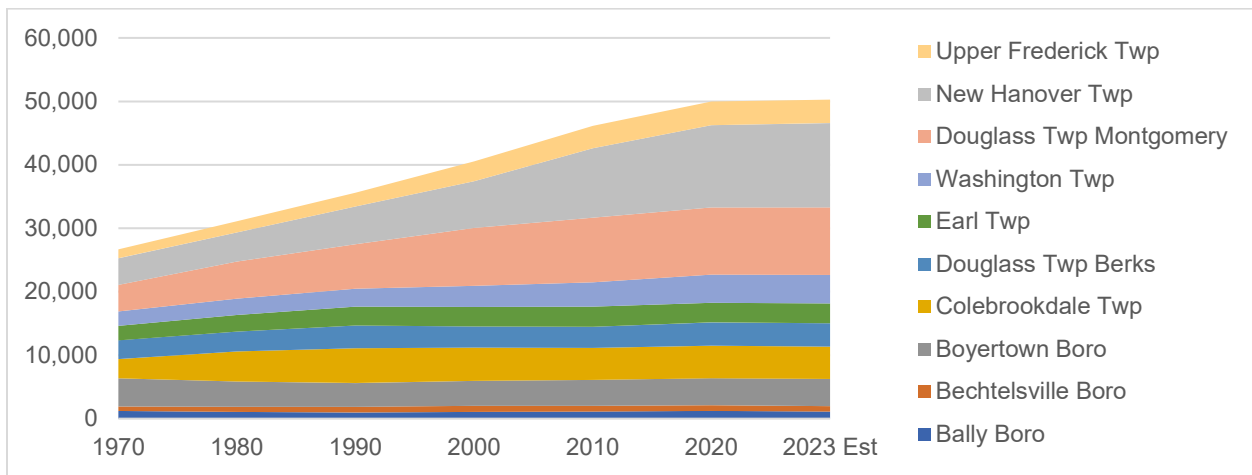
Municipality	1970	1980	1990	2000	2010	2020	Change 1970-2020	
							#	%
Bally Boro	1,197	1,051	973	1,062	1,090	1,228	31	2.6
Bechtelsville Boro	728	832	884	931	942	884	156	21.4
Boyertown Boro	4,428	3,979	3,759	3,940	4,055	4,264	-164	-3.7
Coalbrookdale Twp	3,034	4,748	5,469	5,270	5,078	5,112	2,078	68.5
Douglass Twp	2,944	3,128	3,570	3,327	3,306	3,670	726	24.7
Earl Twp	2,290	2,607	3,016	3,050	3,195	3,097	807	35.2
Washington Twp	2,273	2,568	2,779	3,354	3,810	4,443	2,170	95.5
<b>Total Berks County</b>	<b>16,894</b>	<b>18,913</b>	<b>20,450</b>	<b>20,934</b>	<b>21,476</b>	<b>22,698</b>	<b>5,804</b>	<b>34.4</b>
Douglass Twp	4,177	5,833	7,048	9,104	10,195	10,585	6,408	153.4
New Hanover Twp	4,211	4,623	5,956	7,369	10,939	12,973	8,762	208.1
Upper Frederick Twp	1,418	1,759	2,165	3,141	3,523	3,703	2,285	161.1
<b>Total Montgomery County</b>	<b>9,806</b>	<b>12,215</b>	<b>15,169</b>	<b>19,614</b>	<b>24,657</b>	<b>27,261</b>	<b>17,455</b>	<b>178</b>
<b>Total Population</b>	<b>26,700</b>	<b>31,128</b>	<b>35,619</b>	<b>40,548</b>	<b>46,133</b>	<b>49,959</b>	<b>23,259</b>	<b>87.1</b>
	<b>Percent of Total Population</b>							
Bally Boro	4.5	3.4	2.7	2.6	2.4	2.5		
Bechtelsville Boro	2.7	2.7	2.5	2.3	2.0	1.8		
Boyertown Boro	16.6	12.8	10.6	9.7	8.8	8.5		
Colebrookdale Twp	11.4	15.3	15.4	13.0	11.0	10.2		
Douglass Twp	11.0	10.0	10.0	8.2	7.2	7.3		
Earl Twp	8.6	8.4	8.5	7.5	6.9	6.2		
Washington Twp	8.5	8.2	7.8	8.3	8.3	8.9		
<b>Total Berks County</b>	<b>63.3</b>	<b>60.8</b>	<b>57.4</b>	<b>51.6</b>	<b>46.6</b>	<b>45.4</b>		
Douglass Twp	15.6	18.7	19.8	22.5	22.1	21.2		
New Hanover Twp	15.8	14.9	16.7	18.2	23.7	26.0		
Upper Frederick Twp	5.3	5.7	6.1	7.7	7.6	7.4		
<b>Total Montgomery County</b>	<b>36.7</b>	<b>39.2</b>	<b>42.6</b>	<b>48.4</b>	<b>53.4</b>	<b>54.6</b>		
<b>Total Population</b>	<b>100.0</b>	<b>100.0</b>	<b>100.0</b>	<b>100.0</b>	<b>100.0</b>	<b>100.0</b>		

Population in the Boyertown Area district is estimated to have increased from 2020 to 2023 by 317 residents with most growth estimated in New Hanover Township.

**Table 1.2 Population Trend 2020 to 2023 Estimate**

Municipality	County	2020	2023 Est	Change 2020-23	
				#	%
Bally Boro	Berks	1,228	1,129	-99	-8.1
Bechtelsville Boro	Berks	884	848	-36	-4.1
Boyertown Boro	Berks	4,264	4,264	0	0.0
Colebrookdale Twp	Berks	5,112	5,107	-5	-0.1
Douglass Twp	Berks	3,670	3,705	35	1.0
Earl Twp	Berks	3,097	3,107	10	0.3
Washington Twp	Berks	4,443	4,469	26	0.6
Douglass Twp	Montgomery	10,585	10,668	83	0.8
New Hanover Twp	Montgomery	12,973	13,276	303	2.3
Upper Frederick Twp	Montgomery	3,703	3,703	0	0.0
<b>Total</b>		<b>49,959</b>	<b>50,276</b>	<b>317</b>	<b>0.6</b>

**Figure 1.2 Population Trend 1970 to 2023**

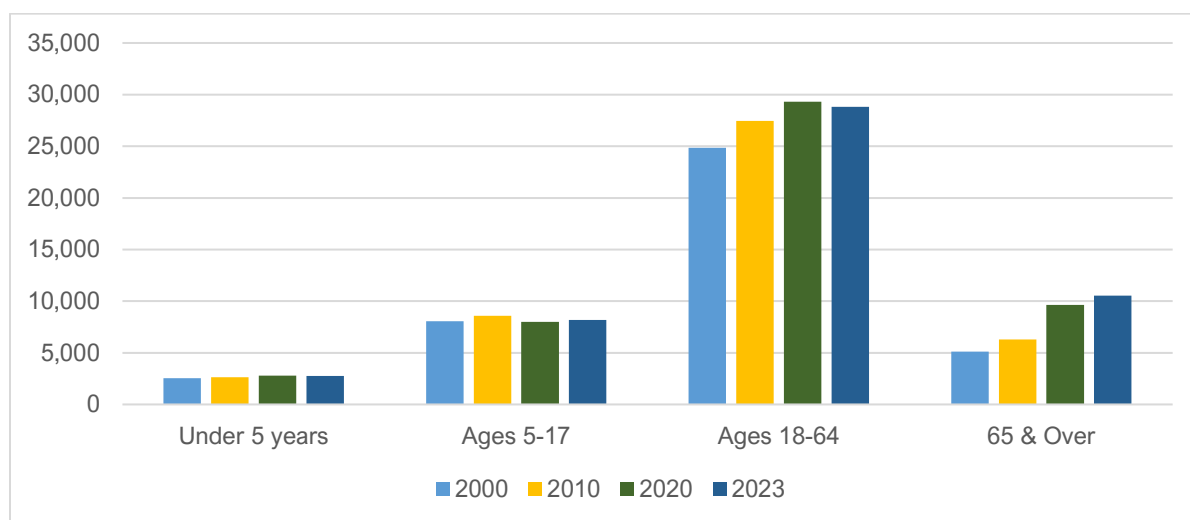


As the district’s total population has grown, its age distribution has shifted slightly. The under 5 population increased from 2000 to 2023 by 205 children. The 5-17 age group accounts for almost 20% of the total population in 2023. This group had an increase from 2000-2010 of 520 children but lost 417 from 2010 to 2023. The 18-64 cohort (working age) added 3,959 residents from 2000 -2023. The 65 and older age group increased from 2000 to 2023 by 5,417.

Table 1.3 Population Trends by Age Cohort 2000 to 2023<sup>1</sup>

Age Group	Total Population					Percent of Total			
	2000	2010	2020	2023	Change 2000 - 2023	2000	2010	2020	2023
Under 5 years	2,548	2,647	2,783	2,753	205	8.1	8.9	9.0	7.6
Ages 5-17	8,072	8,592	8,001	8,175	103	20.1	17.9	18.6	19.9
Ages 18-64	24,846	27,440	29,321	28,805	3,959	60.9	64.1	61.3	60.9
65 & over	5,126	6,284	9,623	10,543	5,417	10.9	9.1	11.1	11.6
<b>Total</b>	<b>40,592</b>	<b>44,963</b>	<b>49,728</b>	<b>50,276</b>	<b>9,684</b>	<b>100.0</b>	<b>100.0</b>	<b>100.0</b>	<b>100.0</b>
	Total Change					Percent Change			
	2000 - 2010	2010 - 2020	2020 - 2023	2000 - 2023	2000 - 2010	2010 - 2020	2020 - 2023	2000 - 2023	
Under 5 years	99	136	-30	205	3.9	5.1	-1.1	7.4	
Ages 5-17	520	-591	174	103	6.4	-6.9	2.2	1.3	
Ages 18-64	2,594	1,881	-516	3,959	10.4	6.9	-1.8	13.7	
65 & over	1,158	3,339	920	5,417	22.6	53.1	9.6	51.4	
<b>Total</b>	<b>4,371</b>	<b>4,765</b>	<b>548</b>	<b>9,684</b>	<b>10.8</b>	<b>10.6</b>	<b>1.1</b>	<b>19.3</b>	

Figure 1.3 Population by Age Group 2000 to 2023



District enrollments as a percentage of the area's age 5-17 population cohort have decreased from 83.5 percent in 2000 to 79.7 percent in 2023.

Table 1.4 Population by Age Group, October 1 Enrollments 2000 to 2023

	2000	2010	2020	2023	Change 2000 - 2023	
					#	%
Population Age 5-17	8,072	8,592	8,001	8,175	103	1.3
Oct 1 Enrollment	6,742	7,099	6,500	6,514	-228	-3.4
Enrollment % of Population	83.5	82.6	81.2	79.7		

<sup>1</sup>Census Data for 2000-2020; ACS 2023 5-year for 2023 unless noted.

## Housing

Housing units in the district more than doubled since 1970, increasing from 8,428 to 19,893 or 136.0 percent. The largest growth occurred in the Montgomery County townships of Douglass, New Hanover and Upper Frederick. The townships in Berks County also showed significant growth.

**Table 1.5 Housing Unit Trends, 1970 - 2020**

Municipality	1970	1980	1990	2000	2010	2020	Change 1970-2020	
							#	%
Bally Boro	338	359	370	426	457	497	159	47.0
Bechtelsville Boro	241	284	318	366	372	372	131	54.4
Boyertown Boro	1,658	1,728	1,713	1,885	2,026	2,062	404	24.4
Coalbrookdale Twp	919	1,630	1,943	2,030	2,077	2,125	1,206	131.2
Douglass Twp	850	1,062	1,228	1,239	1,269	1,365	515	60.6
Earl Twp	742	922	1,108	1,202	1,277	1,366	624	84.1
Washington Twp	667	848	969	1,250	1,508	1,822	1,155	173.2
<b>Total Berks Cty</b>	<b>5,415</b>	<b>6,833</b>	<b>7,649</b>	<b>8,398</b>	<b>8,986</b>	<b>9,609</b>	<b>4,194</b>	<b>77.5</b>
Douglass Twp	1,346	1,981	2,559	3,292	3,740	3,961	2,615	194.3
New Hanover Twp	1,229	1,550	2,076	2,615	3,919	4,670	3,441	280.0
Upper Frederick Twp	438	575	707	1,088	1,450	1,653	1,215	277.4
<b>Total Montgomery Cty</b>	<b>3,013</b>	<b>4,106</b>	<b>5,342</b>	<b>6,995</b>	<b>9,109</b>	<b>10,284</b>	<b>7,271</b>	<b>241.3</b>
<b>Total Housing Units</b>	<b>8,428</b>	<b>10,939</b>	<b>12,991</b>	<b>15,393</b>	<b>18,095</b>	<b>19,893</b>	<b>11,465</b>	<b>136.0</b>
<b>Percent of Total Housing Units</b>								
Bally Boro	4.0	3.3	2.8	2.8	2.5	2.5		
Bechtelsville Boro	2.9	2.6	2.4	2.4	2.1	1.9		
Boyertown Boro	19.7	15.8	13.2	12.2	11.2	10.4		
Colebrookdale Twp	10.9	14.9	15.0	13.2	11.5	10.7		
Douglass Twp	10.1	9.7	9.5	8.0	7.0	6.9		
Earl Twp	8.8	8.4	8.5	7.8	7.1	6.9		
Washington Twp	7.9	7.8	7.5	8.1	8.3	9.2		
<b>Total Berks Cty</b>	<b>64.3</b>	<b>62.5</b>	<b>58.9</b>	<b>54.6</b>	<b>49.7</b>	<b>48.3</b>		
Douglass Twp	16.0	18.1	19.7	21.4	20.7	19.9		
New Hanover Twp	14.6	14.2	16.0	17.0	21.7	23.5		
Upper Frederick Twp	5.2	5.3	5.4	7.1	8.0	8.3		
<b>Total Montgomery Cty</b>	<b>35.7</b>	<b>37.5</b>	<b>41.1</b>	<b>45.4</b>	<b>50.3</b>	<b>51.7</b>		
<b>Total Housing Units</b>	<b>100.0</b>	<b>100.0</b>	<b>100.0</b>	<b>100.0</b>	<b>100.0</b>	<b>100.0</b>		

Estimates for 2023 add an additional 300 to the total housing units with Douglas Township (Berks) adding the most units at 215. Boyertown Borough estimates grew by 55 units.

**Table 1.6 Housing Trends 2020 to 2023 Estimate**

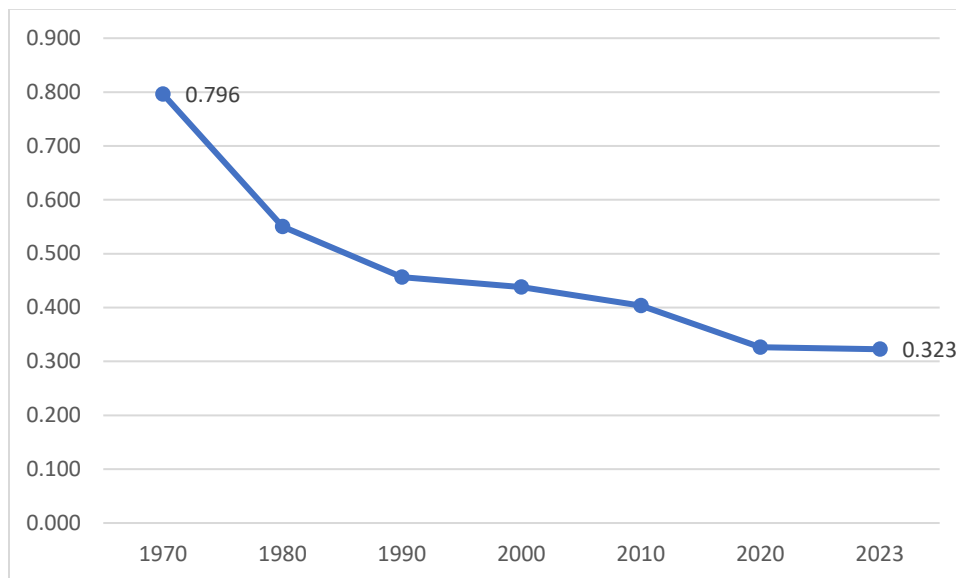
Municipality	County	2020	2023 Est	Change 2020-23	
				#	%
Bally Boro	Berks	497	504	7	1.4
Bechtelsville Boro	Berks	372	363	-9	-2.4
Boyertown Boro	Berks	2,062	2,117	55	2.7
Colebrookdale Twp	Berks	2,125	2,046	-79	-3.7
Douglass Twp	Berks	1,365	1,580	215	15.8
Earl Twp	Berks	1,366	1,181	-185	-13.5
Washington Twp	Berks	1,822	1,953	131	7.2
Douglass Twp	Montgomery	3,961	4,098	137	3.5
New Hanover Twp	Montgomery	4,670	4,812	142	3.0
Upper Frederick Twp	Montgomery	1,653	1,539	-114	-6.9
<b>Total</b>		<b>19,893</b>	<b>20,193</b>	<b>300</b>	<b>1.5</b>

The relationship between housing units and district enrollments has been decreasing since 1970. In 1970 there were approximately 80 students per 100 housing units. That number dropped to 32 in 2023.

**Table 1.7 Relationship of Public School Enrollments to Housing Units, 1970 to 2023**

	1970	1980	1990	2000	2010	2020	2023
Housing Units	8,428	10,939	12,991	15,393	18,095	19,893	20,193
District Enrollments	6,710	6,018	5,927	6,742	7,099	6,500	6,514
<b>Pupils per Unit</b>	0.796	0.550	0.456	0.438	0.392	0.327	0.323

**Figure 1.4 Relationship of Public School Enrollments to Housing Units**



## Occupancy Status

As the housing stock increased the vacancy rate in the district has also increased, from 3.1% in 2000 to 5.0% in 2020.

**Table 1.8 Occupancy Status, 2000 – 2020**

	Housing Units			Percent of Total		
	2000	2010	2020	2000	2010	2020
<b>Total Units</b>	15,393	17,660	20,076			
<b>Occupied</b>	14,914	16,866	19,068	96.9%	95.5%	95.0%
<b>Owner Occupied</b>	12,252	14,099	15,838	79.6%	79.8%	78.9%
<b>Rental</b>	2,662	2,767	3,230	17.3%	15.7%	16.1%
<b>Vacant</b>	479	794	1,008	3.1%	4.5%	5.0%

## Housing Tenure

Housing tenure in the district shows a stable housing market with more than 73% of households having moved into the district prior to 2010.

**Table 1.9 Boyertown Housing Tenure**

Municipality	Occupied housing units	Moved in 2019 or later	Moved in 2010 to 2018	Moved in 2000 to 2009	Moved in 1990 to 1999	Moved in 1989 and earlier	Moved in 2019 or later	Moved in 2010 to 2018	Moved in 2000 to 2009	Moved in 1990 to 1999	Moved in 1989 and earlier
Bally Boro	491	19	234	85	69	84	3.9%	47.7%	17.3%	14.1%	17.1%
Bechtelsville Boro	349	5	148	53	69	74	1.4%	42.4%	15.2%	19.8%	21.2%
Boyertown Boro	2,012	42	1,220	324	183	243	2.1%	60.6%	16.1%	9.1%	12.1%
Colebrookdale Twp	2,025	9	421	749	330	516	0.4%	20.8%	37.0%	16.3%	25.5%
Douglass Twp	1,321	14	456	330	204	317	1.1%	34.5%	25.0%	15.4%	24.0%
Earl Twp	1,319	52	339	349	159	420	3.9%	25.7%	26.5%	12.1%	31.8%
Washington Twp	1,768	0	477	473	249	569	0.0%	27.0%	26.8%	14.1%	32.2%
<b>Total Berks Cty</b>	<b>9,285</b>	<b>141</b>	<b>3,295</b>	<b>2,363</b>	<b>1,263</b>	<b>2,223</b>	<b>1.5%</b>	<b>35.5%</b>	<b>25.4%</b>	<b>13.6%</b>	<b>23.9%</b>
Douglass Twp	3,759	54	1,298	1,132	557	718	1.4%	34.5%	30.1%	14.8%	19.1%
New Hanover Twp	4,526	122	1,547	1,765	459	633	2.7%	34.2%	39.0%	10.1%	14.0%
Upper Frederick Twp	1,498	15	608	483	222	170	1.0%	40.6%	32.2%	14.8%	11.3%
<b>Total Montgomery Cty</b>	<b>9,783</b>	<b>191</b>	<b>3,453</b>	<b>3,380</b>	<b>1,238</b>	<b>1,521</b>	<b>2.0%</b>	<b>35.3%</b>	<b>34.5%</b>	<b>12.7%</b>	<b>15.5%</b>
<b>Total</b>	<b>19,068</b>	<b>332</b>	<b>6,748</b>	<b>5,743</b>	<b>2,501</b>	<b>3,744</b>	<b>1.7%</b>	<b>35.4%</b>	<b>30.1%</b>	<b>13.1%</b>	<b>19.6%</b>

## Housing Development

Housing development plays a vital role in understanding the broader context of enrollment trends within a school district. While historic data captures previously approved and/or built housing units, these data do not retain current information. As such, the Pennsylvania Economy League requests updated housing unit information from all municipalities within a given school district.

PEL attempted to contact all municipalities in the district but only received responses from Douglass Township (Berks), Bally Borough, Colebrookdale Borough, Upper Frederick Township and Earl Township. Earl Township reported five new units, Bally Borough reported four new units, Cokebrookdale and Douglass three new homes each. Douglass Township also reported a 120 unit 55+apartment building, which will not affect the enrollments. Table 1-10 shows proposed housing development within the district.

**Table 1.10 Boyertown Housing Development**

	Elementary Attendance Area or Cross Streets	Type of Housing*	Units Still to be Completed	Units Per Year	Start Date	Estimated Completion Date
<b>DEVELOPMENTS APPROVED</b>						
<b><u>Colebrookdale Twp</u></b>						
Townhomes along Swamp Creek	Swamp Creek Rd & Montgomery Ave	TH	39	??	2025	?
<b><u>Washington Twp</u></b>						
Reserve at Barto	Washington Elem.	TH	32	??	2026	??
<b><u>Douglas Twp (Montgomery)</u></b>						
Douglass Meadows Phase 1 (6 Lots)	Smith Road	SFD	0		2020	2021
Douglass Meadows Phase 2 (14 Lots)	Smith Road	SFD	0		2022	2024
OAKMILL (10 lots)	Gilbertsville Road	SFD	0		2022	2023
Wexford Court (16 lots)	Gilbertsville Road	SFD	0		2023	2024
Foxwood Ridge Phase 1 (42 Units)	Jackson Road	TH	0		2020	2021
Foxwood Ridge Phase 2 (82 Units)	Jackson Road	TH	0		2022	2024
Foxwood Ridge Phase 3 (65 Units)	Jackson Road	TH	8		2024	2025
Kelly Acres (5 Lots)	Buchert Road	SFD	1		2024	2026
Country View Phase 1 (15 Lots)	Congo Road	SFD	0		2022	2024
Country View Phase 2 (5 Lots)	Congo Road	SFD	3		2022	2026
Country View Phase 3 (72 Lots)	Congo Road	SFD	10		2023	2026
<b>Preliminary Plan Approval Subdivisions</b>						

Arbors at Twin Pond (17 Lots)	115 W. Moyer Rd.	SFD	17		2026	2028
Madison Walk Phase 1 (73 Lots)	Sweinhart Rd.	SFD	73		TBD	
Madison Walk Phase 2 (16 Lots)	Sweinhart Rd.	Twins	16		TBD	
Madison Walk Phase 3 (47 Units)	Sweinhart Rd.	TH	47		TBD	
749 Congo Road (26 Lots)	Congo Road	SFD	26		2026	2028
Clover Hill Subdivision (3 Lots)	Niantic Road	SFD	3		2026	2028
Holly Road Development (22 Lots)	Holly Road	SFD	22		2026	2029
Holly Road Development (156 Units)	Holly Road	TH	156		2026	2029
<b>DEVELOPMENTS PROPOSED</b>						
<b>Douglass Twp (Berks)</b>						
J Cubed Residential Dev. 55 + Apartment Complex	Ben Franklin Hwy & Broadmore Blvd	APT	120	?	?	
<b><u>New Hanover Twp</u></b>						
Laurel Field (Hanover Crossing)		SFD	44	?	?	
Greens at Gilbertsville		SFD	177	?	?	
2481 Romig Road		SFD	52	?	?	
Town Center		TH	644	?	?	
Trotter's Gait		SFD	29	?	?	
Westwood Maguire Tract		SFD	52	?	?	
<b>DEVELOPMENTS IN DISCUSSION</b>						
<b><u>Washington Twp</u></b>						
Edison Walk	Washington Elem.	SFD	??	??	??	

Codes for Types of Housing: **SFD** = Single-Family Detached; **APT** = Apartments; **TH** = Townhouse; **MIX** = Townhouses, Duplexes, and/or Apartments; **??** = Unknown; **OTHER** = Other (please specify)

While proposed and discussed developments play a small role in overall projections, these areas cannot be reliably used as a metric for new housing units as they are not currently underway. Social, economic, and political conditions within the larger community and economic landscape may delay, end, or accelerate these projects, but the actual execution is unknown.

## Birth Patterns

The annual number of resident births in the Boyertown Area School District is a significant input for the enrollment projection process and ultimately the planning processes of a district. Furthermore, birth data can include notable year-to-year volatility that can sometimes obscure trends. Births in the district fluctuated significantly in 1990s and early 2000s with notable dips in 1997 and 1999, and spikes in 1994, 1996, and 1998. The year 2006 had the highest birth rate at 533, while years 2007 and 2010 saw steep drops in births, with 2010 being the lowest point in the dataset

at 403 live births. From 2019 onward, there's a modest rebound, with 2021 showing a strong increase. The Rolling 5-Year Average, smoothed line, shows a general upward trend until around 2006, followed by a decline and stabilization.

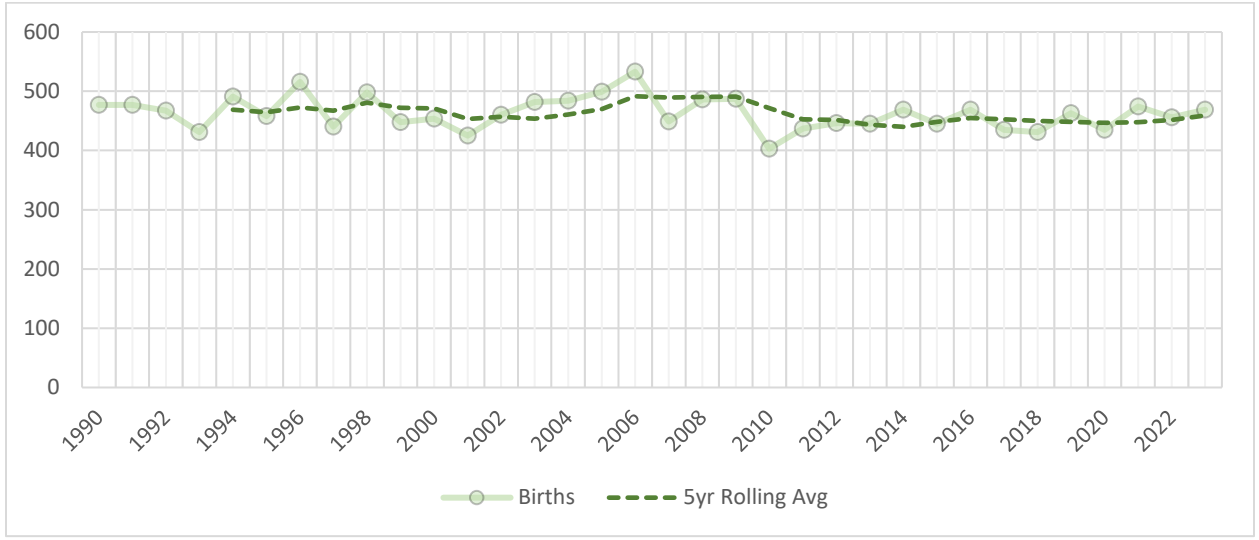
**Table 1.11 Birth Trends in Boyertown Area School District 1990 to 2023<sup>2</sup>**

Year	Births	Year to Year Change		Rolling 5 year average
		#	%	
1990	477			
1991	477	0	0.0	
1992	467	-10	-2.1	
1993	431	-36	-7.7	
1994	491	60	13.9	469
1995	458	-33	-6.7	465
1996	516	58	12.7	473
1997	440	-76	-14.7	467
1998	498	58	13.2	481
1999	448	-50	-10.0	472
2000	454	6	1.3	471
2001	425	-29	-6.4	453
2002	460	35	8.2	457
2003	482	22	4.8	454
2004	484	2	0.4	461
2005	499	15	3.1	470
2006	533	34	6.8	492
2007	449	-84	-15.8	489
2008	486	37	8.2	490
2009	487	1	0.2	491
2010	403	-84	-17.2	472
2011	437	34	8.4	452
2012	446	9	2.1	452
2013	445	-1	-0.2	444
2014	469	24	5.4	440
2015	445	-24	-5.1	448
2016	469	24	5.4	455
2017	435	-34	-7.2	453
2018	431	-4	-0.9	450
2019	463	32	7.4	449
2020	435	-28	-6.0	447
2021	474	39	9.0	448
2022	456	-18	-3.8	452
2023	469	13	2.9	459
1990-99	4,703			
2000-09	4,759	56	1.2	
2010-19	4,443	-316	-6.6	

<sup>2</sup> Source: State Health Data Center, Pennsylvania Department of Health, Harrisburg, Pennsylvania. The Department specifically disclaims responsibility for any analyses, interpretations, or conclusions. Highest yearly birth figure for the district and county highlighted in blue; lowest yearly birth figure for the district and county highlighted in green. Preliminary birth data recorded for 2020 and 2021.

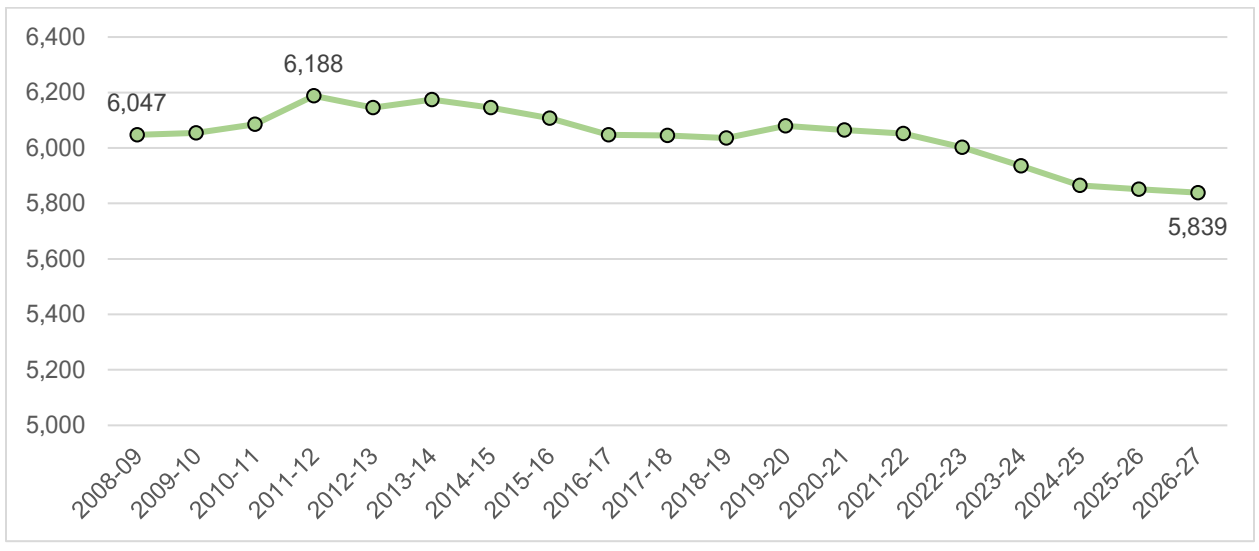
2019-23	1,834		
---------	-------	--	--

**Figure 1.5 Birth Trends in the Boyertown Area School District, 1990 to 2022**



Rolling 13-year cumulative births can be compared to their corresponding school year as a proxy for total possible enrollment before the effects of migration and other educational programs are considered. For example, the 2021-22 school year approximately corresponds with births during the years 2004 through 2016. Rolling 13-year cumulative births grew from 6,047 in 2008-09 to 6,188 in 2011-12. Since then the cumulative births have been on a downward trend to the project low of 5,839 by 2026-27. There was a slight bump in the 2020-21 cumulative number before returning to the downward trend.

**Figure 1.6 Cumulative Births by Corresponding School Year, 2008-09 to 2026-27**

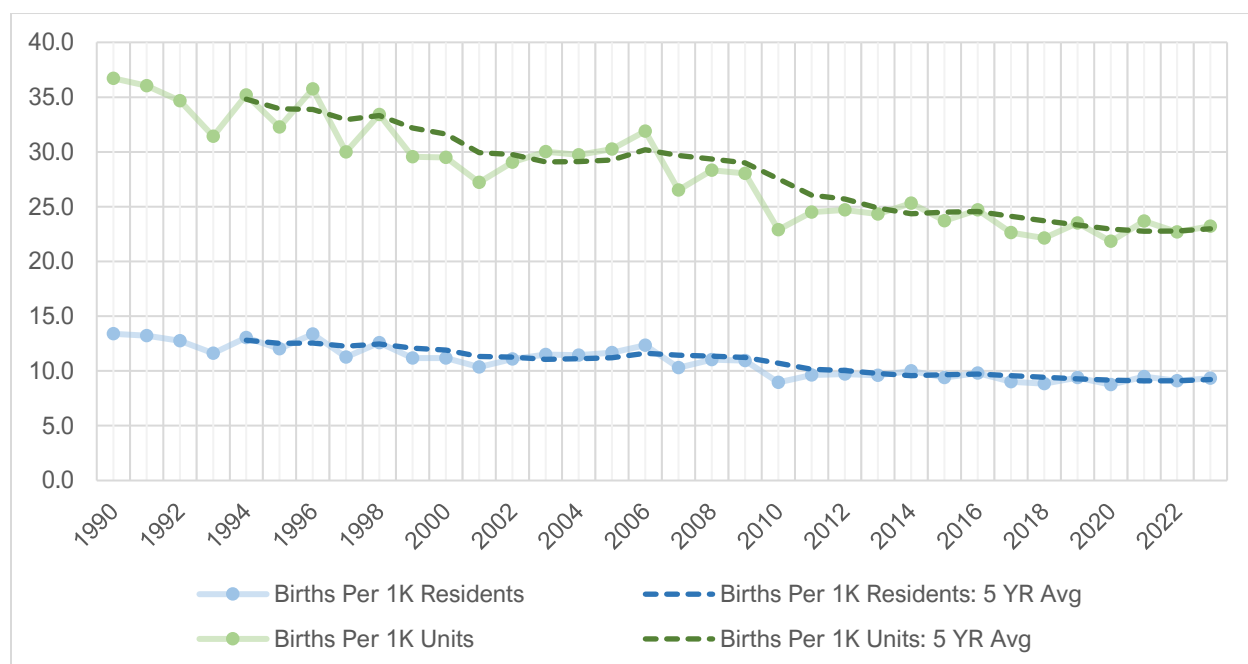


Birth rates as a function of total population and total housing units have been on a slow decline since 2010 which partially counteracts the impact marginal population and housing growth have on enrollment potential. Births per 1,000 residents have declined from about 12.8 per thousand between 1990 and 1994 to a low of 9.1 in 2022 using five-year averages. On a per-1,000 housing unit basis, birth rates have declined from 34.8 to 22.8 over the same time period. In practical terms, consider that in 2020 there were 435 births in the district based on Pennsylvania Department of Health preliminary statistics. If the birth rate per house 1,000 housing units in 2020 had been similar to the rates witnessed around 2000, total births would have been approximately 900. If birth rates were comparable to the mid-1990s on a per-housing basis, the birth figure would be around 1,090.

**Table 1.12 Estimated Births Per 1,000 Residents and Per 1,000 Housing Units**

Year	Births Per 1,000 Residents		Births Per 1,000 Housing Units	
	Rate	5-Year Average	Rate	5-Year Average
1990	13.4		36.7	
1991	13.2		36.1	
1992	12.8		34.7	
1993	11.6		31.4	
1994	13.1	12.8	35.2	34.8
1995	12.0	12.5	32.3	33.9
1996	13.4	12.6	35.8	33.9
1997	11.3	12.3	30.0	32.9
1998	12.6	12.5	33.4	33.3
1999	11.2	12.1	29.6	32.2
2000	11.2	11.9	29.5	31.6
2001	10.4	11.3	27.2	29.9
2002	11.1	11.3	29.1	29.7
2003	11.5	11.1	30.0	29.1
2004	11.4	11.1	29.7	29.1
2005	11.7	11.2	30.3	29.3
2006	12.3	11.6	31.9	30.2
2007	10.3	11.4	26.5	29.7
2008	11.0	11.3	28.3	29.3
2009	10.9	11.2	28.0	29.0
2010	9.0	10.7	22.9	27.5
2011	9.6	10.2	24.5	26.1
2012	9.7	10.1	24.7	25.7
2013	9.6	9.8	24.3	24.9
2014	10.0	9.6	25.3	24.3
2015	9.4	9.7	23.7	24.5
2016	9.8	9.7	24.7	24.5
2017	9.0	9.6	22.6	24.1
2018	8.8	9.4	22.1	23.7
2019	9.4	9.3	23.5	23.3
2020	8.7	9.2	21.8	23.0
2021	9.5	9.1	23.7	22.8
2022	9.1	9.1	22.7	22.8
2023	9.3	9.2	23.2	23.0

**Figure 1.7 Estimated Births Per 1,000 Residents and Per 1,000 Housing Units**



## Migration Patterns

A comparison of birth and death trends to total population trends can provide an estimate of net migration, another notable factor that can influence enrollment projections. Since 1990 the Boyertown Area School District population has increased by 14,657 people. During that same time, the city witnessed net natural population growth each decade. Births exceeded deaths in each decade, totaling a net natural population growth of 9,116 since 1990.

Migration into the district has also increased since 1990, adding 5,541 residents to the district.

**Table 1.13 Resident Births, Deaths, and Population Change, 1990 -2023**

	1990 to 1999	2000 to 2009	2010 to 2019	2020 to 2023	1990 to 2023
Total Population (start)	35,619	40,592	44,963	49,728	35,619
Total Population (end)	40,592	44,963	49,728	50,276	50,276
<b>Total Population Change (a)</b>	<b>4,973</b>	<b>4,371</b>	<b>4,765</b>	<b>548</b>	<b>14,657</b>
Births	4,703	4,759	4,443	1,834	13,905
Deaths	1,163	1,626	2,000	924	4,789
<b>Natural Pop. Change (b)</b>	<b>3,540</b>	<b>3,133</b>	<b>2,443</b>	<b>910</b>	<b>9,116</b>
<b>Net Migration (a minus b)</b>	<b>1,433</b>	<b>1,238</b>	<b>2,322</b>	<b>-362</b>	<b>5,541</b>

A review of the relationship between the Boyertown pupil population and births in the district in the years corresponding to the ages of children in school (essentially, a surrogate for the number of school-age children) can also provide a perspective on the impact of migration. A figure greater than 100 percent indicates an enrollment that is higher than that resulting solely from corresponding births in the district, likely due to net in-migration in this age grouping. Conversely, a figure of less

than 100 percent indicates net out-migration and/or district children enrolling in other educational programs.

Total enrollments for the district are consistently around 110% of the cumulative births in municipalities within the district over the course of the last decade. Other enrollments estimates have been increasing since the 2015-16 school year. Enrollments in other program types account for a period-high 20.1 percent of associated cumulative births for the 2024-25 school year. Total enrollments have increased from 124.0% in 2015-16 to the high of 127.9% for 2024-25. These figures reflect the in-migration to the district.

**Table 1.14 Relationship of BASD and Other Enrollments to Cumulative Births in Corresponding Years**

	Cumu- lative Births	Boyertown Area		Other Enrollments					Total Enrollment	
		#	% of Cumu- lative Births	Private/ Parochial	Home School	Cyber/ Charter	Total Other	% of Cumu- lative Births	Total Enrolled	% of Cumu- lative Births
<b>2015-16</b>	6,108	6,954	113.9	502	144	116	618	10.1	7,572	124.0
<b>2016-17</b>	6,047	6,923	114.5	500	134	127	761	12.6	7,684	127.1
<b>2017-18</b>	6,045	6,878	113.8	489	148	134	771	12.8	7,649	126.5
<b>2018-19</b>	6,036	6,826	113.1	467	142	152	761	12.6	7,587	125.7
<b>2019-20</b>	6,080	6,863	112.9	449	160	165	774	12.7	7,637	125.6
<b>2020-21</b>	6,065	6,500	107.2	377	330	331	1,038	17.1	7,538	124.3
<b>2021-22</b>	6,052	6,661	110.1	486	311	277	1,074	17.7	7,735	127.8
<b>2022-23</b>	6,003	6,605	110.0	501	318	233	1,052	17.5	7,657	127.6
<b>2023-24</b>	5,935	6,514	109.8	482	360	243	1,085	18.3	7,599	128.0
<b>2024-25</b>	5,865	6,325	107.8	532	373	271	1,176	20.1	7,501	127.9

**Cumulative births** represent the sum of births for the 13-year period corresponding to the school year. For example, pupils in school year 2016-17 reflect births during the years 1999 through 2011.

**Boyertown enrollment numbers** are based on October 1 figures as provided by the district for each year and reflect all regular classroom pupils as well as district special education pupils educated in district classrooms, and those who participate in the district's cyber school program.

**Other Enrollments** include children in Boyertown who were reported to be in home schools, cyber schools, and charter schools (except those participating in the district's cyber/charter program) and district children enrolled in private/parochial schools who are transported by the district (and perhaps some who are not transported).

### Enrollment Changes by Grade and Class

Changes in enrollments by grade in the Boyertown Area School District can reflect many factors in addition to migration; for example, shifts to and from private/parochial and other schools, special classes, and other educational programs not provided directly by Boyertown Area; changes in promotional and other internal district policies; withdrawals—particularly in the high school grades;

etc.-However, any large migration would likely be reflected in a comparison of the number of pupils in corresponding grades over a period of years.

The following two tables show the progression of students through the school years 2009-10 through 2024-25. The highlights follow the same cohort of pupils through the years. Enrollments fluctuate throughout grade levels with the largest additions typically occurring in the 1st and 3rd grade while the largest reductions typically occurring with the transition from 10th and 11th grade.

Additionally, the District is graduating approximately 90 more seniors than students enrolling in Kindergarten the following year.

**Table 1.15 Total Enrollments by Grade, 2009-10 to 2024-25**

Year	K	1	2	3	4	5	6	7	8	9	10	11	12	Total K-12
2009-10	495	557	455	530	534	593	516	534	569	563	588	542	514	6,990
2010-11	492	527	566	481	549	551	584	520	546	584	574	583	542	7,099
2011-12	512	527	529	574	494	551	574	594	521	535	588	569	576	7,144
2012-13	482	574	517	545	578	492	548	583	593	536	538	579	565	7,130
2013-14	492	519	568	534	545	590	506	559	591	589	545	518	576	7,132
2014-15	489	525	509	584	537	531	587	519	558	578	582	522	510	7,031
2015-16	423	524	527	518	579	547	535	580	521	547	588	563	502	6,954
2016-17	453	462	527	531	523	575	554	548	578	521	543	546	562	6,923
2017-18	453	484	465	537	546	526	588	559	558	582	531	503	546	6,878
2018-19	454	503	483	480	552	558	538	585	554	568	548	487	516	6,826
2019-20	461	489	516	500	500	560	554	539	592	564	541	539	508	6,863
2020-21	361	430	460	493	485	482	544	539	521	598	528	502	557	6,500
2021-22	426	434	456	483	509	503	517	568	572	570	584	511	528	6,661
2022-23	431	479	446	468	488	501	535	522	554	595	531	545	510	6,605
2023-24	409	452	484	460	478	480	502	537	512	579	545	500	576	6,514
2024-25	407	423	460	485	461	483	479	503	536	528	537	509	514	6,325

Table 1.16 Change in Enrollments by Class, 2009-10 to 2024-25

Year	PY 12 - K	1	2	3	4	5	6	7	8	9	10	11	12	Total K-12
2009-10														
2010-11	-22	32	9	26	19	17	-9	4	12	15	11	-5	0	109
2011-12	-30	35	2	8	13	2	23	10	1	-11	4	-5	-7	45
2012-13	-94	62	-10	16	4	-2	-3	9	-1	15	3	-9	-4	-14
2013-14	-73	37	-6	17	0	12	14	11	8	-4	9	-20	-3	2
2014-15	-87	33	-10	16	3	-14	-3	13	-1	-13	-7	-23	-8	-101
2015-16	-87	35	2	9	-5	10	4	-7	2	-11	10	-19	-20	-77
2016-17	-49	39	3	4	5	-4	7	13	-2	0	-4	-42	-1	-31
2017-18	-109	31	3	10	15	3	13	5	10	4	10	-40	0	-45
2018-19	-92	50	-1	15	15	12	12	-3	-5	10	-34	-44	13	-52
2019-20	-55	35	13	17	20	8	-4	1	7	10	-27	-9	21	37
2020-21	-147	-31	-29	-23	-15	-18	-16	-15	-18	6	-36	-39	18	-363
2021-22	-131	73	26	23	16	18	35	24	33	49	-14	-17	26	161
2022-23	-97	53	12	12	5	-8	32	5	-14	23	-39	-39	-1	-56
2023-24	-101	21	5	14	10	-8	1	2	-10	25	-50	-31	31	-91
2024-25	-169	14	8	1	1	5	-1	1	-1	16	-42	-36	14	-189
<b>Average Change</b>	<b>-89.5</b>	<b>34.6</b>	<b>1.8</b>	<b>11.0</b>	<b>7.1</b>	<b>2.2</b>	<b>7.0</b>	<b>4.9</b>	<b>1.4</b>	<b>8.9</b>	<b>-13.7</b>	<b>-25.2</b>	<b>5.3</b>	<b>-44.3</b>
<b># of Years ↑</b>	0	14	10	14	12	9	9	12	7	10	6	0	6	5
<b># of Years ↓</b>	15	1	5	1	2	6	6	3	8	4	9	15	7	10

## Chapter 2 Enrollment Trends and Projections

Over the past decade, the district experienced a net decline of 629 students (9.0%), with the most significant drop occurring in 2020–21 due to a loss of 363 students, followed by a rebound of 161 students in 2021–22. Enrollment by grade level shows a 12.8% decrease in K–5 students, a 7.6% increase in grades 6–8, and a 17.4% increase in grades 9–12, indicating demographic shifts and retention patterns.

Grade progression ratios generally suggest stable or growing enrollment in early grades, with ratios above 1.0, while transitions to grade 8 and between high school grades show more variability and occasional declines. The ratio of kindergarten enrollments to births five years earlier averages 0.945, with notable deviations such as a high of 1.0067 in 2018–19 and a low of 0.8454 in 2020–21, likely influenced by external factors like the pandemic.

Primary projections from 2024–25 to 2029–30 anticipate a total enrollment decline of 277 students (4.4%), with K–5 gaining 71 students, grades 6–8 losing 93, and grades 9–12 dropping by 255. Extended projections through 2034–35 show relatively flat enrollment, with a slight increase of 51 students (0.8%). Alternative scenarios based on varying birth rates and progression ratios reveal a wide range of possible outcomes, from a low of 4,046 to a high of 8,541 students by 2034–35.

The document also includes detailed projections by school and municipality, showing consistent patterns across the district. For example, Boyertown Elementary is projected to grow from 632 to 690 students, while Boyertown High School is expected to decline from 2,035 to 1,774. These insights are supported by extensive tables and figures, offering valuable data for strategic planning and resource allocation.

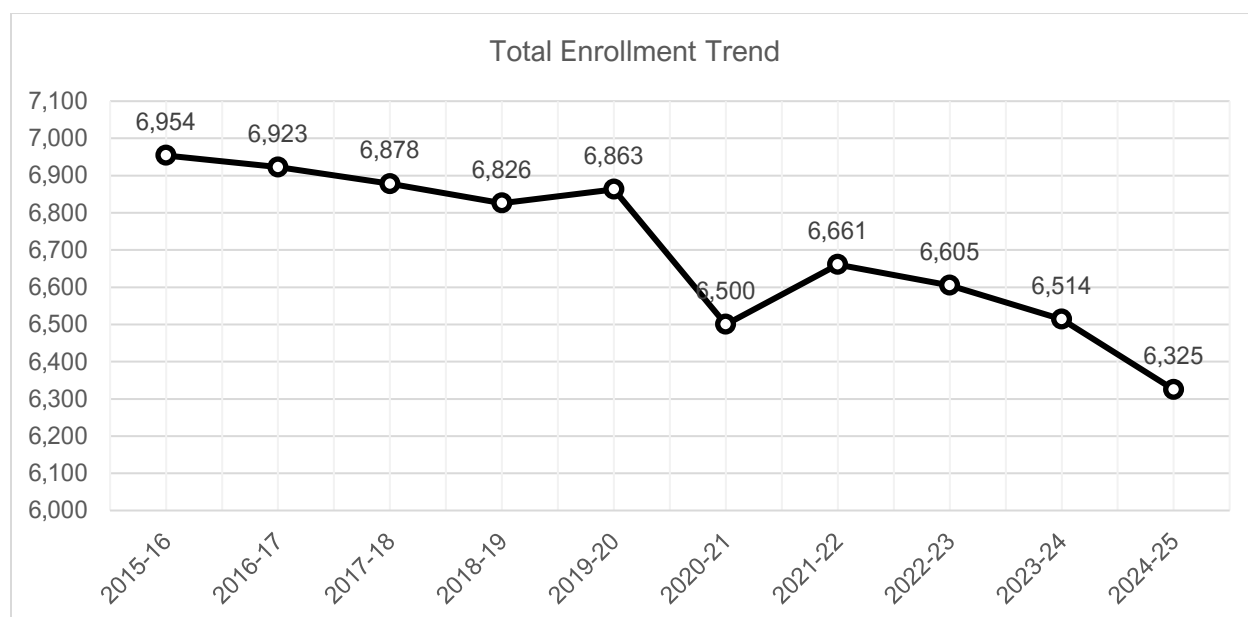
### Historical Trends

Boyertown Area SD has seen decreasing enrollments over the last ten years with overall enrollments decreasing by 629 students or 9.0%. The largest decrease was in 2020–21, losing 363 students. The following year, the district had its largest increase, adding 161 students.

**Table 2.1 Total Enrollments (Grades K-12) 2015-16 to 2024-25**

School Year	Enrollment	Change	
		#	%
2015-16	6,954		
2016-17	6,923	-31	-0.4
2017-18	6,878	-45	-0.7
2018-19	6,826	-52	-0.8
2019-20	6,863	37	0.5
2020-21	6,500	-363	-5.3
2021-22	6,661	161	2.5
2022-23	6,605	-56	-0.8
2023-24	6,514	-91	-1.4
2024-25	6,325	-189	-2.9
<b>Change 2015-16 to 2024-25</b>		<b>-629</b>	<b>-9.0</b>

Figure 2.1 Total Enrollments (Grades K-12)



From the 2015–16 to 2024–25 school years, the Boyertown Area School District experienced varied enrollment trends across grade levels. Grades K–5 saw a consistent decline, dropping from 3,118 students to 2,719, a decrease of 399 students or –12.8%. Grades 6–8 also declined, falling from 1,636 to 1,518, a reduction of 118 students or –7.2%. In contrast, grades 9–12 experienced a smaller decline, decreasing from 2,200 to 2,088, a loss of 112 students or –5.1%.

Year-over-year changes reveal significant fluctuations, particularly in 2020–21, when K–5 enrollment dropped by 315 students (–10.4%), and 6–8 enrollment fell by 81 students (–4.8%). While some years showed modest gains, the overall trend across all grade levels was downward, reflecting broader demographic shifts.

Table 2.2 Enrollments by Grade Level 2015-16 to 2024-25

School Year	K-5			6-8			9-12		
	Enrollmen t	Change #	Change %	Enrollmen t	Change #	Change %	Enrollmen t	Change #	Change %
2015-16	3,118			1,636			2,200		
2016-17	3,071	-47	-1.5	1,680	44	2.7	2,172	-28	-1.3
2017-18	3,011	-60	-2.0	1,705	25	1.5	2,162	-10	-0.5
2018-19	3,030	19	0.6	1,677	-28	-1.6	2,119	-43	-2.0
2019-20	3,026	-4	-0.1	1,685	8	0.5	2,152	33	1.6
2020-21	2,711	-315	-10.4	1,604	-81	-4.8	2,185	33	1.5
2021-22	2,811	100	3.7	1,657	53	3.3	2,193	8	0.4
2022-23	2,813	2	0.1	1,611	-46	-2.8	2,181	-12	-0.5
2023-24	2,763	-50	-1.8	1,551	-60	-3.7	2,200	19	0.9
2024-25	2,719	-44	-1.6	1,518	-33	-2.1	2,088	-112	-5.1
<b>Change 2015-16 to 2024-25</b>		<b>-399</b>	<b>-12.8</b>		<b>-118</b>	<b>-7.2</b>		<b>-112</b>	<b>-5.1</b>

Figure 2.2 Enrollments by Grade Level 2015-16 to 2024-25

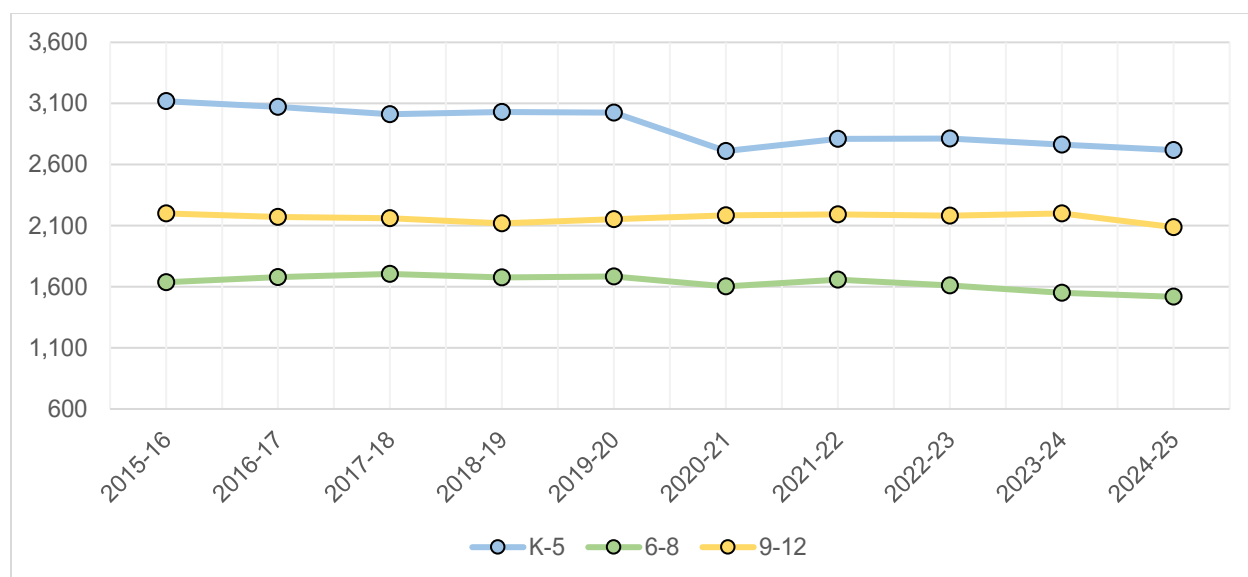


Table 2.3 Total Enrollments by Grade, 2015-16 to 2024-25

School Year	K	1	2	3	4	5	6	7	8	9	10	11	12	K-12
2015-16	423	524	527	518	579	547	535	580	521	547	588	563	502	6,954
2016-17	453	462	527	531	523	575	554	548	578	521	543	546	562	6,923
2017-18	453	484	465	537	546	526	588	559	558	582	531	503	546	6,878
2018-19	454	503	483	480	552	558	538	585	554	568	548	487	516	6,826
2019-20	461	489	516	500	500	560	554	539	592	564	541	539	508	6,863
2020-21	361	430	460	493	485	482	544	539	521	598	528	502	557	6,500
2021-22	426	434	456	483	509	503	517	568	572	570	584	511	528	6,661
2022-23	431	479	446	468	488	501	535	522	554	595	531	545	510	6,605
2023-24	409	452	484	460	478	480	502	537	512	579	545	500	576	6,514
2024-25	407	423	460	485	461	483	479	503	536	528	537	509	514	6,325

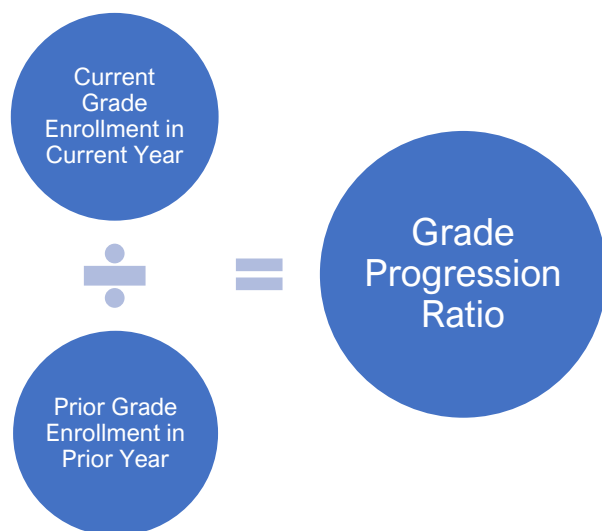
### Grade Progression Ratio History

Enrollment projections for the Boyertown School District were prepared using the “grade progression” technique, which is based on the ratio of enrollments in a given grade in a given year to enrollments in the next lower grade in the preceding year.

The grade progression formula was developed by reviewing the recent experience in the district with respect to pupil progression and refining that information using the various demographic and housing data and the other indicators that were analyzed, as well as the expected impact of schools and educational programs other than those operated directly by the Boyertown School District.

This approach is generally designed to detect such factors as in- or out-migration of pupils; transfers of pupils into and out of any special classes and programs, private/parochial and other schools, full-time CTC program, and/or any other educational programs not directly operated by the district;

changes in promotional and other internal district policies; withdrawals—particularly in the high school grades; etc.



By way of example, if grade 2 enrollments were 98 in the 2018-19 school year and grade 1 had 100 pupils in the prior school year (2017-18), the grade progression ratio from grade 1 to grade 2 would be 0.98.

Ratios below 1.00 are generally indicative of net out-migration, transfers out of the school system or to special classes or programs, failure to promote pupils from the prior grade, and/or dropouts in the high school grades.

Ratios above 1.00 usually indicate net in-migration, transfers into the school system

from private/parochial and other schools or special classes and programs, and/or the failure to promote pupils to the next grade.

The cohort survival ratios from grades K through 12 between 2020-21 and 2024-25 reveal several important trends. In the early grades, from kindergarten through grade 7, the ratios generally hover around or above 1.0, indicating that most students are progressing to the next grade level and, in some cases, additional students are joining the cohort. This suggests stable or slightly growing enrollment in the lower grades. In contrast, the progression to grade 8 tends to show ratios below 1.0, pointing to a modest decline in student numbers, possibly due to transfers or attrition.

High school transitions display more variability. The transition from grade 8 to 9 consistently exceeds 1.0, which may reflect an influx of students from other schools or districts. However, the transitions from grades 9 to 10 and 10 to 11 show the lowest ratios indicating a drop-off or movement out of the system. Interestingly, the transition from grade 11 to 12 tends to rebound, with ratios above 1.0, suggesting strong retention into the final year of high school.

**Table 2.4 Grade Progression Ratio by Grade Groupings**

Grades	2020-21	2021-22	2022-23	2023-24	2024-25	2 yr	3yr	4yr	5 Yr
1/K	0.9328	1.2022	1.1244	1.0487	1.0342	1.0415	1.0691	1.1024	1.0685
2/1	0.9407	1.0605	1.0276	1.0104	1.0177	1.0141	1.0186	1.0291	1.0114
3/2	0.9554	1.0500	1.0263	1.0314	1.0021	1.0167	1.0199	1.0274	1.0130
4/3	0.9700	1.0325	1.0104	1.0214	1.0022	1.0118	1.0113	1.0166	1.0073
5/4	0.9640	1.0371	0.9843	0.9836	1.0105	0.9970	0.9928	1.0039	0.9959
6/5	0.9714	1.0726	1.0636	1.0020	0.9979	1.0000	1.0212	1.0340	1.0215
7/6	0.9729	1.0441	1.0097	1.0037	1.0020	1.0029	1.0051	1.0149	1.0065
8/7	0.9666	1.0612	0.9754	0.9808	0.9981	0.9895	0.9848	1.0039	0.9964
9/8	1.0101	1.0940	1.0402	1.0451	1.0313	1.0382	1.0389	1.0527	1.0442
10/9	0.9362	0.9766	0.9316	0.9160	0.9275	0.9217	0.9250	0.9379	0.9376

<b>11/10</b>	0.9279	0.9678	0.9332	0.9416	0.9339	0.9378	0.9363	0.9441	0.9409
<b>12/11</b>	1.0334	1.0518	0.9980	1.0569	1.0280	1.0424	1.0276	1.0337	1.0336

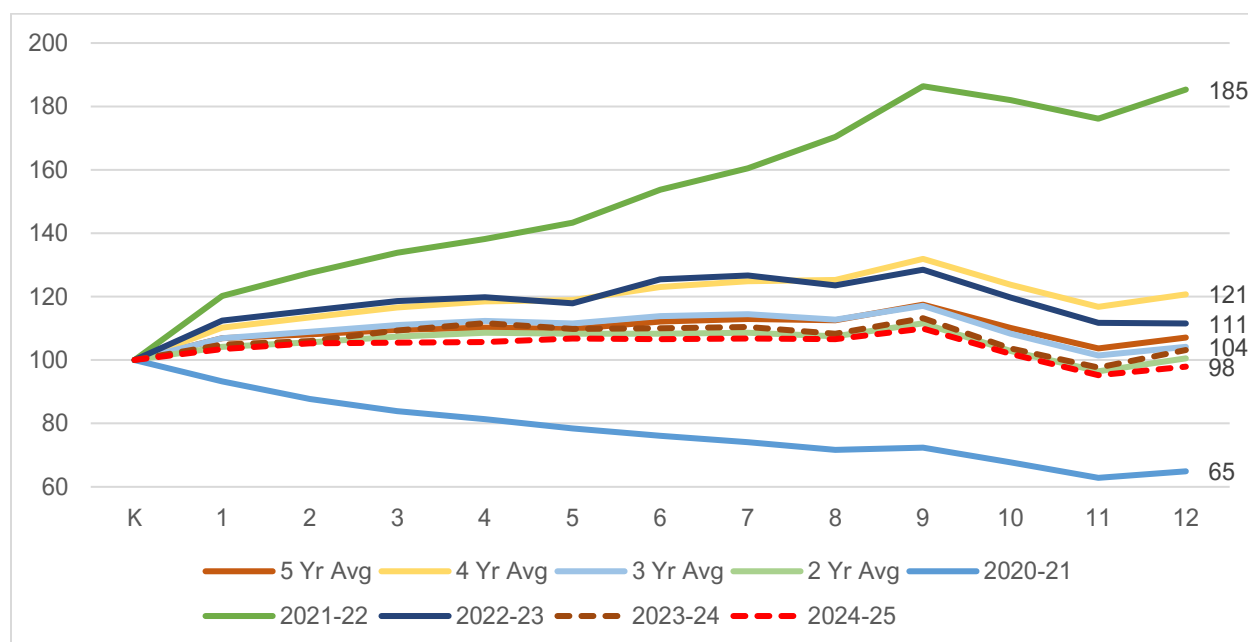
The impact of the Boyertown’s progression ratios is clearly demonstrated by measuring their effect on children entering kindergarten and then moving through each of the grades.

Using the grade-by-grade ratios for the 2021-22 school year (the highest aggregate figure during the five years reviewed), 100 children entering kindergarten this year would in theory increase to 186 pupils in the ninth grade, decrease slightly to 176 by eleventh grade, then graduating to 185 seniors.

A noticeably different pattern results from applying the 2020-21 ratios (Covid 19 year)the lowest aggregate figure of the past five years. Under this scenario, 100 kindergarten entries would fall to 65 pupils in the twelfth grade.

In practice, enrollment projections typically utilize a three-, four-, or five-year average of grade progression ratios. The graphic below shows these averages as well as the variance between the 2020-21 and 2021-22 school years.

**Figure 2.3 Progression Examples of 100 Kindergarten Students under Different Ratios**



In practice, these patterns would not necessarily materialize as outlined due to changes in progression ratios over time. However, the theoretical impact of the progression ratios based on these points of reference reveals the effect of the migration of school-age children, transfers out of or into district classrooms, to or from private/parochial and other schools and special classes and programs, changes in promotional and other internal district policies, dropouts, and so forth.

## **Kindergarten Enrollment to Births Ratio History**

Another vital enrollment projection input is ratio of kindergarten enrollments and resident births five years earlier. These ratios (or “cohort survival rates”) are analyzed and—along with the number of births in the district—are used to calculate future kindergarten enrollments. This approach, like the grade progression technique, detects net in- and out-migration and the impact of private/parochial and other schools as well as special classes and programs.

A figure below 1.0 suggests that kindergarten entries are lower than the number of births in the district five years earlier, indicating net out-migration in the pre-school ages and/or families opting to enroll their children in kindergarten classes or programs provided by entities other than the public school district. Conversely, a figure of greater than 1.0 suggests more kindergarten entries than births in the district five years earlier indicating in-migration of children that outweighs any role that non-district schools and educational programs and special classes and programs may play.

The best available source of data on births in the district is the annual compilations by the Pennsylvania Department of Health. However, it should be noted that birth figures for purposes of the projection model are based on the school year and age eligibility requirements rather than the calendar year as reported elsewhere in this study. Boyertown requires that children be five years of age by September 1 to enter kindergarten that year.

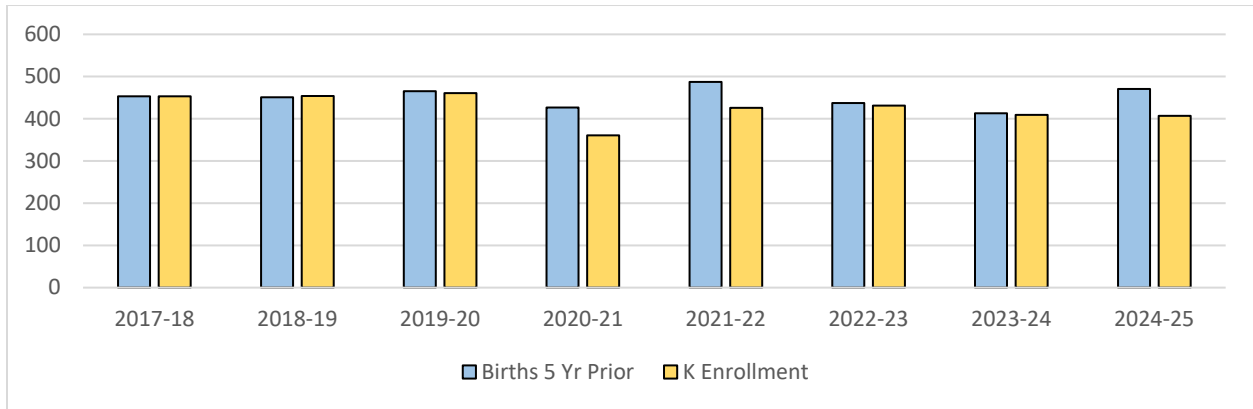
Enrollment numbers generally follow birth trends but show notable deviations in certain years. For instance, while births increased in 2015–16, the corresponding enrollments in 2021–22 were lower than expected, resulting in a ratio of 0.8747. The data also reveals sharp changes in enrollment figures, such as a 100-student drop in 2020–21 and a 65-student rebound in 2021–22.

The table presents data on birth counts and subsequent kindergarten enrollments over a series of years, along with the ratio of enrollments to births. On average, about 94.5% of children born in a given year enroll in kindergarten six years later, though this ratio fluctuates. The highest enrollment ratio occurred in the 2018–19 school year at 1.0067, indicating slightly more enrollments than births, possibly due to transfers or late registrations. Conversely, the lowest ratio was 0.8454 in 2020–21, reflecting a significant drop in enrollments, likely influenced by external factors such as the COVID-19 pandemic.

**Table 2.5 Ratios of Kindergarten Entries to Births**

<b>Birth Year</b>	<b>Births</b>	<b>School Year</b>	<b>Kinder-garten Enrollments</b>	<b>Ratio</b>
<b>2011-12</b>	453	2017-18	453	1.0000
<b>2012-13</b>	451	2018-19	454	1.0067
<b>2013-14</b>	465	2019-20	461	0.9914
<b>2014-15</b>	427	2020-21	361	0.8454
<b>2015-16</b>	487	2021-22	426	0.8747
<b>2016-17</b>	437	2022-23	431	0.9863
<b>2017-18</b>	413	2023-24	409	0.9903
<b>2018-19</b>	471	2024-25	407	0.8641

**Figure 2.4 Ratios of Kindergarten Entries to Births**



**2025-26 Actuals vs. Projection**

PEL received the actual October 1, 2025 enrollment figures after the completion of this report. Numbers for 2025-26 beginning with Table 2.7 are projected numbers based on actuals through 2024-25. Actual October 1, 2025 numbers for grades kindergarten through 12 were 6,184 versus the PEL estimate of 6,242 or a variance of 53 students or 0.8 %.

**Table 2.6 Total Enrollment Actual vs Projected 2025-26**

	Actual	Projected	Variance	
			#	%
<b>K-5</b>	2,664	2,702	-38	-1.4
<b>6-8</b>	1,467	1,469	-2	-0.1
<b>9-12</b>	2,058	2,071	-13	-0.6
<b>Total</b>	<b>6,189</b>	<b>6,242</b>	<b>-53</b>	<b>-0.8</b>
<b>PK</b>	53	n/a		
<b>Total</b>	<b>6,242</b>	<b>6,242</b>		

## Enrollment Projections – Primary Period

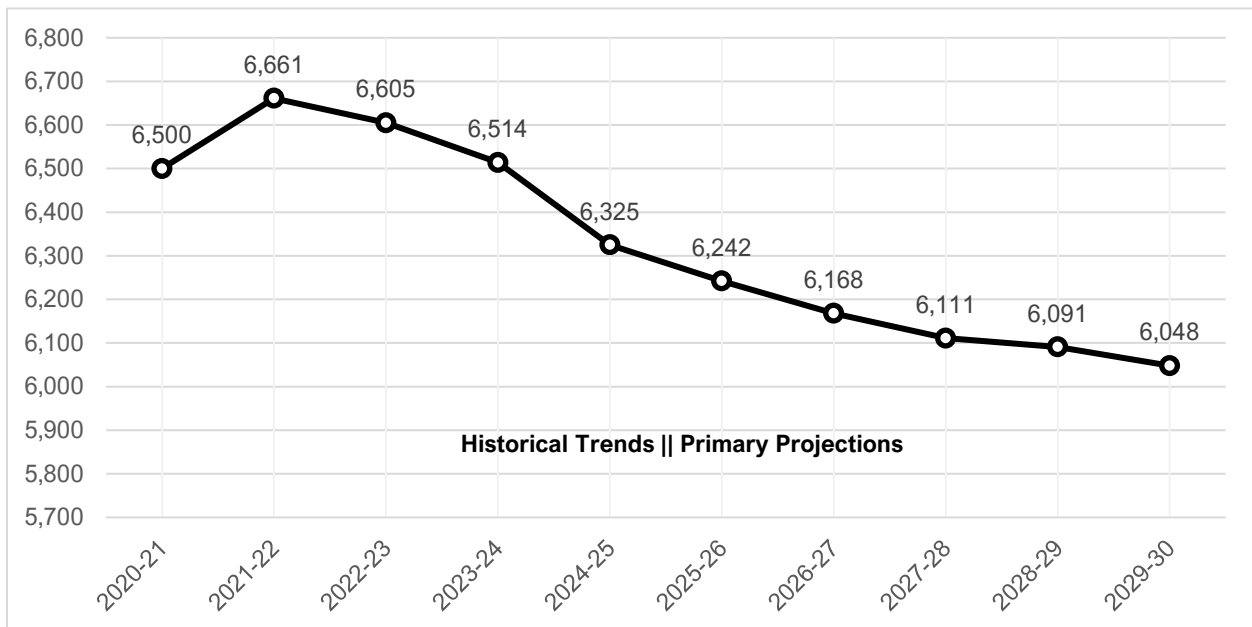
The primary projection period’s methodology assumes overall migration and related patterns will remain consistent with recent trends, that the role of schools and educational programs other than those operated directly by Boyertown School District will be compatible with expected patterns, and that the district will continue its current practices relative to kindergarten, CTC, and special education programs and maintain other key programs, practices, and policies. Kindergarten entries are forecasted based on actual live birth data for district municipalities and the three year average for births-to-kindergarten cohort survival rates. Grade progressions representing the three average ratios in the previously reviewed historical period.

Primary projections anticipate an enrollment decline from 2025-26 to 2029-30. These trends lead to a total enrollment decline of 277 pupils (-4.1%) by 2029-30 when compared to 2024-25.

**Table 2.7 Total Enrollment Projections (Grades K-12) 2024-25 to 2029-30**

School Year	Enrollment	Change	
		#	%
2024-25	6,325		
2025-26	6,242	-83	-1.3
2026-27	6,168	-74	-1.2
2027-28	6,111	-57	-0.9
2028-29	6,091	-20	-0.3
2029-30	6,048	-43	-0.7
<b>Change 2024-25 to 2029-30</b>		<b>-277</b>	<b>-4.4</b>

**Figure 2.5 Total Enrollment Trends and Primary Projections 2020-21 to 2029-30**



From the 2024–25 to 2029–30 school years, enrollment projections show distinct patterns across grade bands. For grades K–5, enrollment is expected to drop in 2025–26 before increasing, resulting in a net gain of 71 students (2.6%). In grades 6–8, the trend continues to decline with a slight bump in 2027–28, ending with a net loss of 93 students (-6.1%). Meanwhile, grades 9–12 are projected to experience a steady decline throughout the period, culminating in a significant drop of 255 students (-12.2%).

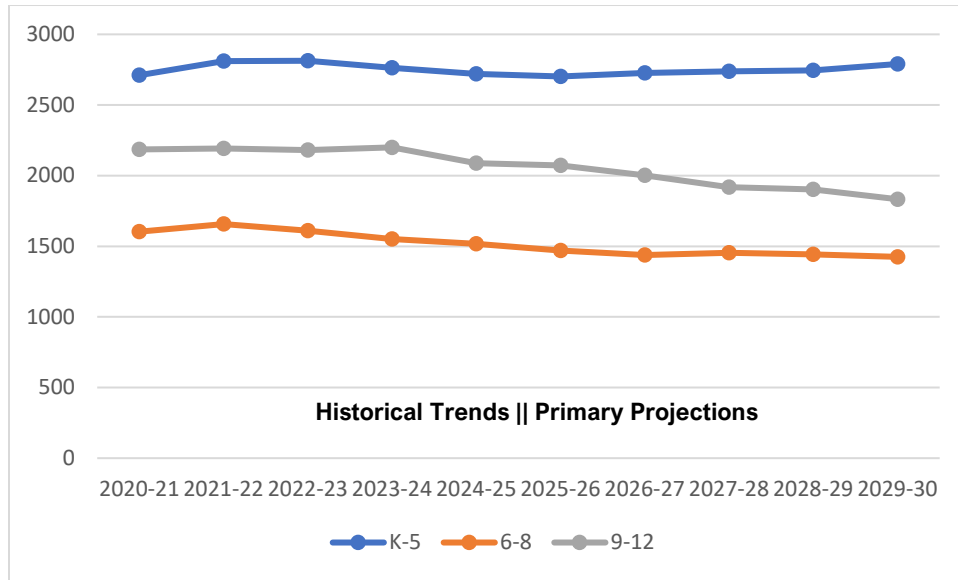
**Table 2.8 Projected Enrollments by Grade Level 2024-25 to 2029-30**

School Year	K-5		Change		6-8		Change		9-12		Change	
	Enrollment	#	%	Enrollment	#	%	Enrollment	#	%			
2024-25	2,719			1,518			2,088					
2025-26	2,702	-17	-0.6	1,469	-49	-3.2	2,071	-17	-0.8			
2026-27	2,727	25	0.9	1,438	-31	-2.1	2,003	-68	-3.3			
2027-28	2,738	11	0.4	1,454	16	1.1	1,919	-84	-4.2			
2028-29	2,746	8	0.3	1,443	-11	-0.8	1,902	-17	-0.9			
2029-30	2,790	44	1.6	1,425	-18	-1.2	1,833	-69	-3.6			
<b>Change 2024-25 to 2029-30</b>		<b>71</b>	<b>2.6</b>		<b>-93</b>	<b>-6.1</b>		<b>-255</b>	<b>-12.2</b>			

**Table 2.9 Projected Enrollments by Grade**

School Year	K	1	2	3	4	5	6	7	8	9	10	11	12	Total K-12
2024-25	407	423	460	485	461	483	479	503	536	528	537	509	514	<b>6,325</b>
2025-26	419	435	431	469	490	458	493	481	495	557	488	503	523	<b>6,242</b>
2026-27	436	448	443	440	474	486	468	496	474	514	515	457	517	<b>6,168</b>
2027-28	448	466	456	452	445	471	496	470	488	492	475	482	470	<b>6,111</b>
2028-29	428	479	475	465	457	442	481	499	463	507	455	445	495	<b>6,091</b>
2029-30	436	458	488	484	470	454	451	483	491	481	469	426	457	<b>6,048</b>
Pupil Change														
2024-25 to														
2029-30	29	35	28	-1	9	-29	-28	-20	-45	-47	-68	-83	-57	<b>-277</b>
Percent Change														
2024-25 to														
2029-30	7.1	8.3	6.1	-0.2	2.0	-6.0	-5.8	-4.0	-8.4	-8.9	-12.7	-16.3	-11.1	<b>-4.4</b>

**Figure 2.6 Enrollment Trends and Primary Projections by Grade Level 2020-21 to 2029-30**



### Enrollment Projections – Extended Period

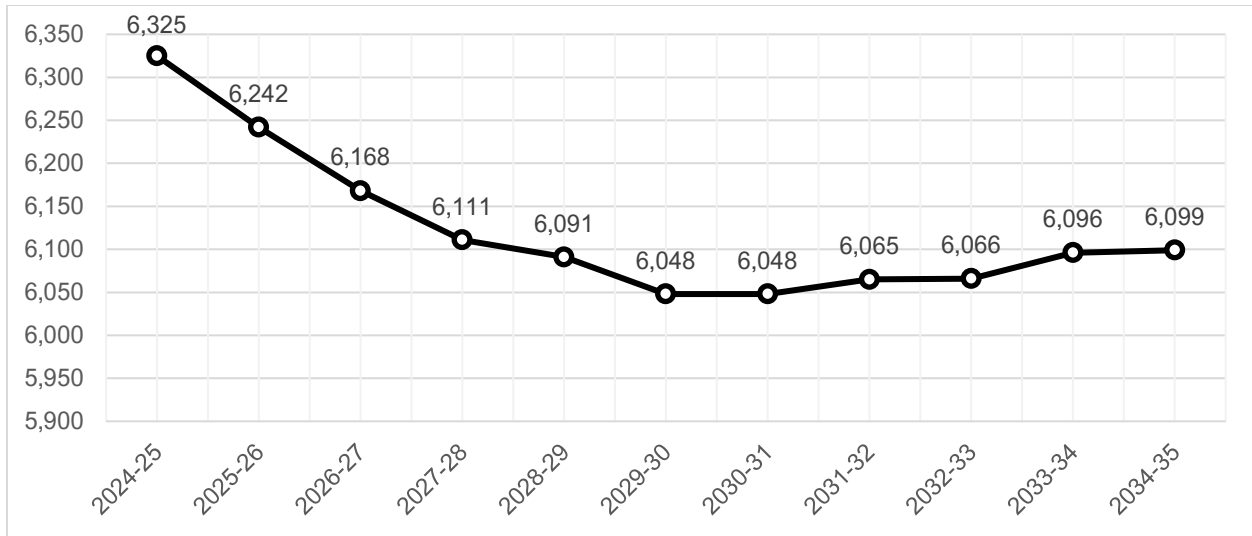
Extended projections require estimating future births for kindergarten entries, which adds another level of projection uncertainty due to the volatility of yearly births (as further explored in Chapter 1). These projections fix estimated births at the five year average of 460 births annually.

The extended projections anticipate relatively flat enrollments through 2034-35. Enrollments in this period are anticipated to grow by 51 pupils (0.8 percent).

**Table 2.10 Extended Total Enrollment Projections (Grades K-12) 2029-30 to 2034-35**

School Year	Enrollment	Change	
		#	%
2029-30	6,048		
2030-31	6,048	0	0.0
2031-32	6,065	17	0.3
2032-33	6,066	1	0.0
2033-34	6,096	30	0.5
2034-35	6,099	3	0.0
<b>Change 2029-30 to 2034-35</b>		<b>51</b>	<b>0.8</b>

**Figure 2.7 Total Primary/Extended Enrollment Projections 2024-25 to 2034-35**

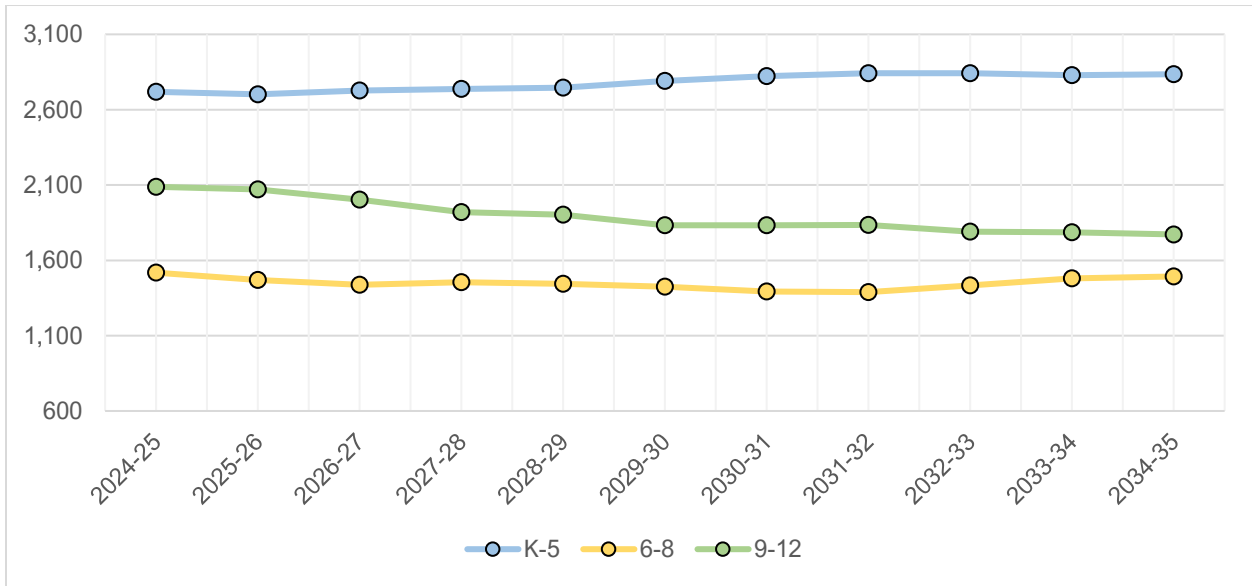


Between the school years 2029–30 and 2034–35, enrollment trends across grade groups show varied patterns. For grades K–5, enrollment increased from 2,790 to 2,835, representing a modest growth of 45 students or 1.6%. Grades 6–8 experienced a more substantial increase, rising from 1,425 to 1,492, which is a gain of 67 students or 4.7%. In contrast, grades 9–12 saw a decline in enrollment, dropping from 1,833 to 1,772, a decrease of 61 students or 3.3%. These trends suggest a growing student population in the lower and middle grades, while high school enrollment is gradually declining.

**Table 2.11 Extended Enrollment Projections by Grade Level 2029-30 to 2034-05**

School Year	K-5		Change		6-8		Change		9-12		Change	
	Enrollment	#	%	Enrollment	#	%	Enrollment	#	%			
<b>2029-30</b>	2,790			1,425			1,833					
<b>2030-31</b>	2,823	33	1.2	1,393	-32	-2.2	1,832	-1	-0.1			
<b>2031-32</b>	2,842	19	0.7	1,389	-4	-0.3	1,834	2	0.1			
<b>2032-33</b>	2,842	0	0.0	1,433	44	3.2	1,791	-43	-2.3			
<b>2033-34</b>	2,828	-14	-0.5	1,481	48	3.3	1,787	-4	-0.2			
<b>2034-35</b>	2,835	7	0.2	1,492	11	0.7	1,772	-15	-0.8			
<b>Change 2029-30 to 2034-35</b>		<b>45</b>	<b>1.6</b>		<b>67</b>	<b>4.7</b>		<b>-61</b>	<b>-3.3</b>			

Figure 2.8 Primary and Extended Enrollment Projections by Grade Level, 2024-25 to 2034-35



## Enrollment Projections Alternative Scenarios

The above projections were developed using three year average progression ratios and the average birth rate for the last three years. In contrast, Table 2.12 provides a greater range of enrollment possibilities using a combination of the minimum and maximum progressions for each grade, shown in Table 2.11, as well as the minimum (442), maximum (473) and average (460) annual number of births for the last five years.

The projections begin to diverge significantly in 2025-26 depending on the assumption's grade progression ratio. The birth assumption differences start in 2029-30, as births for the school years 2025-26 through 2027-28 have already occurred. The average birth maximum progression scenario projects a growth in enrollment, peaking at 8,541 students. The average birth minimum progression scenario shows a decline, suggesting a more conservative outlook.

In contrast, the other three scenarios (Actual/Preferred, Minimum Birth and Average Progression ratio, and Maximum Birth and Average Progression) follow more moderate and stable paths. Notably, the range between the highest and lowest projections expands steadily—from virtually no difference in 2024–25 to a minimal gap of 191 students by 2034–35.

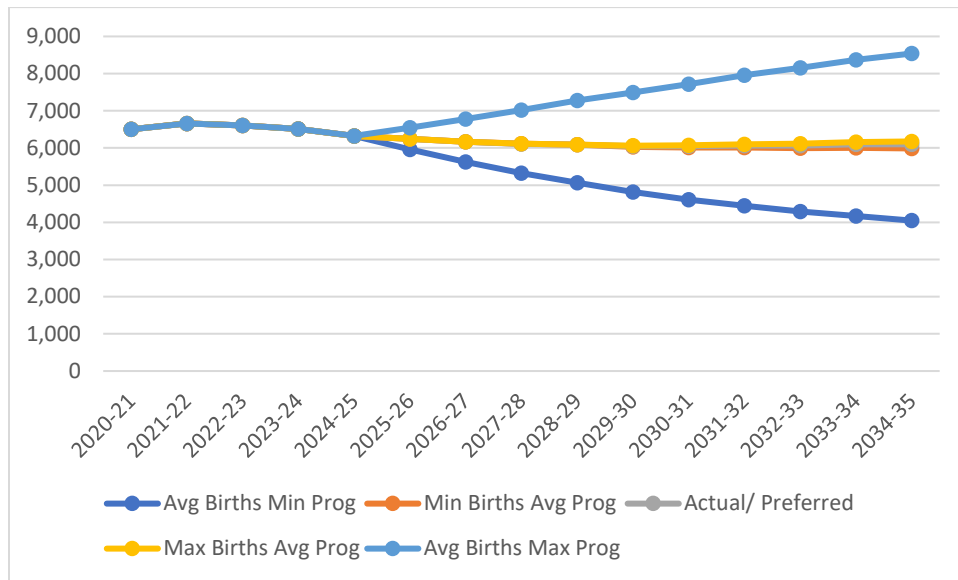
**Table 2.12 Minimum/Maximum Progression Ratios, SY 2021-22 to 2024-25**

<b>Grades</b>	<b>Minimum</b>	<b>Preferred 3 year Avg</b>	<b>Maximum</b>
<b>B/K</b>	0.8454	0.9469	0.9903
<b>1/K</b>	0.9328	1.2022	1.2022
<b>2/1</b>	0.9407	1.0605	1.0605
<b>3/2</b>	0.9554	1.0500	1.0500
<b>4/3</b>	0.9700	1.0325	1.0325
<b>5/4</b>	0.9640	1.0371	1.0371
<b>6/5</b>	0.9714	1.0726	1.0726
<b>7/6</b>	0.9729	1.0441	1.0441
<b>8/7</b>	0.9666	1.0612	1.0612
<b>9/8</b>	1.0101	1.0940	1.0940
<b>10/9</b>	0.9160	0.9766	0.9766
<b>11/10</b>	0.9279	0.9678	0.9678
<b>12/11</b>	0.9980	1.0569	1.0569

**Table 2.13 Actual Enrollments and Alternative Enrollment Projections 2020-21 to 2034-35**

School Year	Avg Births & Min Prog	Min Births & Avg Prog	Actual/ Preferred	Max Births & Avg Prog	Avg Births & Max Prog	Range Prog Chg	Range Birth Min Max
2020-21	6,500	6,500	6,500	6,500	6,500	0	0
2021-22	6,661	6,661	6,661	6,661	6,661	0	0
2022-23	6,605	6,605	6,605	6,605	6,605	0	0
2023-24	6,514	6,514	6,514	6,514	6,514	0	0
2024-25	6,325	6,325	6,325	6,325	6,325	0	0
2025-26	5,958	6,243	6,242	6,243	6,549	591	0
2026-27	5,626	6,168	6,168	6,168	6,779	1,153	0
2027-28	5,326	6,113	6,111	6,113	7,022	1,695	0
2028-29	5,069	6,092	6,091	6,092	7,282	2,213	0
2029-30	4,815	6,032	6,048	6,062	7,494	2,679	29
2030-31	4,612	6,011	6,048	6,072	7,719	3,108	61
2031-32	4,443	6,010	6,065	6,102	7,956	3,513	93
2032-33	4,287	5,992	6,066	6,117	8,152	3,865	125
2033-34	4,167	6,003	6,096	6,161	8,371	4,204	158
2034-35	4,046	5,987	6,099	6,178	8,541	4,494	191

**Figure 2.9 Actual Enrollments and Alternative Enrollment Projections, 2020-21 to 2034-35**



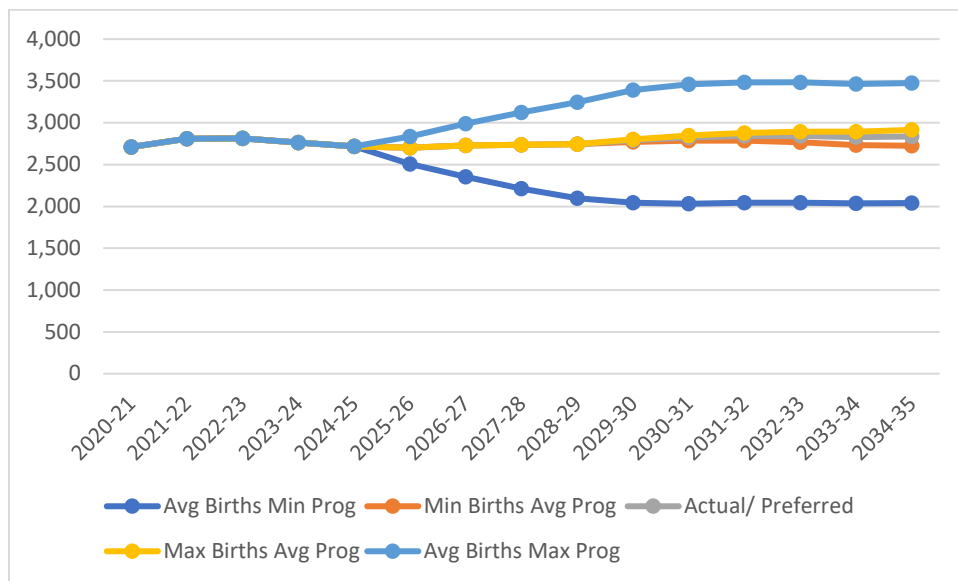
By grade level, the K-5 range estimate is 1,436 in 2034-35, resulting in projections from 2,040 students to 2,914 students; grade 6-8, range is 1,350 projected students from 866 to 2,213; grades 9-12, range is around 1,700, projected students from 1,141 to 2,848.

By grade level, using the three year average progression ratios and the minimum and maximum births, the range of K-5 enrollments grows from 29 beginning in year 2029-30 to 191 in year 2034-35. There is no variance from the preferred in the 6-8 and 9-12 ratios, as birthrates associated with those grade levels have already occurred.

**Table 2.14 K-5 Actual Enrollments and Alternative Enrollment Projections, 2020-21 to 2034-35**

School Year	Avg Births & Min Prog	Min Births & Avg Prog	Actual/ Preferred	Max Births & Avg Prog	Avg Births & Max Prog	Range Prog Chg	Range Birth Min Max
2020-21	2,711	2,711	2,711	2,711	2,711	0	0
2021-22	2,811	2,811	2,811	2,811	2,811	0	0
2022-23	2,813	2,813	2,813	2,813	2,813	0	0
2023-24	2,763	2,763	2,763	2,763	2,763	0	0
2024-25	2,719	2,719	2,719	2,719	2,719	0	0
2025-26	2,506	2,702	2,702	2,702	2,837	332	0
2026-27	2,355	2,727	2,727	2,727	2,990	635	0
2027-28	2,211	2,737	2,738	2,737	3,122	911	0
2028-29	2,096	2,744	2,746	2,744	3,244	1,148	0
2029-30	2,045	2,772	2,790	2,801	3,389	1,344	29
2030-31	2,031	2,786	2,823	2,846	3,458	1,427	61
2031-32	2,043	2,786	2,842	2,879	3,484	1,440	93
2032-33	2,043	2,767	2,842	2,892	3,484	1,441	125
2033-34	2,035	2,734	2,828	2,892	3,465	1,430	158
2034-35	2,040	2,723	2,835	2,914	3,476	1,436	191

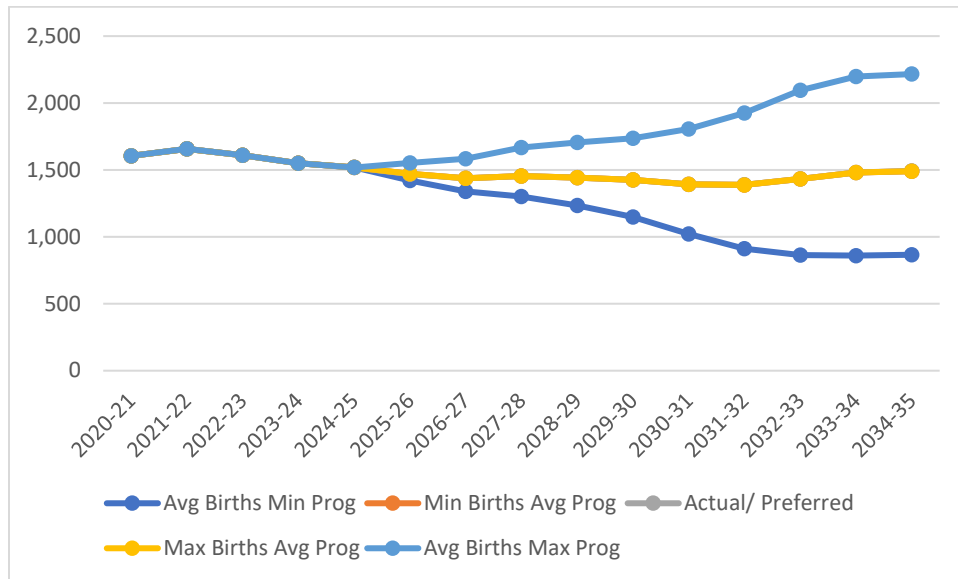
**Figure 2.10 K-5 Actual Enrollments and Alternative Enrollment Projections, 2020-21 to 2034-35**



**Table 2.15 6-8 Actual Enrollments and Alternative Enrollment Projections 2020-21 to 2034-35**

School Year	Avg Births & Min Prog	Min Births & Avg Prog	Actual/ Preferred	Max Births & Avg Prog	Avg Births & Max Prog	Range Prog Chg	Range Birth Min Max
2020-21	1,604	1,604	1,604	1,604	1,604	0	0
2021-22	1,657	1,657	1,657	1,657	1,657	0	0
2022-23	1,611	1,611	1,611	1,611	1,611	0	0
2023-24	1,551	1,551	1,551	1,551	1,551	0	0
2024-25	1,518	1,518	1,518	1,518	1,518	0	0
2025-26	1,421	1,470	1,469	1,470	1,552	131	0
2026-27	1,339	1,437	1,438	1,437	1,585	246	0
2027-28	1,302	1,455	1,454	1,455	1,667	365	0
2028-29	1,234	1,443	1,443	1,443	1,705	471	0
2029-30	1,148	1,426	1,425	1,426	1,737	589	0
2030-31	1,021	1,392	1,393	1,392	1,805	784	0
2031-32	911	1,388	1,389	1,388	1,926	1,015	0
2032-33	864	1,434	1,433	1,434	2,096	1,232	0
2033-34	860	1,480	1,481	1,480	2,197	1,337	0
2034-35	866	1,491	1,492	1,491	2,216	1,350	0

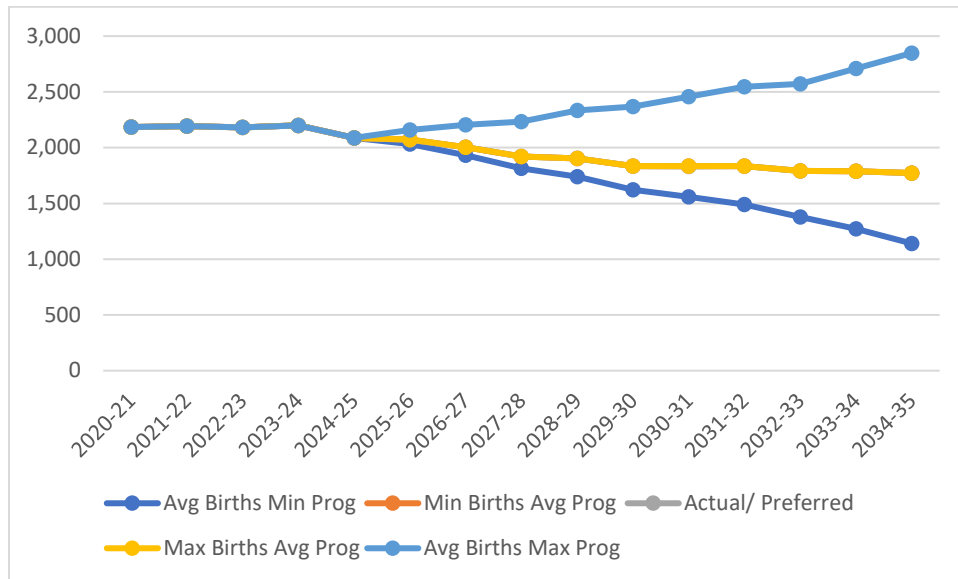
**Figure 2.11 6-8 Actual Enrollments and Alternative Enrollment Projections 2020-21 to 2034-35**



**Table 2.16 9-12 Actual Enrollments and Alternative Enrollment Projections, 2020-21 to 2034-35**

School Year	Avg Births & Min Prog	Min Births & Avg Prog	Actual/ Preferred	Max Births & Avg Prog	Avg Births & Max Prog	Range Prog Chg	Range Birth Min Max
2020-21	2,185	2,185	2,185	2,185	2,185	0	0
2021-22	2,193	2,193	2,193	2,193	2,193	0	0
2022-23	2,181	2,181	2,181	2,181	2,181	0	0
2023-24	2,200	2,200	2,200	2,200	2,200	0	0
2024-25	2,088	2,088	2,088	2,088	2,088	0	0
2025-26	2,031	2,071	2,071	2,071	2,160	128	0
2026-27	1,933	2,004	2,003	2,004	2,205	272	0
2027-28	1,813	1,921	1,919	1,921	2,233	420	0
2028-29	1,739	1,904	1,902	1,904	2,333	594	0
2029-30	1,622	1,834	1,833	1,834	2,367	745	0
2030-31	1,559	1,833	1,832	1,833	2,456	897	0
2031-32	1,489	1,835	1,834	1,835	2,547	1,058	0
2032-33	1,379	1,791	1,791	1,791	2,572	1,193	0
2033-34	1,272	1,789	1,787	1,789	2,709	1,437	0
2034-35	1,141	1,772	1,772	1,772	2,848	1,708	0

**Figure 2.12 9-12 Actual Enrollments and Alternative Enrollment Projections, 2020-21 to 2034-35**



## Projections by Grade and Building

### Assumptions

- Oct. 1, 2024-25, enrollments are used as the baseline.
- Progression ratios are based on the three year average ratio for the school. If the school did not have three years of data for a grade, then the overall school district progression ratio was used.
- Kindergarten enrollment is derived by applying the three year average birth to kindergarten ratio to total births. Births by municipality were allocated to the school using the allocation in the table below:

**Table 2.17 Total Projected Enrollment by School and by District, 2024-25 to 2034-35**

Municipality Name	County	Boyertown El Sch	Colebrookdale El Sch	Earl El Sch	Gilbertsville El Sch	New Hanover- Upper Frederick El	Washington El Sch
Bally Boro	Berks	0.00%	0.00%	0.00%	0.00%	0.00%	100.00%
Bechtelsville Boro	Berks	0.00%	0.00%	0.00%	0.00%	0.00%	100.00%
Boyertown Boro	Berks	33.30%	33.30%	33.30%	0.00%	0.00%	0.00%
Colebrookdale Twp	Berks	25.00%	25.00%	25.00%	0.00%	0.00%	25.00%
Douglass Twp	Berks	0.00%	50.00%	50.00%	0.00%	0.00%	0.00%
Earl Twp	Berks	0.00%	0.00%	100.00%	0.00%	0.00%	0.00%
Washington Twp	Berks	0.00%	33.30%	0.00%	33.30%	0.00%	33.30%
Douglass Twp	Montgomery	20.00%	20.00%	0.00%	20.00%	20.00%	20.00%
New Hanover Twp	Montgomery	20.00%	20.00%	0.00%	20.00%	20.00%	20.00%
Upper Frederick Twp	Montgomery	0.00%	0.00%	0.00%	50.00%	50.00%	0.00%

- Fifth grade students from Boyertown, Cokedalebrook and Earl Elementary schools become the sixth grade students at Boyertown Middle School West, while Gilbertsville, New Hanover – Upper Frederick and Washington Elementary students progress to Boyertown Middle School East.

Table 2.18 Total Projected Enrollment by School and by District, 2024-25 to 2034-35

Year	K-5	6-8	9-12	Total By School Enrollment	District Wide Projections	Variance	% Variance
2024-25	2,711	1,604	2,185	6,500	6,500	0	0.0%
2025-26	2,811	1,657	2,193	6,661	6,661	0	0.0%
2026-27	2,813	1,611	2,181	6,605	6,605	0	0.0%
2027-28	2,763	1,551	2,200	6,514	6,514	0	0.0%
2028-29	2,719	1,518	2,088	6,325	6,325	0	0.0%
2029-30	2,707	1,479	2,076	6,262	6,242	-20	-0.3%
2030-31	2,736	1,460	2,013	6,209	6,168	-41	-0.7%
2031-32	2,740	1,486	1,937	6,163	6,111	-52	-0.9%
2032-33	2,751	1,469	1,931	6,151	6,091	-60	-1.0%
2033-34	2,796	1,448	1,874	6,118	6,048	-70	-1.2%
2034-35	2,823	1,418	1,878	6,119	6,048	-71	-1.2%

K-5 projections at the school level produce a slightly higher figure than the districtwide projections as the individual school grade progression varies from the districtwide figure.

Table 2.19 K-5 Projected Enrollment by School and by District, 2024-25 to 2034-35

Year	Boyertown ES	Colebrookdale ES	Earl ES	Gilbertsville ES	New Hanover/Upper Frederick ES	Washington ES	BASD	Total	District Wide	Variance	Variance %
2024-25	632	234	271	517	608	444	13	2,719	2,719	0	0.0
2025-26	644	236	269	495	609	441	13	2,707	2,702	5	0.2
2026-27	652	233	260	509	615	454	13	2,736	2,727	9	0.3
2027-28	652	227	267	511	609	461	13	2,740	2,738	2	0.1
2028-29	654	228	266	511	614	465	13	2,751	2,746	5	0.2
2029-30	655	234	278	522	626	468	13	2,796	2,790	6	0.2
2030-31	673	236	269	539	611	482	13	2,823	2,823	0	0.0
2031-32	668	237	274	542	613	489	13	2,836	2,842	-6	-0.2
2032-33	678	239	275	537	603	485	13	2,830	2,842	-12	-0.4
2033-34	685	237	266	536	606	482	13	2,825	2,828	-3	-0.1
2034-35	690	235	270	535	614	481	13	2,838	2,835	3	0.1

Middle school projections by school are slightly higher than district wide projections.

**Table 2.20 Middle School Projected Enrollment by School and by District, 2024-25 to 2034-35**

Year	Boyertown MS West	Boyertown MS East	BASD	Total	District Wide	Vari	Vari %
2024-25	668	841	9	1,518	1,518	0	0.0
2025-26	618	852	9	1,479	1,469	10	0.7
2026-27	601	850	9	1,460	1,438	22	1.5
2027-28	623	854	9	1,486	1,454	32	2.2
2028-29	629	831	9	1,469	1,443	26	1.8
2029-30	617	822	9	1,448	1,425	23	1.6
2030-31	602	807	9	1,418	1,393	25	1.8
2031-32	610	803	9	1,422	1,389	33	2.4
2032-33	615	849	9	1,473	1,433	40	2.8
2033-34	632	869	9	1,510	1,481	29	2.0
2034-35	627	877	9	1,513	1,492	21	1.4

These higher figures through grade 8 carry through to high school with slightly higher figures than the aggregate.

**Table 2.21 High School Projected Enrollment by School and by District, 2024-25 to 2034-35**

Year	Boyertown HS	BASD	Total	District Wide	Vari	Vari %
2024-25	2,035	53	2,088	2,088	0	0.0
2025-26	2,023	53	2,076	2,071	5	0.2
2026-27	1,960	53	2,013	2,003	10	0.5
2027-28	1,884	53	1,937	1,919	18	0.9
2028-29	1,878	53	1,931	1,902	29	1.5
2029-30	1,821	53	1,874	1,833	41	2.2
2030-31	1,825	53	1,878	1,832	46	2.5
2031-32	1,832	53	1,885	1,834	51	2.8
2032-33	1,786	53	1,839	1,791	48	2.7
2033-34	1,784	53	1,837	1,787	50	2.8
2034-35	1,774	53	1,827	1,772	55	3.1

**Table 2.22 Boyertown Elementary Projected Enrollment by Grade, 2024-25 to 2034-35**

Year	Total K	001	002	003	004	005	Total
2024-25	88	110	108	114	103	109	632
2025-26	109	94	111	114	115	101	644
2026-27	97	116	94	117	115	113	652
2027-28	100	104	117	100	118	113	652
2028-29	102	107	104	124	101	116	654
2029-30	105	109	107	110	125	99	655
2030-31	105	112	109	113	111	123	673
2031-32	105	112	113	115	114	109	668
2032-33	105	112	113	120	116	112	678
2033-34	105	112	113	120	121	114	685
2034-35	105	112	113	120	121	119	690

**Table 2.23 Colebrookdale Elementary Projected Enrollment by Grade, 2024-25 to 2034-35**

Year	Total K	001	002	003	004	005	Total
2024-25	37	33	40	48	40	36	234
2025-26	38	37	33	41	47	40	236
2026-27	37	38	37	34	40	47	233
2027-28	40	37	38	38	34	40	227
2028-29	40	41	37	39	37	34	228
2029-30	39	41	41	38	38	37	234
2030-31	39	39	41	42	37	38	236
2031-32	39	39	39	42	41	37	237
2032-33	39	39	39	40	41	41	239
2033-34	39	39	39	40	39	41	237
2034-35	39	39	39	40	39	39	235

**Table 2.24 Earl Elementary Projected Enrollment by Grade, 2024-25 to 2034-35**

Year	Total K	001	002	003	004	005	Total
2024-25	50	33	42	44	56	46	271
2025-26	39	50	35	41	47	57	269
2026-27	42	39	53	34	44	48	260
2027-28	50	42	41	52	37	45	267
2028-29	39	50	44	40	56	37	266
2029-30	43	39	53	43	43	57	278
2030-31	43	43	41	52	46	44	269
2031-32	43	43	45	40	56	47	274
2032-33	43	43	45	44	43	57	275
2033-34	43	43	45	44	47	44	266
2034-35	43	43	45	44	47	48	270

Table 2.25 Gilbertsville Elementary Projected Enrollment by Grade, 2024-25 to 2034-35

Year	Total K	001	002	003	004	005	Total
2024-25	106	86	94	106	110	106	608
2025-26	91	114	90	93	111	110	609
2026-27	101	98	119	89	97	111	615
2027-28	91	109	102	117	93	97	609
2028-29	86	98	114	101	122	93	614
2029-30	92	93	102	112	105	122	626
2030-31	92	99	97	101	117	105	611
2031-32	92	99	104	96	105	117	613
2032-33	92	99	104	103	100	105	603
2033-34	92	99	104	103	108	100	606
2034-35	92	99	104	103	108	108	614

Table 2.26 New Hanover – Upper Frederick Elementary Projected Enrollment by Grade, 2024-25 to 2034-35

Year	Total K	001	002	003	004	005	Total
2024-25	106	86	94	106	110	106	608
2025-26	91	114	90	93	111	110	609
2026-27	101	98	119	89	97	111	615
2027-28	91	109	102	117	93	97	609
2028-29	86	98	114	101	122	93	614
2029-30	92	93	102	112	105	122	626
2030-31	92	99	97	101	117	105	611
2031-32	92	99	104	96	105	117	613
2032-33	92	99	104	103	100	105	603
2033-34	92	99	104	103	108	100	606
2034-35	92	99	104	103	108	108	614

Table 2.27 Washington Elementary Projected Enrollment by Grade, 2024-25 to 2034-35

Year	Total K	001	002	003	004	005	Total
2024-25	60	76	80	79	72	77	444
2025-26	66	65	78	83	77	72	441
2026-27	76	72	67	81	81	77	454
2027-28	75	83	74	69	79	81	461
2028-29	74	82	85	77	68	79	465
2029-30	73	80	84	88	75	68	468
2030-31	73	79	82	87	86	75	482
2031-32	73	79	81	85	85	86	489
2032-33	73	79	81	84	83	85	485
2033-34	73	79	81	84	82	83	482
2034-35	73	79	81	84	82	82	481

**Table 2.28 Boyertown Area Middle School West Projected Enrollment by Grade, 2024-25 to 2034-35**

Year	006	007	008	Total
2024-25	197	226	245	668
2025-26	201	196	221	618
2026-27	209	200	192	601
2027-28	219	208	196	623
2028-29	209	217	203	629
2029-30	197	208	212	617
2030-31	203	196	203	602
2031-32	216	202	192	610
2032-33	203	214	198	615
2033-34	221	202	209	632
2034-35	210	219	198	627

**Table 2.29 Boyertown Area Middle School East Projected Enrollment by Grade 2024-25 to 2034-35**

Year	006	007	008	Total
2024-25	280	274	287	841
2025-26	299	283	270	852
2026-27	268	303	279	850
2027-28	284	271	299	854
2028-29	277	287	267	831
2029-30	259	280	283	822
2030-31	269	262	276	807
2031-32	273	272	258	803
2032-33	305	276	268	849
2033-34	288	309	272	869
2034-35	281	291	305	877

**Table 2.30 Boyertown HS Enrollment by Grade 2024-25 to 2034-35**

Year	009	010	011	012	Total
2024-25	523	525	495	492	2,035
2025-26	553	480	489	501	2,023
2026-27	511	507	447	495	1,960
2027-28	490	469	472	453	1,884
2028-29	515	449	436	478	1,878
2029-30	489	472	418	442	1,821
2030-31	515	448	439	423	1,825
2031-32	498	472	417	445	1,832
2032-33	468	457	439	422	1,786
2033-34	485	429	425	445	1,784
2034-35	500	445	399	430	1,774

## Projections by Municipality

### Assumptions

- Oct. 1, 2024-25, enrollments are allocated by municipality based on the 2023 population of 5-17 year olds in the municipality.
- Progression ratios are based on the three year average ratio for the district.

The projections by municipality produce similar to the aggregate.

**Table 2.31 Boyertown Area Enrollment by Municipality by Grade 2024-25 to 2034-35**

Year	K-5	6-8	9-12	By Municipality Total	District Wide Projections	Variance	% Variance
2020-21	2,711	1,604	2,185	6,500	6,500	0	0.0%
2021-22	2,811	1,657	2,193	6,661	6,661	0	0.0%
2022-23	2,813	1,611	2,181	6,605	6,605	0	0.0%
2023-24	2,763	1,551	2,200	6,514	6,514	0	0.0%
2024-25	2,719	1,518	2,088	6,325	6,325	0	0.0%
2025-26	2,707	1,479	2,076	6,262	6,242	-20	-0.3%
2026-27	2,736	1,460	2,013	6,209	6,168	-41	-0.7%
2027-28	2,740	1,486	1,937	6,163	6,111	-52	-0.9%
2028-29	2,751	1,469	1,931	6,151	6,091	-60	-1.0%
2029-30	2,796	1,448	1,874	6,118	6,048	-70	-1.2%
2030-31	2,823	1,418	1,878	6,119	6,048	-71	-1.2%
2031-32	2,836	1,422	1,885	6,143	6,065	-78	-1.3%
2032-33	2,830	1,473	1,839	6,142	6,066	-76	-1.3%
2033-34	2,825	1,510	1,837	6,172	6,096	-76	-1.2%
2034-35	2,838	1,513	1,827	6,178	6,099	-79	-1.3%

**Table 2.32 Bally Borough Enrollment by Grade 2024-25 to 2034-35**

Year	K	001	002	003	004	005	006	007	008	009	010	011	012	Total
2024-25	8	9	9	10	9	10	10	10	11	11	11	10	10	128
2025-26	7	9	9	9	10	9	10	10	10	11	10	10	10	124
2026-27	15	7	9	9	9	10	9	10	10	10	10	9	10	127
2027-28	15	16	7	9	9	9	10	9	10	10	9	9	9	131
2028-29	9	16	16	7	9	9	9	10	9	10	9	8	9	130
2029-30	12	10	16	16	7	9	9	9	10	9	9	8	8	132
2030-31	12	13	10	16	16	7	9	9	9	10	8	8	8	135
2031-32	12	13	13	10	16	16	7	9	9	9	9	7	8	138
2032-33	12	13	13	13	10	16	16	7	9	9	8	8	7	141
2033-34	12	13	13	13	13	10	16	16	7	9	8	7	8	145
2034-35	12	13	13	13	13	13	10	16	16	7	8	7	7	148

K-5	6-8	9-12	Total
55	31	42	128
53	30	41	124
59	29	39	127
65	29	37	131
66	28	36	130
70	28	34	132
74	27	34	135
80	25	33	138
77	32	32	141
74	39	32	145
77	42	29	148

**Table 2.33 Bechtelsville Borough, Berks County Enrollment by Grade 2024-25 to 2034-35**

Year	K	001	002	003	004	005	006	007	008	009	010	011	012	Total
2024-25	7	7	8	8	8	8	8	9	9	9	9	9	9	108
2025-26	9	7	7	8	8	8	8	8	9	9	8	8	9	106
2026-27	16	9	7	7	8	8	8	8	8	9	8	7	8	111
2027-28	9	17	9	7	7	8	8	8	8	8	8	7	7	111
2028-29	9	10	17	9	7	7	8	8	8	8	7	7	7	112
2029-30	9	9	10	17	9	7	7	8	8	8	7	7	7	113
2030-31	9	9	9	10	17	9	7	7	8	8	7	7	7	114
2031-32	9	9	9	9	10	17	9	7	7	8	7	7	7	115
2032-33	9	9	9	9	9	10	17	9	7	7	7	7	7	116
2033-34	9	9	9	9	9	9	10	17	9	7	6	7	7	117
2034-35	9	9	9	9	9	9	9	10	17	9	6	6	7	118

K-5	6-8	9-12	Total
46	26	36	108
47	25	34	106
55	24	32	111
57	24	30	111
59	24	29	112
61	23	29	113
63	22	29	114
63	23	29	115
55	33	28	116
54	36	27	117
54	36	28	118

**Table 2.34 Boyertown Borough Enrollment by Grade 2024-25 to 2034-35**

Year	K	001	002	003	004	005	006	007	008	009	010	011	012	Total
2024-25	23	23	25	27	26	27	27	28	30	29	30	28	28	351
2025-26	40	25	23	25	27	26	28	27	28	31	27	28	29	364
2026-27	38	43	25	23	25	27	27	28	27	29	29	25	29	375
2027-28	41	40	44	25	23	25	28	27	28	28	27	27	26	389
2028-29	41	44	41	45	25	23	26	28	27	29	26	25	28	408
2029-30	42	44	45	42	46	25	23	26	28	28	27	24	26	426
2030-31	42	45	45	46	42	46	26	23	26	29	26	25	25	446
2031-32	42	45	46	46	47	42	47	26	23	27	27	24	26	468
2032-33	42	45	46	47	47	47	43	47	26	24	25	25	25	489
2033-34	42	45	46	47	48	47	48	43	46	27	22	23	26	510
2034-35	42	45	46	47	48	48	48	48	42	48	25	21	24	532

K-5	6-8	9-12	Total
151	85	115	351
166	83	115	364
181	82	112	375
198	83	108	389
219	81	108	408
244	77	105	426
266	75	105	446
268	96	104	468
274	116	99	489
275	137	98	510
276	138	118	532

**Table 2.35 Colebrookdale Township Enrollment by Grade 2024-25 to 2034-35**

Year	K	001	002	003	004	005	006	007	008	009	010	011	012	Total
2024-25	43	45	49	51	49	51	51	53	57	56	57	54	54	670
2025-26	57	46	46	50	52	49	52	51	52	59	52	53	55	674
2026-27	27	61	47	47	51	52	50	52	50	54	55	49	54	649
2027-28	51	29	62	48	48	51	53	50	51	52	50	51	50	646
2028-29	35	55	30	63	49	48	52	53	49	53	48	47	52	634
2029-30	45	37	56	31	64	49	49	52	52	51	49	45	48	628
2030-31	45	48	38	57	31	64	50	49	51	54	47	46	46	626
2031-32	45	48	49	39	58	31	65	50	48	53	50	44	47	627
2032-33	45	48	49	50	39	58	32	65	49	50	49	47	45	626
2033-34	45	48	49	50	51	39	59	32	64	51	46	46	48	628
2034-35	45	48	49	50	51	51	40	59	32	66	47	43	47	628

K-5	6-8	9-12	Total
288	161	221	670
300	155	219	674
285	152	212	649
289	154	203	646
280	154	200	634
282	153	193	628
283	150	193	626
270	163	194	627
289	146	191	626
282	155	191	628
294	131	203	628

**Table 2.36 Douglas Township, Berks County Enrollment by Grade 2024-25 to 2034-35**

Year	K	001	002	003	004	005	006	007	008	009	010	011	012	Total
2024-25	27	28	31	32	31	32	32	33	36	35	36	34	34	421
2025-26	34	29	29	32	32	31	33	32	32	37	32	34	35	422
2026-27	34	36	30	30	32	32	32	33	32	33	34	30	35	423
2027-28	45	36	37	31	30	32	33	32	32	33	31	32	31	435
2028-29	58	49	37	38	31	30	33	33	32	33	31	29	33	467
2029-30	41	62	50	38	38	31	31	33	32	33	31	29	30	479
2030-31	41	43	63	51	38	38	32	31	32	33	31	29	30	492
2031-32	41	43	44	64	52	38	39	32	31	33	31	29	30	507
2032-33	41	43	44	45	65	52	39	39	32	32	31	29	30	522
2033-34	41	43	44	45	46	65	53	39	38	33	30	29	30	536
2034-35	41	43	44	45	46	46	66	53	38	39	31	28	30	550

K-5	6-8	9-12	Total
181	102	139	421
165	98	138	422
164	97	133	423
159	97	127	435
147	98	126	467
140	96	123	479
132	95	123	492
141	76	123	507
133	76	122	522
128	72	122	536
131	78	103	550

**Table 2.37 Earl Township Enrollment by Grade 2024-25 to 2034-35**

Year	K	001	002	003	004	005	006	007	008	009	010	011	012	Total
2024-25	22	22	24	26	24	26	25	27	28	28	29	27	27	335
2025-26	16	24	22	24	26	24	27	25	27	29	26	27	28	325
2026-27	22	17	24	22	24	26	25	27	25	28	27	24	28	319
2027-28	26	23	17	24	22	24	27	25	27	26	26	25	25	317
2028-29	19	27	23	17	24	22	25	27	25	28	24	24	26	311
2029-30	20	20	28	23	17	24	22	25	27	26	26	22	25	305
2030-31	20	21	20	29	23	17	25	22	25	28	24	24	23	301
2031-32	20	21	21	20	29	23	17	25	22	26	26	22	25	297
2032-33	20	21	21	21	20	29	23	17	25	23	24	24	23	291
2033-34	20	21	21	21	21	20	30	23	17	26	21	22	25	288
2034-35	20	21	21	21	21	21	20	30	23	18	24	20	23	283

K-5	6-8	9-12	Total
144	80	111	335
136	79	110	325
135	77	107	319
136	79	102	317
132	77	102	311
132	74	99	305
130	72	99	301
134	64	99	297
132	65	94	291
124	70	94	288
125	73	85	283

**Table 2.38 Washington Township Enrollment by Grade 2024-25 to 2034-35**

Year	K	001	002	003	004	005	006	007	008	009	010	011	012	Total
2024-25	27	28	31	32	31	32	32	33	36	35	36	34	34	421
2025-26	34	29	29	32	32	31	33	32	32	37	32	34	35	422
2026-27	34	36	30	30	32	32	32	33	32	33	34	30	35	423
2027-28	45	36	37	31	30	32	33	32	32	33	31	32	31	435
2028-29	58	49	37	38	31	30	33	33	32	33	31	29	33	467
2029-30	41	62	50	38	38	31	31	33	32	33	31	29	30	479
2030-31	41	43	63	51	38	38	32	31	32	33	31	29	30	492
2031-32	41	43	44	64	52	38	39	32	31	33	31	29	30	507
2032-33	41	43	44	45	65	52	39	39	32	32	31	29	30	522
2033-34	41	43	44	45	46	65	53	39	38	33	30	29	30	536
2034-35	41	43	44	45	46	46	66	53	38	39	31	28	30	550

K-5	6-8	9-12	Total
181	101	139	27
187	97	138	34
194	97	132	34
211	97	127	45
243	98	126	58
260	96	123	41
274	95	123	41
282	102	123	41
290	110	122	41
284	130	122	41
265	157	128	41

**Table 2.39 Douglass Township, Montgomery County Enrollment by Grade 2024-25 to 2034-35**

Year	K	001	002	003	004	005	006	007	008	009	010	011	012	Total
2024-25	101	105	114	121	115	120	119	125	133	131	133	127	128	1,572
2025-26	91	108	107	116	122	114	123	120	123	138	121	125	131	1,539
2026-27	88	97	110	109	117	121	116	124	118	128	128	113	128	1,497
2027-28	76	94	99	112	110	116	124	117	122	123	118	120	116	1,447
2028-29	93	81	96	101	113	109	118	125	115	127	114	110	123	1,425
2029-30	87	99	83	98	102	112	111	119	123	119	117	107	113	1,390
2030-31	87	93	101	85	99	101	114	112	117	128	110	110	110	1,367
2031-32	87	93	95	103	86	98	103	115	110	122	118	103	113	1,346
2032-33	87	93	95	97	104	85	100	104	113	114	113	110	106	1,321
2033-34	87	93	95	97	98	103	87	101	102	117	105	106	113	1,304
2034-35	87	93	95	97	98	97	105	87	99	106	108	98	109	1,279

K-5	6-8	9-12	Total
676	377	519	1,572
658	366	515	1,539
642	358	497	1,497
607	363	477	1,447
593	358	474	1,425
581	353	456	1,390
566	343	458	1,367
562	328	456	1,346
561	317	443	1,321
573	290	441	1,304
567	291	421	1,279

**Table 2.40 New Hanover Township Enrollment by Grade 2024-25 to 2034-35**

Year	K	001	002	003	004	005	006	007	008	009	010	011	012	Total
2024-25	123	127	139	146	139	146	144	152	161	159	162	153	155	1,906
2025-26	123	132	129	142	148	138	149	145	150	167	147	152	157	1,879
2026-27	127	132	134	132	144	147	141	150	143	156	154	138	156	1,854
2027-28	124	136	134	137	133	143	150	142	148	149	144	144	142	1,826
2028-29	123	133	139	137	139	132	146	151	140	154	138	135	148	1,815
2029-30	123	132	135	142	139	138	135	147	149	145	142	129	139	1,795
2030-31	123	131	134	138	144	138	141	136	145	155	134	133	133	1,785
2031-32	123	131	133	137	140	143	141	142	134	151	143	125	137	1,780
2032-33	123	131	133	136	139	139	146	142	140	139	140	134	128	1,770
2033-34	123	131	133	136	138	138	142	147	140	145	129	131	138	1,771
2034-35	123	131	133	136	138	137	141	143	145	145	134	121	135	1,762

K-5	6-8	9-12	Total
820	457	629	1,906
812	444	623	1,879
816	434	604	1,854
807	440	579	1,826
803	437	575	1,815
809	431	555	1,795
808	422	555	1,785
807	417	556	1,780
801	428	541	1,770
799	429	543	1,771
798	429	535	1,762

**Table 2.41 Upper Frederick Township Enrollment by Grade 2024-25 to 2034-35**

Year	K	001	002	003	004	005	006	007	008	009	010	011	012	Total
2024-25	26	28	30	32	30	31	31	33	35	34	35	33	33	411
2025-26	30	28	29	31	32	30	32	31	32	36	31	33	34	409
2026-27	42	32	29	30	31	32	31	32	31	33	33	29	34	419
2027-28	36	45	33	30	30	31	33	31	32	32	31	31	30	425
2028-29	24	38	46	34	30	30	32	33	31	33	30	29	32	422
2029-30	34	25	39	47	34	30	31	32	32	32	31	28	30	425
2030-31	34	37	25	40	48	34	31	31	32	33	30	29	29	433
2031-32	34	37	38	25	40	48	35	31	31	33	31	28	30	441
2032-33	34	37	38	39	25	40	49	35	31	32	31	29	29	449
2033-34	34	37	38	39	39	25	41	49	34	32	30	29	30	457
2034-35	34	37	38	39	39	39	26	41	48	35	30	28	30	464

K-5	6-8	9-12	Total
177	99	135	411
180	95	134	409
196	94	129	419
205	96	124	425
202	96	124	422
209	95	121	425
218	94	121	433
222	97	122	441
213	115	121	449
212	124	121	457
226	115	123	464

## **Chapter 3**

### **Perspective on Accuracy**

#### **Introduction**

Accurate projections of public school enrollments for periods of five to 10 years or more are difficult, at best, because of so many unpredictable variables. Furthermore, such efforts are highly dependent on accurate and complete data from state, county, school, and municipal officials, as well as the candid views of developers, real estate professionals, and others. The resulting projections cannot rise above inaccurate and incomplete data.

The difficulty of generating accurate projections increases as the focus moves from a large base (such as a state) down to counties, to local school districts, and to individual buildings within districts. Generally, the larger the area involved, the greater the accuracy in terms of the amount of percentage deviation from the projection because differences in smaller areas within the larger area tend to balance each other out.

The best way to assess the potential accuracy of PEL's projections of public school enrollments is by comparing the projections in other districts that relied on similar methodologies with the actual enrollments that resulted. The mechanism for doing this is known as the Mean Absolute Percentage Error (or MAPE—which is also known as the Mean Absolute Percentage Deviation). The MAPE and its companion, the Mean Absolute Deviation (which measures absolute values rather than percentage deviation), are the most widely used statistical measurement of average error in quantitative forecast models and indicator of expected accuracy. Use of the percentage deviation is preferable to the absolute deviation given that figures reflect school districts with enrollments ranging from about 1,000 to over 20,000, so there would be an issue of scale when dealing with absolute values; this is not the case with percentages.

The calculation of the MAPE involves taking the difference between the actual enrollment figure for a given year in a given district and the figure PEL projected for that district in that year, dividing it by the actual figure, and then converting it to a percentage. The resulting figures for each year in all districts are then summed—without regard to signs—and divided by the number of data points. The reason the signs are disregarded is that in data sets such as these where the differences or deviations may be higher or lower than the actual figures the failure to do so would result in the negative differences canceling out those that are positive. This would result in a misleadingly low error calculation. Eliminating the signs avoids this potential problem.

#### **Accuracy of PEL Enrollment Studies Catalog**

Since 1986, on more than 200 occasions PEL has examined demographics, housing and related activity, and enrollment trends in Pennsylvania school districts and, using the techniques employed in this analysis, generated projections of enrollments covering a 10-year period. We regularly evaluate the accuracy of these projections by determining the MAPEs.

Projections generated more than 10 years ago have all 10 years on which to judge accuracy; some projections allow only eight or nine years' experience to be viewed; some six, five, and so forth; for others there has been only one year of actual figures on which to make judgments regarding PEL's accuracy.

Based on actual enrollments through the 2024-25 school year (and based on 1030 data points) the average MAPE for the first five years of projections is just over +/-3.5% (essentially, about +/-1.6% the first year, +/-2.5% the second year, etc., and by the fifth year, the figure is about +/-5%). For years six through 10, our calculations are based on 970 data points and the difference between the projected and actual figures averages +/-8.5 percent.

The overall average MAPE reflecting 1,974 data points in all 10 projected years is +/-6.2 percent. The literature indicates that accuracy of +/-5.0% *after five years* is acceptable.

## **Accuracy of Past Boyertown School District Enrollment Studies**

Table 3.1 compares actual student enrollments in the Boyertown Area School District with projections made in three different years: 1987–88, 2011–12, and 2015–16. It evaluates the accuracy of these projections using variance (the difference between projected and actual enrollments) and MAPE (Mean Absolute Percentage Error), a common metric for forecasting accuracy.

During the first projection period (1987–88 to 1997–98), the actual enrollments steadily increased from 5,535 to 6,704. The projections made in 1987–88 consistently underestimated actual enrollments, with variances growing from 34 students in 1988–89 to 378 students by 1997–98. Correspondingly, the MAPE rose from 0.6% to 5.6%, averaging 3.0% over the full period.

In the second projection period (2010–11 to 2019–20), based on the 2011–12 study, actual enrollments peaked at 7,144 in 2011–12 before gradually declining to 6,863 in 2019–20. The projections during this period consistently overestimated enrollments, with variances ranging from –24 to –553 students. The MAPE increased from 0.3% in 2011–12 to 8.1% in 2019–20, averaging 3.9% across the period. The ten year historic enrollment trend prior to the forecast had been on an upward trajectory, but at that time began to decline.

The third projection period (2015–16 to 2024–25), based on the 2015–16 study, shows improved accuracy. Actual enrollments declined from 6,954 to 6,519, and the projections closely tracked this trend. Variances were minimal, ranging from –13 to 146 students, and MAPE values remained low, averaging just 1.2% across the entire period. Enrollment forecast for 2023-24 was off by 21 students and 2024-25 varied by 71 students.

## **Other Considerations**

Uncertain events that can influence and alter pupil projections are such that no projections, no matter how carefully constructed, can guarantee complete accuracy. Unexpected changes in birth patterns; nonpublic school enrollments; migration patterns; internal policies (such as, retention and acceleration of pupils, age requirements for admission to school, half-day/full-day kindergarten programs, and who provides special education programs and to whom they are provided); statewide policies on “school choice,” vouchers, and other aspects of the educational program; the formation and/or termination of charter schools; economic climate; zoning and land use controls; infrastructure considerations; and interest rates, the housing market, and the state of the mortgage industry as they influence residential development activity and the turnover of mature housing, can all affect these projections. Also, policy changes by external parties, such as major employers, can have a significant and lasting impact on enrollment patterns as can a teachers’ strike or even the serious threat of a strike. As such, various influencing factors must be monitored and analyzed every

year by district officials. In this way, significant changes in current and projected patterns can be quickly identified and the appropriate adjustments can be made.

Despite these words of caution, PEL believes the projections offered in this report are as reasonable and as realistic as possible considering the available facts, and—based on our experience, the indicators we relied on, the techniques we used, and our track record—they should serve the district well in its short- and long-term planning. However, our analysis identified some volatility in the pupil count in grades 11 and 12 in the two most recent years leading to questions as to the specific causes and whether this will prove to be an anomaly or a sustained pattern. In view of this, PEL suggests that district administrators maintain a watchful eye on future enrollment changes in these grades.

**Table 3.1 Accuracy of Past Boyertown School District Enrollment Studies**

School Year	Oct. 1 Enroll	PEL Study Projections			Variance			MAPE		
		1987-88	2011-12	2015-16	1987-88	2011-12	2015-16	1987-88	2011-12	2015-16
1987-88	5,535									
1988-89	5,665	5,631			34			0.6		
1989-90	5,858	5,724			134			2.3		
1990-91	5,890	5,809			81			1.4		
1991-92	6,093	5,913			180			3.0		
1992-93	6,186	6,023			163			2.6		
1993-94	6,320	6,116			204			3.2		
1994-95	6,445	6,273			172			2.7		
1995-96	6,548	6,311			237			3.6		
1996-97	6,630	6,319			311			4.7		
1997-98	6,704	6,326			378			5.6		
2010-11	7,099		7,197		-98				1.4	
2011-12	7,144		7,168		-24				0.3	
2012-13	7,130		7,188		-58				0.8	
2013-14	7,132		7,207		-75				1.1	
2014-15	7,031		7,250		-219				3.1	
2015-16	6,954		7,312	6,967	-358	-13			5.1	0.2
2016-17	6,923		7,299	6,896	-376	27			5.4	0.4
2017-18	6,878		7,329	6,823	-451	55			6.6	0.8
2018-19	6,867		7,343	6,758	-476	109			6.9	1.6
2019-20	6,863		7,416	6,717	-553	146			8.1	2.1
2020-21	6,500			6,708		-208				3.2
2021-22	6,710			6,623		87				1.3
2022-23	6,653			6,581		72				1.1
2023-24	6,514			6,535		-21				0.3
2024-25	6,519			6,448		71				1.1
<b>1st 5 yrs</b>								2.0	1.3	1.0
<b>2<sup>nd</sup> 5 yrs</b>								4.0	6.4	1.4
<b>All years</b>								3.0	3.9	1.2

**Figure 3.1 Trends in Past Boyertown Area School District Enrollment Studies vs Actual Enrollment**

