

Maple Street Supply

---

# LOGO AND SIGNS DESIGNED BY DEVON AGOSTINO

Devon serves as the Print Manager for the  
Print and Design department at the  
Midwestern Intermediate Unit IV.



YOU'RE INVITED TO  
**MAPLE STREET SUPPLY**  
OPEN HOUSE



**JANUARY 31, 2025**

**10:00 AM -2:00 PM**  
**MIDWESTERN INTERMEDIATE UNIT IV**  
**453 MAPLE STREET**  
**GROVE CITY PA 16127**

For more information:  
Wendy Kinnear - 724-458-6700 X:1289

Maple Street Supply Open House was held on  
January 31, 2025





**OPEN HOUSE  
AT MAPLE  
STREET  
SUPPLY AT  
MIU4**

PLEASE JOIN US

- Where: 453 Maple Street  
Grove City PA 16127
- When: April 25, 2025  
10:00 AM - 1:00 PM

For more information:  
Wendy Kinnear  
724-458-6700 x: 1289



Education for Children and Youth Experiencing Homelessness  
Educational Stability for Youth in Foster Care





# THE VISION

Region 5 is dedicated to empowering students who are experiencing homelessness. Maple Street Supply at MIU4 provides a boutique-style shopping experience, enabling students to select the items they need. This approach respects their dignity and offers more flexibility.



## By Appointment Only

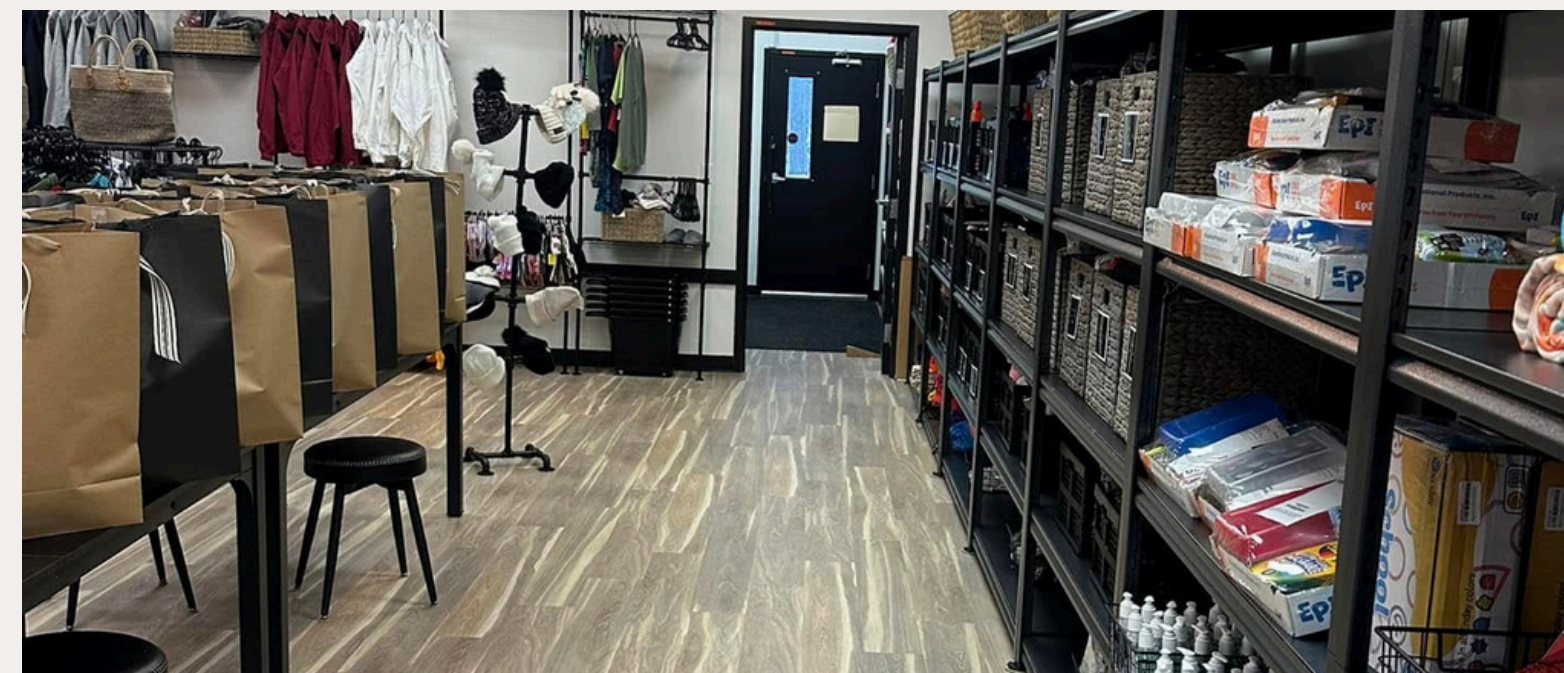
To schedule an appointment to visit Maple Street Supply or to pick up items for your students, please contact Wendy or Braelene.

Wendy Kinnear – 724-458-6700 x: 1289  
[Wendy.Kinnear@miu4.org](mailto:Wendy.Kinnear@miu4.org)

Braelene Miller – 724-458-6700 x: 1215  
[Braelene.Miller@miu4.org](mailto:Braelene.Miller@miu4.org)

Aesthetic

Casual



Maple Street Supply

# MOMENTS FROM OPEN HOUSE



Each person attending the open house received a gift bag filled with various supplies.

## Dan Bishop

THE COORDINATOR OF  
THE MIU4 BUILDING AND  
GROUNDS  
TRANSFORMED THE  
MAPLE STREET SUPPLY  
SPACE INTO A  
BOUTIQUE-LIKE  
EXPERIENCE FOR  
STUDENTS.



# FAMILIAR FACES AT OPEN HOUSE

---



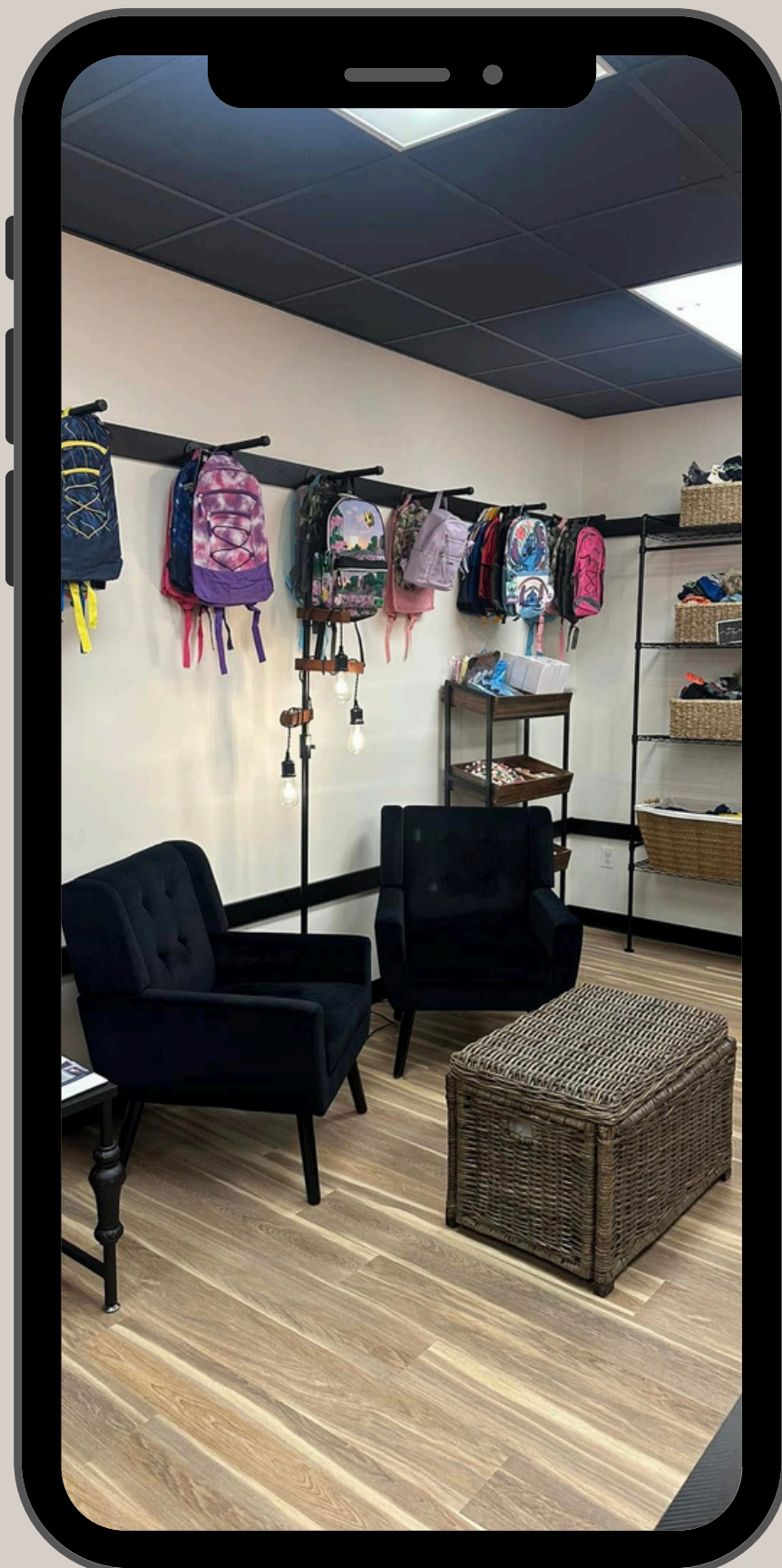
CASUAL ENVIRONMENT



Moments from Open House

---





---

# REGION 5 TEAM

- WENDY KINNEAR – REGION 5 COORDINATOR –  
[WENDY.KINNEAR@MIU4.ORG](mailto:WENDY.KINNEAR@MIU4.ORG)
  - BRYDA DRUMM LSW – INTERMEDIATE UNIT LIAISON – MIU4 –  
[BRYDA.DRUMM@MIU4.ORG](mailto:BRYDA.DRUMM@MIU4.ORG)
  - NANCY KEELING – INTERMEDIATE UNIT LIAISON – IU5 –  
[NANCY\\_KEELING@IU5.ORG](mailto:NANCY_KEELING@IU5.ORG)
  - COURTNEY HARTLE LSW – INTERMEDIATE UNIT LIAISON –  
RIU6 – [COURTNEY.HARTLE@RIU6.ORG](mailto:COURTNEY.HARTLE@RIU6.ORG)
  - BRAELENE MILLER – REGION 5 OUTREACH SPECIALIST –  
[BRAELENE.MILLER@MIU4.ORG](mailto:BRAELENE.MILLER@MIU4.ORG)
  - KRISTEN BELL – INTERMEDIATE UNIT LIAISON – IU9 –  
[KBELL@IU9.ORG](mailto:KBELL@IU9.ORG)
-