



BILINGUAL AND WORLD LANGUAGES DEPARTMENT

June Newsletter

Director's Message

Dear Educators and Staff,

As we conclude the 2025–2026 academic year, the Department continues to advance through systematic, data-driven evolution. Our strategic initiatives are designed to establish highly inclusive, equitable environments that optimize learning outcomes and expand opportunities for our English Language Learners to grow both linguistically and culturally.

The efficacy of our instructional frameworks is demonstrated in the 3-Year NYSESLAT Data Pillars:

- 14% Commanding: The percentage of students achieving mastery has nearly doubled, now representing 14% of our student population.
- 40% Expanding: Language acquisition has accelerated significantly, with the student population at this level growing to 40%.
- 4% Entering: Targeted linguistic interventions have successfully minimized achievement gaps, reducing the entry-level population to 4%.

To sustain and build upon these academic gains, several elementary schools are implementing a strategic transition from traditional sheltered bilingual models to a mainstream classroom setting with ENL support. In this updated setting, classrooms will feature an intentional balance of 50% English Language Learners and 50% non-ELLs.

By scaling co-teaching across the district and offering One-Way Dual at Rhodes Academy and Barack Obama Elementary, we continue to maximize comprehensive language pathways. As you browse through the rest of this newsletter, we want to end the school year by saying thank you for your incredible dedication and willingness to grow alongside our students.

Have a safe, healthy, and restorative summer break!

Sincerely,

Michelle Pineda-Rodgers
Director of Bilingual Education & World Languages



Coordinator's Message

Dear Hempstead Team,

It is with great joy that I share my transition into the role of District Bilingual and World Languages Coordinator. Serving this community for the past decade has been one of the greatest honors of my career, and I am grateful for the opportunity to continue this work alongside all of you.

I believe deeply that language is liberation. When we create classrooms where students' identities, cultures, and voices are affirmed, we open doors to academic success and lifelong confidence. This belief will continue to guide our work together.

In the year ahead, we will focus on:

- Deepening co-teaching partnerships that reflect shared ownership and shared expertise
- Strengthening instructional practices through data, reflection, and coaching
- Expanding professional learning that empowers educators to plan and teach cohesively
- Cultivating culturally rich, restorative learning environments that celebrate multilingualism

Thank you for your continued dedication to our students and families. I look forward to the meaningful work ahead.

Wishing you a peaceful and well-deserved summer.

Warm Regards,

Daniela Ranieri

Congratulations!

Celebrating Our Retiring Educators

We celebrate and thank the following staff members for their enduring legacy of service to our district:

ENL Teachers: Nancy Bayat, Beatriz Caban, Joelle Day, and Stephen Lux

World Language Teachers: Maria Ardila and Adolfinia Mena

Bilingual Teachers: Alexis Jovel, Mirtha Sebelen, and Jaqueline Tineo

Thank you for your exemplary dedication to the students, families, and staff of the Hempstead Public Schools District. We wish you the very best in your retirement!

Looking Ahead: Professional Development

To prepare for a successful launch of the 2026–2027 school year, our upcoming professional development will focus tightly on :

- WIDA ACCESS: Self-paced and live instructional webinars focusing on the WIDA assessments.
- Targeted Co-Teaching Models – Mastering Team Teaching and Small Group Instruction to maximize peer language modeling in our integrated mainstream classrooms.
- Science of Reading for ELLs – Implementing evidence-based literacy strategies derived directly from the official research briefs published by the New York State Office of Bilingual Education and World Languages (OBEWL).
- Embedded Content Best Practices – Ensuring all future curriculum and resource training explicitly embeds instructional best practices for English Language Learners directly within the content.

Recorded Sessions



If you missed the live WIDA webinars, please take the time to watch the recorded sessions over the summer to prepare for our upcoming district-wide assessment transition:

[Link to Welcome to WIDA Vimeo recording](#)
WIDA Session 1: Introduction – An introduction to WIDA.

[Link to WIDA ACCESS Online Technology 101 recording](#)
WIDA Session 2: Logistics – A practical guide covering the operational logistics.

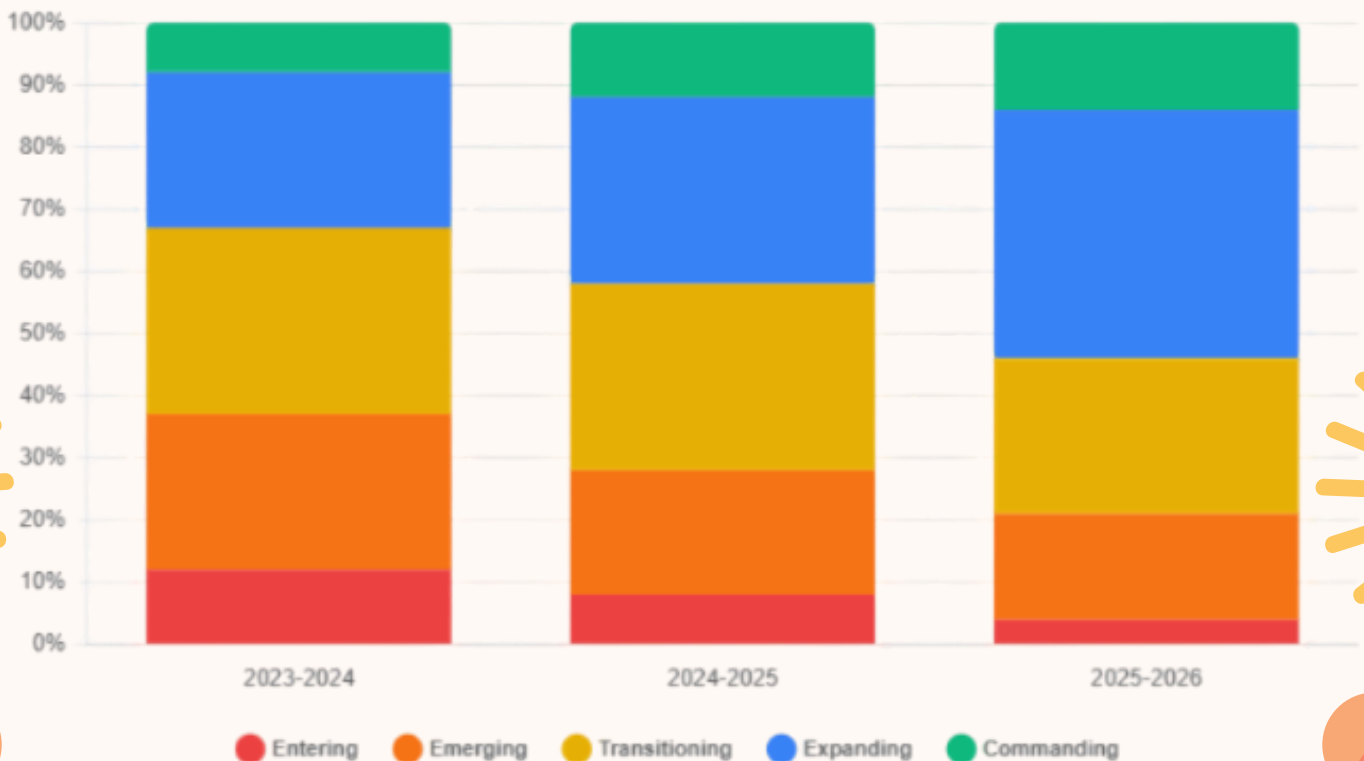
District Report 2026

Multilingual Strategic Roadmap

Celebrating growth and navigating the official transition to the WIDA Consortium for the Hempstead Public Schools District.

14%
COMMANDING

40%
EXPANDING



This chart visualizes the dramatic shift in proficiency levels from 2023 to 2026. Note the significant increase in the Commanding and Expanding categories, indicating a higher volume of students moving successfully through the language acquisition pipeline.

Language Program Expansion Models

Strategic pillars driving our district's pedagogical advancement.

A

Integrated ENL Models

Focusing on advanced co-teaching preparation and targeted instruction to maintain inclusive environments.

**Co-Teaching Preparation
Small Group Instruction**

C

Global Pipelines

Expansion of World Language sections and FLES -Foreign Language in Elementary Schools.

Target: Increasing NYS Seal of Biliteracy Earners

B

Spanish Dual Language

One-way Dual Language programs at Rhodes Academy and Barack Obama Elementary focused on translanguaging.

**RHODES ACADEMY
BARACK OBAMA**

D

NYSESLAT to WIDA

The critical transition begins in 2026. We are moving from the NYSESLAT to the WIDA ACCESS assessment consortium.

View Deployment Map ↓

Official 26-27 Transition

The WIDA Implementation Hub

Essential dates, technology requirements, and instructional standards alignment.

Timeline & Milestones

SEPTEMBER 2026

Self-paced Assessment Training Opens

Certification for WIDA ACCESS administrators begins.

FEB 1 – APR 9, 2027

Inaugural WIDA Testing Window

First district-wide administration for all ELL students.

2027-2028 SCHOOL YEAR

WIDA Screener (K-12) Adoption

Official replacement for the NYSITELL intake assessment.

WIDA Testing Formats



GRADES 1-12
Online (CBT)



KINDERGARTEN
Paper-Based

Hardware Requirements

- Headset Specifications for Speaking Test
- WIDA AMS (Assessment Management System)
- JUNE 26- Updated Manuals & Documentation

Instructional Standards Notice Crucial Alignment:

New York will **NOT** adopt WIDA English Language Development Standards. Educators must continue using New York State Academic and Linguistic Demands (ALDs) for all instructional planning.

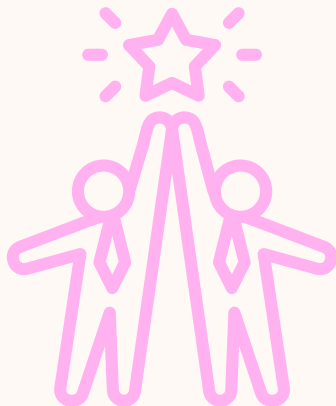
Educator Empowerment

Building teacher capacity to support multilingual excellence through specialized professional development.



Science of Reading

Utilizing the NYS Toolkit specifically designed for English Language Learners.



Advanced Co-Teaching

Focusing on collaborative preparation, planning, and specialized pedagogical roles.



Best Practices for ELLs

Embedded professional development within the core curriculum for high impact.

We look forward to another amazing and productive school year ahead!