

Failure Rates

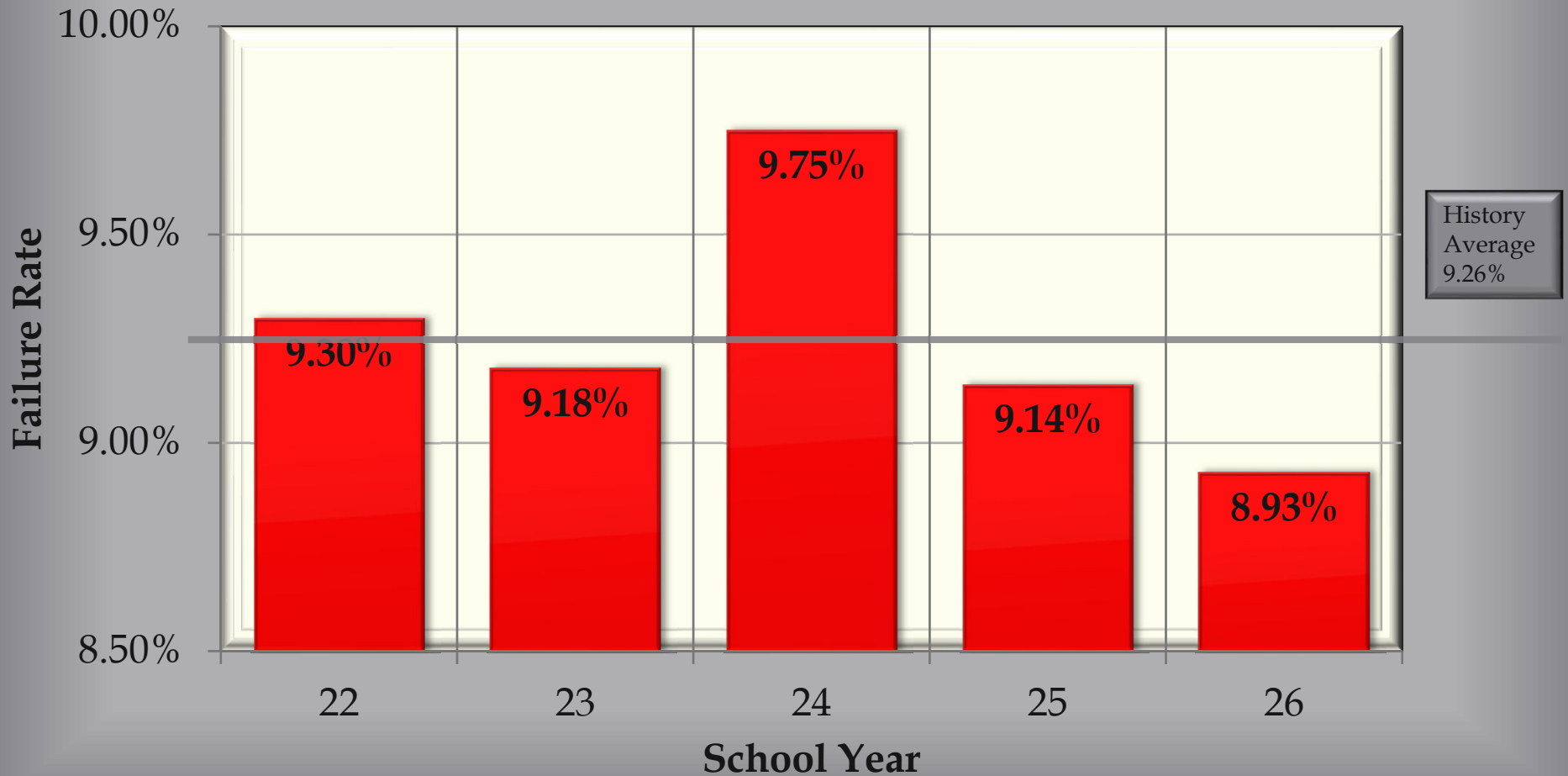


School Year 2025-2026

5 Year History

Failure Rates

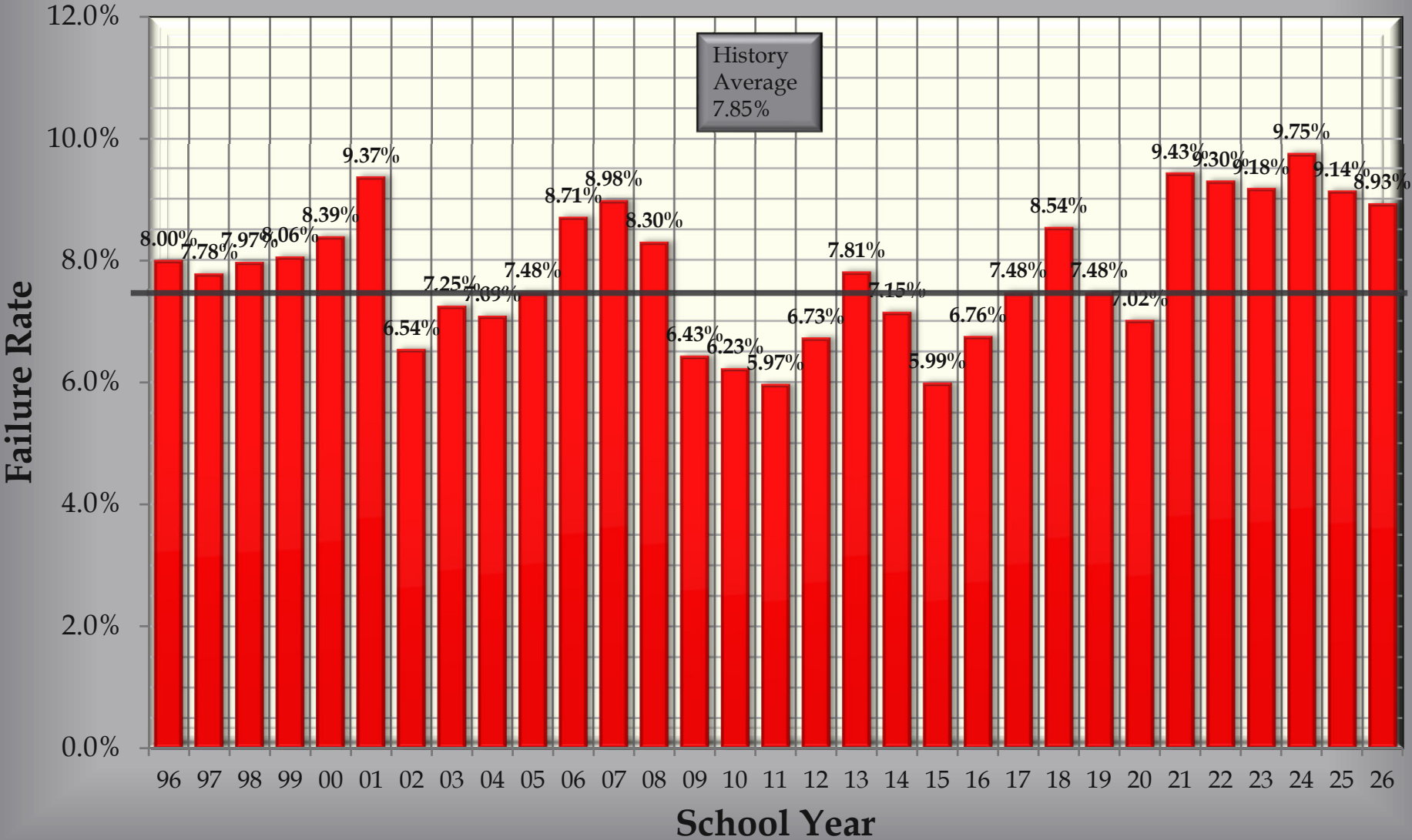
of Failing Grades Assigned vs Total # of Grades Assigned



School Years 1996-2026

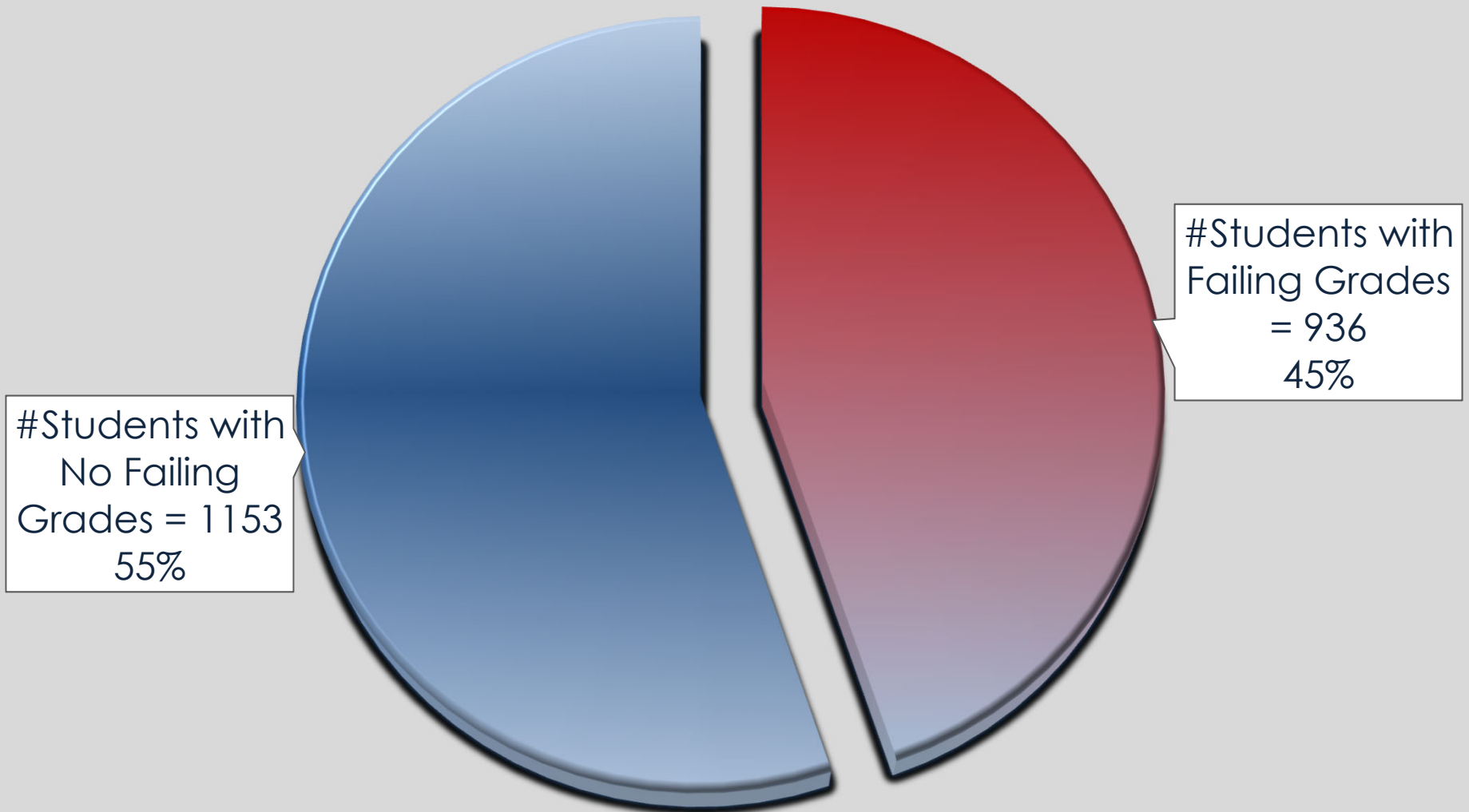
Failure Rates

of Failing Grades Assigned vs Total # of Grades Assigned



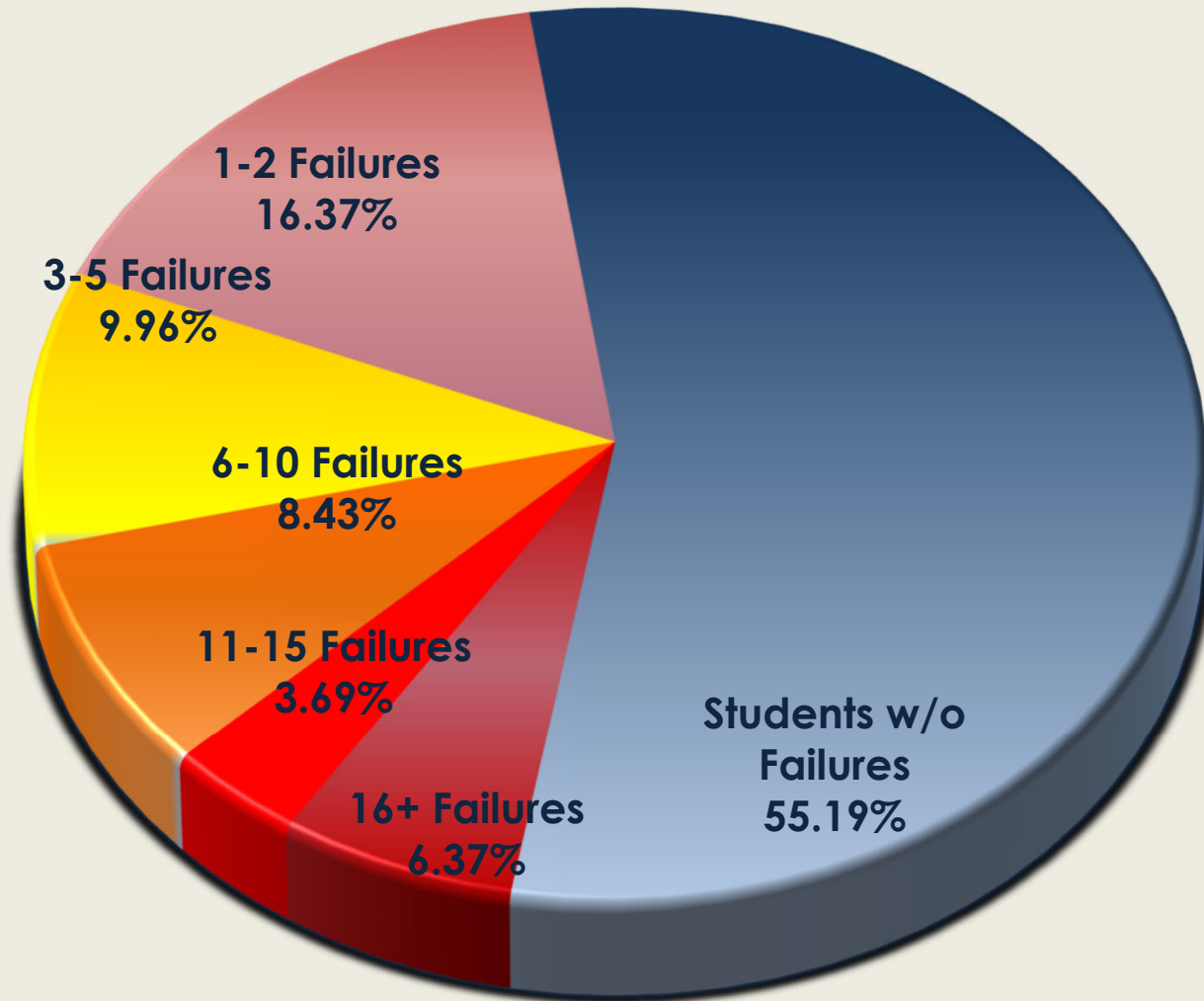
School Year 2025/2026

% of Population with Failing Grades

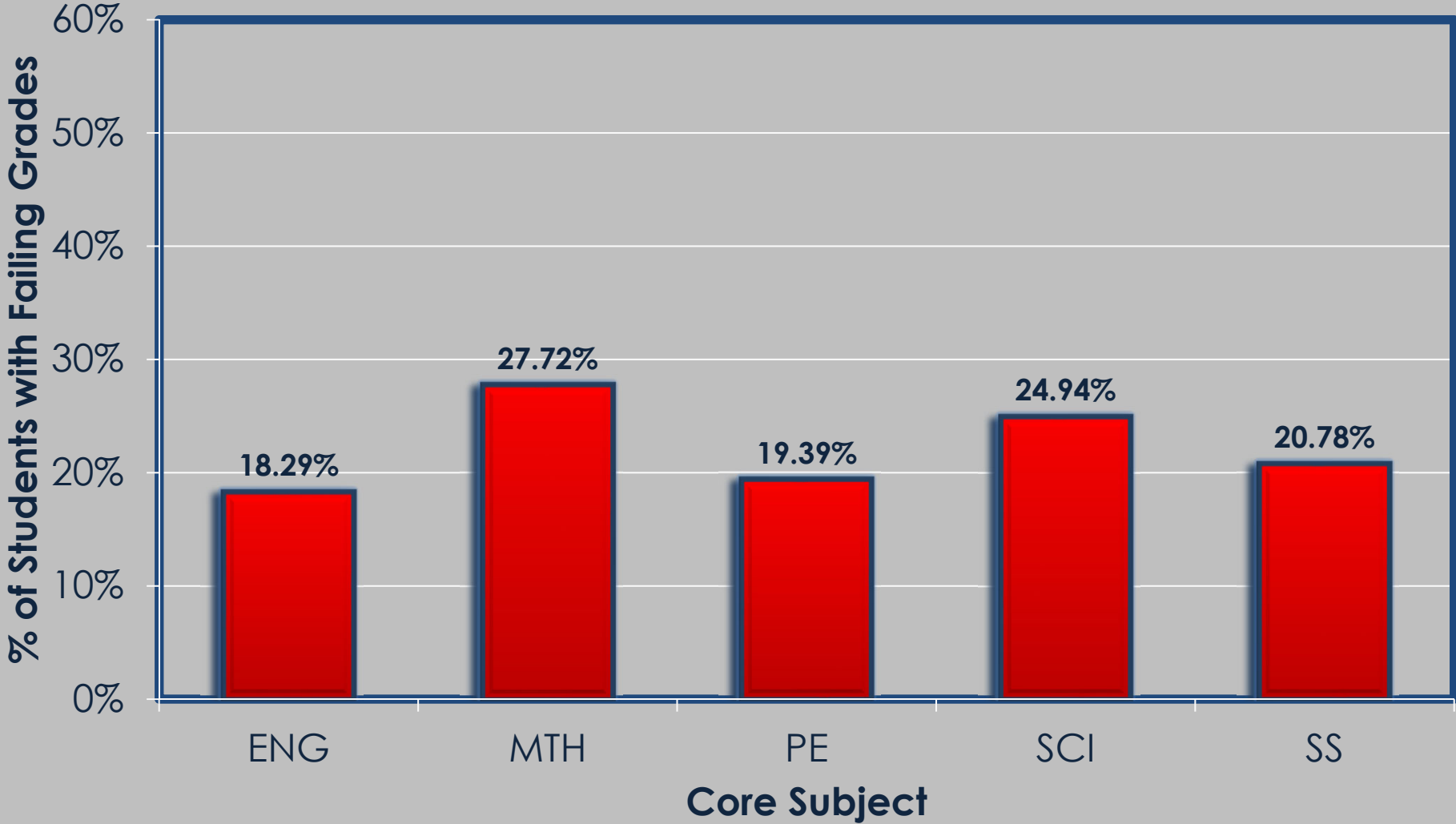


School Year 2025/2026

% of Population with Failing Grades

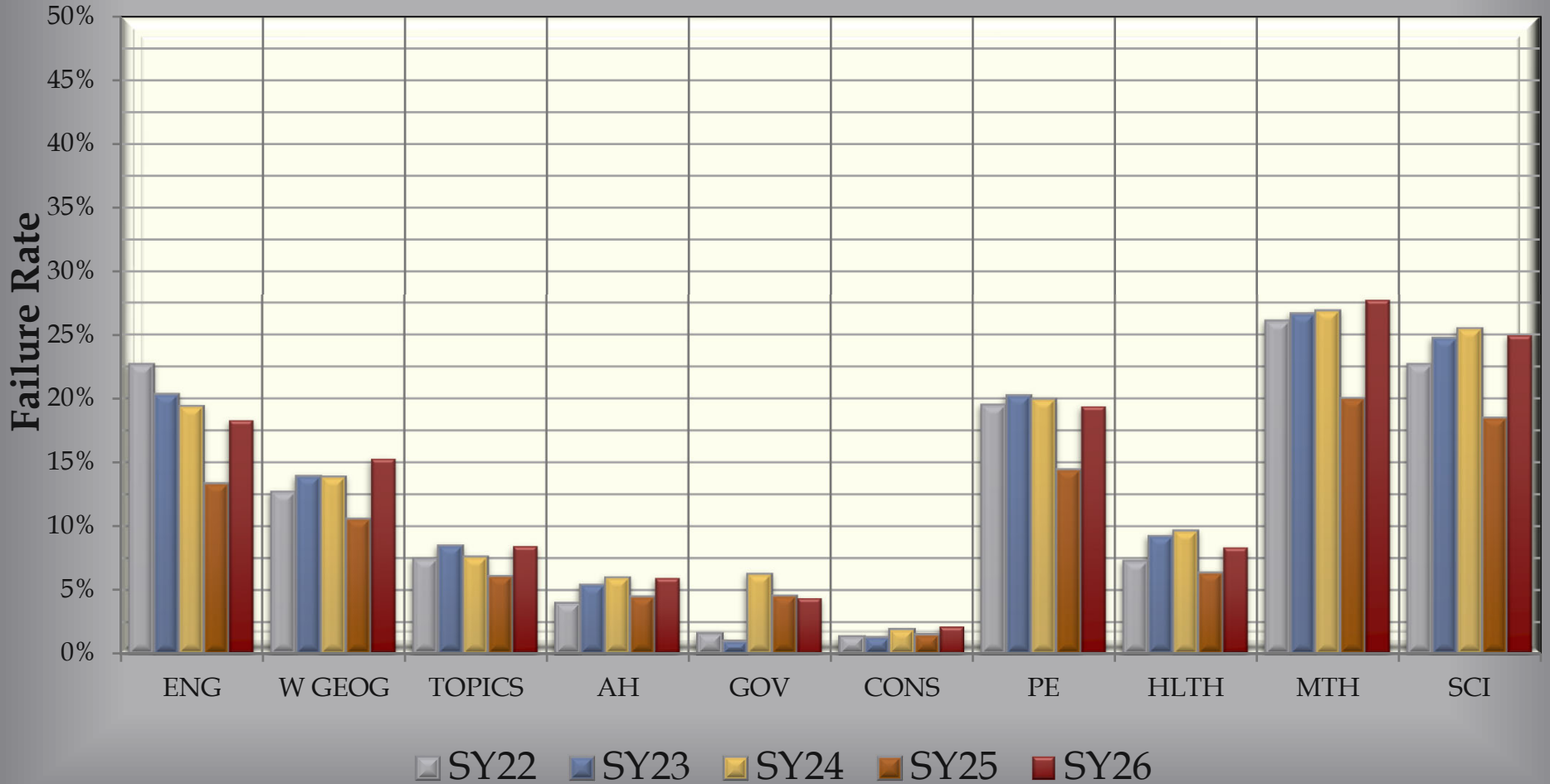


School Year 2025/2026
% of Population with Failing Grades
Unduplicated Students by Core Subject



5 Year History

% of Population with Failing Grades
Unduplicated Students Count by Graduation Requirement

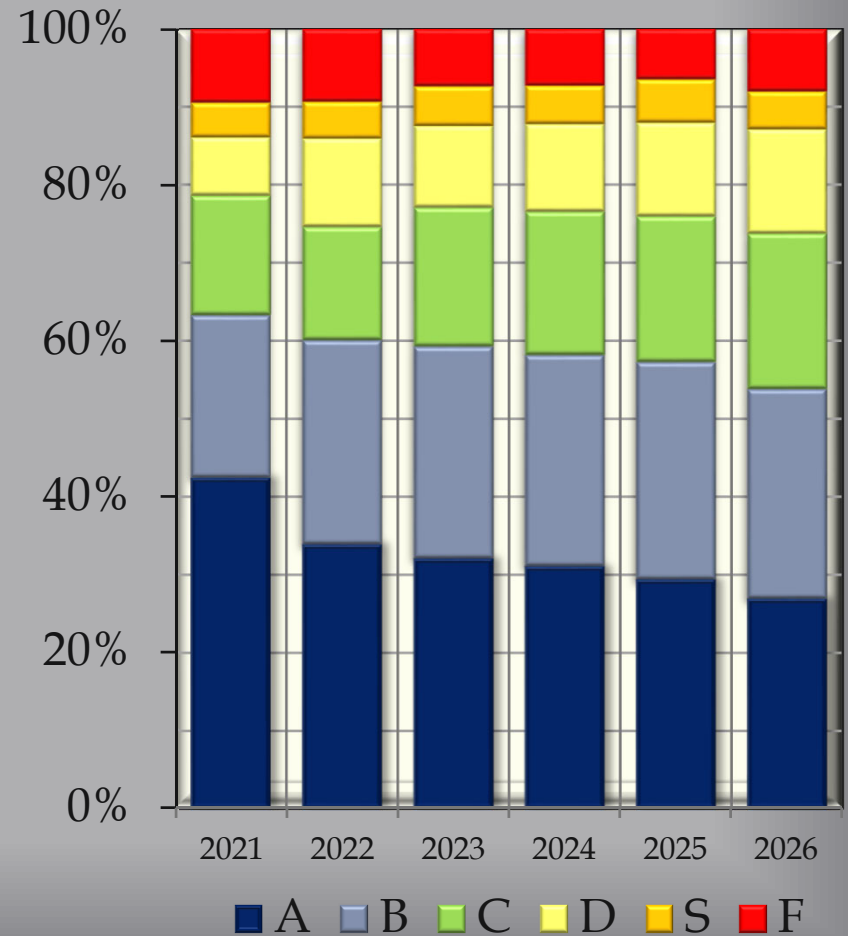


Grade Distribution - 5 Year History

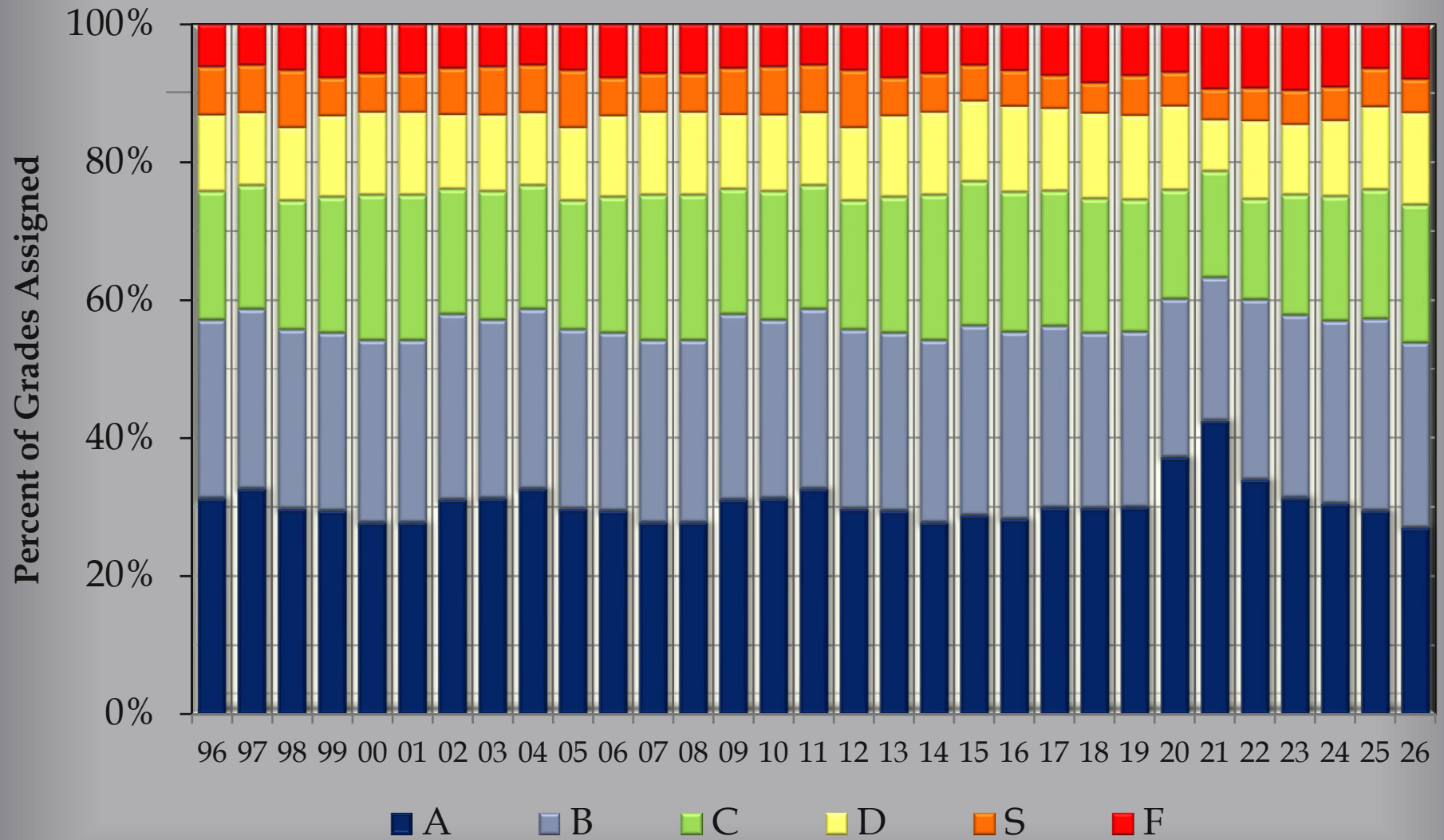


YR	A	B	C	D	S	F
2022	9110	7029	3905	3057	1274	2490
	33.91%	26.16%	14.54%	11.38%	4.74%	9.27%
2023	7756	6572	4310	2537	1228	1774
	32.08%	27.18%	17.83%	10.49%	5.08%	7.34%
2024	8414	7330	4975	3042	1340	1966
	31.09%	27.08%	18.38%	11.24%	4.95%	7.26%
2025	6723	6366	4271	2751	1267	1480
	29.41%	27.85%	18.68%	12.04%	5.54%	6.47%
2026	6098	6079	4515	3026	1103	1810
	26.95%	26.86%	19.95%	13.37%	4.87%	8.00%

Percent of Grades Assigned



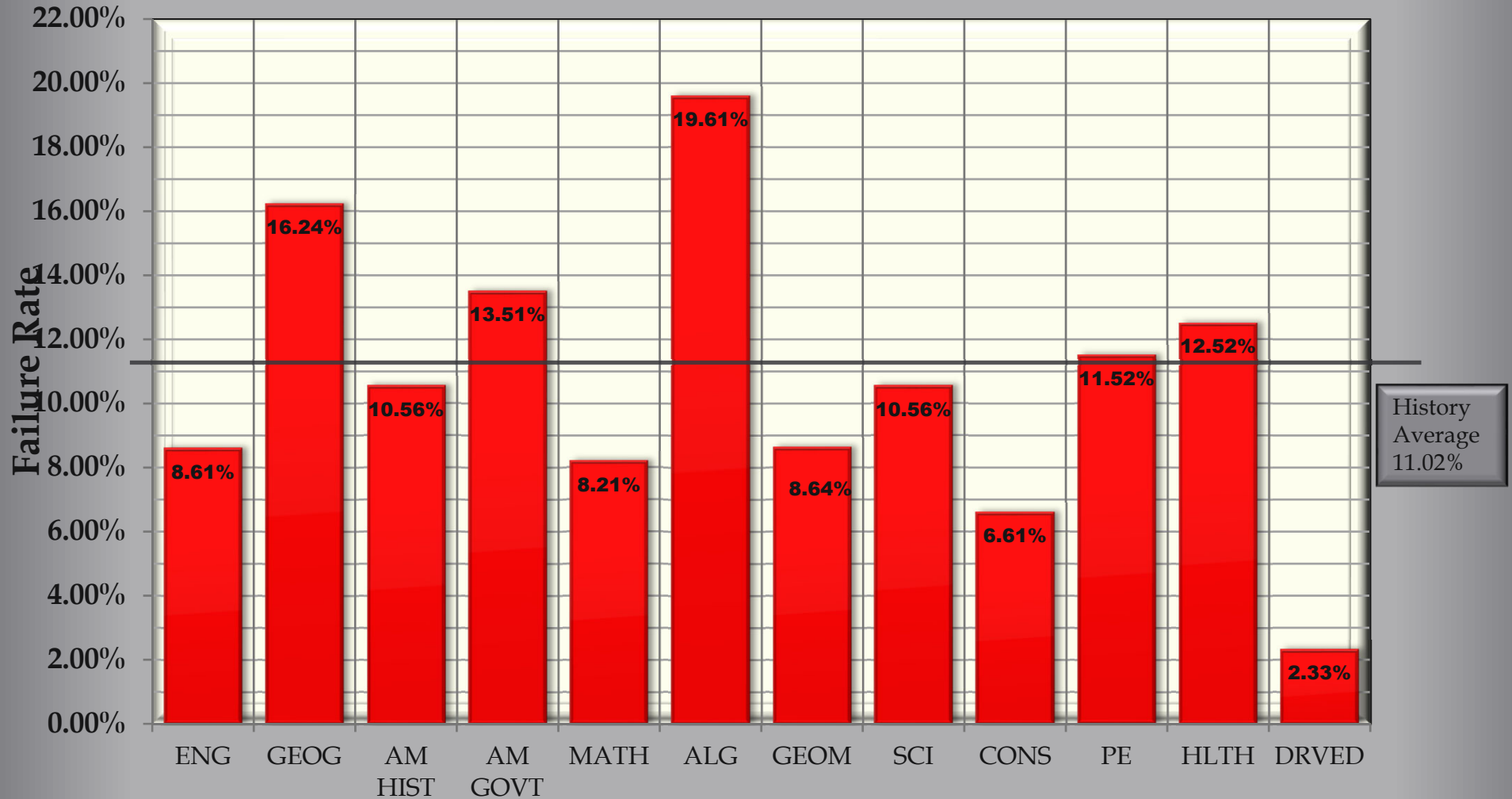
Grade Distribution - 1996 to 2026



School Year - 2025/2026

by Graduation Requirement

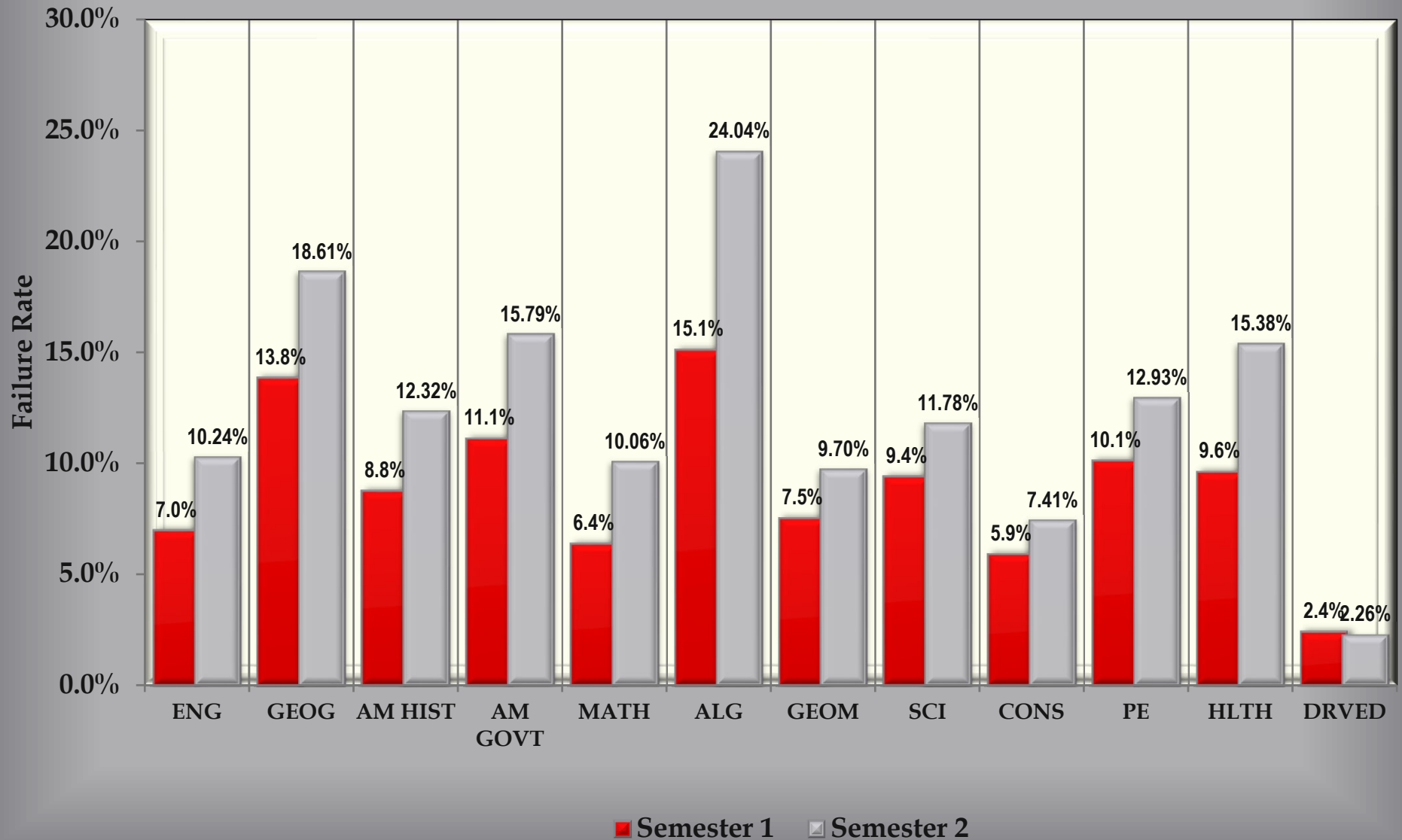
of Failing Grades Assigned vs Total # of Grades Assigned



School Year - 2025/2026

by Graduation Requirement

of Failing Grades Assigned vs Total # of Grades Assigned
Semester 1 & Semester 2



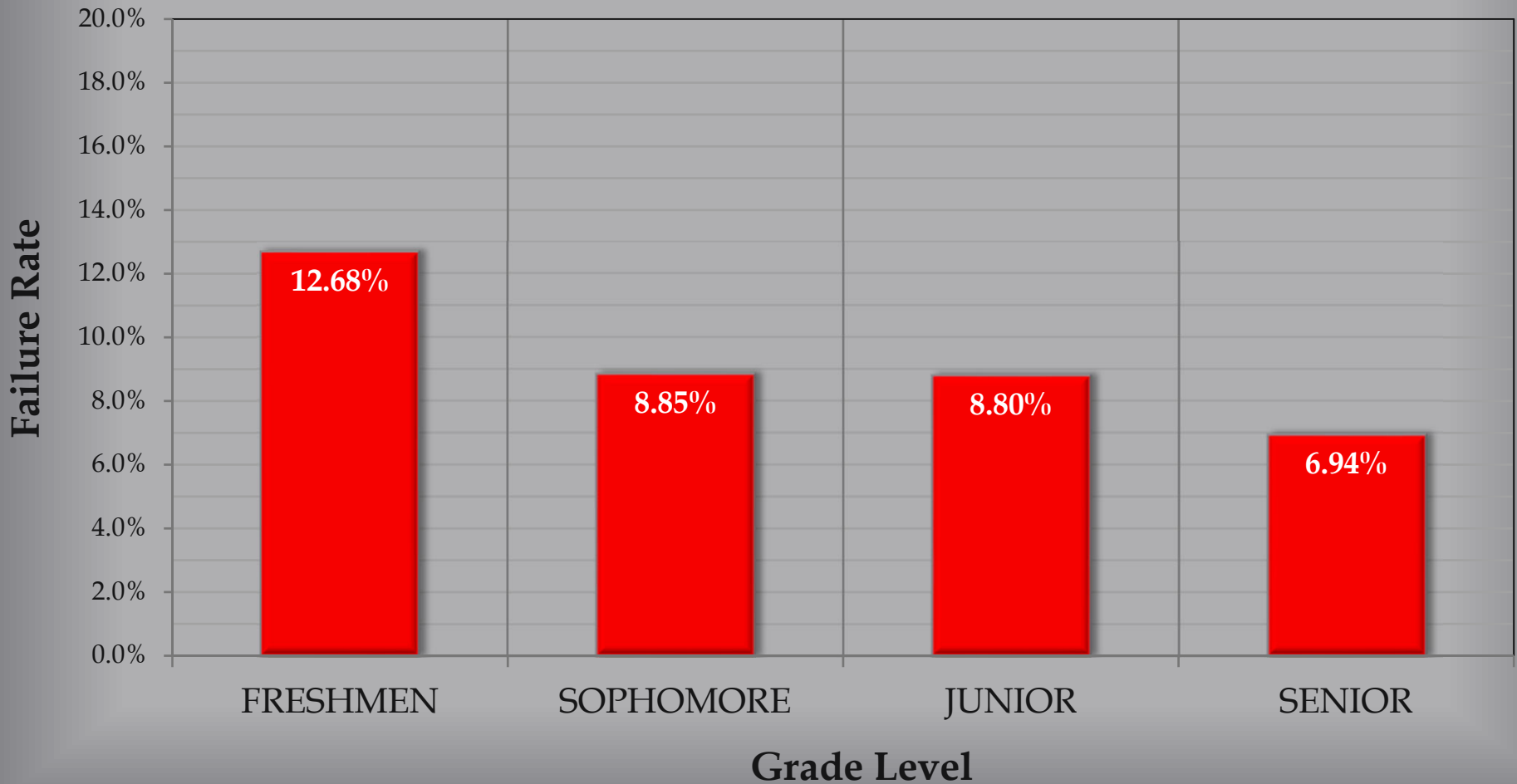
School Year - 2025/2026

Classes with Failure Rate > 20%



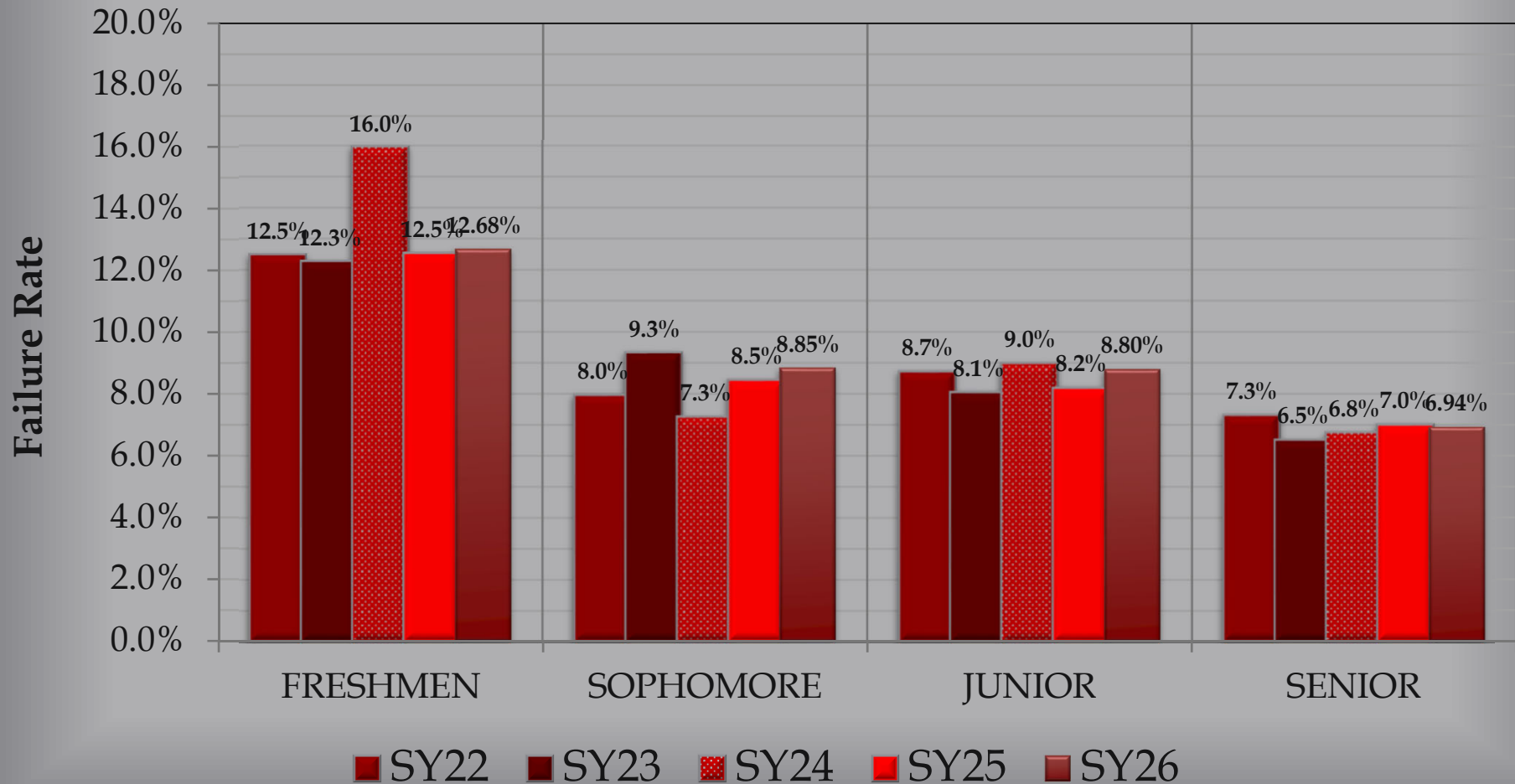
School Year 2025/2026

Failure Rate by Grade Level



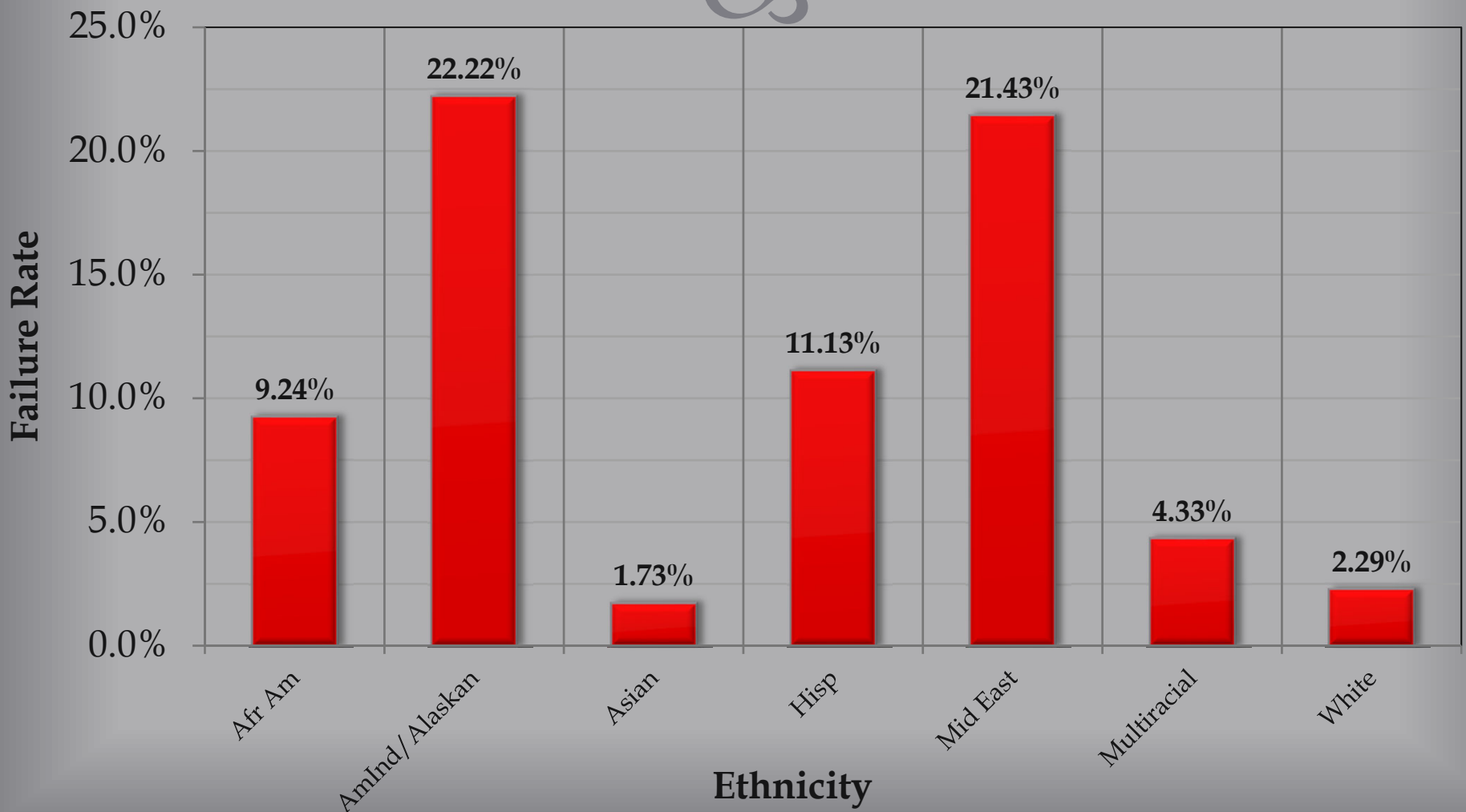
5 Year History

Failure Rate by Grade Level & School Year



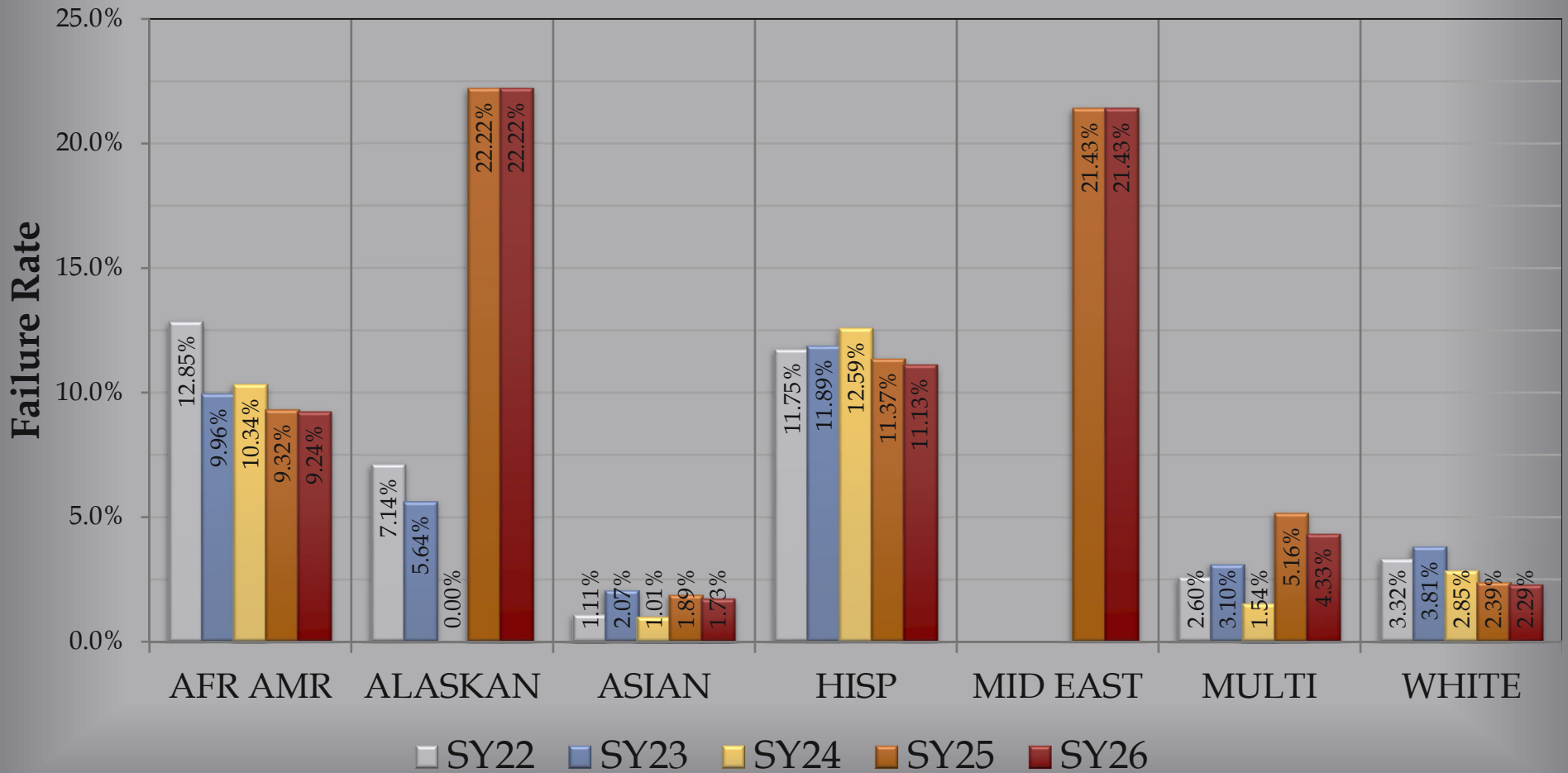
School Year - 2025/2026

Failure Rates by Ethnic Code



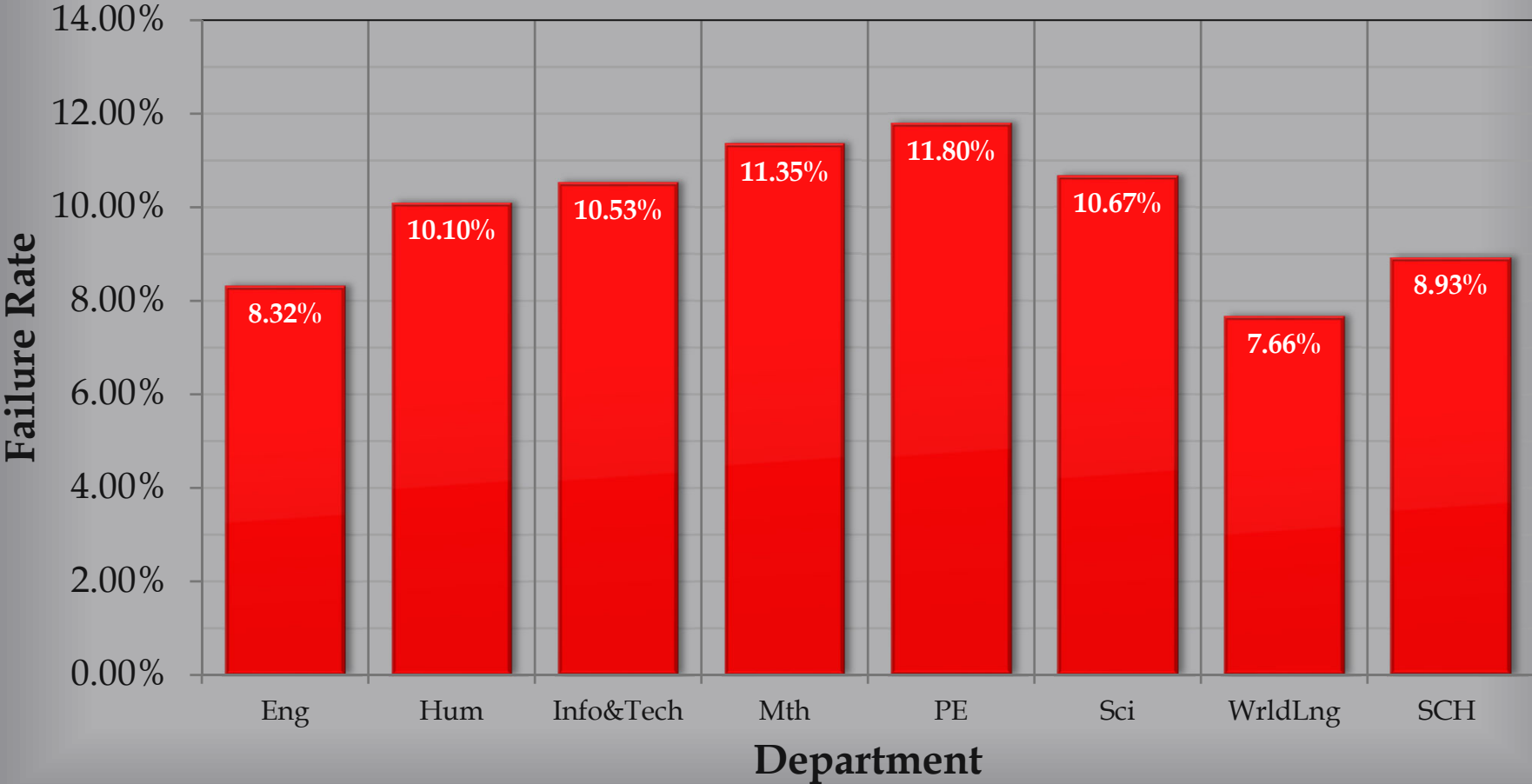
5 Year History

Failure Rates by Ethnic Code



School Year – 2025/26

Failure Rates by Department



5 Year History Failure Rates by Department

