

# Fullerton School District Local Control Accountability Plan

2026-2027 LCAP Summary for Families



**DRAFT**

---

## Fullerton School District Board of Trustees

Ruthi Hanchett • James Cho • Vanesa Estrella  
Beverly Berryman • Miguel Alvarez

*“Great Schools, Successful Kids”*

The mission of the Fullerton School District is to work collaboratively with the community to provide an innovative, high-quality educational program for all students in a safe learning environment. Our motto, “Great Schools - Successful Kids” exemplifies the belief that all students will achieve academic excellence, acquire interpersonal skills, and develop technological expertise to contribute as productive citizens in a democratic society.

1401 W. Valencia Drive, Fullerton, CA 92833 | 714-447-7400  
[www.fullertonsd.org](http://www.fullertonsd.org)

# What is the LCAP?

The Local Control Accountability Plan (LCAP) is a tool for FSD to set **GOALS**, plan **ACTIONS**, and leverage **RESOURCES** to improve **STUDENT OUTCOMES** over a 3 year period.

- Budget Overview for Parents (BOP)
- Annual Updates and Expenditures
- Educational Partner Engagement
- Plan Summary/Narrative
- Goals, Actions, and Services
- Expenditure Tables
- LCAP Instructions

Access documentation at: [www.fullertonsd.org](http://www.fullertonsd.org)

## District Overview



**21 Schools**

K-6: 15 sites | K-8: 2 sites  
Junior Highs: 3 sites  
MyConnect Academy: 1 site



**11,262**

Students  
(2025 CA Dashboard)



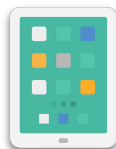
**1,659**

Employees



**11**

Gold Ribbon  
Schools



**1:1**

Student  
Devices



**20**

PBIS Platinum  
Schools

### Student Groups

English Learners **17.5%**  
Foster Youth **0.5%**  
Homeless Students **1.2%**  
Socioeconomically Disadvantaged **54.2%**  
Students with Disabilities **13.3%**

### Student Race/Ethnicity

African American **1.3%**  
American Indian **0.3%**  
Asian **24%**  
Filipino **2.5%**  
Hispanic **51.3%**  
Pacific Islander **0.2%**  
Two or More Races **5.3%**  
White **15.1%**

# What are the goals for FSD's LCAP?

There are 4 goals in the 2026-2027 LCAP, along with actions and services.

## Goal 1

**Student Achievement: All students will demonstrate proficiency or growth toward proficiency in ELA and math.**

- Professional Development
- High Quality Staff & Supports
- Advanced Coursework
- College & Career Readiness
- Art Programs
- Progress Monitoring
- Standards-Aligned Curriculum
- English Learner Support
- Academic Intervention
- Enrichment
- Strategic Use of Data
- Special Education Student Support
- Response to Intervention
- Gifted & Talented Education
- Preschool & Universal TK
- Dual Immersion Programs
- Culturally Responsive Instruction
- Expanded Learning

**Metrics: District assessments, ELPAC, CAASPP, CA Dashboard English Learner Progress Indicator, Williams Audit, LCAP Survey, Preschool Early Development Index**

## Goal 2

**Technology/Digital Literacy: Access to high quality digital tools, infrastructure, resources, personalized learning technology and professional learning so that all students have opportunities to access engaging online instructional resources and can demonstrate digital and informational literacy skills required for college and career success.**

- Infrastructure & Internet Access
- 1:1 iPad Program (Grades 3-8)
- Professional Development
- Parent & Student Training
- Strategic Support for Foster, Low-income, & Homeless Youth
- Student Agency Opportunities
- Digital Wellness
- Technology, Library, & Media Assistants
- Project-Based Learning
- Digital Resources & Support

**Metrics: Access to tech, staff training, staff teaching informational literacy, AI integration**

## Goal 3

**Safe & Secure Environment: All FSD departments and school sites will work to provide a safe and secure environment that promotes the physical, social and emotional health and well-being of all staff and students.**

- Security Personnel
- Safety Training & Preparedness
- Physical Social, Emotional Health Supports
- Social Emotional Learning Curriculum
- Restorative Practices
- Digital Citizenship Curriculum
- Attendance Plans
- Wrap-Around Services
- Nurses & Health Assistants
- Mentoring and Check-Ins
- Mental Health Support
- Foster Youth & Homeless Services
- Facility Upgrades
- Positive School Climate
- Structured Play Time

**Metrics: Facilities audits, attendance, absenteeism, suspensions, climate surveys**

## Goal 4

**Parent & Community Engagement: Effective communication and meaningful opportunities to support and celebrate student learning and cultures.**

- Public Information Officer
- Culture of Inclusion
- Parent Engagement in Student Success
- Champions for Learning/PTA
- Parent Trainings (SEL, PBIS, MTSS)
- Parent Advisory Groups
- Multilingual Taskforce
- Cultural Connectedness & Belonging Taskforce
- Foundations
- Pre-K/TK/K Orientations
- Community Partnerships
- Student Showcase Events
- Translation Support

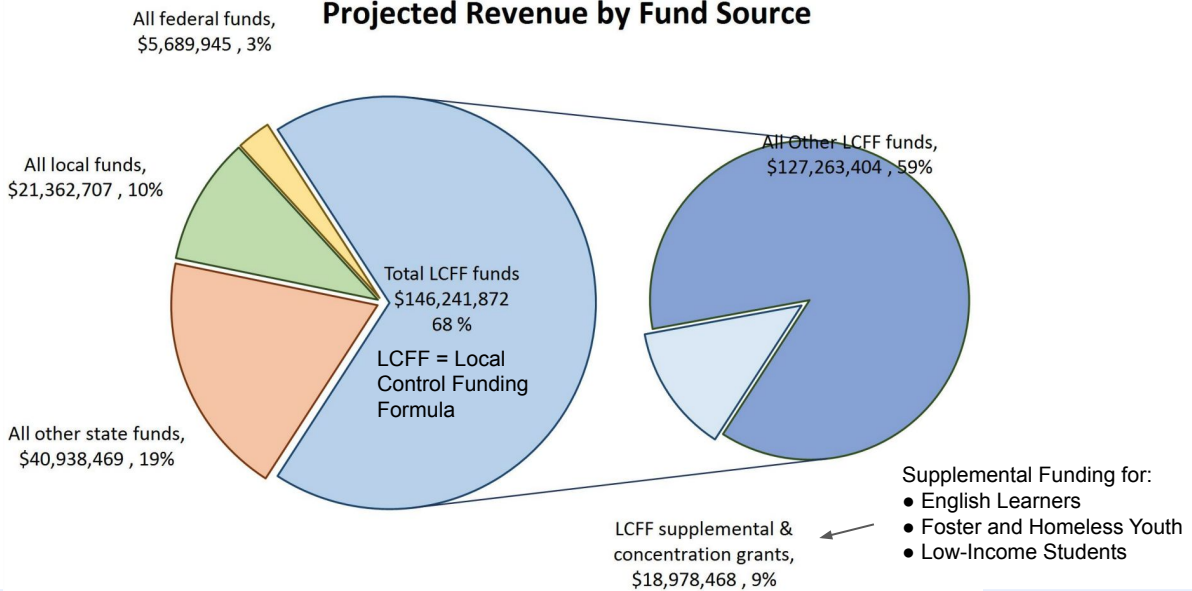
**Metrics: Parent engagement & climate survey ratings, workshop attendance, LCAP survey participation**

# Partner Engagement & Funding Overview

## How does FSD involve educational partners?

Every year, the District convenes the LCAP Advisory Committee to actively involve educational partners in the development of the LCAP. Representatives include parent advisory groups (DELAC, PTA), Fullerton Elementary School Management Association, employee bargaining units (FETA, CSEA), educational foundations (the Fullerton Educational Foundation, All the Arts Foundation), and district staff. These representatives provide insights about instructional programs in relation to FSD Board goals and California's eight state priorities. The committee meets four times annually to review metrics and make recommendations.

**Projected Revenue by Fund Source**



**Estimated FSD 2026-2027 LCFF = \$146,241,872**

## The LCAP must meet 8 required state priorities:

### Conditions of Learning

- Credentialed teachers, standards aligned curriculum, safe facilities.
- Implementation of CA State Standards.
- Student access to a broad course of study.

### Pupil Outcomes

- Improved achievement, English proficiency, and college/career preparedness.
- Measure other student outcomes related to required areas of study.

### Engagement

- Parent and community involvement in decision-making
- Efforts to increase attendance; reduce absenteeism/suspensions.
- School climate and safety focus.