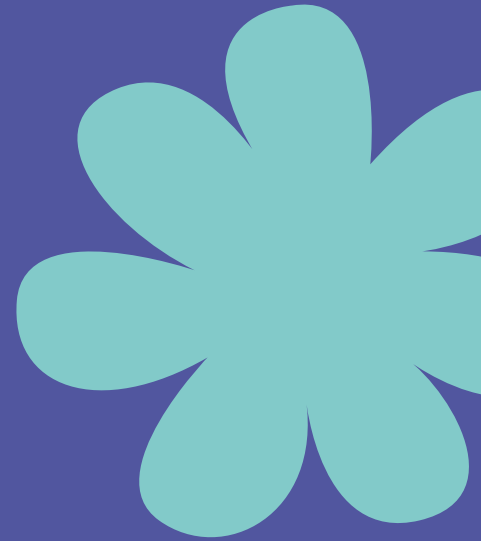
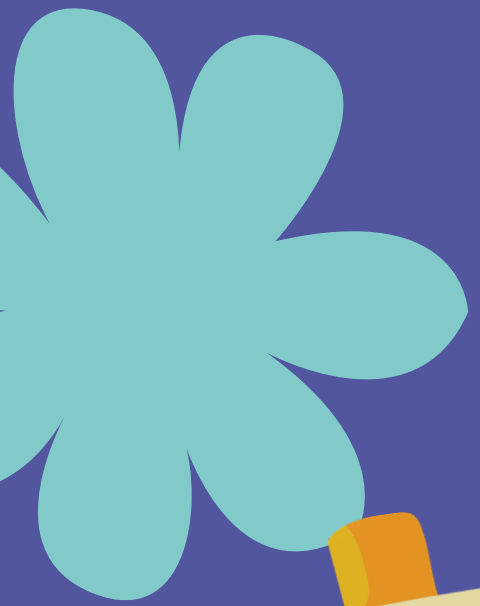


# Arrival & Dismissal

2026-2027



# Arrival Procedures



# Arrival

All students should arrive at school between 7:15am & 7:45am.

Students arriving to school after 7:45am are tardy & must be checked in by an adult through the front office.



# Car Riders ✨ ✨

All PreK-5<sup>th</sup> Grade Students will be dropped off in the mornings in the front driveway on Jefferson Dr.

Duty teachers will be present to make the line go as quickly as possible. To also assist with efficiency students should exit the vehicle as soon as your car enters the circle drive no matter what spot you stop at. **DO NOT WAIT** until you pull up to the first spot by the front door for your student to exit



# Car Riders



Students should be ready to exit their car once they are in the driveway. This means they are unbuckled, have their backpack on & have already said their goodbyes.

Having students ready to depart their vehicle greatly increases the speed of our car line.

Upon arrival to campus, students are to report directly to the Cafeteria if they need breakfast or to their assigned grade level area.

Breakfast will be unavailable after 7:45am. If your student needs breakfast they must be to school by 7:40am



# Bus Riders ✨

Bus transportation is provided for students who live in our zone and are more than 1 mile from campus.

Students are monitored while riding & misbehavior can result in suspension from riding the bus. Students arriving on bus will be dropped off at the front entrance on Jefferson Dr.

Upon arrival to campus, students are to report directly to the Cafeteria if they need breakfast or directly to their assigned grade level area.



# Walkers / Bike Riders

Address will be verified at the beginning of the year to ensure students are eligible for the privilege of walking/biking to school. Student must live in zone & less than 1 mile from campus to qualify to walk/bike to school.

Students are expected to walk/bike straight to school. Crossing guards are available to cross students at the intersection of University Blvd. & Jefferson Dr. Students should enter school from the front entrance.

Students who ride their bike should park them at the provided bicycle racks. Students are expected to remain on the sidewalks as they bike to and from school.

Upon their arrival to campus, students should report directly to the Cafeteria if they need breakfast or to their assigned grade-level area.

# Dismissal Procedures



# Dismissal

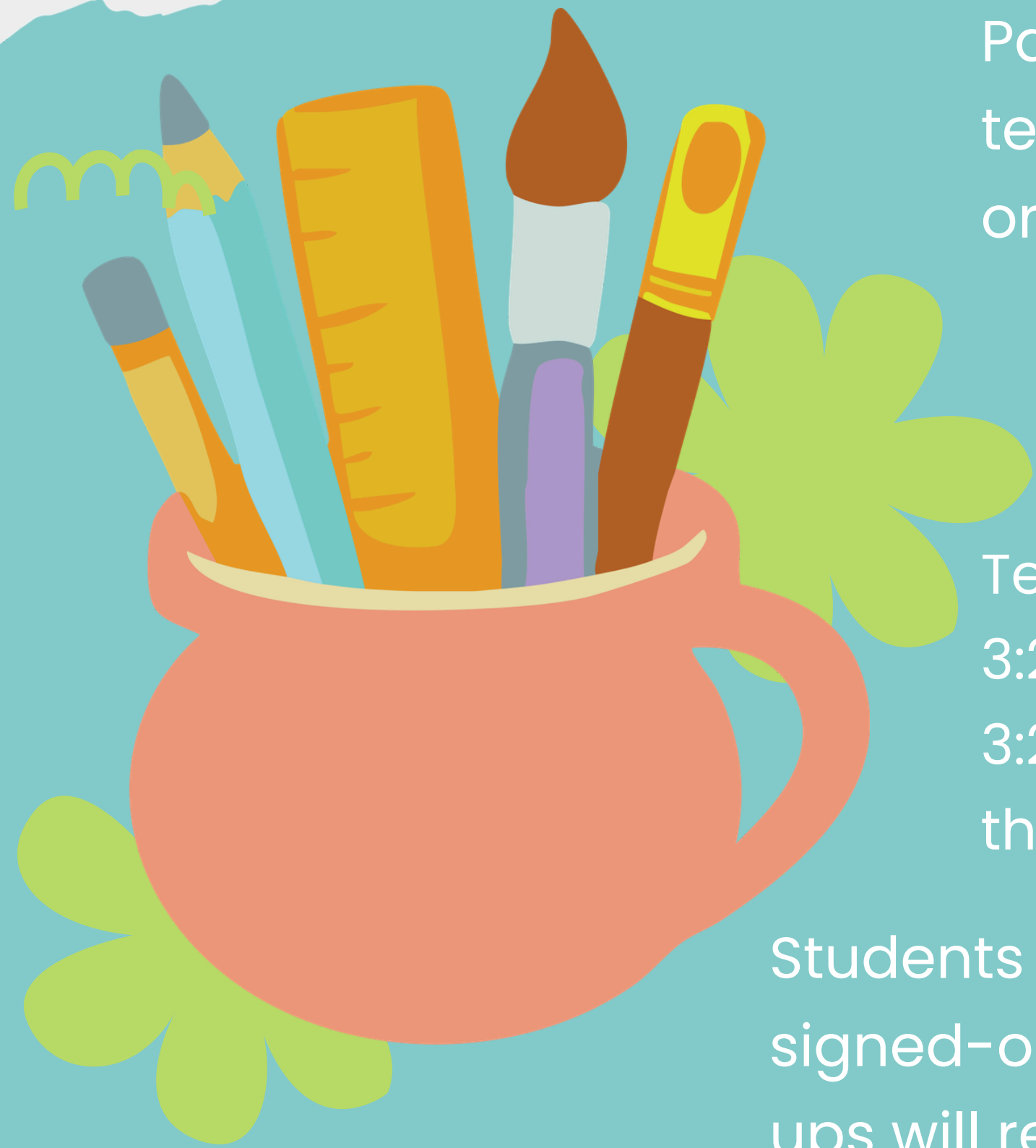


Parents will NOT be allowed to call the Office or teachers to change how their student is getting home or Check-Out after 2:30pm

All students will start being dismissed from campus between 2:55–3:00pm until 3:20pm.

Teachers & Staff are on duty to monitor students until 3:20pm. If you know you cannot be on campus daily by 3:20pm to pick up your student, please be sure to enroll them in Extended Day.

Students who are picked-up after 3:20pm must be signed-out in the Front Office. Continual late pick-ups will result in CWA Attendance Investigations.



# Car Riders

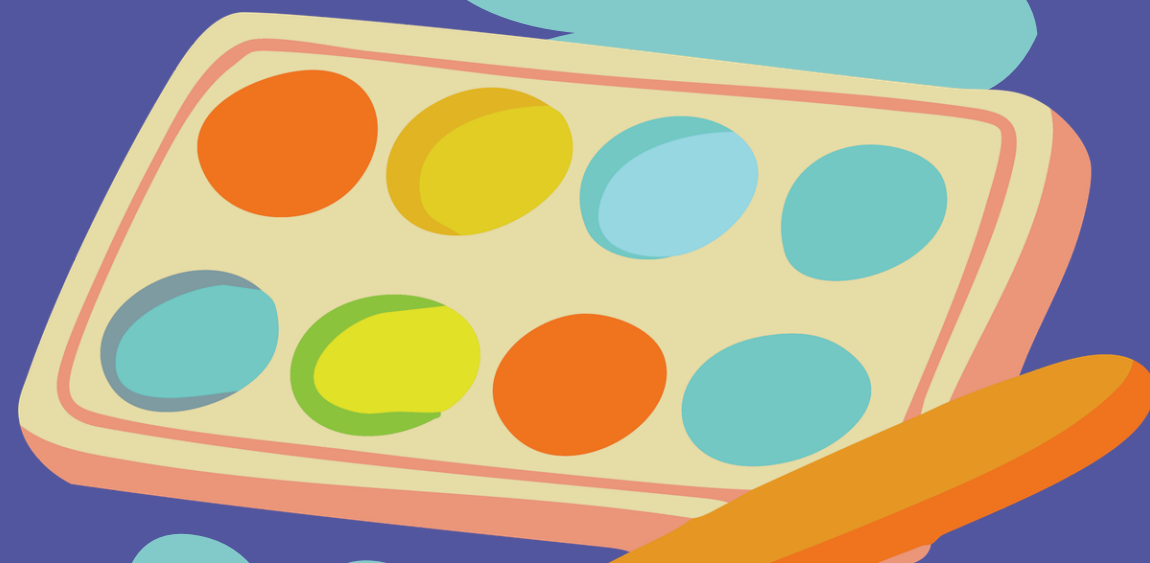


PreK, Kinder & First Grade Students who DO NOT have a sibling in 2<sup>nd</sup> Grade or Above will be picked up at the Back Gate on Washington St.

All other Car Rider Students (PK-1<sup>st</sup> Graders with siblings in 2<sup>nd</sup> Grade & above & ALL 2nd-5th students) will be picked up in the Front Driveway on Jefferson Dr.

All parents must stay in their vehicle & remain in line for their students to be called for dismissal. Do NOT get out of your vehicle & walk to meet your student

Car Rider students will receive a Folder to place in their car. We ask all parents to have this Folder **VISIBLE** at dismissal to help ensure our line moves as quickly as possible.

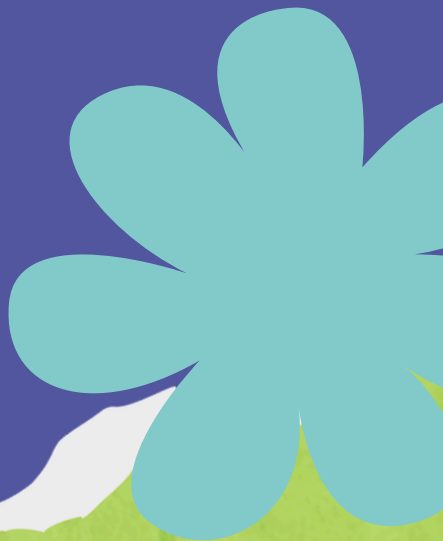




# Bus Riders



Bus Riders will load buses & dismiss  
from the front driveway on  
Jefferson Drive.



# Walkers / Bike Riders ✨ ✨



Approved walkers will be released at the east doors on Jefferson Dr. We ask adults to meet their child at the sidewalk. Approved Walkers should NEVER have an adult park on the side street or our empty lot to pick them up. If you are picking up your student in a vehicle than they must be CAR RIDERS.



Please be sure to have a plan in place with your student for Rainy Days. Walker & Bike Riders students should know whether they will still walk/bike or become Car Riders upon rain at dismissal. This information should also be communicated by the parent to your student's teacher & to school administration.

