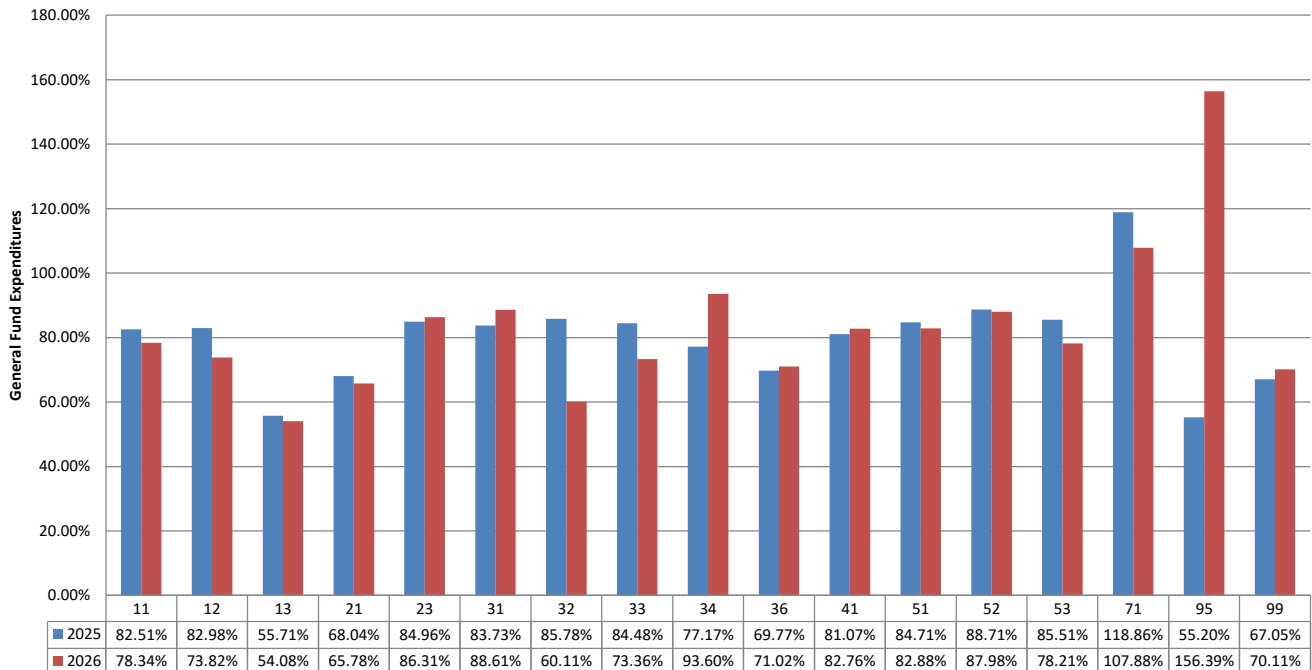


**TOMBALL INDEPENDENT SCHOOL DISTRICT  
FINANCIAL COMPARISON REPORT  
As of April 30, 2026  
General Fund, Food Service, and Debt Service Funds  
(AMOUNTS IN \$000)**

	<b>Budget</b>	<b>Actual</b>	<b>% of Budget Realized / Expended</b>
<b>General Fund Revenues</b>			
Property Taxes and P&I	\$ 121,475	\$ 114,300	94.1%
Co-Curricular Activity	320	615	192.2%
Investment Income	2,506	3,935	157.0%
Rents, Fees, Misc.	88	2,173	2476.4%
State Rev. - Foundation Program	104,195	73,478	70.5%
State Revenue - TRS On-Behalf	12,500	9,252	74.0%
State Revenue - Other Programs	0	0	0.0%
Federal Revenue Programs	1,064	422	39.6%
<b>Total General Fund Revenues</b>	<b>\$ 242,148</b>	<b>\$ 204,175</b>	<b>84.3%</b>
<b>General Fund Expenditures by Function</b>			
11 Instruction	\$ 156,251	\$ 122,402	78.3%
12 Instr. Resource & Media Services	2,641	1,950	73.8%
13 Curriculum Dev./Instr. Staff Development	1,156	625	54.1%
21 Instructional Leadership	5,994	3,943	65.8%
23 School Leadership	12,530	10,815	86.3%
31 Guidance & Counseling Services	7,767	6,883	88.6%
32 Social Work Services	107	64	60.1%
33 Health Services	2,858	2,097	73.4%
34 Pupil Transportation	10,561	9,885	93.6%
36 Co-curr./Extracurr. Activities	5,159	3,664	71.0%
41 General Administration	7,664	6,343	82.8%
51 Plant Maintenance & Operations	22,889	18,970	82.9%
52 Security & Monitoring	3,095	2,723	88.0%
53 Data Processing Services	3,888	3,041	78.2%
61 Community Services	1	28	2823.6%
71 Leases	361	230	63.8%
95 Juvenile Justice Alt. Ed. Program	14	22	156.4%
99 Other Intergovernmental	1,520	1,066	70.1%
<b>Total General Fund Expenditures</b>	<b>\$ 244,456</b>	<b>\$ 194,751</b>	<b>79.7%</b>

**Budget Targets:**

**This chart represents the percentage actually expended of the appropriations approved by the Board by Function.**



**TOMBALL INDEPENDENT SCHOOL DISTRICT  
FINANCIAL COMPARISON REPORT  
As of April 30,2026  
General Fund, Food Service, and Debt Service Funds  
(AMOUNTS IN \$000)**

	<u>Budget</u>	<u>Actual</u>	<u>% of Budget Realized / Expended</u>
<b><u>Food Service Fund Revenues</u></b>			
Food Sales	\$ 6,842	\$ 5,143	75.2%
State Revenue - TRS On-Behalf	530	190	35.9%
Federal/State Reimbursement	5,455	3,692	67.7%
Total Food Service Fund Revenues	<u>\$ 12,827</u>	<u>\$ 9,025</u>	70.4%
<b><u>Food Service Fund Expenditures</u></b>	<u>\$ 12,904</u>	<u>\$ 8,910</u>	69.0%
<b><u>Debt Service Fund Revenues</u></b>			
Property Taxes and P&I	\$ 70,695	\$ 67,740	95.8%
Investment Income	805	639	79.4%
State Rev.-Foundation Allocation	6,000	14,314	238.6%
Sale of Bonds	0	1,676	0.0%
Total Debt Service Fund Revenues	<u>\$ 77,500</u>	<u>\$ 84,369</u>	108.9%
<b><u>Debt Service Fund Expenditures</u></b>	<u>\$ 77,500</u>	<u>\$ 83,767</u>	108.1%

**\*\*Review additional tabs (worksheets) for reconciliations of amendments to adopted revenue and expenditure appropriations.**



