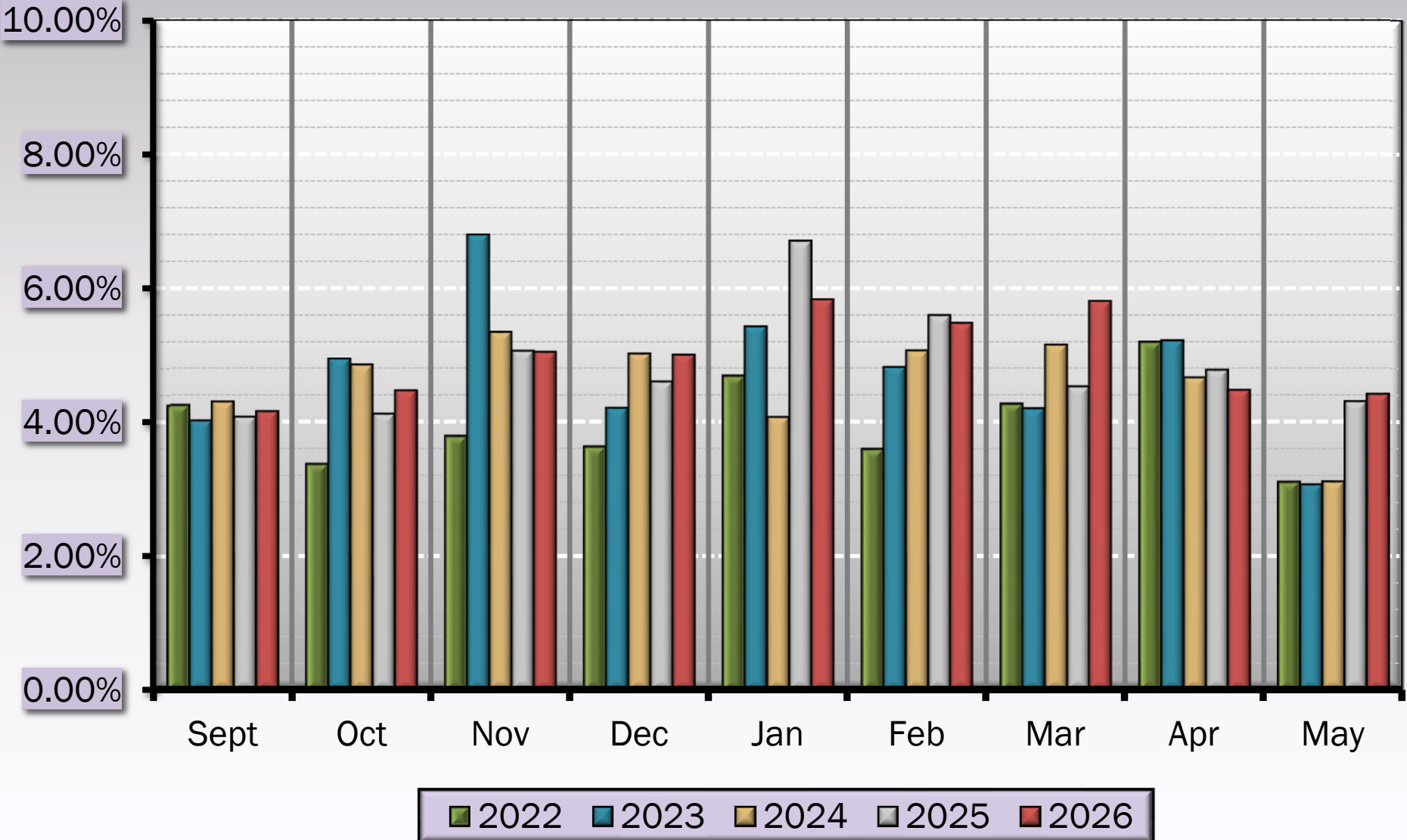


Monthly Attendance

2025/2026

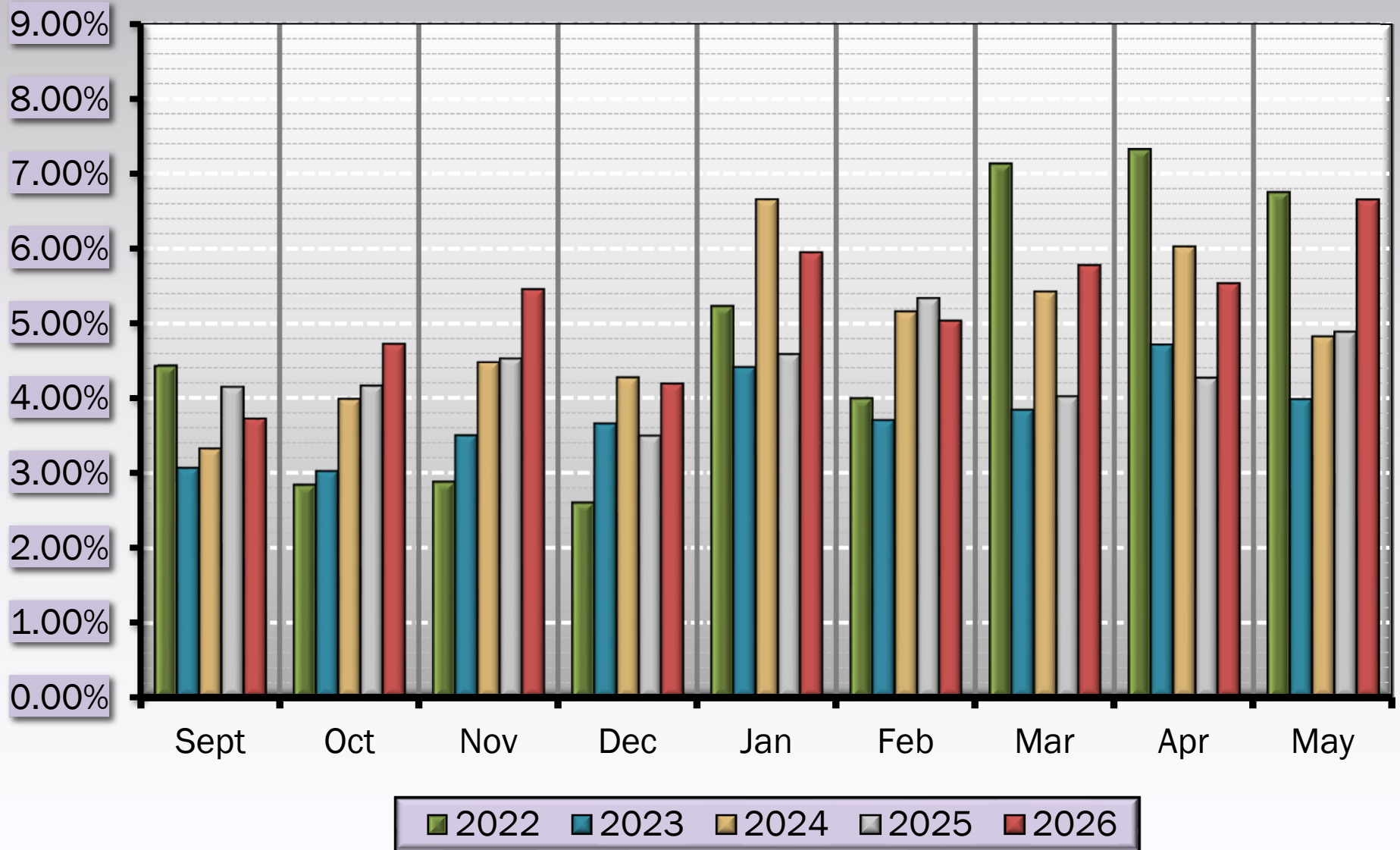
Absence Reason Code Summary

Excused Absences



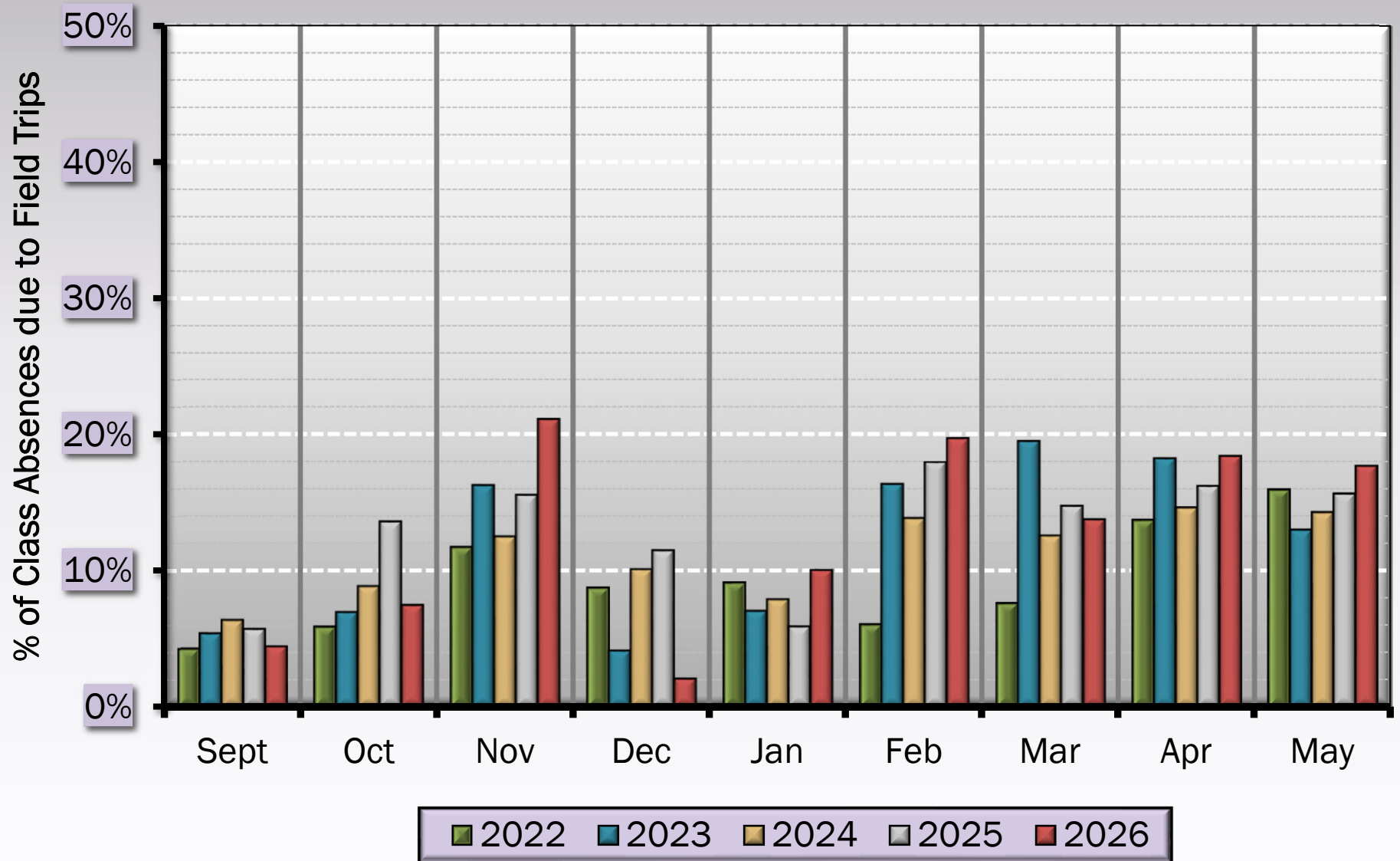
Absence Reason Code Summary

Unexcused Absences



Field Trip Codes by Month

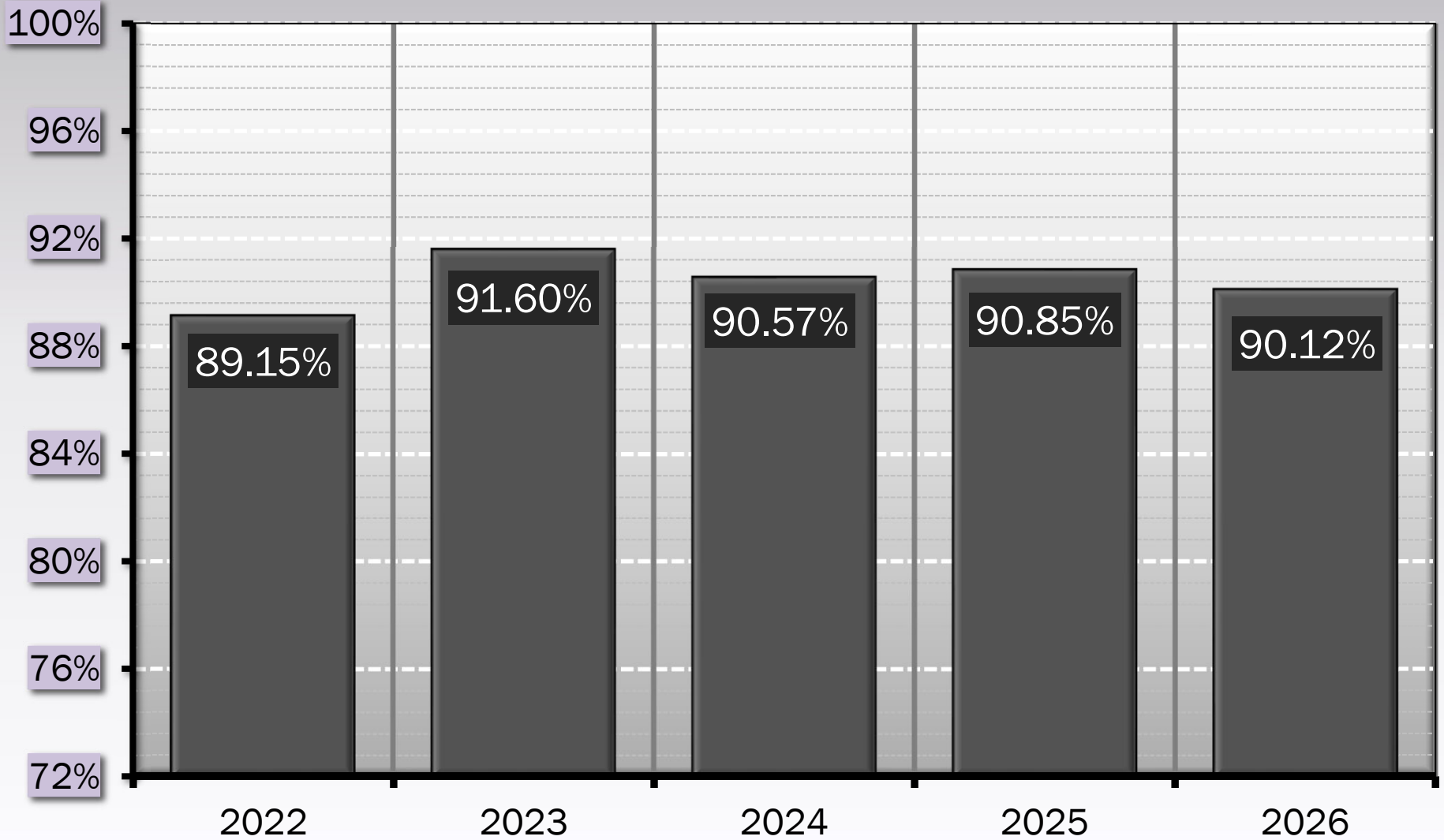
% Of Class Absent Due to Field Trips



Annual Attendance Rates by School Year

School Year 2026

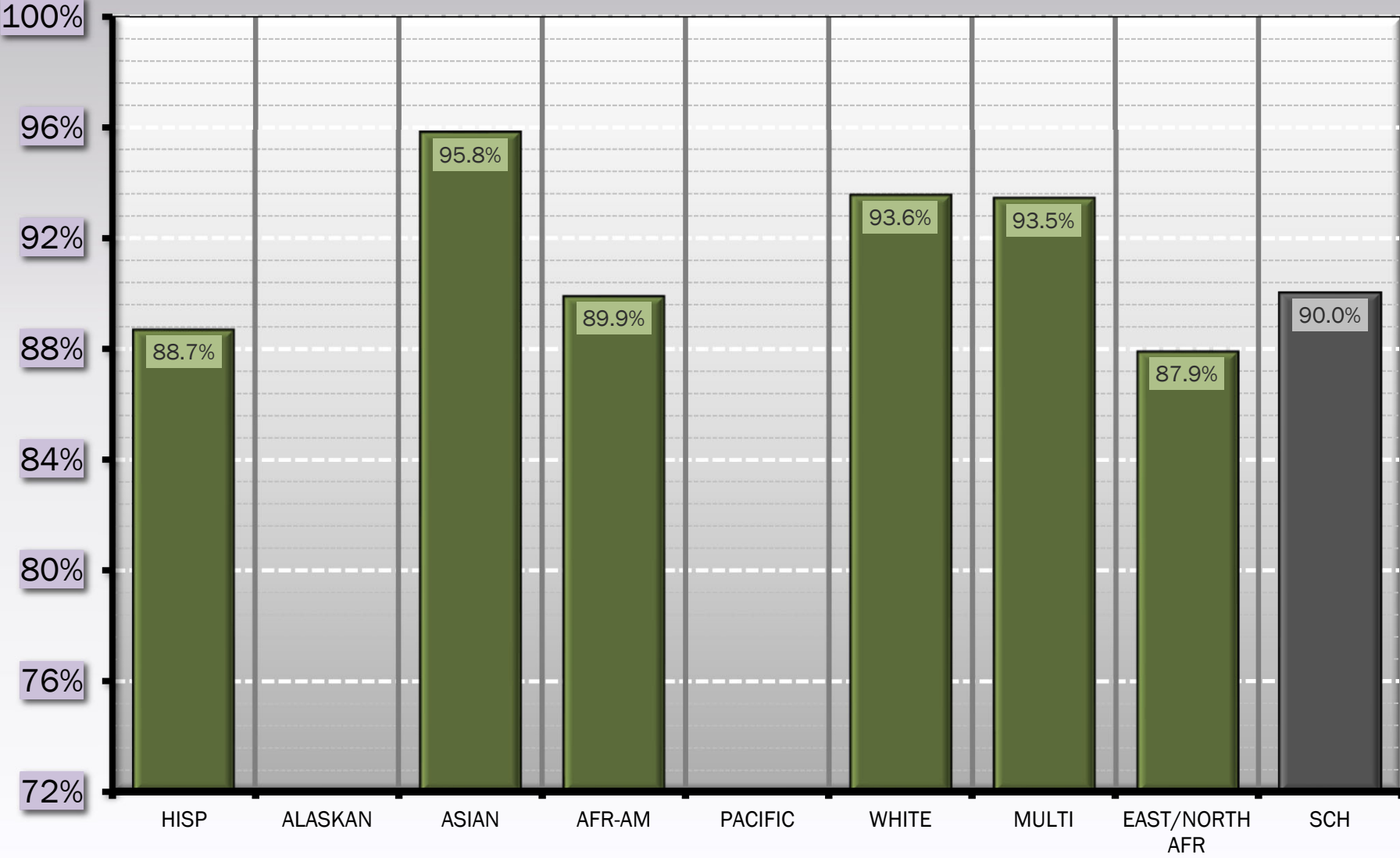
(Recalculated Numbers)



Attendance by Ethnic Group

School Year 2026

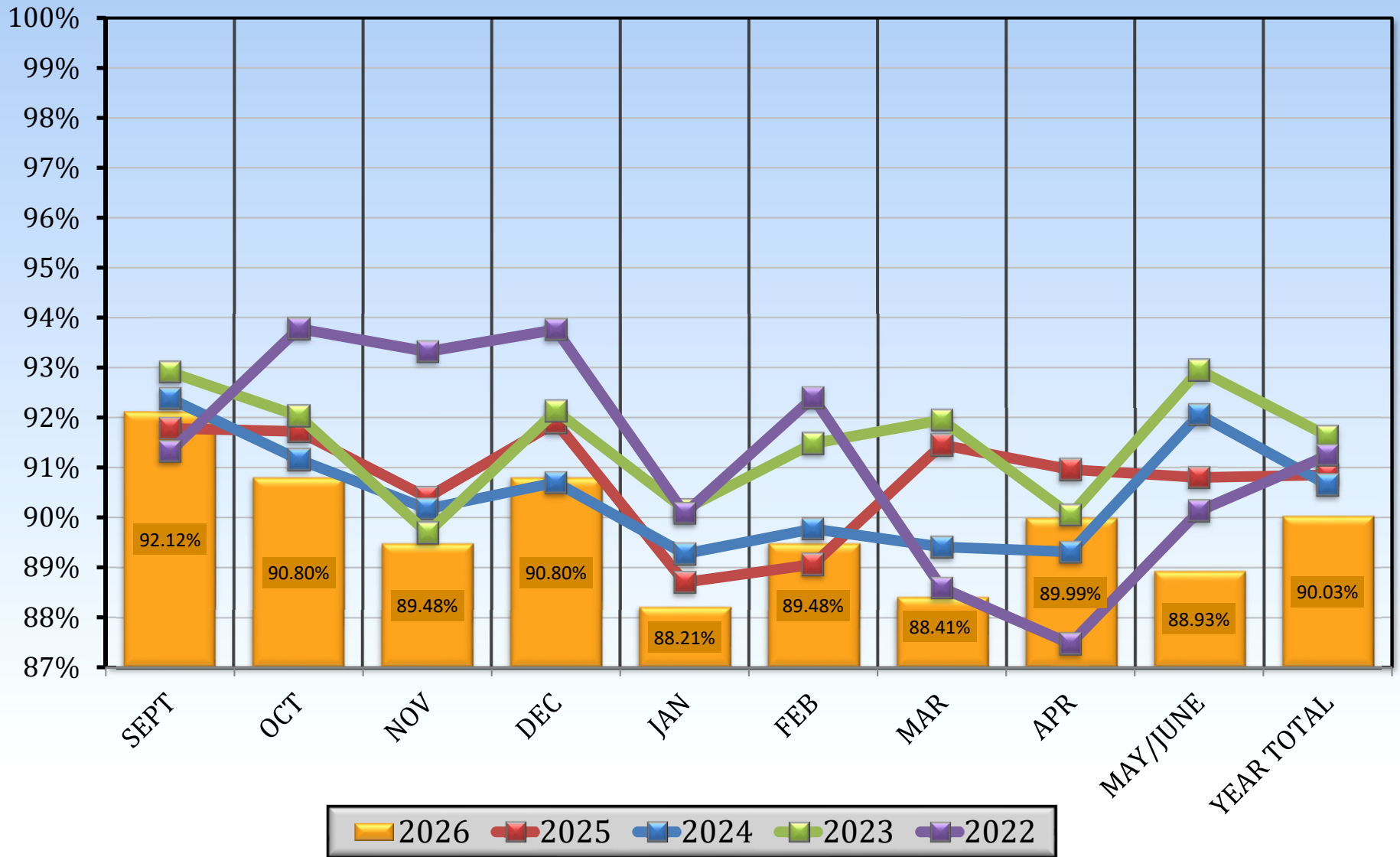
(Before the Re-Calc)



Students Monthly Attendance Rate

By Month and School Year

(Before the Re-Calc)

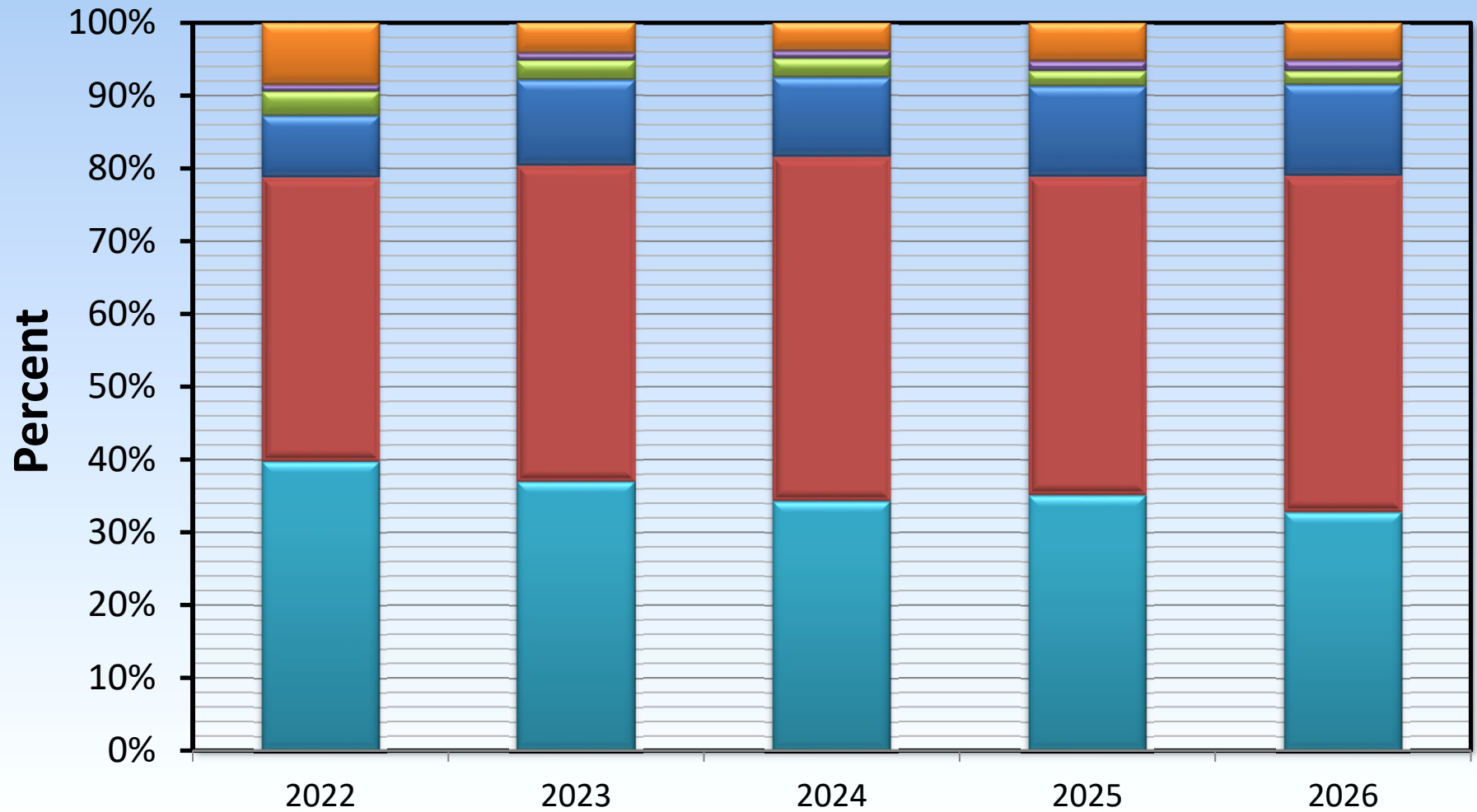


5 Year History

21/22	A.D.E.	2032.06	2034.89	2035.72	2032.31	2005.38	1999.95	2014.76	2009.94	2005.17
	A.D.A.	1855.61	1908.32	1899.81	1905.44	1806.38	1848.00	1784.88	1758.03	1807.31
ORG	%ADA	91.32%	93.78%	93.32%	93.76%	90.08%	92.40%	88.59%	87.47%	90.13%
	A.D.E.	2046.06	2051.63	2051.39	2048.13	2019.50	2019.26	2014.59	2008.94	2005.17
ADJ	A.D.A.	1850.59	1851.18	1839.92	1840.25	1740.97	1788.03	1783.21	1753.39	1807.31
	%ADA	90.45%	90.23%	89.69%	89.85%	86.21%	88.55%	88.51%	87.28%	90.13%
	DYENR	67520.0	38981.0	36925.0	32770.0	32312.0	38366.0	34248.0	36161.0	36093.0
	DYPRS	61069.5	35172.5	33118.5	29444.0	27855.5	33972.5	30314.5	31561.0	32531.5
	DYABS	6450.5	3808.5	3806.5	3326.0	4456.5	4393.5	3933.5	4600.0	3561.5
	#DAYS	33	19	18	16	16	19	17	18	18
	ADDS	36	8	1	3	10	8	3	1	1
	DROPS	82	3	5	6	17	13	7	5	3
22/23	A.D.E.	2071.35	2074.79	2071.12	2070.07	2040.53	2035.58	2033.88	2028.89	2025.05
	A.D.A.	1924.50	1909.42	1857.65	1907.17	1839.65	1862.11	1870.22	1827.11	1882.21
ORG	%ADA	92.91%	92.03%	89.69%	92.13%	90.16%	91.48%	91.95%	90.05%	92.95%
	A.D.E.	2069.41	2073.79	2070.24	2069.07	2039.76	2035.53	2033.88	2028.83	2025.05
ADJ	A.D.A.	1922.41	1907.55	1854.94	1906.33	1839.76	1862.71	1869.59	1823.78	1882.21
	%ADA	92.90%	91.98%	89.60%	92.13%	90.19%	91.51%	91.92%	89.89%	92.95%
	DYENR	70360.0	39402.0	35194.0	31036.0	34676.0	38675.0	32542.0	36519.0	38476.0
	DYPRS	65362.0	36243.5	31534.0	28595.0	31276.0	35391.5	29913.5	32828.0	35762.0
	DYABS	4998.0	3158.5	3660.0	2441.0	3400.0	3283.5	2628.5	3691.0	2714.0
	#DAYS	34	19	17	15	17	19	16	18	19
	ADDS	32	7	4	1	16	7	2	2	0
	DROPS	28	9	6	2	25	6	4	7	1
23/24	A.D.E.	2073.62	2075.50	2075.94	2075.20	2050.94	2051.65	2048.43	2043.90	2038.13
	A.D.A.	1915.53	1892.08	1871.89	1882.23	1830.84	1841.68	1831.57	1825.45	1876.38
ORG	%ADA	92.38%	91.16%	90.17%	90.70%	89.27%	89.77%	89.41%	89.31%	92.06%
	A.D.E.	2070.62	2073.50	2074.39	2074.20	2049.94	2049.95	2044.43	2041.90	2036.69
ADJ	A.D.A.	1905.47	1889.93	1869.72	1880.77	1829.06	1841.60	1828.57	1822.90	1874.94
	%ADA	92.02%	91.15%	90.13%	90.67%	89.23%	89.84%	89.44%	89.27%	92.06%
	DYENR	70401.0	41470.0	37339.0	31113.0	32799.0	40999.0	28622.0	42880.0	32587.0
	DYPRS	64786.0	37798.5	33655.0	28211.5	29265.0	36832.0	25600.0	38281.0	29999.0
	DYABS	5615.0	3671.5	3684.0	2901.5	3534.0	4167.0	3022.0	4599.0	2588.0
	#DAYS	34	20	18	15	16	20	14	21	16
	ADDS	25	2	14	1	19	5	2	5	1
	DROPS	49	5	7	5	13	7	5	7	11
24/25	A.D.E.	2034.67	2043.81	2041.75	2035.27	2017.00	2017.28	2006.68	2006.31	2006.00
	A.D.A.	1867.45	1874.57	1845.69	1870.50	1789.00	1796.56	1835.18	1824.91	1821.53
ORG	%ADA	91.78%	91.72%	90.40%	91.90%	88.70%	89.06%	91.45%	90.96%	90.80%
	A.D.E.	2034.67	2043.81	2041.69	2036.27	2017.00	2017.28	2006.68	2006.19	2006.00
ADJ	A.D.A.	1867.14	1874.67	1844.91	1871.57	1790.00	1796.28	1835.08	1825.31	1821.53
	%ADA	91.77%	91.72%	90.36%	91.91%	88.75%	89.04%	91.45%	90.98%	90.80%
	DYENR	67144.0	42920.0	32667.0	30544.0	36306.0	36311.0	38127.0	32099.0	36108.0
	DYPRS	61615.5	39368.0	29518.5	28073.5	32220.0	32333.0	34866.5	29205.0	32787.5
	DYABS	5528.5	3552.0	3148.5	2470.5	4086.0	3978.0	3260.5	2894.0	3320.5
	#DAYS	33	21	16	15	18	18	19	16	18
	ADDS	29	13	8	0	19	2	1	4	1
	DROPS	34	12	10	7	12	13	6	2	1
25/26	A.D.E.	1997.12	1997.76	1995.31	1996.80	1981.72	1974.06	1968.37	1965.83	1960.60
	A.D.A.	1839.71	1813.95	1785.47	1813.13	1748.06	1766.33	1740.26	1768.97	1743.50
ORG	%ADA	92.12%	90.80%	89.48%	90.80%	88.21%	89.48%	88.41%	89.99%	88.93%
	A.D.E.	1996.21	1998.19	1995.19	1995.93	1978.44	1974.06	1968.37	1965.83	1960.60
ADJ	A.D.A.	1837.40	1815.07	1789.47	1815.03	1749.06	1768.31	1743.18	1772.00	1743.50
	%ADA	92.04%	90.84%	89.69%	90.94%	88.41%	89.58%	88.56%	90.14%	88.93%
	DYENR	67871.0	41962.0	31923.0	29939.0	35612.0	35533.0	37399.0	35385.0	29409.0
	DYPRS	62471.5	38116.5	28631.5	27225.5	31483.0	31829.5	33120.5	31896.0	26152.5
	DYABS	5399.5	3845.5	3291.5	2713.5	4129.0	3703.5	4278.5	3489.0	3256.5
	#DAYS	34	21	16	15	18	18	19	18	15
	ADDS	25	4	8	1	9	2	3	6	0
	DROPS	35	7	2	2	9	7	8	10	3
10 YR HIST		93.65%	93.17%	92.19%	92.82%	91.27%	91.39%	91.52%	91.21%	92.22%
	DESC	AUG-SEPT	OCT	NOV	DEC	JAN	FEB	MAR	APR	MAY/JUNE

Attendance Codes by School Year

Percent of Codes by Year



Present Codes:

FLD TRIP

OFFC

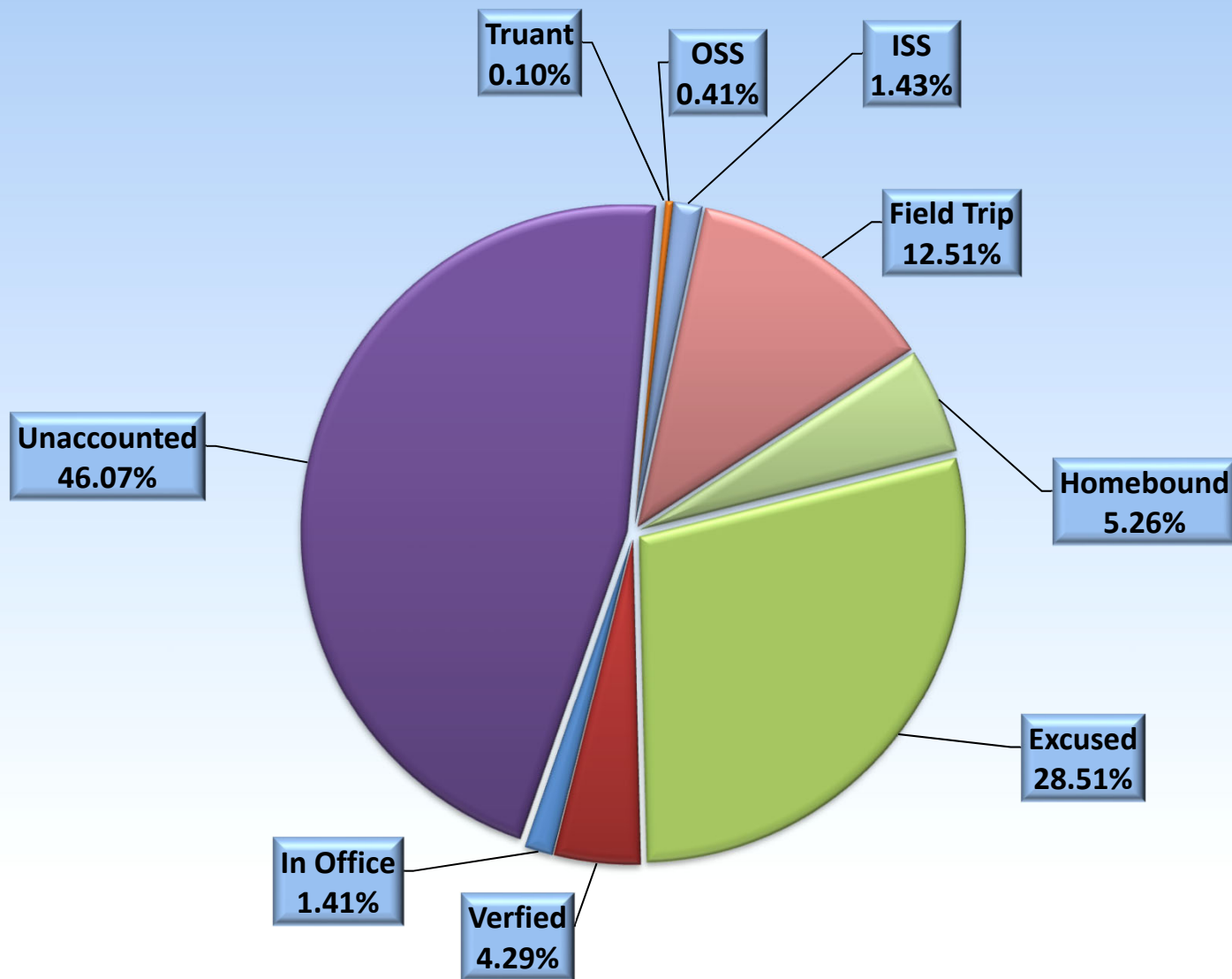
HMBD

SUSP (Combined - OSS is Absent, ISS is Present)



Attendance Codes by Type & School Year 2025/2026

Percent of All Codes



Present Codes:
ISS
Field Trip
Homebound
In Office

Attendance Rate for District 94

School Year 2025/2026

(Before the Re-Calc)

