

**Monday**

**Tuesday**

**Wednesday**

**Thursday**

**Friday**

**1**  
**Children Ages 1-18 FREE**  
**ADULTS \$4.85**



**5**  
**Lunch will be served**  
**in the High School**  
**Cafeteria from**  
**11:00am – 1:00pm**

**8**  
 Popcorn Chicken  
 WG Dinner Roll  
 Potato Variety  
 Variety of Vegetables  
 Variety of Fruit  
 Choice of Milk

**9**  
 Cheeseburger on  
 WG Bun w/ Lettuce & Tomato  
 Potato Variety  
 Variety of Vegetables  
 Variety of Fruit  
 Choice of Milk

**10**  
 Mexican Pizza  
 Tossed Salad  
 Variety of Vegetables  
 Variety of Fruit  
 Choice of Milk

**11**  
 WG Stuffed Mozz Sticks  
 w/ Pizza Sauce  
 Variety of Vegetables  
 Variety of Fruit  
 Choice of Milk

**12**  
**CLOSED**

**15**  
 Chicken or Beef Taco on WG Soft Shell  
 Mexican Rice  
 Variety of Vegetables  
 Variety of Fruit  
 Choice of Milk

**16**  
 Hot Dog on a WG Bun  
 Baked Beans  
 Variety of Vegetables  
 Variety of Fruit  
 Choice of Milk

**17**  
 Breaded Chicken Favorites  
 Dinner Roll  
 Potato Variety  
 Variety of Vegetables  
 Variety of Fruit  
 Choice of Milk

**18**  
 Penne Pasta w/ Meat sauce  
 WG Garlic Stick  
 Tossed Sald  
 Variety of Vegetables  
 Variety of Fruit  
 Choice of Milk

**19**  
**CLOSED**

**22**  
 Walking Taco w/Cheddar Cheese  
 WG Chips, Lettuce & Salsa  
 Refried Beans  
 Variety of Vegetables  
 Variety of Fruit  
 Choice of Milk

**23**  
 Mandarin Orange Chicken  
 over Egg Noodles  
 Egg Roll  
 Variety of Vegetables  
 Variety of Fruit  
 Choice of Milk

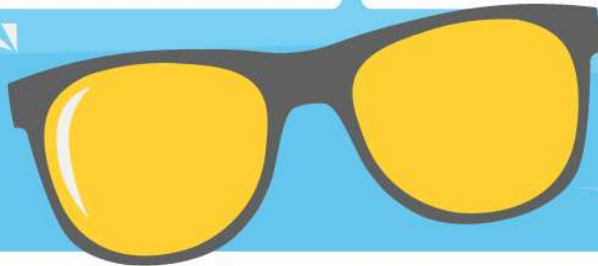
**24**  
 Breaded Pork Chopette  
 Whipped Potatoes w/Gravy  
 WG Dinner Roll  
 Variety of Vegetables  
 Variety of Fruit  
 Choice of Milk

**25**  
 Chicken Tenders  
 Potato Variety  
 WG Breadsticks  
 Variety of Vegetables  
 Variety of Fruit  
 Choice of Milk

**26**  
**CLOSED**

**29**  
 WG Cheese or Pepperoni Pizza  
 Tossed Salad  
 Variety of Vegetables  
 Variety of Fruit  
 Choice of Milk

**30**  
 Nacho Supreme w/  
 Taco Meat & WG Tortilla Chips  
 Cheddar Cheese, Lettuce, Salsa  
 Refried Beans  
 Variety of Vegetables  
 Variety of Fruit  
 Choice of Milk



**LOOKING FOR A LITTLE EXTRA CASH, FLEXIBLE HOURS? Various part-time Food Service Opportunities available this school year. Scan QR Code to complete application and apply for all clearances Act 34,151,114**



Leigh Anne Holman CDM, CFPP  
 Food Service Director  
 724-266-2833 ext. 2395  
[leighanne.holman@ambridge.k12.pa.us](mailto:leighanne.holman@ambridge.k12.pa.us)