



Google Classroom Parent Guide

Help Your Student Stay On Track!

What is Google Classroom?

A platform where teachers post:

- Assignments
- Materials
- Announcements

Students use it daily for their classes

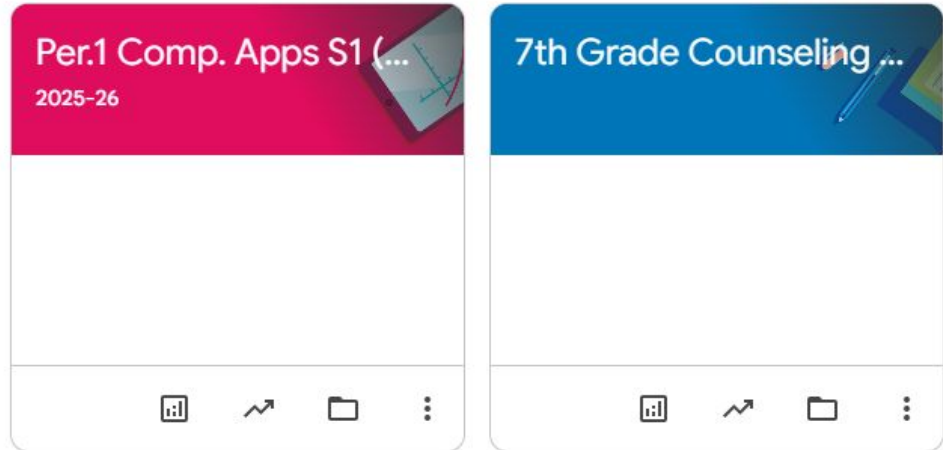
Think of it as a hub for classwork

How Students Access Google Classroom

Log in with school Google account

Click on class tiles to open each class

- Every class will have their own Google classroom where teachers post information and assignments



Where to Find Assignments

Click the **Classwork** tab

- Organized by topics (units, weeks, or lessons)
- Look for upcoming and past assignments

List of Assignments

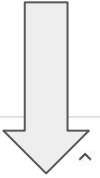


Classwork People Grades Analytics **New**

Assignments

	Presenting Project		Due Dec 5, 2025	
	Game of Life Assignment	Assignments	Due Nov 7, 2025	
	My Schools Assignment	Assignments	Due Oct 15, 2025	
	Career Assignment		Due Sep 18, 2025	
	Explore Me Assignment	Assignments	Due Sep 12, 2025	
	Vacation Evaluations		<i>Draft</i>	
	Learning Hub Assignment	Assignments	Due Oct 9, 2025	

Due Dates of Assignments are listed



Assignments

Click on Assignment to see additional information

- Directions, assignment, links, and additional information will be provided
- It will show if assignment has been submitted

The screenshot shows a mobile interface for an assignment titled "Game of Life Assignment". At the top, there is a header bar with the assignment title, the word "Assignments", and the due date "Due Nov 7, 2025". Below the header, the assignment was posted on "Nov 5, 2025". A progress bar shows 0 items turned in, 0 assigned, and 26 graded. The main content area contains instructions: "Read over the 'Game of Life Assignment' Google Doc for all the directions and requirements. Click on the attached link for the 'School Links' website to find the information you need for the project. Open the 'My Life' Google Sheets spreadsheet to create your work. Use the 'Positive & Negative Examples' to help guide you. There are 2 different Examples based on your Salary and Expenses." Below the text is a link to a rubric: "Rubric: 24 criteria • 25 pts". At the bottom, there are three buttons: "Log In - SchoolLinks" with the URL "https://app.schoollinks.com/login", "Game of Life Assignment" with a Google Docs icon, and "View instructions". A "Review work" button is located at the bottom right.

Game of Life Assignment Assignments Due Nov 7, 2025

Posted Nov 5, 2025

0 Turned in | 0 Assigned | 26 Graded

Read over the ["Game of Life Assignment"](#) Google Doc for all the directions and requirements. Click on the attached link for the ["School Links"](#) website to find the information you need for the project. Open the ["My Life"](#) Google Sheets spreadsheet to create your work. Use the ["Positive & Negative Examples"](#) to help guide you. There are 2 different Examples based on your Salary and Expenses.

[Rubric: 24 criteria • 25 pts](#)

[Log In - SchoolLinks](https://app.schoollinks.com/login)
https://app.schoollinks.com/login

[Game of Life Assignment](#)
Google Docs

[View instructions](#) [Review work](#)

Stream vs Classwork

Stream tab = Shows announcements and updates

Classwork tab = Where all assignments are listed

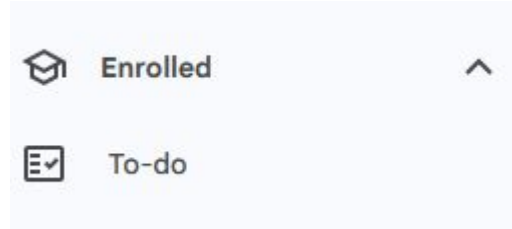
Encourage students to check **Classwork first** when looking for assignments

How to Check Missing Work

Click the **To-Do** section on the Google Classroom Sidebar

Look for:

- Missing = not turned in
- Late = turned in after due date



Students can click directly on missing work to open it

How to Open & Submit Work

Click on an assignment

- Select View Assignment
- Complete the work (Google Doc, Slides, etc.)
- Click **Turn In** when finished

Make sure attachments are included before turning in

Checking Teacher Feedback

Open returned assignments

Look for:

- Teacher comments
- Scores/points

Students can improve work if allowed and resubmit

Common Issues

1. Assignment marked missing but it is completed → student didn't click **Turn In**
2. Work submitted but not attached correctly
3. Student worked in a document but never turned it in
4. Encourage students to double-check submissions

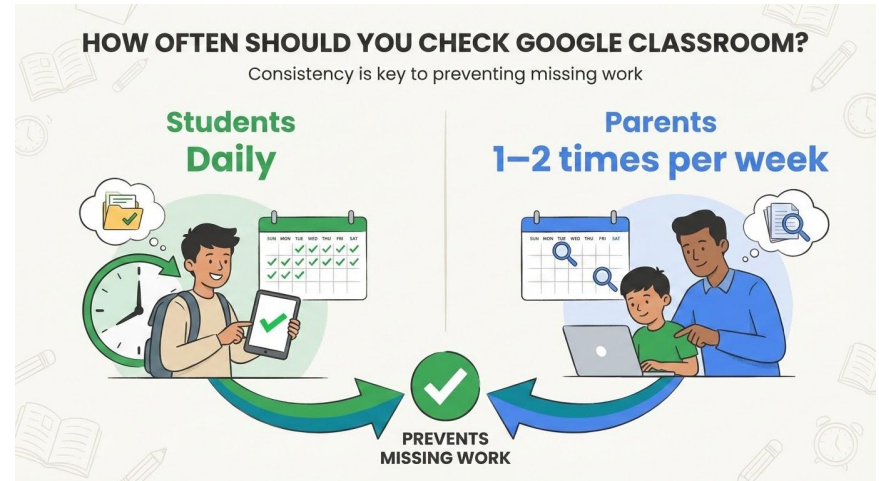
What Can Parents Do?

Ask students to open Google Classroom with you

Review:

- Missing assignments
- Upcoming work

Help them make a plan to complete work



Weekly Check Routine

1. Open Google Classroom
2. Review missing assignments
3. Check upcoming due dates
4. Make a plan to complete work
5. Follow up later in the week

Questions?

Thank you for taking the time to view this presentation. We know that middle school can be a big adjustment for both adults and students.

If you still have questions, please reach out! We are here to support you and your student.



Go Panthers!