

**RSU 63 Board of Directors  
Monday, October 27, 2025  
6:30pm  
Eddington Elementary School  
Agenda**

**Call Meeting to Order**

**Flag Salute/Moment of Silence**

**Executive Session – Discussion of staff and personnel issues pursuant to 1 MRSA § 405(6)(A)**

**Possible Action Regarding Executive Session**

**Approval of Minutes for September 22, 2025 Board Meeting**

**Recognition and/or Awards of Students, Staff, and Others**

**Acceptance of Gifts/Donations**

1. \$10,000 donation from Maine Military Supply for the Holbrook Playground
2. \$100 donation from Fitch Property Management for 20 dance tickets to the Holbrook Halloween Dance

**Presentation – None**

**Questions and Comments from the Public**

**Dates of Next Meetings**

1. **Advisory Committee on Efficiency (ACE):** October 27, 2025 at 5:30pm, Eddington Elementary School
2. **Curriculum Committee:** October 29, 2025 at 2:30pm, Holbrook Middle School
3. **Policy Committee Meeting:** November 4, 2025 at 4:00pm, Holbrook Middle School
4. **Budget and Finance Committee Meeting:** November 5, 2025 at 3:45pm, Holbrook Middle School
5. **Advisory Committee on Efficiency (ACE):** November 24, 2025 at 5:30pm, Holbrook Middle School
6. **Board Meeting:** November 24, 2025 at 6:30pm, Holbrook Middle School

**Budget and Finance**

**Superintendent’s Report**

**Acceptance of Committees’, Administrators’, Superintendent’s, and Board Chair’s Reports**

**Old Business**

1. Holbrook Entrance Reconfiguration Update
2. Holbrook Playground Update
3. Request for an additional \$2,500 for ACE Committee for the purpose of school blueprints

**New Business**

**Personnel Actions**

1. Resignations/Retirements
  - a. Keith Wheaton – Bus Driver
2. Elections
3. Appointments
  - a. Kayla Ouellette – Ed Tech II, RTI
  - b. Brenda Seavey – Assistant Cook
  - c. Gene Worster – Boys A & B Basketball Coach
  - d. Dennis Whitney – Girls B Basketball Coach
4. Reassignments
5. Searches
  - a. Bookkeeper
  - b. Cheering Coach
  - c. Girls A Basketball Coach

- d. Bus Driver
- e. Grade 7/8 Math/STEM/RTI Teacher
- f. Special Education Life Skills Teacher
- g. Administrative Assistant to the Superintendent
- h. Ed Tech III, Special Education Resource Room (Holbrook)
- i. Ed Tech II or III, Special Education Life Skills (Holden)
- j. Speech Language Pathologist (District)
- k. Spare Van Driver
- l. Spare Bus Drivers

**Executive Session – Discussion of contract negotiations pursuant to 1 MRSA §405(6)(D)**

**Possible Action Regarding Executive Session**

**Adjournment**

*In compliance with the Americans with Disabilities Act, if you require any kind of assistance to fully participate in this meeting, please notify the Superintendent's Office at 843-7851 or write to Superintendent of Schools, 202 Kidder Hill Road, Holden, ME 04429.*

RSU #63 Board Meeting  
Date: September 22, 2025  
Location: Holden Elementary School  
Minutes

**RSU 63 Board Member(s) Present:**

*Town of Holden:* Amy Hart, Heather Lander, Cherie Faulkner, and Scott Walton

*Town of Clifton:* Linda Graban

*Town of Eddington:* Heather Grass, Rachel Downs, and Brittany Wood (Arrived at 5:15pm)

Board Chair, Scott Walton called the meeting to order at 5:00pm followed by the flag salute and moment of silence.

**Executive Session:**

Motion by Linda Graban with a second by Rachel Downs to enter executive session for discussion of employment of officials/appointees/employees pursuant to 1 M.R.S.A. § 405(6)(A) at 5:02pm.

Discussion: None

**Roll Call Vote: Heather Grass: Yes; Brittany Wood: Absent; Cherie Faulkner: Yes; Rachel Downs: Yes; Scott Walton: Yes; Amy Hart: Yes; Heather Lander: Yes; Linda Graban: Yes**

**Vote: 7 Yes; 0 Opposed; 1 Absent; Motion Passed**

Public Session resumed at 6:47pm.

**Action Regarding Executive Session:** Motion by Rachel Downs with a second by Linda Graban to offer Sheila Caldwell the dual role of Interim Superintendent of Schools and Director of Curriculum and Instruction for the remainder of the 2025-2026 school year.

Discussion: None

**Roll Call Vote: Heather Grass: Yes; Brittany Wood: Yes; Cherie Faulkner: Yes; Rachel Downs: Yes; Scott Walton: Yes; Amy Hart: Yes; Heather Lander: Yes; Linda Graban: Yes**

**Vote: 8 Yes; 0 Opposed; Motion Passed**

**Approval of Minutes**

Motion by Linda Graban with a second by Amy Hart to approve the minutes for the August 25, 2025 Board Meeting with an amendment to add the business name for hydroseeding donation.

Discussion: None

**Vote: 8 Approved; 0 Opposed; Motion Passed**

**Recognition and/or Awards of Students, Staff, and Other:**

Rachel Downs commended the Holden Garden Club on the ribbons they received at the Blue Hill Fair over the summer. She also thanked Jenny-Lee Lagrange, Holbrook Cook for bringing back the salad bar. Scott Walton recognized the Bus Drivers for their efforts in keeping our students safe. Mr. Walton also thanked the Board members for their individual conversations and commitment to uphold the policies of the district.

**Acceptance of Gifts and Donations:** None

**Presentation:** None

**Questions and Comments from the Public:** Annessa Jones, Eddington resident spoke regarding the bag rule at the middle school.

**Dates of Next Committee Meetings:**

**Budget and Finance Committee, Policy Committee, and Curriculum Committee:** TBD

**Advisory Committee on Efficiency (ACE):** September 29, 2025 at 6:00pm Holbrook Middle School

**Board Meeting:** October 27, 2025 at 6:30pm, Eddington Elementary School

**Budget and Finance:** No update

RSU 63 Board Meeting Minutes

September 22, 2025

Page 1 of 2

**Superintendent's Report:** Nothing to add

**Acceptance of Reports:** Motion by Heather Lander with a second by Cherie Faulkner to approve the administrator and superintendent reports.

**Discussion:** None

**Vote: 8 Approved; 0 Opposed; *Motion Passed***

**Old Business:** None

**New Business:**

**Election of MSBA Delegate Assembly Representative and Alternate**

Motion by Linda Graban with a second by Cherie Faulkner to elect Rachel Downs as the MSBA Delegate Assembly Representative and Brittany Wood as the MSBA Alternate.

**Discussion:** None

**Vote: 8 Approved; 0 Opposed; *Motion Passed***

**Personnel Actions:**

**Resignations/Retirements:** Mary Bridgham, Special Education Life Skills Teacher at Holden and Elizabeth Connors, 7/8 Math Teacher at Holbrook

**Elections:** None

**Appointments:** Zachary Chenier, Transportation Coordinator/Bus Driver and Audra Whitney, Long Term Social Studies Substitute Teacher

**Reassignments:** Shelley Wyman, Administrative Assistant to the Superintendent to Bookkeeper/Human Resources

**Searches:** Special Education Life Skills Teacher (Holden), Administrative Assistant to the Superintendent, Long Term Substitute Math Teacher, Ed Tech III Special Education Resource Room, Assistant Cook, Speech Language Pathologist, Ed Tech II Title I/Elementary RTI, Spare Van Driver, and Spare Bus Drivers

Scott Walton thanked Superintendent James Stoneton on behalf of the Board, Staff, and Teachers for helping us through a difficult time.

**Adjournment:** At 7:05pm, a motion by Heather Grass with a second by Brittany Wood to adjourn the meeting.

**Discussion:** None

**Vote: 8 Approved; 0 Opposed**

Respectfully submitted by,

Sheila Caldwell  
RSU 63 Interim Superintendent of Schools

*Sheila Caldwell*  
Interim Superintendent/  
Director of Curriculum & Instruction

*Shelley Wyman*  
Administrative Assistant

**RSU 63**  
**Office of the Superintendent**  
**202 Kidder Hill Road**  
**Holden, ME 04429**  
**(207) 843 – 7851**  
**[www.rsu63.org](http://www.rsu63.org)**

*Jessica Knights*  
Business Manager

*Shelley Wyman*  
Bookkeeper/  
Human Resources

## **Superintendent October Board Report**

**To: Scott Walton, Rachel Downs, Linda Graban, Cherie Faulkner, Brittany Wood, Heather Lander, Heather Grass, Amy Hart**

**From: Interim Superintendent, Sheila Caldwell**

**Date: October 22, 2025**

This is my first official board meeting since being appointed Interim Superintendent. Each month I will submit a letter with an overview of the board meeting agenda and any necessary additional information on agenda items. Please feel comfortable to reach out with questions at any time.

I have enjoyed sitting down with each board member, as we've been able to schedule individual meetings. I have found it helpful to get to know one another and begin building those relationships. Among other things, the Superintendent's office is busy completing the October student and staff data collection for our EPS funding and filling the many ACE sub-committee requests, all of which has been an informative process.

Earlier this month, I joined Ryan Porter and Scott Holmes from MSMA for an insurance inspection walk through of all three schools. He will be returning to visit the bus garage and will be submitting a report of his findings.

Under old business is the Holbrook entryway project and the Gloria MacKenzie Foundation grant. The foundation has given us options: an extension on the December 2025 deadline; or permission to spend the funds on something other than the original project but related to ADA compliance/Safety and Security; or to apply for additional funds in the January 2026 application process, which would be approved and funds available between October and December 2026. I'd like to see us apply for additional funds through the foundation and aim to complete the project once we have all that we need.

The October board meeting will include two executive sessions. The first one is to discuss board member issues pursuant to 1 MRSA § 405(6)(A). This executive session will ensure that we maintain a productive discussion in a confidential environment to hear the views of all board members on this important issue.

The second executive session will be to discuss contract negotiations pursuant to 1 MRSA §405(6)(D) for the district's administrator contracts. The first meeting with administrators and board representation for these negotiations is October 30 at 5:30pm.

Thank you,

Sheila Caldwell  
Superintendent RSU63

# Holbrook School

202 Kidder Hill Road

Holden, ME 04429

Michele Archambault, Interim Teaching Principal [marchambault@rsu63.org](mailto:marchambault@rsu63.org)  
Sarah Estes, School Counselor [sestes@rsu63.org](mailto:sestes@rsu63.org)

# Office of the Principal

Tel: (207) 843-7769 Fax: (207) 843-4328

Mary Greenlaw, Administrative Assistant [mgreenlaw@rsu63.org](mailto:mgreenlaw@rsu63.org)  
Dawna Bickford, District Nurse [dbickford@rsu63.org](mailto:dbickford@rsu63.org)

## Holbrook Middle School October 2025

Dear RSU 63 Board Members,

It is with great pleasure that I submit this report on behalf of the students and staff of the Holbrook Middle School.

Trimester I progress reports went home Tuesday, October 14th. These are a snapshot of student grades at the midpoint of the trimester and are not reflected in their permanent record. Students will have adequate time to address academic concerns prior to the trimester I final marks calculated in November. The first session of after school academic support started Wednesday, October 1st. Each grade level team identified students who will benefit from extra support and encourage students and their families to access the late bus. Mrs. Hutchins, Miss Norris, Mrs. Estes, Ms. Blais will be working on these nights to provide extra support for our Holbrook students. Ms. Norris will be starting World culture club on Wednesday late bus nights soon. Mrs. Duran will be running the board games club along with Mr. Cabral who is running a music jam session for interested students.

Holbrook students are completing the Maine Through The Year (MTTY) state assessments in ELA and Math for the Fall of 2025. The data from these tests and I Ready assessments will be used to determine students who will work with Mrs. Shepherd on specific skills that need support. She will be working with students one on one and in small groups. This is part of our ongoing Multi-Tiered System of Supports (MTSS) in academic and behavioral expectations.

Mrs. Greenlaw is happy to see students in the office with KUDOS cards recognizing their positive behaviors at school. In addition to the KUDOS card system Mrs. Hutchins and Miss. Greenlaw are collecting monthly nominations for "Student of the Month." One student from each grade level is selected by the staff monthly to earn the honor. The student's names will be put in for a drawing at the end of the trimester for the chance to win a gift card.

Holbrook will have picture retakes on Monday, October 27th. Any student or staff member who didn't get their picture taken in September will have the opportunity to do so by the Lifetime photography company. All students and staff have their pictures taken for picture badges, staff directory, and yearbook purposes.

The Holbrook School has had four fire drills this school year. It is important that we practice in the case that there is a real emergency and we need to get students and staff out of the building. It is a state requirement that we have ten drills a year. The students and staff always do a very efficient job of exiting the building, being accounted for, and entering the building again when given the all clear.

On Monday, October 6th the new Holbrook playground was dedicated to the late Chief Chris Greeley. There were several media stations present along with Mrs. Greeley who spoke on behalf of the dedication. All of the Holbrook students and staff attended the playground dedication in his honor. The playground which has an official sign, "The Chris Greeley Champions of Kindness Playground" will be a reminder of how important kindness is as well as positive interactions with others can make a big difference. Thank you to all who helped bring this new playground to fruition. (The 25 Days of Kindness, Maine Military Supply, Lander Group, Northeast Paving, Al Benner Homes, Varney Buick GMC, Sargent Corporation, Owen J. Folsom, Inc., Gardner Construction Enterprises, P.A. Lyford, Inc., Airline Construction, D.H. Grass, Deabay Physical Therapy and Golf Performance, and Heather Lander)

As part of our ongoing efforts to prioritize the safety and well-being of our students, we hosted a special NetSmartz: Online safety presentation on Wednesday, October 8th. This presentation was tailored specifically to middle school

students and the ever-expanding digital landscape. It is crucial for our students to be well informed about online safety practices. The students learned about cyberbullying prevention, internet privacy, social media literacy, smart online practices and digital citizenship. NetSmartz is a nationally renowned program that focuses on empowering students with the knowledge and skills needed to navigate the online world safely. We would like to thank Sargent Lander, Detective Corporal Smith, and Doc (Digital Organized Crime-Dog) from the Maine State Computer Crimes unit for joining us here at Holbrook to share their knowledge. Chief Eddie Benjamin, Lt. Chad Foley, and Sargent Phil Boyd from the Holden Police Department also joined us for this very informative presentation.

On Friday, October 24th there will be a 5th-8th grade Halloween dance at Holbrook from 6:00-8:00. This dance is sponsored by our fantastic PTG and proceeds will benefit the 8th grade end of year activities. It is always a great time and fun to see the students, faculty, and parents dressed up!

Fall 2025 sports are winding down in the next two weeks. The Holbrook boys soccer team will be in the playoffs on Wednesday, October 15th at Caravel with a 3:00 game start. The Holbrook girls soccer team will be in the playoffs as well on Wednesday, October 15th at Glenburn with a 3:00 game start. The Holbrook Cross Country team has a meet also on Wednesday, October 15th at Bangor Christian. The soccer teams will be working to get into the semi finals later this week on Thursday, October 16th and hopefully the finals next week. The cross country team has the end of the year league championship meet next week in Orrington. Fall sports have been very busy!

Fall 25/Winter 26 basketball and chess sign ups started a few weeks ago. It is looking like tryouts will be the last week in October with games starting in November and ending in February.

Thank you for your continued support here at the Holbrook Middle School.

Respectfully Submitted,  
Michele Archambault  
Holbrook Interim Teaching Principal

Current Enrollment: 170

Grade 5 42

Grade 6 48

Grade 7 43

Grade 8 37



440 Main Road | Eddington, ME 04428 | P: 207-843-6010 | F: 207-843-4317

Stephanie McLean, *principal* smclean@rsu63.org  
Kelly Smith, *secretary* kjsmith@rsu63.org  
Dodie Smith, *social worker* dsmith@rsu63.org  
Dawna Bickford, *school nurse* dbickford@rsu63.org

590 Main Road | Holden, ME 04429 | P: 207-843-7828 | F: 207-843-4329

Stephanie McLean, *principal* smclean@rsu63.org  
Heather Kiley, *secretary* hkiley@rsu63.org  
Dodie Smith, *social worker* dsmith@rsu63.org  
Dawna Bickford, *school nurse* dbickford@rsu63.org

## Enrollment

### Eddington

PreK: 32

K: 36

1st: 29

**Total: 97**

### Holden

2nd: 55

3rd: 46

4th: 51

**Total: 152**

Dear Members of the School Board,

It has been a busy and exciting month at Holden and Eddington Schools! The year is off to a wonderful start, and things are now in full swing with lots of great learning and activities taking place.

All of our NWEA and MTTY testing has been completed, and we are so proud of the hard work and effort our students put forth. They did a fantastic job, and we couldn't be prouder of their accomplishments.

Fire Prevention Week took place from October 6–9. Both Holden and Eddington Schools participated, with the local fire departments visiting classrooms. Some of our older students even had the opportunity to visit the fire station. All students were able to see the fire truck up close and learn about the important work that firefighters do. A big thank-you to our local fire departments for planning such special and educational days for our students!

We are fortunate to have such a generous and supportive community. The Brewer Area Food Pantry donated pre-sharpened pencils, composition notebooks, and rulers from Target. We are very appreciative of their continued support for our students and schools.



EDDINGTON ELEMENTARY SCHOOL

HOLDEN ELEMENTARY SCHOOL

440 Main Road | Eddington, ME 04428 | P: 207-843-6010 | F: 207-843-4317

590 Main Road | Holden, ME 04429 | P: 207-843-7828 | F: 207-843-4329

Stephanie McLean, *principal* smclean@rsu63.org  
Kelly Smith, *secretary* kjsmith@rsu63.org  
Dodie Smith, *social worker* dsmith@rsu63.org  
Dawna Bickford, *school nurse* dbickford@rsu63.org

Stephanie McLean, *principal* smclean@rsu63.org  
Heather Kiley, *secretary* hkiley@rsu63.org  
Dodie Smith, *social worker* dsmith@rsu63.org  
Dawna Bickford, *school nurse* dbickford@rsu63.org

Second grade students recently enjoyed a field trip to the Fields Pond Audubon Center, where students learned about bees and pollination. The Audubon Center graciously provided this experience free of charge. It was a beautiful day filled with hands-on learning and outdoor fun.

Students in grades 2–4 are looking forward to going trick-or-treating at the police department and fire station on the afternoon of October 22. Both students and staff are excited to dress up and celebrate together!

In honor of the 25 Days of Kindness, the Holden Police Department is sending Holden School students to Treworgy Family Orchard on October 22. This wonderful opportunity will allow our students to enjoy the beauty of fall in Maine—picking apples and pumpkins, drinking cider, eating fresh donuts, and even feeding the goats.

We are so grateful for the many community partnerships and experiences that continue to make learning engaging and memorable for our students.

Sincerely,

Stephanie McLean

Principal



**Regional School Unit 63**  
**Office of Special Services**  
 Clifton, Eddington, and Holden

*RSU 63 is a community of learners dedicated to providing a safe, supportive, and challenging academic environment. Our students are respectful citizens and responsible stewards of our world. They are well prepared for high school with skills and a work ethic that enables them to succeed.*

**Director of Special Services Report October 2025**

For the 2025-2026 school year, the Special Education Department is currently serving 218 students, broken down as follows:

|   |     |
|---|-----|
| <b>Individualized Education Plans (IEPS):</b> | 127 |
| <b>504s:</b>                                  | 85  |
| <b>Currently in Referral Process:</b>         | 6   |
| <b>Total Number of Students:</b>              | 218 |

| <b>School/Level</b>  | <b>IEPs</b> | <b>504s</b> |
|----------------------|-------------|-------------|
| <b>High Schools:</b> | 32          | 51          |
| <b>Holbrook:</b>     | 37          | 17          |
| <b>Holden:</b>       | 42          | 14          |
| <b>Eddington:</b>    | 16          | 3           |

On Friday, October 10th, our paraprofessionals and special education teachers participated in a full-day professional development focused on De-Escalation, Self-Regulation, and Collaboration. The morning session, “*Regulation Begins with Us,*” centered on how adult calm supports student regulation. Staff engaged in meaningful discussions, practiced de-escalation strategies, and reflected on how their presence directly impacts classroom environments.

The afternoon session, “*Building Bridges: Working Together for Student Success,*” shifted the focus to collaboration between teachers and paraprofessionals. Staff participated in structured “Beyond the Basics” partner interviews, team reflection activities, and (as you may have heard)



**Regional School Unit 63**  
**Office of Special Services**  
Clifton, Eddington, and Holden

*RSU 63 is a community of learners dedicated to providing a safe, supportive, and challenging academic environment. Our students are respectful citizens and responsible stewards of our world. They are well prepared for high school with skills and a work ethic that enables them to succeed.*

---

the legendary Taco Cat Goat Cheese Pizza teamwork game - a perfect blend of laughter, connection, and camaraderie. The day ended with strong feedback from staff who appreciated the relevance, balance, and positive energy of the training.

### **Program and Staffing Updates**

- **Child Development Services (CDS):** The district continues to partner closely with CDS to ensure a smooth transition process for incoming students and to address service coordination needs.
- **Staffing:** We continue to recruit for two special education Ed Tech positions and are currently advertising for a Life Skills Classroom teacher at Holden Elementary.
- **CAP Requirements:** I am actively working to meet the Department of Education's Corrective Action Plan (CAP) requirements and have been in regular contact with the DOE to ensure compliance and continued progress.

I am deeply appreciative of the staff's dedication, adaptability, and commitment to continuous improvement. This PD day reinforced that when we stay calm, work collaboratively, and support one another, our students benefit most.

Respectfully Submitted,  
Krista Vining-Means  
Director of Special Services



George Cummings  
Technology Coordinator  
p: 207.843.4316  
e: gcummings@rsu63.org  
www.rsu63.org

**To:** RSU 63 Board of Directors  
**From:** George Cummings  
**Date:** October 15, 2025  
**Re:** Monthly Report

---

I submit this report to the School Board of Directors for October 2025.

### **Laptop take home for students in grades 6-8**

The laptop take-home program for students in grades 6–8 will begin on Monday, November 3rd. Participation is available to students and parents who choose to opt in and agree to the terms outlined in Policy IJNDB – District-Issued Computing Device Usage at Home.

The maintenance coverage fee for the 2025–2026 school year will remain at \$25.00. Funds collected through this fee are pooled to cover the cost of accidental damage to district-issued laptops, chargers, and protective cases.

### **Infinite Campus Parent and Student Portal**

The Infinite Campus Parent and Student Portal is now active for the 2025–2026 school year. The portal provides parents, guardians, and students with two convenient ways to access student information—either through a web browser or the Infinite Campus mobile app.

The portal offers real-time access to a wide range of student information, including:

- Attendance and absence data
- Assignments
- Student schedules
- Assessment data
- Gradebook and report card grades

Login credentials were distributed on September 4th to students new to Holbrook School and to all grade 5 students. On September 8th, new grade 5 parents and parents who had not previously accessed the Infinite Campus portal received their login credentials via email.

To date, 73% of Holbrook parents have activated their Infinite Campus portal accounts. I anticipate this percentage will continue to rise as we move closer to the end of the first trimester, reflecting ongoing engagement and participation in monitoring student progress.

### **Phone System Upgrade**

The district's phone system upgrade has been successfully completed, transitioning all schools and offices to a modern Voice over Internet Protocol (VoIP) platform utilizing SIP trunks for improved connectivity and scalability.

The new system improves reliability, call quality, and overall communication efficiency across the district. This upgrade replaces outdated analog equipment and provides advanced features such as enhanced call routing and seamless



George Cummings  
Technology Coordinator  
p: 207.843.4316  
e: gcummings@rsu63.org  
www.rsu63.org

integration with our existing technology infrastructure. School secretaries, teachers, and other staff have been trained on the new system, and initial feedback has been positive. This project represents a significant step forward in modernizing district operations and strengthening communication for staff across all buildings.

Respectfully submitted,

A handwritten signature in black ink, which appears to be 'George Cummings', is located below the text 'Respectfully submitted,'.

October 2025 Board Report  
Ryan Porter – Facilities/Maintenance Manager

**Holbrook:**

Working on the new proposed layout of the “new” Holbrook entrance with Carpenter Associates. Getting estimates for the room configuration and the groundwork that needs to be completed.

Staff bathroom toilet had plumbing in a couple of spots that were leaking water. Nichols Plumbing had to do a hard water shutdown because there were no external water shut-offs. They were installed and working as they should.

One of the fire doors in wing #210 was not closing properly. Upon further inspection, the door was rubbing heavily on the top of the door frame not allowing it to close. Also, where the door closer was mounted, it started to separate the paneling on the door from the door frame. I noticed the framing of the door had started to separate due to the constant pressure of the door closer which was only mounted to the paneling. The custodian and I removed the door so I could work on it. I had to use multiple clamps with a strong adhesive to straighten the frame so it was level and even again. I left it over the weekend to harden and reinstalled the door. I also bolted the door closing hardware so it went through the door so it is more secure and no stress on the paneling like before. Everything held together great and is working as it should.

I finished installing the gas/smoke/cO2 detectors that the fire department recommended we install.

We have a sink drain leak in the kitchen from the 3 bay sink that is coming from under the concrete slab and the block wall. Water is coming up behind where the grease is located and running along the bottom of the cupboards and the floor. I called Nichols Plumbing and they are scheduled to come look at it on October 20<sup>th</sup> unless they have a cancelation then it will be sooner.

The custodian and I removed the swing set since it was deemed not safe. Eric brought in his tractor which has a backhoe attachment on it to dig and expose the concrete footings on the swings, which saved a great deal of time. I cut the swings into sections for removal. I then wrapped a chain around the poles and to my truck to extract the poles and concrete footings. Once they were out, I cut the poles from the concrete and moved them down by the garage to be scrapped. We used the tractors to bury the holes and grade off the area.

I was mowing the lawn one last time for the season and unfortunately ran over a rock which was hidden and it went through a window in room #105. It narrowly missed staff which was in that room on Professional Day. Thankfully, no one was hurt. I called Sunrise Glass and they will be out to measure the window and get it ordered.

### **Eddington:**

We unfortunately could not save the expansion tank in the boiler room. It was tested by Mechanical Services and the bladder inside would not hold air along with the base being rotted enough that it could potentially fall over. An unexpected and not budgeted \$5,700 tank was installed.

I finished installing the gas/smoke/c02 detectors that the fire department recommended we install.

The kitchen fridge gaskets were old, cracked and not sealing correctly. I ordered new fridge door gaskets and installed.

The Pre-K teacher had bought a gazebo over the summer in hopes to have it installed in their recess area for shade. I met with the Eddington town code enforcement officer to see if we were able to install the fixture. After her and I looked at it on the box, we discussed and she found it to be not in compliance and not safe.

### **Holden:**

In bathroom #38, I had a toilet that needed to be replaced. I removed the old toilet and installed a new toilet gasket. After putting together the new toilet, I installed it and turned the water on. The new toilet was leaking between the toilet tank and the bowl. I disassembled it and put it back together and still a slight leak. I did this 2 more times before bringing it back to the store and getting a new one. Bought another one, put it together, installed and this one did the same thing, same place. Tried tightening the tank a little more in hopes no to break it, but it broke. So, I returned the toilet back to the store after talking to the manager. They were not going to let me exchange it because it was "installed" and deemed hazardous material. After some words and explaining that I just returned one yesterday for doing the same thing, he let me return it. I bought toilet #3, I went with a different model this time. Finally, after what should have been a couple hour process turned into 1 ½ days, the toilet was installed. No leaks and working as it should.

I removed the shrubs out front by the flagpole as they were in the way of the fire door and escape route. They got too big and if we were to trim them back, they literally would have been cut in half exposing nothing but the insides.

Installed a new AC in room #39. The one that was in there did not blow cool air. A student in that room is required to have one.

I finished installing the gas/smoke/c02 detectors that the fire department recommended we install.

In the boiler room, zone pump #1 was not working and no heat in a wing of the school. Mechanical Services had to remove and replace the none working pump with a new one. \$2,500 pump that was not budgeted for.



**RSU 63 Department of Transportation**  
 202 Kidder Hill Road • Holden, ME 04429  
 (207) 561-9238

Zachary Chenier, Transportation Director • Zchenier@rsu63.org



# RSU 63 School Board Transportation Report

Prepared by: Zachary Chenier, Transportation Director

Date: October 2025

## Overview

The RSU 63 Transportation Department continues to focus on student safety, reliability, and efficiency in daily operations. Routes have been running smoothly with minimal disruptions, and communication between schools, drivers, and families remains strong. We have made progress in refining route timing, ensuring that all buses arrive within the designated window. Mr. Chenier has also assumed direct driving responsibilities for Bus A, stabilizing morning and afternoon runs, reducing delays, and improving consistency for families.

## Operational Highlights

- **Bus Handbook Revision:** The team has begun reviewing and standardizing procedures for student discipline and operational protocols.
- **Special Education Transportation:** Ensuring compliance with Maine law regarding suspension procedures and specialized transport provisions.
- **Maintenance & Safety:** State inspections done for the month of October. Bus 7 recall sending to dealer. Waiting on insurance money to fix Bus 5
- **Training & Staff Development:** Planning refresher training for staff on student management and special education procedures.
- **Insurance Inspection:** The Bus Barn inspection is being scheduled with MSMA.
- **ACE Committie:** I have compiling data for the ACE Committee to provide a comprehensive overview of operations for the 2024–2025 school year. This includes detailed information on route times, student counts, and overall operational performance.

## Fuel Usage Summary — September 2025

## Upcoming Priorities

| Fuel Type | Gallons Used | Total Cost (\$) |
|-----------|--------------|-----------------|
| Gasoline  | 565.2        | \$1,660.98      |
| Diesel    | 544.8        | \$1,997.08      |
| Totals    | 1110.0       | \$3,658.06      |

- Finalizing updates to the Bus Student Handbook and discipline procedures.
- Continuing collaboration with Special Education staff to ensure all students have a safe ride to and from school.
- Preparing fleet for winter readiness.
- Scheduling Bus evacuation with each school.

## Closing Remarks

The transportation department remains strong, organized, and focused on safety and consistency. The teamwork among drivers, mechanics, and administration continues to make a positive impact on our students' daily experience.

Respectfully submitted,

**Zachary Chenier**

Transportation Director, RSU 63



## Regional School Unit 63

Clifton, Eddington, and Holden

*RSU 63 is a community of learners dedicated to providing a safe, supportive, and challenging academic environment. Our students are respectful citizens and responsible stewards of our world. They are well prepared for high school with skills and a work ethic that enables them to succeed.*

---

Sheila Caldwell  
Superintendent of Schools

Jessica Knights  
Business Manager

Date: October 15, 2025  
From: Jessica Knights  
RE: October Board Report

---

- The Central Office has been very busy this month, and we are still advertising our Administrative Assistant position. Despite this vacancy, we continue to keep the office operating efficiently.
- We have been working with the ACE committee to provide requested information regarding Transportation expenditures.
- We are continuing Audit preparation and the on site work is scheduled to begin in November.

### Nutrition

- We have hired a new full time Assistant Cook. She will be splitting her time between Holden and Holbrook. Everyone is looking forward to having her as part of the team.
- All economic status applications received have been processed and reported accordingly.
- There was an issue with the plumbing in the Holbrook Kitchen, which was resolved quickly. The cost of this initial repair is unknown at this time, but there should be minimal impact to the FY26 budget. I will continue to monitor the budget if future repairs are needed.

### REPORTS

- Reports completed this month in the business office; MePERS, EFS07, Federal reimbursement invoicing, Monthly School Nutrition Claims, Quarterly Reports.

# MSAD63

## FY25 Financial Statement

| Account Number / Description  | Adopted Budget<br>7/1/2025 -<br>6/30/2026 | Current Period<br>9/1/2025 -<br>9/30/2025 | Reported Period<br>7/1/2025 -<br>6/30/2026 | Bal Remg                 | Percent<br>Remaining<br>7/1/2025 -<br>6/30/2026 | Encumbrances<br>7/1/2025 -<br>6/30/2026 |
|---|---|---|--|--------------------------|---|---|
| <b>Local Revenue</b>  |   |   |  |                          |   |   |
| 1. 1000-0000-00000-4142100-230 Transportation for other Units-Bgr   | (3,500.00)                                | 0.00                                      | 0.00                                       | (3,500.00)               | 100.00%   | 0.00                                    |
| 2. 1000-0000-10000-4111100-910 REQUIRED LOCAL TAXES - CLIFTON       | (623,115.00)                              | 0.00                                      | (50,725.75)                                | (572,389.25)             | 91.85%  | 0.00                                    |
| 3. 1000-0000-10000-4111100-920 REQUIRED LOCAL TAXES - EDDINGTON     | (1,409,811.67)                            | 0.00                                      | (114,149.03)                               | (1,295,662.64)           | 91.90%  | 0.00                                    |
| 4. 1000-0000-10000-4111100-930 REQUIRED LOCAL TAXES -HOLDEN         | (2,304,885.00)                            | 0.00                                      | (192,073.75)                               | (2,112,811.25)           | 91.66%  | 0.00                                    |
| 5. 1000-0000-10000-4111300-910 ADDITIONAL LOCAL TAXES - CLIFTON     | (342,718.37)                              | 0.00                                      | (30,207.12)                                | (312,511.25)             | 91.18%  | 0.00                                    |
| 6. 1000-0000-10000-4111300-920 ADDITIONAL LOCAL TAXES - EDDINGTON   | (775,407.97)                              | 0.00                                      | (67,584.94)                                | (707,823.03)             | 91.28%  | 0.00                                    |
| 7. 1000-0000-10000-4111300-930 ADDITIONAL LOCAL TAXES - HOLDEN      | (1,267,705.64)                            | 0.00                                      | (105,642.14)                               | (1,162,063.50)           | 91.66%  | 0.00                                    |
| 8. 1000-0000-10000-4151000-900 INTEREST INCOME                      | (22,500.00)                               | 0.00                                      | 0.00                                       | (22,500.00)              | 100.00%   | 0.00                                    |
| 9. 1000-0000-10000-4199000-900 MISCELLANEOUS REVENUES               | (25,000.00)                               | 0.00                                      | 0.00                                       | (25,000.00)              | 100.00%   | 0.00                                    |
| 10. 1000-0000-10000-4199020-900 INSURANCE TRUST DIVIDENDS           | (6,000.00)                                | 0.00                                      | 0.00                                       | (6,000.00)               | 100.00%   | 0.00                                    |
| 11. 1000-0000-10000-4329700-900 State-Misc Receipts                 | (20,000.00)                               | 0.00                                      | 0.00                                       | (20,000.00)              | 100.00%   | 0.00                                    |
| 12. 1000-0000-10000-4500001-900 UNDESIGNATED SURPLUS                | (985,000.00)                              | 0.00                                      | 0.00                                       | (985,000.00)             | 100.00%   | 0.00                                    |
| <b>Subtotal Local Revenue</b>                                       | <b>\$(7,785,643.65)</b>                   | <b>\$0.00</b>                             | <b>\$(560,382.73)</b>                      | <b>\$(7,225,260.92)</b>  | <b>92.80%</b>                                   | <b>\$0.00</b>                           |
| <b>State Revenues</b>   |   |   |  |                          |   |   |
| 13. 1000-0000-10000-4311100-900 STATE FOUNDATION ALLOCATION         | (4,882,959.14)                            | 0.00                                      | (406,913.13)                               | (4,476,046.01)           | 91.66%  | 0.00                                    |
| 14. 1000-0000-20000-4312100-900 STATE AGENCY CLIENT TUITION         | (25,660.00)                               | 0.00                                      | 0.00                                       | (25,660.00)              | 100.00%   | 0.00                                    |
| <b>Subtotal State Revenues</b>                                      | <b>\$(4,908,619.14)</b>                   | <b>\$0.00</b>                             | <b>\$(406,913.13)</b>                      | <b>\$(4,501,706.01)</b>  | <b>91.71%</b>                                   | <b>\$0.00</b>                           |
| <b>Total Revenues</b>   | <b>\$(12,694,262.79)</b>                  | <b>\$0.00</b>                             | <b>\$(967,295.86)</b>                      | <b>\$(11,726,966.93)</b> | <b>92.38%</b>                                   | <b>\$0.00</b>                           |
| <b>System Administration</b>  |   |   |  |                          |   |   |
| 15. 1000-0000-23100-5150000-900 BOD - STIPENDS                      | 1,237.50                                  | 0.00                                      | 0.00                                       | 1,237.50                 | 100.00%   | 0.00                                    |
| 16. 1000-0000-23100-5250020-900 FICA/MEDI                           | 101.00                                    | 0.00                                      | 0.00                                       | 101.00                   | 100.00%   | 0.00                                    |
| 17. 1000-0000-23100-5345000-900 BOD - LEGAL FEES                    | 8,500.00                                  | 8,392.26                                  | 8,392.26                                   | 107.74                   | 1.26%   | 0.00                                    |
| 18. 1000-0000-23100-5346000-900 BOD - AUDIT                         | 15,500.00                                 | 0.00                                      | 11,625.00                                  | 3,875.00                 | (50.00)%  | 11,625.00                               |
| 19. 1000-0000-23100-5520000-900 BOD - DISTRICT BOND INSURANCE       | 14,665.00                                 | 0.00                                      | 15,089.00                                  | (424.00)                 | (2.89)%   | 0.00                                    |
| 20. 1000-0000-23100-5520010-900 BOD - PURCH.SERV. OTHER - LIAB. INS | 375.00                                    | 0.00                                      | 0.00                                       | 375.00                   | 100.00%   | 0.00                                    |
| 21. 1000-0000-23100-5550000-900 BOD - PRINTING & OTHER              | 4,250.00                                  | 0.00                                      | 585.00                                     | 3,665.00                 | 86.23%  | 0.00                                    |
| 22. 1000-0000-23100-5810000-900 BOD - MEMBERSHIP IN MSBA            | 4,081.00                                  | 0.00                                      | 4,080.53                                   | 0.47                     | 0.01%   | 0.00                                    |

# MSAD63

## FY25 Financial Statement

| Account Number / Description   | Adopted Budget       | Current Period       | Reported Period      | Bal Remg   | Percent Remaining    | Encumbrances         |
|--|----------------------|----------------------|----------------------|------------|----------------------|----------------------|
|  | 7/1/2025 - 6/30/2026 | 9/1/2025 - 9/30/2025 | 7/1/2025 - 6/30/2026 |            | 7/1/2025 - 6/30/2026 | 7/1/2025 - 6/30/2026 |
| 23. 1000-0000-23100-5814000-900 BOD - CONFERENCES                    | 2,460.00             | 0.00                 | 0.00                 | 2,460.00   | 100.00%              | 0.00                 |
| 24. 1000-0000-23140-5310000-900 BOD - REFERENDUM COSTS               | 1,350.00             | 0.00                 | 0.00                 | 1,350.00   | 100.00%              | 0.00                 |
| 25. 1000-0000-23200-5104000-900 SUPT. OFFICE (SUPT) - SALARY         | 151,178.00           | 0.00                 | 5,000.00             | 146,178.00 | 96.69%               | 0.00                 |
| 26. 1000-0000-23200-5118000-900 Admin Asst Salary                    | 50,204.00            | 4,129.10             | 18,461.52            | 31,742.48  | 63.22%               | 0.00                 |
| 27. 1000-0000-23200-5204000-900 SUPT. OFFICE (SUPT) - BENEFITS       | 950.00               | 0.00                 | 110.00               | 840.00     | 73.68%               | 140.00               |
| 28. 1000-0000-23200-5204010-900 SUPT. OFFICE (SUPT) - HEALTH         | 36,616.00            | 0.00                 | 1,019.17             | 35,596.83  | 97.21%               | 0.00                 |
| 29. 1000-0000-23200-5204020-900 SUPT. OFFICE (SUPT) - MCR            | 2,192.00             | 0.00                 | 70.35                | 2,121.65   | 96.79%               | 0.00                 |
| 30. 1000-0000-23200-5204040-900 SUPT. OFFICE (SUPT) - UNEMPLOYMENT   | 140.00               | 0.00                 | 0.00                 | 140.00     | 100.00%              | 0.00                 |
| 31. 1000-0000-23200-5204050-900 SUPT. OFFICE (SUPT) - WORKERS COMP.  | 848.00               | 0.00                 | 0.00                 | 848.00     | 100.00%              | 0.00                 |
| 32. 1000-0000-23200-5208000-900 SUPT. OFFICE (A/A) - BENEFITS        | 1,502.00             | 0.00                 | 110.00               | 1,392.00   | 91.67%               | 15.00                |
| 33. 1000-0000-23200-5208010-900 SUPT. OFFICE (A/A) - HEALTH          | 22,379.00            | 0.00                 | 0.00                 | 22,379.00  | 100.00%              | 0.00                 |
| 34. 1000-0000-23200-5208015-900 SUPT. OFFICE (A/A) - DENTAL          | 425.00               | 0.00                 | 0.00                 | 425.00     | 100.00%              | 0.00                 |
| 35. 1000-0000-23200-5208020-900 SUPT. OFFICE (A/A) - OASDI/MCR       | 3,841.00             | 315.88               | 1,412.30             | 2,428.70   | 63.23%               | 0.00                 |
| 36. 1000-0000-23200-5208040-900 SUPT. OFFICE (A/A) - UNEMPLOYMENT    | 140.00               | 0.00                 | 0.00                 | 140.00     | 100.00%              | 0.00                 |
| 37. 1000-0000-23200-5208050-900 SUPT. OFFICE (A/A) - WORKERS COMP.   | 282.00               | 0.00                 | 0.00                 | 282.00     | 100.00%              | 0.00                 |
| 38. 1000-0000-23200-5234000-900 SUPT. OFFICE (SUPT) - RETIREMENT     | 6,591.00             | 0.00                 | 218.00               | 6,373.00   | 96.69%               | 0.00                 |
| 39. 1000-0000-23200-5238000-900 RETIREMENT CONT./REGULAR E/E         | 0.00                 | 123.88               | 553.85               | (553.85)   |                      | 0.00                 |
| 40. 1000-0000-23200-5264000-900 PFML ADMIN                           | 1,512.00             | 0.00                 | 0.00                 | 1,512.00   | 100.00%              | 0.00                 |
| 41. 1000-0000-23200-5268000-900 Maine PFML other ee                  | 502.00               | 20.64                | 92.31                | 409.69     | 81.61%               | 0.00                 |
| 42. 1000-0000-23200-5312000-900 SUPT OFFICE SERVICES-CONTRACTED      | 15,500.00            | 0.00                 | 14,072.66            | 1,427.34   | 9.20%                | 0.00                 |
| 43. 1000-0000-23200-5330000-900 SUPT. OFFICE - EE TRAINING & DEVELOP | 1,600.00             | 0.00                 | 0.00                 | 1,600.00   | 100.00%              | 0.00                 |
| 44. 1000-0000-23200-5444500-900 SUPT. OFFICE - COPIER LEASE          | 5,000.00             | 0.00                 | 1,384.88             | 3,615.12   | 72.30%               | 0.00                 |
| 45. 1000-0000-23200-5520000-900 SUPT. OFFICE - LIABILITY INSURANCE   | 615.00               | 0.00                 | 329.00               | 286.00     | 46.50%               | 0.00                 |
| 46. 1000-0000-23200-5532000-900 SUPT. OFFICE - TELEPHONES            | 3,864.00             | 421.89               | 1,122.60             | 2,741.40   | 70.94%               | 0.00                 |
| 47. 1000-0000-23200-5580000-900 SUPT. OFFICE - STAFF TRAVEL          | 1,500.00             | 0.00                 | 0.00                 | 1,500.00   | 100.00%              | 0.00                 |
| 48. 1000-0000-23200-5600000-900 SUPT. OFFICE - OFFICE SUPPLIES       | 3,580.00             | 0.00                 | 116.27               | 3,463.73   | 79.71%               | 609.90               |
| 49. 1000-0000-23200-5600030-900 SUPT. OFFICE - POSTAGE               | 4,020.00             | 276.00               | 388.00               | 3,632.00   | 66.56%               | 956.00               |
| 50. 1000-0000-23200-5810000-900 MEMBERSHIPS & DUES - SUPT. OFFICE    | 1,700.00             | 1,600.00             | 1,675.00             | 25.00      | 1.47%                | 0.00                 |
| 51. 1000-0000-25000-5118000-900 Business Office WAGES                | 128,234.00           | 6,038.46             | 35,967.69            | 92,266.31  | 71.95%               | 0.00                 |
| 52. 1000-0000-25000-5208000-900 Business office BENEFITS             | 1,250.00             | 0.00                 | 150.64               | 1,099.36   | 68.74%               | 240.00               |

# MSAD63

## FY25 Financial Statement

| Account Number / Description                                     | Adopted Budget       | Current Period       | Reported Period      | Bal Remg            | Percent Remaining    | Encumbrances         |
|--|----------------------|----------------------|----------------------|---------------------|----------------------|----------------------|
|  | 7/1/2025 - 6/30/2026 | 9/1/2025 - 9/30/2025 | 7/1/2025 - 6/30/2026 |                     | 7/1/2025 - 6/30/2026 | 7/1/2025 - 6/30/2026 |
| 53. 1000-0000-25000-5208010-900 C/S - HEALTH INSURANCE           | 43,333.00            | 2,176.96             | 8,187.74             | 35,145.26           | 81.10%               | 0.00                 |
| 54. 1000-0000-25000-5208015-900 C/S - DENTAL INSURANCE           | 450.00               | 32.08                | 144.36               | 305.64              | 67.92%               | 0.00                 |
| 55. 1000-0000-25000-5208020-900 C/S - OASDI/MCR                  | 9,887.00             | 396.04               | 2,556.99             | 7,330.01            | 74.13%               | 0.00                 |
| 56. 1000-0000-25000-5208040-900 C/S - UNEMPLOYMENT INSURANCE     | 280.00               | 0.00                 | 0.00                 | 280.00              | 100.00%              | 0.00                 |
| 57. 1000-0000-25000-5208050-900 C/S - WORKERS COMPENSATION       | 725.00               | 0.00                 | 0.00                 | 725.00              | 100.00%              | 0.00                 |
| 58. 1000-0000-25000-5218015-900 Dental                           | 425.00               | 0.00                 | 0.00                 | 425.00              | 100.00%              | 0.00                 |
| 59. 1000-0000-25000-5238000-900 C/S - RETIREMENT CONTRIBUTIONS   | 1,169.00             | 0.00                 | 443.62               | 725.38              | 62.05%               | 0.00                 |
| <b>Subtotal System Administration</b>                            | <b>\$554,953.50</b>  | <b>\$23,923.19</b>   | <b>\$133,358.74</b>  | <b>\$421,594.76</b> | <b>73.52%</b>        | <b>\$13,585.90</b>   |
| <b><u>School Administration</u></b>                              |                      |                      |                      |                     |                      |                      |
| 60. 1000-0000-24000-5104000-110 PRINCIPAL SALARY - HOLBROOK      | 101,209.00           | 12,721.45            | 20,253.35            | 80,955.65           | 79.98%               | 0.00                 |
| 61. 1000-0000-24000-5104000-120 PRINCIPAL SALARY - EDDINGTON     | 72,213.00            | 0.00                 | 5,028.84             | 67,184.16           | 93.03%               | 0.00                 |
| 62. 1000-0000-24000-5104000-130 PRINCIPAL SALARY - HOLDEN        | 82,463.00            | 6,038.46             | 18,498.00            | 63,965.00           | 77.56%               | 0.00                 |
| 63. 1000-0000-24000-5118010-110 SECRETARIAL WAGES - HOLBROOK     | 45,090.00            | 2,971.20             | 14,462.95            | 30,627.05           | 67.92%               | 0.00                 |
| 64. 1000-0000-24000-5118010-120 SECRETARIAL WAGES - EDDINGTON    | 41,006.00            | 3,748.28             | 8,756.52             | 32,249.48           | 78.64%               | 0.00                 |
| 65. 1000-0000-24000-5118010-130 SECRETARIAL WAGES - HOLDEN       | 41,006.00            | 3,815.10             | 7,857.80             | 33,148.20           | 80.83%               | 0.00                 |
| 66. 1000-0000-24000-5202040-110 UNEMPLOYMENT                     | 140.00               | 0.00                 | 0.00                 | 140.00              | 100.00%              | 0.00                 |
| 67. 1000-0000-24000-5204000-110 PRINCIPAL BENEFITS - HOLBROOK    | 950.00               | 0.00                 | 0.00                 | 950.00              | 100.00%              | 0.00                 |
| 68. 1000-0000-24000-5204000-120 PRINCIPAL BENEFITS - EDDINGTON   | 950.00               | 0.00                 | 0.00                 | 950.00              | 100.00%              | 0.00                 |
| 69. 1000-0000-24000-5204000-130 PRINCIPAL BENEFITS - HOLDEN      | 950.00               | 0.00                 | 0.00                 | 950.00              | 100.00%              | 0.00                 |
| 70. 1000-0000-24000-5204010-110 PRINCIPAL HEALTH - HOLBROOK      | 26,980.00            | 1,920.70             | 3,841.40             | 23,138.60           | 85.76%               | 0.00                 |
| 71. 1000-0000-24000-5204010-120 PRINCIPAL HEALTH - EDDINGTON     | 26,980.00            | 0.00                 | 2,059.68             | 24,920.32           | 92.36%               | 0.00                 |
| 72. 1000-0000-24000-5204010-130 PRINCIPAL HEALTH - HOLDEN        | 23,750.00            | 2,315.54             | 5,788.85             | 17,961.15           | 75.62%               | 0.00                 |
| 73. 1000-0000-24000-5204015-110 PRINCIPAL DENTAL - HOLBROOK      | 450.00               | 27.92                | 55.84                | 394.16              | 87.59%               | 0.00                 |
| 74. 1000-0000-24000-5204015-120 PRINCIPAL DENTAL - EDDINGTON     | 450.00               | 0.00                 | 0.00                 | 450.00              | 100.00%              | 0.00                 |
| 75. 1000-0000-24000-5204015-130 PRINCIPAL DENTAL - HOLDEN        | 450.00               | 0.00                 | 0.00                 | 450.00              | 100.00%              | 0.00                 |
| 76. 1000-0000-24000-5204020-110 PRINCIPAL MCR- HOLBROOK          | 1,468.00             | 181.37               | 287.37               | 1,180.63            | 80.42%               | 0.00                 |
| 77. 1000-0000-24000-5204020-120 PRINCIPAL MCR - EDDINGTON        | 1,047.00             | 0.00                 | 60.14                | 986.86              | 94.25%               | 0.00                 |
| 78. 1000-0000-24000-5204020-130 PRINCIPAL MCR - HOLDEN           | 1,196.00             | 73.16                | 232.23               | 963.77              | 80.58%               | 0.00                 |
| 79. 1000-0000-24000-5204040-110 PRINCIPAL UNEMPLOYMENT - HOLBROO | 140.00               | 0.00                 | 0.00                 | 140.00              | 100.00%              | 0.00                 |

# MSAD63

## FY25 Financial Statement

| Account Number / Description   | Adopted Budget       | Current Period       | Reported Period      | Bal Remg  | Percent Remaining    | Encumbrances         |
|--|----------------------|----------------------|----------------------|-----------|----------------------|----------------------|
|  | 7/1/2025 - 6/30/2026 | 9/1/2025 - 9/30/2025 | 7/1/2025 - 6/30/2026 |           | 7/1/2025 - 6/30/2026 | 7/1/2025 - 6/30/2026 |
| 80. 1000-0000-24000-5204040-120 PRINCIPAL UNEMPLOYMENT - EDDINGTC    | 140.00               | 0.00                 | 0.00                 | 140.00    | 100.00%              | 0.00                 |
| 81. 1000-0000-24000-5204050-110 PRINCIPAL WORKERS COMP. - HOLBROO    | 568.00               | 0.00                 | 110.00               | 458.00    | 60.38%               | 115.00               |
| 82. 1000-0000-24000-5204050-120 PRINCIPAL WORKERS COMP. - EDDINGTC   | 405.00               | 0.00                 | 110.00               | 295.00    | 56.79%               | 65.00                |
| 83. 1000-0000-24000-5204050-130 PRINCIPAL WORKERS COMP. - HOLDEN     | 463.00               | 0.00                 | 110.00               | 353.00    | 56.80%               | 90.00                |
| 84. 1000-0000-24000-5208010-110 SECRETARIAL HEALTH - HOLBROOK        | 13,348.00            | 1,088.28             | 4,353.12             | 8,994.88  | 67.38%               | 0.00                 |
| 85. 1000-0000-24000-5208010-120 SECRETARIAL HEALTH - EDDINGTON       | 3,500.00             | 0.00                 | 0.00                 | 3,500.00  | 100.00%              | 0.00                 |
| 86. 1000-0000-24000-5208010-130 SECRETARIAL HEALTH - HOLDEN          | 26,980.00            | 1,488.28             | 3,251.59             | 23,728.41 | 87.94%               | 0.00                 |
| 87. 1000-0000-24000-5208015-110 SECRETARIAL DENTAL - HOLBROOK        | 425.00               | 32.08                | 128.32               | 296.68    | 69.80%               | 0.00                 |
| 88. 1000-0000-24000-5208015-120 SECRETARIAL DENTAL - EDDINGTON       | 425.00               | 0.00                 | 0.00                 | 425.00    | 100.00%              | 0.00                 |
| 89. 1000-0000-24000-5208020-110 SECRETARIAL OASDI/MCR - HOLBROOK     | 3,450.00             | 218.30               | 1,077.38             | 2,372.62  | 68.77%               | 0.00                 |
| 90. 1000-0000-24000-5208020-120 SECRETARIAL OASDI/MCR - EDDINGTON    | 3,137.00             | 286.74               | 669.89               | 2,467.11  | 78.64%               | 0.00                 |
| 91. 1000-0000-24000-5208020-130 SECRETARIAL OASDI/MCR - HOLDEN       | 3,137.00             | 165.30               | 366.44               | 2,770.56  | 88.31%               | 0.00                 |
| 92. 1000-0000-24000-5208040-110 SECRETARIAL UNEMPLOYMENT - HOLBR     | 140.00               | 11.42                | 28.24                | 111.76    | 79.82%               | 0.00                 |
| 93. 1000-0000-24000-5208040-120 SECRETARIAL UNEMPLOYMENT - EDDIN     | 140.00               | 0.00                 | 0.46                 | 139.54    | 99.67%               | 0.00                 |
| 94. 1000-0000-24000-5208040-130 SECRETARIAL UNEMPLOYMENT - HOLDE     | 140.00               | 0.00                 | 1.88                 | 138.12    | 98.65%               | 0.00                 |
| 95. 1000-0000-24000-5208050-110 SECRETARIAL WORKERS COMP. - HOLBR    | 250.00               | 0.00                 | 0.00                 | 250.00    | 100.00%              | 0.00                 |
| 96. 1000-0000-24000-5208050-120 SECRETARIAL WORKERS COMP. - EDDING   | 225.00               | 0.00                 | 0.00                 | 225.00    | 100.00%              | 0.00                 |
| 97. 1000-0000-24000-5208050-130 SECRETARIAL WORKERS COMP. - HOLDE    | 225.00               | 0.00                 | 0.00                 | 225.00    | 100.00%              | 0.00                 |
| 98. 1000-0000-24000-5234000-110 RETIREMENT CONTRIBUTIONS/ADMINIS'    | 4,413.00             | 554.65               | 883.03               | 3,529.97  | 79.99%               | 0.00                 |
| 99. 1000-0000-24000-5234000-120 RETIREMENT CONTRIBUTIONS/ADMINIS'    | 3,148.00             | 0.00                 | 219.26               | 2,928.74  | 93.03%               | 0.00                 |
| 100. 1000-0000-24000-5234000-130 RETIREMENT CONTRIBUTIONS/ADMINIS    | 3,595.00             | 263.28               | 806.52               | 2,788.48  | 77.56%               | 0.00                 |
| 101. 1000-0000-24000-5238010-110 RETIREMENT                          | 0.00                 | 0.00                 | 154.91               | (154.91)  |                      | 0.00                 |
| 102. 1000-0000-24000-5264000-120 Maine PFML Admin                    | 722.00               | 0.00                 | 20.72                | 701.28    | 97.13%               | 0.00                 |
| 103. 1000-0000-24000-5264000-130 PFML ADMIN                          | 0.00                 | 25.24                | 80.11                | (80.11)   |                      | 0.00                 |
| 104. 1000-0000-24000-5264500-110 Maine PFML Admin                    | 1,012.00             | 0.00                 | 0.00                 | 1,012.00  | 100.00%              | 0.00                 |
| 105. 1000-0000-24000-5264500-130 Maine PFML Admin                    | 825.00               | 0.00                 | 0.00                 | 825.00    | 100.00%              | 0.00                 |
| 106. 1000-0000-24000-5330080-110 PRIN. TRAINING & DEVELOPMENT - HOL  | 400.00               | 0.00                 | 0.00                 | 400.00    | 100.00%              | 0.00                 |
| 107. 1000-0000-24000-5330080-120 PRIN. TRAINING & DEVELOPMENT - EDDI | 600.00               | 0.00                 | 995.00               | (395.00)  | (65.83)%             | 0.00                 |
| 108. 1000-0000-24000-5330080-130 PRIN. TRAINING & DEVELOPMENT - HOL  | 600.00               | 0.00                 | 995.00               | (395.00)  | (65.83)%             | 0.00                 |
| 109. 1000-0000-24000-5444500-110 COPIER LEASE - HOLBROOK             | 11,500.00            | 0.00                 | 3,302.40             | 8,197.60  | 71.28%               | 0.00                 |

# MSAD63

## FY25 Financial Statement

| Account Number / Description   | Adopted Budget       | Current Period       | Reported Period      | Bal Remg            | Percent Remaining    | Encumbrances         |
|--|----------------------|----------------------|----------------------|---------------------|----------------------|----------------------|
|  | 7/1/2025 - 6/30/2026 | 9/1/2025 - 9/30/2025 | 7/1/2025 - 6/30/2026 |                     | 7/1/2025 - 6/30/2026 | 7/1/2025 - 6/30/2026 |
| 110. 1000-0000-24000-5444500-120 COPIER LEASE - EDDINGTON            | 5,500.00             | 0.00                 | 2,130.58             | 3,369.42            | 61.26%               | 0.00                 |
| 111. 1000-0000-24000-5444500-130 COPIER LEASE - HOLDEN               | 6,000.00             | 0.00                 | 2,450.17             | 3,549.83            | 59.16%               | 0.00                 |
| 112. 1000-0000-24000-5532000-110 TELEPHONE - HOLBROOK                | 4,260.00             | 582.62               | 1,550.28             | 2,709.72            | 63.60%               | 0.00                 |
| 113. 1000-0000-24000-5532000-120 TELEPHONE - EDDINGTON               | 2,400.00             | 156.59               | 441.08               | 1,958.92            | 81.62%               | 0.00                 |
| 114. 1000-0000-24000-5532000-130 TELEPHONE - HOLDEN                  | 2,400.00             | 313.93               | 923.84               | 1,476.16            | 61.50%               | 0.00                 |
| 115. 1000-0000-24000-5580000-110 PRINCIPAL OFFICE TRAVEL - HOLBROOK  | 150.00               | 0.00                 | 0.00                 | 150.00              | 100.00%              | 0.00                 |
| 116. 1000-0000-24000-5580000-120 PRINCIPAL OFFICE TRAVEL - EDDINGTON | 150.00               | 0.00                 | 0.00                 | 150.00              | 100.00%              | 0.00                 |
| 117. 1000-0000-24000-5580000-130 PRINCIPAL OFFICE TRAVEL - HOLDEN    | 150.00               | 0.00                 | 0.00                 | 150.00              | 100.00%              | 0.00                 |
| 118. 1000-0000-24000-5600010-110 OFFICE SUPPLIES - HOLBROOK          | 1,002.00             | 0.00                 | 205.83               | 796.17              | 79.45%               | 0.00                 |
| 119. 1000-0000-24000-5600010-120 OFFICE SUPPLIES - EDDINGTON         | 1,200.00             | 58.63                | 58.63                | 1,141.37            | 84.82%               | 123.49               |
| 120. 1000-0000-24000-5600010-130 OFFICE SUPPLIES - HOLDEN            | 1,200.00             | 0.00                 | 453.78               | 746.22              | 53.52%               | 103.98               |
| 121. 1000-0000-24000-5600030-110 POSTAGE - HOLBROOK                  | 1,400.00             | 0.00                 | 0.00                 | 1,400.00            | 100.00%              | 0.00                 |
| 122. 1000-0000-24000-5600030-120 POSTAGE - EDDINGTON                 | 1,600.00             | 0.00                 | 0.00                 | 1,600.00            | 64.75%               | 564.00               |
| 123. 1000-0000-24000-5600030-130 POSTAGE - HOLDEN                    | 1,700.00             | 0.00                 | 282.00               | 1,418.00            | 37.41%               | 782.00               |
| 124. 1000-0000-24000-5605000-130 NON-INSTRUCTIONAL EQUIPMENT - HOI   | 300.00               | 0.00                 | 0.00                 | 300.00              | 100.00%              | 0.00                 |
| 125. 1000-0000-24000-5810000-110 MEMBERSHIPS & DUES - HOLBROOK       | 315.00               | 0.00                 | 75.00                | 240.00              | 76.19%               | 0.00                 |
| 126. 1000-0000-24000-5810000-120 MEMBERSHIPS & DUES - EDDINGTON      | 0.00                 | 0.00                 | 75.00                | (75.00)             |                      | 0.00                 |
| <b>Subtotal School Administration</b>                                | <b>\$582,528.00</b>  | <b>\$39,058.52</b>   | <b>\$113,493.43</b>  | <b>\$469,034.57</b> | <b>80.20%</b>        | <b>\$1,843.47</b>    |
| <b><u>Regular Instruction</u></b>                                    |                      |                      |                      |                     |                      |                      |
| 127. 1000-1000-21900-5340000-950 PURCHASED SERVICES '504             | 1,750.00             | 0.00                 | 0.00                 | 1,750.00            | 100.00%              | 0.00                 |
| 128. 1000-1100-10000-5101010-110 TEACHER SALARIES - HOLBROOK         | 798,491.00           | 56,037.40            | 141,006.14           | 657,484.86          | 82.34%               | 0.00                 |
| 129. 1000-1100-10000-5101010-130 TEACHERS SALARIES - HOLDEN          | 470,340.23           | 30,417.78            | 78,881.72            | 391,458.51          | 83.22%               | 0.00                 |
| 130. 1000-1100-10000-5102000-110 ED TECH - WAGES                     | 64,253.00            | 12,276.65            | 19,798.75            | 44,454.25           | 69.18%               | 0.00                 |
| 131. 1000-1100-10000-5102000-130 ED TECH - WAGES                     | 31,613.00            | 2,343.60             | 5,836.72             | 25,776.28           | 81.53%               | 0.00                 |
| 132. 1000-1100-10000-5123000-110 SUBSTITUTE WAGES - HOLBROOK         | 40,000.00            | 2,662.93             | 2,892.93             | 37,107.07           | 92.76%               | 0.00                 |
| 133. 1000-1100-10000-5123000-120 SUBSTITUTE WAGES - EDDINGTON        | 0.00                 | 230.00               | 402.50               | (402.50)            |                      | 0.00                 |
| 134. 1000-1100-10000-5123000-130 SUBSTITUTE WAGES - HOLDEN           | 16,000.00            | 57.50                | 690.00               | 15,310.00           | 95.68%               | 0.00                 |
| 135. 1000-1100-10000-5201010-110 TEACHER - HEALTH INSURANCE - HOLBI  | 235,151.00           | 11,227.76            | 45,565.57            | 189,585.43          | 80.62%               | 0.00                 |
| 136. 1000-1100-10000-5201010-130 TEACHER - HEALTH INSURANCE - HOLDI  | 83,558.00            | 7,633.40             | 26,620.36            | 56,937.64           | 68.14%               | 0.00                 |

# MSAD63

## FY25 Financial Statement

| Account Number / Description  | Adopted Budget       | Current Period       | Reported Period      | Bal Remg   | Percent Remaining    | Encumbrances         |
|---|----------------------|----------------------|----------------------|------------|----------------------|----------------------|
|   | 7/1/2025 - 6/30/2026 | 9/1/2025 - 9/30/2025 | 7/1/2025 - 6/30/2026 |            | 7/1/2025 - 6/30/2026 | 7/1/2025 - 6/30/2026 |
| 137. 1000-1100-10000-5201015-110 TEACHER - DENTAL INSURANCE - HOLBI | 5,100.00             | 251.28               | 961.14               | 4,138.86   | 81.15%               | 0.00                 |
| 138. 1000-1100-10000-5201015-130 TEACHER - DENTAL INSURANCE - HOLDI | 1,700.00             | 171.70               | 602.09               | 1,097.91   | 64.58%               | 0.00                 |
| 139. 1000-1100-10000-5201020-110 TEACHER - MCR - HOLBROOK           | 11,882.00            | 726.50               | 1,849.43             | 10,032.57  | 84.43%               | 0.00                 |
| 140. 1000-1100-10000-5201020-130 TEACHER - MCR - HOLDEN             | 6,820.00             | 432.64               | 1,121.66             | 5,698.34   | 83.55%               | 0.00                 |
| 141. 1000-1100-10000-5201040-110 TEACHER - UNEMPLOYMENT - HOLBROC   | 3,300.00             | 37.88                | 75.10                | 3,224.90   | 97.72%               | 0.00                 |
| 142. 1000-1100-10000-5201040-130 TEACHER - UNEMPLOYMENT - HOLDEN    | 1,470.00             | 23.34                | 46.91                | 1,423.09   | 96.80%               | 0.00                 |
| 143. 1000-1100-10000-5201050-110 TEACHER - WORKERS COMP. - HOLBROC  | 5,476.00             | 10.04                | 1,270.08             | 4,205.92   | 43.02%               | 1,850.00             |
| 144. 1000-1100-10000-5201050-130 TEACHER - WORKERS COMP. - HOLDEN   | 3,120.00             | 0.00                 | 600.00               | 2,520.00   | 51.12%               | 925.00               |
| 145. 1000-1100-10000-5202010-110 ED TECH - HEALTH                   | 16,848.00            | 2,451.52             | 4,250.07             | 12,597.93  | 74.77%               | 0.00                 |
| 146. 1000-1100-10000-5202010-130 ED TECH - HEALTH                   | 13,348.00            | 0.00                 | 2,176.56             | 11,171.44  | 83.69%               | 0.00                 |
| 147. 1000-1100-10000-5202015-110 ED TECH - DENTAL                   | 850.00               | 38.50                | 57.75                | 792.25     | 93.20%               | 0.00                 |
| 148. 1000-1100-10000-5202015-130 ED TECH - DENTAL                   | 425.00               | 32.08                | 112.28               | 312.72     | 73.58%               | 0.00                 |
| 149. 1000-1100-10000-5202020-110 ED TECH - OASDI/MCR                | 931.00               | 175.67               | 282.44               | 648.56     | 69.66%               | 0.00                 |
| 150. 1000-1100-10000-5202020-130 ED TECH - OASDI/MCR                | 458.00               | 33.98                | 84.57                | 373.43     | 81.53%               | 0.00                 |
| 151. 1000-1100-10000-5202040-130 UNEMPLOYMENT                       | 140.00               | 0.00                 | 0.00                 | 140.00     | 100.00%              | 0.00                 |
| 152. 1000-1100-10000-5203000-110 SUBSTITUTE BENEFITS - HOLBROOK     | 6,400.00             | 45.85                | 64.37                | 6,335.63   | 98.99%               | 0.00                 |
| 153. 1000-1100-10000-5203000-120 SUBSTITUTE BENEFITS - EDDINGTON    | 0.00                 | 18.52                | 25.28                | (25.28)    |                      | 0.00                 |
| 154. 1000-1100-10000-5203000-130 SUBSTITUTE BENEFITS - HOLDEN       | 7,083.00             | 4.62                 | 27.02                | 7,055.98   | 99.61%               | 0.00                 |
| 155. 1000-1100-10000-5231010-110 RETIREMENT                         | 35,726.00            | 2,182.44             | 5,510.90             | 30,215.10  | 84.57%               | 0.00                 |
| 156. 1000-1100-10000-5231010-130 RETIREMENT                         | 20,507.00            | 1,326.21             | 3,439.24             | 17,067.76  | 83.22%               | 0.00                 |
| 157. 1000-1100-10000-5232000-110 ED TECH - RETIREMENT               | 2,700.00             | 535.26               | 863.22               | 1,836.78   | 68.02%               | 0.00                 |
| 158. 1000-1100-10000-5232000-130 ED TECH - RETIREMENT               | 1,328.00             | 102.18               | 254.48               | 1,073.52   | 80.83%               | 0.00                 |
| 159. 1000-1100-10000-5251000-110 TEACHER TUITION - HOLBROOK         | 11,500.00            | 0.00                 | 0.00                 | 11,500.00  | 100.00%              | 0.00                 |
| 160. 1000-1100-10000-5251000-120 TEACHER TUITION - EDDINGTON        | 0.00                 | 0.00                 | 1,373.35             | (1,373.35) |                      | 2,567.35             |
| 161. 1000-1100-10000-5251000-130 TEACHER TUITION - HOLDEN           | 2,500.00             | 0.00                 | 0.00                 | 2,500.00   | 100.00%              | 0.00                 |
| 162. 1000-1100-10000-5261010-110 MePFML                             | 0.00                 | 47.34                | 93.86                | (93.86)    |                      | 0.00                 |
| 163. 1000-1100-10000-5261500-130 Maine PFML Teachers                | 2,352.00             | 0.00                 | 0.00                 | 2,352.00   | 100.00%              | 0.00                 |
| 164. 1000-1100-10000-5262000-110 Maine PFML-ETs                     | 619.00               | 60.58                | 97.40                | 521.60     | 84.26%               | 0.00                 |
| 165. 1000-1100-10000-5262000-130 Maine PFML-ETs                     | 305.00               | 11.72                | 29.17                | 275.83     | 90.43%               | 0.00                 |
| 166. 1000-1100-10000-5263000-110 PFML-SUBS                          | 200.00               | 13.31                | 14.45                | 185.55     | 92.77%               | 0.00                 |

# MSAD63

## FY25 Financial Statement

| Account Number / Description                                       | Adopted Budget          | Current Period          | Reported Period         | Bal Remg   | Percent Remaining       | Encumbrances            |
|--|-------------------------|-------------------------|-------------------------|------------|-------------------------|-------------------------|
|  | 7/1/2025 -<br>6/30/2026 | 9/1/2025 -<br>9/30/2025 | 7/1/2025 -<br>6/30/2026 |            | 7/1/2025 -<br>6/30/2026 | 7/1/2025 -<br>6/30/2026 |
| 167. 1000-1100-10000-5263000-130 PFML-SUBS                         | 80.00                   | 0.29                    | 2.30                    | 77.70      | 97.12%                  | 0.00                    |
| 168. 1000-1100-10000-5330000-110 TEACHER TRAINING & DEV, - HOLBROO | 4,925.00                | 0.00                    | 0.00                    | 4,925.00   | 100.00%                 | 0.00                    |
| 169. 1000-1100-10000-5330000-130 TEACHER TRAINING & DEV. - HOLDEN  | 1,750.00                | 0.00                    | 0.00                    | 1,750.00   | 2.80%                   | 1,701.00                |
| 170. 1000-1100-10000-5500000-130 OTHER PURCHASES SERVICES          | 3,750.00                | 0.00                    | 0.00                    | 3,750.00   | 100.00%                 | 0.00                    |
| 171. 1000-1100-10000-5610000-110 TEACHING SUPPLIES - HOLBROOK      | 24,008.00               | 0.00                    | 3,412.81                | 20,595.19  | 67.99%                  | 4,271.52                |
| 172. 1000-1100-10000-5610000-130 TEACHING SUPPLIES - HOLDEN        | 6,050.00                | 457.56                  | 2,329.62                | 3,720.38   | 49.52%                  | 723.93                  |
| 173. 1000-1100-10000-5610510-110 SPECIALISTS SUPPLIES-HOLBROOK     | 11,600.00               | 852.09                  | 4,722.30                | 6,877.70   | 15.28%                  | 5,105.10                |
| 174. 1000-1100-10000-5610510-120 SPECIALISTS SUPPLIES - EDD        | 2,000.00                | 767.68                  | 918.54                  | 1,081.46   | 27.65%                  | 528.36                  |
| 175. 1000-1100-10000-5610510-130 SPECIALISTS SUPPLIES- HLDN        | 2,000.00                | 913.72                  | 2,388.83                | (388.83)   | (22.56)%                | 62.48                   |
| 176. 1000-1100-10000-5611020-120 REPLACE INST. EQUIP. - EDDINGTON  | 1,000.00                | 0.00                    | 0.00                    | 1,000.00   | 100.00%                 | 0.00                    |
| 177. 1000-1100-10000-5611020-130 REPLACE INST. EQUIP. - HOLDEN     | 600.00                  | 0.00                    | 0.00                    | 600.00     | 100.00%                 | 0.00                    |
| 178. 1000-1100-10000-5640000-110 TEXTBOOKS - HOLBROOK              | 8,466.00                | 5,000.00                | 5,253.66                | 3,212.34   | 0.84%                   | 3,141.00                |
| 179. 1000-1100-10000-5640000-130 TEXTBOOKS - HOLDEN                | 4,882.00                | 0.00                    | 0.00                    | 4,882.00   | 11.18%                  | 4,335.84                |
| 180. 1000-1100-10000-5850000-110 FIELD & SPORTS TRIPS              | 2,200.00                | 0.00                    | 0.00                    | 2,200.00   | 100.00%                 | 0.00                    |
| 181. 1000-1100-10000-5850000-130 FIELD TRIPS                       | 440.00                  | 0.00                    | 0.00                    | 440.00     | 100.00%                 | 0.00                    |
| 182. 1000-1100-10000-5890000-110 OTHER INSTRUCTIONAL EXP.-HOLBROO  | 1,125.00                | 0.00                    | 0.00                    | 1,125.00   | 100.00%                 | 0.00                    |
| 183. 1000-1100-27000-5118040-900 DRIVER WAGES                      | 5,442.00                | 91.13                   | 188.63                  | 5,253.37   | 96.53%                  | 0.00                    |
| 184. 1000-1100-27000-5208000-900 Trans BENEFITS                    | 419.00                  | 6.97                    | 14.27                   | 404.73     | 96.59%                  | 0.00                    |
| 185. 1000-1120-10000-5101010-120 K-2 TEACHER SALARIES- EDDINGTON   | 602,381.00              | 36,743.60               | 92,378.76               | 510,002.24 | 84.66%                  | 0.00                    |
| 186. 1000-1120-10000-5101010-130 K-2 TEACHING SALARIES - HOLDEN    | 159,390.00              | 8,530.92                | 22,642.56               | 136,747.44 | 85.79%                  | 0.00                    |
| 187. 1000-1120-10000-5102000-120 K-2 ED. TECH. WAGES - EDDINGTON   | 52,176.00               | 4,459.10                | 8,656.88                | 43,519.12  | 83.40%                  | 0.00                    |
| 188. 1000-1120-10000-5123000-120 K-2 SUBSTITUTE WAGES - EDDINGTON  | 19,500.00               | 0.00                    | 0.00                    | 19,500.00  | 100.00%                 | 0.00                    |
| 189. 1000-1120-10000-5123000-130 K-2 SUBSTITUTE WAGES - HOLDEN     | 3,450.00                | 0.00                    | 0.00                    | 3,450.00   | 100.00%                 | 0.00                    |
| 190. 1000-1120-10000-5201010-120 K-2 TEACHER HEALTH - EDDINGTON    | 177,231.00              | 8,752.33                | 36,856.49               | 140,374.51 | 79.20%                  | 0.00                    |
| 191. 1000-1120-10000-5201010-130 K-2 TEACHER HEALTH - HOLDEN       | 49,630.00               | 3,066.26                | 12,450.25               | 37,179.75  | 74.91%                  | 0.00                    |
| 192. 1000-1120-10000-5201015-120 K-2 TEACHER DENTAL - EDDINGTON    | 3,187.50                | 147.98                  | 558.80                  | 2,628.70   | 82.46%                  | 0.00                    |
| 193. 1000-1120-10000-5201015-130 TEACHER DENTAL - HOLDEN           | 1,912.50                | 27.92                   | 139.60                  | 1,772.90   | 92.70%                  | 0.00                    |
| 194. 1000-1120-10000-5201020-120 K-2 TEACHER MCR - EDDINGTON       | 8,735.00                | 523.54                  | 1,310.81                | 7,424.19   | 84.99%                  | 0.00                    |
| 195. 1000-1120-10000-5201020-130 TEACHER MEDICARE - HOLDEN         | 2,311.00                | 121.28                  | 321.84                  | 1,989.16   | 86.07%                  | 0.00                    |
| 196. 1000-1120-10000-5201040-120 K-2 TEACHER UNEMPLOYMENT - EDDIN  | 1,515.00                | 34.36                   | 65.72                   | 1,449.28   | 95.66%                  | 0.00                    |

# MSAD63

## FY25 Financial Statement

| Account Number / Description   | Adopted Budget       | Current Period       | Reported Period      | Bal Remg  | Percent Remaining    | Encumbrances         |
|--|----------------------|----------------------|----------------------|-----------|----------------------|----------------------|
|  | 7/1/2025 - 6/30/2026 | 9/1/2025 - 9/30/2025 | 7/1/2025 - 6/30/2026 |           | 7/1/2025 - 6/30/2026 | 7/1/2025 - 6/30/2026 |
| 197. 1000-1120-10000-5201040-130 TEACHER UNEMPLOYMENT - HOLDENE      | 505.00               | 0.00                 | 0.00                 | 505.00    | 100.00%              | 0.00                 |
| 198. 1000-1120-10000-5201050-120 K-2 TEACHER WORKERS COMP. - EDDINC  | 3,843.00             | 0.00                 | 800.00               | 3,043.00  | 50.55%               | 1,100.00             |
| 199. 1000-1120-10000-5201050-130 TEACHER WORKERS COMPENSATION - H    | 1,017.00             | 0.00                 | 0.00                 | 1,017.00  | 100.00%              | 0.00                 |
| 200. 1000-1120-10000-5202000-120 K-2 ED. TECH. BENEFITS- EDDINGTON   | 0.00                 | 333.33               | 648.58               | (648.58)  |                      | 0.00                 |
| 201. 1000-1120-10000-5202010-120 ED TECH - HEALTH                    | 17,592.00            | 2,394.22             | 5,767.89             | 11,824.11 | 67.21%               | 0.00                 |
| 202. 1000-1120-10000-5202015-120 ED TECH - DENTAL                    | 850.00               | 32.08                | 112.28               | 737.72    | 86.79%               | 0.00                 |
| 203. 1000-1120-10000-5203000-120 K-2 SUBSTITUTE BENEFITS - EDDINGTON | 1,530.00             | 0.00                 | 0.00                 | 1,530.00  | 100.00%              | 0.00                 |
| 204. 1000-1120-10000-5203000-130 K-2 SUBSTITUTE BENEFITS - HOLDEN    | 564.00               | 0.00                 | 0.00                 | 564.00    | 100.00%              | 0.00                 |
| 205. 1000-1120-10000-5231010-120 Retirement                          | 26,264.00            | 1,602.01             | 4,027.68             | 22,236.32 | 84.66%               | 0.00                 |
| 206. 1000-1120-10000-5231010-130 RETIREMENT                          | 6,950.00             | 371.94               | 987.21               | 5,962.79  | 85.79%               | 0.00                 |
| 207. 1000-1120-10000-5251000-120 K-2 TEACHER TUITION - EDDINGTON     | 4,000.00             | 0.00                 | 0.00                 | 4,000.00  | 100.00%              | 0.00                 |
| 208. 1000-1120-10000-5261500-120 Maine PFML Teachers                 | 3,012.00             | 0.00                 | 0.00                 | 3,012.00  | 100.00%              | 0.00                 |
| 209. 1000-1120-10000-5262000-120 Maine PFML-ETs                      | 503.00               | 21.56                | 42.15                | 460.85    | 91.62%               | 0.00                 |
| 210. 1000-1120-10000-5263000-120 PFML-SUBS                           | 180.00               | 0.00                 | 0.00                 | 180.00    | 100.00%              | 0.00                 |
| 211. 1000-1120-10000-5330000-120 K-2 EE TRAINING & DEV. - EDDINGTON  | 1,750.00             | 0.00                 | 0.00                 | 1,750.00  | 100.00%              | 0.00                 |
| 212. 1000-1120-10000-5330000-130 K-2 EE TRAINING & DEV - HOLDEN      | 1,750.00             | 0.00                 | 0.00                 | 1,750.00  | 100.00%              | 0.00                 |
| 213. 1000-1120-10000-5610000-120 K-2 INSTRUCTIONAL SUPPLIES - EDDING | 10,800.00            | 2,940.30             | 3,928.31             | 6,871.69  | 49.78%               | 1,494.42             |
| 214. 1000-1120-10000-5610000-130 K-2 INSTRUCTIONAL SUPPLIES - HOLDEN | 4,150.00             | 20.58                | 2,021.95             | 2,128.05  | 48.50%               | 115.21               |
| 215. 1000-1120-10000-5640000-120 K-2 TEXTBOOKS - EDDINGTON           | 4,000.00             | 0.00                 | 0.00                 | 4,000.00  | 35.00%               | 2,600.00             |
| 216. 1000-1120-10000-5640000-130 K-2 TEXTBOOKS - HOLDEN              | 3,518.00             | 1,476.15             | 1,476.15             | 2,041.85  | 8.29%                | 1,750.00             |
| 217. 1000-1120-10000-5850000-120 FIELD TRIPS                         | 660.00               | 0.00                 | 0.00                 | 660.00    | 100.00%              | 0.00                 |
| 218. 1000-1120-10000-5850000-130 FIELD TRIPS                         | 220.00               | 0.00                 | 0.00                 | 220.00    | 100.00%              | 0.00                 |
| 219. 1000-4100-10000-5101010-950 SALARIES-ELL                        | 30,263.00            | 621.00               | 1,335.92             | 28,927.08 | 95.58%               | 0.00                 |
| 220. 1000-4100-10000-5201000-950 PROFESSIONAL BENEFITS               | 1,102.00             | 2.48                 | 3.72                 | 1,098.28  | 99.66%               | 0.00                 |
| 221. 1000-4100-10000-5201010-950 RETIREMENT                          | 2,773.00             | 171.84               | 264.41               | 2,508.59  | 90.46%               | 0.00                 |
| 222. 1000-4100-10000-5201020-950 FICA/MEDICARE                       | 922.00               | 9.00                 | 18.62                | 903.38    | 97.98%               | 0.00                 |
| 223. 1000-4100-10000-5610010-950 INSTRUCTIONAL SUPPLIES              | 250.00               | 0.00                 | 0.00                 | 250.00    | 100.00%              | 0.00                 |
| 224. 1000-4900-10000-5101010-950 SALARIES                            | 67,309.20            | 126.00               | 1,409.15             | 65,900.05 | 97.90%               | 0.00                 |
| 225. 1000-4900-10000-5123000-950 GIFTED & TALENTED - SUBSTITUTES     | 700.00               | 0.00                 | 0.00                 | 700.00    | 100.00%              | 0.00                 |
| 226. 1000-4900-10000-5201000-950 PROFESSIONAL BENEFITS               | 1,421.00             | 1.82                 | 18.61                | 1,402.39  | 98.69%               | 0.00                 |

# MSAD63

## FY25 Financial Statement

| Account Number / Description   | Adopted Budget<br>7/1/2025 -<br>6/30/2026 | Current Period<br>9/1/2025 -<br>9/30/2025 | Reported Period<br>7/1/2025 -<br>6/30/2026 | Bal Remg              | Percent<br>Remaining<br>7/1/2025 -<br>6/30/2026 | Encumbrances<br>7/1/2025 -<br>6/30/2026 |
|--|---|---|--|-----------------------|---|---|
| 227. 1000-4900-10000-5201010-950 GROUP HEALTH INSURANCE              | 0.00                                      | 0.00                                      | 341.78                                     | (341.78)              |   | 0.00                                    |
| 228. 1000-4900-10000-5201015-950 GROUP DENTAL INSURANCE              | 0.00                                      | 0.00                                      | 2.10                                       | (2.10)                |   | 0.00                                    |
| 229. 1000-4900-10000-5231010-950 RETIREMENT                          | 1,921.00                                  | 0.00                                      | 44.63                                      | 1,876.37              | 97.67%  | 0.00                                    |
| 230. 1000-4900-10000-5330000-950 GIFTED & TALENTED - EMPLOYEE TRAIN  | 200.00                                    | 0.00                                      | 0.00                                       | 200.00                | 100.00%   | 0.00                                    |
| 231. 1000-4900-10000-5600000-950 GIFTED & TALENTED - OTHER SUPPLIES  | 250.00                                    | 0.00                                      | 0.00                                       | 250.00                | 100.00%   | 0.00                                    |
| 232. 1000-4900-10000-5610000-950 GIFTED & TALENTED - INSTRUCTIONAL   | 1,500.00                                  | 0.00                                      | 0.00                                       | 1,500.00              | 100.00%   | 0.00                                    |
| 233. 1000-4900-10000-5640000-950 GIFTED & TALENTED - TEXTBOOKS       | 900.00                                    | 450.00                                    | 450.00                                     | 450.00                | 50.00%  | 0.00                                    |
| <b>Subtotal Regular Instruction</b>                                  | <b>\$3,269,569.43</b>                     | <b>\$212,691.22</b>                       | <b>\$565,291.32</b>                        | <b>\$2,704,278.11</b> | <b>81.72%</b>                                   | <b>\$32,271.21</b>                      |
| <b><u>Regular Instruction 9-12</u></b>                               |   |   |  |                       |   |   |
| 234. 1000-1200-10000-5561000-990 9-12 TUITION PAID TO OTHER RSU'S    | 1,528,746.86                              | 0.00                                      | 0.00                                       | 1,528,746.86          | 100.00%   | 0.00                                    |
| 235. 1000-1200-10000-5563000-990 9-12 PRIVATE SCHOOL TUITION         | 1,605,852.67                              | 0.00                                      | 0.00                                       | 1,605,852.67          | 100.00%   | 0.00                                    |
| 236. 1000-1200-10000-5568000-990 INSURED VALUE FACTOR                | 161,085.27                                | 0.00                                      | 0.00                                       | 161,085.27            | 100.00%   | 0.00                                    |
| <b>Subtotal REg 9-12</b>   | <b>\$3,295,684.80</b>                     | <b>\$0.00</b>                             | <b>\$0.00</b>                              | <b>\$3,295,684.80</b> | <b>100.00%</b>                                  | <b>\$0.00</b>                           |
| <b><u>Special Education</u></b>                                      |   |   |  |                       |   |   |
| 237. 1000-0000-27500-5340000-900 PURCHASED TRANSPORTATION            | 0.00                                      | 0.00                                      | 1,578.36                                   | (1,578.36)            |   | 21,523.83                               |
| 238. 1000-2200-10000-5101010-110 RR SALARIES                         | 58,008.00                                 | 0.00                                      | 1,769.24                                   | 56,238.76             | 96.95%  | 0.00                                    |
| 239. 1000-2200-10000-5101010-120 RR SALARIES                         | 52,785.00                                 | 0.00                                      | 1,000.00                                   | 51,785.00             | 98.10%  | 0.00                                    |
| 240. 1000-2200-10000-5101010-130 RR SALARIES                         | 72,295.00                                 | 5,382.30                                  | 13,215.76                                  | 59,079.24             | 81.71%  | 0.00                                    |
| 241. 1000-2200-10000-5101010-950 SPECIAL ED. (RR) TEACHER - SALARIES | 0.00                                      | 8,450.64                                  | 16,752.88                                  | (16,752.88)           |   | 0.00                                    |
| 242. 1000-2200-10000-5102000-110 RR ED TECH - WAGES                  | 54,675.00                                 | 0.00                                      | 1,025.84                                   | 53,649.16             | 98.12%  | 0.00                                    |
| 243. 1000-2200-10000-5102000-120 RR ED TECH - WAGES                  | 71,874.00                                 | 8,078.93                                  | 16,162.28                                  | 55,711.72             | 77.51%  | 0.00                                    |
| 244. 1000-2200-10000-5102000-130 RR ED TECH - WAGES                  | 71,874.00                                 | 3,724.00                                  | 5,586.00                                   | 66,288.00             | 92.22%  | 0.00                                    |
| 245. 1000-2200-10000-5123000-950 SPECIAL ED. (RR) SUBSTITUTE - WAGES | 10,000.00                                 | 115.00                                    | 115.00                                     | 9,885.00              | 98.85%  | 0.00                                    |
| 246. 1000-2200-10000-5201010-110 TCHR HEALTH INSURANCE               | 13,348.00                                 | 0.00                                      | 1,509.93                                   | 11,838.07             | 88.68%  | 0.00                                    |
| 247. 1000-2200-10000-5201010-120 TCHR HEALTH INSURANCE               | 3,500.00                                  | 0.00                                      | 286.40                                     | 3,213.60              | 91.81%  | 0.00                                    |
| 248. 1000-2200-10000-5201010-130 TCHR HEALTH INSURANCE               | 26,980.00                                 | 2,315.54                                  | 8,104.39                                   | 18,875.61             | 69.96%  | 0.00                                    |
| 249. 1000-2200-10000-5201015-110 TCHR DENTAL INSURANCE               | 425.00                                    | 0.00                                      | 0.00                                       | 425.00                | 100.00%   | 0.00                                    |
| 250. 1000-2200-10000-5201015-120 TCHR DENTAL INSURANCE               | 0.00                                      | 0.00                                      | 6.98                                       | (6.98)                |   | 0.00                                    |

# MSAD63

## FY25 Financial Statement

| Account Number / Description   | Adopted Budget       | Current Period       | Reported Period      | Bal Remg  | Percent Remaining    | Encumbrances         |
|--|----------------------|----------------------|----------------------|-----------|----------------------|----------------------|
|  | 7/1/2025 - 6/30/2026 | 9/1/2025 - 9/30/2025 | 7/1/2025 - 6/30/2026 |           | 7/1/2025 - 6/30/2026 | 7/1/2025 - 6/30/2026 |
| 251. 1000-2200-10000-5201015-130 TCHR DENTAL INSURANCE                 | 425.00               | 27.92                | 97.72                | 327.28    | 77.00%               | 0.00                 |
| 252. 1000-2200-10000-5201020-110 FICA/MEDICARE                         | 793.00               | 0.00                 | 25.65                | 767.35    | 96.76%               | 0.00                 |
| 253. 1000-2200-10000-5201020-120 FICA/MEDICARE                         | 1,042.00             | 0.00                 | 14.50                | 1,027.50  | 98.60%               | 0.00                 |
| 254. 1000-2200-10000-5201020-130 FICA/MEDICARE                         | 1,042.00             | 68.16                | 166.92               | 875.08    | 83.98%               | 0.00                 |
| 255. 1000-2200-10000-5201020-950 SPECIAL ED. (RR) TEACHER - MCR.       | 0.00                 | 122.54               | 242.93               | (242.93)  |                      | 0.00                 |
| 256. 1000-2200-10000-5201040-110 UNEMPLOYMENT COMP. INSURANCE          | 280.00               | 0.00                 | 0.00                 | 280.00    | 100.00%              | 0.00                 |
| 257. 1000-2200-10000-5201040-120 UNEMPLOYMENT COMP. INSURANCE          | 140.00               | 0.00                 | 0.00                 | 140.00    | 100.00%              | 0.00                 |
| 258. 1000-2200-10000-5201040-130 UNEMPLOYMENT COMP. INSURANCE          | 140.00               | 0.00                 | 0.00                 | 140.00    | 100.00%              | 0.00                 |
| 259. 1000-2200-10000-5201040-950 SPECIAL ED. (RR) TEACHER - UNEMPLOY   | 0.00                 | 33.82                | 67.03                | (67.03)   |                      | 0.00                 |
| 260. 1000-2200-10000-5201050-110 WORKERS'COMP. INSURANCE               | 721.00               | 0.00                 | 150.00               | 571.00    | 30.65%               | 350.00               |
| 261. 1000-2200-10000-5201050-120 WORKERS'COMP. INSURANCE               | 337.00               | 0.00                 | 125.00               | 212.00    | 0.00%                | 212.00               |
| 262. 1000-2200-10000-5201050-130 WORKERS'COMP. INSURANCE               | 461.00               | 0.00                 | 105.00               | 356.00    | 72.88%               | 20.00                |
| 263. 1000-2200-10000-5202000-950 SPECIAL ED. (RR) ED. TECH. - BENEFITS | 0.00                 | 0.00                 | 4.00                 | (4.00)    |                      | 0.00                 |
| 264. 1000-2200-10000-5202010-120 ED TECH - HEALTH                      | 5,600.00             | 1,374.68             | 4,925.92             | 674.08    | 12.03%               | 0.00                 |
| 265. 1000-2200-10000-5202010-130 ED TECH - HEALTH                      | 13,348.00            | 1,305.96             | 1,958.94             | 11,389.06 | 85.32%               | 0.00                 |
| 266. 1000-2200-10000-5202015-110 ED TECH - DENTAL                      | 850.00               | 0.00                 | 48.12                | 801.88    | 94.33%               | 0.00                 |
| 267. 1000-2200-10000-5202015-120 ED TECH - DENTAL                      | 425.00               | 74.58                | 197.28               | 227.72    | 53.58%               | 0.00                 |
| 268. 1000-2200-10000-5202015-130 ED TECH - DENTAL                      | 850.00               | 38.50                | 57.75                | 792.25    | 93.20%               | 0.00                 |
| 269. 1000-2200-10000-5202020-110 ED TECH - OASDI/MCR                   | 764.00               | 0.00                 | 14.87                | 749.13    | 98.05%               | 0.00                 |
| 270. 1000-2200-10000-5202020-120 ED TECH - OASDI/MCR                   | 1,004.00             | 287.68               | 460.04               | 543.96    | 54.17%               | 0.00                 |
| 271. 1000-2200-10000-5202020-130 ED TECH - OASDI/MCR                   | 906.00               | 51.96                | 77.94                | 828.06    | 91.39%               | 0.00                 |
| 272. 1000-2200-10000-5202040-110 ED TECH - UNEMPLOYMENT                | 280.00               | 0.00                 | 0.00                 | 280.00    | 100.00%              | 0.00                 |
| 273. 1000-2200-10000-5202040-120 ED TECH - UNEMPLOYMENT                | 280.00               | 11.01                | 14.68                | 265.32    | 94.75%               | 0.00                 |
| 274. 1000-2200-10000-5202040-130 ED TECH - UNEMPLOYMENT                | 280.00               | 0.00                 | 0.00                 | 280.00    | 100.00%              | 0.00                 |
| 275. 1000-2200-10000-5202050-110 ED TECH - WORKERS COMP                | 346.00               | 0.00                 | 105.00               | 241.00    | 63.87%               | 20.00                |
| 276. 1000-2200-10000-5202050-120 ED TECH - WORKERS COMP                | 442.00               | 0.00                 | 105.00               | 337.00    | 71.71%               | 20.00                |
| 277. 1000-2200-10000-5202050-130 ED TECH - WORKERS COMP                | 399.00               | 0.00                 | 105.00               | 294.00    | 68.67%               | 20.00                |
| 278. 1000-2200-10000-5203000-950 SPECIAL ED. (RR) SUBSTITUTE - BENEFIT | 0.00                 | 9.26                 | 9.26                 | (9.26)    |                      | 0.00                 |
| 279. 1000-2200-10000-5231010-110 TCHR RETIREMENT                       | 4,930.00             | 0.00                 | 77.14                | 4,852.86  | 98.43%               | 0.00                 |
| 280. 1000-2200-10000-5231010-120 TCHR RETIREMENT                       | 3,152.00             | 0.00                 | 43.60                | 3,108.40  | 98.61%               | 0.00                 |

# MSAD63

## FY25 Financial Statement

| Account Number / Description   | Adopted Budget       | Current Period       | Reported Period      | Bal Remg   | Percent Remaining    | Encumbrances         |
|--|----------------------|----------------------|----------------------|------------|----------------------|----------------------|
|  | 7/1/2025 - 6/30/2026 | 9/1/2025 - 9/30/2025 | 7/1/2025 - 6/30/2026 |            | 7/1/2025 - 6/30/2026 | 7/1/2025 - 6/30/2026 |
| 281. 1000-2200-10000-5231010-130 TCHR RETIREMENT                       | 2,301.00             | 234.66               | 576.19               | 1,724.81   | 74.95%               | 0.00                 |
| 282. 1000-2200-10000-5231010-950 RETIREMENT                            | 0.00                 | 368.46               | 730.44               | (730.44)   |                      | 0.00                 |
| 283. 1000-2200-10000-5232000-110 ED TECH - RETIREMENT                  | 2,297.00             | 0.00                 | 44.73                | 2,252.27   | 98.05%               | 0.00                 |
| 284. 1000-2200-10000-5232000-120 ED TECH - RETIREMENT                  | 3,020.00             | 232.32               | 544.79               | 2,475.21   | 81.96%               | 0.00                 |
| 285. 1000-2200-10000-5232000-130 ED TECH - RETIREMENT                  | 2,725.00             | 162.36               | 243.54               | 2,481.46   | 91.06%               | 0.00                 |
| 286. 1000-2200-10000-5252000-950 Tuition Support Staff                 | 6,450.00             | 0.00                 | 0.00                 | 6,450.00   | 100.00%              | 0.00                 |
| 287. 1000-2200-10000-5261010-120 PFML PROFESSIONALS                    | 0.00                 | 0.00                 | 5.00                 | (5.00)     |                      | 0.00                 |
| 288. 1000-2200-10000-5261500-110 Maine PFML Teachers                   | 565.00               | 0.00                 | 0.00                 | 565.00     | 100.00%              | 0.00                 |
| 289. 1000-2200-10000-5261500-120 Maine PFML Teachers                   | 264.00               | 0.00                 | 0.00                 | 264.00     | 100.00%              | 0.00                 |
| 290. 1000-2200-10000-5261500-130 Maine PFML Teachers                   | 361.00               | 0.00                 | 0.00                 | 361.00     | 100.00%              | 0.00                 |
| 291. 1000-2200-10000-5262000-110 Maine PFML-ETs                        | 263.00               | 0.00                 | 5.13                 | 257.87     | 98.04%               | 0.00                 |
| 292. 1000-2200-10000-5262000-120 Maine PFML-ETs                        | 346.00               | 40.39                | 80.22                | 265.78     | 76.81%               | 0.00                 |
| 293. 1000-2200-10000-5262000-130 Maine PFML-ETs                        | 312.00               | 17.92                | 26.88                | 285.12     | 91.38%               | 0.00                 |
| 294. 1000-2200-10000-5330000-950 SPECIAL ED. (RR) TEACHER - TRAINING   | 5,850.00             | 0.00                 | 0.00                 | 5,850.00   | 59.82%               | 2,350.00             |
| 295. 1000-2200-10000-5344000-950 SPECIAL ED. (RR) PURCH. PROF. SERVICE | 5,500.00             | 0.00                 | 0.00                 | 5,500.00   | 86.36%               | 750.00               |
| 296. 1000-2200-10000-5561000-990 Spec Ed regular tuition-SECONDARY     | 222,746.58           | 0.00                 | 0.00                 | 222,746.58 | 100.00%              | 0.00                 |
| 297. 1000-2200-10000-5600010-110 SPECIAL ED. (RR) TEACHING SUPPLIES    | 350.00               | 0.00                 | 0.00                 | 350.00     | 100.00%              | 0.00                 |
| 298. 1000-2200-10000-5610010-120 INSTRUCTIONAL SUPPLIES                | 350.00               | 0.00                 | 0.00                 | 350.00     | 100.00%              | 0.00                 |
| 299. 1000-2200-10000-5610010-130 INSTRUCTIONAL SUPPLIES                | 350.00               | 0.00                 | 0.00                 | 350.00     | 40.24%               | 209.13               |
| 300. 1000-2200-10000-5640000-950 SPECIAL ED. (RR) TEXTBOOKS            | 3,299.00             | 0.00                 | 1,112.27             | 2,186.73   | 66.28%               | 0.00                 |
| 301. 1000-2300-10000-5101010-110 SC SALARIES                           | 60,030.00            | 0.00                 | 0.00                 | 60,030.00  | 100.00%              | 0.00                 |
| 302. 1000-2300-10000-5101010-120 SC SALARIES                           | 60,030.00            | 0.00                 | 1,000.00             | 59,030.00  | 98.33%               | 0.00                 |
| 303. 1000-2300-10000-5101010-130 SC SALARIES                           | 73,485.00            | 5,249.97             | 13,181.42            | 60,303.58  | 82.06%               | 0.00                 |
| 304. 1000-2300-10000-5101010-950 SPECIAL ED. (SCC) TEACHER - SALARIES  | 0.00                 | 3,587.54             | 7,112.08             | (7,112.08) |                      | 0.00                 |
| 305. 1000-2300-10000-5102000-110 SC ED TECH - WAGES                    | 29,992.00            | 7,178.31             | 11,353.27            | 18,638.73  | 62.14%               | 0.00                 |
| 306. 1000-2300-10000-5102000-120 SC ED TECH - WAGES                    | 82,357.00            | 1,706.40             | 2,502.72             | 79,854.28  | 96.96%               | 0.00                 |
| 307. 1000-2300-10000-5102000-130 SC ED TECH - WAGES                    | 97,151.00            | 6,476.96             | 13,300.51            | 83,850.49  | 86.30%               | 0.00                 |
| 308. 1000-2300-10000-5123000-950 SPECIAL ED. (SCC) SUBSTITUTE - WAGES  | 7,200.00             | 0.00                 | 115.00               | 7,085.00   | 98.40%               | 0.00                 |
| 309. 1000-2300-10000-5201000-950 SPECIAL ED. (SCC) TEACHER BENEFITS    | 850.00               | 0.00                 | 0.00                 | 850.00     | 100.00%              | 0.00                 |
| 310. 1000-2300-10000-5201010-110 TCHR HEALTH INSURANCE                 | 23,750.00            | 0.00                 | 0.00                 | 23,750.00  | 100.00%              | 0.00                 |

# MSAD63

## FY25 Financial Statement

| Account Number / Description  | Adopted Budget       | Current Period       | Reported Period      | Bal Remg  | Percent Remaining    | Encumbrances         |
|---|----------------------|----------------------|----------------------|-----------|----------------------|----------------------|
|   | 7/1/2025 - 6/30/2026 | 9/1/2025 - 9/30/2025 | 7/1/2025 - 6/30/2026 |           | 7/1/2025 - 6/30/2026 | 7/1/2025 - 6/30/2026 |
| 311. 1000-2300-10000-5201010-120 TCHR HEALTH INSURANCE                | 3,500.00             | 0.00                 | 286.39               | 3,213.61  | 91.81%               | 0.00                 |
| 312. 1000-2300-10000-5201010-130 TCHR HEALTH INSURANCE                | 23,750.00            | 2,104.62             | 7,300.70             | 16,449.30 | 69.26%               | 0.00                 |
| 313. 1000-2300-10000-5201010-950 SPECIAL ED. (SCC) TEACHER - HEALTH   | 0.00                 | 0.00                 | 544.14               | (544.14)  |                      | 0.00                 |
| 314. 1000-2300-10000-5201015-110 TCHR DENTAL INSURANCE                | 425.00               | 0.00                 | 0.00                 | 425.00    | 100.00%              | 0.00                 |
| 315. 1000-2300-10000-5201015-120 GROUP DENTAL INSURANCE               | 425.00               | 0.00                 | 6.98                 | 418.02    | 98.35%               | 0.00                 |
| 316. 1000-2300-10000-5201015-130 TCHR DENTAL INSURANCE                | 425.00               | 27.90                | 97.65                | 327.35    | 77.02%               | 0.00                 |
| 317. 1000-2300-10000-5201015-950 SPECIAL ED. (SCC) TEACHER - DENTAL   | 0.00                 | 32.08                | 64.16                | (64.16)   |                      | 0.00                 |
| 318. 1000-2300-10000-5201020-110 FICA/MEDICARE                        | 870.00               | 0.00                 | 0.00                 | 870.00    | 100.00%              | 0.00                 |
| 319. 1000-2300-10000-5201020-130 FICA/MEDICARE                        | 469.00               | 0.00                 | 0.00                 | 469.00    | 100.00%              | 0.00                 |
| 320. 1000-2300-10000-5201020-950 SPECIAL ED. (SCC) TEACHER - MCR      | 0.00                 | 52.02                | 102.27               | (102.27)  |                      | 0.00                 |
| 321. 1000-2300-10000-5201040-130 UNEMPLOYMENT COMP. INSURANCE         | 140.00               | 7.76                 | 15.52                | 124.48    | 88.91%               | 0.00                 |
| 322. 1000-2300-10000-5201050-110 WORKERS'COMP. INSURANCE              | 383.00               | 0.00                 | 110.00               | 273.00    | 34.72%               | 140.00               |
| 323. 1000-2300-10000-5201050-130 WORKERS'COMP. INSURANCE              | 1,519.00             | 0.00                 | 105.00               | 1,414.00  | 72.81%               | 308.00               |
| 324. 1000-2300-10000-5202010-110 ED TECH - HEALTH                     | 26,696.00            | 2,240.06             | 5,645.37             | 21,050.63 | 78.85%               | 0.00                 |
| 325. 1000-2300-10000-5202010-120 ED TECH - HEALTH                     | 30,195.00            | 0.00                 | 979.56               | 29,215.44 | 96.75%               | 0.00                 |
| 326. 1000-2300-10000-5202010-130 ED TECH - HEALTH                     | 39,376.00            | 1,034.38             | 3,620.33             | 35,755.67 | 90.80%               | 0.00                 |
| 327. 1000-2300-10000-5202015-110 ED TECH - DENTAL                     | 425.00               | 77.00                | 182.86               | 242.14    | 56.97%               | 0.00                 |
| 328. 1000-2300-10000-5202015-120 ED TECH - DENTAL                     | 1,275.00             | 0.00                 | 28.88                | 1,246.12  | 97.73%               | 0.00                 |
| 329. 1000-2300-10000-5202015-130 ED TECH - DENTAL                     | 1,275.00             | 32.08                | 112.28               | 1,162.72  | 91.19%               | 0.00                 |
| 330. 1000-2300-10000-5202020-110 ED TECH - OASDI/MCR                  | 878.00               | 311.98               | 443.96               | 434.04    | 49.43%               | 0.00                 |
| 331. 1000-2300-10000-5202020-130 ED TECH - OASDI/MCR                  | 1,409.00             | 210.10               | 366.38               | 1,042.62  | 73.99%               | 0.00                 |
| 332. 1000-2300-10000-5202040-110 ED TECH - UNEMPLOYMENT               | 280.00               | 0.00                 | 0.00                 | 280.00    | 100.00%              | 0.00                 |
| 333. 1000-2300-10000-5202040-120 ED TECH - UNEMPLOYMENT               | 560.00               | 0.00                 | 0.00                 | 560.00    | 100.00%              | 0.00                 |
| 334. 1000-2300-10000-5202040-130 ED TECH - UNEMPLOYMENT               | 560.00               | 0.00                 | 0.00                 | 560.00    | 100.00%              | 0.00                 |
| 335. 1000-2300-10000-5202050-110 ED TECH - WORKERS COMP               | 200.00               | 0.00                 | 0.00                 | 200.00    | 100.00%              | 0.00                 |
| 336. 1000-2300-10000-5202050-130 ED TECH - WORKERS COMP               | 600.00               | 0.00                 | 0.00                 | 600.00    | 100.00%              | 0.00                 |
| 337. 1000-2300-10000-5203000-950 SPECIAL ED. (SCC) SUBSTITUTE - BENEF | 0.00                 | 0.00                 | 9.26                 | (9.26)    |                      | 0.00                 |
| 338. 1000-2300-10000-5231010-110 TCHR RETIREMENT                      | 2,617.00             | 0.00                 | 0.00                 | 2,617.00  | 100.00%              | 0.00                 |
| 339. 1000-2300-10000-5231010-120 RETIREMENT                           | 2,617.00             | 0.00                 | 43.60                | 2,573.40  | 98.33%               | 0.00                 |
| 340. 1000-2300-10000-5231010-950 RETIREMENT                           | 0.00                 | 156.42               | 310.09               | (310.09)  |                      | 0.00                 |

# MSAD63

## FY25 Financial Statement

| Account Number / Description   | Adopted Budget       | Current Period       | Reported Period      | Bal Remg   | Percent Remaining    | Encumbrances         |
|--|----------------------|----------------------|----------------------|------------|----------------------|----------------------|
|  | 7/1/2025 - 6/30/2026 | 9/1/2025 - 9/30/2025 | 7/1/2025 - 6/30/2026 |            | 7/1/2025 - 6/30/2026 | 7/1/2025 - 6/30/2026 |
| 341. 1000-2300-10000-5232000-110 ED TECH - RETIREMENT                  | 2,640.00             | 163.52               | 293.08               | 2,346.92   | 88.89%               | 0.00                 |
| 342. 1000-2300-10000-5232000-120 ED TECH - RETIREMENT                  | 3,461.00             | 74.40                | 109.12               | 3,351.88   | 96.84%               | 0.00                 |
| 343. 1000-2300-10000-5232000-130 ED TECH - RETIREMENT                  | 4,082.00             | 200.70               | 457.88               | 3,624.12   | 88.78%               | 0.00                 |
| 344. 1000-2300-10000-5261010-120 PFML PROFESSIONALS                    | 0.00                 | 0.00                 | 5.00                 | (5.00)     |                      | 0.00                 |
| 345. 1000-2300-10000-5261500-110 Maine PFML Teachers                   | 300.00               | 0.00                 | 0.00                 | 300.00     | 100.00%              | 0.00                 |
| 346. 1000-2300-10000-5261500-120 Maine PFML Teachers                   | 300.00               | 0.00                 | 0.00                 | 300.00     | 100.00%              | 0.00                 |
| 347. 1000-2300-10000-5261500-130 Maine PFML Teachers                   | 367.00               | 0.00                 | 0.00                 | 367.00     | 100.00%              | 0.00                 |
| 348. 1000-2300-10000-5263000-950 PFML-SUBS                             | 72.00                | 0.00                 | 0.57                 | 71.43      | 99.20%               | 0.00                 |
| 349. 1000-2300-10000-5330000-950 SPECIAL ED. (SCC) TEACHER - TRAINING  | 1,500.00             | 0.00                 | 0.00                 | 1,500.00   | 100.00%              | 0.00                 |
| 350. 1000-2300-10000-5561000-950 SpecEd Regional Tuition-ELEM          | 105,771.96           | 2,250.00             | 8,047.16             | 97,724.80  | 92.39%               | 0.00                 |
| 351. 1000-2300-10000-5561000-990 SpecEd Regional Tuition-SEC           | 230,381.03           | 0.00                 | (901.01)             | 231,282.04 | 100.39%              | 0.00                 |
| 352. 1000-2300-10000-5610010-130 SPECIAL ED. (SCC) - INST. SUPPLIES    | 2,550.00             | 64.00                | 583.88               | 1,966.12   | 37.34%               | 1,013.73             |
| 353. 1000-2300-10000-5640000-950 SPECIAL ED. (SCC) - TEXTBOOKS         | 360.00               | 0.00                 | 0.00                 | 360.00     | 100.00%              | 0.00                 |
| 354. 1000-2400-10000-5123000-950 SPECIAL ED. HOME INST. TUTOR - WAGE   | 9,800.00             | 0.00                 | 990.24               | 8,809.76   | 89.89%               | 0.00                 |
| 355. 1000-2400-10000-5203000-950 SPECIAL ED. HOME INST. TUTOR - BENEFI | 500.00               | 0.00                 | 18.32                | 481.68     | 96.33%               | 0.00                 |
| 356. 1000-2500-23300-5104000-900 SPECIAL ED. - DIRECTOR SALARY         | 83,435.00            | 6,653.84             | 23,173.02            | 60,261.98  | 72.22%               | 0.00                 |
| 357. 1000-2500-23300-5118000-900 SPECIAL ED. - SECRETARY WAGES         | 41,985.00            | 3,209.52             | 9,396.30             | 32,588.70  | 77.61%               | 0.00                 |
| 358. 1000-2500-23300-5204000-900 SPECIAL ED. - DIRECTOR BENEFITS       | 2,908.00             | 94.14                | 458.34               | 2,449.66   | 81.83%               | 70.00                |
| 359. 1000-2500-23300-5204010-900 ADMINISTRATION - HEALTH               | 13,348.00            | 2,315.54             | 6,934.41             | 6,413.59   | 48.04%               | 0.00                 |
| 360. 1000-2500-23300-5204015-900 ADMINISTRATION - DENTAL               | 450.00               | 37.50                | 107.71               | 342.29     | 76.06%               | 0.00                 |
| 361. 1000-2500-23300-5208000-900 SPECIAL ED. - SECRETARY BENEFITS      | 3,364.00             | 205.99               | 733.29               | 2,630.71   | 76.86%               | 45.00                |
| 362. 1000-2500-23300-5208010-900 REGULAR E/E - HEALTH                  | 23,750.00            | 2,194.62             | 6,583.86             | 17,166.14  | 72.27%               | 0.00                 |
| 363. 1000-2500-23300-5208015-900 REGULAR E/E - DENTAL                  | 425.00               | 28.54                | 93.46                | 331.54     | 78.00%               | 0.00                 |
| 364. 1000-2500-23300-5234000-900 RETIREMENT CONTRIBUTIONS/ADMINIS      | 3,638.00             | 290.10               | 1,010.33             | 2,627.67   | 72.22%               | 0.00                 |
| 365. 1000-2500-23300-5238000-900 SPECIAL ED. - SECRETARY RETIREMENT    | 1,127.00             | 96.28                | 281.88               | 845.12     | 74.98%               | 0.00                 |
| 366. 1000-2500-23300-5264000-900 PFML ADMIN                            | 834.00               | 28.30                | 103.15               | 730.85     | 87.63%               | 0.00                 |
| 367. 1000-2500-23300-5268000-900 PFML Support Staff                    | 376.00               | 13.46                | 41.04                | 334.96     | 89.08%               | 0.00                 |
| 368. 1000-2500-23300-5330000-900 SPECIAL ED. - EE TRAINING & DEV       | 2,750.00             | 299.00               | 299.00               | 2,451.00   | 74.58%               | 400.00               |
| 369. 1000-2500-23300-5345000-900 LEGAL SERVICES                        | 2,500.00             | 0.00                 | 0.00                 | 2,500.00   | 100.00%              | 0.00                 |
| 370. 1000-2500-23300-5444000-900 SPECIAL ED. - PURCHASED PROF. SERVIC  | 3,750.00             | 0.00                 | 3,146.50             | 603.50     | (5.00)%              | 791.00               |

# MSAD63

## FY25 Financial Statement

| Account Number / Description  | Adopted Budget        | Current Period       | Reported Period      | Bal Remg              | Percent Remaining    | Encumbrances         |
|---|-----------------------|----------------------|----------------------|-----------------------|----------------------|----------------------|
|   | 7/1/2025 - 6/30/2026  | 9/1/2025 - 9/30/2025 | 7/1/2025 - 6/30/2026 |                       | 7/1/2025 - 6/30/2026 | 7/1/2025 - 6/30/2026 |
| 371. 1000-2500-23300-5444500-900 SPECIAL ED. - OFFICE COPIER LEASE    | 4,000.00              | 0.00                 | 1,384.87             | 2,615.13              | 65.37%               | 0.00                 |
| 372. 1000-2500-23300-5532000-900 SPECIAL ED. - OFFICE TELEPHONE       | 1,750.00              | 102.27               | 291.27               | 1,458.73              | 83.35%               | 0.00                 |
| 373. 1000-2500-23300-5580000-900 SPECIAL ED. - OFFICE TRAVEL          | 2,000.00              | 0.00                 | 0.00                 | 2,000.00              | 100.00%              | 0.00                 |
| 374. 1000-2500-23300-5600000-900 SPECIAL ED. - OFFICE SUPPLIES        | 2,000.00              | 0.00                 | 0.00                 | 2,000.00              | 100.00%              | 0.00                 |
| 375. 1000-2500-23300-5810000-900 DUES & FEES - SPED OFFICE            | 575.00                | 0.00                 | 490.00               | 85.00                 | 14.78%               | 0.00                 |
| 376. 1000-2500-23300-5900000-900 CONTINGENCY SPEC ED                  | 70,000.00             | 0.00                 | 0.00                 | 70,000.00             | 100.00%              | 0.00                 |
| 377. 1000-2800-21500-5101010-950 SPECIAL ED. SPEECH TEACHER - SALARY  | 67,795.00             | 2,630.86             | 6,484.76             | 61,310.24             | 90.43%               | 0.00                 |
| 378. 1000-2800-21500-5201000-950 SPECIAL ED. SPEECH TEACHER - BENEFIT | 680.00                | 38.14                | 94.03                | 585.97                | 86.17%               | 0.00                 |
| 379. 1000-2800-21500-5201010-950 GROUP HEALTH INSURANCE               | 17,874.00             | 503.42               | 1,777.15             | 16,096.85             | 90.05%               | 0.00                 |
| 380. 1000-2800-21500-5201015-950 GROUP DENTAL INSURANCE               | 425.00                | 0.00                 | 0.00                 | 425.00                | 100.00%              | 0.00                 |
| 381. 1000-2800-21500-5201020-950 FICA/MEDICARE                        | 983.00                | 0.00                 | 0.00                 | 983.00                | 100.00%              | 0.00                 |
| 382. 1000-2800-21500-5202040-950 UNEMPLOYMENT                         | 140.00                | 0.00                 | 0.00                 | 140.00                | 100.00%              | 0.00                 |
| 383. 1000-2800-21500-5231010-950 RETIREMENT                           | 2,956.00              | 114.74               | 282.81               | 2,673.19              | 90.43%               | 0.00                 |
| 384. 1000-2800-21500-5610010-950 INSTRUCTIONAL SUPPLIES               | 300.00                | 37.17                | 37.17                | 262.83                | 87.61%               | 0.00                 |
| 385. 1000-2800-21600-5610010-950 SUPPLIES-OT                          | 1,500.00              | 0.00                 | 0.00                 | 1,500.00              | 100.00%              | 0.00                 |
| 386. 1000-4300-10000-5121000-950 SUMMER PROGRAMMING - TUTOR WAGI      | 4,665.00              | 0.00                 | 6,799.77             | (2,134.77)            | (45.76)%             | 0.00                 |
| 387. 1000-4300-10000-5200000-950 SUMMER TUTOR - BENEFITS              | 699.00                | 0.00                 | 0.00                 | 699.00                | 100.00%              | 0.00                 |
| <b>Subtotal Special Education</b>                                     | <b>\$2,033,131.57</b> | <b>\$84,660.22</b>   | <b>\$228,230.28</b>  | <b>\$1,804,901.29</b> | <b>87.38%</b>        | <b>\$28,242.69</b>   |
| <b><u>Staff &amp; Student Support</u></b>                             |                       |                      |                      |                       |                      |                      |
| 388. 1000-0000-21200-5101010-110 GUIDANCE SALARIES - HOLBROOK         | 58,995.00             | 4,541.70             | 12,004.00            | 46,991.00             | 79.65%               | 0.00                 |
| 389. 1000-0000-21200-5101010-120 GUIDANCE SALARIES - EDDINGTON        | 27,013.50             | 2,269.30             | 5,618.75             | 21,394.75             | 79.20%               | 0.00                 |
| 390. 1000-0000-21200-5101010-130 GUIDANCE SALARIES - HOLDEN           | 27,013.50             | 2,269.32             | 5,618.80             | 21,394.70             | 79.20%               | 0.00                 |
| 391. 1000-0000-21200-5201010-110 GUIDANCE - HEALTH BENEFITS - HOLBR   | 22,379.00             | 1,920.70             | 6,722.45             | 15,656.55             | 69.96%               | 0.00                 |
| 392. 1000-0000-21200-5201010-120 GUIDANCE - HEALTH BENEFITS - EDDING  | 13,490.00             | 1,157.54             | 4,051.63             | 9,438.37              | 69.96%               | 0.00                 |
| 393. 1000-0000-21200-5201010-130 GUIDANCE - HEALTH BENEFITS - HOLDE   | 13,490.00             | 1,158.00             | 4,052.76             | 9,437.24              | 69.95%               | 0.00                 |
| 394. 1000-0000-21200-5201015-110 GUIDANCE - DENTAL BENEFITS - HOLBR   | 425.00                | 27.92                | 97.72                | 327.28                | 77.00%               | 0.00                 |
| 395. 1000-0000-21200-5201020-110 GUIDANCE - MCR - HOLBROOK            | 855.00                | 64.30                | 170.18               | 684.82                | 80.09%               | 0.00                 |
| 396. 1000-0000-21200-5201020-120 GUIDANCE - MCR - EDDINGTON           | 392.00                | 26.90                | 66.46                | 325.54                | 83.04%               | 0.00                 |
| 397. 1000-0000-21200-5201020-130 GUIDANCE - MCR - HOLDEN              | 392.00                | 26.92                | 66.50                | 325.50                | 83.03%               | 0.00                 |

# MSAD63

## FY25 Financial Statement

| Account Number / Description  | Adopted Budget       | Current Period       | Reported Period      | Bal Remg  | Percent Remaining    | Encumbrances         |
|---|----------------------|----------------------|----------------------|-----------|----------------------|----------------------|
|   | 7/1/2025 - 6/30/2026 | 9/1/2025 - 9/30/2025 | 7/1/2025 - 6/30/2026 |           | 7/1/2025 - 6/30/2026 | 7/1/2025 - 6/30/2026 |
| 398. 1000-0000-21200-5201040-110 GUIDANCE - UNEMPLOYMENT- HOLBRO    | 140.00               | 0.00                 | 0.00                 | 140.00    | 100.00%              | 0.00                 |
| 399. 1000-0000-21200-5201040-120 GUIDANCE - UNEMPLOYMENT - EDDING   | 70.00                | 0.00                 | 0.00                 | 70.00     | 100.00%              | 0.00                 |
| 400. 1000-0000-21200-5201040-130 GUIDANCE - UNEMPLOYMENT - HOLDEN   | 70.00                | 0.00                 | 0.00                 | 70.00     | 100.00%              | 0.00                 |
| 401. 1000-0000-21200-5201050-110 GUIDANCE - WORKERS COMP. - HOLBRO  | 311.00               | 0.00                 | 110.00               | 201.00    | 35.69%               | 90.00                |
| 402. 1000-0000-21200-5201050-120 GUIDANCE - WORKERS COMP. - EDDING  | 143.00               | 0.00                 | 100.00               | 43.00     | 30.06%               | 0.00                 |
| 403. 1000-0000-21200-5201050-130 GUIDANCE - WORKERS COMP. - HOLDEN  | 143.00               | 0.00                 | 100.00               | 43.00     | 30.06%               | 0.00                 |
| 404. 1000-0000-21200-5231010-110 RETIREMENT                         | 2,572.00             | 198.02               | 523.38               | 2,048.62  | 79.65%               | 0.00                 |
| 405. 1000-0000-21200-5231010-120 RETIREMENT                         | 1,178.00             | 98.92                | 244.92               | 933.08    | 79.20%               | 0.00                 |
| 406. 1000-0000-21200-5231010-130 RETIREMENT                         | 1,178.00             | 98.96                | 245.02               | 932.98    | 79.20%               | 0.00                 |
| 407. 1000-0000-21200-5610010-110 GUIDANCE SUPPLIES - HOLBROOK       | 705.00               | 0.00                 | 104.61               | 600.39    | 85.16%               | 0.00                 |
| 408. 1000-0000-21200-5610010-120 GUIDANCE SUPPLIES - EDDINGTON      | 850.00               | 0.00                 | 0.00                 | 850.00    | 47.80%               | 443.64               |
| 409. 1000-0000-21200-5610010-130 GUIDANCE SUPPLIES - HOLDEN         | 850.00               | 0.00                 | 0.00                 | 850.00    | 100.00%              | 0.00                 |
| 410. 1000-0000-21300-5101010-900 NURSING SALARIES                   | 79,708.00            | 5,933.30             | 14,593.26            | 65,114.74 | 81.69%               | 0.00                 |
| 411. 1000-0000-21300-5201010-900 NURSING - HEALTH BENEFITS - HOLBRO | 13,348.00            | 1,145.56             | 4,009.46             | 9,338.54  | 69.96%               | 0.00                 |
| 412. 1000-0000-21300-5201015-900 NURSING - DENTAL BENEFITS          | 425.00               | 27.92                | 97.72                | 327.28    | 77.00%               | 0.00                 |
| 413. 1000-0000-21300-5201020-900 NURSING - MCR                      | 1,156.00             | 85.16                | 209.42               | 946.58    | 81.88%               | 0.00                 |
| 414. 1000-0000-21300-5201040-900 NURSING - UNEMPLOYMENT             | 140.00               | 0.00                 | 0.00                 | 140.00    | 100.00%              | 0.00                 |
| 415. 1000-0000-21300-5201050-900 NURSING - WORKERS COMP.            | 421.00               | 0.00                 | 110.00               | 311.00    | 52.49%               | 90.00                |
| 416. 1000-0000-21300-5231010-900 RETIREMENT                         | 3,475.00             | 258.70               | 636.27               | 2,838.73  | 81.69%               | 0.00                 |
| 417. 1000-0000-21300-5300053-900 HEALTH - OTHER PURCHASES           | 218.00               | 0.00                 | 0.00                 | 218.00    | 100.00%              | 0.00                 |
| 418. 1000-0000-21300-5330000-900 NURSING EE TRAINING & DEV.         | 150.00               | 150.00               | 150.00               | 0.00      | 0.00%                | 0.00                 |
| 419. 1000-0000-21300-5430010-900 NURSING EQUIPMENT REPAIR           | 125.00               | 0.00                 | 0.00                 | 125.00    | 100.00%              | 0.00                 |
| 420. 1000-0000-21300-5600000-900 NURSING SUPPLIES                   | 2,632.00             | 2,331.66             | 2,506.66             | 125.34    | 1.82%                | 77.43                |
| 421. 1000-0000-21400-5340000-950 PURCHASED PROF. SERVICES           | 3,500.00             | 0.00                 | 0.00                 | 3,500.00  | 100.00%              | 0.00                 |
| 422. 1000-0000-22100-5104000-900 CURRICULUM COORDINATOR SALARY      | 87,719.00            | 6,038.46             | 21,134.61            | 66,584.39 | 75.90%               | 0.00                 |
| 423. 1000-0000-22100-5201020-900 FICA/MEDICARE                      | 1,199.00             | 0.00                 | 0.00                 | 1,199.00  | 100.00%              | 0.00                 |
| 424. 1000-0000-22100-5201040-900 UC & WC                            | 604.00               | 0.00                 | 157.99               | 446.01    | 58.94%               | 90.00                |
| 425. 1000-0000-22100-5204000-900 CURRICULUM COORDINATOR BENEFITS    | 1,777.00             | 0.00                 | 0.00                 | 1,777.00  | 100.00%              | 0.00                 |
| 426. 1000-0000-22100-5204010-900 ADMINISTRATION - HEALTH            | 22,379.00            | 2,038.34             | 4,076.68             | 18,302.32 | 81.78%               | 0.00                 |
| 427. 1000-0000-22100-5204015-900 ADMINISTRATION - DENTAL            | 450.00               | 0.00                 | 0.00                 | 450.00    | 100.00%              | 0.00                 |

# MSAD63

## FY25 Financial Statement

| Account Number / Description                                      | Adopted Budget       | Current Period       | Reported Period      | Bal Remg  | Percent Remaining    | Encumbrances         |
|---|----------------------|----------------------|----------------------|-----------|----------------------|----------------------|
|   | 7/1/2025 - 6/30/2026 | 9/1/2025 - 9/30/2025 | 7/1/2025 - 6/30/2026 |           | 7/1/2025 - 6/30/2026 | 7/1/2025 - 6/30/2026 |
| 428. 1000-0000-22100-5234000-900 RETIREMENT CONTRIBUTIONS/ADMINIS | 3,607.00             | 0.00                 | 0.00                 | 3,607.00  | 100.00%              | 0.00                 |
| 429. 1000-0000-22100-5330000-900 PROFESSIONAL EE TRAINING         | 300.00               | 400.00               | 400.00               | (100.00)  | (41.83)%             | 25.49                |
| 430. 1000-0000-22100-5580000-900 STAFF TRAVEL                     | 825.00               | 0.00                 | 0.00                 | 825.00    | 100.00%              | 0.00                 |
| 431. 1000-0000-22100-5600010-900 OFFICE SUPPLIES - CURR.          | 500.00               | 0.00                 | 0.00                 | 500.00    | 100.00%              | 0.00                 |
| 432. 1000-0000-22100-5810000-900 DUES & FEES                      | 375.00               | 0.00                 | 475.00               | (100.00)  | (26.66)%             | 0.00                 |
| 433. 1000-0000-22200-5102000-110 LIBRARY AIDE WAGES               | 71,174.00            | 5,219.44             | 10,447.55            | 60,726.45 | 85.32%               | 0.00                 |
| 434. 1000-0000-22200-5202010-110 LIBRARY AIDE HEALTH              | 16,848.00            | 1,145.58             | 4,009.50             | 12,838.50 | 76.20%               | 0.00                 |
| 435. 1000-0000-22200-5202015-110 LIBRARY ADIE - DENTAL            | 680.00               | 60.00                | 145.84               | 534.16    | 78.55%               | 0.00                 |
| 436. 1000-0000-22200-5202020-110 LIBRARY AIDE - FICA/MEDICARE     | 1,032.00             | 75.69                | 151.50               | 880.50    | 85.31%               | 0.00                 |
| 437. 1000-0000-22200-5202040-110 LIBRARY AIDE - UNEMPLOYMENT      | 280.00               | 8.98                 | 17.81                | 262.19    | 93.63%               | 0.00                 |
| 438. 1000-0000-22200-5202050-110 LIBRARY AIDE - WORKERS COMP.     | 399.00               | 0.00                 | 110.00               | 289.00    | 37.34%               | 140.00               |
| 439. 1000-0000-22200-5232000-110 ED TECH - RETIREMENT             | 3,103.00             | 227.57               | 389.11               | 2,713.89  | 87.46%               | 0.00                 |
| 440. 1000-0000-22200-5262000-110 Maine PFML-ETs                   | 712.00               | 26.09                | 44.61                | 667.39    | 93.73%               | 0.00                 |
| 441. 1000-0000-22200-5600000-110 NON INSTRUCTIONAL SUPPLIES       | 775.00               | 0.00                 | 0.00                 | 775.00    | 100.00%              | 0.00                 |
| 442. 1000-0000-22200-5640000-110 LIBRARY BOOKS - HOLBROOK         | 4,950.00             | 0.00                 | 0.00                 | 4,950.00  | 100.00%              | 0.00                 |
| 443. 1000-0000-22200-5640000-120 LIBRARY BOOKS - EDDINGTON        | 1,000.00             | 0.00                 | 0.00                 | 1,000.00  | 100.00%              | 0.00                 |
| 444. 1000-0000-22200-5640000-130 LIBRARY BOOKS - HOLDEN           | 1,000.00             | 0.00                 | 0.00                 | 1,000.00  | 100.00%              | 0.00                 |
| 445. 1000-0000-22200-5735000-110 TECHNOLOGY SOFTWARE              | 950.00               | 0.00                 | 0.00                 | 950.00    | 100.00%              | 0.00                 |
| 446. 1000-0000-22300-5104000-900 TECHNOLOGY COORDINATOR SALARY    | 93,386.00            | 7,260.44             | 29,022.92            | 64,363.08 | 68.92%               | 0.00                 |
| 447. 1000-0000-22300-5118000-900 TECH ASST                        | 51,285.00            | 573.13               | 3,366.26             | 47,918.74 | 93.43%               | 0.00                 |
| 448. 1000-0000-22300-5204000-900 TECHNOLOGY COOR. - BENEFITS      | 1,889.00             | 24.96                | 87.36                | 1,801.64  | 95.37%               | 0.00                 |
| 449. 1000-0000-22300-5204010-900 TECHNOLOGY COOR. - HEALTH        | 13,348.00            | 1,145.56             | 4,009.46             | 9,338.54  | 69.96%               | 0.00                 |
| 450. 1000-0000-22300-5204015-900 TECHNOLOGY COOR. - DENTAL        | 450.00               | 37.50                | 131.25               | 318.75    | 70.83%               | 0.00                 |
| 451. 1000-0000-22300-5204020-900 TECHNOLOGY COOR. - OASDI/MCR     | 7,183.00             | 547.94               | 2,194.05             | 4,988.95  | 69.45%               | 0.00                 |
| 452. 1000-0000-22300-5204040-900 TECHNOLOGY COOR. - UNEMPLOYMENT  | 140.00               | 0.00                 | 0.00                 | 140.00    | 100.00%              | 0.00                 |
| 453. 1000-0000-22300-5204050-900 TECHNOLOGY COOR. - WORKERS COMP. | 527.00               | 0.00                 | 110.00               | 417.00    | 57.30%               | 115.00               |
| 454. 1000-0000-22300-5208010-900 REGULAR E/E - HEALTH             | 3,500.00             | 0.00                 | 0.00                 | 3,500.00  | 100.00%              | 0.00                 |
| 455. 1000-0000-22300-5208020-900 REGULAR E/E - OASDI/MCR          | 3,924.00             | 43.84                | 257.52               | 3,666.48  | 93.43%               | 0.00                 |
| 456. 1000-0000-22300-5208040-900 REGULAR E/E - UNEMPLOYMENT       | 140.00               | 2.30                 | 5.16                 | 134.84    | 96.31%               | 0.00                 |
| 457. 1000-0000-22300-5208050-900 REGULAR E/E - WORKERS COMP.      | 200.00               | 0.00                 | 0.00                 | 200.00    | 100.00%              | 0.00                 |

# MSAD63

## FY25 Financial Statement

| Account Number / Description  | Adopted Budget       | Current Period       | Reported Period      | Bal Remg            | Percent Remaining    | Encumbrances         |
|---|----------------------|----------------------|----------------------|---------------------|----------------------|----------------------|
|   | 7/1/2025 - 6/30/2026 | 9/1/2025 - 9/30/2025 | 7/1/2025 - 6/30/2026 |                     | 7/1/2025 - 6/30/2026 | 7/1/2025 - 6/30/2026 |
| 458. 1000-0000-22300-5234000-900 TECHNOLOGY COOR. - RETIREMENT      | 3,756.00             | 288.92               | 1,155.67             | 2,600.33            | 69.23%               | 0.00                 |
| 459. 1000-0000-22300-5268000-900 Maine PFML Support Staff           | 513.00               | 2.86                 | 16.83                | 496.17              | 96.71%               | 0.00                 |
| 460. 1000-0000-22300-5330000-900 TECHNOLOGY COOR. - EE TRAINING & D | 750.00               | 0.00                 | 0.00                 | 750.00              | 100.00%              | 0.00                 |
| 461. 1000-0000-22300-5610000-110 TECHNOLOGY SUPPLIES - HOLBROOK     | 2,950.00             | 0.00                 | 2,225.90             | 724.10              | 24.54%               | 0.00                 |
| 462. 1000-0000-22300-5610000-120 TECHNOLOGY SUPPLIES - EDDINGTON    | 2,775.00             | 0.00                 | 1,617.36             | 1,157.64            | 41.71%               | 0.00                 |
| 463. 1000-0000-22300-5610000-130 TECHNOLOGY SUPPLIES - HOLDEN       | 2,325.00             | 0.00                 | 1,617.36             | 707.64              | 30.43%               | 0.00                 |
| 464. 1000-0000-22300-5650000-110 TECHNOLOGY TEACHING SOFTWARE - H   | 12,175.00            | 9,400.00             | 9,400.00             | 2,775.00            | 15.40%               | 900.00               |
| 465. 1000-0000-22300-5650000-120 TECHNOLOGY TEACHING SOFTWARE - E   | 8,370.00             | 5,900.00             | 5,900.00             | 2,470.00            | 15.17%               | 1,200.00             |
| 466. 1000-0000-22300-5650000-130 TECHNOLOGY TEACHING SOFTWARE - H   | 13,865.00            | 10,500.00            | 10,500.00            | 3,365.00            | 10.20%               | 1,950.00             |
| 467. 1000-0000-22300-5650000-900 TECHNOLOGY OTHER - DISTRICT        | 61,870.00            | 4,112.00             | 53,995.03            | 7,874.97            | 6.32%                | 3,964.51             |
| 468. 1000-0000-22300-5734000-110 TECHNOLOGY HARDWARE - HOLBROOK     | 7,748.00             | 0.00                 | 1,660.00             | 6,088.00            | 78.57%               | 0.00                 |
| 469. 1000-0000-22300-5734000-120 TECHNOLOGY TEACHING HARDWARE - I   | 17,434.00            | 0.00                 | 9,925.00             | 7,509.00            | 43.07%               | 0.00                 |
| 470. 1000-0000-22300-5734000-130 TECHNOLOGY TEACHING HARDWARE - J   | 8,881.00             | 0.00                 | 1,393.00             | 7,488.00            | 84.31%               | 0.00                 |
| 471. 1000-0000-22400-5600000-900 ACADEMIC ASSESSMENT SUPPLIES       | 1,850.00             | 0.00                 | 2,601.00             | (751.00)            | (40.59)%             | 0.00                 |
| 472. 1000-4900-10000-5261010-950 PFML ADMINISTRATORS                | 0.00                 | 0.00                 | 2.58                 | (2.58)              |                      | 0.00                 |
| <b>Subtotal Staff &amp; Student Sppt</b>                            | <b>\$821,825.00</b>  | <b>\$78,870.40</b>   | <b>\$244,963.88</b>  | <b>\$576,861.12</b> | <b>69.08%</b>        | <b>\$9,086.07</b>    |
| <b><u>Subtotal Other Instruction</u></b>                            |                      |                      |                      |                     |                      |                      |
| 473. 1000-9100-10000-5150000-110 CO-CURRICULAR STIPENDS - HOLBROOK  | 11,000.00            | 0.00                 | 0.00                 | 11,000.00           | 100.00%              | 0.00                 |
| 474. 1000-9100-10000-5200000-110 CO-CURRICULAR STIPEND BENEFITS     | 1,060.00             | 0.00                 | 0.00                 | 1,060.00            | 100.00%              | 0.00                 |
| 475. 1000-9100-10000-5230000-110 RETIREMENT                         | 600.00               | 0.00                 | 0.00                 | 600.00              | 100.00%              | 0.00                 |
| 476. 1000-9100-10000-5600000-110 Extra/Co-Curr SUPPLIES             | 8,400.00             | 0.00                 | 0.00                 | 8,400.00            | 52.38%               | 4,000.00             |
| 477. 1000-9200-10000-5154000-110 ATHLETIC DIRECTOR STIPEND          | 5,337.00             | 0.00                 | 0.00                 | 5,337.00            | 100.00%              | 0.00                 |
| 478. 1000-9200-10000-5154010-110 COACHING STIPEND - HOLBROOK        | 26,663.00            | 0.00                 | 0.00                 | 26,663.00           | 100.00%              | 0.00                 |
| 479. 1000-9200-10000-5500000-110 DUES & FEES                        | 13,375.00            | 350.00               | 445.00               | 12,930.00           | 94.05%               | 350.00               |
| 480. 1000-9200-10000-5600000-110 ATHLETIC SUPPLIES                  | 8,150.00             | 854.00               | 1,061.94             | 7,088.06            | 86.97%               | 0.00                 |
| 481. 1000-9200-27000-5118040-110 DRIVER WAGES-Extra Curr Trips      | 5,544.00             | 365.88               | 496.76               | 5,047.24            | 91.03%               | 0.00                 |
| 482. 1000-9200-27000-5208000-900 Trans BENEFITS                     | 455.00               | 27.63                | 37.41                | 417.59              | 91.77%               | 0.00                 |
| <b>Subtotal Other Instrn</b>  | <b>\$80,584.00</b>   | <b>\$1,597.51</b>    | <b>\$2,041.11</b>    | <b>\$78,542.89</b>  | <b>92.06%</b>        | <b>\$4,350.00</b>    |

# MSAD63

## FY25 Financial Statement

| Account Number / Description  | Adopted Budget<br>7/1/2025 -<br>6/30/2026 | Current Period<br>9/1/2025 -<br>9/30/2025 | Reported Period<br>7/1/2025 -<br>6/30/2026 | Bal Remg  | Percent<br>Remaining<br>7/1/2025 -<br>6/30/2026 | Encumbrances<br>7/1/2025 -<br>6/30/2026 |
|---|---|---|--|-----------|---|---|
| <b>Facilities</b>   |   |   |  |           |   |   |
| 483. 1000-0000-26000-5430010-110 CONTRACTED SERVICES & REPAIRS - HO | 61,400.00                                 | 2,726.49                                  | 13,527.84                                  | 47,872.16 | 57.15%  | 12,780.67                               |
| 484. 1000-0000-26000-5430010-120 CONTRACTED SERVICES & REPAIRS - ED | 43,800.00                                 | 13,317.68                                 | 16,929.62                                  | 26,870.38 | 42.79%  | 8,127.33                                |
| 485. 1000-0000-26000-5430010-130 CONTRACTED SERVICES & REPAIRS - HO | 52,800.00                                 | 3,595.32                                  | 9,313.71                                   | 43,486.29 | 63.93%  | 9,728.90                                |
| 486. 1000-0000-26000-5431020-110 SNOW REMOVAL - HOLBROOK            | 9,192.00                                  | 0.00                                      | 0.00                                       | 9,192.00  | 0.00%   | 9,192.00                                |
| 487. 1000-0000-26000-5431020-120 SNOW REMOVAL - EDDINGTON           | 6,894.00                                  | 0.00                                      | 0.00                                       | 6,894.00  | 0.00%   | 6,894.00                                |
| 488. 1000-0000-26000-5431020-130 SNOW REMOVAL - HOLDEN              | 6,894.00                                  | 0.00                                      | 0.00                                       | 6,894.00  | 0.00%   | 6,894.00                                |
| 489. 1000-0000-26000-5431025-110 TRASH REMOVAL - HOLBROOK           | 5,726.50                                  | 0.00                                      | 1,044.60                                   | 4,681.90  | 0.00%   | 4,681.90                                |
| 490. 1000-0000-26000-5431025-120 TRASH REMOVAL - EDDINGTON          | 4,294.88                                  | 0.00                                      | 682.51                                     | 3,612.37  | 0.00%   | 3,612.37                                |
| 491. 1000-0000-26000-5431025-130 TRASH REMOVAL - HOLDEN             | 4,294.87                                  | 0.00                                      | 682.51                                     | 3,612.36  | 0.00%   | 3,612.36                                |
| 492. 1000-0000-26001-5118000-900 Maint Dir Wages                    | 64,114.00                                 | 4,959.78                                  | 19,825.15                                  | 44,288.85 | 69.07%  | 0.00                                    |
| 493. 1000-0000-26001-5208000-900 OTHER EE BENEFITS                  | 6,495.00                                  | 373.56                                    | 1,614.28                                   | 4,880.72  | 74.52%  | 40.00                                   |
| 494. 1000-0000-26001-5208010-900 REGULAR E/E - HEALTH               | 22,379.00                                 | 1,920.70                                  | 5,762.10                                   | 16,616.90 | 74.25%  | 0.00                                    |
| 495. 1000-0000-26001-5238000-900 RETIREMENT CONT./REGULAR E/E       | 2,565.00                                  | 0.00                                      | 0.00                                       | 2,565.00  | 100.00%   | 0.00                                    |
| 496. 1000-0000-26001-5268000-900 PFML Support Staff                 | 641.00                                    | 23.60                                     | 95.46                                      | 545.54    | 85.10%  | 0.00                                    |
| 497. 1000-0000-26100-5118020-110 CUSTODIAL WAGES - HOLBROOK         | 131,875.00                                | 9,934.17                                  | 39,851.42                                  | 92,023.58 | 69.78%  | 0.00                                    |
| 498. 1000-0000-26100-5118020-120 CUSTODIAL WAGES - EDDINGTON        | 69,990.00                                 | 4,616.31                                  | 16,523.46                                  | 53,466.54 | 76.39%  | 0.00                                    |
| 499. 1000-0000-26100-5118020-130 CUSTODIAL WAGES - HOLDEN           | 88,714.00                                 | 5,567.54                                  | 21,531.73                                  | 67,182.27 | 75.72%  | 0.00                                    |
| 500. 1000-0000-26100-5208010-110 CUSTODIAL HEALTH - HOLBROOK        | 53,391.00                                 | 3,294.97                                  | 11,665.51                                  | 41,725.49 | 78.15%  | 0.00                                    |
| 501. 1000-0000-26100-5208010-120 CUSTODIAL HEALTH - EDDINGTON       | 15,780.00                                 | 1,088.28                                  | 3,808.98                                   | 11,971.02 | 75.86%  | 0.00                                    |
| 502. 1000-0000-26100-5208010-130 CUSTODIAL HEALTH - HOLDEN          | 16,848.00                                 | 1,088.28                                  | 3,808.98                                   | 13,039.02 | 77.39%  | 0.00                                    |
| 503. 1000-0000-26100-5208015-110 CUSTODIAL DENTAL - HOLBROOK        | 1,275.00                                  | 64.16                                     | 224.56                                     | 1,050.44  | 82.38%  | 0.00                                    |
| 504. 1000-0000-26100-5208015-130 CUSTODIAL DENTAL - HOLDEN          | 850.00                                    | 0.00                                      | 32.08                                      | 817.92    | 96.22%  | 0.00                                    |
| 505. 1000-0000-26100-5208020-110 CUSTODIAL OASDI/MCR -HOLBROOK      | 10,088.00                                 | 732.96                                    | 2,877.00                                   | 7,211.00  | 71.48%  | 0.00                                    |
| 506. 1000-0000-26100-5208020-120 CUSTODIAL OASDI/MCR- EDDINGTON     | 5,354.00                                  | 348.76                                    | 1,248.71                                   | 4,105.29  | 76.67%  | 0.00                                    |
| 507. 1000-0000-26100-5208020-130 CUSTODIAL OASDI/MCR - HOLDEN       | 6,787.00                                  | 421.52                                    | 1,630.17                                   | 5,156.83  | 75.98%  | 0.00                                    |
| 508. 1000-0000-26100-5208040-110 CUSTODIAL UNEMPLOYMENT - HOLBRO    | 400.00                                    | 0.00                                      | 0.00                                       | 400.00    | 100.00%   | 0.00                                    |
| 509. 1000-0000-26100-5208040-120 CUSTODIAL UNEMPLOYMENT - EDDING    | 290.00                                    | 4.40                                      | 8.88                                       | 281.12    | 96.93%  | 0.00                                    |
| 510. 1000-0000-26100-5208040-130 CUSTODIAL UNEMPLOYMENT - HOLDEN    | 290.00                                    | 10.08                                     | 19.24                                      | 270.76    | 93.36%  | 0.00                                    |
| 511. 1000-0000-26100-5208050-110 CUSTODIAL WORKERS COMP. - HOLBRO   | 8,254.50                                  | 0.00                                      | 2,127.00                                   | 6,127.50  | 33.36%  | 3,373.00                                |

# MSAD63

## FY25 Financial Statement

| Account Number / Description  | Adopted Budget       | Current Period       | Reported Period      | Bal Remg   | Percent Remaining    | Encumbrances         |
|---|----------------------|----------------------|----------------------|------------|----------------------|----------------------|
|   | 7/1/2025 - 6/30/2026 | 9/1/2025 - 9/30/2025 | 7/1/2025 - 6/30/2026 |            | 7/1/2025 - 6/30/2026 | 7/1/2025 - 6/30/2026 |
| 512. 1000-0000-26100-5208050-120 CUSTODIAL WORKERS COMP. - EDDINGT    | 4,376.00             | 0.00                 | 950.00               | 3,426.00   | 20.01%               | 2,550.00             |
| 513. 1000-0000-26100-5208050-130 CUSTODIAL WORKERS COMP. - HOLDEN     | 5,553.00             | 0.00                 | 1,450.00             | 4,103.00   | 27.96%               | 2,550.00             |
| 514. 1000-0000-26100-5238000-110 CUSTODIAL RETIREMENT - HOLBROOK      | 1,256.00             | 0.00                 | 0.00                 | 1,256.00   | 100.00%              | 0.00                 |
| 515. 1000-0000-26100-5238000-130 CUSTODIAL RETIREMENT - HOLDEN        | 1,220.00             | 0.00                 | 0.00                 | 1,220.00   | 100.00%              | 0.00                 |
| 516. 1000-0000-26100-5238020-110 retirement                           | 0.00                 | 4.73                 | 62.16                | (62.16)    |                      | 0.00                 |
| 517. 1000-0000-26100-5238020-130 retirement                           | 0.00                 | 0.00                 | 1.16                 | (1.16)     |                      | 0.00                 |
| 518. 1000-0000-26100-5268020-110 PFML-Support Staff                   | 660.00               | 47.48                | 187.32               | 472.68     | 71.61%               | 0.00                 |
| 519. 1000-0000-26100-5268020-120 PFML-Support Staff                   | 349.50               | 22.80                | 81.63                | 267.87     | 76.64%               | 0.00                 |
| 520. 1000-0000-26100-5268020-130 PFML-Support Staff                   | 443.50               | 27.56                | 106.66               | 336.84     | 75.95%               | 0.00                 |
| 521. 1000-0000-26100-5521000-110 BUILDING INSURANCE                   | 40,000.00            | 0.00                 | 39,324.00            | 676.00     | 1.69%                | 0.00                 |
| 522. 1000-0000-26100-5600000-110 CUSTODIAL SUPPLIES - HOLBROOK        | 9,500.00             | 0.00                 | 2,931.23             | 6,568.77   | 0.00%                | 6,568.77             |
| 523. 1000-0000-26100-5600000-120 CUSTODIAL SUPPLIES - EDDINGTON       | 7,000.00             | 189.16               | 1,923.13             | 5,076.87   | (2.96)%              | 5,284.14             |
| 524. 1000-0000-26100-5600000-130 CUSTODIAL SUPPLIES - HOLDEN          | 7,000.00             | 0.00                 | 4,047.65             | 2,952.35   | 0.00%                | 2,952.35             |
| 525. 1000-0000-26100-5622000-110 ELECTRICITY - HOLBROOK               | 62,000.00            | 5,338.30             | 9,222.39             | 52,777.61  | 85.12%               | 0.00                 |
| 526. 1000-0000-26100-5622000-120 ELECTRICITY - EDDINGTON              | 34,000.00            | 0.00                 | 3,604.48             | 30,395.52  | 89.39%               | 0.00                 |
| 527. 1000-0000-26100-5622000-130 ELECTRICITY - HOLDEN                 | 37,000.00            | 0.00                 | 4,345.46             | 32,654.54  | 88.25%               | 0.00                 |
| 528. 1000-0000-26100-5624024-110 HEATING FUEL - HOLBROOK              | 46,000.00            | 2,797.34             | 2,797.34             | 43,202.66  | 0.00%                | 43,202.66            |
| 529. 1000-0000-26100-5624024-120 HEATING FUEL - EDDINGTON             | 33,000.00            | 4,185.22             | 4,185.22             | 28,814.78  | 0.00%                | 28,814.78            |
| 530. 1000-0000-26100-5624024-130 HEATING FUEL - HOLDEN                | 35,000.00            | 2,557.85             | 2,557.85             | 32,442.15  | 0.00%                | 32,442.15            |
| 531. 1000-0000-26200-5430010-110 SAFETY & SECURITY - HOLBROOK         | 100,000.00           | 0.00                 | 0.00                 | 100,000.00 | 100.00%              | 0.00                 |
| 532. 1000-0000-26200-5430010-120 SAFETY & SECURITY - EDDINGTON        | 1,000.00             | 614.71               | 614.71               | 385.29     | 0.00%                | 385.29               |
| 533. 1000-0000-26200-5430010-130 SAFETY & SECURITY - HOLDEN           | 1,000.00             | 614.72               | 614.72               | 385.28     | 0.00%                | 385.28               |
| 534. 1000-0000-26200-5430033-130 MAINTENANCE PROJECTS - HOLDEN        | 6,250.00             | 0.00                 | 0.00                 | 6,250.00   | 100.00%              | 0.00                 |
| 535. 1000-0000-26200-5600010-110 MAINTENANCE SUPPLIES - HOLBROOK      | 8,000.00             | 102.75               | 470.67               | 7,529.33   | 89.32%               | 383.34               |
| 536. 1000-0000-26200-5600010-120 MAINTENANCE SUPPLIES - EDDINGTON     | 5,000.00             | 102.75               | 470.67               | 4,529.33   | 88.92%               | 83.33                |
| 537. 1000-0000-26200-5600010-130 MAINTENANCE SUPPLIES - HOLDEN        | 5,000.00             | 102.75               | 470.67               | 4,529.33   | 82.92%               | 383.33               |
| 538. 1000-0000-26200-5600012-110 SUPPLIES - ATHLETIC FIELDS - HOLBROO | 8,000.00             | 604.53               | 604.53               | 7,395.47   | 0.00%                | 7,395.47             |
| 539. 1000-0000-26200-5600012-120 SUPPLIES - ATHLETIC FIELDS - EDDINGT | 6,200.00             | 458.93               | 458.93               | 5,741.07   | 0.00%                | 5,741.07             |
| 540. 1000-0000-26200-5600012-130 SUPPLIES - ATHLETIC FIELDS - HOLDEN  | 1,200.00             | 388.40               | 388.40               | 811.60     | 0.00%                | 811.60               |
| 541. 1000-0000-26200-5605000-110 MAINT. EQUIPMENT - HOLBROOK          | 2,809.41             | 0.00                 | 0.00                 | 2,809.41   | 100.00%              | 0.00                 |

# MSAD63

## FY25 Financial Statement

| Account Number / Description  | Adopted Budget        | Current Period       | Reported Period      | Bal Remg              | Percent Remaining    | Encumbrances         |
|---|-----------------------|----------------------|----------------------|-----------------------|----------------------|----------------------|
|   | 7/1/2025 - 6/30/2026  | 9/1/2025 - 9/30/2025 | 7/1/2025 - 6/30/2026 |                       | 7/1/2025 - 6/30/2026 | 7/1/2025 - 6/30/2026 |
| 542. 1000-0000-26200-5605000-120 MAINT. EQUIPMENT - EDDINGTON       | 150.00                | 0.00                 | 0.00                 | 150.00                | 100.00%              | 0.00                 |
| 543. 1000-0000-26200-5605000-130 MAINT. EQUIPMENT - HOLDEN          | 8,862.07              | 0.00                 | 8,862.07             | 0.00                  | 0.00%                | 0.00                 |
| 544. 1000-0000-26200-5626026-900 MAINTENANCE FUEL                   | 2,600.00              | 0.00                 | 154.86               | 2,445.14              | 94.04%               | 0.00                 |
| 545. 1000-0000-51000-5834000-950 DEBT SERVICE-LOCAL&STATE           | 137,000.00            | 0.00                 | 0.00                 | 137,000.00            | 100.00%              | 0.00                 |
| <b>Subtotal Facilities</b>  | <b>\$1,319,106.23</b> | <b>\$72,248.54</b>   | <b>\$265,723.41</b>  | <b>\$1,053,382.82</b> | <b>64.02%</b>        | <b>\$208,870.09</b>  |
| <b><u>Transportation</u></b>  |                       |                      |                      |                       |                      |                      |
| 546. 1000-0000-26500-5622020-900 Utilities-Bus Garage               | 9,300.00              | 0.00                 | 180.76               | 9,119.24              | 98.05%               | 0.00                 |
| 547. 1000-0000-27000-5118040-900 TRANSPORTATION - SALARIES & WAGES  | 165,706.55            | 16,884.74            | 28,728.10            | 136,978.45            | 82.66%               | 0.00                 |
| 548. 1000-0000-27000-5118050-900 TRANSPORTATION - MAINTENANCE WAC   | 61,942.40             | 3,976.63             | 17,693.63            | 44,248.77             | 71.43%               | 0.00                 |
| 549. 1000-0000-27000-5208010-900 TRANSPORTATION - HEALTH            | 68,399.00             | 5,006.10             | 11,889.46            | 56,509.54             | 82.61%               | 0.00                 |
| 550. 1000-0000-27000-5208015-900 TRANSPORTATION - DENTAL            | 3,000.00              | 243.82               | 483.00               | 2,517.00              | 83.90%               | 0.00                 |
| 551. 1000-0000-27000-5208020-900 TRANSPORTATION - OASDI/MCR         | 10,500.00             | 1,578.87             | 3,502.64             | 6,997.36              | 66.64%               | 0.00                 |
| 552. 1000-0000-27000-5208040-900 TRANSPORTATION - UNEMPLOYEMENT     | 1,660.00              | 17.55                | 29.31                | 1,630.69              | 98.23%               | 0.00                 |
| 553. 1000-0000-27000-5208050-900 TRANSPORTATION - WORKERS COMP.     | 24,000.00             | 0.00                 | 140.00               | 23,860.00             | 99.37%               | 10.00                |
| 554. 1000-0000-27000-5238040-900 RETIREMENT                         | 0.00                  | 100.24               | 155.48               | (155.48)              |                      | 0.00                 |
| 555. 1000-0000-27000-5238050-900 RETIREMENT                         | 0.00                  | 167.40               | 695.46               | (695.46)              |                      | 0.00                 |
| 556. 1000-0000-27000-5445200-900 Trash                              | 914.04                | 0.00                 | 0.00                 | 914.04                | 100.00%              | 0.00                 |
| 557. 1000-0000-27000-5500000-900 OTHER PURCHASED TRANS. EXPENSE     | 26,475.27             | 4,224.00             | 10,990.26            | 15,485.01             | 36.98%               | 5,692.80             |
| 558. 1000-0000-27000-5500010-900 PHYSICALS & RANDOM DRUG TESTING    | 4,075.00              | 0.00                 | 0.00                 | 4,075.00              | 100.00%              | 0.00                 |
| 559. 1000-0000-27000-5520000-900 FLEET INSURANCE                    | 14,622.00             | 0.00                 | 15,033.00            | (411.00)              | (2.81)%              | 0.00                 |
| 560. 1000-0000-27000-5532020-900 TELEPHONE - BUS GARAGE             | 1,680.00              | 150.00               | 458.95               | 1,221.05              | 0.01%                | 1,220.81             |
| 561. 1000-0000-27000-5626000-900 FLEET FUEL                         | 80,000.00             | 0.00                 | 669.13               | 79,330.87             | 99.16%               | 0.00                 |
| 562. 1000-0000-27000-5670000-900 VEHICLE PARTS & SUPPLIES           | 82,725.00             | 5,370.23             | 15,980.69            | 66,744.31             | 47.93%               | 27,090.03            |
| 563. 1000-0000-27000-5831000-900 PURCHASE OF VEHICLES - PRINC & INT | 31,000.00             | 27,225.23            | 27,225.23            | 3,774.77              | 12.17%               | 0.00                 |
| 564. 1000-0000-27001-5118000-900 Trans Dir Wages                    | 22,281.00             | 3,368.46             | 9,044.61             | 13,236.39             | 59.40%               | 0.00                 |
| 565. 1000-0000-27001-5208000-900 OTHER EE BENEFITS                  | 2,109.00              | 255.45               | 826.91               | 1,282.09              | 60.31%               | 10.00                |
| 566. 1000-0000-27001-5208010-900 REGULAR E/E - HEALTH               | 5,339.00              | 0.00                 | 0.00                 | 5,339.00              | 100.00%              | 0.00                 |
| 567. 1000-0000-27001-5208015-900 REGULAR E/E - DENTAL               | 170.00                | 0.00                 | 0.00                 | 170.00                | 100.00%              | 0.00                 |
| 568. 1000-0000-27001-5238000-900 RETIREMENT CONT./REGULAR E/E       | 668.00                | 0.00                 | 0.00                 | 668.00                | 100.00%              | 0.00                 |

# MSAD63

## FY25 Financial Statement

| Account Number / Description   | Adopted Budget<br>7/1/2025 -<br>6/30/2026 | Current Period<br>9/1/2025 -<br>9/30/2025 | Reported Period<br>7/1/2025 -<br>6/30/2026 | Bal Remg               | Percent<br>Remaining<br>7/1/2025 -<br>6/30/2026 | Encumbrances<br>7/1/2025 -<br>6/30/2026 |
|--|---|---|--|------------------------|---|---|
| 569. 1000-0000-27001-5268000-900 PFML Support Staff                  | 223.00                                    | 16.69                                     | 44.89                                      | 178.11                 | 79.86%  | 0.00                                    |
| 570. 1000-0000-27500-5118000-900 S/E TRANSPORTAION - WAGES           | 54,311.00                                 | 2,697.12                                  | 6,735.99                                   | 47,575.01              | 87.59%  | 0.00                                    |
| 571. 1000-0000-27500-5208000-900 S/E TRANSPORTATION - BENEFITS       | 0.00                                      | 200.56                                    | 493.59                                     | (493.59)               |   | 0.00                                    |
| 572. 1000-0000-27500-5208010-900 S/E TRANSPORTATION - HEALTH         | 15,780.00                                 | 1,088.28                                  | 3,118.14                                   | 12,661.86              | 80.23%  | 0.00                                    |
| 573. 1000-0000-27500-5208015-900 S/E TRANSPORTATION - DENTAL         | 0.00                                      | 0.00                                      | 18.70                                      | (18.70)                |   | 0.00                                    |
| 574. 1000-0000-27500-5238000-900 S/E TRANSPORTATION - RETIREMENT     | 0.00                                      | 0.00                                      | 10.95                                      | (10.95)                |   | 0.00                                    |
| <b>Subtotal Transportation</b>                                       | <b>\$686,880.26</b>                       | <b>\$72,571.37</b>                        | <b>\$154,148.88</b>                        | <b>\$532,731.38</b>    | <b>72.60%</b>                                   | <b>\$34,023.64</b>                      |
| <b><u>All Other</u></b>  |   |   |  |                        |   |   |
| 575. 1000-0000-00000-5900000-900 CONTINGENCY FUND                    | 50,000.00                                 | 11,540.64                                 | 11,540.64                                  | 38,459.36              | 76.91%  | 0.00                                    |
| <b>Subtotal All Other</b>  | <b>\$50,000.00</b>                        | <b>\$11,540.64</b>                        | <b>\$11,540.64</b>                         | <b>\$38,459.36</b>     | <b>76.91%</b>                                   | <b>\$0.00</b>                           |
| <b>Total Expenses</b>  | <b>\$12,694,262.79</b>                    | <b>\$597,161.61</b>                       | <b>\$1,718,791.69</b>                      | <b>\$10,975,471.10</b> | <b>83.84%</b>                                   | <b>\$332,273.07</b>                     |
| <b>Net Revenue over Expense</b>                                      | <b>\$0.00</b>                             | <b>\$597,161.61</b>                       | <b>\$751,495.83</b>                        | <b>\$(751,495.83)</b>  | <b>---</b>                                      | <b>\$332,273.07</b>                     |
| <b>TOTAL ALL EXPENSES</b>  | <b>\$0.00</b>                             | <b>\$0.00</b>                             | <b>\$0.00</b>                              | <b>\$0.00</b>          | <b>---</b>                                      | <b>\$0.00</b>                           |
| <b><u>Adult Education</u></b>  |   |   |  |                        |   |   |
| 576. 1500-0000-10000-4111400-910 ADULT EDUCATION - LOCAL ONLY - CLIF | (537.24)                                  | 0.00                                      | (44.80)                                    | (492.44)               | 91.66%  | 0.00                                    |
| 577. 1500-0000-10000-4111400-920 ADULT EDUCATION - LOCAL ONLY - EDD  | (1,215.52)                                | 0.00                                      | (100.23)                                   | (1,115.29)             | 91.75%  | 0.00                                    |
| 578. 1500-0000-10000-4111400-930 ADULT EDUCATION - LOCAL ONLY- HOLI  | (1,987.24)                                | 0.00                                      | (165.60)                                   | (1,821.64)             | 91.66%  | 0.00                                    |
| 579. 1500-6300-10000-5564000-400 UTC - REGIONAL ADULT ASSESSMENT     | 3,740.00                                  | 0.00                                      | 0.00                                       | 3,740.00               | 100.00%   | 0.00                                    |
| <b>Subtotal Adult Education</b>                                      | <b>\$0.00</b>                             | <b>\$0.00</b>                             | <b>\$(310.63)</b>                          | <b>\$310.63</b>        | <b>---</b>                                      | <b>\$0.00</b>                           |
| <b><u>Transportation for Other Units</u></b>                         |   |   |  |                        |   |   |
| 580. 1000-0000-27000-5118040-230 DRIVER WAGES                        | 0.00                                      | 163.00                                    | 290.50                                     | (290.50)               |   | 0.00                                    |
| 581. 1000-0000-27000-5202040-230 UNEMPLOYMENT                        | 0.00                                      | 0.22                                      | 0.22                                       | (0.22)                 |   | 0.00                                    |
| 582. 1000-0000-27000-5218020-230 FICA/MEDI                           | 0.00                                      | 12.26                                     | 21.81                                      | (21.81)                |   | 0.00                                    |
| <b>Sub Total Trans to Other Units</b>                                | <b>\$0.00</b>                             | <b>\$175.48</b>                           | <b>\$312.53</b>                            | <b>\$(312.53)</b>      | <b>---</b>                                      | <b>\$0.00</b>                           |

**MSAD63**  
**FY25 Financial Statement**

| Account Number / Description | Adopted Budget          | Current Period          | Reported Period         | Bal Remg | Percent Remaining       | Encumbrances            |
|------------------------------|-------------------------|-------------------------|-------------------------|----------|-------------------------|-------------------------|
|                              | 7/1/2025 -<br>6/30/2026 | 9/1/2025 -<br>9/30/2025 | 7/1/2025 -<br>6/30/2026 |          | 7/1/2025 -<br>6/30/2026 | 7/1/2025 -<br>6/30/2026 |

# MSAD63

## Income Statement Hot Lunch

Report # 35060

Statement Code: hot lunch

| Account Number / Description                                 | Current Period          | Reported Period         | Encumbrances            |
|--|-------------------------|-------------------------|-------------------------|
|  | 9/1/2025 -<br>9/30/2025 | 7/1/2025 -<br>6/30/2026 | 7/1/2025 -<br>6/30/2026 |
| <b>10000 REGULAR INSTRUCTION</b>                             |                         |                         |                         |
| 6000-0000-10000-4161000-950 SCHOOL LUNCH - DAILY CASH SALES  | 0.00                    | (69.50)                 | 0.00                    |
| 6000-0000-10000-4325000-950 HOT LUNCH - STATE SUBSIDY        | 0.00                    | (8,415.27)              | 0.00                    |
| 6000-0000-10000-4455100-950 SCHOOL LUNCH SUBSIDY-FED REG     | 0.00                    | (879.75)                | 0.00                    |
| 6000-0000-10000-4455200-950 CNP Fed meal Reimb Red           | 0.00                    | (828.12)                | 0.00                    |
| 6000-0000-10000-4455300-950 CNP Fed Lunch FR                 | 0.00                    | (3,710.92)              | 0.00                    |
| 6000-0000-10000-4455400-950 CNP Fed Breakfast                | 0.00                    | (1,568.58)              | 0.00                    |
| <b>TOTAL 10000 REGULAR INSTRUCTION</b>                       | <b>\$0.00</b>           | <b>\$(15,472.14)</b>    | <b>\$0.00</b>           |
| <b>31000 FOOD SERVICE OPERATIONS</b>                         |                         |                         |                         |
| 6000-0000-31000-5118000-950 HOT LUNCH - WAGES                | 7,904.86                | 17,743.60               | 0.00                    |
| 6000-0000-31000-5202040-950 UNEMPLOYMENT                     | 0.00                    | 2.82                    | 0.00                    |
| 6000-0000-31000-5208000-950 HOT LUNCH - BENEFITS             | 0.00                    | 100.00                  | 0.00                    |
| 6000-0000-31000-5208010-950 REGULAR E/E - HEALTH             | 2,616.84                | 9,201.44                | 0.00                    |
| 6000-0000-31000-5208015-950 REGULAR E/E - DENTAL             | 35.42                   | 123.97                  | 0.00                    |
| 6000-0000-31000-5208020-950 REGULAR E/E - OASDI/MCR          | 105.89                  | 237.01                  | 0.00                    |
| 6000-0000-31000-5218000-950 FICA/MEDI                        | 452.79                  | 1,013.44                | 0.00                    |
| 6000-0000-31000-5238000-950 RETIREMENT CONT./REGULAR E/E     | 94.50                   | 149.97                  | 0.00                    |
| 6000-0000-31000-5268000-950 PFML Support Staff               | 36.51                   | 81.73                   | 0.00                    |
| 6000-0000-31000-5630000-950 HOT LUNCH - FOOD PURCHASES       | 5,408.20                | 5,408.20                | 0.00                    |
| 6000-0000-31000-5630030-950 SNACK                            | 0.00                    | 0.00                    | 1,000.00                |
| 6000-0000-31000-5631000-950 HOT LUNCH - NON - FOOD PURCHASES | 874.77                  | 3,925.01                | 0.00                    |
| <b>TOTAL 31000 FOOD SERVICE OPERATIONS</b>                   | <b>\$17,529.78</b>      | <b>\$37,987.19</b>      | <b>\$1,000.00</b>       |
| <b>GRAND TOTAL</b>   | <b>\$17,529.78</b>      | <b>\$22,515.05</b>      | <b>\$1,000.00</b>       |

# DRAFT

**School Consolidation Advisory Committee  
Meeting Minutes  
July 21, 2025  
Location: Holden Elementary School  
5:30pm**

**Board Members in Attendance:** *Scott Walton, Linda Graban, Brittany Wood, Rachel Downs, and Heather Grass*

**Others in Attendance:** *James Stoneton, Interim Superintendent and Community Members*

**Call meeting to order:** 5:30pm with a flag salute and moment of silence

**Scope of Advisory Committee:** (Subject to Policy BDF – Advisory Committees)

- Review of what the composition of this committee will be, timelines, scope of the committee, and purpose of the committee.
- Open discussion and suggestions gathered from the Board and public in attendance.
- Scope and Purpose will be drafted and submitted to the Board for approval at the July 28, 2025 Board meeting.

**Next Meeting Date:** August 18, 2025 at 6:00pm, Holbrook Middle School

**Adjournment:** 6:50pm

**DRAFT**

**Advisory Committee on Efficiency (ACE)  
Meeting Minutes  
August 18, 2025  
Location: Holbrook Middle School**

**Members Present:** *Linda Graban, Heather Grass, Amy Hart, Trish Eldridge, Chip Haskell, Brenda DeRoche, Becca Jordan, Bernadene Brownell, Karen Quimby, Jake Burtchell, Krista Vining-Means, Julianna Prentiss, Thomas Smith, James Spencer, and Audra Leland*

**Members Excused Absent:** *David McCluskey and Jade Oakman*

**Others Present:** *Scott Walton, RSU 63 School Board Chair and James Stoneton, RSU 63 Interim Superintendent*

**Call Meeting to Order**

Scott Walton, RSU 63 Board Chair, called the meeting to order at 6:00pm, followed by the flag salute.

**Announcement and Welcome of Members**

**School Board Member from Each Town**

*Clifton – Linda Graban  
Eddington – Heather Grass  
Holden – Amy Hart*

**Appointed resident from each Town Select Board**

*Clifton – Trish Eldridge  
Eddington – David McCluskey  
Holden – Chip Haskell*

**Teacher from Each School**

*Eddington – Brenda DeRoche  
Holden – Becca Jordan  
Holbrook – Bernadene Brownell*

**Parent from each town**

*Clifton – Jade Oakman  
Eddington – Karen Quimby  
Holden – Jake Burtchell*

**RSU 63 Administrator**

*Krista Vining-Means*

**PTG Member**

*Julianna Prentiss*

**Holbrook Rec Member**

*Thomas Smith*

**Special Education Member**

*James Spencer*

**PreK Representative**

*Audra Leland*

**Elect Chair**

Motion by Amy Hart with a second by Krista Vining-Means to elect Chip Haskell ACE Committee Chair.

Discussion: None

**Vote: 14 yes, 1 No; Motion Passed**

**Elect Vice Chair**

Motion by Heather Grass with a second by Linda Graban to elect Karen Quimby as Vice Chair.

Discussion: None

**Vote: 13 Yes, 0 No, 2 Abstained; Motion Passed**

**DRAFT**

**Elect Secretary**

Motion by Amy Hart with a second by James Spencer to elect Jade Oakman as Secretary.

Discussion: None

**Vote: 15 Yes, 0 No; Motion Passed**

**Review Scope and Sequence Timeline**

The committee reviewed the scope and sequence timeline. Determined that each timeline for progress reports should have a sub-committee with the survey being completed by the next meeting.

Motion by Karen Quimby with a second by Amy Hart to develop sub-committees with no more than 5 people.

Discussion: None

**Vote: 15 Yes; 0 No; Motion Passed**

**Sub-Committees**

- 1. Survey Sub-Committee:** *Linda Graban, Karen Quimby, Brenda DeRoche, Julianna Prentiss, and Trish Eldridge*
- 2. Transportation Sub-Committee:** *Audra Leland, Heather Grass, Becca Jordan, James Spencer, and Linda Graban*
- 3. Student Related Costs & Programs Sub-Committee:** *Krista Vining-Means, Amy Hart, Brenda DeRoche, Bernadene Brownell, and Trish Eldridge*

**Next Meeting Date**

Motion by Karen Quimby with a second by Julianna Prentiss to schedule a meeting on September 3, 2025 at 6:00pm, Holbrook Middle School

Discussion: None

**Vote: 15 Yes; 0 No; Motion Passed**

Motion by Karen Quimby with a second by Heather Grass to schedule a meeting on September 29, 2025 at 6:00pm, Holbrook Middle School

Discussion: None

**Vote: 15 Yes; 0 No; Motion Passed**

**Adjournment:** 7:01pm

# DRAFT

**Advisory Committee on Efficiency (ACE)  
Meeting Minutes  
September 3rd, 2025  
Location: Holbrook Middle School**

**Members Present:** *Linda Graban, Heather Grass, Amy Hart, Trish Eldridge, Chip Haskell, Brenda DeRoche, Becca Jordan, Bernadene Brownell, Karen Quimby, Jake Burtchell, Julianna Prentiss, James Spencer, Audra Leland, David McCluskey, Jade Oakman*  
**Absent members:** *Krista Vining-Means, Thomas Smith*

**Others Present:** Scott Walton, RSU 63 School Board Chair and James Stoneton, RSU 63 Interim Superintendent

## **Call Meeting to Order**

Scott Walton, RSU 63 Board Chair, called the meeting to order at 6:00pm, followed by the flag salute.

## **Advisory Committee Survey**

Motion by Julianna Prentiss with a second by Linda Graban to distribute survey to the community

Discussion: Electronic and paper copy to be available, end date 9/17/2025

Vote: 15 yes, 0 No; Motion Passed

## **8/18/2025 minutes**

Motion by Karen Quimby to approve minutes with a second by Linda Graban

Discussion: None

Vote: 15 Yes, 0 No, Motion Passed

## **Sub-Committees**

Motion by Karen Quimby to have up to 5 people on the facilities update committee with a second by Julianna Prentiss

Vote: 15 yes- No-0 motion passed

1. Facilities Update Sub-Committee: Jade Oakman, Julianna Prentiss, Audra Leland, Scott Walton, Chip Haskell

Motion by Karen Quimby to have up to 5 members on a Operational Costs Sub-Committee- Julianna Prentiss Second.

Vote:15-yes- 0-No motion passed

2. Operational Costs Sub-Committee: Julianna Prentiss, Jade Oakman, David McCluskey

Discussion: Sub-Committees may schedule meetings as frequently as needed- emails previously distributed to all committee members

## **Survey**

Discussion of a possible second survey to be done- Need to evaluate costs

Discussion Of School Priority List with the state- application VS not- due to cost and the timeline that this can take. James Stoneton to gather information and report back to the committee once he gathers the information

**Next Meeting Date**

Motion by Jade Oakman with a second by Amy Hart to hold meetings the 4th Monday of every month, @ 5:30pm

Discussion: If needed we can discuss to add more meetings within 48 hour notice of such meetings being held

Vote: 14 Yes; 1 abstained- Motion Passed

Previously Scheduled meeting on September 29th 2025 will stay as scheduled and voted on previously

**DRAFT**

**Advisory Committee on Efficiency (ACE)**

**Meeting Minutes**

**September 29th, 2025**

**Location: Holbrook Middle School**

**Members Present:** *Linda Graban, Heather Grass, Amy Hart, Trish Eldridge, Chip Haskell, Brenda DeRoche, Becca Jordan, Bernadene Brownell, Karen Quimby, Jake Burtchell, Julianna Prentiss, Thomas Smith, James Spencer, Audra Leland, David McCluskey, Jade Oakman, Krista Vining-Means*

**Absent members:** *N/A*

**Others Present:** Scott Walton, RSU 63 School Board Chair, Sheila Caldwell Interim Superintendent, James Stoneton, AOS #47 Superintendent

**Call Meeting to Order**

Chip Haskell, ACE committee Chair, called the meeting to order at 6:00pm, followed by the flag salute

**09/03/2025 minutes approval**

Motion by Karen Quimby to approve minutes with a second by Jade Oakman

Discussion: None

Vote: 17 Yes, 0 No, Motion Passed

**Survey response Review and Discussion**

Motion by Juliana Prentiss with a second by Linda Graban to do a deeper dive into the responses for each of the bullet points and bring the final survey reports to the next meeting

Discussion- second Survey in the future? Final Report will be available at the next meeting

Vote 17 Yes, 0 no, motion passed

**Sub-Committees**

*Transportation Sub Committee-*

Contacted Cyr Bus, working on gathering information on current salaries for current bus drivers, efficiency of routes, map created with current addresses of students for our routes

*Operational Cost Sub Committee-* update- Requested a detailed breakdown of costs from the Superintendents office with a goal of having the information within 90 days, will update once we have the information needed

*Facilities Sub Committee-* Update

Working on contacting companies with boiler costs, need to look into what we are grandfathered into regarding codes- and waiting for floor plans to be completed

*Student Related Costs-* Update

Will update at the next meeting- have not met yet

Other- James Stoneton attended his last meeting, Sheila Caldwell is the new interim superintendent for RSU #63

**Next Meeting Date**

October 27th 2025 @ 5:30 at Eddington Elementary School

**Adjournment**



# CARPENTER ASSOCIATES

## CONSULTING ENGINEERS

October 3, 2025

James Stoneton  
Interim Superintendent of Schools  
RSU 63  
202 Kidder Hill Road  
Holden, Maine 04429

**Re: Main Office Renovation - Holbrook Middle School**

Dear James:

After discussions with Ryan Porter regarding potential costs and options for proposed entrance/office renovations at the Holbrook Middle School, we have developed a construction estimate and proposed floor plan sketch for the interior renovations only. The work would include the following: renovate proposed classroom into 3 offices, principal, secretary, and conference room. This new space would include adding a new set of doors for new vestibule, new entry doors, secure transaction window for secretary to vet visitors, new finishes, and mechanical and electrical would need to be modified.

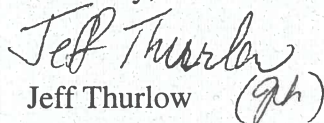
The construction estimate is as follows.

|                    |                  |
|--------------------|------------------|
| Demolition         | \$ 15,000        |
| New walls, GWB     | \$ 25,000        |
| Paint              | \$ 5,000         |
| Flooring (LVL)     | \$ 15,000        |
| Ceiling            | \$ 15,000        |
| Doors (7)          | \$ 20,000        |
| Transaction Window | \$ 5,000         |
| Cabinets/Casework  | \$ 10,000        |
| Masonry            | \$ 5,000         |
| Mechanical         | \$125,000        |
| Plumbing           | \$ 5,000         |
| Electrical         | \$ 75,000        |
| Fire Alarms        | \$ 5,000         |
|                    | <u>\$325,000</u> |

Attached is an existing floor plan and a concept showing our understanding of your request. We assume existing systems are adequate (i.e. heating, power, etc.).

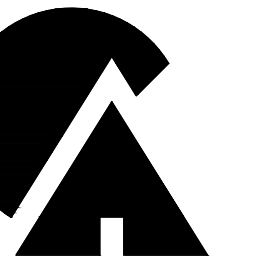
Please call with any questions or concerns.

Sincerely,

  
Jeff Thurlow (JH)

Cc: Ryan Porter

2025113



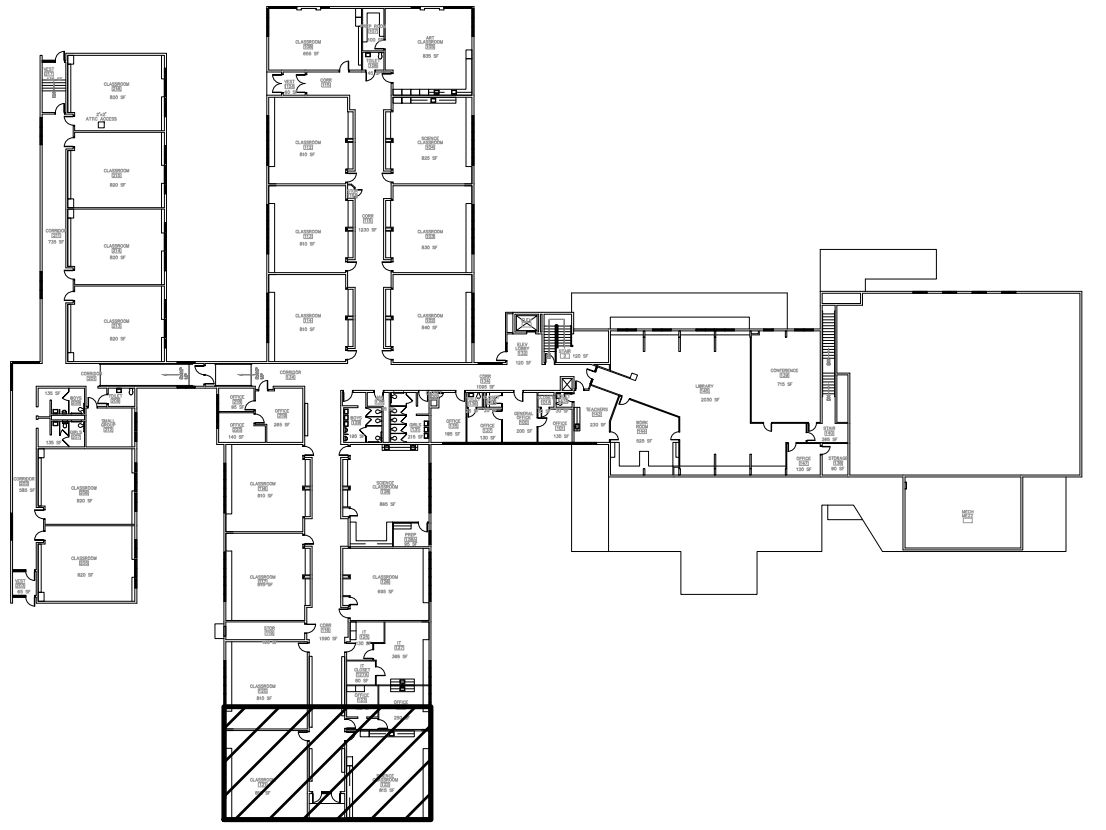
**CARPENTER ASSOCIATES**  
 CONSULTING ENGINEERS  
 687 STILLWATER AVENUE • OLD TOWN • MAINE 04468

| REVISIONS |      |    |             |
|-----------|------|----|-------------|
| NO.       | DATE | BY | DESCRIPTION |
|           |      |    |             |
|           |      |    |             |
|           |      |    |             |
|           |      |    |             |

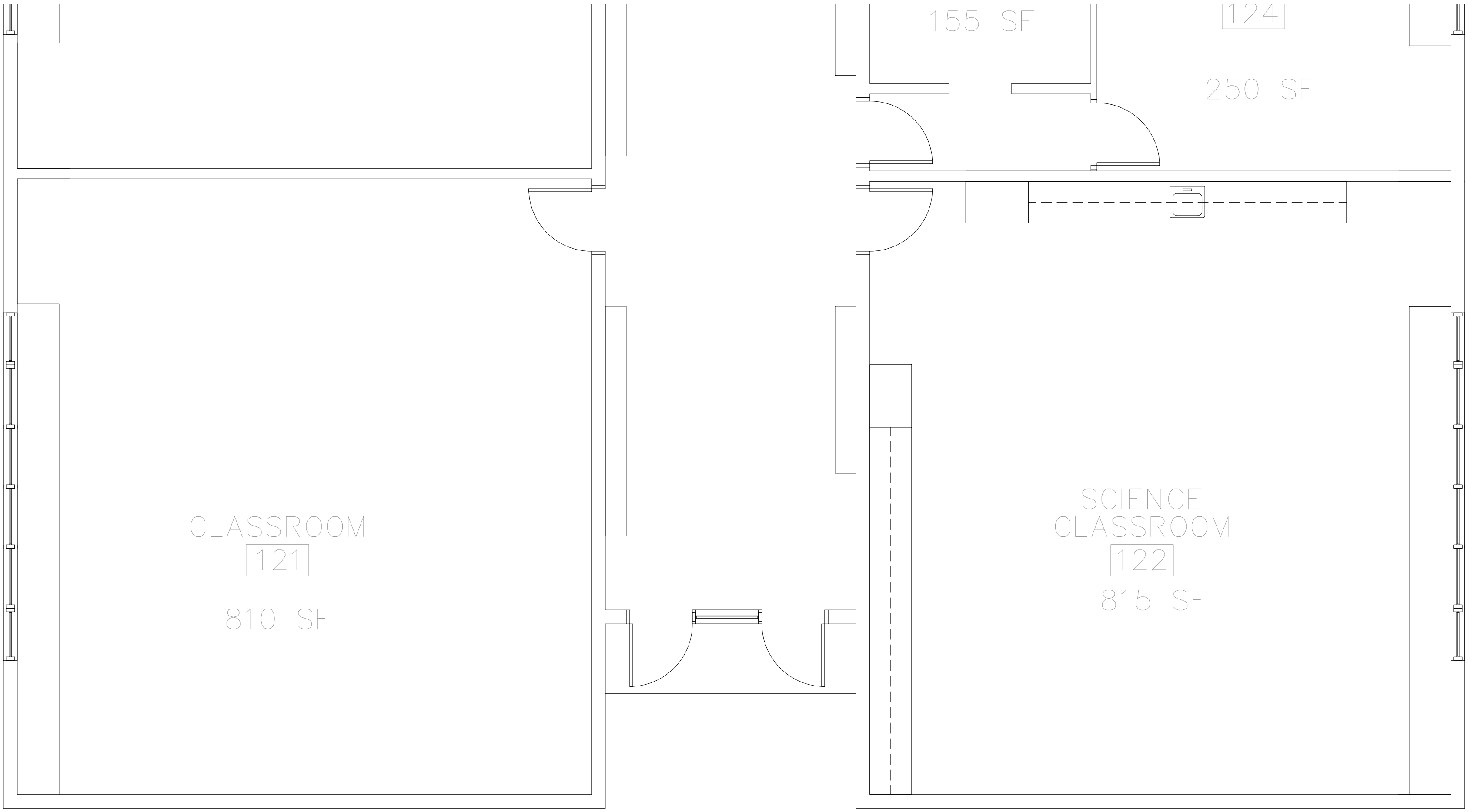
RSU #63 - HOLBROOK MIDDLE SCHOOL  
**BUILDING ENTRANCE RENOVATION**  
 HOLDEN, MAINE  
**EXISTING UPPER LEVEL FLOOR PLAN**

Drawn: JE  
 Checked: RB  
 Scale: AS NOTED  
 Date: 09-26-2025  
 Project No:  
 2025113  
 Sheet Number:

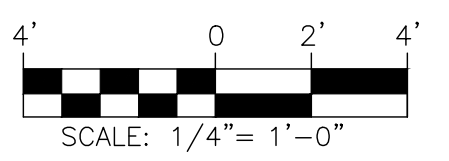
**1**



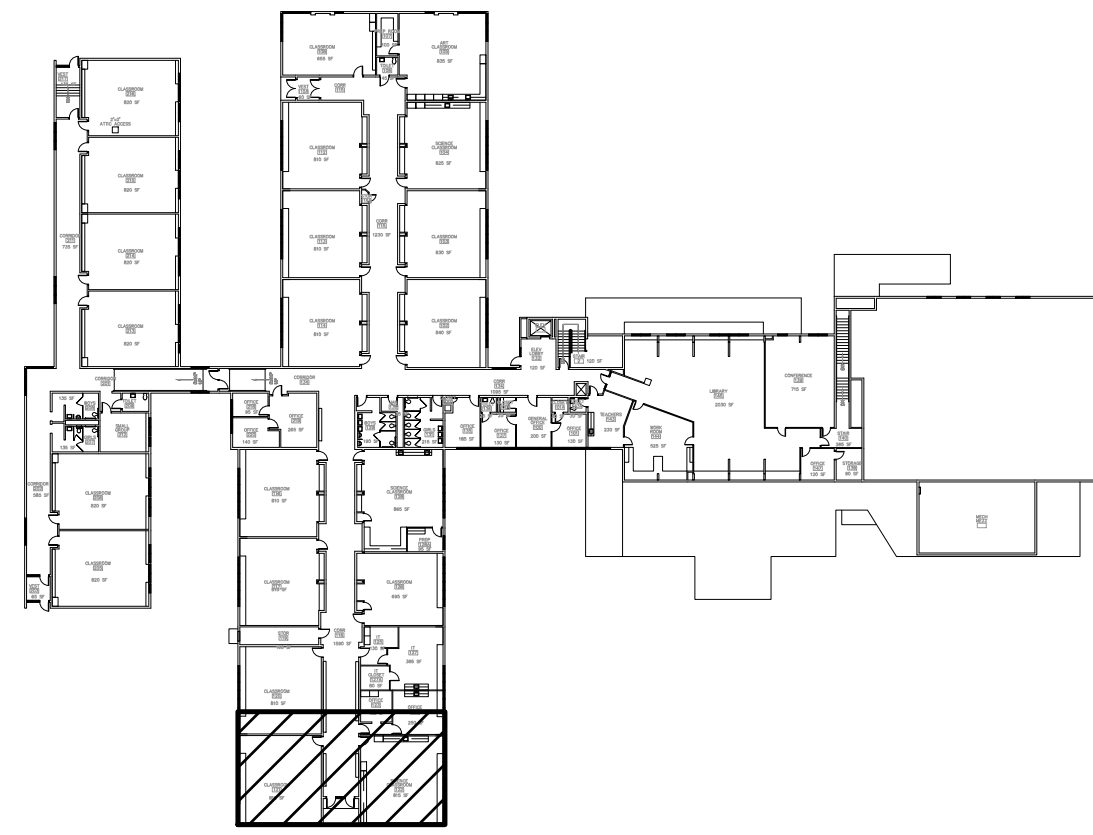
KEY PLAN  
 NOT TO SCALE



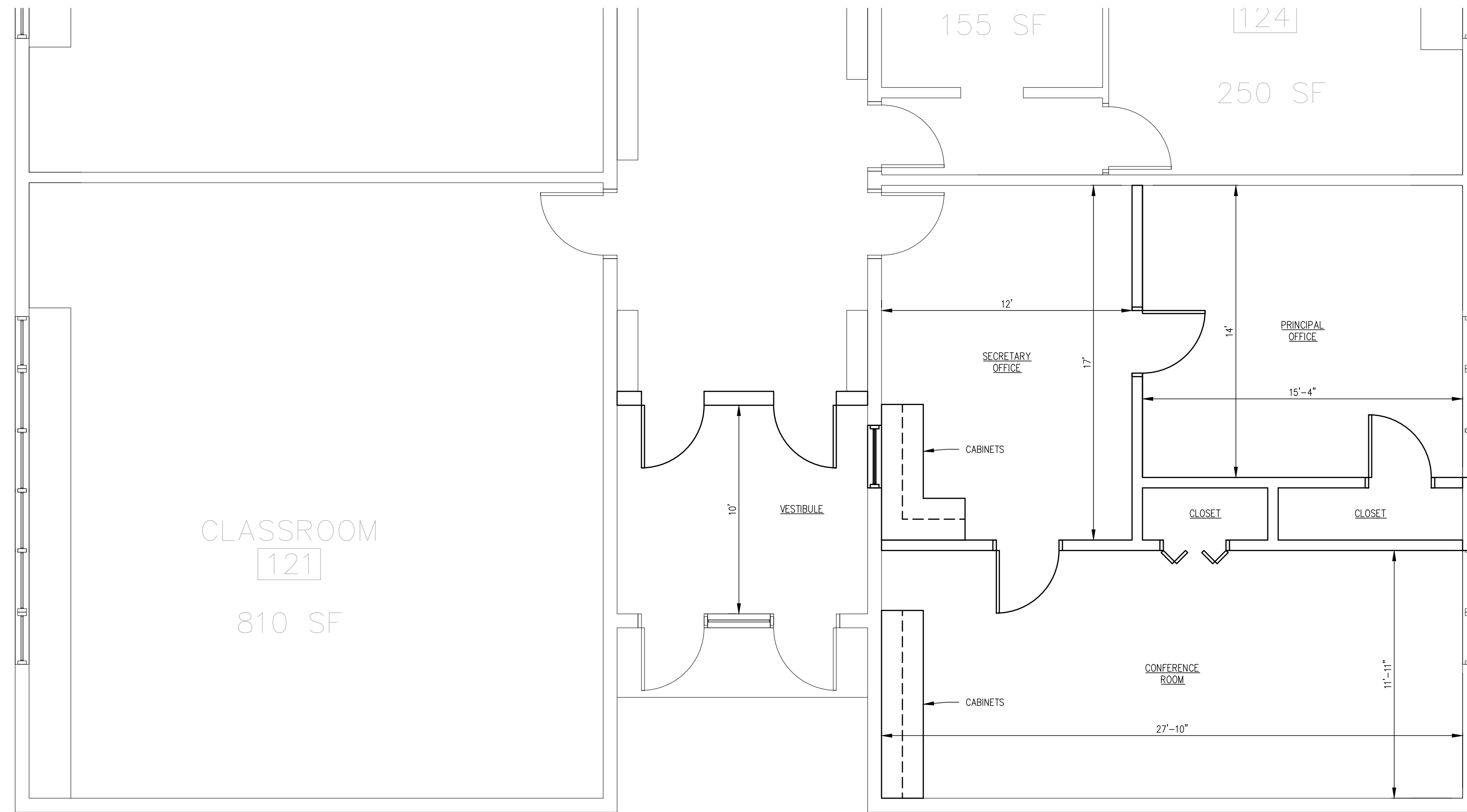
EXISTING UPPER LEVEL FLOOR PLAN  
 SCALE: 1/4" = 1'-0"



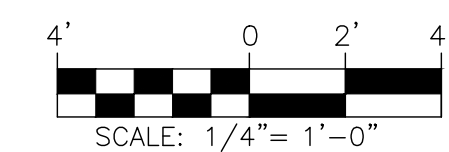
**FOR REVIEW**  
 10-07-2025



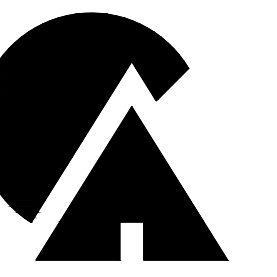
KEY PLAN  
NOT TO SCALE



PROPOSED UPPER LEVEL FLOOR PLAN  
SCALE: 1/4" = 1'-0"



FOR REVIEW  
10-07-2025



**CARPENTER ASSOCIATES**  
CONSULTING ENGINEERS  
687 STILLWATER AVENUE • OLD TOWN • MAINE 04468

| REVISIONS |             |
|-----------|-------------|
| NO.       | DESCRIPTION |
|           |             |
|           |             |
|           |             |
|           |             |
|           |             |

RSU #63 - HOLBROOK MIDDLE SCHOOL  
**BUILDING ENTRANCE RENOVATION**  
HOLDEN, MAINE  
**PROPOSED UPPER LEVEL  
FLOOR PLAN**

Drawn: JE  
Checked: RB  
Scale: AS NOTED  
Date: 09-26-2025  
Project No:  
2025113  
Sheet Number:

**2**