



CURRICULUM COUNCIL

ELEVATE Learning for Every Student, Every Day

CONNECT

ENGAGE

ELEVATE

June 1, 2026 · 3:15–4:45 PM · WSD INSPIRES! 2023–2029

Today's Agenda

01

Welcome & Framework Overview

Michelle S · 3:15 PM

02

2025–26 Recap

Michelle S · 3:20 PM

03

Learner Profile

Gerardo · 3:25 PM

04

2026-27 Looking Ahead

Michelle S · 4:25 PM

05

Closing

Michelle S. · 4:40 PM

01

Welcome

WSD Moving Mountains!

Elevate Learning for Every Student, Every Day!





Take time to celebrate successes!

Meeting Norms

Exploring creatively

Remain Positive



Respect the time we have together



Focus on the topic

Be fully engaged!



Be respectful & actively listen



VISION

Leading the way as the premier Pre K-8th grade school district in Orange County (CA) by providing exceptional and innovative experiences where all learners thrive.

It is our collective responsibility to educate and empower all students to pursue excellence through a distinctive, rigorous, and engaging academic experience.

MISSION



Outcomes of the Day

Framework Overview & Shared Language

1

Revisit the WSD INSPIRES! strategic framework and how our collective work connects to the district's vision for every learner.

2025–26 Year in Review

2

Celebrate and reflect on the progress made this year across curriculum, instruction, and student learning across the district.

Learner Profile Deep Dive

3

Examine the Learner Profile and how it guides instructional decisions and supports every student to thrive.

2026–27 Planning & Priorities

4

Align priorities and resources for the year ahead, including curriculum, professional development, and instructional support.

Clear Next Steps

5

Leave with clear commitments and a shared timeline for Summer and Fall 2026 to sustain momentum for student success.

02

2025–26 Recap

November 3, 2025

**RTI Updates- WIN & FLEX
ELD Assessments
25-26 Christmas Tree- Part 1
RTI Teacher**

December 8, 2025

**Supplemental
Technology-Apps
25-26 “Christmas Tree”- Part
2**

January 12, 2026

**“Christmas Tree”
Focus Groups**

March 9, 2026

**Math Adoption
Peer Assessment
Instructional Calendar &
Pacing
Matrix Morph**

May 4, 2026

**Professional Development
Matrix Morph
Supplemental
Technology-Apps**

June 1, 2026

**Learner Profile
26-27 Priorities**





FOCUS AREAS

5



1

Academic Achievement & Continuous Innovation



2

Student & Staff Safety & Wellness



3

Fiscal Solvency & Organizational Health



4

Community Connections



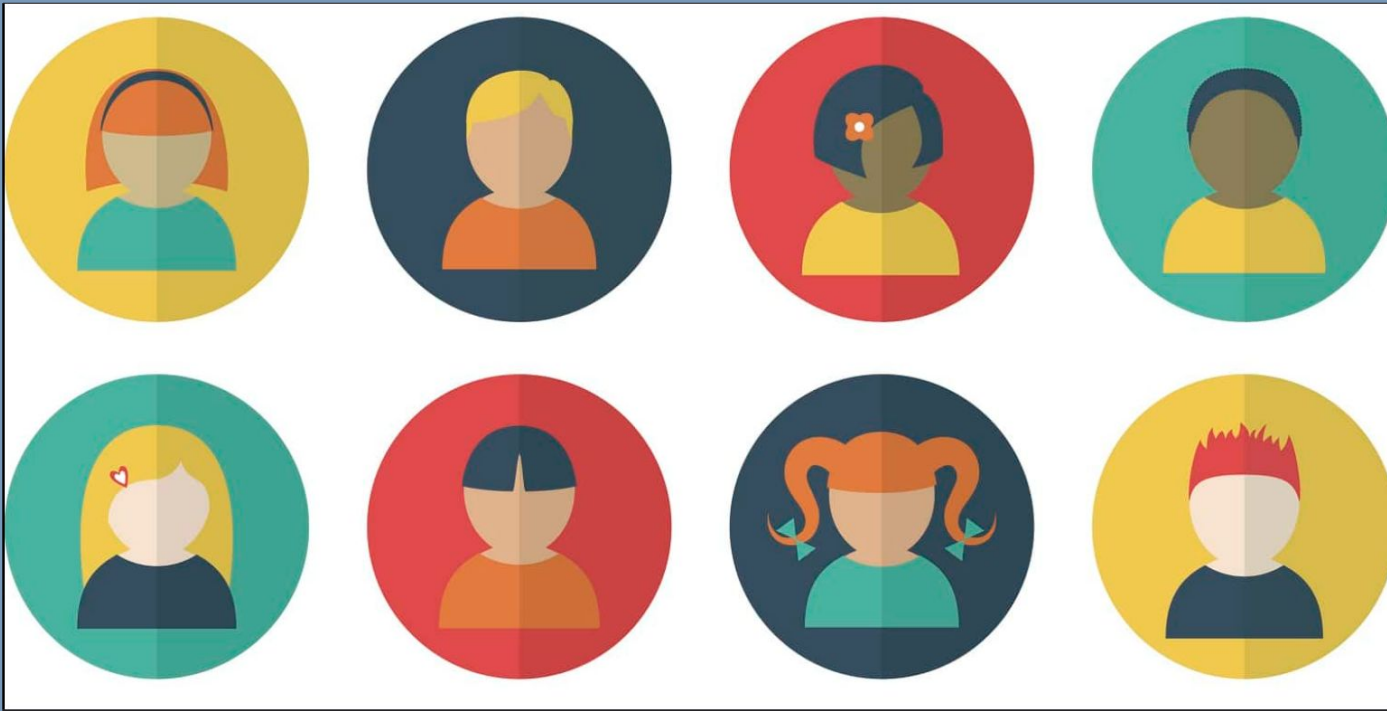
5

Leadership Development & Employee Success



03

Learner Profile



04

2026-27 Looking Ahead

NEXT YEAR — 2026–27

Summer 2026

- Assessment Vetting
Working groups: Teachers
+ Principals/APs
- Math matrix post-adoption
calibration
- Elevate Hub

Fall 2026–27

- 4 required cycles (Gr. 3–8)
- TK–2 continues 5 cycles
- Pear Assessment full
launch — PD Day Aug
2026
- WIN/RTI refined · Tier 1
walks

05

Closing

