



**California Community
Schools Partnership Program**

Implementation Plan

Updated May 2026

**Wilson
Elementary School**

CCSP: IMPLEMENTATION PLAN

School Site Contact Information

Wilson Elementary
Dinuba Unified School District
Adrian Gutierrez, Principal
adrian.gutierrez@dinuba.k12.ca.us
(559) 595-7370

Strategies, Priorities and Goals

Strategy 1: Shared Commitment, Understanding, and Priorities

Part A: Shared Commitment, Understanding and Priorities Built Around the Overarching Values

Dinuba Unified School District's (DUSD) long-standing vision of "ending generational poverty through education" has led to the development of a whole-child learning approach that embodies the four pillars and four cornerstone commitments of the California Community Schools Framework. The CCSP Project builds upon community schools-related initiatives established through a 2019 U.S. Department of Education School Climate Transformation (SCT) Grant. SCT funding allowed DUSD to strategically link the district's Positive Behavioral Interventions and Support (PBIS) framework, Response to Instruction and Intervention (RTI) model, Restorative Justice practices, and school mental health services. As a part of the SCT Project, DUSD faculty, staff, and administrators received training in Trauma Informed Practices in Schools (TIPS), Cognitive Behavioral Intervention for Trauma in Schools (CBITS), and Youth Mental Health First Aid (YMHFA). DUSD also implemented the Second Step Social Emotional Learning curriculum and the Olweus Bullying Prevention Program to help transform school climate. The CCSP Project leverages the strengths of each of these practices, creates greater connections between academic and social-emotional learning programs, better coordinates delivery of wraparound services to promote academic achievement and positive youth development, and continues to develop the four cornerstone commitments.

The Community Schools Coordinator works with Wilson Elementary to plan professional development that is responsive to school needs in the areas of assets-driven and strength-based practice, restorative practices, culturally responsive instruction, and engaging parents and community interest-holders. The Wilson Elementary CCSP Advisory Council (1) tracks CCSP-related professional development participation (2) identifies the school's developmental phase (exploration, emerging, evolving, or excelling) for each of the core commitments, and (3) outlines plans for improving fidelity of implementation.

In addition to developing new professional development opportunities, DUSD incorporates review and discussion of the Community Schools Framework into the LCAP interest-holders engagement process to ensure Implementation Plan alignment with the LCAP Goals, Actions, and Budgeted Expenditures. Current LCAP goals and actions demonstrate shared understanding around the Core Commitments.

LCAP Goal 1: Improve student achievement in English Language Arts and Mathematics so that all students graduate from high school with the skills necessary to enter college or pursue the career of their choice including technology use and integration. (Assets-Driven and Strength-Based Practice)

LCAP Goal 2: Ensure all facilities are in good repair and provide a safe environment for students, staff and parents and promote a sense of pride in all schools. (Racially Just and Restorative School Climates)

LCAP Goal 3: Enhance the social-emotional well-being of students by providing appropriate supports and services, using evidence-based protocols to improve behavioral practices (PBIS) to reduce suspensions and expulsions and improve pupil attendance and truancy rates. (Racially Just and Restorative School Climates and Powerful, Culturally Proficient and Relevant Instruction)

LCAP Goal 4: Increase parent involvement and engagement by expanding the learning opportunities for parents so that they are better equipped to support the learning of their students. (Shared Decision Making and Participatory Practices)

LCAP Goal 5: Improve the rate at which our English Learners acquire the English Language. (Assets-Driven and Strength-Based Practice, Culturally Proficient and Relevant Instruction)

LCAP Goal 6: Improve student achievement in English Language Arts and Mathematics of DUSD Students with Disabilities. (Assets-Driven and Strength-Based Practice, Culturally Proficient and Relevant Instruction)

Part B: Engaging Interest Holders in the Needs and Asset Assessment Process

To prepare for the CCSPP, Dinuba Unified School District (DUSD) established a CCSPP Leadership Team at the district level, led by the Special Student Services Department, to present information about the California Community Schools Framework to school site-level leaders and interest-holders groups. Site-level Advisory Councils were formed at each community school site, featuring a roster of key school leaders, parents, and community representatives. The Leadership Team worked with each Advisory Council to gather school-site information and resources to conduct a needs assessment, asset mapping, and gap analysis to inform the overall CCSPP Project goals and site-level implementation plans. Since the fall of 2022, the CCSPP Leadership Team has partnered with Wilson Elementary leaders to 1) conduct a number of needs assessments, which include administering to students the California Healthy Kids Survey and administering to students, staff, and parents/families PBIS School Climate Surveys; (2) deliver community schools presentations followed by administering a survey to gather interest-holders input; and (3) collect qualitative feedback on the delivery of integrated student supports and extended learning programming during LCAP, ELAC, and SSC meetings. The Leadership Team's needs assessment also included the following:

Data Analysis: The Leadership Team compiled and analyzed numerical metrics, which included evaluating standardized assessment results, attendance information, school climate survey results, and similar resources that lend perspective about the scope or intensity of phenomenon that may warrant intervention. These efforts included analysis of school and community data sources related to education, health, student/family characteristics, attendance, behavioral data, health statistics, and many other domains.

Document Review: The Leadership Team collaborated with Wilson Elementary leaders and interest-holders to gather documentation and artifacts that demonstrate the school's strengths and improvement areas. This included review of the School Accountability Report Card (SARC), PBIS School Climate Surveys, evaluation reports from prior projects (e.g., 2019 U.S. Department of Education School Climate Transformation Grant) related to one or more of the Four Pillars of Community Schools, and Dinuba Unified Local Control and Accountability Plans.

Community Resource Scan: The Leadership Team inventoried community-based service providers operating within Wilson Elementary and district boundaries. This inventory was organized into a "CCSPP Community Schools Partnership Matrix" that outlines the role of each existing partner. In addition to providing a concise summary of active community partnerships, the Matrix also aids in identifying service gaps that may exist or that might contribute to future community schools' efforts.

The results of the needs and asset assessment were shared with the Wilson Elementary CCSPP Advisory Council and presented at district-level community schools planning meetings, which included broad representation of school and community partner representatives. Through these collaborative planning efforts, DUSD and its community school leaders established three CCSPP goals as well as key activities, responsible personnel, budgeted expenditures, and evaluation mechanisms related to each goal.

- (1) Improved coordination and delivery of student support services that result in improved academic achievement, socio-emotional wellness, and positive youth development
- (2) Enhance and expand support services provided by DUSD and its community partners that result in improved the physical and mental well-being of students and families.
- (3) Build the capacity of parents, families, community members, and district staff to support the holistic development of DUSD students.

Engaging Historically Marginalized Student and Family Groups

DUSD utilizes various methods of engaging marginalized student and family groups, including formal and informal strategies.

Formal engagement opportunities facilitated by the district include a yearly Parent Voice workshop facilitated by Marti Kochevar (DUSD Superintendent) and the District English Learner Advisory Committee (DELAC). Parent Voice workshops provide all parents opportunities to provide direct feedback to the Superintendent regarding the school community. DELAC provides parents of English Learners opportunities to provide input into the development of a district master plan for education programs and services for English learners. DUSD provides bilingual translation for all flyers and parent meetings provided at the district and site level.

Formal engagement opportunities facilitated by school site teams include parent teacher conferences, English Learner Advisory Committee (ELAC), Student Support Team Meetings (SST), Individualized Education Plan Meetings (IEP), and Child Family Team Meetings (CFT). Parent teacher conferences are held at least once per year for every student. ELAC meetings, held throughout the year, provide parents of English Learners opportunities to provide input in the most effective ways to support full participation of their children, the most effective ways to ensure regular school attendance, learn more about the programs offered to their children, and participate in the school's needs assessment. IEP meetings are scheduled, at least once a year, for students with disabilities. SST meetings are scheduled, as needed, to support students who may be struggling. CFTs are scheduled, as needed, by Child Welfare Services for students who have been removed (foster youth) or are at-risk for removal from their homes.

DUSD staff also engages in informal one-on-one conversations with parents held during student drop off, pick up, and/or school events. District Community Liaisons and Administrative Assistants are bilingual and provide families with additional support during enrollment and registration to ensure all documents are collected and students are enrolled as soon as possible. District Community Liaisons also connect with families to check in, as needed throughout the year.

Student feedback is also obtained from student counseling sessions, and informal conversations held with students throughout the school day. To support participation and engagement of foster youth, homeless youth, and students from low-income households, school sites adopt families each year for school carnivals, whereas families receive prepaid tickets. This removes the financial barrier for families with limited financial means. School sites also work closely with our community-based partner, Campus Life, to ensure marginalized students are engaged and prioritized for mentor support.

All marginalized populations are prioritized for summer school, attendance support, parent teacher conferences, and more.

DUSD will develop additional targeted intentional strategies to engage marginalized populations and provide additional opportunities to provide feedback and input throughout the school year. DUSD will engage student leadership teams to obtain feedback through focus groups. Student leadership teams will then assist with obtaining peer feedback through the use of surveys. DUSD will require additional Parent Teacher conferences for marginalized populations and seek additional resources through community partnerships to address student and family needs. As we expand our network and increase collective resources for DUSD students and families in the 24-25 school year, interest holder meetings will be held monthly, and new partners will be invited to participate.

Part C: Collection Priorities

Collective Priority

Improved coordination and delivery of student support services that result in improved academic achievement, socio-emotional wellness, and positive youth development

Enhance and expand support services provided by DUSD and its community partners that result in improved the physical and mental well-being of students and families.

Build the capacity of parents, families, community members, and district staff to support the holistic development of DUSD students.

Outcome/Indicators we aim to improve

1. Improve interest-holder understanding and appreciation of the Community School Model
 2. Increase accessibility to mental health and other support services or students and families
 3. Improve coordination and delivery of student support services
 4. Increase awareness of available school and community services
 5. Improve student attendance
 6. Improve academic achievement, social-emotional growth, and youth development
1. Decrease behavioral incidents
 2. Increase access to in-school physical health supports
 3. Improve student health and school attendance
 4. Decrease chronic absenteeism and truancy rates
 5. Increase number of students enrolled in expanded learning programs.
 6. Increase access to mental health supports
 7. Enhance and expanded partnerships with community schools, partners, and interest-holders
1. Increase participation and engagement in shared leadership teams, councils, and committees.
 2. Increase capacity to support DUSD students
 3. Increase opportunities for families to engage in academic curriculum
 4. Improve student health and school attendance

Strategy 2: Centering Community-Based Learning

Community-Based Learning (CBL) builds on the rich, diverse cultural and linguistic backgrounds of students, families, and educators. Delivered in learning environments that are relationship-centered and ensure a sense of belonging, CBL builds on community assets, cultural wealth, funds of knowledge, and indigenous ways of knowing. Community-Based Learning is powerful instruction that increases student engagement by connecting classroom learning to real-life experiences and to issues that are relevant to students' lives and communities, improving their sense of ownership and agency.

Site Level Goals and Measures of Progress

Goals

Increase educator proficiency in community-based learning (CBL) to support English Language Arts, Mathematics, and English Language Development instruction.

Action Steps

1. Incorporate CBL into professional learning opportunities.
2. Teachers that participate in CBL professional learning share best practices for incorporating CBL into curriculum during grade-level PLCs.

Strategy 3: Collaborative Leadership

Shared decision-making ensures all interest-holders have a voice in the transformation process and fosters shared power of the strategy. Collaborative leadership improves coordination of services, fosters supportive relationships, results in decisions that are widely accepted and implemented, and supports sustainability of the effort.

Site Level Goals and Measures of Progress

Goals

Meaningful involve students, parents/families, school personnel, and community partners in community schools decision-making processes.

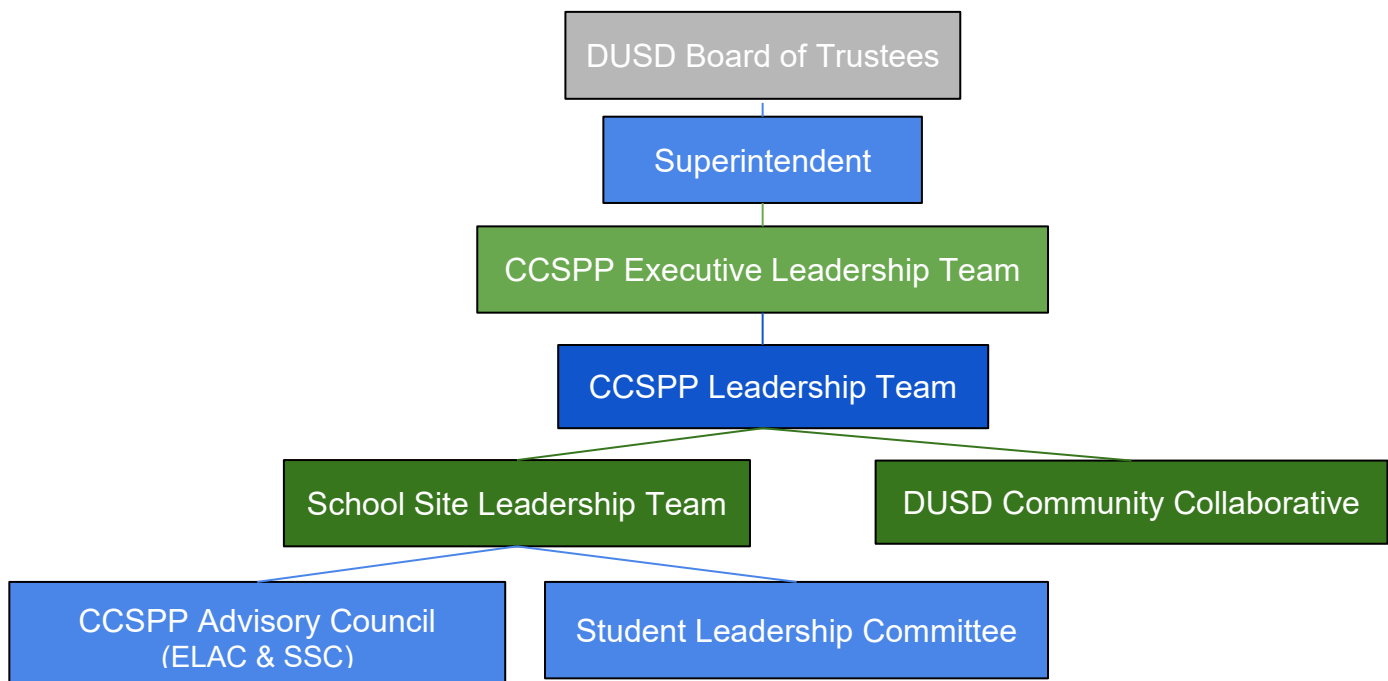
(Supports LCAP Goals 2 and 4)

Action Steps

1. Hold quarterly Leadership Team and Community School Advisory Council meetings.
2. Conduct annual site self-assessment
3. Conduct surveys of students, parents/families, school personnel, and community partners to collect community information on priorities and emerging needs. (annually)
4. Collect qualitative feedback on delivery of integrated student support and extended learning programming during LCAP, ELAC, and SSC meetings. (ongoing)
5. Advisory Council reviews and updates Needs Assessment, Asset Mapping & Gap Analysis Report and Implementation Plan. (annually)
6. Incorporate review and update of Implementation Plan into the LCAP planning process. (annually)

CCSPP Shared Governance and Site-Level Leadership Structure

Dinuba Unified has formalized district-level and site-level CCSPP Leadership Teams to guide districtwide community schools planning and interest-holder engagement. This includes an Executive Leadership team, CCSPP Leadership Team, Community Schools Collaborative, a School-Site Leadership Team, CCSPP Advisory Council, and Student Leadership Committee. The Executive Leadership Team includes the Community Schools Coordinator, District Leadership, Special Student Services Department Administrators, the Superintendent, and the Project external evaluation consultant. The CCSPP Leadership Team includes the Community Schools Coordinator, Special Student Services Department administrators, and principals from all district CCSPP funded sites. The Community Schools Collaborative includes the Community Schools Coordinator representatives from each DUSD Community School, Learning, Guidance, and Student Support Services Center staff, and representatives from community-based organizations. The Wilson Elementary Advisory Council includes the principal, teachers, school counselor, and parents from both the English Learners Advisory Committee and the School Site Council. The Student Leadership Committee includes 4th-6th grade student leaders. The district- and site- level leadership teams collaborate and share resources as detailed in the organizational chart below.



Dinuba Unified builds site- and district-level capacity to coordinate and deliver high-quality integrated student support services through a full-time Community Schools Coordinator to (1) serve as the Dinuba Unified lead in implementing the CCSPP Project and oversee overall implementation of the community schools process, programs, partnerships, and strategies at the site and district levels; (2) leads district-level CCSPP Leadership Team and supports site-level Advisory Councils; (3) manage partnerships and communications across DUSD community schools, partners, and interest-holders; (4) participate in community meetings to build relationships and collaboration with community organizations and to leverage all available services that benefit DUSD students, families, and community members; (5) oversee site- and district-level data management related to CCSPP Project goals; and (6) collaborate with the external evaluation consultant to assess the project's success and engage all DUSD interest-holders in ongoing project review and continuous quality improvement efforts. A district-funded Administrative Assistant provides clerical support and reports directly to the Community Schools Coordinator. The Administrative Assistant duties include organizing and assisting in the coordination of district and site trainings, coordination of travel and arrival of presenters, and other administrative duties related to the evaluation and reporting of CCSPP Project outcomes.

Strategy 4: Sustaining Staff and Resources

A focus on staffing and sustainability ensures that the necessary human and financial resources are available to maintain the strategy over time, and to sustain continuous progress and improvement.

Site Level Goals and Measures of Progress

Goals

Maintain Community Schools Coordinator to lead the CCSPP Project and oversee overall implementation of the community schools process, programs, partnerships, and strategies at the site and district levels. (Supports LCAP Goals 1-4)

Maintain CCSPP School Counselor to reduce pupil-to-counselor ratio and ensure each community school has a dedicated counselor. (Supports LCAP Goals 2 & 3)

Maintain CCSPP Licensed Vocational Nurse to provide health-related services to students and actively collaborate with parents to refer students in need of medical care or welfare assistance to the appropriate private or community resources. (Supports LCAP Goals 2 & 3)

Action Steps

1. Fund position through CCSPP and explore new funding sources for sustainability.
2. Approved Job Description on file
3. Signed contract on file.

1. Fund position through CCSPP and explore new funding sources for sustainability.
2. Approved Job Description on file
3. Signed contract on file.

1. Fund position through CCSPP and explore new funding sources for sustainability.
2. Approved Job Description on file
3. Signed contract on file.

Key Staff/Personnel

| | |
|--|--|
| Cynthia Garcia, Community School Coordinator | Serves as the Dinuba Unified lead in implementing the CCSP Project and oversees the overall implementation of the community schools process, programs, partnerships, and strategies at the site and district levels; chairs district-level CCSP Leadership Team, supports site Leadership Teams, and Advisory Councils; manages partnerships and communications across DUSD community schools, partners, and interest-holders. |
| Liliana Duran, Counselor | Provides a range of psychological and behavioral services to students, including conducting screening and assessment, leading individual and group counseling, coordinating with outside mental health and wraparound service providers; serves on site-level CCSP Advisory Council. |
| Alexandra Contreras, Licensed Vocational Nurse | Provides nursing and other health-related services to students, including specialized direct physical healthcare services and referral services. |
| Lupita Sotelo, Community Liaison | Works closely with DUSD health care staff to ensure students with chronic absenteeism issues are not experiencing health issues that would keep them out of school. |
| Noe Prado, Licensed Clinical Social Worker | Ensures that the needs of families are met through direct services provided in the Learning, Guidance, and Student Support Services Center or by a referral process to outside agencies. |
| Adrian Gutierrez, Principal | Provides site-level community schools leadership and support; serves on the CCSP Advisory Committee; works with Community School Director on site-level efforts to prospect, cultivate, and secure partnerships and resources. |
| Cheyenne Rede, Psychologist | Provides psychological, intellectual, and behavioral evaluation and recommends appropriate educational and psychological services in terms of the child's unique learning and psychological needs; serves on site-level CCSP Advisory Council. |
| Amanda Garcia, Teacher | Serves on site-level CCSP Advisory Council. |
| Jose Perez, Teacher | Serves on site-level CCSP Advisory Council. |
| Danielle Loveall, Teacher | Serves on site-level CCSP Advisory Council. |
| Becky Diaz, Administrative Assistant | Serves on site-level CCSP Advisory Council. |

Sustainability Plans

DUSD has formalized a research-informed sustainability plan to ensure core staffing is sustained through long-term funding that includes four primary strategies and is implemented and monitored under the direction of the Community Schools Coordinator and the Leadership Team. First, as documented in the CCSPP Implementation Budget, DUSD has committed a significant level of district matching funds and leveraged resources. This includes (1) release time for teachers to participate in collaborative planning time, (2) contracts with community partners to provide services related to CCSPP Pillar 4: Expanded Learning Time and Opportunities; (3) a contract with Tulare County Office of Education for community schools-related professional development; and (4) staffing of the Learning, Guidance, and Student Services Support Center.

Second, the CCSPP's rigorous evaluation plan will document key outcomes and impacts that will be shared with school and community interest-holders. The Leadership Team will develop formal presentations that highlight program successes and target specific groups of interest-holders (e.g., DUSD Governing Board). These presentations will quantify the CCSPP's return on investment resulting from reduced local expenditures on teacher recruitment and retention, resources needed to support struggling first-year teachers, the need for extra adults in classrooms, along with increased funding due to increased average daily attendance as a result of improved student support.

Third, cost-benefit analyses will be shared to encourage local leaders and interest-holders to reinvest cost savings into the community schools initiative. The Leadership Team will convene at the beginning of each program year to discuss fiscal planning and revise the program budget as necessary, which will include braiding increased financial support generated through cost savings resulting from community schools impacts.

Lastly, the Community Schools Coordinator will collaborate with community partners and government agencies to secure in-kind donations and direct funding from diverse sources, including the LEA MediCal Billing Option Program, the School-Based Medi-Cal Administrative Activities program, and the federal Early and Periodic Screening, Diagnosis and Treatment program.

Strategy 5: Strategic Community Partnerships

Developing strategic community partnerships allows schools and LEAs to build a stronger network of support and culturally responsive programming and resources for students, educators and families, and to foster a more inclusive, democratic and supportive learning environment that benefits everyone in the community.

Site Level Goals and Measures of Progress

Goals

During the 24/25 school year, prospect and cultivate at least one new partnership with community-based organizations to leverage available community resources that benefit and sustain the community schools initiative. (Supports LCAP Goal 3)

Action Steps

1. Review and update the CCSPP Partnership Matrix to identify any new partnerships. (annually)
2. Formalize partnerships with a written agreement.
3. Engage community partners in DUSD Community Collaborative Team Meetings. (monthly)

Community Schools Partnerships

The Community Schools Coordinator manages existing community schools partnerships, develops new relationships with additional agencies under the guidance of the Leadership Team, and leverages available community schools resources to benefit students, families, and community members. Representatives from community partners were engaged throughout the CCSP planning process and are invited to monthly Interest-holder meetings to collaboratively review school and community needs, plan and support service delivery, and engage in continuous quality improvement. The following list includes key agencies that collaborate with the DUSD's community schools to provide wraparound services to students and their families and support the implementation of community schools initiatives.

- Parenting Network - Dinuba Family Resource Center provides Dinuba families with case management, parent education, support groups, and help with accessing social services.
- Tulare County Office of Education (TCOE) provides services that improve the quality of DUSD community schools, including coaching and evaluation to support fidelity of PBIS and SEL implementation, and professional development on effective teaching and learning strategies and development of instructional units.
- TCOE Behavioral Health Services provides school-based mental health services for underserved students and supports operation of DUSD's Tier 3—intervention resource classroom for students with significant mental health needs.
- TCOE Choices Afterschool Program and City of Dinuba Youth Services provide resources and staff to lead after school and summer academic assistance and youth enrichment programming.
- Dinuba Children's Services serves as the primary referral for outpatient children's mental health services and provides consultation with school personnel and families on supporting student mental health. Turning Point also supports the district with substance abuse prevention and counseling services.
- Big Smiles California provides dental care clinics to underserved students at no cost to the district.
- Central California Food Bank partners with DUSD to facilitate distribution of food to families in need.
- Campus Life Mentoring Program provides adult mentors for at-risk students to build healthy life skills. Mentors are trained in Character Counts, Youth Mental Health First Aid, Restorative Justice, and CPR.
- Open Gate Ministries coordinates with the Learning, Guidance, and Student Support Services Center (LGSSSC) to provide housing and support services for homeless DUSD families.
- Dinuba Police Department provides DUSD with two school resource officers to ensure school safety and provide support during mental health crises. The Dinuba Police Explorer Program provides students with positive youth development programming, community leadership opportunities, and career exploration activities.

- Valley Health Team provides outpatient therapy services, comprehensive case management and community resource referrals.
- National Council on Alcoholism and Drug Dependence provides educational resources and facilitates presentations and an exhibit (Hidden in Plain Sight) on substance use awareness for student families.
- Girls on the Run is a running club designed to inspire and empower girls through physical activity, social-emotional skill development, and fun.
- Elevo provides afterschool sports focusing on teaching the rules, techniques, and teamwork.
- Fresno Pacific University facilitates a sports camp at FPU. Students receive expert coaching in soccer, basketball, baseball/softball, volleyball, and track and field from FPU coach and athletes.
- Impossible Science provides opportunities for students to conduct exciting hands on experiments.
- Feed the Children - provides backpacks with school supplies and shelf stable food products.
- Hope Horizons provides mental and behavioral health services for children and families.
- Family Services of Tulare County provides behavioral health services and support for victims of domestic violence. FSTC also participates in monthly interest-holder meetings, facilitates presentations and engages in health fairs and other community school events.
- Tulare County Child Welfare Services collaborates with the district to support student families. A representative participates in our Community Schools Executive Advisory Team and SARB meetings.