



McGraw Minutes

Issue #30 May 29, 2026

A Note From Mrs. Shaw...

McGraw Families,

I want to highlight a couple of PTO-sponsored events coming up. We hope you can join us at the McGraw End Of Year Party tomorrow, May 30, 10:00a-3:00p. There will be games, the Scholastic Book Fair, and food trucks. See the information below.

On June 4, Marsh Island Kitchen is sponsoring the McGraw PTO with Dine for a Cause from 4:00p-8:00p.

I want to send a sincere thank you to our PTO for all of their support this school year. PTO members have dedicated hours of their time to organize fundraisers and events for students and staff. We appreciate the way that our PTO supports our students' educational experience and McGraw wouldn't be the same without them!

The Last Day of School is June 11 - Early Release Day @ 12:05p.

RSU22's Compliance with the New State of Maine "Bell-to-Bell" Law



May 22, 2026

Dear RSU 22 Community,

As we continue to focus on providing the best possible learning environment for our students, our administrative team would like to provide you with advance notice regarding an important change that will take effect beginning in the fall of the upcoming school year within RSU 22.

In alignment with the State of Maine's new "bell-to-bell" law regarding personal electronic devices in schools, our district must implement a new personal electronic device policy. ***This policy will restrict the usage of all personal electronic devices in all RSU 22 schools beginning with the start of school in 2026-2027.*** The purpose of this change is not only to adhere to the new law, but also to support student learning, increase engagement in the classroom, minimize distractions during the school day, and promote positive social interaction among students.

This policy will apply to all personal electronic devices including, but not limited to:

- Cell phones
- Smart watches
- Tablets
- Personal laptops
- Other personal electronic devices with internet or cellular network capabilities

Additional details regarding the expectations, procedures, and implementation of this policy will be shared with families and students prior to the start of the school year. Our goal is to ensure that all students and families clearly understand the expectations and the reasons behind this change.

We recognize that personal technology has become a significant part of everyday life, and we appreciate your partnership and support as we work together to uphold the law and create an environment that prioritizes student learning, focus, and well-being throughout the school day.

Thank you for your continued support of our schools, our staff, and most importantly, the students within our district. We greatly value our partnership with families and look forward to a successful conclusion to our current school year as well as our school year ahead. If you have any questions related to your child's needs related to this new change, please reach out to your child's principal and they will be happy to speak with you.

Sincerely,

Nick Raymond

Committed to the optimal learning of all students

Critical Thinking • Perseverance • Collaboration • Effective Communication • Problem Solving

End of Year Library Book Collection

As we come to the final weeks of the school year, it is time to return the school library books. We would love to have all the books back in the library the first week of June. Please watch for notices about missing books in your child's folder.



Field Day Volunteer Sign Up (June 8)

If you are an **approved volunteer** and would like to help with field day, please sign up here!

MCGRAW FIELD DAY

Please sign up!

Scan this code with your smartphone camera now:



We're using SignUp (the leading online signup and reminder tool) to organize our upcoming activity.

Please sign up for McGraw Field Day!

Here's how it works in 3 easy steps:

1. **Click this link** to go to our invitation page on SignUp: <https://signup.com/go/yPxfGCL>
 2. **Enter your email address:** (You will NOT need to register an account on SignUp)
 3. **Sign up!** Choose your spots - SignUp will send you an automated confirmation and reminders. Easy!
- Note: SignUp does not share your email address with anyone. If you prefer not to use your email address, please contact me and I can sign you up manually.



RSU 22 FY27 Proposed Budget – Stay Informed & Get Involved!

Please click here to view the **May 13, 2026** RSU 22 Board Budget Workshop Meeting: <https://www.youtube.com/watch?v=mmhbzgZVx8o>

Documentation for all meetings can be found here: https://drive.google.com/drive/folders/1iXYDRA5hMOFiTs_tnHZHXrB6ZSzsSk4tq

The FY27 Budget Presentation can be found here:

<https://drive.google.com/drive/folders/1QKWNSQnezG1qusRcNw7EMKKw9gtubq8P>

Your voice matters—**stay informed, ask questions, and be part of the process!**

A Note From Nurse Adams...

Dear McGraw Families,

As we begin to prepare for the end of the school year, I wanted to send you a few health office reminders:

Medication Pick-Up

- If your child receives or has medications/medical items stored at school, please make arrangements with me to have them picked up.
- For inhalers, spacers, EpiPens, and Benadryl only- these items may be sent home with your child on the last day of school if prior arrangements are made.
- All other medications and items must be picked up by a parent or guardian. Anything not picked up by 3:00 pm on Friday, June 12th, will be disposed of per protocol.
- Arrangements can be made with me via email at nadams@rsu22.us or by phone at (207) 862-3830.

Sunscreen and Insect Repellent

-We do not typically apply or supply sunscreen or insect repellent to students during the school day. If you wish for your student to wear these items, please apply them in the morning prior to sending them to school or make arrangements with your child's teacher.

Dressing for the Weather

- This time of year the mornings tend to be cool and the afternoons warmer. It is best to dress your child in clothing appropriate for warmer weather and add layers. Shorts with a sweatshirt for example. You may also send a change of clothes in your child's backpack. We all know how unpredictable Maine weather can be.
- Please send your child to school in proper footwear and clothing for running and playing outside. Sneakers are preferred for safety reasons.

With the warmer weather come ticks, particularly from spring to early Fall

Ticks are most active during the warmer months, and it's important to take precautions to protect yourself and your family from potential tick bites and the diseases they can transmit.

tick removal

Remove ticks immediately. They usually need to attach for 24 hours to transmit Lyme disease. Consult a physician if you remove an engorged deer tick.



Using a tick spoon:

- Place the wide part of the notch on the skin near the tick (hold skin taut if necessary)
- Applying slight pressure downward on the skin, slide the remover forward so the small part of the notch is framing the tick
- Continuous sliding motion of the remover detaches the tick

Using tweezers:

- Grasp the tick close to the skin with tweezers
- Pull gently until the tick lets go

1-800-821-5821

www.mainepublichealth.gov



tick ID

KNOW THEM. PREVENT THEM.



Deer Tick (Black-Legged Tick)

nymph adult male adult female

(actual size)

nymph (1/32"-1/16") adult (1/8") engorged adult (up to 1/2")



Dog Tick

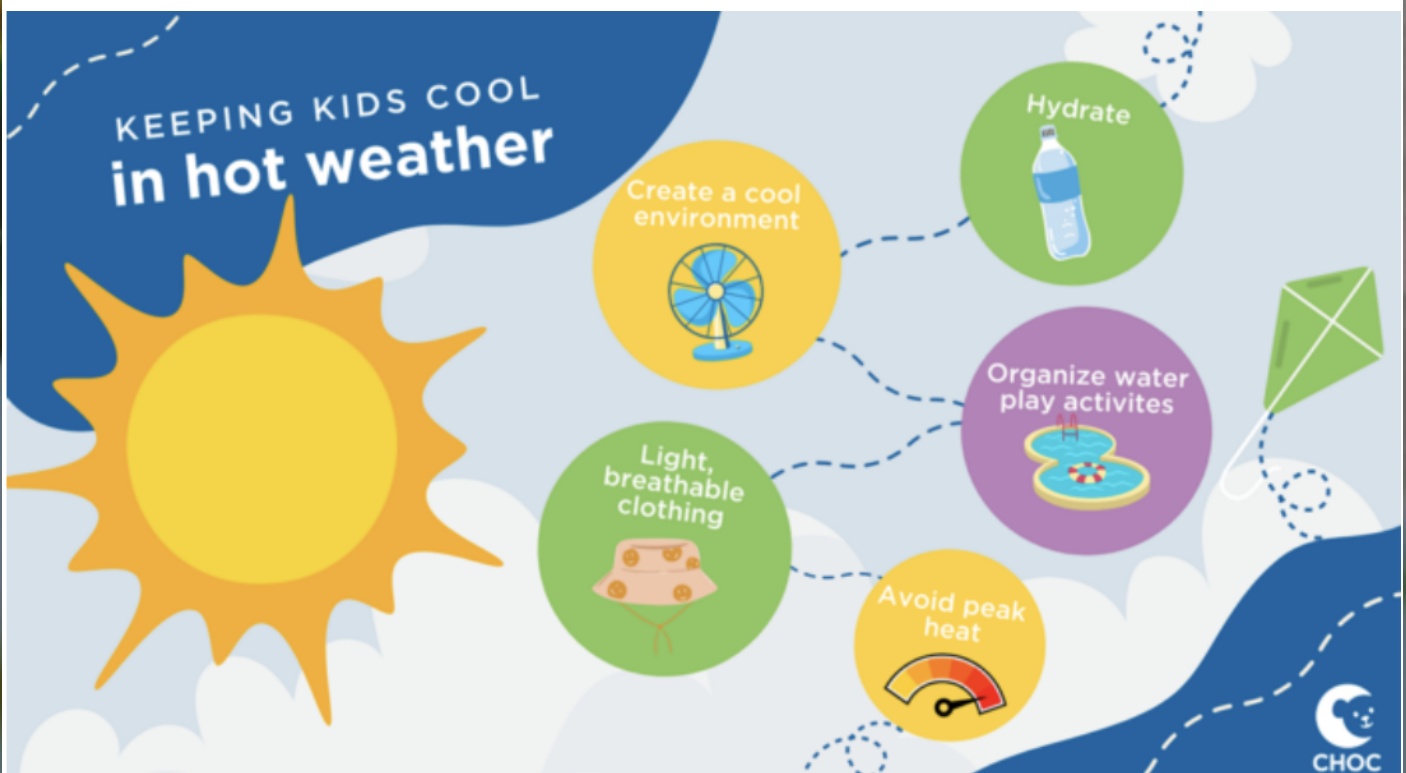
adult male adult female

(examples are not actual size, dog tick nymphs are rarely found on humans or their pets)



Staying Safe in Warmer Weather

- Always make your child wear a helmet when riding a bike, rollerblading/skating, riding and ATV, or other similar activities
 - Always make your child wear a life jacket when boating, kayaking, or other water related activities
 - Apply sunscreen and insect repellent to avoid sunburns and insect bites
 - Stay hydrated and watch for signs of heat exhaustions
 - Let the nurse know of any restrictions your child may have related to injuries/procedures/surgeries.
- Provide a doctor's note so your student may be excused from activities and PE if necessary.



Heat Exhaustion

Heat Stroke

ACT FAST

- Move to a cooler area
- Loosen clothing
- Sip cool water
- Seek medical help if symptoms don't improve

Dizziness

Thirst

Heavy Sweating

Nausea

Weakness



Confusion

Dizziness

Becomes Unconscious

ACT FAST

CALL 911

- Move person to a cooler area
- Loosen clothing and remove extra layers
- Cool with water or ice

Heat exhaustion can lead to heat stroke.

Heat stroke can cause death or permanent disability if emergency treatment is not given.



Stay Cool, Stay Hydrated, Stay Informed!



McGraw School Office

School Hours

8:30a- 3:00p

If you need to contact the office...

Office Hours: 7:45 a.m. - 4:00 p.m.

call: 207.862.3830

email: mcgrawoffice@rsu22.us (all dismissal/absence communication)

fax: 207.862.5649

visit: 20 Main Rd. N. Hampden, ME 04444

McGraw Administrative Assistant: Mrs. Nason, knason@rsu22.us

McGraw Administrative Assistant: Mrs. Paradis, dparadis@rsu22.us

Principal: Mrs. Shaw, shannonshaw@rsu22.us

School Nurse: Mrs. Adams, nadams@rsu22.us

School Counselor: Mrs. Erickson, merickson@rsu22.us

McGraw Website

Upcoming Dates:

Watch this list carefully, as we will be adding events throughout the spring!


- 5/30 End of Year Party (Sponsored by PTO) and Family Book Fair Event
- 6/4 Dine for a Cause- Marsh Island Kitchen and PTO Collaboration 4:00p-8:00p (see information below)
- 6/8 Field Day & Family Picnic
- 6/10 Final All-School Share @ 9:30a
- 6/11 Last Day of School (Early Dismissal @ 12:05p)



Calendars

June 2026

SUN	MON	TUE	WED	THU	FRI	SAT
31 	1 F	2 A	3 B	4 C	5 D	6
7 	8 E	9 F	10 A	11 Last Day of School! Early Dismissal at 12:05pm	12 Hello SUMMER	
14	15 	16 	17	18 <i>have a great</i>	19	20
21	22 	23 	24 	SUMMER		27
28	29	30	1	2	3	4

School Meals with a Milk are offered at NO CHARGE Milk for Home Lunch \$0.55		McGraw / Weatherbee June Lunch Menu			Breakfast Entrée or Cereal Fruit, Juice, Milk
Monday	Tuesday	Wednesday	Thursday	Friday	
1 Chicken Tenders Goldfish Crackers  Salad & Fruit Bar	2 Nachos Seasoned Beef Cheddar Cheese & More Salad & Fruit Bar	3 Popcorn Chicken Pasta Salad Salad & Fruit Bar	4 Marinara Meatballs with Garlic Bread Salad & Fruit Bar	5 Pizza Chef's Choice Toppings Salad & Fruit Bar	
8 McGraw Field Day Lunch Weatherbee Pizza	9 Chicken Nuggets Crackers Salad & Fruit Bar	10 McGraw Pizza Weatherbee Field Day Lunch	11 Early Dismissal Snack Pack TO GO	12 NO SCHOOL Start of Summer Vacation 	
Have a great summer!					
<i>Alternate Menu Choices - Peanut Butter & Jelly Meal and Daily Chef's Special</i>					
Fruit & Salad Bar Always Offered 		<i>Menu Subject to Change</i> This institution is an equal opportunity provider			

RSU22 2025-2026 School Calendar

RSU #22: 2025-26 School Calendar

August					
M	T	W	Th	F	
4	5	6	7	8	
11	12	13	14	15	
18	19 Sped	20	21 Ed Techn	22 TP	
25 M	26 I	27 Gr. 1-9	28 Gr. 1-12 UTC	29	1 0 5,3 6,3

September					
M	T	W	Th	F	
1 H	2 (Pre-K - K 1st day)	3	4	5	4 4
8	9	10	11	12	5 5
15	16	17	18	19	5 5
22	23	24	25	26	5 5
29	30				2 2 21 21 (27,24)

October					
M	T	W	Th	F	
	1	2	3		3 3
6	7	8	9	10 I	5 4
13 H	14	15	16	17	4 4
20	21	22	23	24	5 5
27	28	29	30	31	5 5 22 21 (49,45)

November					
M	T	W	Th	F	
3	4	5	6	7	5 5
10	11 H	12	13	14	4 4
17	18	19	20	21	5 5 T
24	25 ED	26 C	27 H	28 V	3 2 17 16 (66,61)

December					
M	T	W	Th	F	
1	2	3	4	5	5 5
8	9	10	11	12	5 5
15	16	17	18	19	5 5
22	23 ED	24 V	25 H	26 V	2 2
29 V	30 V	31 V			17 17 (63,78)

January					
M	T	W	Th	F	
		1 H	2 V		0 0
5	6	7	8	9	5 5
12	13	14	15	16 I	5 4
19 H	20	21	22	23	4 4 Q
26	27	28	29	30	5 5 19 18 (102,96)

February					
M	T	W	Th	F	
2	3	4	5	6	5 5
9	10	11	12	13 ED	5 5
16 H	17 V	18 V	19 V	20 V	0 0
23	24	25	26	27	5 5 15 15 (117,111)

March					
M	T	W	Th	F	
2	3	4	5	6	5 5
9	10	11	12	13 I	5 4 T
16	17	18	19	20	5 5
23	24	25	26	27	5 5
30	31				2 2 22 21 (139,132)

April					
M	T	W	Th	F	
		1	2	3	3 3 Q
6	7	8	9	10	5 5
13	14	15	16	17 ED	5 5
20 H	21 V	22 V	23 V	24 V	0 0
27	28	29	30		4 4 17 17 (156,149)

May					
M	T	W	Th	F	
				1	1 1
4	5	6	7	8	5 5
11	12	13	14	15	5 5
18	19	20	21	22 ED	5 5
25 H	26	27	28	29	4 4 20 20 (176,169)

June					
M	T	W	Th	F	
1	2	3	4	5	5 5
8	9	10	11 ED	12	4 4 Q T
15	16	17	18	19 H	0 0
22	23	24	25	26	0 0 9 9 185/178 T S

School Year
 178* Student Days
 1 Management Day
 1 Teacher Preparation Day
 4 Inservice Days
 1 Teacher Comp Day
 (* 3 storm days included)

- | | | | |
|---|---|---|--|
| August 18
August 19, 20, 21
August 21
August 22
August 25
August 26
August 27
August 28
August 28
September 2
November 26
11/25, 12/23, 2/13, 4/17, 5/22, 6/11
8/25, 9/25, 9/26, 10/10, 1/16, 3/13
June 7
June 11 | Fall Sports
Teacher Orientation (8/19 Sped only)
Educational Technicians start date
Teacher Prep
Management Day
Staff Inservice day
Partial Attendance (Gr 1-9 students)
Full Attendance (Gr 1-12 students)
UTC First Day
Inservice - No school
Teacher Comp Time (no school)
Early Dismissal
Inservice - No school
Hampden Academy Graduation
Last Student Day | Quarters Q
1 45 days
2 46 days
3 44 days
4 43 days
178 | Trimesters T
8/27/25-11/21/25 59 days
11/24/25-3/12/26 61 days
3/16/26-6/11/26 58 days
178 |
|---|---|---|--|

Approved: May 21, 2025

RSU 22 2026-2027 School Calendar

RSU 22 - 2026-2027 School Calendar

August				
M	T	W	Th	F
17	18	19	20 Sped NT	21 NT
24 Ed Techs NT	25 TP	26 M	27 I	28 I
31 Gr. 1-9				

September				
M	T	W	Th	F
	1 Gr 1-12 UTC	2	3	4
7 H	8 (Pre-K -K 1st day)	9	10	11
14	15	16	17	18
21	22	23	24	25
28	29	30		

October				
M	T	W	Th	F
			1	2
5	6	7	8	9 ED
12 H	13	14	15	16
19	20	21	22	23
26	27	28	29	30

November				
M	T	W	Th	F
2	3	4	5	6
9	10	11 H	12	13
16	17	18	19	20
23	24 ED	25 C	26 H	27 V
30				

December				
M	T	W	Th	F
	1	2	3	4
7	8	9	10	11
14	15	16	17	18
21	22	23 V	24 V	25 H
28 V	29 V	30 V	31 V	

January				
M	T	W	Th	F
				1 H
4	5	6	7	8
11	12	13	14	15
18 H	19	20	21	22
25	26	27	28	29

February				
M	T	W	Th	F
1	2	3	4	5
8	9	10	11	12 ED
15 H	16 V	17 V	18 V	19 V
22	23	24	25	26

March				
M	T	W	Th	F
1	2	3	4	5
8	9	10	11	12 I
15	16	17	18	19
22	23	24	25	26
29	30	31		

April				
M	T	W	Th	F
			1	2
5	6	7	8	9
12	13	14	15	16 ED
19 H	20 V	21 V	22 V	23 V
26	27	28	29	30

May				
M	T	W	Th	F
3	4	5	6	7
10	11	12	13	14
17	18	19	20	21
24	25	26	27	28 ED
31 H				

June				
M	T	W	Th	F
	1	2	3	4
7	8	9	10	11 ED
14 I	15	16	17	18

School Year

178* Student Days

- 1 Management Day
- 1 Teacher Preparation Day
- 4 Inservice Days
- 1 Teacher Comp Day
- (* 3 storm days included)

- August 17
- August 23, 21, 24, 25
- August 24
- August 25
- August 26
- August 27, 28
- August 31
- September 1
- September 1
- September 8
- November 25
- 10/9, 11/24, 2/12, 4/16, 5/28, 6/11
- 8/26, 8/27, 8/28, 3/12, 6/14
- June 6
- June 11
- June 14

- Fall Sports
- Teacher Orientation (8/20 Sped only)
- Educational Technicians start date
- Teacher Prep
- Management Day
- Staff Inservice day
- Partial Attendance (Gr 1-9 students)
- Partial Attendance (Gr 1-12 students)
- UTC First Day
- Full Attendance (Pre-K - K First Day)
- Teacher Comp Time (no school)
- Early Dismissal
- Inservice - No school
- Hamden Academy Graduation
- Last Student Day
- Last Teacher Day

Quarters Q		Trimesters T	
1	48 days	8/31/26-11/24/26	59 days
2	42 days	11/30/26-3/11/27	60 days
3	44 days	3/15/27-6/11/27	59 days
4	44 days		178

APPROVED 4/15/2026

PTO Happenings



McGraw Bottle Drive Ongoing Fundraiser

Ways to Donate

CLYNK

1) Email McGrawPTO@gmail.com to get Clynk Bags sent home with your child. Please provide name, teacher's name and how many bags. They will have our Clynk Account Bag tags. Just fill the bags and bring them to the Clynk kiosk at Hannaford.

2) Already have a Clynk account? Login and click "Donations" scroll down, to type "McGrawPTO" into the search. Choose how much you would like to donate from your Clynk account balance.

Damon Beverage and Redemption

Located at 700 Hogan Rd in Bangor. Tell them you would like to donate your bottles to McGraw PTO once you get your slip!



Spirit Wear

If you're looking for McGraw Gear, go to our local vendor, Goodwin Glass & Graphics!

<https://www.goodwinglassandgraphics.com/product-category/mcgraw/>

Community Board

Strategic Plan 2022-2027

Four Building Blocks



1	2	3	4
Student Success	Professional Excellence	Community Partnerships	Operational Excellence
Academic Excellence & Achievement	Recruitment & Retention	Family & Community Engagement	Budget Development
Foundational Skills	Professional Development	RSU 22 Educational Foundation	Fiscal & Facilities Management
Instructional Models	Best Practices	Communication & Transparency	Comprehensive Planning
Engagement		Campus Based Services	



Shannon Shaw

Shannon is using Smore to create beautiful newsletters