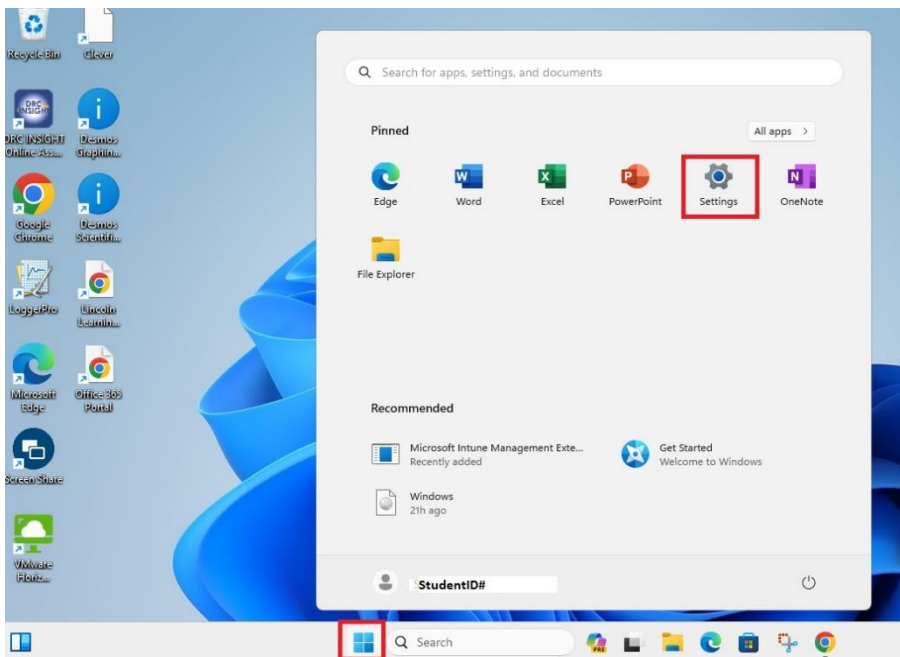


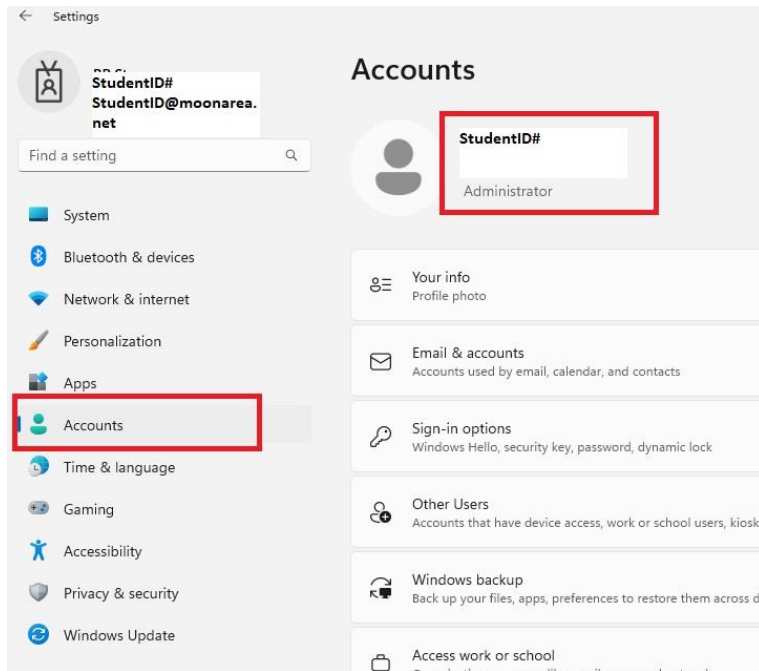
PART 1 – **MUST BE DONE WHILE ATTACHED TO SCHOOL WI-FI NETWORK.**

1. While in proximity to the school's Wi-Fi, connect and login to your senior device on moon's domain.
2. Once you are logged in, wait to see if Microsoft Teams opens. If it does, please close/exit out of Microsoft Teams.

(This will allow some time for the new policy to update to the device)
3. Click the **Start/Windows button** on the taskbar, then click on **Settings** symbol. If the settings window does not open, your computer does not have the SENIOR policy. Please restart your computer and try this procedure again.



4. In the Windows Settings menu, click on **Accounts**. Under your **StudentID number** on the right side, **Administrator** should be listed if the policy is applied.



If (**Administrator**) is not listed under your **StudentID#** restart the device and let it sit on the school Wi-Fi for ten minutes.

You now have **SENIOR** policy. You may now shut down your PC, drive home, and continue to **PART 2**.

PART 2 – **MUST BE DONE ANYWHERE OUTSIDE OF THE DISTRICT**

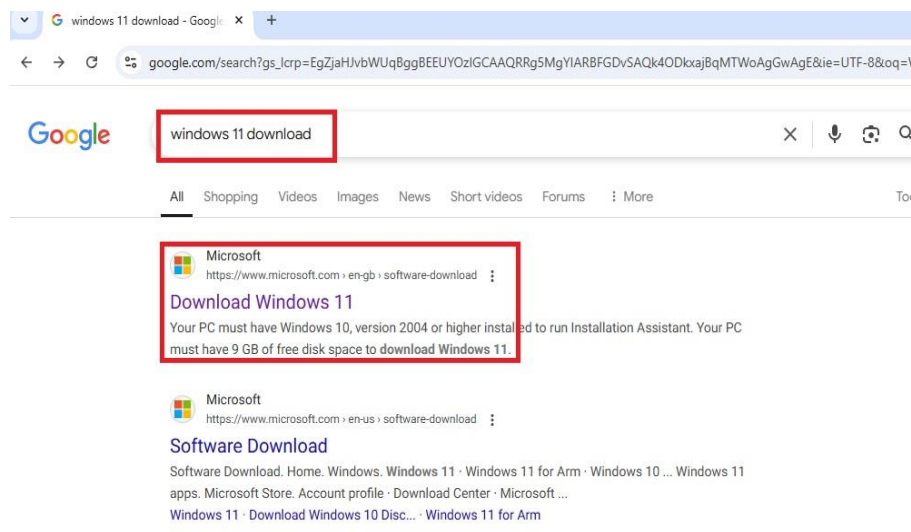
Need to have your laptop plugged into the charger, and the charger powered for the installation to proceed. The download and install process over Wi-Fi can take 1-4 hours to complete

1. Turn on your device once you are at home and it is plugged in and charging.
2. Connect to your home WIFI or Direct network cable
3. Login to your moon account as normal.
4. Run **GOOGLE CHROME** icon.

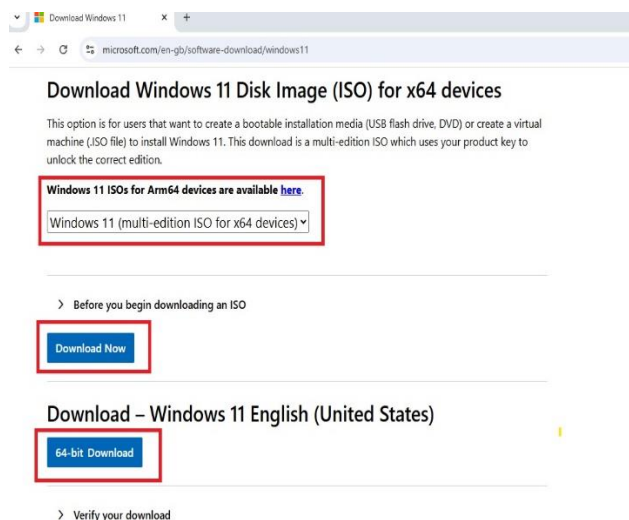
Type in a search: **WINDOWS 11 DOWNLOAD** and select the

www.microsoft.com> software download > windows 11

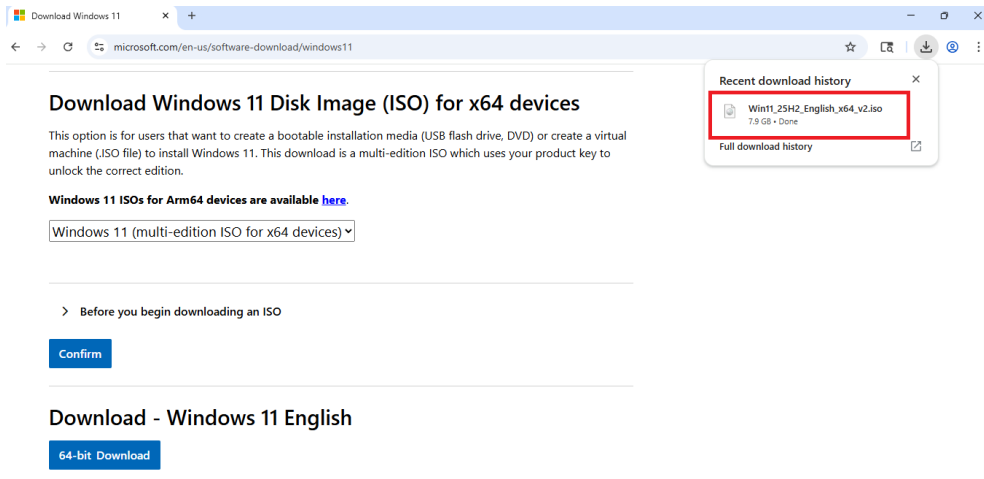
Download Windows 11 Disc Image (ISO File) – Microsoft link



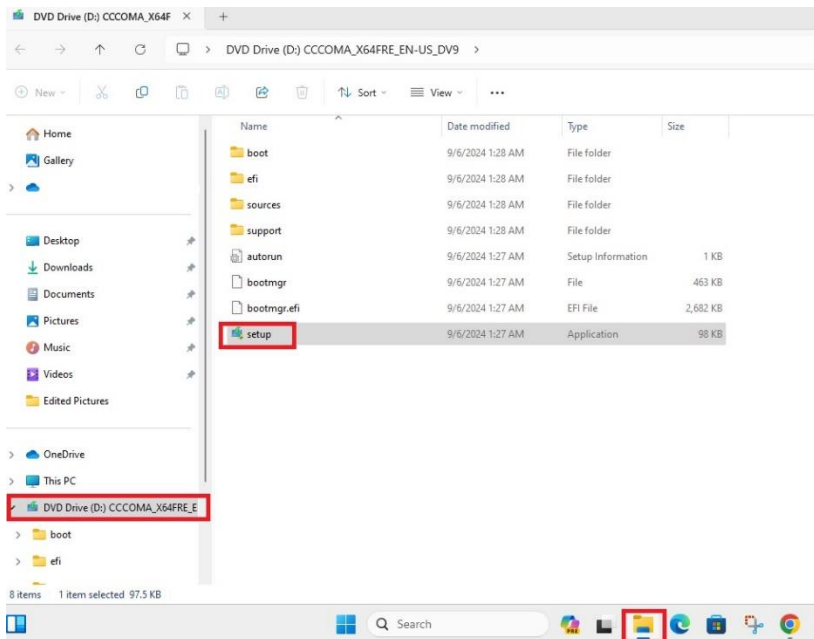
5. On the (<https://www.microsoft.com/en-gb/software-download/windows11>) page, click **(Download Windows 11 Disk Image (ISO) for x64 devices)** in the dropdown box, select **Windows 11 (multi-edition ISO for x64 devices)** then click **Download Now or Confirm**, select **Product Language** then **Confirm**, and click **64-bit Download**.



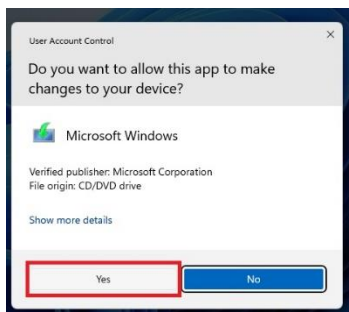
6. Click on the **(Win11_25H2_English_x64_v2.iso)** file once downloaded.



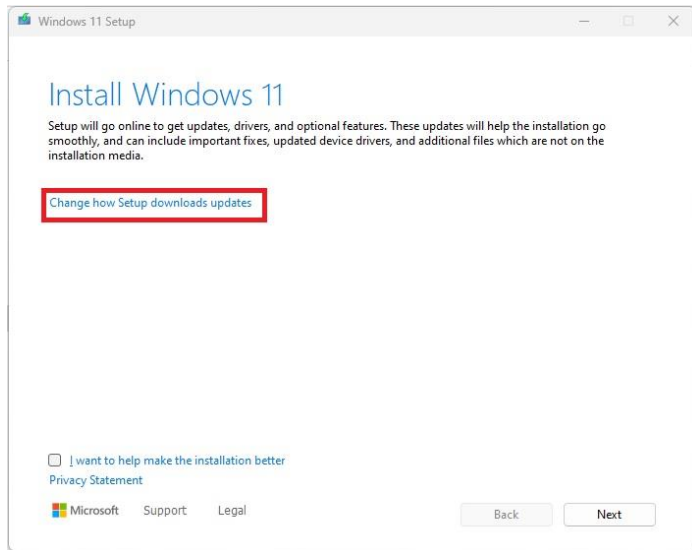
7. In File Explorer, click **(DVD Drive D:)**, and **Setup**.



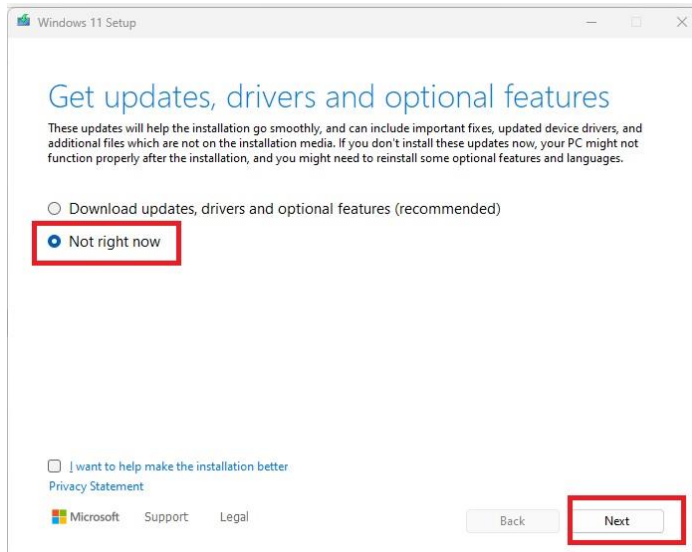
8. Click **(Yes)** in User Account Control.



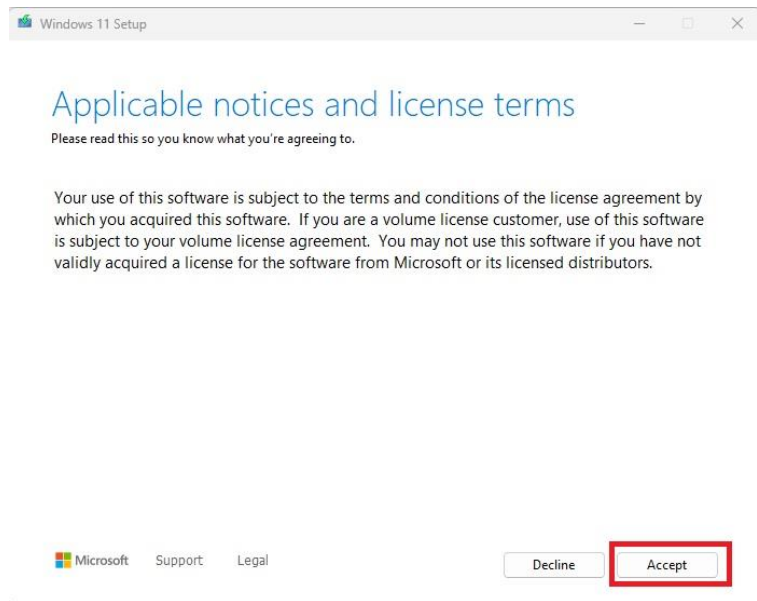
9. Install Windows 11: Click **(change how Setup downloads updates)**.



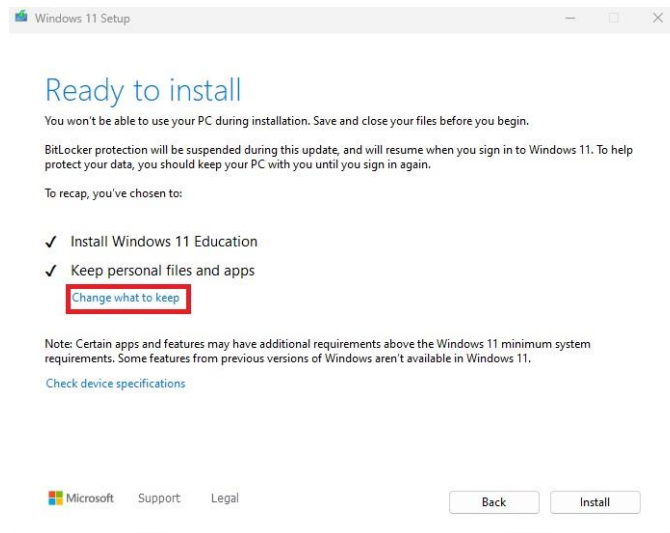
10. Change the update option to **(Not right now)** then **Next**.



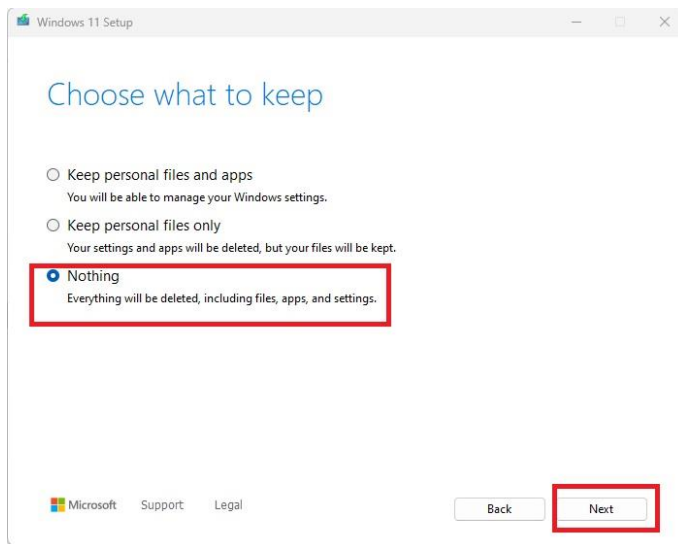
11. Accept Notices and License Terms: Click **Accept** to continue.



12. Ready to install: Click **(Change what to keep)**.



13. Choose what to keep: click **(Nothing)** then **Next**.



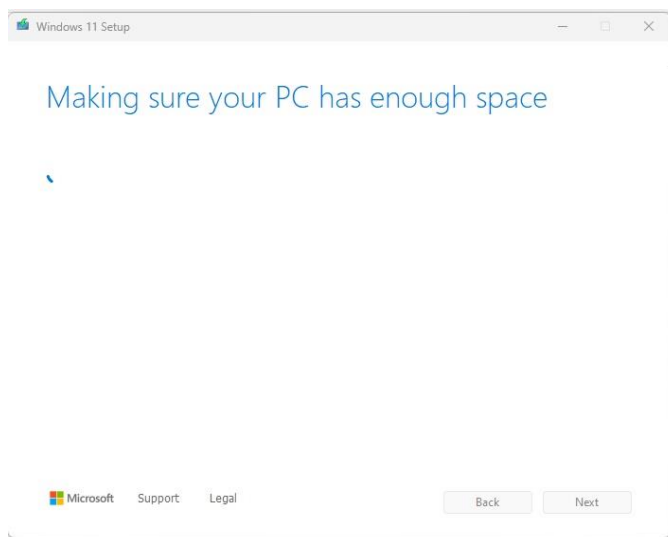
****THIS WOULD BE A GOOD TIME TO BACKUP ANY FILES YOU NEED**.**

For temporary storage, you can copy all files from your PC to your ONEDRIVE.

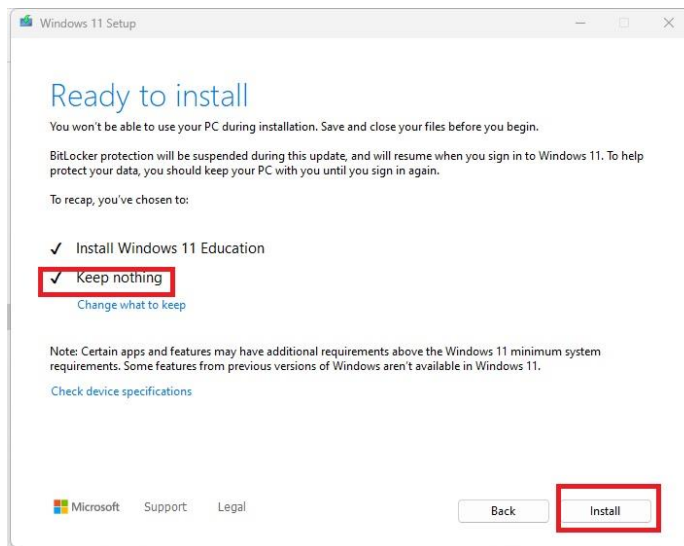
(PLEASE NOTE-Your moon Office365 account will be deleted after the summer)

After the installation, ALL FILES ON THE PC WILL BE DELETED. You will need to sign in to your ONEDRIVE to retrieve any files from your ONEDRIVE to your new PC before the ONEDRIVE expires.

14. Making sure your PC has enough space.



15. Ready to install: Make sure **(Keep nothing)** option is selected then click **Install**.



This is the last step. ****MAKE SURE ALL FILES ARE SAVED FROM YOUR PC****

Once you click **INSTALL** the PC will begin a fresh installation of Windows 11. It will reboot while installing. Once the installation is completed, it will be as if it was store bought new. You will be prompted to create a new user account and set up a password if you desire, sign in to your Wi-Fi and wait for the new user profile to be created for you. **(Windows 11 requires you to make a Microsoft account to sign into the device. Please don't sign in with your Moon account because it will be deleted).**