

CAFETERIA SYSTEMS



SPRING 2026



GET READY!



END OF YEAR 2025/2026

Path # 1

No Summer Service In Mosaic

STEP 1: Complete the End Of Year Survey
By June 15th [Survey Link →](#)

Step 2: Make an appointment with the TSCafe Team to complete the Mosaic End of Year (EOY Process must be at least 24 hours after your last meal service and banking.) tscafesupport@elb.org

Step 3: Complete MSB EOY Refunds needed [Refund Best Practice→](#)
[How To Transfer Funds→](#)

Step 4: At your appointment we will
-Run Reports needed
-Run the Mosaic End Of Year process
-Check your Mosaic Setup

Step 5: Make your Start Of Year appointment if possible

Path # 2

Summer Service Using Mosaic

STEP 1: Complete the End Of Year Survey
By June 15th [Survey Link →](#)

Step 2: Set Summer Service Reimbursement Rates Setup (The TSCafe Team is available to assist)

Step 3: Make an appointment with the TSCafe Team to complete the Mosaic End of Year. (EOY Process must be at least 24 hours after your last meal service and banking.) tscafesupport@elb.org

Step 4: Complete MSB EOY Refunds needed [Refund Best Practice→](#)
[How To Transfer Funds→](#)

Step 5: At your appointment we will
-Run Reports needed
-Run the Mosaic End Of Year process
-Check your Mosaic Setup

Step 6: Make your Start Of Year Appointment

End of Year- Full Guide



Important Dates - Performed by the TSCafe Techs
June 8th - MySchoolBucks Auto Replenishments turned off
June 15th - MySchoolBucks Store turned off

**Should your district choose to manage MSB on their own, please make sure to notify our team via email tscafesupport@elb.org.



NEWS

Mosaic Back of the House (BOH) TSCafe Support Available 26-27 SY

Mosaic Back of the House (BOH) is a web-based food service management software that is designed to streamline inventory, menu planning and operational tasks for K-12 nutrition programs.

Key Features Include:

- Inventory and Ordering Management
- Access to pre-loaded CN database
- Recipe and Menu Development
- Reporting and Compliance according to USDA Guidelines
- Automates routine tasks such as inventory updates and planning, reducing manual work.

Benefits:

- Recipe Sharing
- Control costs, reduce waste, and eliminate overproduction
- Easily Facilitate production records

[See Service Now for Details and Requirements](#)

In addition, we are offering support for [MealViewer AI Add-on](#) and [MySchoolApps](#)
Email Cafe Systems Coordinator: Mindy Gigantelli mgigantelli@elb.org for a demo or more information.

NEWS

Mosaic Back of the House (BOH) TSCafe Support Available 26-27 SY

Mosaic Back of the House (BOH) is a web-based food service management software that is designed to streamline inventory, menu planning and operational tasks for K-12 nutrition programs.

Key Features Include:

- Inventory and Ordering Management
- Access to pre-loaded CN database
- Recipe and Menu Development
- Reporting and Compliance according to USDA Guidelines
- Automates routine tasks such as inventory updates and planning, reducing manual work.

See Service Now for Details and Requirements

Benefits:

- Recipe Sharing
- Control costs, reduce waste, and eliminate overproduction
- Easily Facilitate production records

In addition, we are offering support for [MealViewer](#), [AI Add-on](#), and [MySchoolApps](#)
 Email Cafe Systems Coordinator: Mindy Gigantelli mgigantelli@elb.org for a demo or more information.

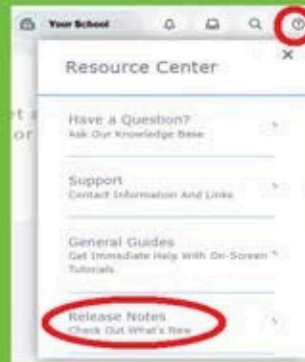
School Nutrition Recognition Awards: A Complete Guide

- Are you, or do you know someone doing great?
- Any SFA participating in the NSLP or SBP in the US, its territories, or DC is eligible to apply, regardless of district size.
 - Awards come with national recognition, a digital awardee toolkit, and travel stipends to attend national summits.
 - Applications are reviewed on a rolling basis, with no single annual deadline.

[More Information](#) | [Healthy Meals Incentives](#)

Changes in Mosaic

New releases are upgrades to software for security, use and reliability. Heartland's goal is to make functionality, look and feel of reports/filters/navigation, match all Apps. (Mosaic, Mosaic BOH, MySchoolBucks, MySchoolApps, to look and feel seamless.)
 Release Notes are available from the website



SNAP Outreach

Boost your district's CEP/P2 eligibility and Title 1 funding poverty % by taking advantage of the Direct Certification Free Status obtained through SNAP. Help educate families throughout the remainder of the year and over the summer [Toolkit Link](#)

CEP/P2 Application Guidance

Applications are now available for the 2026-27 school year. Guidance can be found at NYS Childhood Nutrition [LINK](#)

"Lifelong learning is critical to success. We upskill to get better at what we do."

MOSAIC POINT OF SALE



CAFE SUPPORT WEBSITE

Check Out the New Cafe Systems Website



[CAFE SUPPORT WEB](#)

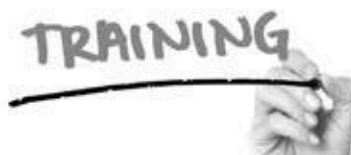


MOSAIC UPDATES

May 2026 Release notes



[FIND OUT WHAT'S NEW IN MOSAIC](#)



QUESTIONS/TRAINING

Get your questions answered and training support here.

- New Staff/Changing Roles
- Reports Troubleshooting

LET'S TALK 716-821-7050

WE VALUE YOUR OPINION!

Please complete this short survey before you leave.



How do you find the provided training materials?

Very effective

Effective

Neutral

Ineffective

Very ineffective

Your Camva profile name won't be shared

How likely are you to benefit from a Mosaic office hour session?

Very Likely

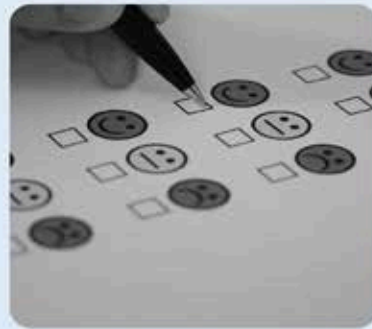
Somewhat Likely

Neutral

Unlikely

Very unlikely

Your Camva profile name won't be shared



Are there any specific improvements you'd like to see in our support services?

Yes

No

Please share

Submit

Your Camva profile name won't be shared. Never submit passwords.



THANKS FOR YOUR FEEDBACK!

Your answers will help us make necessary improvements to serve your needs better.