

ELECTRICAL SYMBOLS

SOME SYMBOLS MAY NOT APPEAR ON DRAWINGS

- BRANCH CIRCUIT IN WALL OR CEILING
- BRANCH CIRCUIT EXPOSED
- BRANCH CIRCUIT IN FLOOR OR EARTH
- BRANCH CIRCUIT EXISTING
- UNDERGROUND PRIMARY
- POWER LINE
- EMERGENCY CIRCUIT
- TELEPHONE LINE
- WIREMOLD
- DATA LINE

DARKER LINES INDICATE NEW
 LIGHTER LINES W/ (E) INDICATE EXISTING

HASH MARKS = # OF WIRES
 (NO HASH MARKS = 2 WIRES + 1 GRND)
 HASH MARKS = # OF WIRES W/ HARD WIRED GROUND

- LIGHTING FIXTURE-FLUORESCENT-RECESSED MOUNT
- LIGHTING FIXTURE-FLUORESCENT-SURFACE MOUNT
- LIGHTING FIXTURE-FLUORESCENT-W/ EMERGENCY BATTERY INVERTER
- LIGHTING FIXTURE-FLUORESCENT-ON EMERGENCY CIRCUIT
- LIGHTING FIXTURE-EXISTING SHOWN DOTTED (TYPICAL TO REMOVE)
- LIGHTING FIXTURE-EXISTING SHOWN LIGHT LINED (E) (TYPICAL TO REMAIN)

- LIGHTING FIXTURE-WALL MOUNT
- LIGHTING FIXTURE-RECESSED
- LIGHT/FAN FIXTURE-RECESSED
- LIGHTING FIXTURE-CEILING MOUNT
- LIGHTING FIXTURE-CEILING MOUNT
- LIGHTING FIXTURE-WALL SCNCE
- LIGHTING FIXTURE-BRACKET MOUNT

- LIGHTING FIXTURE-EMERGENCY BATTERY PACK
- LIGHTING FIXTURE-EMERGENCY BATTERY PACK

POLE MOUNTED LIGHTING FIXTURE AS TYPED REFER TO POLE BASE DETAIL 'PB'

- LIGHTING FIXTURE- SPECIAL REFER TO SPEC'S
- OCCUPANCY SENSOR
- OCCUPANCY SENSOR - 360°

- OCCUPANCY SENSOR RELAY
- DUPLEX CONVENIENCE OUTLET (DCD)
- SAFETY TYPE DCD

- DCD 120V W/ GROUND FAULT PROTECTION
- DCD 120V W/ ARC FAULT PROTECTION
- QUADPLEX CONVENIENCE OUTLET
- DEDICATED DCD (HARD WIRE GROUND)
- DEDICATED DCD (SPECIFIC EQUIPMENT)
- OUTLET 208V - AS NOTED

TWO SECTION ALUMINUM POWER/COMM POLE W/ QUAD OUTLET, "N" TELE/DATA OUTLETS WHERE "N" = THE NUMBER OF OUTLETS/CABLES.

- JUNCTION BOX
- FLOOR MOUNTED OUTLET - AS NOTED
- CONNECTION TO EQUIPMENT
- MOTOR DRIVEN DEVICE

- * = DEVICE OVER COUNTER
- LIGHTING SWITCH - SINGLE POLE
- LIGHTING SWITCH - SECTION AS NOTED
- LIGHTING SWITCH - THREE WAY
- LIGHTING SWITCH - FOUR WAY
- LIGHTING SWITCH - DIMMER
- LIGHTING SWITCH - KEYED
- LIGHTING SWITCH - PILOT LIGHTED
- LIGHTING SWITCH - MOMENTARY CONTACT
- SMR SWITCH - MOTOR RATED
- SOS OR SDC SWITCH - WITH OCCUPANCY SENSOR

- SECURITY MOTION DETECTOR
- SECURITY CAMERA
- EMERGENCY CALL STATION
- DOOR POSITION SENSOR

- ELECTRICAL PANEL W/NAME (TYPICAL TO NEW)
- ELECTRICAL PANEL EXISTING W/NAME (TYPICAL TO REMOVE)
- ELECTRICAL PANEL EXISTING W/NAME (E) (TYPICAL TO REMAIN)
- FIRE ALARM SIGNAL LIGHT AND HORN (MINI HORN STROBE LOWER db)
- FIRE ALARM SIGNAL LIGHT AND HORN ('pezzio' sound)
- FIRE ALARM SPEAKER/STROBE
- FIRE ALARM PULL STATION
- FIRE ALARM HORN
- FIRE ALARM SIGNAL LIGHT
- FIRE ALARM SIGNAL LIGHT AND HORN
- FIRE ALARM SMOKE DETECTOR
- FIRE ALARM DUCT DETECTOR
- FIRE ALARM HEAT DETECTOR
- FIRE ALARM DETECTOR W/ A = AUX. CONTACTS
- FIRE ALARM MAGNETIC DOOR HOLDER
- FIRE ALARM EQUIPMENT CONNECTION
- FIRE ALARM SMOKE DAMPER
- FIRE ALARM DETECTOR CARBON MONOXIDE
- FIRE ALARM DETECTOR W/ AB = ALARM BASE
- CARBON MONOXIDE OUTLET
- KEY PAD OUTLET
- CARD READER LOCATION / VERIFY PRIOR COMMUNICATIONS OUTLET
- VOLUME CONTROL OUTLET
- CLOCK
- CLOCK-SPEAKER COMBINATION
- CLASS BELL
- CLASSROOM SOUND REINFORCEMENT SPEAKER
- I/C SPEAKER
- PUSH BUTTON / CALL BACK SWITCH/WITH SPEAKER
- PUSH BUTTON / CALL BACK SWITCH
- PUSH BUTTON / START-STOP
- DOOR BELL w/ STROBE per ADA
- DATA OUTLET
- TELEPHONE/DATA OUTLET
- PRINTER OUTLET
- TELEVISION OUTLET
- AUDIO JACK OUTLET
- VIDEO OUTLET
- TELEPHONE OUTLET
- INTERCOM OUTLET
- DISCONNECT W/FUSES
- DISCONNECT
- PHOTO ELECTRIC CELL
- TIME CLOCK
- NIGHT LIGHT
- WEATHER PROOF
- WIRE GUARD
- E. C. ELECTRICAL CONTRACTOR
- BKR CIRCUIT BREAKER
- PEC PHOTO ELECTRIC CELL
- NEC NATIONAL ELECTRICAL CODE
- W/ WITH
- DCD DUPLEX CONVENIENCE OUTLET
- CKT CIRCUIT
- AFF ABOVE FINISH FLOOR
- BFG BELOW FINISHED GRADE
- CIRCUIT BREAKER ENCLOSURE st = SHUNT TRIP
- K INSTALLED IN THE KICK AREA
- (E) EXISTING ELECTRICAL DEVICE (TYPICAL TO REMAIN)
- FIXTURE TYPE - LETTER UNDERLINED
- NUMBERED HEX SYMBOLS: REFER TO MECHANICAL EQUIPMENT CONNECTION SCHEDULE
- LETTERED HEX SYMBOLS: REFER TO SHEET NOTES
- OTHER SYMBOL SHAPES: REFER TO OTHER EQUIPMENT CONNECTION SCHEDULES AS NEEDED.

NOTE:
 DOTTED SYMBOLS REFER TO DEVICES TO BE REMOVED. DASHED OR DOTTED CONDUIT LINES ON DEMO SHEETS ARE TO BE VERIFIED BEFORE REMOVAL. THESE ARE USUALLY INDICATIONS OF SURFACE OR UNDERGROUND RAN CONDUIT.

1" CONDUIT FROM DEVICE BOX TO ACCESSIBLE CEILING SPACE OR AS NOTED.
 CONDUIT HOME RUN FROM DEVICE BOX TO PANEL AS CIRCUITED.

- FAP FIRE ALARM PANEL
- FMC FIREMAN PHONE COMMAND MIC. ANNUNCIATOR

MARK	DATE	DESCRIPTION

COLLINS ARCHITECTURAL GROUP, P.S.
 950 12th AVE., SUITE 200
 LONGVIEW, WA 98652
 PHONE: 360-425-0000
 E-MAIL: CRAIG@COLLINSARCHGROUP.COM

RONALD D. ATMAN
 BOARD OF WASHINGTON
 REGISTERED PROFESSIONAL ENGINEER
 EXPIRES APRIL 5, 2016

**COLUMBIA HEIGHTS ELEMENTARY
 FIRE ALARM REPLACEMENT**

BID SET
 12-29-2015

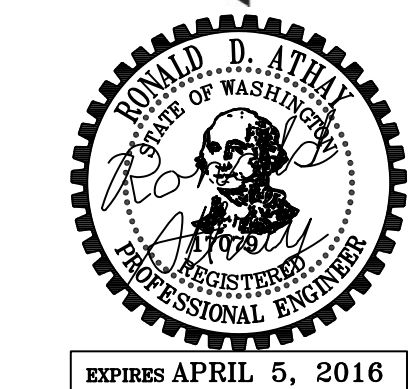
SYMBOL LIST

2015-488
 SHEET NO.

FA0.0

LONGVIEW WA 98665

MARK	DATE	DESCRIPTION



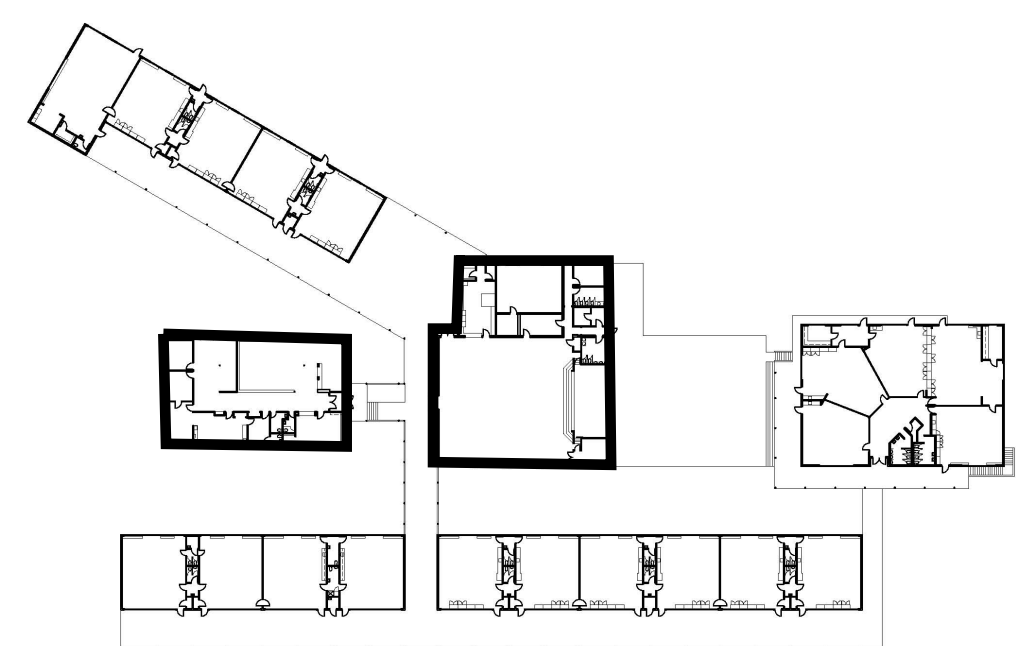
**COLUMBIA HEIGHTS ELEMENTARY
 FIRE ALARM REPLACEMENT**

BID SET
 12-29-2015

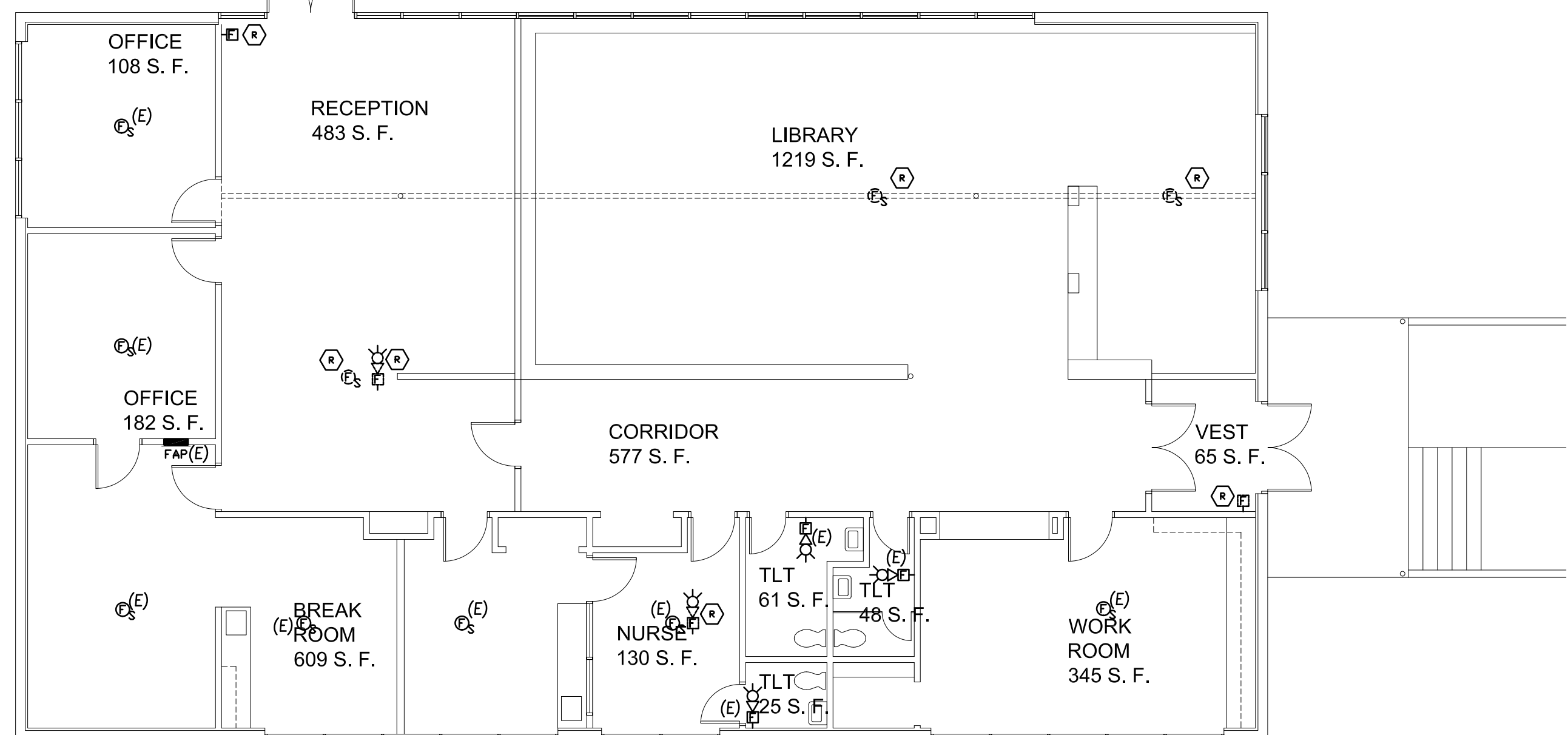
ADMIN. & GYM BLDG.
 EX. F.A. FLOOR PLAN

2015-488
 SHEET NO.

FA1.0

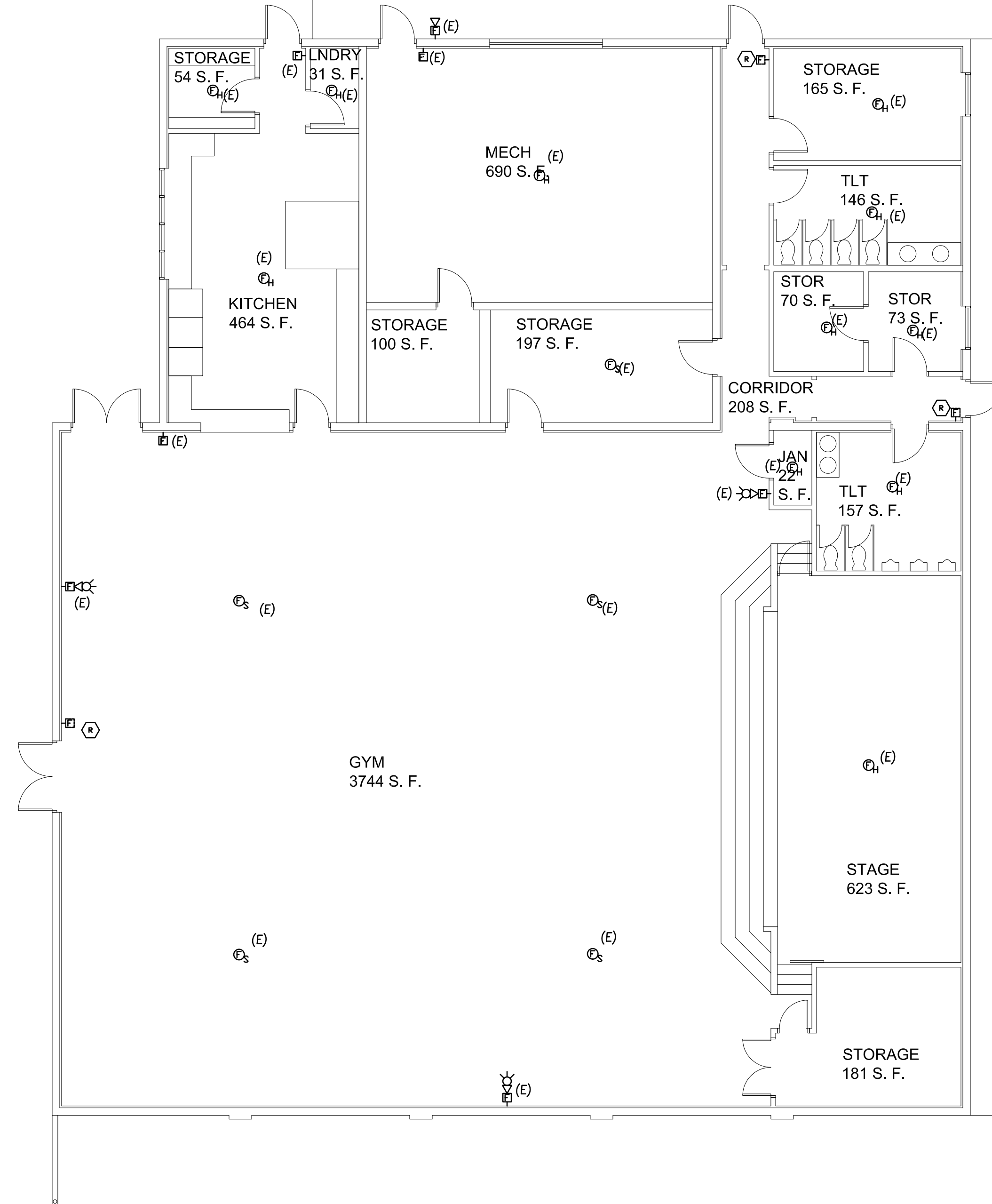


HEX. NOTES:
 (E) DISCONNECT AND REMOVE EXISTING FIRE ALARM DEVICE AND ABANDONED WIRING.
 PROVIDE STAINLESS STEEL COVERPLATE. PATCH EXISTING CEILING TO MATCH SURROUNDING SURFACE.
 PAINT OUT TO MATCH EXISTING SURFACES.



1 ADMIN. BLDG. EXISTING FIRE ALARM FLOOR PLAN
 FA1.0 SCALE: 1/8" = 1'-0"

HEX. NOTES:
 (E) DISCONNECT AND REMOVE EXISTING FIRE ALARM DEVICE AND ABANDONED WIRING.
 PROVIDE STAINLESS STEEL COVERPLATE. PATCH EXISTING CEILING TO MATCH SURROUNDING SURFACE.
 PAINT OUT TO MATCH EXISTING SURFACES.

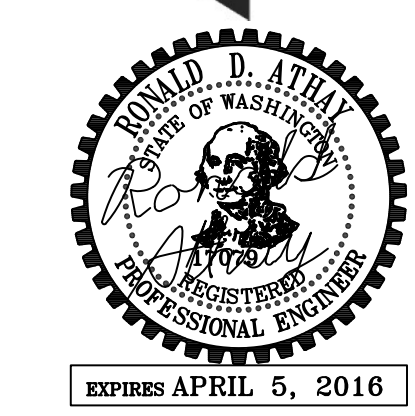


2 GYM BLDG. EXISTING FIRE ALARM FLOOR PLAN
 FA1.0 SCALE: 1/8" = 1'-0"

LONGVIEW WA 98665

MARK	DATE	DESCRIPTION

COLLINS
 ARCHITECTURAL GROUP, P.S.
 950 12th AVE., SUITE 200
 LONGVIEW, WA 98632
 PHONE: 360-425-0000
 E-MAIL: CRAIG@COLLINSARCHGROUP.COM



EXPIRES APRIL 5, 2016

COLUMBIA HEIGHTS ELEMENTARY
 FIRE ALARM REPLACEMENT

BID SET
 12-29-2015

C.R. BLDG. EXISTING
 F.A. FLOOR PLAN

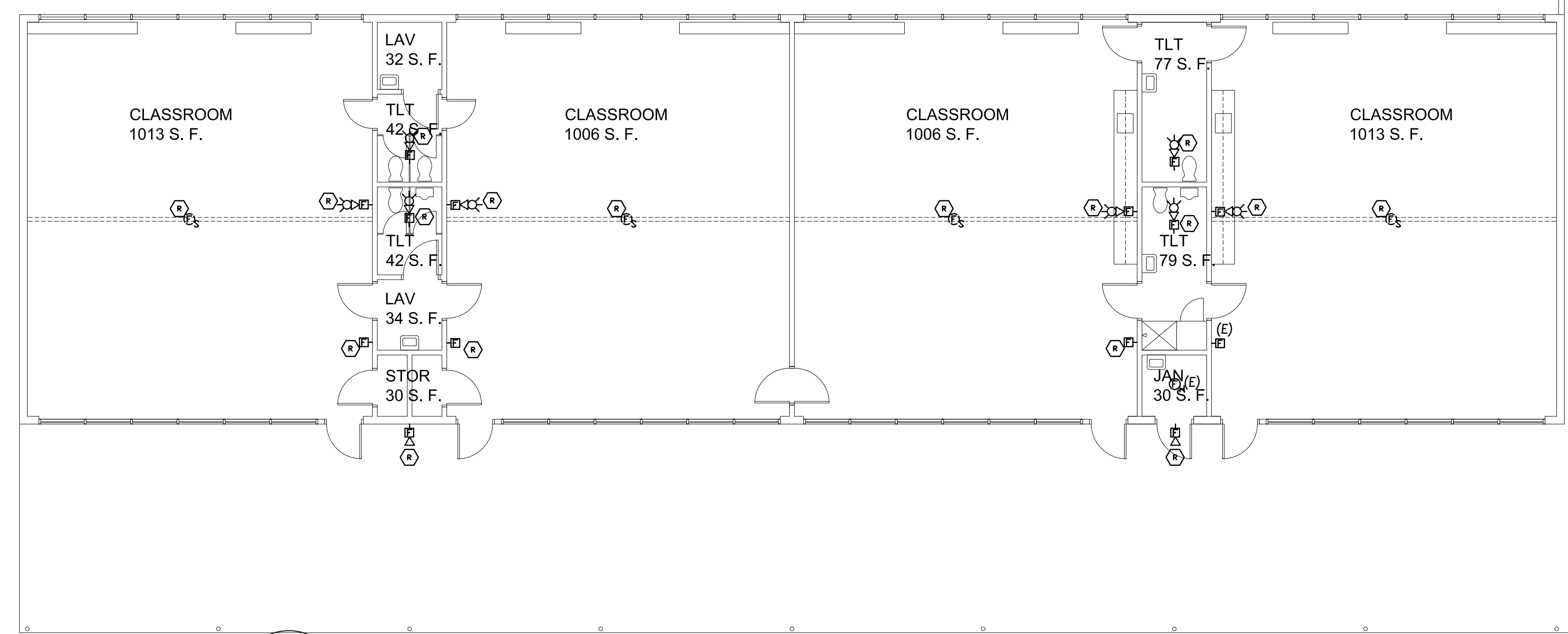
2015-488
 SHEET NO.

FA3.0

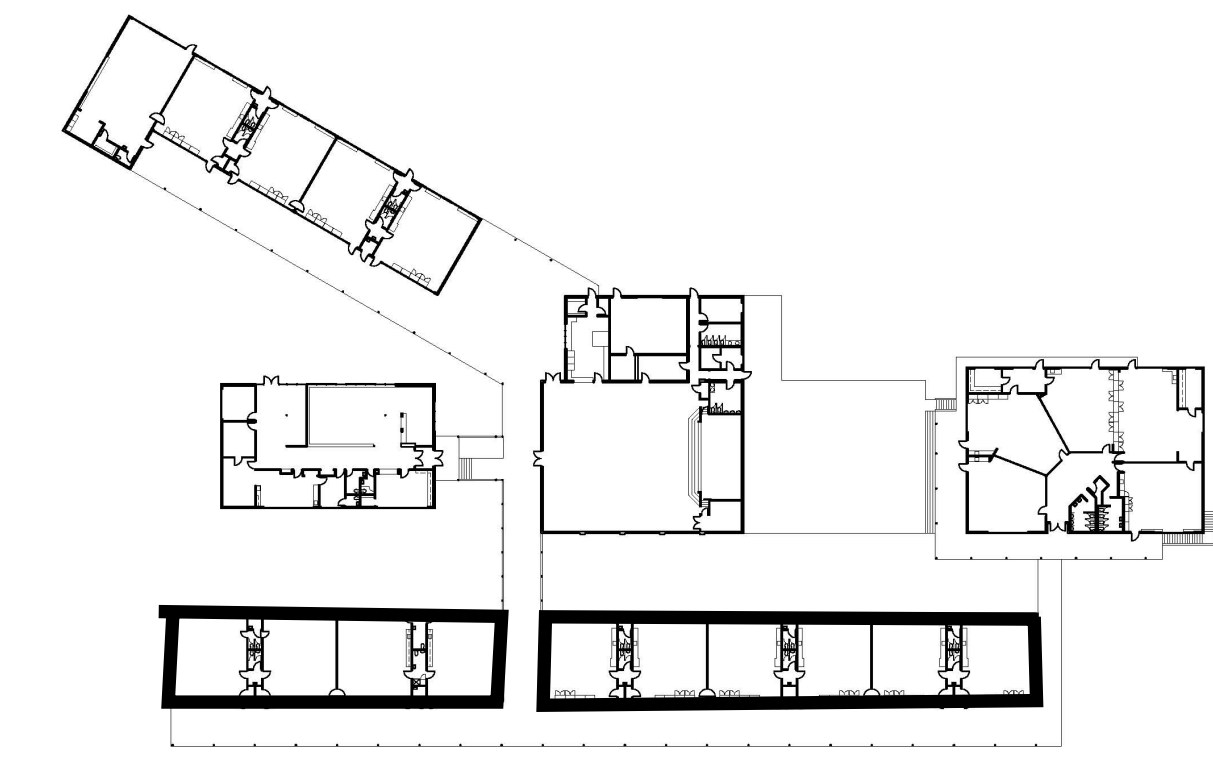
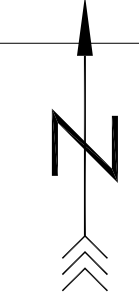
LONGVIEW WA 98685

HEX. NOTES:

- Ⓧ DISCONNECT AND REMOVE EXISTING FIRE ALARM DEVICE AND ABANDONED WIRING. PROVIDE STAINLESS STEEL COVERPLATE. PATCH EXISTING CEILING TO MATCH SURROUNDING SURFACE. PAINT OUT TO MATCH EXISTING SURFACES.

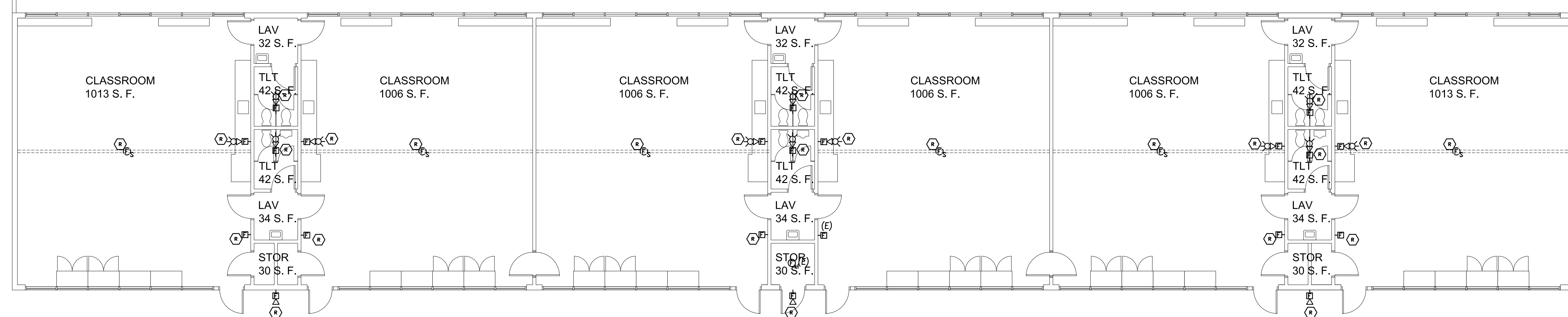


1 CLASSROOM BLDG. EXISTING FIRE ALARM FLOOR PLAN
 FA3.0 SCALE: 1/8" = 1'-0"

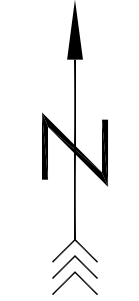


HEX. NOTES:

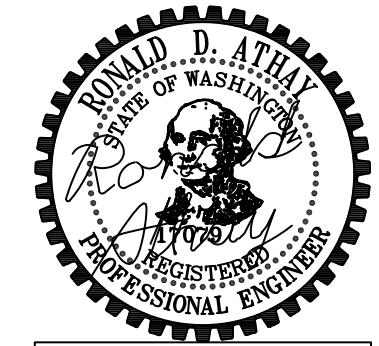
- Ⓧ DISCONNECT AND REMOVE EXISTING FIRE ALARM DEVICE AND ABANDONED WIRING. PROVIDE STAINLESS STEEL COVERPLATE. PATCH EXISTING CEILING TO MATCH SURROUNDING SURFACE. PAINT OUT TO MATCH EXISTING SURFACES.



2 CLASSROOM BLDG. EXISTING FIRE ALARM FLOOR PLAN
 FA3.0 SCALE: 1/8" = 1'-0"



MARK	DATE	DESCRIPTION



EXPIRES APRIL 5, 2016

**COLUMBIA HEIGHTS ELEMENTARY
 FIRE ALARM REPLACEMENT**

BID SET
 12-29-2015

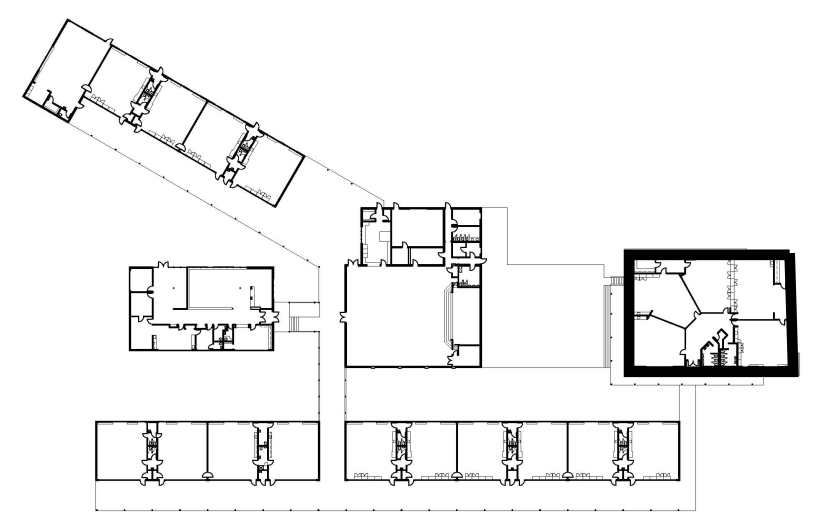
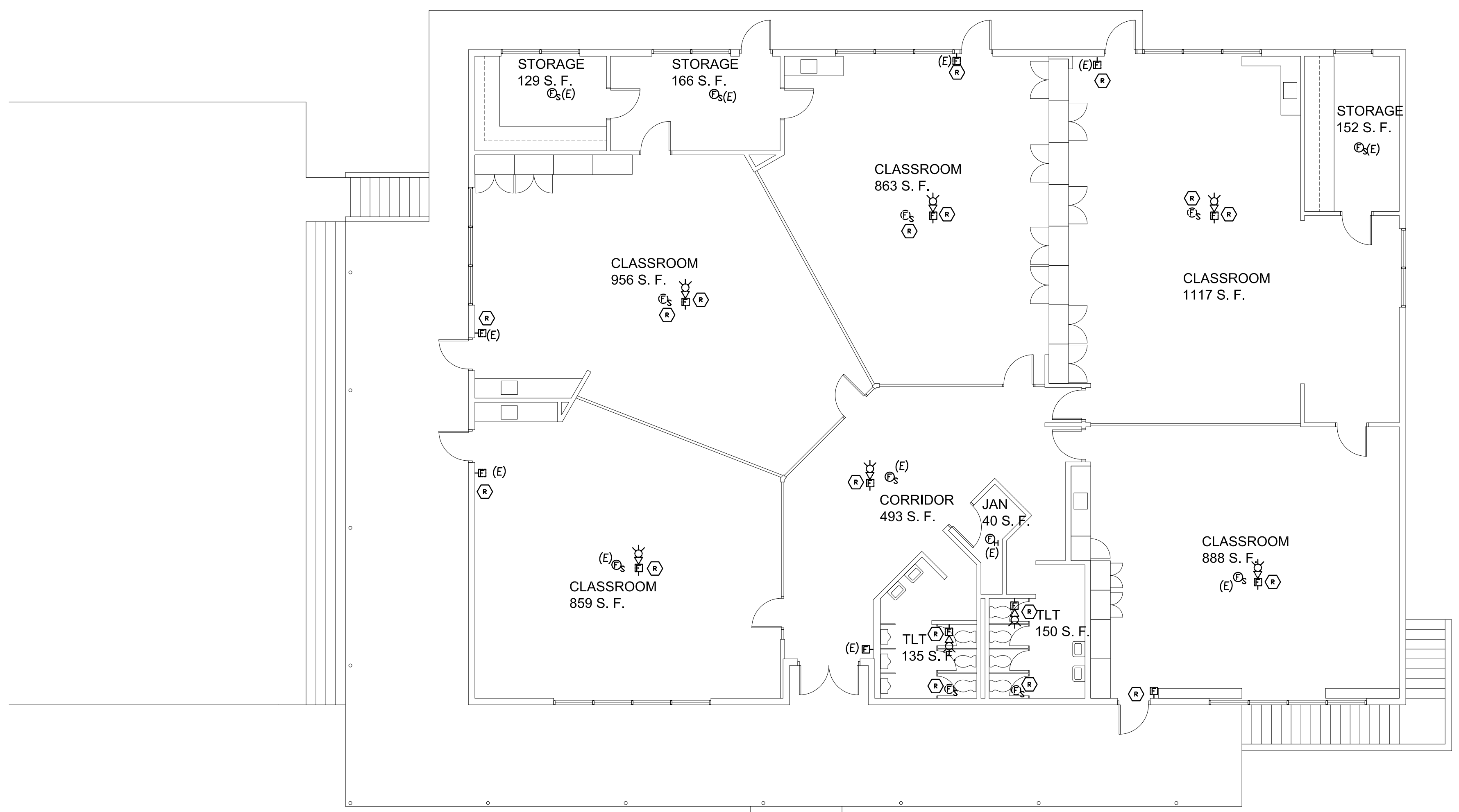
C.R. BLDG. EXIST.
 F.A. FLOOR PLAN

2015-488
 SHEET NO.

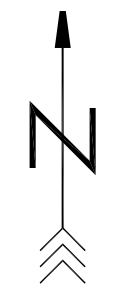
FA4.0

HEX. NOTES:

- Ⓜ DISCONNECT AND REMOVE EXISTING FIRE ALARM DEVICE AND ABANDONED WIRING. PROVIDE STAINLESS STEEL COVERPLATE. PATCH EXISTING CEILING TO MATCH SURROUNDING SURFACE. PAINT OUT TO MATCH EXISTING SURFACES.

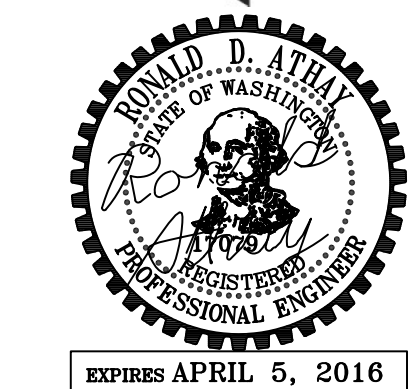


1 CLASSROOM BUILDING EXISTING FIRE ALARM FLOOR PLAN
 FA4.0 SCALE: 1/8" = 1'-0"



LONGVIEW WA 98665

MARK	DATE	DESCRIPTION



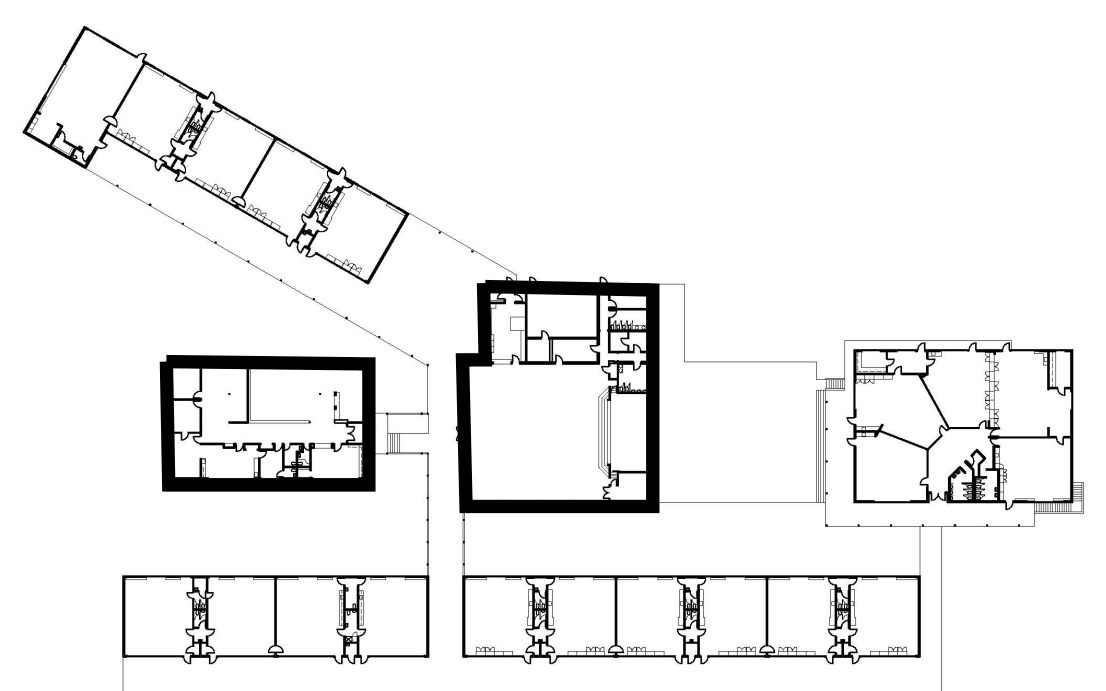
**COLUMBIA HEIGHTS ELEMENTARY
 FIRE ALARM REPLACEMENT**

BID SET
 12-29-2015

ADMIN & GYM BLDG.
 NEW F.A. FLOOR PLAN

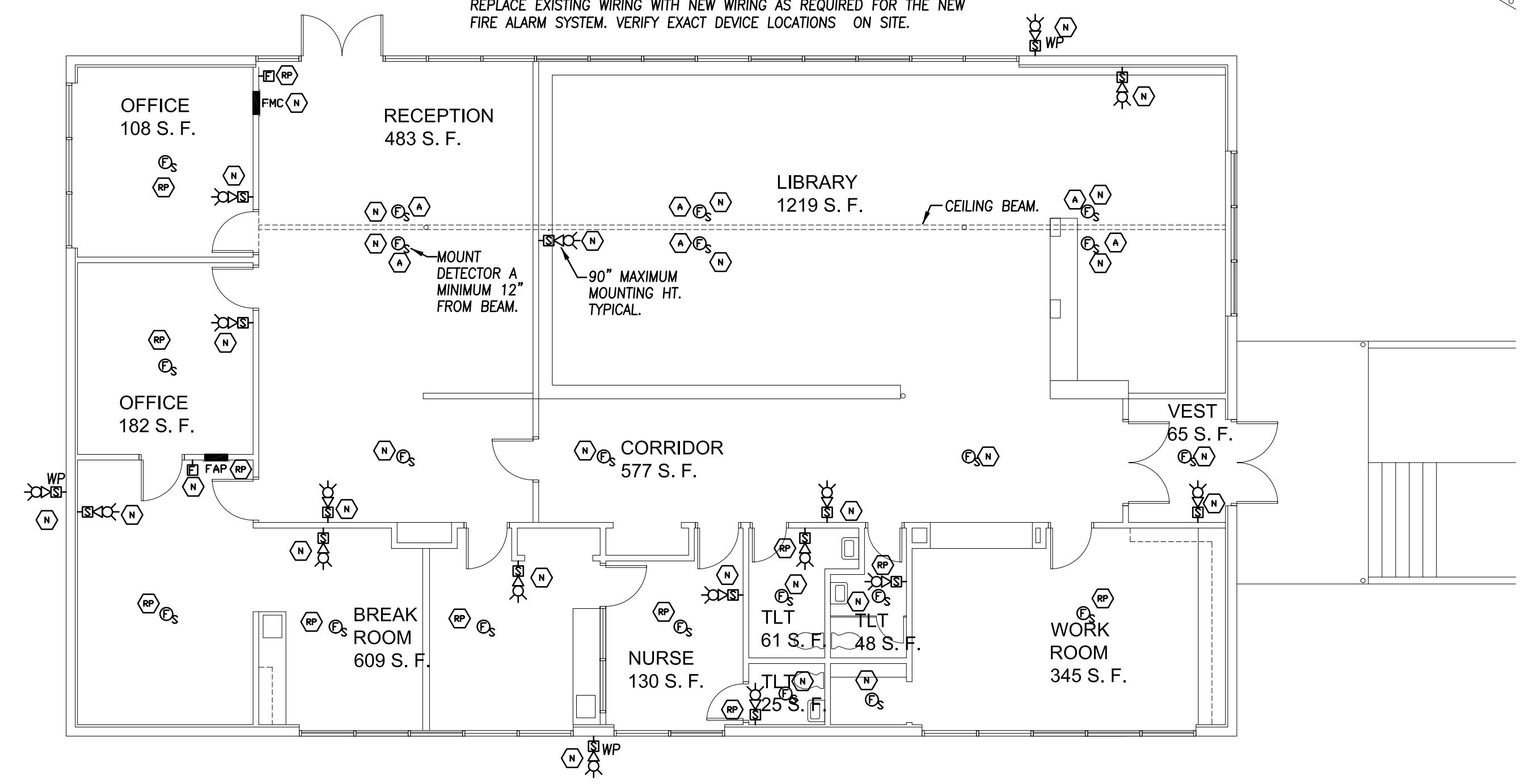
2015-488
 SHEET NO.

FA5.0



- HEX. NOTES:**
- (A) COORDINATE INSTALLATION LOCATION WITH EXISTING HVAC EQUIPMENT.
 - (N) INSTALL NEW DEVICE. PROVIDE NEW DEVICE AND WIRING AS SPECIFIED.
 - (M) REPLACE EXISTING DEVICE WITH NEW. REPLACE EXISTING WIRING WITH NEW WIRING AS REQUIRED FOR THE NEW FIRE ALARM SYSTEM.

- GENERAL NOTES:**
1. REPLACE EXISTING FIRE ALARM DUCT SMOKE DETECTOR DEVICES WITH NEW. REPLACE EXISTING WIRING WITH NEW WIRING AS REQUIRED FOR THE NEW FIRE ALARM SYSTEM. VERIFY EXACT DEVICE LOCATIONS ON SITE.

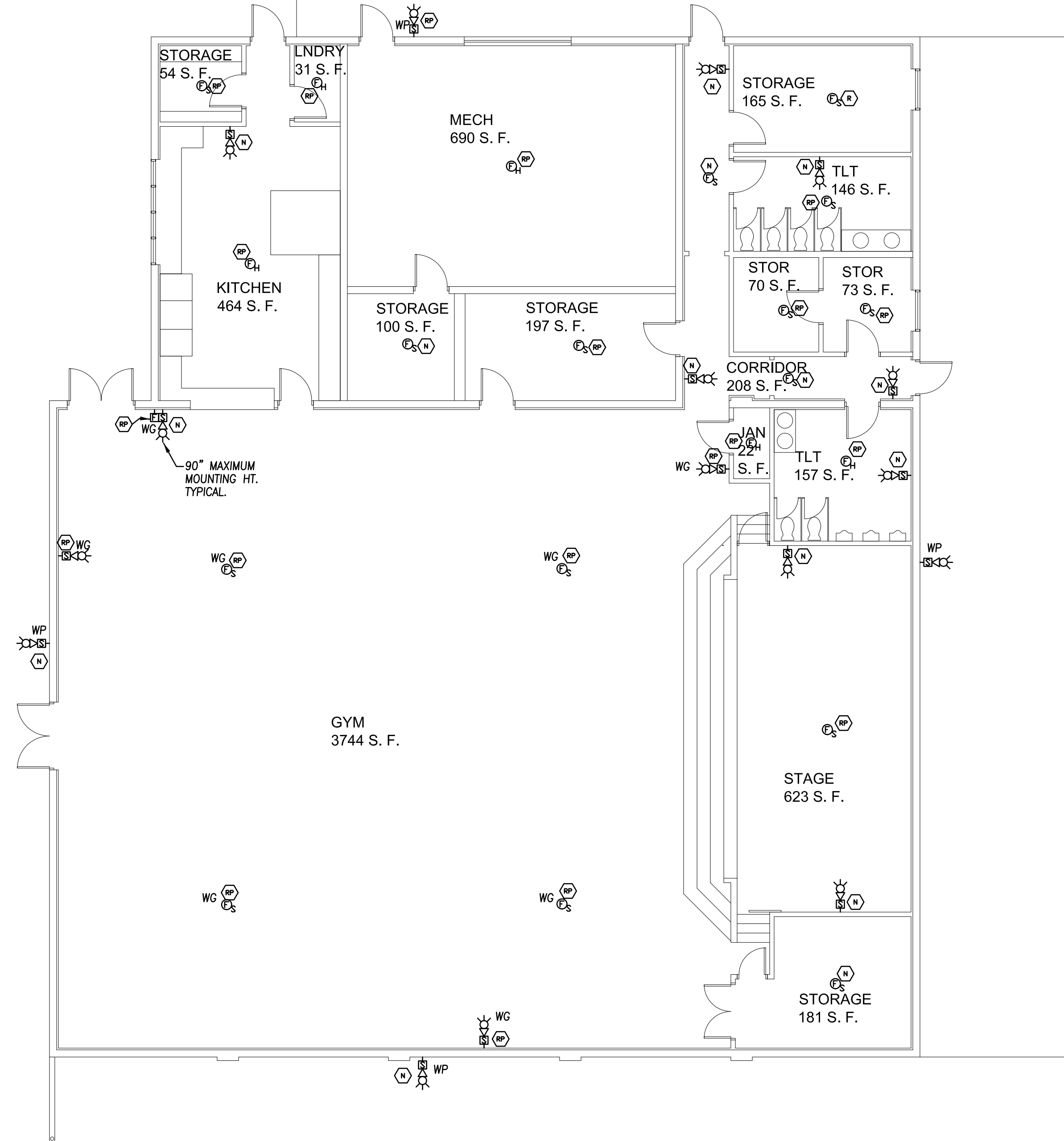


1 ADMIN. BLDG. NEW FIRE ALARM FLOOR PLAN
FA5.0 SCALE: 1/8" = 1'-0"



- HEX. NOTES:**
- (N) INSTALL NEW DEVICE. PROVIDE NEW DEVICE AND WIRING AS SPECIFIED.
 - (M) REPLACE EXISTING DEVICE WITH NEW. REPLACE EXISTING WIRING WITH NEW WIRING AS REQUIRED FOR THE NEW FIRE ALARM SYSTEM.

- GENERAL NOTES:**
1. REPLACE EXISTING FIRE ALARM DUCT SMOKE DETECTOR DEVICES WITH NEW. REPLACE EXISTING WIRING WITH NEW WIRING AS REQUIRED FOR THE NEW FIRE ALARM SYSTEM. VERIFY EXACT DEVICE LOCATIONS ON SITE.

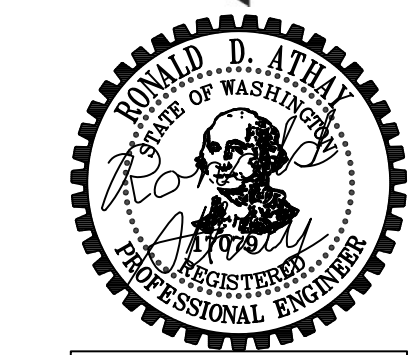


2 GYM BLDG. NEW FIRE ALARM FLOOR PLAN
FA5.0 SCALE: 1/8" = 1'-0"



MARK	DATE	DESCRIPTION

COLLINS
 ARCHITECTURAL GROUP, P.S.
 950 12th AVE., SUITE 200
 LONGVIEW, WA 98632
 PHONE: 360-425-0000
 E-MAIL: CRAIG@COLLINSARCHGROUP.COM



EXPIRES APRIL 5, 2016

**COLUMBIA HEIGHTS ELEMENTARY
 FIRE ALARM REPLACEMENT**

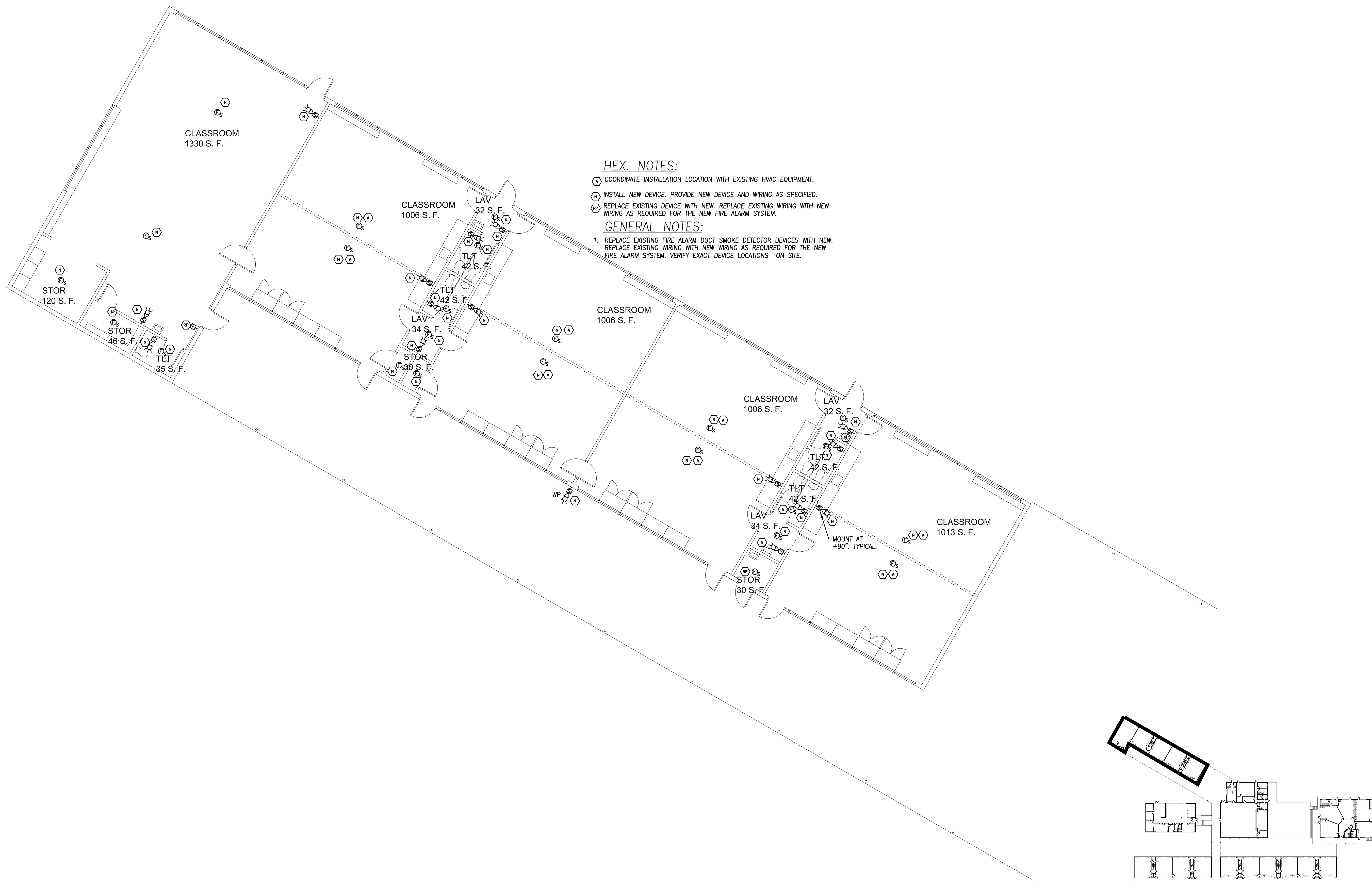
BID SET
 12-29-2015

C.R. BLDG. NEW
 F.A. FLOOR PLAN

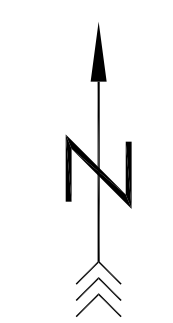
2015-488
 SHEET NO.

FA6.0

LONGVIEW WA 98665

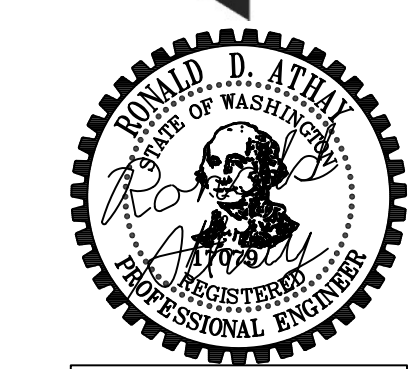


1 CLASSROOM BUILDING NEW FIRE ALARM FLOOR PLAN
 FA6.0 SCALE: 1/8" = 1'-0"



MARK	DATE	DESCRIPTION

COLLINS
 ARCHITECTURAL GROUP, P.S.
 950 12th AVE., SUITE 200
 LONGVIEW, WA 98632
 PHONE: 360-425-0000
 E-MAIL: CRAIG@COLLINSARCHGROUP.COM



EXPIRES APRIL 5, 2016

**COLUMBIA HEIGHTS ELEMENTARY
 FIRE ALARM REPLACEMENT**

BID SET
 12-29-2015

C.R. BLDG. NEW
 F.A. FLOOR PLAN

2015-488
 SHEET NO.

FA7.0

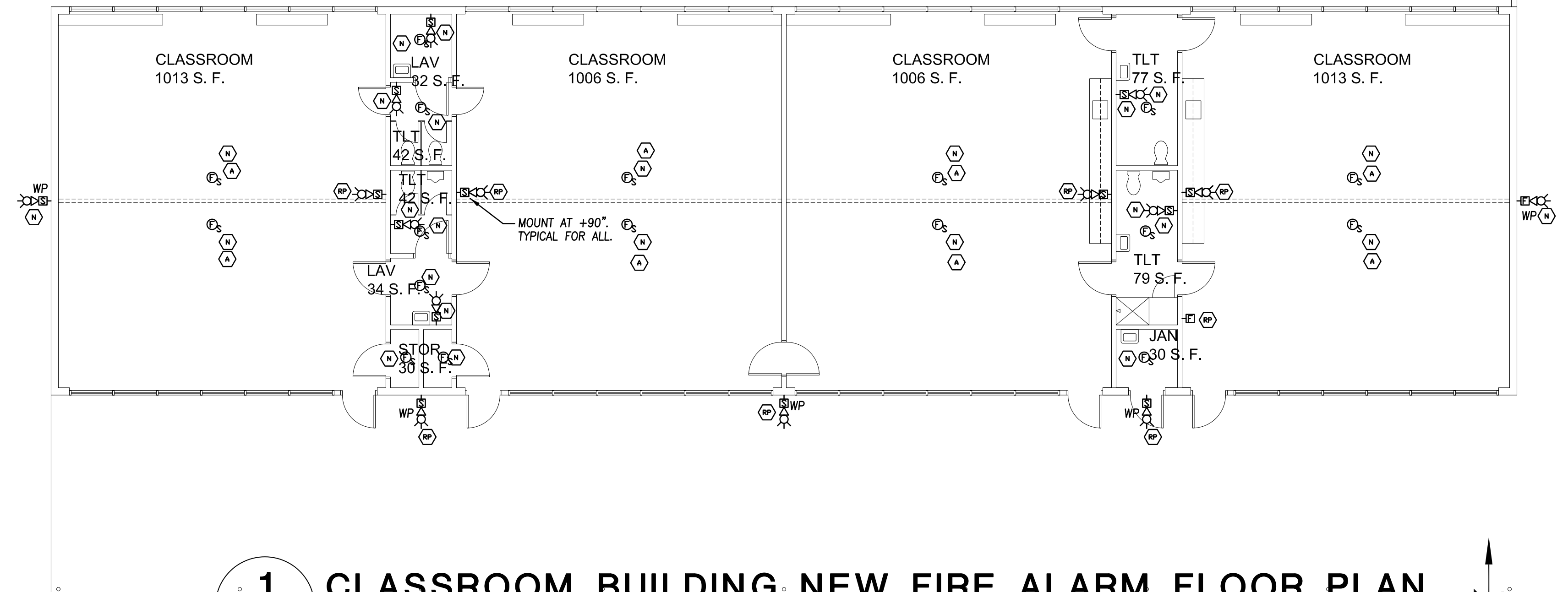
LONGVIEW WA 98685

HEX. NOTES:

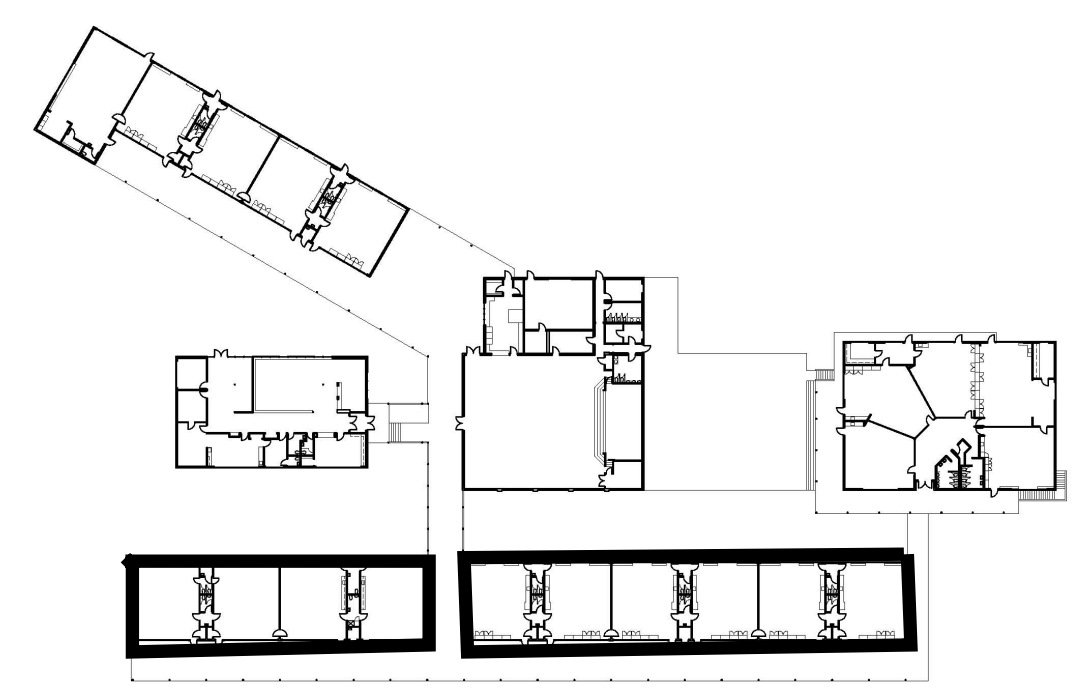
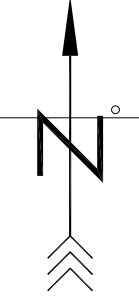
- (A) COORDINATE INSTALLATION LOCATION WITH EXISTING HVAC EQUIPMENT.
- (N) INSTALL NEW DEVICE. PROVIDE NEW DEVICE AND WIRING AS SPECIFIED.
- (M) REPLACE EXISTING DEVICE WITH NEW. REPLACE EXISTING WIRING WITH NEW WIRING AS REQUIRED FOR THE NEW FIRE ALARM SYSTEM.

GENERAL NOTES:

1. REPLACE EXISTING FIRE ALARM DUCT SMOKE DETECTOR DEVICES WITH NEW. REPLACE EXISTING WIRING WITH NEW WIRING AS REQUIRED FOR THE NEW FIRE ALARM SYSTEM. VERIFY EXACT DEVICE LOCATIONS ON SITE.



1 CLASSROOM BUILDING NEW FIRE ALARM FLOOR PLAN
 FA7.0 SCALE: 1/8" = 1'-0"

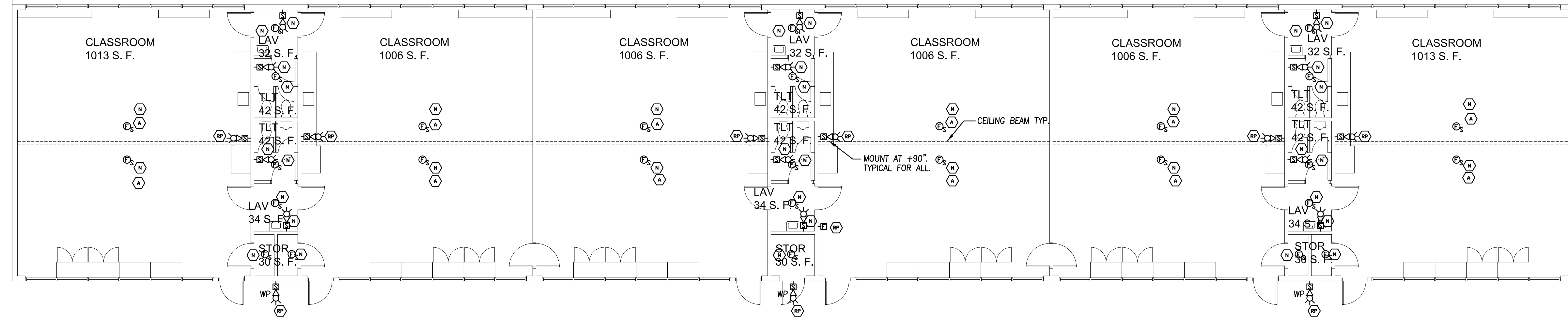


HEX. NOTES:

- (A) COORDINATE INSTALLATION LOCATION WITH EXISTING HVAC EQUIPMENT.
- (N) INSTALL NEW DEVICE. PROVIDE NEW DEVICE AND WIRING AS SPECIFIED.
- (M) REPLACE EXISTING DEVICE WITH NEW. REPLACE EXISTING WIRING WITH NEW WIRING AS REQUIRED FOR THE NEW FIRE ALARM SYSTEM.

GENERAL NOTES:

1. REPLACE EXISTING FIRE ALARM DUCT SMOKE DETECTOR DEVICES WITH NEW. REPLACE EXISTING WIRING WITH NEW WIRING AS REQUIRED FOR THE NEW FIRE ALARM SYSTEM. VERIFY EXACT DEVICE LOCATIONS ON SITE.



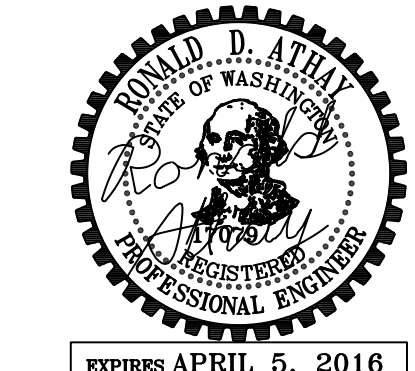
2 CLASSROOM BUILDING NEW FIRE ALARM FLOOR PLAN
 FA7.0 SCALE: 1/8" = 1'-0"



DATE: 12-29-2015
 DRAWN BY: JAC

MARK	DATE	DESCRIPTION

COLLINS
 ARCHITECTURAL GROUP, P.S.
 950 12th AVE., SUITE 200
 LONGVIEW, WA 98632
 PHONE: 360-425-0000
 E-MAIL: CRAIG@COLLINSARCHGROUP.COM



EXPIRES APRIL 5, 2016

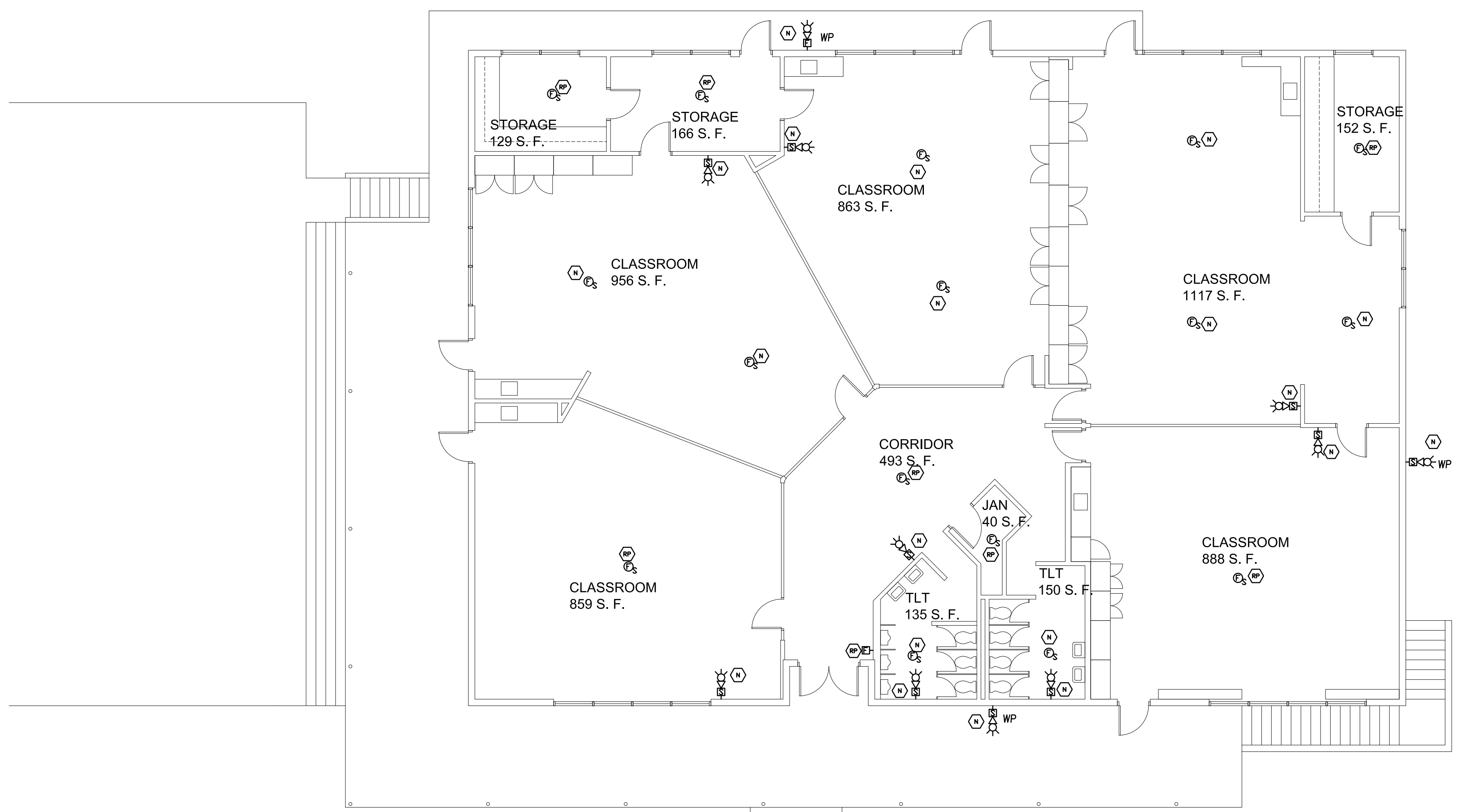
**COLUMBIA HEIGHTS ELEMENTARY
 FIRE ALARM REPLACEMENT**

BID SET
 12-29-2015

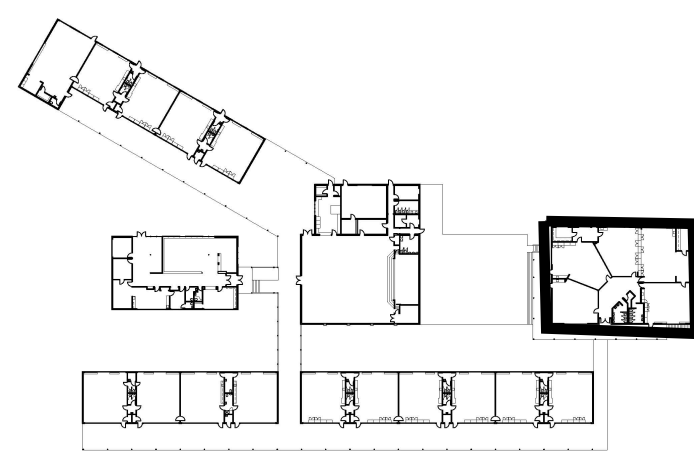
C.R. BLDG. NEW F.A.
 FLOOR PLAN

2015-488
 SHEET NO.

FA8.0



- HEX. NOTES:
- (N) INSTALL NEW DEVICE. PROVIDE NEW DEVICE AND WIRING AS SPECIFIED.
 - (R) REPLACE EXISTING DEVICE WITH NEW. REPLACE EXISTING WIRING WITH NEW WIRING AS REQUIRED FOR THE NEW FIRE ALARM SYSTEM.
- GENERAL NOTES:
1. REPLACE EXISTING FIRE ALARM DUCT SMOKE DETECTOR DEVICES WITH NEW. REPLACE EXISTING WIRING WITH NEW WIRING AS REQUIRED FOR THE NEW FIRE ALARM SYSTEM. VERIFY EXACT DEVICE LOCATIONS ON SITE.



1 CLASSROOM BUILDING NEW FIRE ALARM FLOOR PLAN
 FA8.0 SCALE: 1/8" = 1'-0"



LONGVIEW WA 98685