

# Preschool Orientation

Preschool is  
**SOO Sweet!**

2026-2027 School Year



# Our Preschool Team



**Mrs. Dilkes &  
Mrs. Reynolds**

Co-Directors of the  
Preschool



**Our Teachers**

Mrs. Adelhoch  
Mrs. Allen  
Mrs. Kasper  
Mrs. Maney  
Ms. Nause



**Community Involvement  
Parent Specialist**

Mrs. DeDuca is a  
speech language  
therapist in our district.  
She serves as a liaison.

*love!*

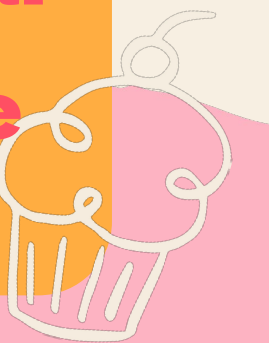
# Preschool Information

**We are part of  
the Preschool  
Expansion Aid  
Grant**

**We have 5  
classes with no  
more than 15  
students per  
class**

**Each classroom  
has one teacher  
and one  
paraprofessional  
and is mixed age**

**School runs from 9:10-3:10**





# Drop Off

## Bus

Buses drop off in the circle between 9:00-9:10

## Parent Drop Off

Pull into the parking lot and park your car. Walk your child to the front door and help your child get in designated line.

## Late comers

Park and sign in at the main office

# **A Day In the Life of a Preschooler**

**Morning Meeting**

**Kickstart Literacy**

**Snack**

**Small Group (Reading, Writing, Math, Fine Motor)**

**Outdoor/Gross Motor**

**Lunch**

**Rest Time**

**Free Choice**

**Library/Music**

**Read Aloud**





# Snack

Please pack a healthy snack each day. Students are encouraged to bring water bottles that can be refilled throughout the day at our bottle filler stations.

# Creative Curriculum

- [NJ Preschool Teaching & Learning Standards](#)
- [Creative Curriculum](#)
- [Kickstart Literacy](#)
- [Handwriting Without Tears Formation](#)



# Our Units of Study for 2026-2027

September: Our Classroom

October: Trees

November: Boxes

December: Reduce, Reuse, Recycle

January: Buildings

February: The Human Body

March: The Weather

April: Restaurants

May: Gardening

June: Our Year Wrap Up



# Pick Up

## Buses

Buses pick up in the circle starting at 3:05.

## Early/Late

If you are picking your child up early (or late by accident) please come to the office to sign your child out.

## Parent Pick up

Park your car in the lot and walk to the front door. Each child will be released by class.





# Pick up Patrol

We use Pickup Patrol to help us keep our dismissal safe and organized.

It will be the parent responsibility to enter dismissal plans into PuP every day. If it is the same every day, then you may enter it once and have it repeat. But if it changes depending on the day, this is a BIG habit you will need to develop.



# Attendance

**We take attendance very seriously. When your child is going to be absent, you must call the school nurse and leave a message before 9 am.**

# Nurse's Information

- **Maia Febrero**
- [mfebrero@andoverregional.org](mailto:mfebrero@andoverregional.org)
- **973-315-5257 x203**
- **Proof of flu shot due by November 30**





# Toilet Training

Being toilet trained is not required but is highly recommended. We will send a survey out mid summer to see how many students are still training.

# Parent Involvement



## PTA/AREF/ ECAC/SEPAG

Consider getting involved in the many organizations that support our schools!



## Volunteering

Help with class trips, donating food, cleaning up parties.



## Committees

Some school wide committees require parent volunteers. Speak with Mrs. Dilkes



## Presentations and events

Come see us when we have various presentations and fun activities!



# Supply Lists

Will be on the website in the summer!

# Teacher Assignments

Teacher assignments will be announced in mid-August.



# Please have your children be prepared to:

M.M.



## Shoes

Please make sure your child can put on, secure, and take off their shoes

## Jackets

Put on, take off, secure their jackets/coats

## Snacks/ Lunch

Open their food containers and lunch box

## Backpack

Open, close, pack, unpack their backpacks

## Toilet

If they are toilet trained, please help ensure they can use the toilet by themselves





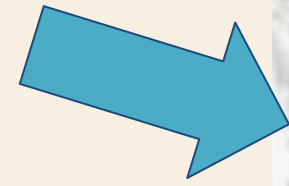
**Label**

**EVERYTHING**

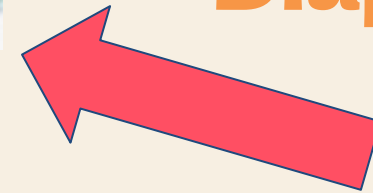


# Important Items

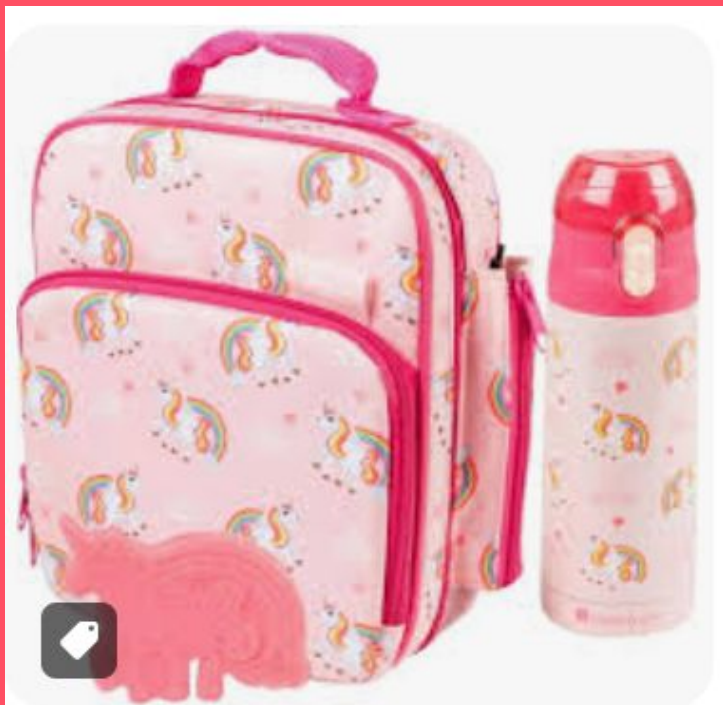
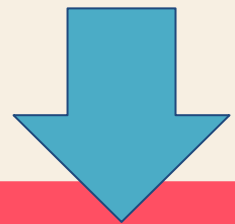
Change of Clothes



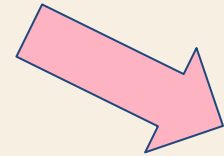
Diapering Supplies



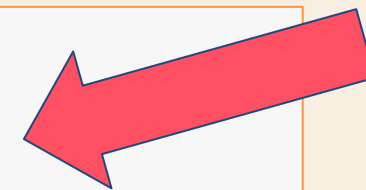
Lunch Box & Refillable Water Bottle



Backpack



Nap Mat



# Home Support

Here are the things we will be working on that you can support at home!

## Reading

Research shows that children who are read to everyday become better readers. Ask questions about what you read. Point out letters and words.

## Independence

Encourage independence with things like washing hands, dressing/undressing, blowing nose, toileting

## Math

Incorporate counting and math terms (equal, less, more) in conversation. Practice recognizing and writing numbers.

## Socialization

Participate in play groups. Practice sharing, being polite, respectful, and kind. Practice following directions, cleaning up, and accepting responsibility



## **Mornings**

Please make sure your child gets  
10-12 hours of sleep  
Eats a well balanced breakfast  
Wears comfy clothes/sneakers

## **Motor Skills**

Limit electronics  
Trace, write, draw, color,  
play with playdoh  
Puzzles  
Run, jump, hop, skip



## **Attention Skills**

Encourage attention with eyes and  
ears  
Follows 1 and 2 step directions  
Play card and board games  
Stay seated during meals

## **Separation**

Spend some time away from your  
child this summer  
Socialize in small groups  
Talk about what their day will look  
like



# **Save the Dates:**

**Preschool Meet and Greet**  
**August 27, 2026 at 2pm**

**First Day of School**  
**September 2, 2026**


**Back To School Night**  
**September 10, 2026**




# Contact Us

 219 Newton Sparta Rd, Newton

 973-315-5257

 [ndilkes@andoverregional.org](mailto:ndilkes@andoverregional.org) or [jreynolds@andoverregional.org](mailto:jreynolds@andoverregional.org)

 @fmbchargers

 [www.andoverregional.org](http://www.andoverregional.org)

LOVE!

