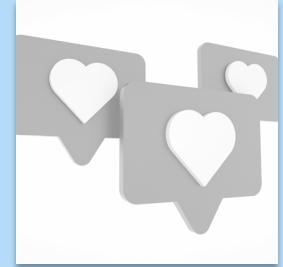


2026-2027
Phase 3 & 4
Middle School Model

May 19, 2026
MSM Community Forum

Ms. Nahed Badawy, Assistant Superintendent
Dr. David Cozart, Jr. Assistant Superintendent
Dr. Cicely Warren, Assistant Superintendent

District Strategic Plan Alignment



Transitioning to a middle school model will allow more appropriate alignment to the District's Strategic Plan of creating student-centered learning environments.

This model will create high-quality opportunities for educators to deliver research-based strategies that meet the developmental needs of students and educate the whole child.

What is the Elementary School Design (PreK-5 or K-5)?



Designs an environment specifically for young children

- Age-appropriate curriculum, activities, and resources
- Younger children are less exposed to older, potentially more mature behaviors, creating a space where they feel safer and more comfortable.



Limited grade span

- Reduces significant transitions within the school, helping children feel more stable
- Young students don't have to navigate interactions with significantly older peers, allowing for a more gradual transition from preschool to elementary grades



Teachers and staff can specialize in early childhood and elementary education

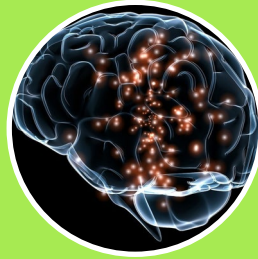
- Ensures developmentally appropriate practices with a concentrated focus on foundational academic, social, and emotional skills

What is the Middle School Design (Grades 6-8)?



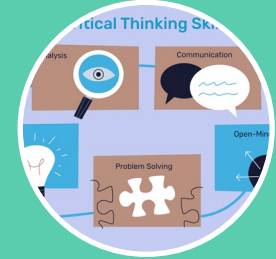
Focuses on the unique developmental needs of students in grades 6–8

- Offers programs and teaching methods tailored to early adolescents
- Creates a supportive environment for social, emotional, and academic growth during a critical transitional period



Students experience more independence and responsibility in preparation for high school

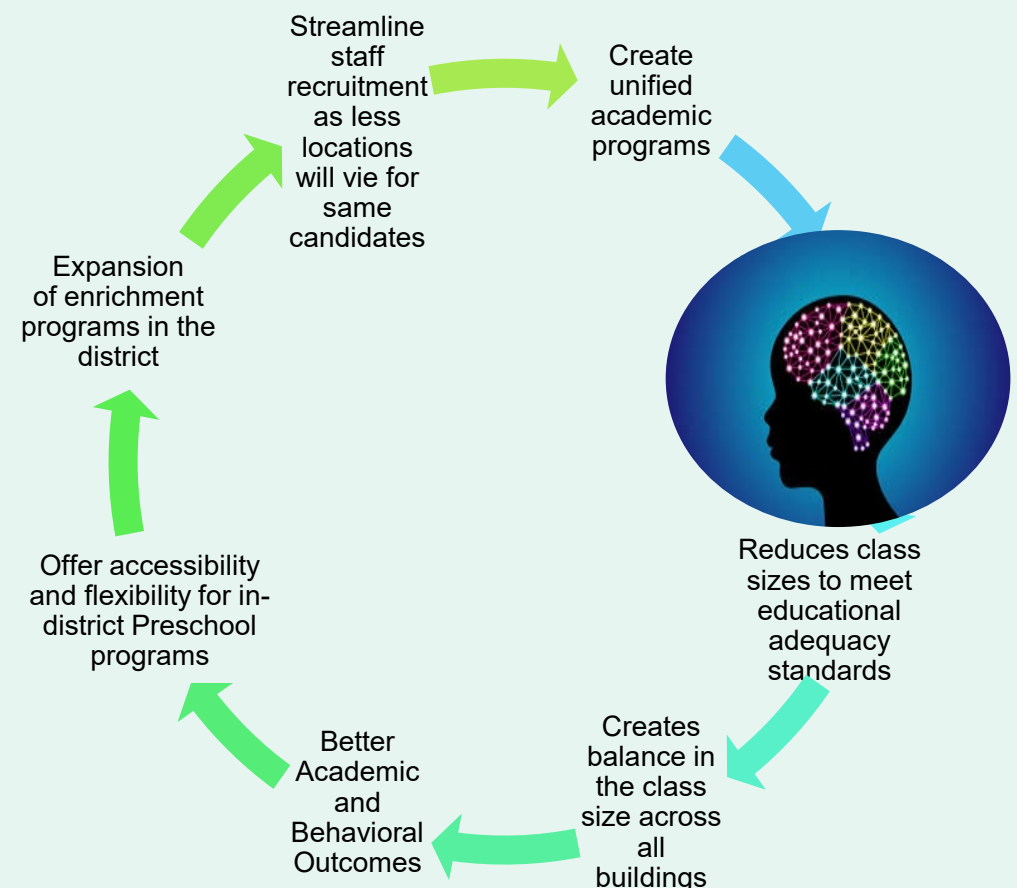
- Middle school models often mirror high school structures (e.g., lockers, changing classes), helping students adapt to a unique schedule (no longer a cohort), provides for the opportunity to have access to specialized courses
- Middle schools aim to provide challenging, exploratory, and relevant learning experiences that appeal to young adolescents. Schools that fully implement middle school practices experience positive results in academic performance (Alverson et al., America's Middle Schools, 2021)



Teachers and staff are trained in subject-specific areas to meet the needs of middle-grade learners

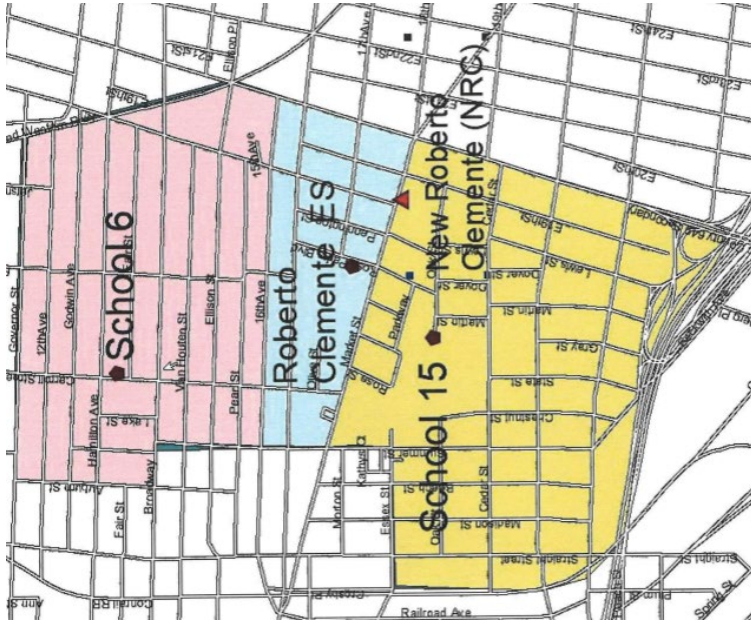
- Offers a broader curriculum, including electives like STEM, arts, and languages, which can enhance critical thinking skills, engagement and skill-building

Benefits of Elementary and Middle School Cohorts



Phase 3: 2026 - 2027
EWK

Phase 4: 2027-2028
PS 6, PS 15 and RC



EWK: Pre-K- 5

- General Education
- ESL
- Special Education



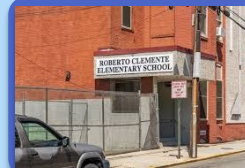
PS 6: Grades K-5

- General Education
- ESL
- Special Education



PS 15: K- 5

- General Education
- Spanish Bilingual and ESL
- Special Education



RC: Pre-K Hub



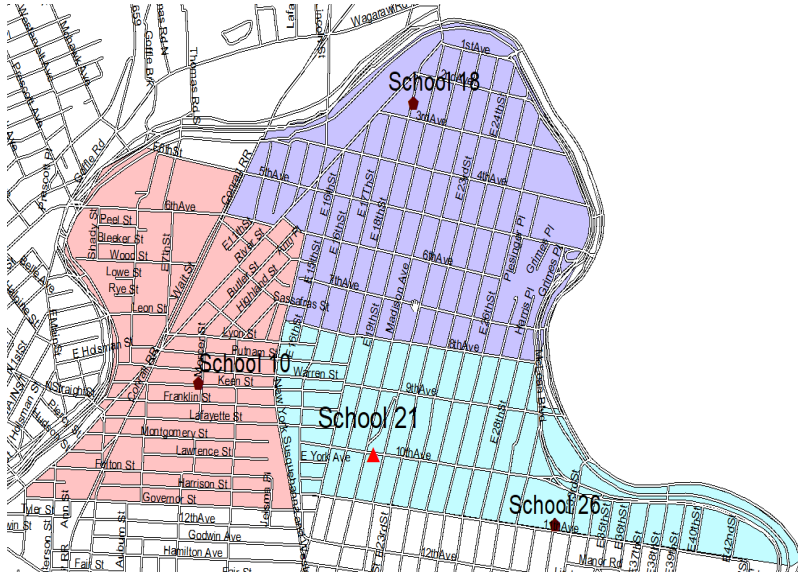
NRC: Grades 6-8

- General Education
- Spanish Bilingual and ESL
- Special Education

Phase 3

2026 - 2027

PS 10, PS 18, PS 21, PS 26



PS 10: Grades K - 5

- General Education
- ESL
- Special Education



PS 18: Grades K - 5

- General Education
- Spanish Bilingual and ESL
- Special Education



PS 21: Grades 6 - 8

- General Education
- Spanish Bilingual and ESL
- Special Education



PS 26: Grades Pre-K - 5

- ESL
- Special Education

Middle School Transition Plan

The transition plan will create opportunities for students, staff, and parents to engage with new school personnel and work together during this change.

Key activities include:

Student and Staff Orientations:

These sessions will help students and staff familiarize themselves with the new environment, meet teachers and peers, and explore the facilities.

Parent Orientation:

This meeting will inform parents about the school's vision, academic programs, and support services while allowing them to ask questions and share concerns.

PTO Meetings:

These sessions will focus on reorganizing the Parent-Teacher Organization to better support the community during the transition. These initiatives aim to foster collaboration and ensure a smooth adjustment for everyone involved.

Middle School Transition Plan

School 1/26, 10, 18, 21, and
EWK

The school principal will be providing additional information.

School	June Open House	Summer Open House	Staff Social	Transition PTO
School 18	6/23	8/25	6/24	5/19
EWK	6/24	8/25	6/25	5/7
School 1/26	6/23	8/31	8/31	N/A
School 10	6/22	8/25	6/23	6/18
School 21	6/22	8/25	7/20	6/19

Supporting Student's Social-Emotional Well-Being During School Transitions

- Classroom-based SEL lessons addressing change, resilience, and coping
- **Collaboration with families to support students at home**
- Individual and group counseling focused on adjustment, belonging, and identity
- **Structured transition supports (orientation groups, peer connections, advisory supports, listening circles)**
- Monitoring students with existing or emerging needs during the transition
- Targeted interventions for students requiring additional emotional or behavioral support
- **Coordination of services to ensure continuity of supports**
- Student voice and family partnership will remain central to our work
- Our goal: safe, supportive, and connected learning environments for every student

Choice School Repurposing.

- The transformation of the AHA, NSW , PS 1, and YMLA school facilities will enable us to make the most of our available resources. By repurposing these spaces, we aim to create vibrant environments that enhance our educational programs and support the diverse needs of our students.

2027 - 2028
Phase 4
Middle School Model

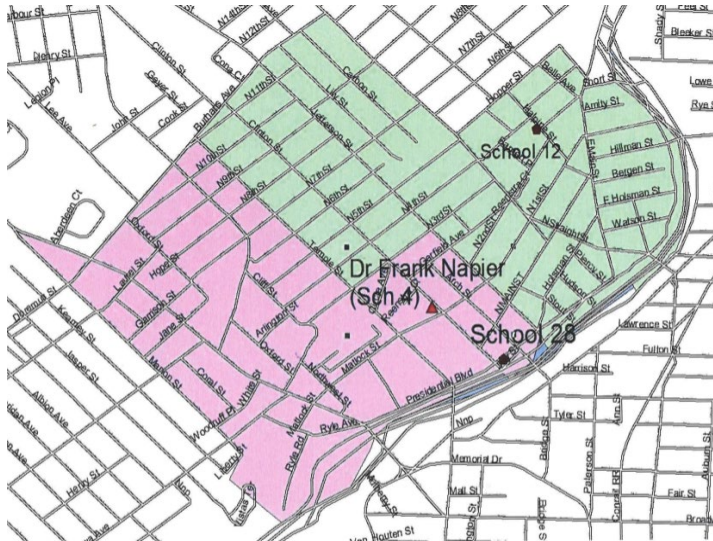
Phase 4 2027 – 2028

In Phase 4, we will establish four dedicated middle schools, each carefully positioned to ensure easy access for students across the region.

- Middle Schools
 - Dr. Martin Luther King, Jr, (MLK)
 - Maria Magda O'Keefe (PS 24)
 - Dr. Frank Napier Jr. School of Science and Technology, (PS#4)
 - PS #2-Anticipated public separate
- Every school offers exceptional opportunities for students to engage in a unique educational program designed to promote growth and enrich their overall development.

Phase 4 2027 - 2028

PS 4, 12, and 28



PS 4: Grades 6-8

- General Education
- G&T, Bilingual Education and ESL
- Special Education



PS 12: Grades K - 5

- General Education
- Bilingual Education and ESL
- Special Education



PS 28: Grades Pre-K - 5

- General Education
- G&T and ESL
- Special Education

Schools 4, 12, and 28

School 12 (K-5)

- General Education
- Bilingual Education
- Special Education

School 4: (Grades 6 - 8)

General Education

G&T

Bilingual Education

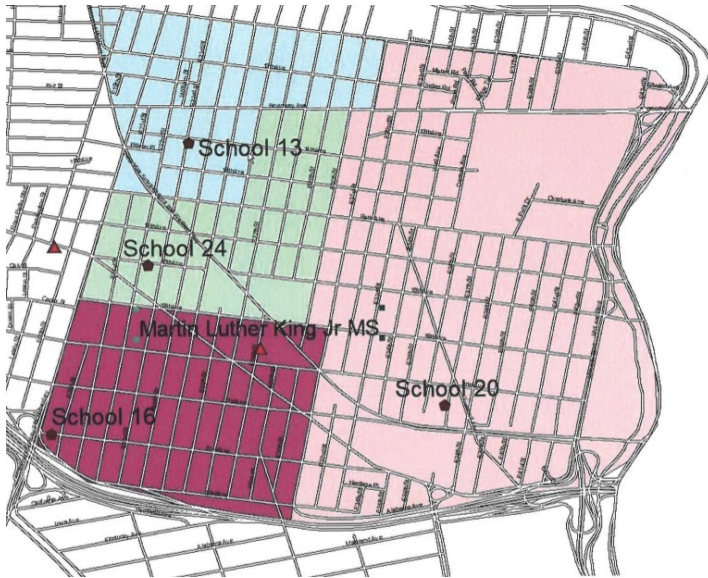
Special Education

**** Includes a portion of School 2's general education students***

School 28 (PreK-5)

- General Education
- G&T
- Special Education

Phase 4 2027 - 2028 PS 20, 25 and MLK



PS 20: Grades K -5

- General Education
- Special Education
- ESL



PS 25: Grades P3 - 5

- General Education
- Special Education
- ESL



MLK: Grades 6-8

- General Education
- Special Education
- ESL

Schools 20, 25, and MLK

School 20 (K-5)

- General Education
- Special Education

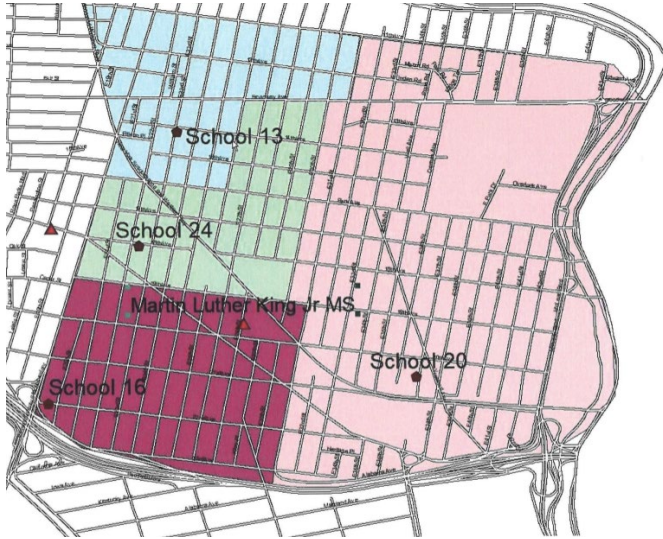
School MLK (Grades 6-8)

- General Education
- Special Education

School 25 (P3-5)

- General Education
- Special Education

Phase 4 2027 - 2028 13, 16, and 24



PS 13: Grades K - 5

- General Education
- Fine & Performing Arts
- G&T Hub
- ESL



PS 16: Grades (PreK-5)

- General Education
- SPED self-contained/resource
- Bilingual/Dual Language and ESL



PS 24: Grades 6 -8

- General Education
- Fine & Performing Arts
- G&T Hub
- SPED self-contained/resource
- Bilingual/Dual Language and ESL

Schools 13, 16, and 24

School 13 (K-5)

- General Education
- Fine & Performing Arts
- G&T (Anticipated)

School 16 (PreK-5)

- General Education
- Special Education
- Bilingual/Dual Language

School 24 (6-8)

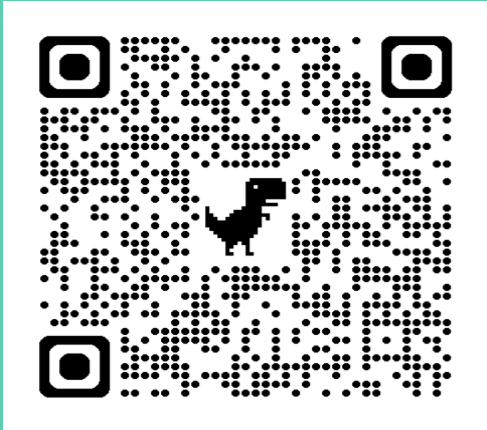
- General Education
- Fine & Performing Arts
- G&T (Anticipated)
- Special Education
- Bilingual/Dual Language

Middle School Transition Plan

Transition activities will be planned to support students as in previous phases.

Support & Feedback

For Parents



- Feedback
- Updates
- Important Announcements

For Staff

- One on one counseling with designated HR specialist.
- Reach out to Assistant Superintendent Rojas.

Phase 4

Next Steps

Community
Forums

Re-registration
of students
based on
update

Staffing
changes and
communication
to personnel

Transportation
route updates

School based
community
outreach

