

# Repurpose Boerne Middle School North as a CTE Center



**PROJECT UPDATE**

*October 15, 2025*



**James Fauver, AIA**  
Senior Project Manager



**Luis Ahumada**  
Director of K-12 San Antonio



**Sheleah Reed**  
Director, PreK-12 Engagement & Partnerships



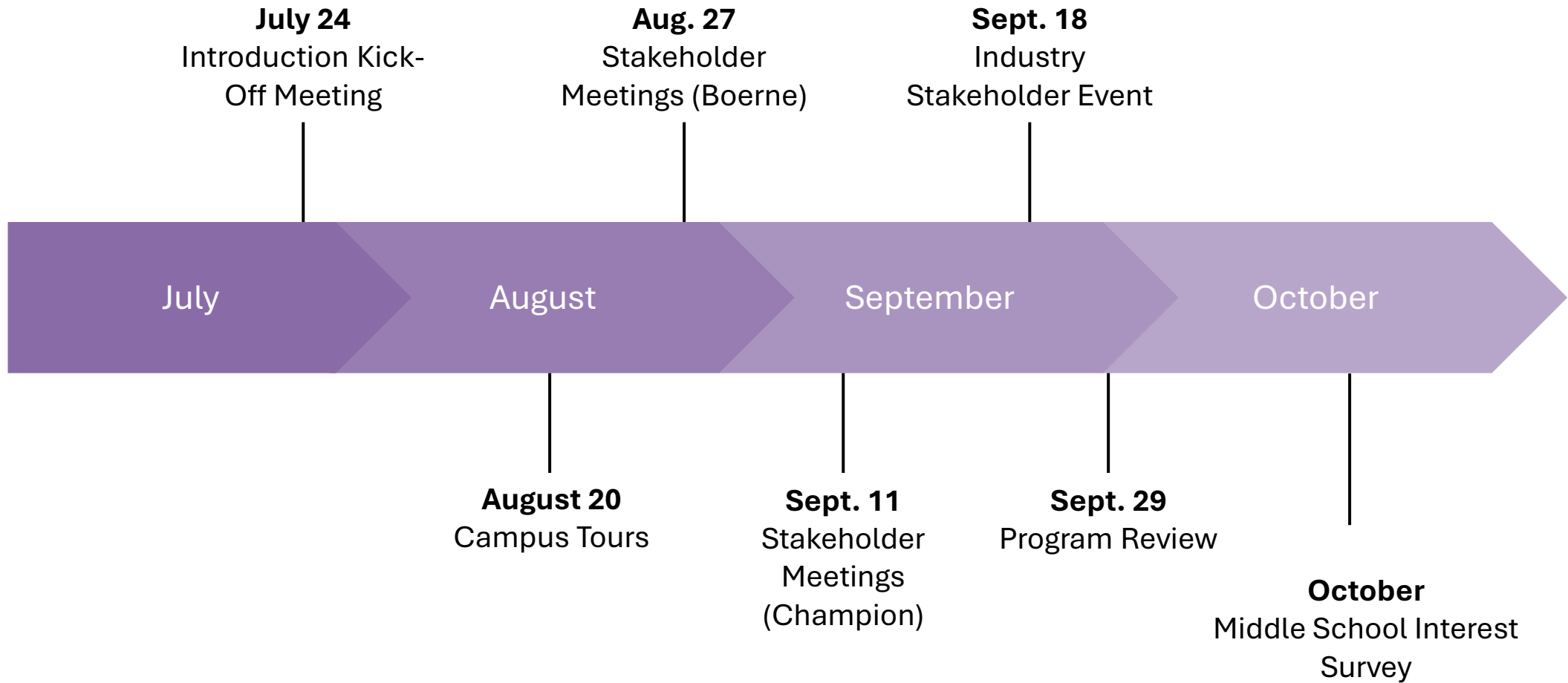
**Melissa Turnbaugh, AIA**  
CTE Subject Matter Expert,  
Firmwide PreK-12 Market Leader

**Daniel De La Garza**  
Design Director



## Our Charge

To partner with Boerne ISD in reimagining Boerne Middle School North through a collaborative planning process that aligns enrollment and expansion needs with a forward-thinking vision for Career and Technical Education (CTE). Our goal is to create a facility that reflects community values, prepares students for future careers, and strengthens district growth through inclusive engagement, data-informed programming, and strategic conceptual planning.



\* Monday afternoon weekly standing project meetings



# Campus Tours

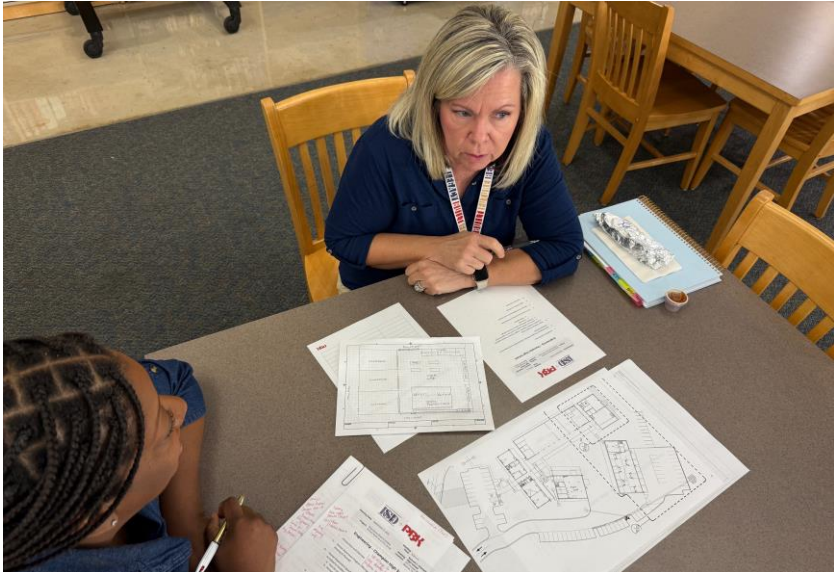


July

August

September

October



## Health Science – Boerne High School

Part of the Public Service Pathway, Health Sciences PTECH  
Students can receive Certified Clinical Medical Assistant Certification

### Attendees:

- Selina Schubart
- Dr. Vanessa Smith
- Lisa Reeh

### Program Overview

- Focus Area: Health Science
- Year 1: Planning phase
- Cohort Enrollment:
  - Cohort 1: 200 students
  - Cohort 2: 150 students
  - Cohort 3: Expected to grow
- All students receive CPR training

### Certificates:

- EKG Tech (newest one)
- CBR2 (currently)
- Phlebotomy (want to add)
- Level 1 EMT (future)

### Space & Capacity Challenges

- Building space was exceeded within one year of opening.
- At peak times, up to 25% of high school students were enrolled in classes.
- 216 students attend six classes, making group activities difficult.
- Business classes currently occupy space; unclear impact when additional classes are built out next year.
- Classroom spaces are not appropriate for current class sizes.
- No convening/planning space available for teachers.
- Classroom doors not wide enough. Hospital beds don't fit.
- Outdoor area used as flexible space:
  - Presents safety concerns
  - Becomes an unwanted student gathering area
  - Teachers are required to monitor both classroom and hallway

### Teacher & Staff Needs

- Interest in a teacher workroom and lounge area
- No permanent teacher desk area with convenient access





## CAN I ASK YOU A QUESTION?

What are the emerging trends in your industry?

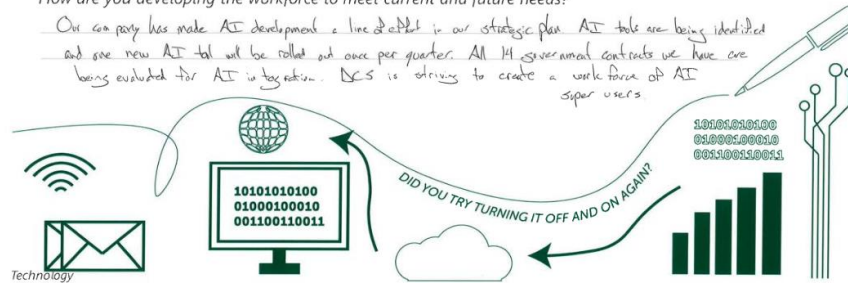
Artificial Intelligence and Machine Learning are being incorporated into almost every request for proposal for defense contracting. The government desires advanced analytics for most professional services contracts. Also experiencing 30% growth in cybersecurity field.

How do your facilities support the work of your organization?

We have a secure facility to ensure CMMC level II compliance

How are you developing the workforce to meet current and future needs?

Our company has made AI development a line of effort in our strategic plan. AI tools are being identified and one new AI tool will be rolled out once per quarter. All 14 government contracts we have are being evaluated for AI integration. DCS is striving to create a work force of AI super users.



## CAN I ASK YOU A QUESTION?

Calli McCormac  
Strategy

What are the emerging trends in your industry?

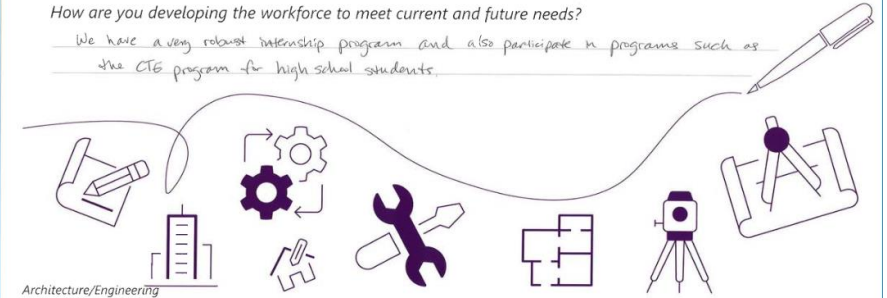
The emergence of AI is going to create a greater need for data centers and a way to power them.

How do your facilities support the work of your organization?

We have four offices in Texas that provide a space for collaboration, innovation, and culture building.

How are you developing the workforce to meet current and future needs?

We have a very robust internship program and also participate in programs such as the CTE program for high school students.



## CAN I ASK YOU A QUESTION?

What are the emerging trends in your industry?

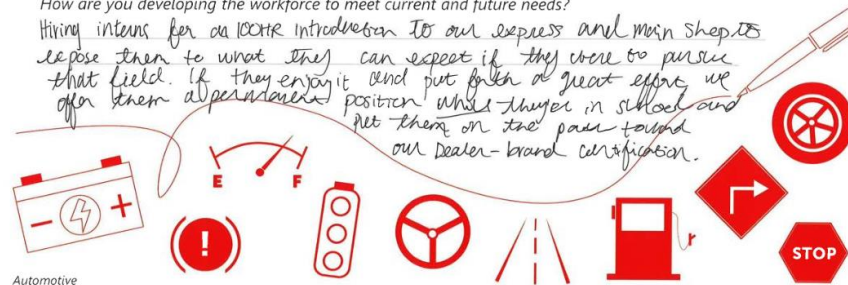
Mobile Services - Technicians can do tires, oil changes, brakes, etc. in someone's driveway so we're also looking for soft skills coupled w/ technical.

How do your facilities support the work of your organization?

Service is a HUGE stable source of revenue for our dealerships. It is how we retain customers and continue to have them come back and shop with us.

How are you developing the workforce to meet current and future needs?

Hiring interns for an ICEER introduction to our express and main shops to expose them to what they can expect if they were to pursue that field. If they enjoy it and put forth a great effort, we offer them an advanced position while they're in school and net them on the path toward our Dealer-brand certification.



## CAN I ASK YOU A QUESTION?

What are the emerging trends in your industry?

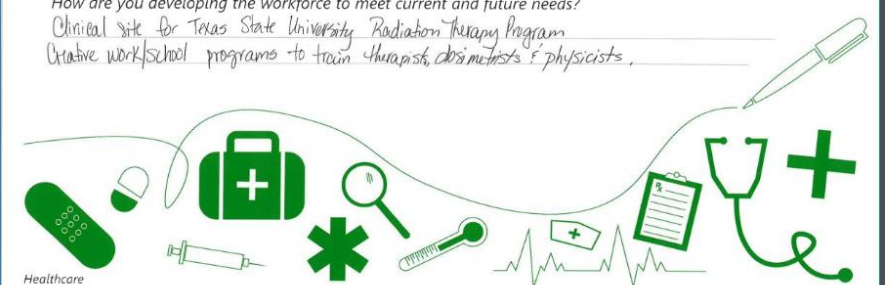
more complex treatment regimens, innovative applications, more use of AI

How do your facilities support the work of your organization?

Treating cancer patients  
Diagnostic imaging services

How are you developing the workforce to meet current and future needs?

Clinical site for Texas State University Radiation Therapy Program  
Creative work/school programs to train therapists, dosimetrists & physicists.



# Created a Building Program

## CTE Program Review Boerne ISD Program of Spaces

### MS - CTE CAMPUS

SPACE/FUNCTION	QUANTITY	NET UNIT	TOTAL NET	WORK SPACE REQUIREMENTS
----------------	----------	----------	-----------	-------------------------

Engineering	Qty	SF	Total	MS Campus
Dedicated Classroom   Engineering	3	1,100	3,300	Large butcher block tables, overhead power
High-Intensity Lab   Playfield	1	3,800	3,800	Playfield used for competitions
Maker Space   Printing, equipment	1	1,000	1,000	Adjacent to lab with CNC, 3D printers
Storage Room   Tools/Equip + Project + Materials	1	400	400	Secure Student Storage, Shelves for all materials
			<b>8,500</b>	<b>NSF</b>

Arts AV & Technology	Qty	SF	Total	
Dedicated Labs   Computer Labs	2	1,200	2,400	Dual Monitor Computer Lab - 28 students
Storage Room   Equipment	1	200	200	Secure Storage
High-Intensity Lab   Broadcast / Digital Media Studio	1	2,500	2,500	Green Screen + Anchor Desk
Studio   Control Room	1	450	450	View to Studio + Sound Rooms
Studio   Sound Studio	1	300	300	Direct Access to Broadcast Studio
Studio   Prop Storage	1	200	200	Direct Access to Broadcast Studio
Studio   Equipment Storage	1	150	150	Direct Access to Broadcast Studio
Audio Room   Soundproof Audio Room	2	100	200	Sound Proof Recording
			<b>6,400</b>	<b>NSF</b>

First Responders - EMT & Fire Science	Qty	SF	Total	
Dedicated Classroom   Emergency Medical Technician	1	800	800	Oversized Classroom
Dedicated Lab   Emergency Medical Technician	1	1,200	1,200	Simulation ambulance
Storage Room   Equipment	1	200	200	Secure Storage
Dedicated Classroom   Fire Science	1	800	800	Oversized Classroom, could be shared with EMT
Dedicated Lab   Fire Science	1	1,200	1,200	Demonstrations and drills
Outdoor Practice Area			TBD	Drills, simulations
Office   Instructor	1	200	200	Provide Clear View into Lab
Storage Room   Equipment	1	200	200	Secure Storage
Lockers   Open Locker Area	1	150	150	Double Tier Lockers, Could be combined with RR.
Toilet Room   Restroom & Shower	2	200	400	Restroom + Changing

Care & Share moves from Central Office

Aviation (Transportation)	Qty	SF	Total	
Dedicated Classroom   Aviation	1	800	800	Oversized Classroom
Dedicated Lab   Aviation	1	1,200	1,200	Building as well as simulation
Storage Room   Equipment	1	200	200	Secure Storage
Outdoor Practice Area			TBD	Drone course
			<b>2,200</b>	<b>NSF</b>

## CTE Program Review Boerne ISD Program of Spaces

### MS - CTE CAMPUS

SPACE/FUNCTION	QUANTITY	NET UNIT	TOTAL NET	WORK SPACE REQUIREMENTS
----------------	----------	----------	-----------	-------------------------

CULINARY ARTS	Qty	SF	Total	Proposed relocation to MS
Enterprise   Bistro Indoor Seating	1	1,800	1,800	Bistro - Full Serve: 15 - 18 SF / Occ
Enterprise   Table + Chair Storage	1	400	400	Optional
Enterprise   Bistro Prep / Serving	1	300	300	Approx. 13ft x 25ft
Enterprise   Toilet 1	1	200	200	Approx. 10ft x 20ft
Enterprise   Bistro Outdoor Seating			TBD	Optional Outdoor Space
Catering   Fine Dining Storage (Event Linens + Dishware)	1	300	300	Optional (Approx. 20ft x 17.5ft)
Dedicated Classroom   Culinary Arts Classroom	3	800	2,400	One classroom for growth
Dedicated Classroom   Introduction kitchen	1	1,200	1,200	
Commercial-Grade Kitchen (Food Prep Lab   Culinary Lab)	3	1,600	4,800	One classroom for growth
Warewash	1	250	250	Approx. 12.75ft x 19.5ft
Cooler / Freezer	2	250	500	Approx. 12.75ft x 19.5ft each
Dry Storage	1	350	350	1 Lg Rm <or> 2 Rms at 200 SF
Custodial Closet	1	100	100	Dedicated
Laundry	1	100	100	Commercial Washers + Dryers
Office   Kitchen Manager Office	1	200	200	Approx. 12.5ft x 16ft
Lockers / Changing   Staff Locker / Changing Area	1	200	200	
Lockers   Student Locker Area	1	240	240	Optional
Changing   Student Changing Stall	1	60	60	Optional
Receiving + Holding	1	300	300	
Storage   General	1	100	100	
			<b>13,800</b>	<b>NSF</b>

Air Force JROTC	Qty	SF	Total	
Dedicated Classroom   AF JROTC	2	800	1,600	Typical Classroom
High-Intensity Lab   Pellet Range + Drill / Assembly Area	1	1,800	1,800	Wall Treatment for Pellets, Outdoor access
Storage Room   Arms Storage	1	100	100	Secure Room, 2 Gun Safes
Storage Room   General Storage	1	170	170	Secure Storage
Outdoor Practice Area			TBD	50x50 outdoor training space/field
Office   Instructor	1	200	200	Provide Clear View into Lab
Meeting Room	1	300	300	
Storage Room   Uniform	1	300	300	Secure Storage, hanging rods for uniforms
Lockers   Open Locker Area	1	150	150	Double Tier Lockers, Could be combined with RR.
Toilet Room   Restroom & Shower	2	200	400	Restroom + Changing
			<b>5,020</b>	<b>NSF</b>

Future Program Labs	Qty	SF	Total	
Dedicated Classroom   Future	3	800	2,400	Typical Classroom
High-Intensity Lab   Future	2	1,800	3,600	Wall Treatment for Pellets, Outdoor access
Storage Room   General Storage	3	170	510	Secure Storage
			<b>6,510</b>	<b>NSF</b>

# Created a Building Program

## Recommendations

- Programs with large enrollment stay at home campuses
  - Health Science
  - Agriculture
- Intensive programs with growing interest move to MSN
  - Engineering
  - Culinary
  - AACTV
  - JROTC
- Existing smaller programs backfill space at home campuses
  - Entrepreneurship
  - Education - Future Teachers
- Establishment of new programs
  - First Responders – EMT & Fire Science
  - Aviation
  - Construction Science (Champion)

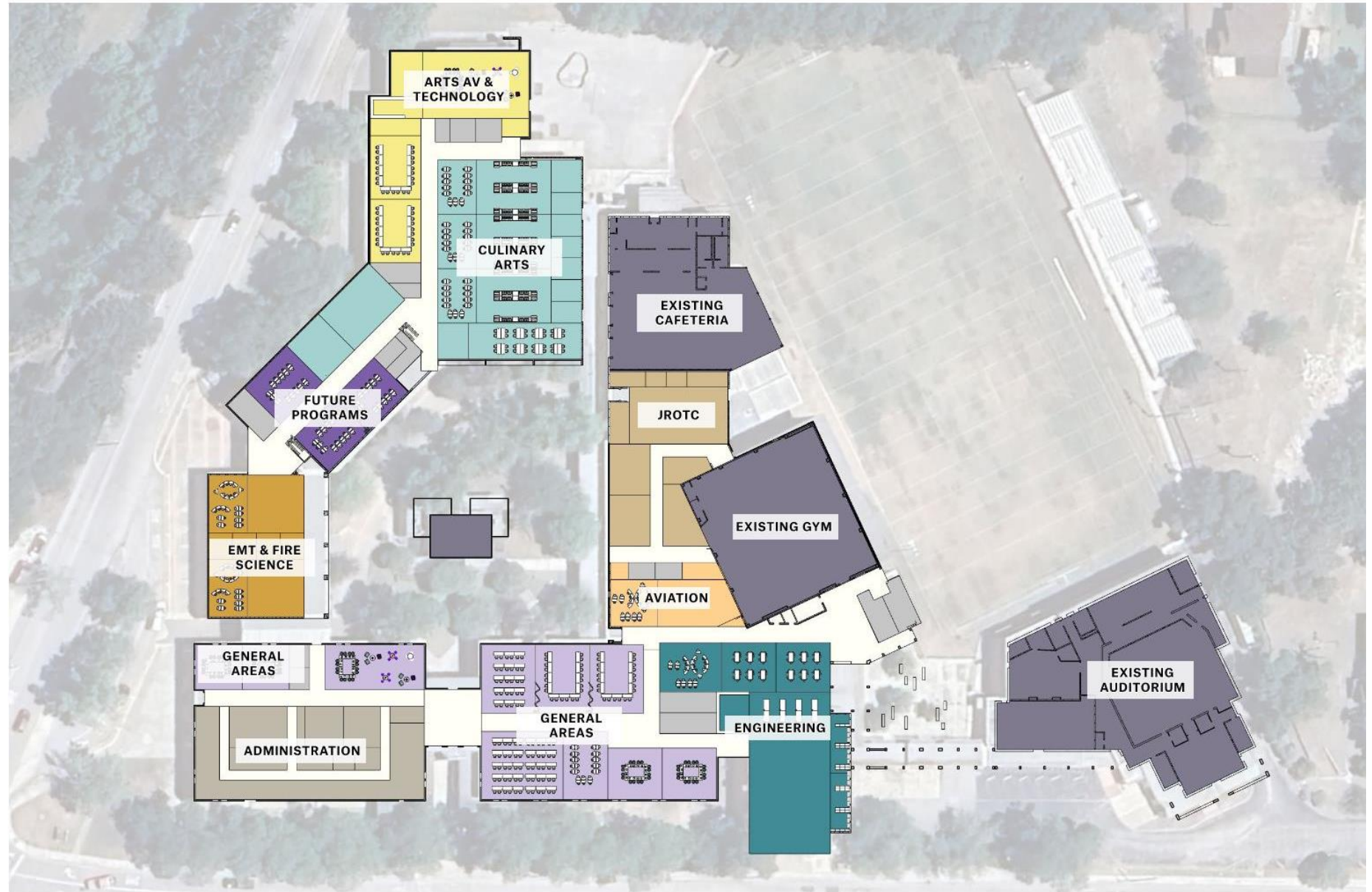




# BOERNE MIDDLE SCHOOL NORTH RENOVATION

**LEGEND**

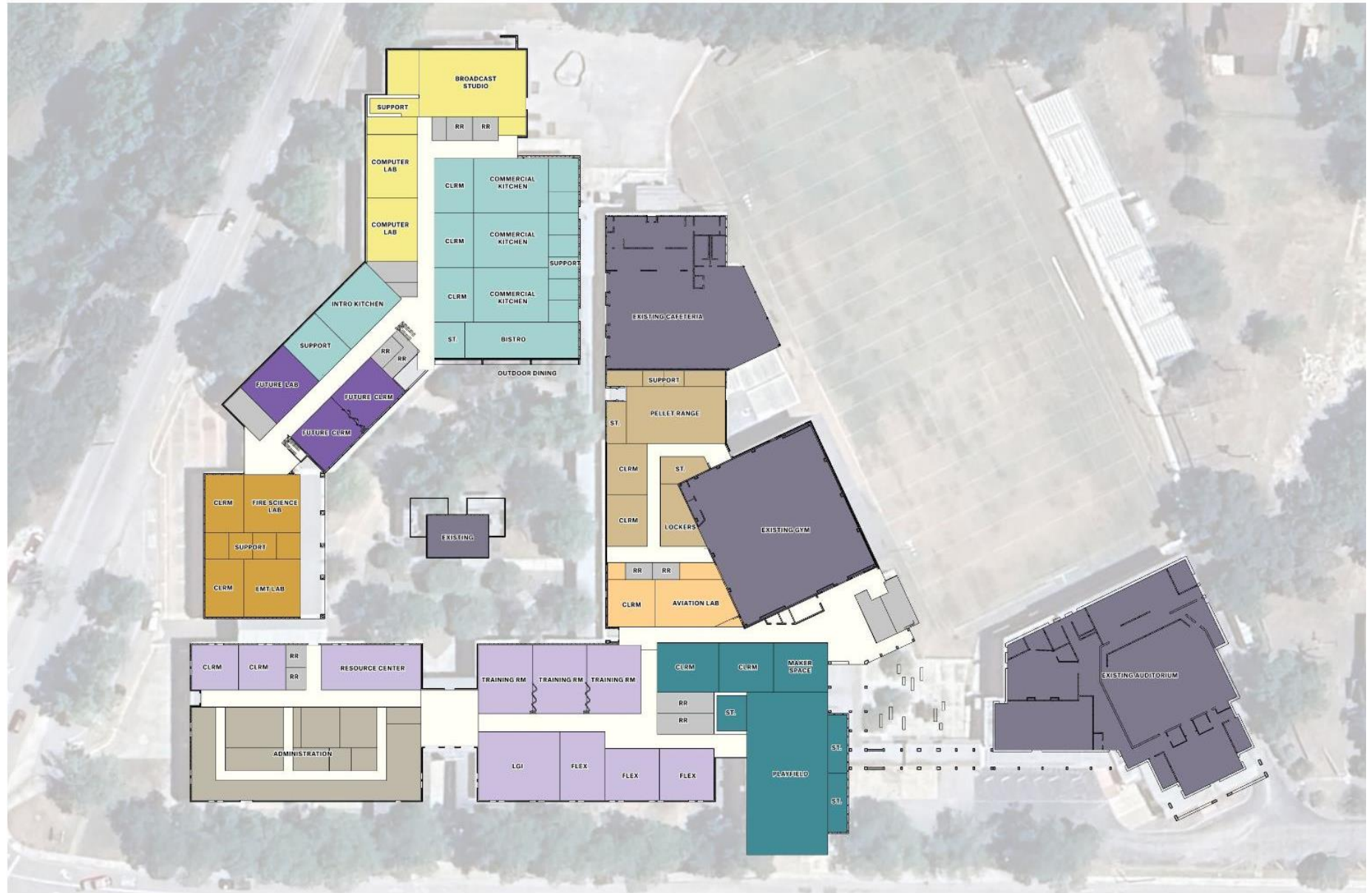
- ADMIN
- GENERAL AREAS
- EMT & FIRE SCIENCE
- AVIATION
- ENGINEERING
- AIR FORCE JROTC
- CULINARY ARTS
- ARTS AV & TECHNOLOGY
- FUTURE PROGRAMS
- EXISTING TO REMAIN



**BOERNE MIDDLE SCHOOL NORTH RENOVATION**

**LEGEND**

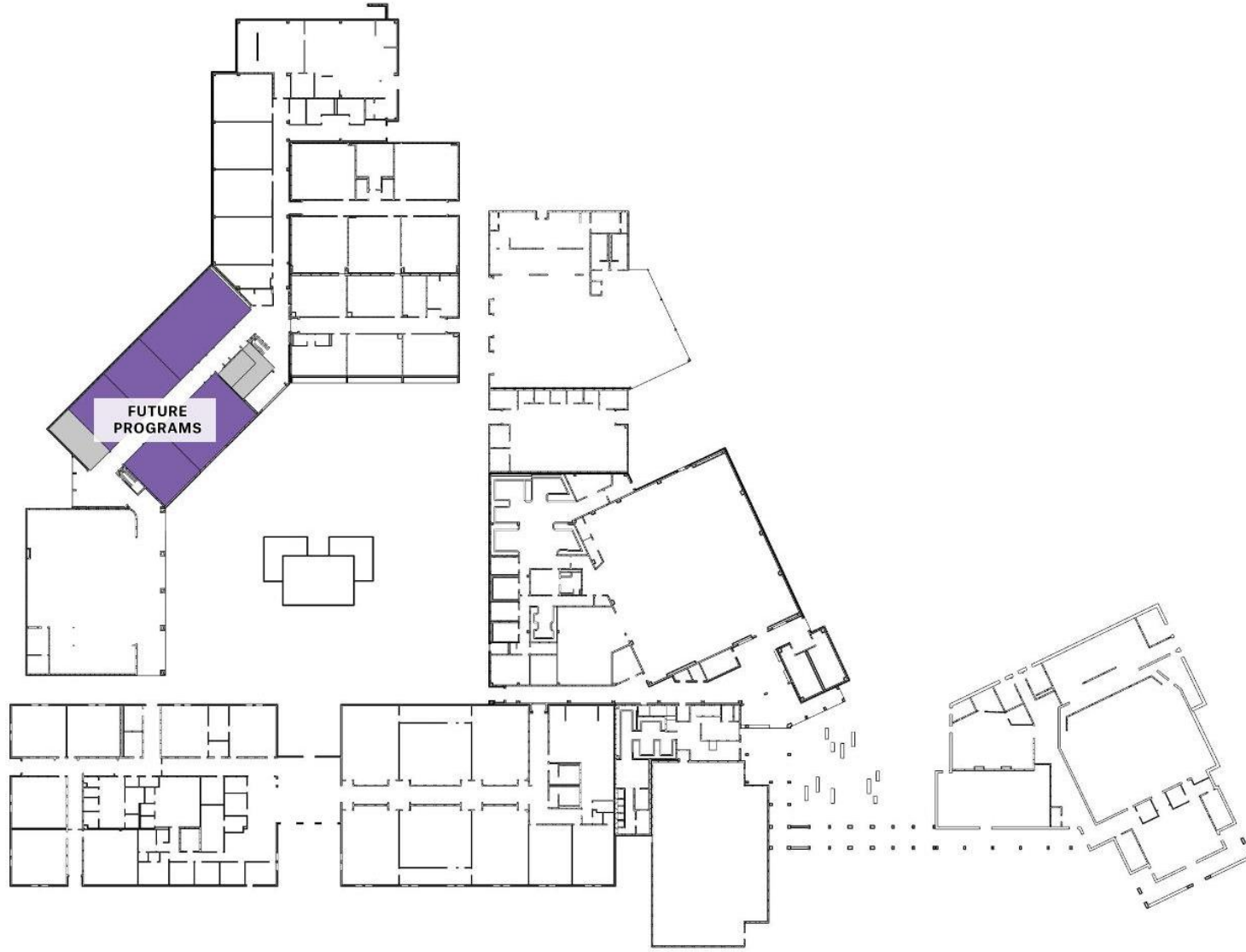
- ADMIN
- GENERAL AREAS
- EMT & FIRE SCIENCE
- AVIATION
- ENGINEERING
- AIR FORCE JROTC
- CULINARY ARTS
- ARTS AV & TECHNOLOGY
- FUTURE PROGRAMS
- EXISTING TO REMAIN



**BOERNE MIDDLE SCHOOL NORTH RENOVATION**

**LEGEND**

 FUTURE PROGRAMS

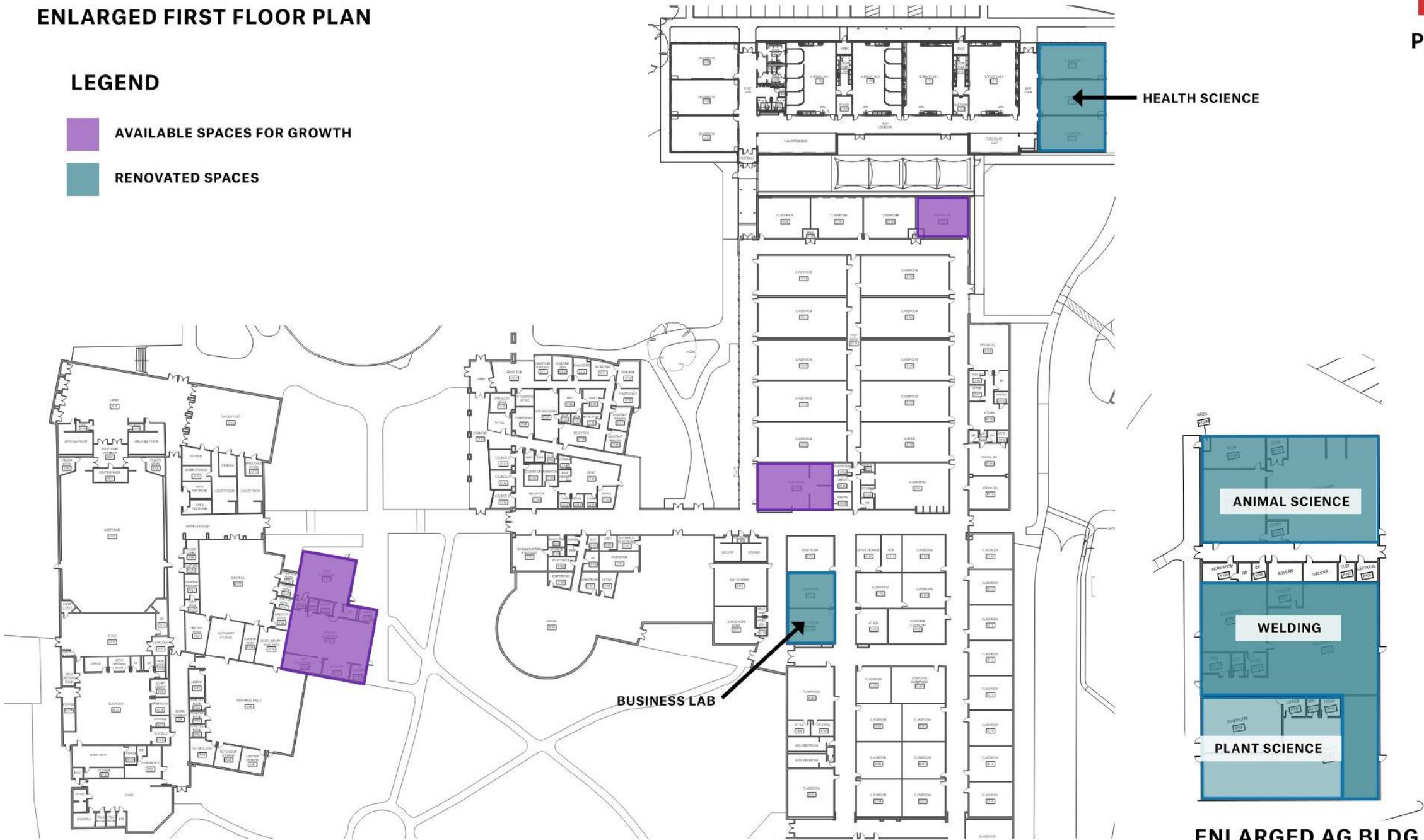


**BOERNE MIDDLE SCHOOL NORTH RENOVATION**

# ENLARGED FIRST FLOOR PLAN

## LEGEND

-  AVAILABLE SPACES FOR GROWTH
-  RENOVATED SPACES



# BOERNE HIGH SCHOOL CONCEPT SCOPE

ENLARGED AG BLDG

# ENLARGED FIRST FLOOR PLAN

## LEGEND

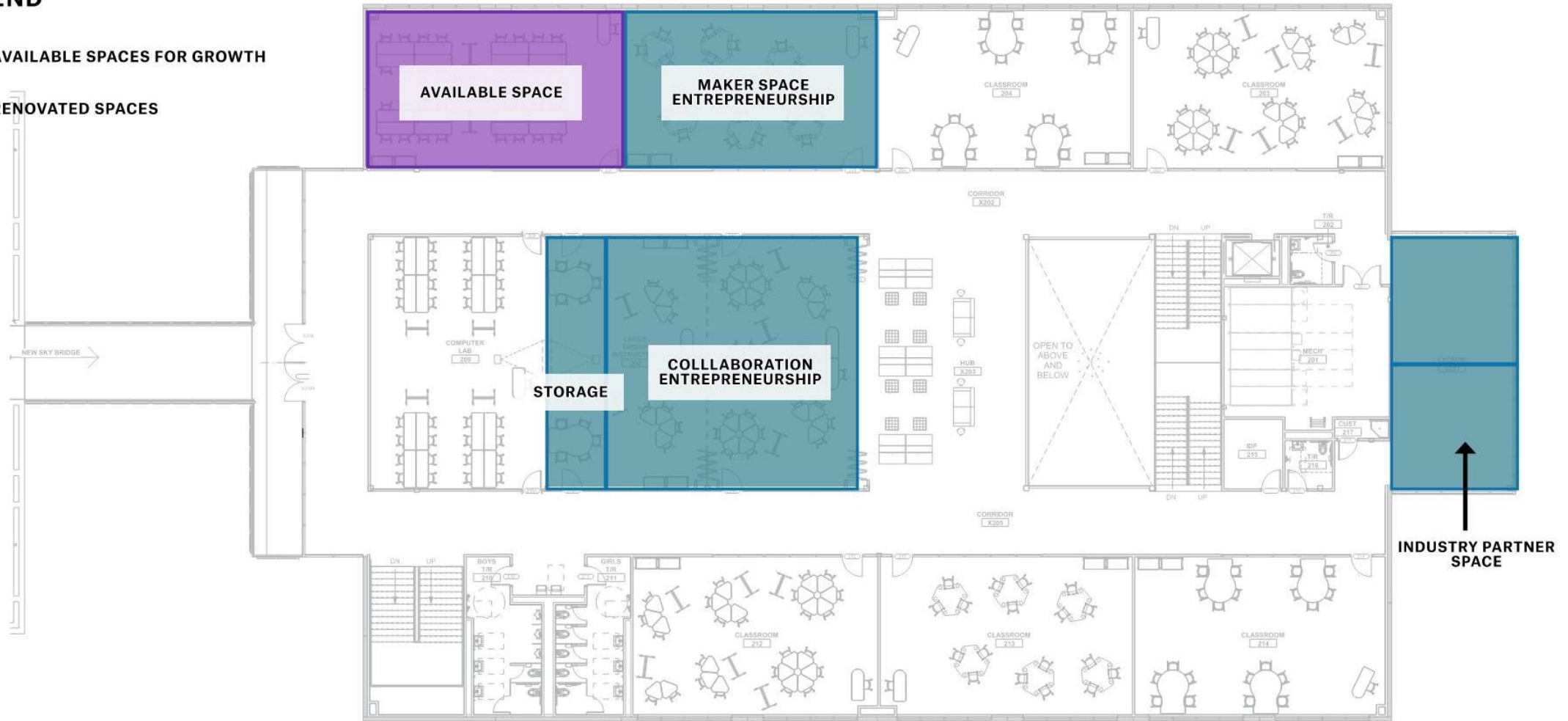
- AVAILABLE SPACES FOR GROWTH
- RENOVATED SPACES



# CHAMPION HIGH SCHOOL CONCEPT SCOPE

LEGEND

- AVAILABLE SPACES FOR GROWTH
- RENOVATED SPACES

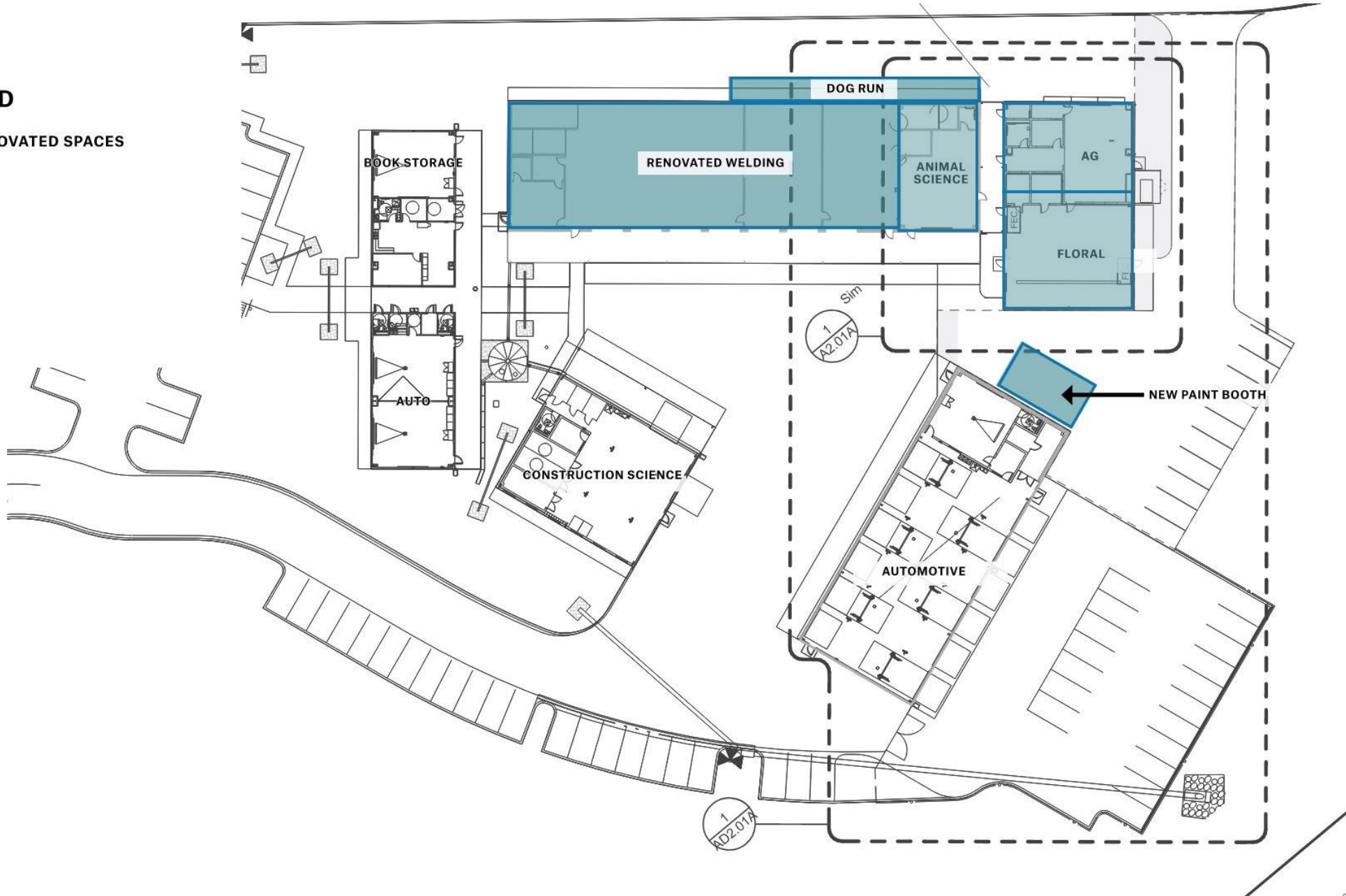


CHAMPION HIGH SCHOOL CONCEPT SCOPE

# ENLARGED FIRST FLOOR PLAN: THE RANCH

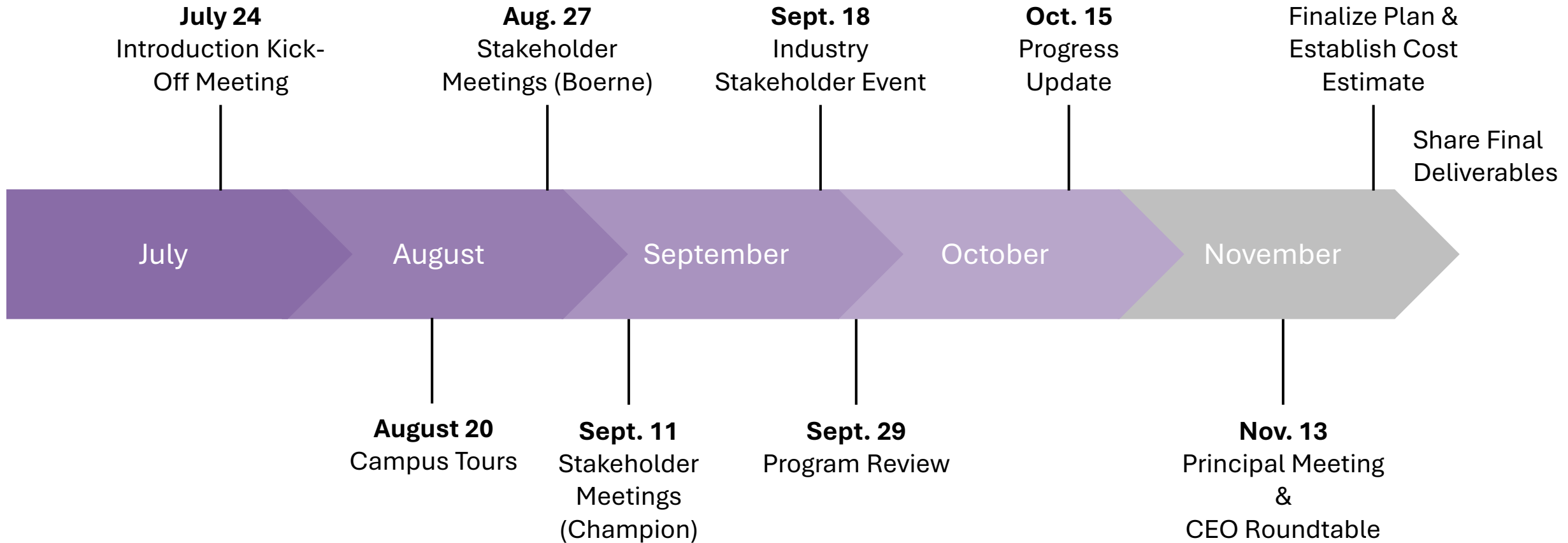
## LEGEND

 RENOVATED SPACES



# CHAMPION HIGH SCHOOL CONCEPT SCOPE

# Next Steps



\* Monday afternoon weekly standing project meetings





# THANKS!

