

SFPFG & BOC Meeting

April 28, 2025

ONE *community.*
purpose.
BOERNE

2.71 mi

- 
- Welcome
 - SFPFG Past Work – A Brief Recap
 - FPFG Summary
 - District Update
 - Discussion & Feedback

STRATEGIC FACILITIES PLANNING FOCUS GROUP

Composition + Charge

- Composed of invested community members focused on the future of Boerne ISD
- A source of insight and feedback about the quality of education and operations of the district
- Committed to open and meaningful dialogue to propel the sharing of ideas and solutions
- Fall 2023 through April 2024



- 
- Welcome
 - **SFPFG Past Work – A Brief Recap**
 - FPPFG Summary
 - District Update
 - Discussion & Feedback

Meeting 1

EXISTING FACILITIES

Nov. 6, 2023

Independent Work

PARITY

Dec. 2023

Meeting 3

POLICY

Feb. 7, 2024

Meeting 4

FUTURE FACILITIES

March 6, 2024

Meeting 5

RECAP

April 17, 2024

Meeting 1

EXISTING FACILITIES

Nov. 6, 2023

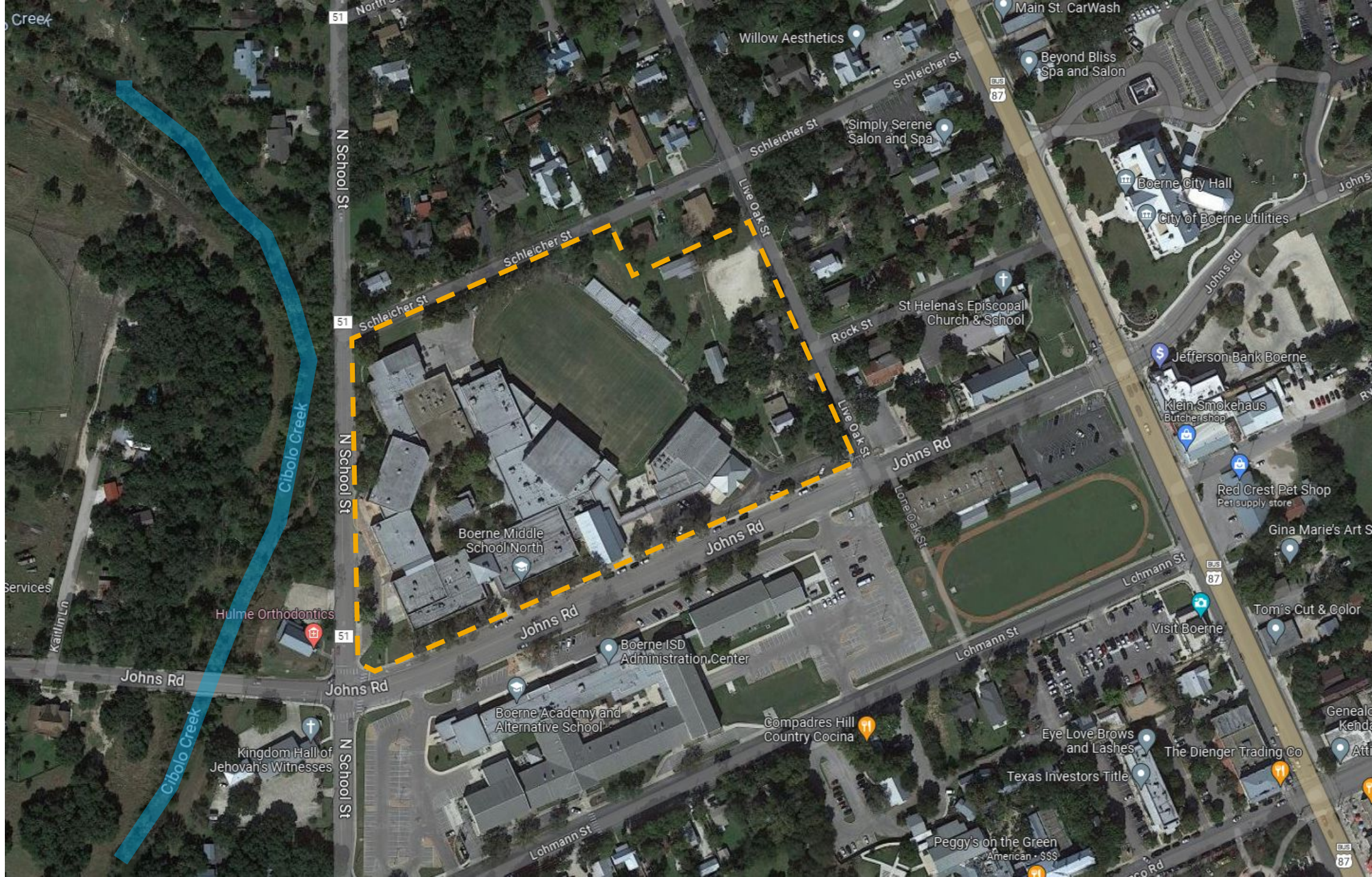


Boerne MS North



Boerne ISD Stadium

Boerne Middle School North



Boerne ISD Stadium



Meeting 3

POLICY



Feb. 7, 2024



Expert Panel



Table Discussions

Meeting 4

FUTURE FACILITIES



Demographics



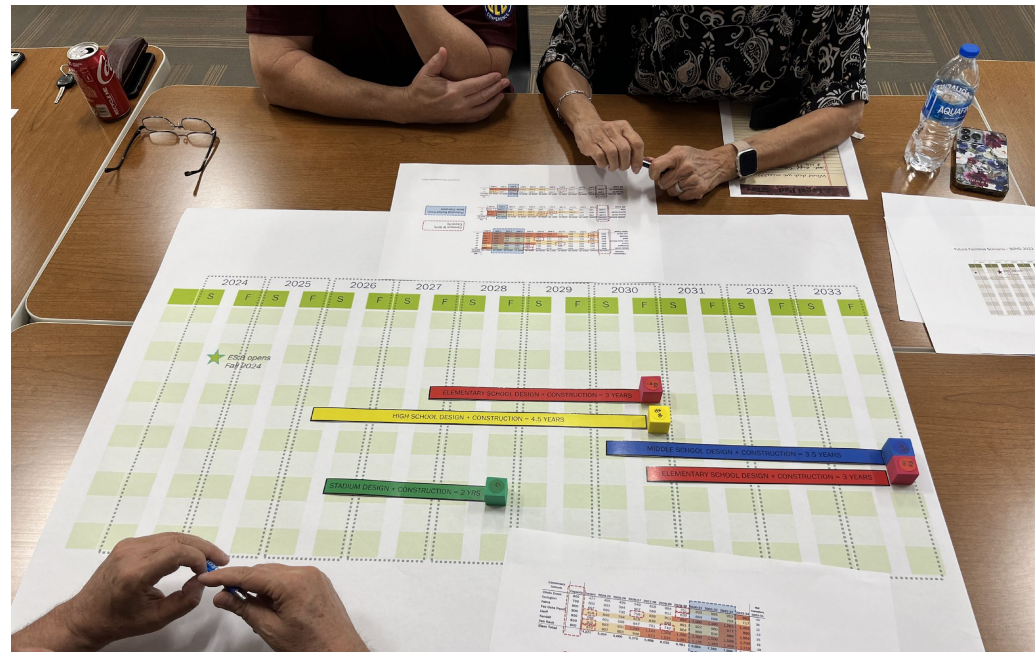
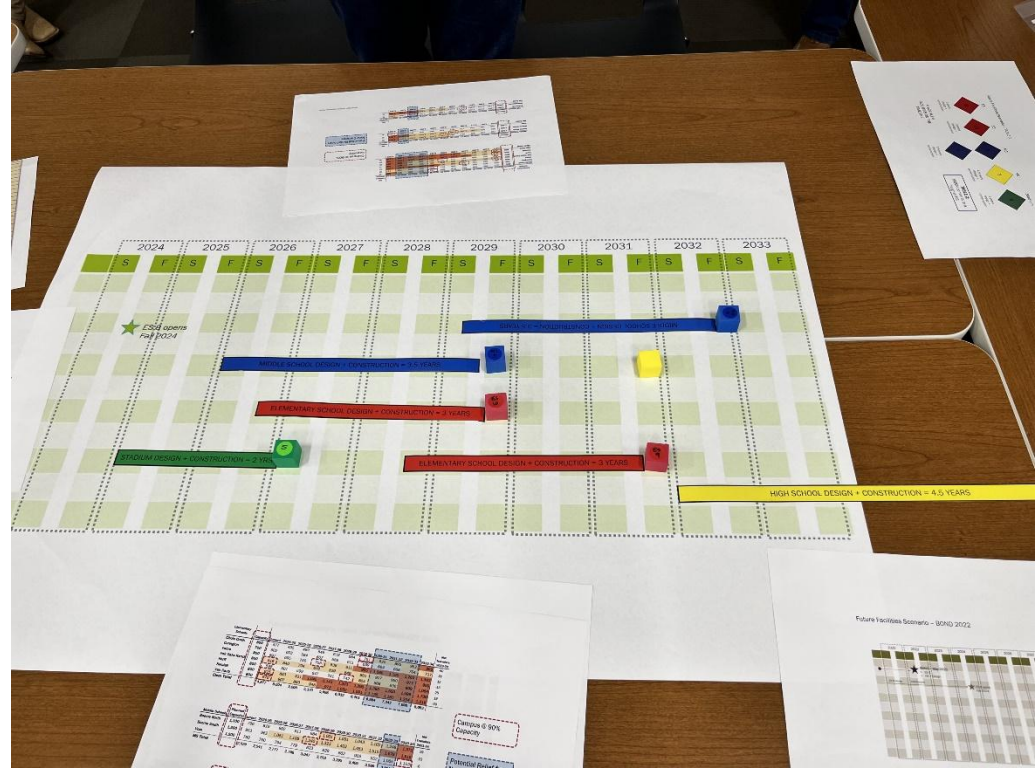
New Facilities



Land Acquisition

March 6, 2024

Future Facilities Planning Activity



SFPFG Recommendations (April 2024):

- 1) **Given the site constraints of BMSN, consider building a new BMSN and convene a team to explore how to leverage the current BMSN facility to meet long-term educational needs of BISD**
- 2) **Establish a preferred student capacity for middle schools at 1,200 students**
- 3) **Explore the expansion of current district land portfolio to provide options for the growing needs**
- 4) **Convene a long-range planning committee to consider district needs and timing of projects (i.e., stadium).**
- 5) **Maximize existing facilities strategically to postpone the need for high school #3.**

- 
- Welcome
 - SFPFG Past Work – A Brief Recap
 - **FPPFG Summary**
 - District Update
 - Discussion & Feedback

A group of baseball players in orange and white uniforms are celebrating on the field. One player in the center has the number 13 on his back. A coach in a black jacket and cap is also visible, interacting with the players. The background shows a blurred crowd of spectators.

Future Programming Focus Group

Oct 2024 – April 2025

ONE *community.
purpose.*
BOERNE

pfluger

The Future Programming Focus Group (FPFG) is:

- Composed of invested BISD staff who are focused on the future of Boerne ISD
- A source of insight and feedback about the future of educational programming and how facilities enhance these current and potential future needs
- Committed to open and meaningful dialogue to propel the sharing of ideas and solutions

We applaud your dedication to Boerne ISD.

ONE community.
purpose.
BOERNE

pfluger

***Future Ready
Workforce***



EC - 12 CONTINUUM



EC-2nd
Phenomenon/Inquiry
Based Learning

3rd - 5th
Exploratory Learning

6th - 8th
Connections to Career

9th - 12th
Empowered with
Transferable Skills

FPPG SEQUENCE:



SFPFG RECAP

OCT. 8, 2024



**A REVIEW OF
BOERNE ISD**

NOV. 4, 2024



TOURS

DEC. 2024 –
MAR. 2025



**SITE VISIT
REPORT OUT**

MAR. 20, 2025



**SYNTHESIS &
CONCURRENCE**

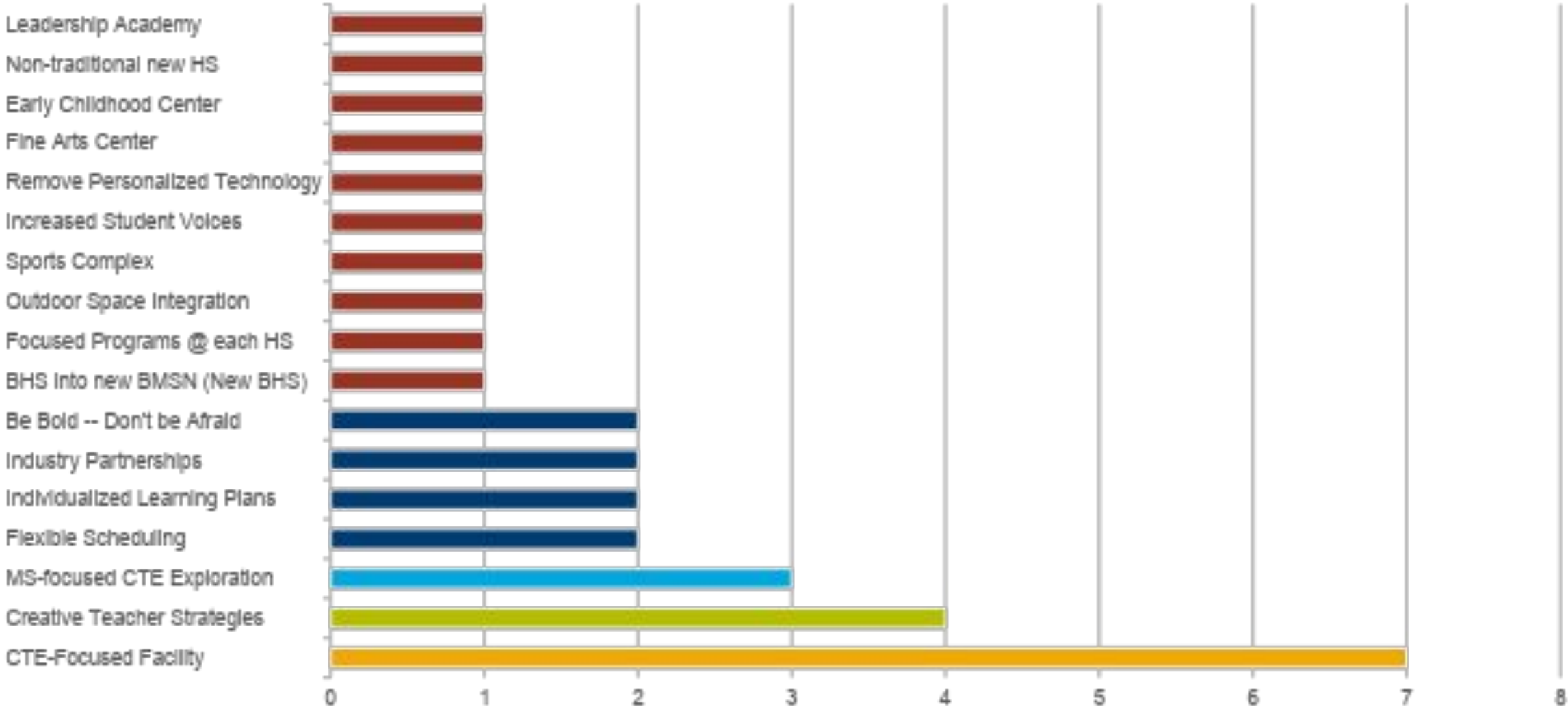
APR. 2, 2025



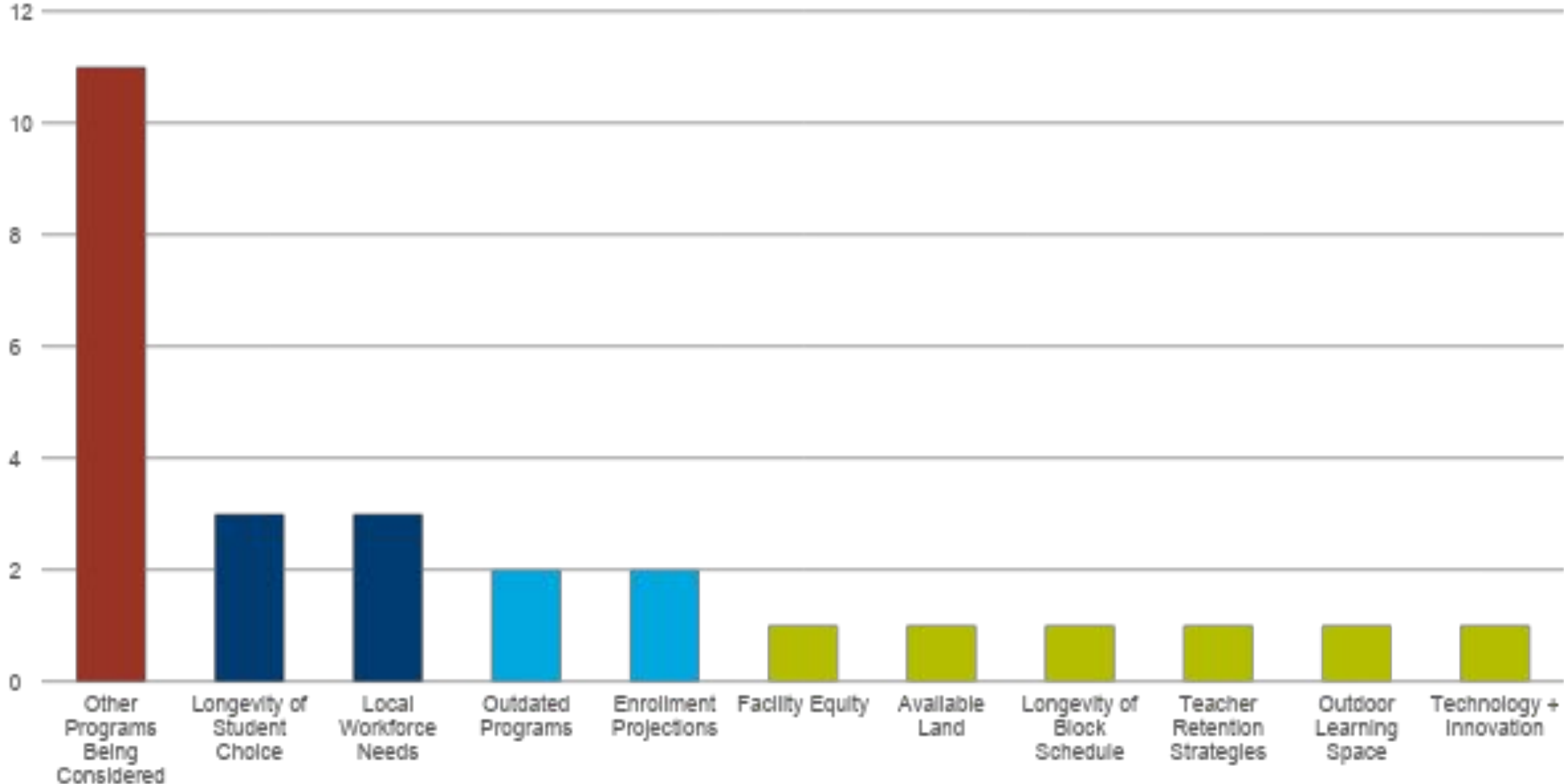
REPORT OUT

MAY 12, 2025

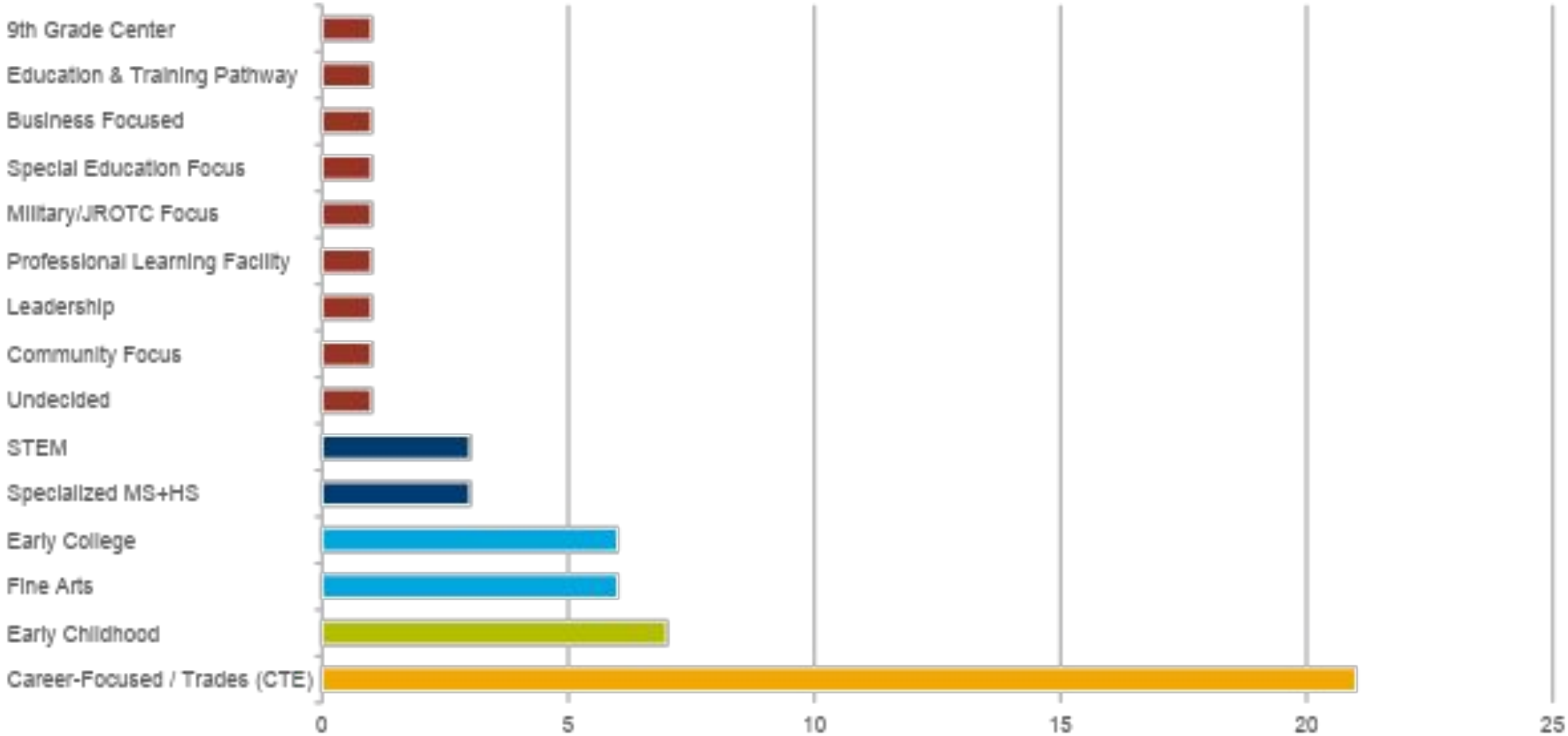
ONE BOLD IDEA FOR THIS DISTRICT...



REGARDING EDUCATION IN BOERNE, WHAT DO YOU WANT TO KNOW ABOUT?



WHAT SPECIALIZED PROGRAM WOULD BENEFIT BOERNE?



NISD Health Careers +
 CCA
 NEISD STEM
 Science Mill
 Georgetown FRLC
 Bellville Learning Ctr.
 Katy STEAM Ctr.
 Katy Career & Tech. Ctr.
 Tomball IC
 Stuart Career Tech. HS
 Mansfield STEM
 Allen STEAM
 Forney OC

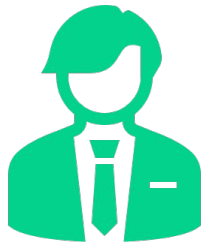
17 TOURS!

COSA
 PreK4SA
 Forney OC

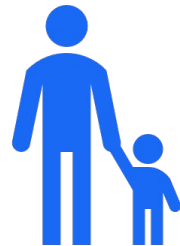
Alief ECHS
 Tomball IC
 Forney OC

Georgetown
 FRLC

Georgetown Hammerlun Ctr.
 Bellville Learning Ctr.
 Tomball IC
 HCC Collaboratorium
 Forney OC



Career &
 Technical
 Education



Early
 Childhood
 Standalone
 PK 3-4



Early
 College
 College or
 university &
 P-TECH



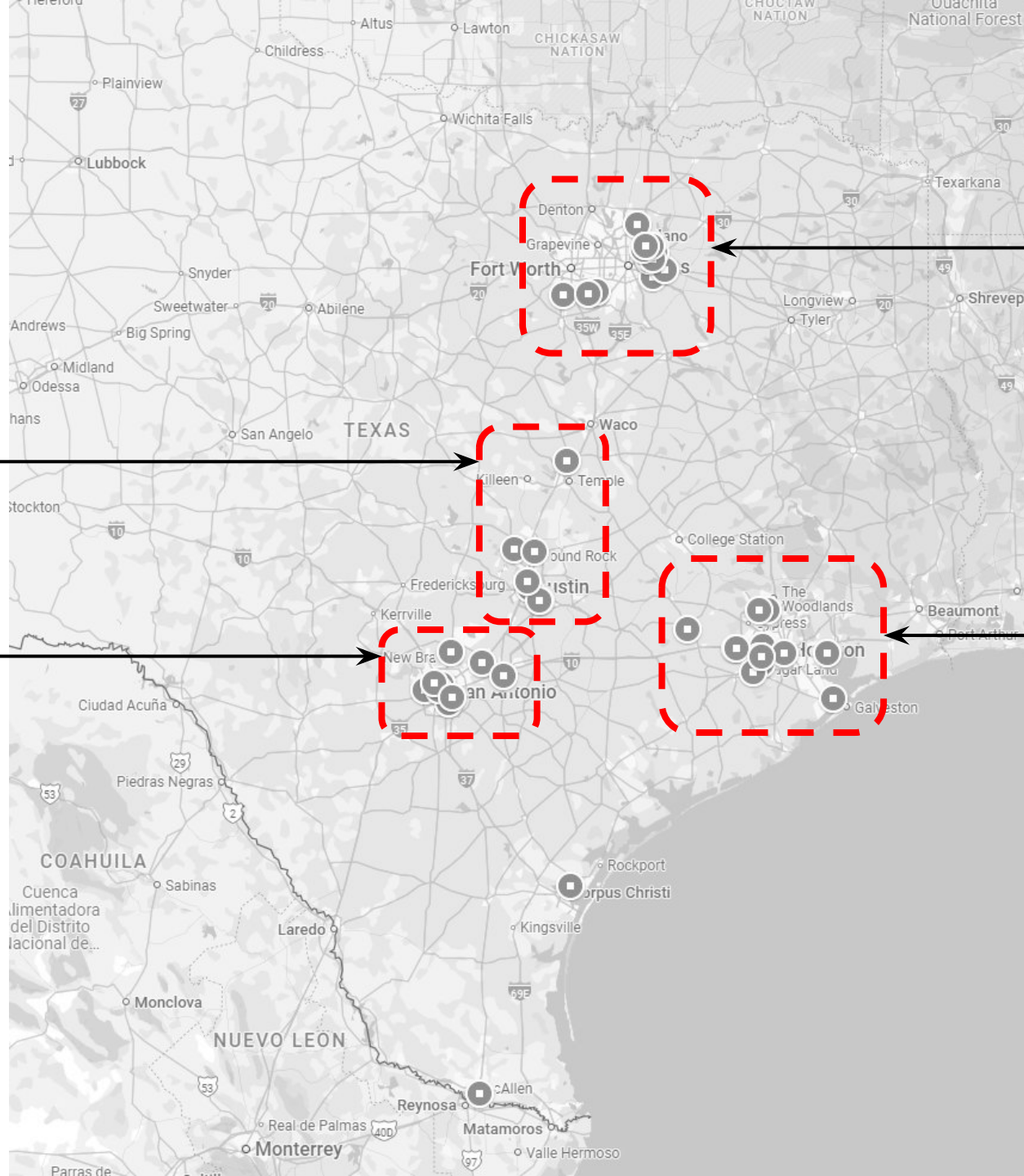
Enhanced
 Academic
 Includes
 Classical
 Studies & IB



Fine
 Arts



Community
 / Admin.

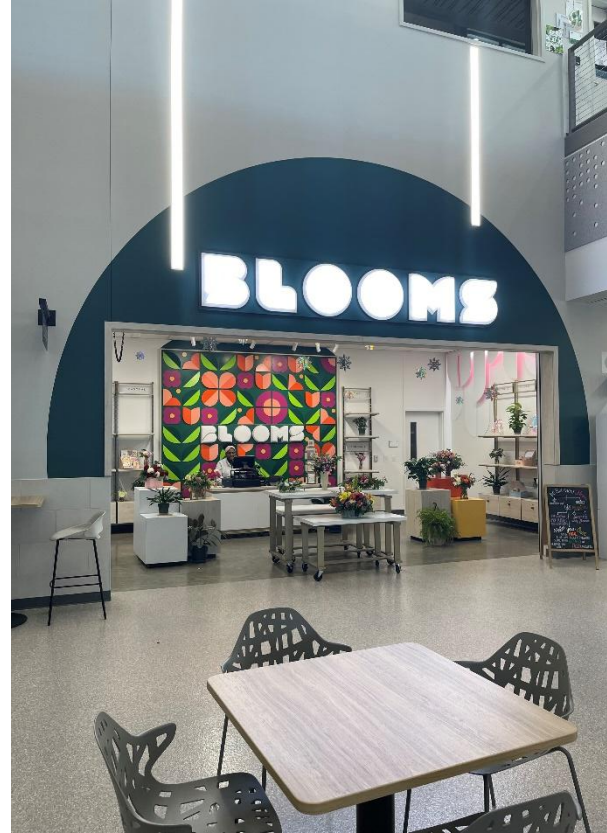


DFW-Area Tours

Austin-Area
Tours

SA-Area Tours

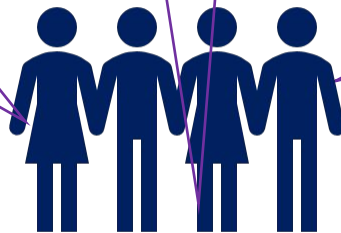
Houston-Area Tours



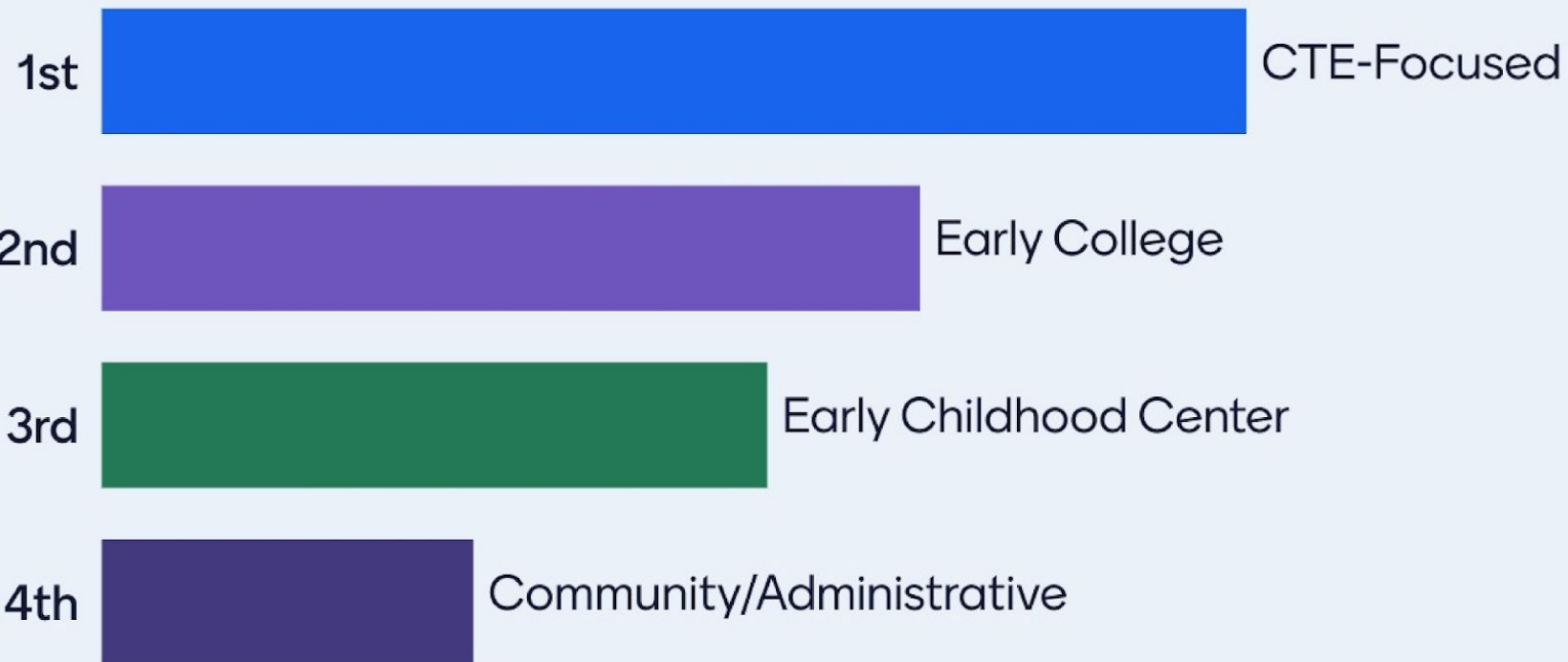
“Sometimes if we look outside the box, amazing opportunities can happen!”

“...it takes more than an innovative building to create a useful learning space for students...professional development and student voice are equally essential to creating effective learning...”

“Overall, this trip and these visits have changed my mindset from building additional, comprehensive schools to addressing our growth, student needs and preparedness, and our community’s needs...”



Rank these program types in your preferred order of potential implementation for Boerne ISD (1st = most desirable; 4th = least desirable)

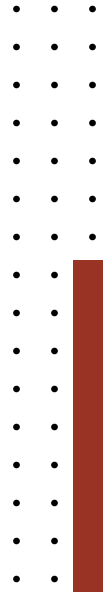
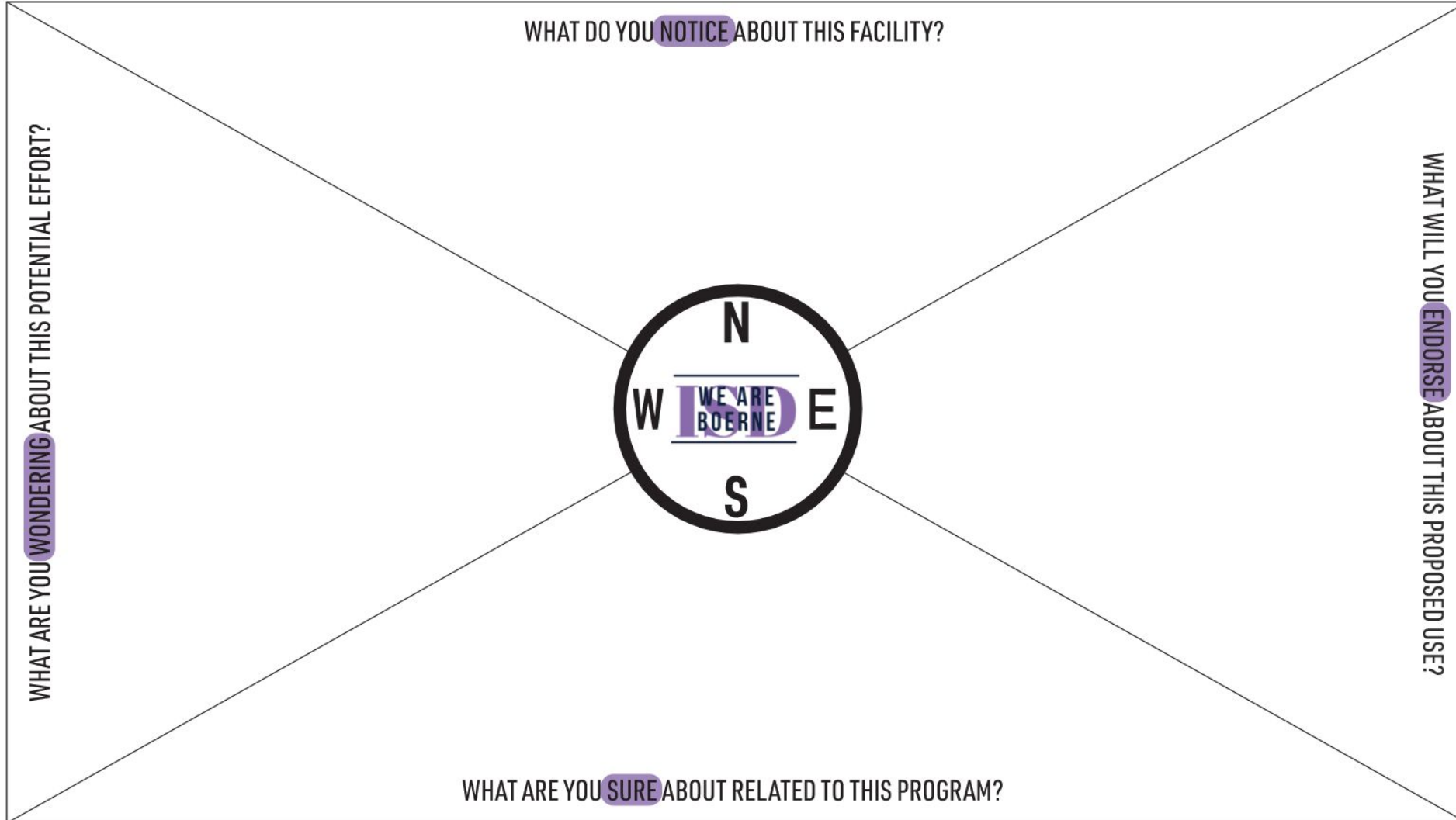


Do you believe a single program or combination of programs should be implemented?



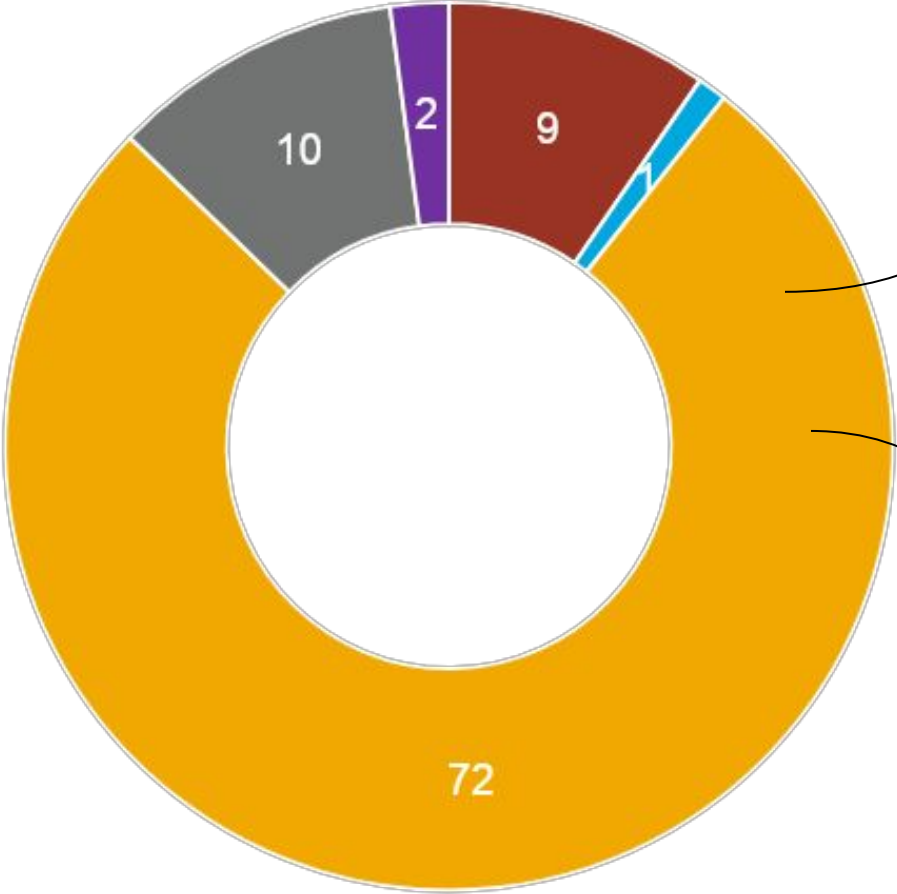
COMPASS POINTS

BMSN WALKING TOUR & GROUP DISCUSSION



What do you **NOTICE** about this facility?

- Programming
- Cross-Campus Use
- Physical Space Usage
- Timeline
- Community Impact
- Cost
- Parking
- Historic Significance

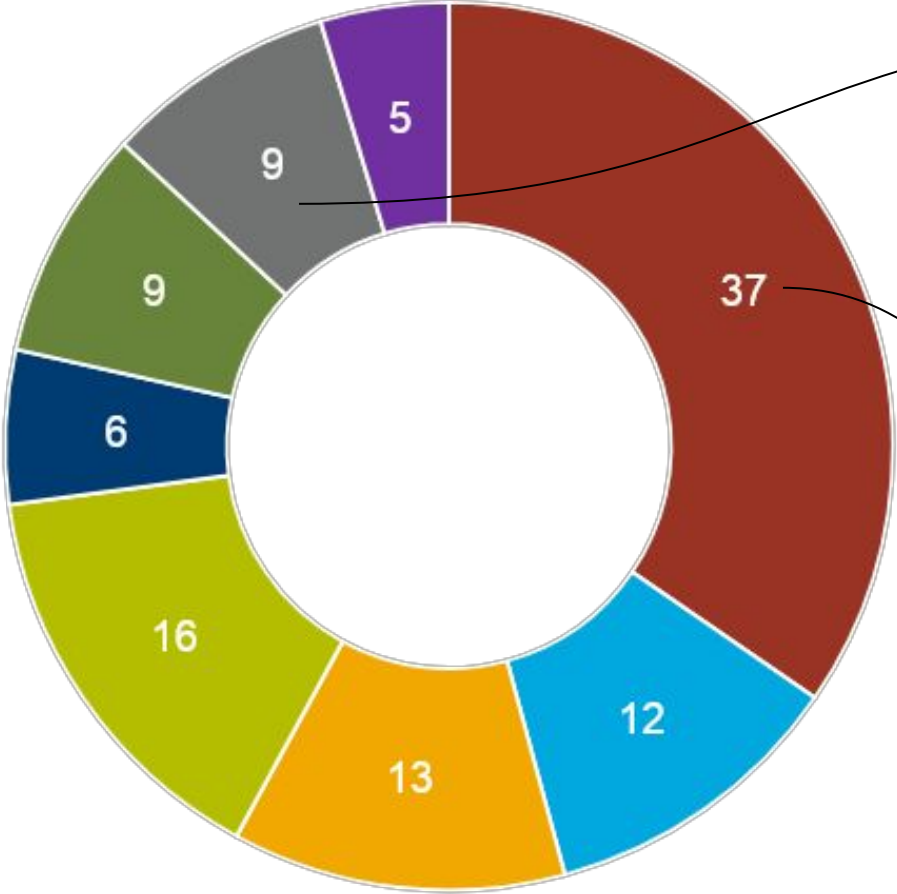


Well-kept and seemingly adaptable spaces (depending on the need)

Some small spaces, not collaborative

What are you **WONDERING** about this potential effort?

- Programming
- Cross-Campus Use
- Physical Space Usage
- Timeline
- Community Impact
- Cost
- Parking
- Historic Significance

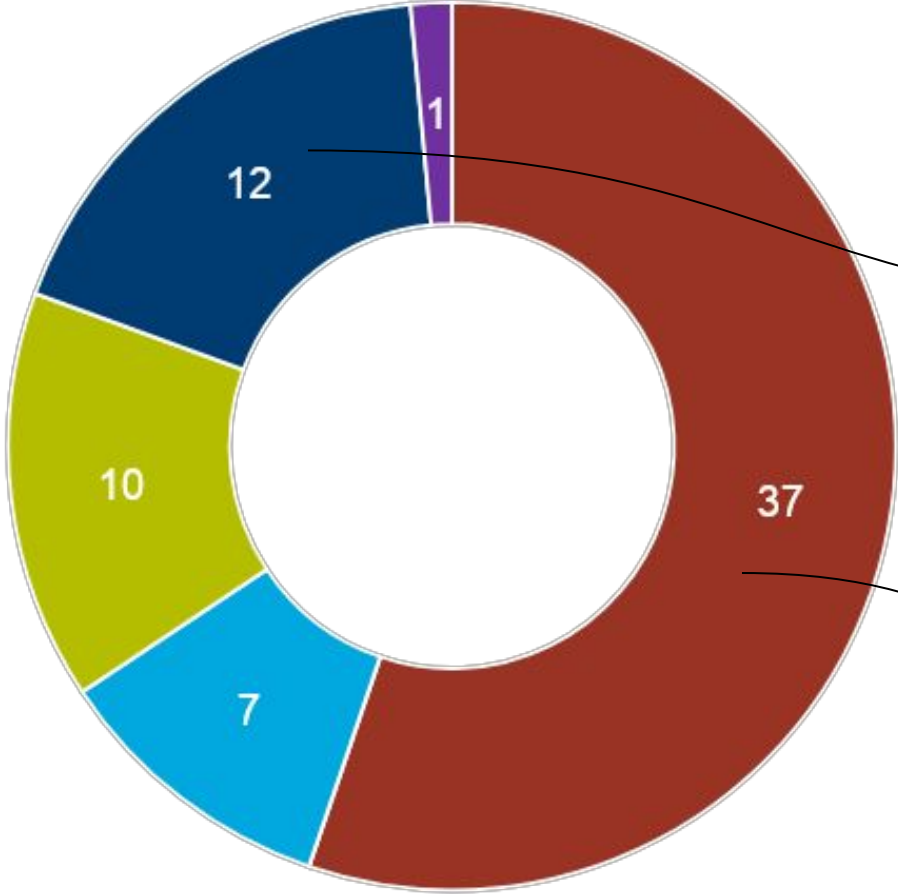


How will parking be addressed?

What programs would be here?
New or relocated programs?
How many programs can move here?

What are you **SURE** about related to this program?

- Programming
- Cross-Campus Use
- Physical Space Usage
- Timeline
- Community Impact
- Cost
- Parking
- Historic Significance

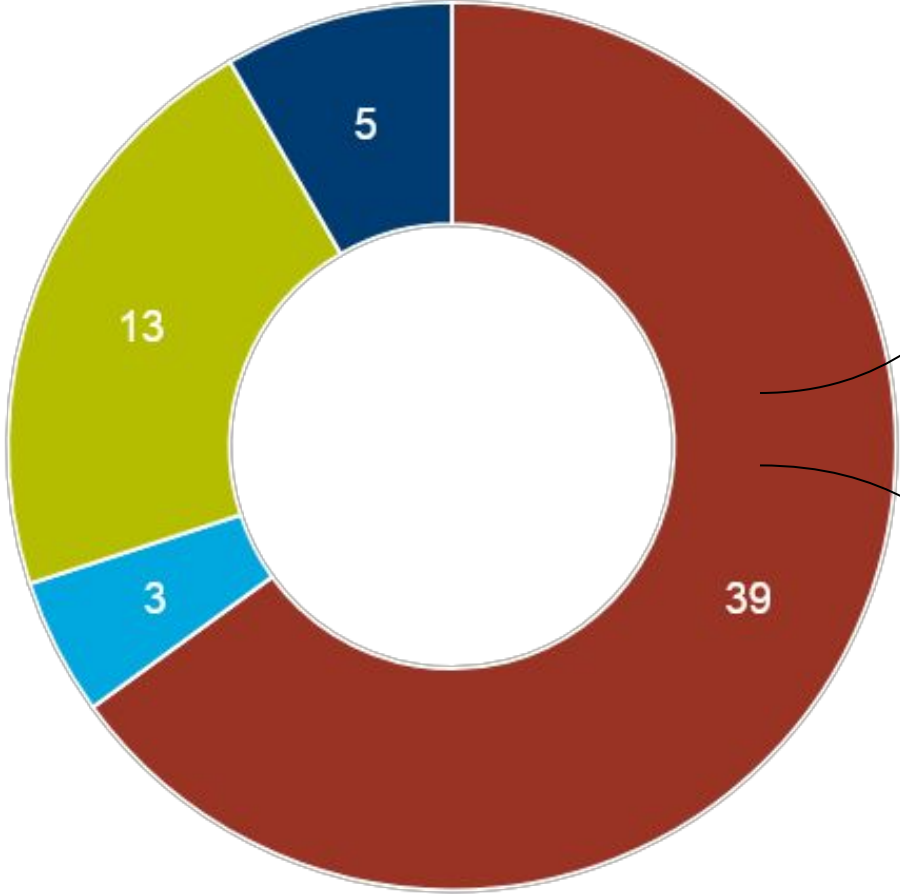


Community would fully support this (needs to be well-messaged)

Growth of CTE programs is a good choice

What will you **ENDORSE** about this proposed use?

- Programming
- Cross-Campus Use
- Physical Space Usage
- Timeline
- Community Impact
- Cost
- Parking
- Historic Significance



Innovative ideas and an increase in options for students

Repurposing for a CTE-specific use

NEXT STEPS for BMSN:

Develop the Program

- Study student interest
- Study workforce data and projections
- Determine what Business, Industry, or other External Partnerships are needed
- Determine courses, levels to be offered at a CTE site vs. home campus
- Led by Teaching & Learning Dept.

Facility Assessment

- Assess Overall Building + Site Conditions (systems, structure, etc.)
- Assess Functional Condition of the Building + Site (capacity, space adjacencies, level of renovation, etc.)
- Assessments done through the lens of the Program Requirements

Cost Implications

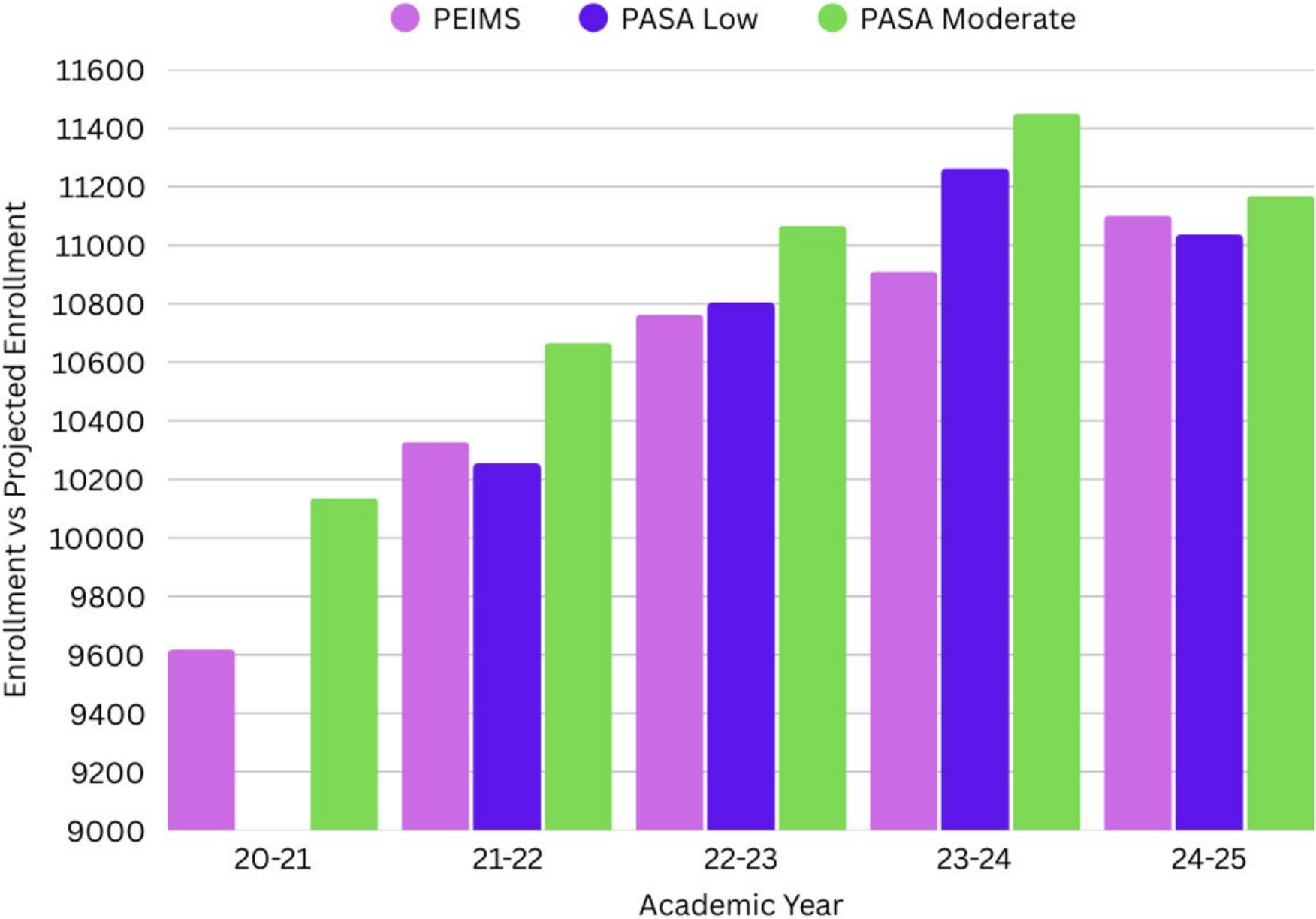
- Analyze budget vs. renovation efforts needed to implement the program
- Cost comparison to new construction
- Estimated time frames to be developed, including consideration of phased implementation

Report Out / Recommendation

- Report back to SFPFG
- Report back to FPPG
- Report to Boerne ISD Board of Trustees
- Boerne ISD Board of Trustees will determine the appropriate next steps for implementation

- 
- Welcome
 - SFPFG Past Work – A Brief Recap
 - FPPFG Summary
 - **District Update**
 - Discussion & Feedback

FIVE-YEAR ENROLLMENT: ACTUAL VS. PROJECTIONS



ELEMENTARY SCHOOLS: REDUCED MODEL

	Capacity	Current	2025-26	2026-27	2027-28	2028-29	2029-30	2030-31	2031-32	2032-33	2033-34
Cibolo Creek	800	438	423	444	482	523	556	608	663	714	751
Curington	700	639	588	577	519	493	480	486	497	510	523
Fabra	800	697	687	745	793	836	889	945	1022	1093	1173
Fair Oaks Ranch	800	821	776	780	770	747	755	761	776	787	799
Herff	800	615	593	622	651	674	730	787	848	907	965
Kendall	800	562	581	643	682	712	722	756	799	834	867
Van Raub	800	759	727	712	665	646	637	644	659	670	686
Viola Wilson	800	473	510	571	637	646	680	738	817	890	964
TOTAL	6,300	5,004	4,885	5,094	5,199	5,277	5,449	5,725	6,081	6,405	6,728

Light Blue = exceeds 100% of capacity

Purple = exceeds 120% of capacity

Source: Adapted from Population and Survey Analysts, Demographic Update, Reduced Model, January 2025

MIDDLE SCHOOLS: REDUCED MODEL

	Capacity	Current	2025-26	2026-27	2027-28	2028-29	2029-30	2030-31	2031-32	2032-33	2033-34
Boerne North	1,000	867	922	933	1,016	1,046	1,081	1,051	1,045	1,110	1,195
Boerne South	1,200	913	1,017	1,054	1,201	1,304	1,342	1,330	1,310	1,391	1,486
Voss MS	1,200	765	790	753	790	792	831	827	811	847	886
TOTAL	3,400	2,545	2,729	2,740	3,007	3,142	3,254	3,208	3,166	3,348	3,567

Light Blue = exceeds 100% of capacity

Purple = exceeds 120% of capacity

Source: Adapted from Population and Survey Analysts, Demographic Update, Reduced Model, January 2025

HIGH SCHOOLS: REDUCED MODEL

	Capacity	Current	2025-26	2026-27	2027-28	2028-29	2029-30	2030-31	2031-32	2032-33	2033-34
Boerne HS	1,900	1,517	1,522	1,573	1,578	1,665	1,671	1,751	1,860	1,890	1,965
Champion HS	2,600	2,099	2,103	2,252	2,294	2,441	2,557	2,692	2,978	3,093	3,220
TOTAL	4,500	3,616	3,625	3,825	3,872	4,106	4,228	4,443	4,838	4,983	5,185

Light Blue = exceeds 100% of capacity

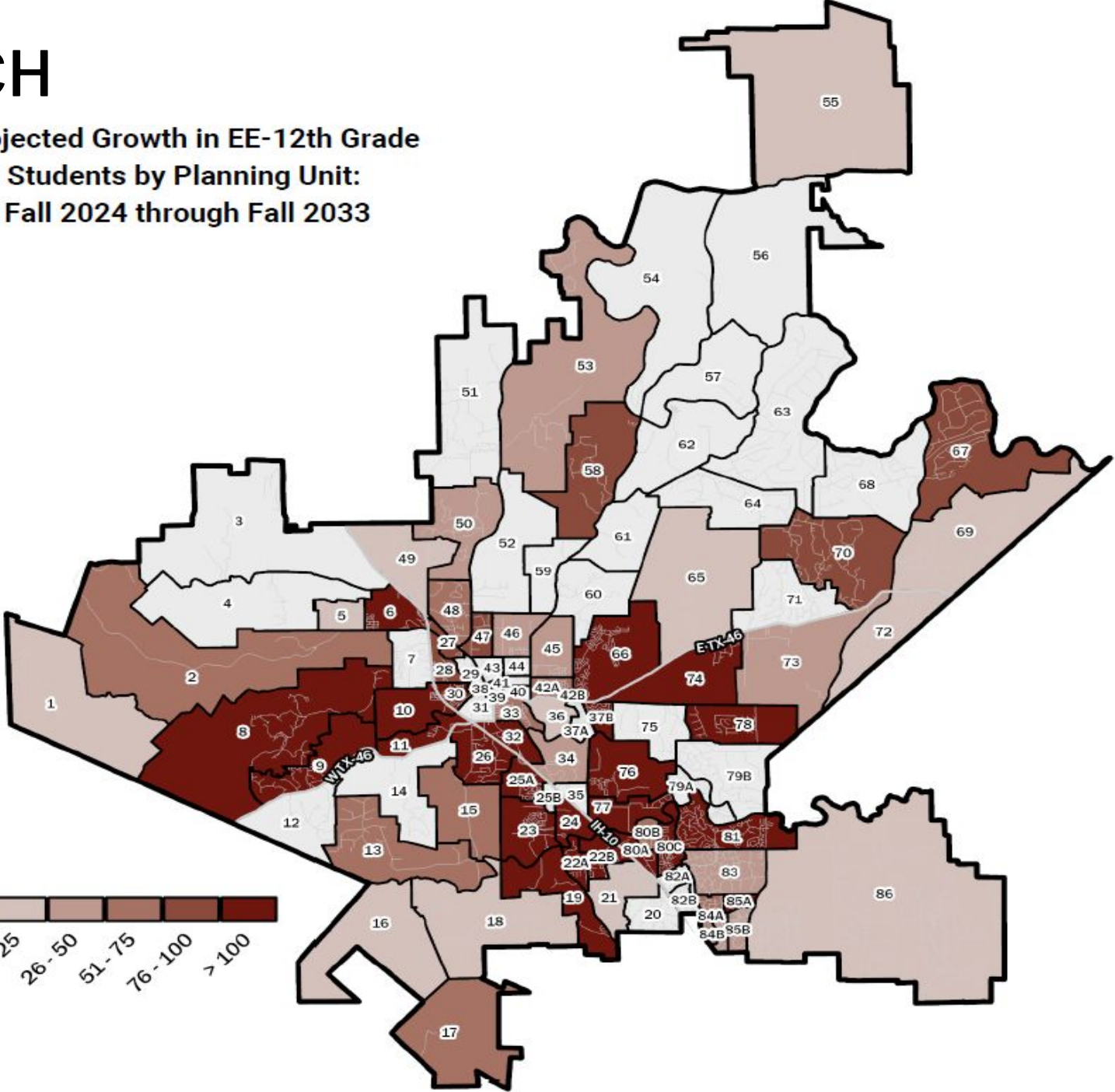
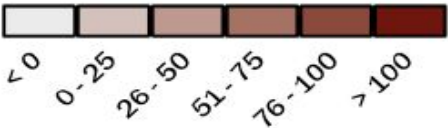
Purple = exceeds 120% of capacity

Source: Adapted from Population and Survey Analysts, Demographic Update, Reduced Model, January 2025

DEVELOPMENTS TO WATCH

- A. Shoreline Park (6)
- B. Highlands at Tapatio Springs (8)
- C. Miralomas (9)
- D. Bluff View MF (10)
- E. Birch at Spencer Ranch (11)
- F. Fox Falls (22A)
- G. Corley Farms (23)
- H. Regent Park (25A)
- I. Ranches at Creekside (37B)
- J. Esperanza (66)
- K. Lemon Creek MF (80A)

Projected Growth in EE-12th Grade
Students by Planning Unit:
Fall 2024 through Fall 2033



NEW DEVELOPMENTS TO WATCH

Development	Feeder Pattern	Notes	Projected Build Out
Bluff View	FES, BMSN, BHS	Multifamily: 192 planned units; projected yield of 0.35	2027
Shoreline Park	FES, BMSN, BHS	360 planned units; projected yield of 0.39	2028
Spencer Ranch	FES, BMSN, BHS	209 planned units; projected yield of 0.48	2028
Miralomas	FES, BMSN, BHS	433 planned units; projected yield of 0.31.	2033
Esperanza	HES, BMSN, BHS	485 planned units now and 2,219 planned units in Future Esperanza. Projected yield is 0.62.	2033
Corley Farms	VWE, BMSS, CHS	669 units now, and 496 units in Future Corley Farms.	2028
Fox Falls	VWE, BMSS, CHS	213 planned units; projected yield of 0.50.	2027
Regent Park	KES, BMSS, CHS	902 planned units; projected yield of 0.70. Over 412 current homes.	2028
Collection at Boerne	CCE, VMS, CHS	214 planned units; projected yield of 0.29	2028

**BMSN:
10.4 ACRES**



Aquatic Learning Center

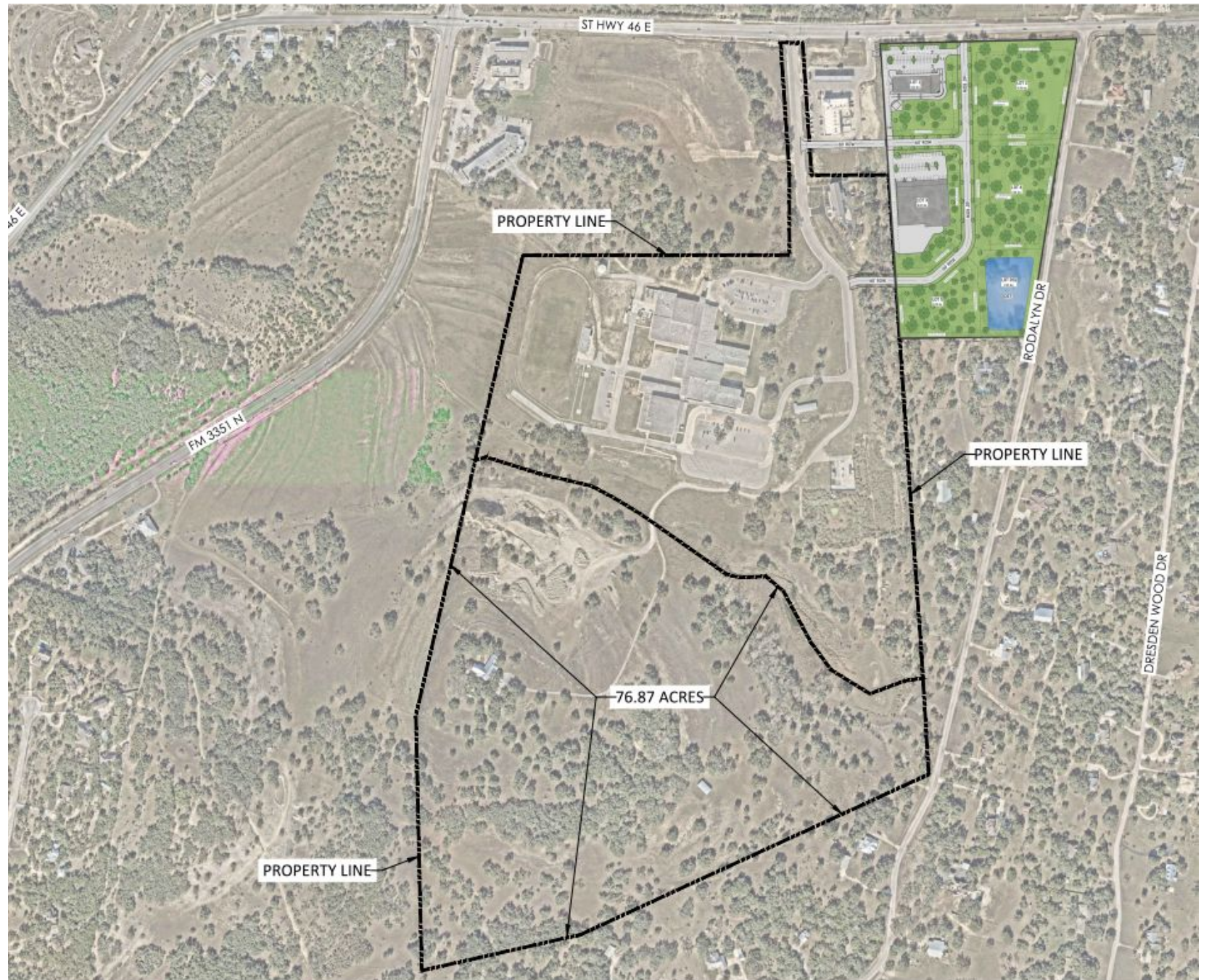


VOSS MS:

66 ACRES

**BUILDABLE
AREA:**

76 ACRES



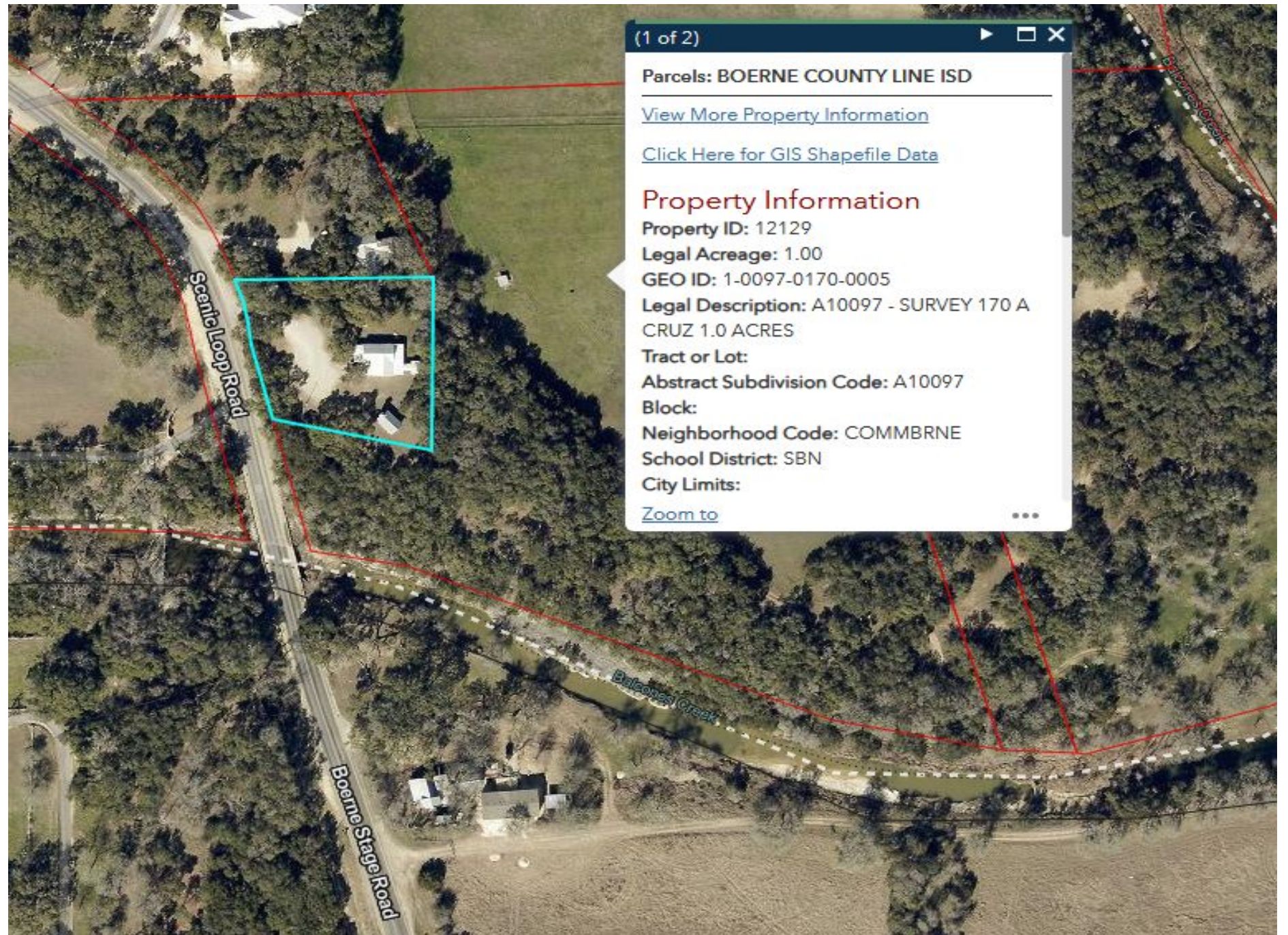
DUNNENBURG TRACT:

70 ACRES

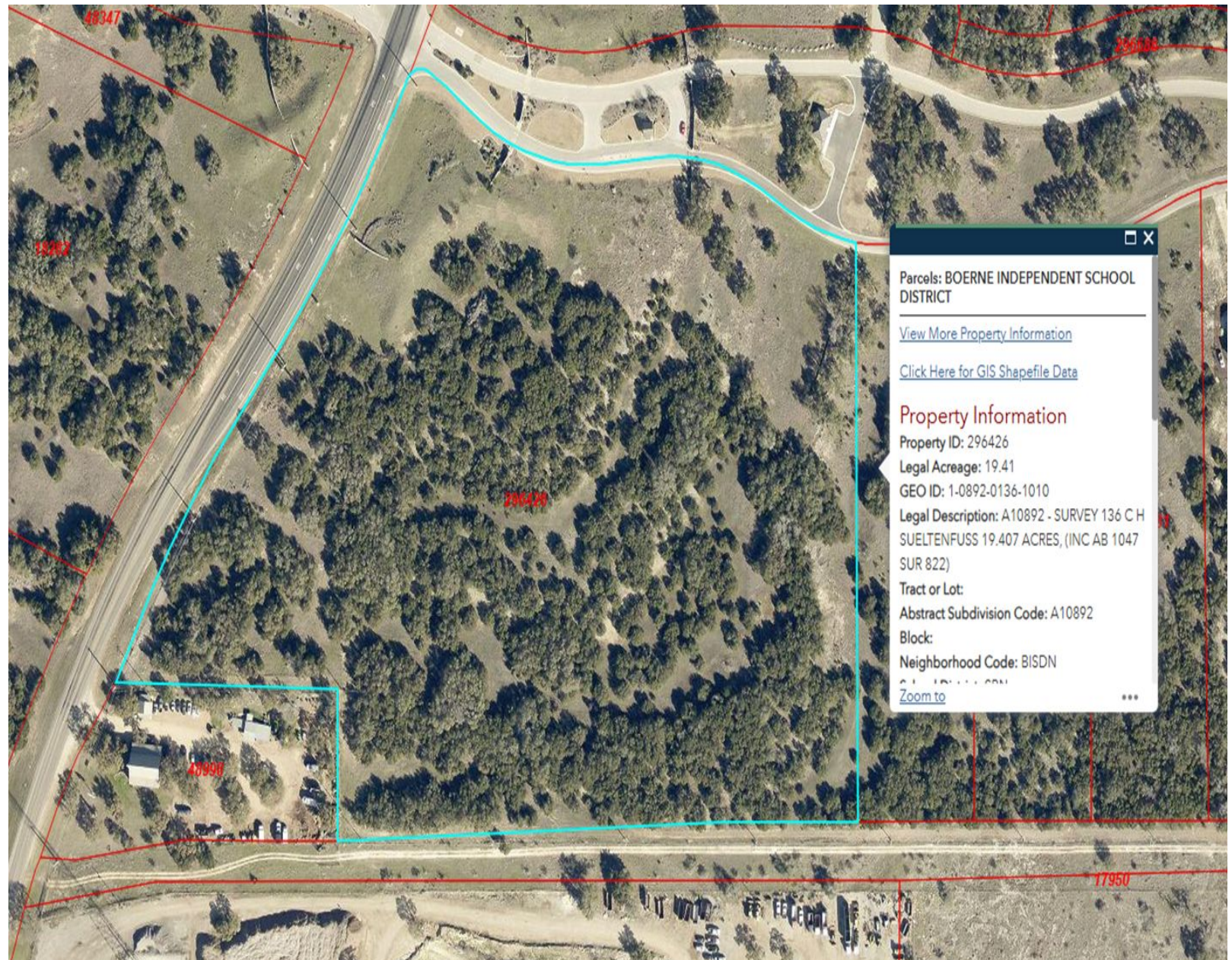


CURRENT UNUTILIZED LAND HOLDINGS

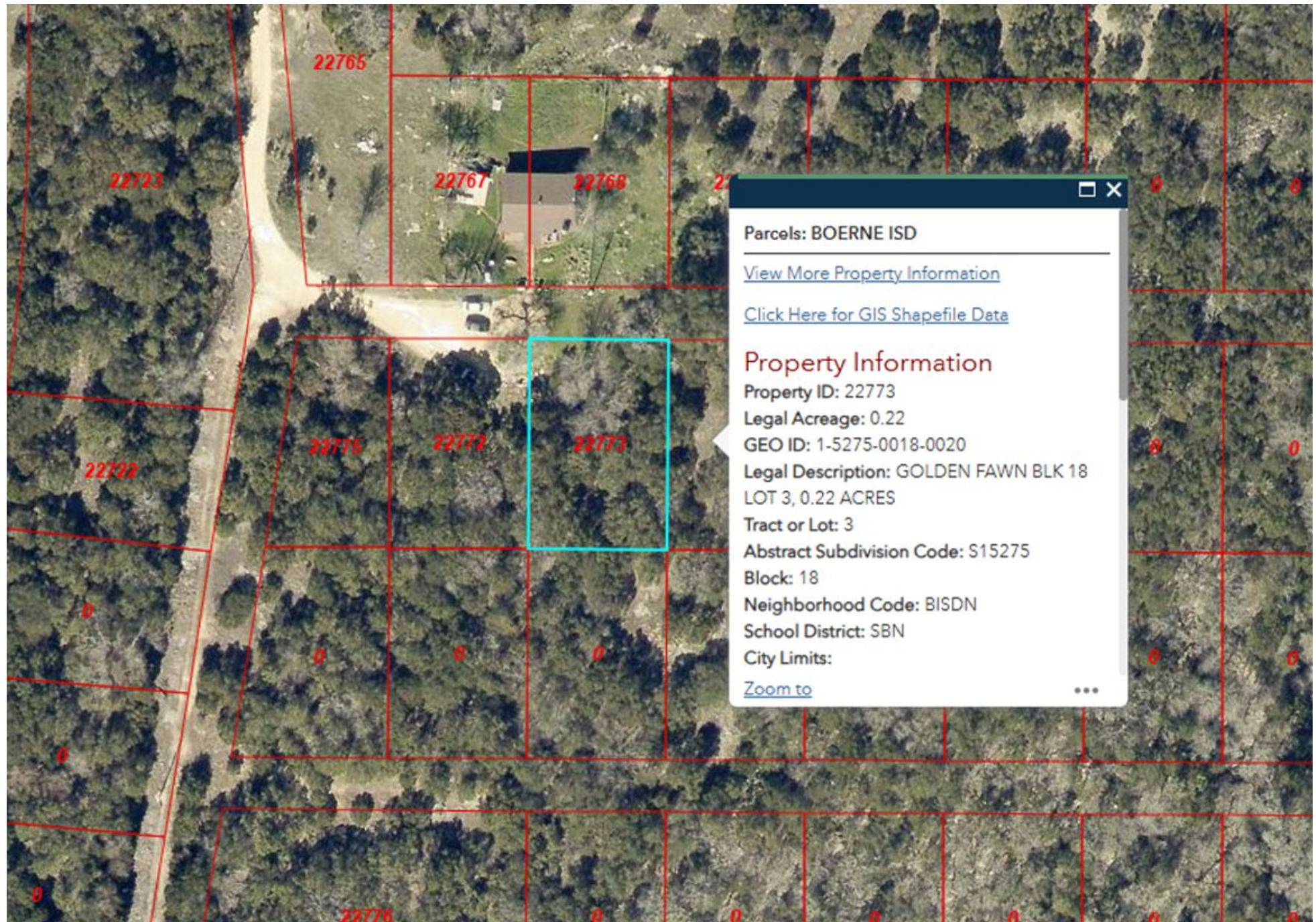
SCENIC LOOP PROPERTY: 1 ACRE



CORDILLERA SPRINGS PROPERTY: 19.41 ACRES



FM 474
PROPERTY:
0.22 ACRES



MORE THAN SCHOOLS

- Relocate Maintenance ... 5 acres
- Relocate Bus Barn ... 10 acres
- Football Stadium/Parking ... 35-40 acres
- Athletic Facilities ... 3-5 acres
- Technology Needs
- HVAC/Heating/Roofing Needs
- Safety & Security Needs
- Agricultural Barn Needs
- **Anything Else???**



- 
- Welcome
 - SFPFG Past Work – A Brief Recap
 - FPPFG Summary
 - District Update
 - Discussion & Feedback

EXIT TICKET

1. **Reaffirm Your Position:**
Based on what you learned today, share your thoughts on the original SFPFG recommendations.

*Yes, I am in full support **OR**
I still have questions (please share)*

2. **Temperature Check:**
Indicate your support for the proposed items.



“Hot”

Fully Support,
no reservations



“Warm”

Support, with few
reservations



“Lukewarm”

Mostly
Support



“Cool”

I can live
with this



“Cold”

I do not
Support

3. **Additional Comments**

SFPFG/BOC EXIT TICKET

Reaffirm Your Position:
Based on what you learned today, reaffirm your stance with these previous recommendations made by the SFPFG:

- 1) Given the site constraints of BMSN, consider building a new BMSN and convene a team to explore how to leverage the current BMSN facility to meet long-term educational needs of BISD
- 2) Establish a preferred student capacity for middle schools at 1,200 students.
- 3) Explore the expansion of current district land portfolio to provide options for the growing needs.
- 4) Convene a long-range planning committee to consider district needs and timing of projects (i.e., stadium).
- 5) Maximize existing facilities strategically to postpone the need for High School #3.

Yes, I am in full support!	I still have questions... (Please share)

Temperature Check:
Indicate your support for these proposed items:

- 1) The FPFPG recommendation of repurposing BMSN into a CTE-focused facility.
- 2) Address needs at BMSN that address necessary upgrades to the campus, while aligning with the maximum-desired student capacity of 1200 students.
- 3) Form a boundary committee to look at enrollment/projections district-wide, to maximize capacity availability across all existing BISD campuses.

Hot / Fully Support ← → Cold / Do Not Support

😊	😊	😊	😊	😊	😊
😊	😊	😊	😊	😊	😊
😊	😊	😊	😊	😊	😊

ADDITIONAL COMMENTS:

Please print your name: _____