

INSTRUCTIONAL FOCUS



Highlighted



**Early
Learning**



**Middle
School**



CTE



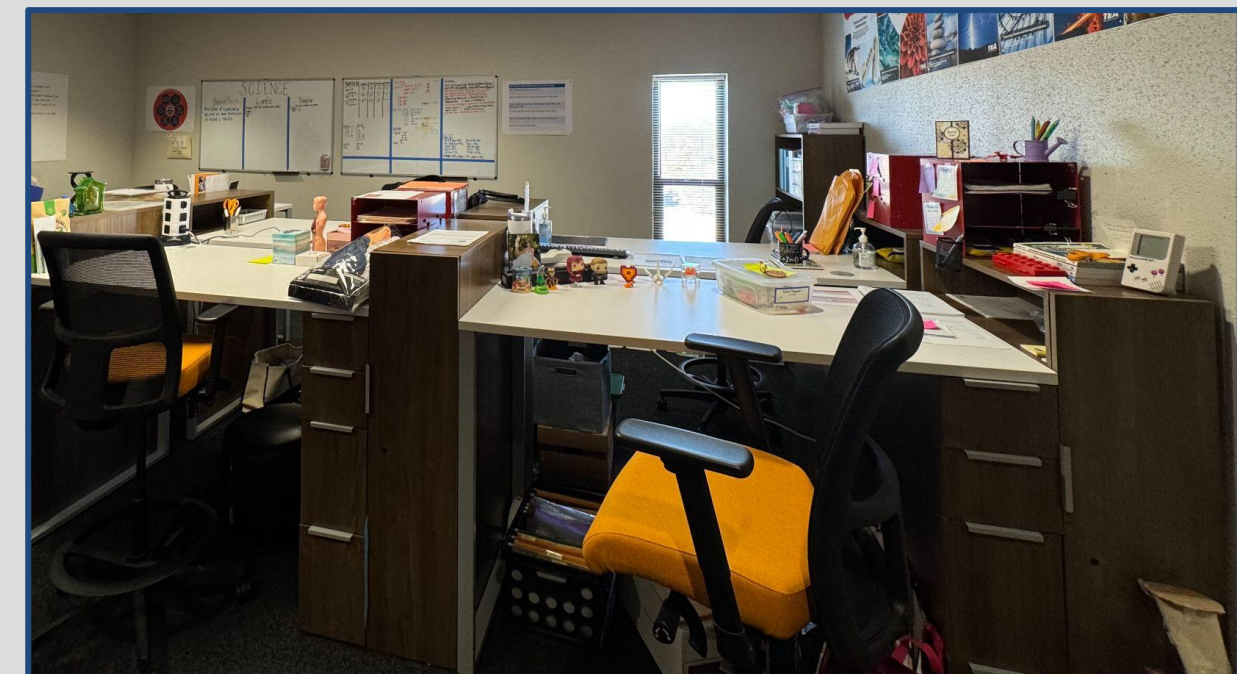
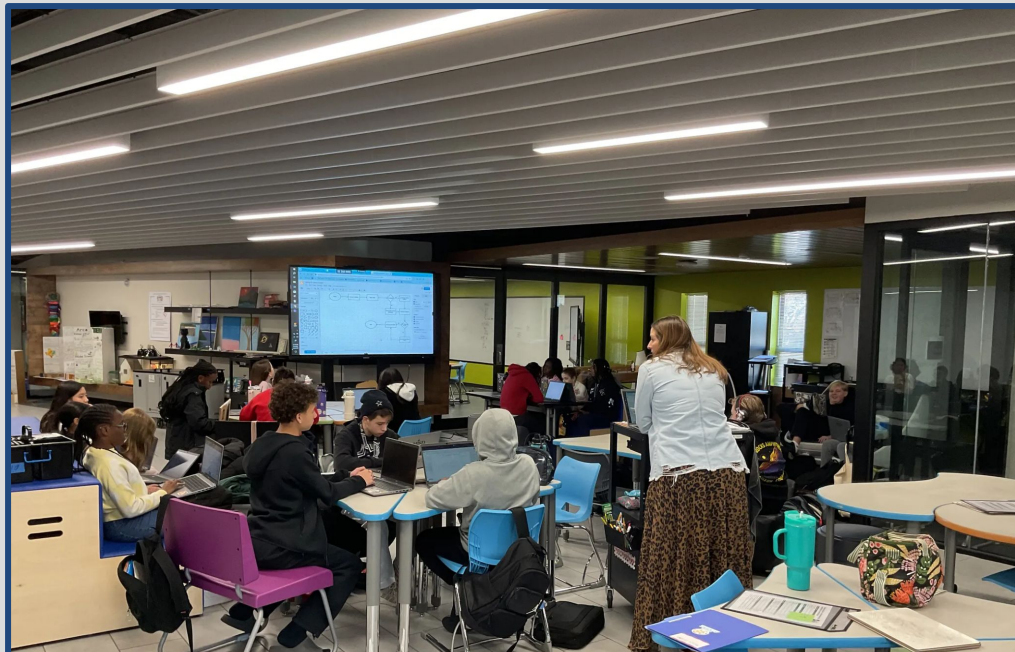
**Post
Secondary**

DFW - Mansfield ISD-Jerry Knight STEM Academy



Knight STEM Academy is a repurposed facility focused on STEM-based instruction (labs, collaborative spaces, makerspaces, etc.)

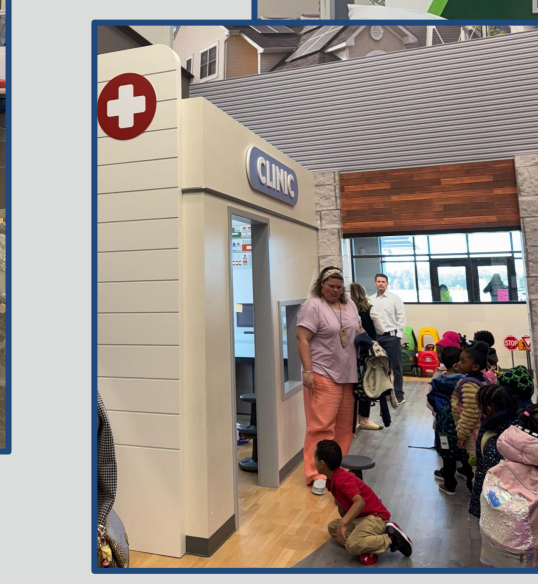
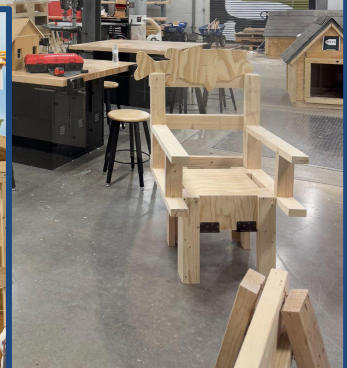
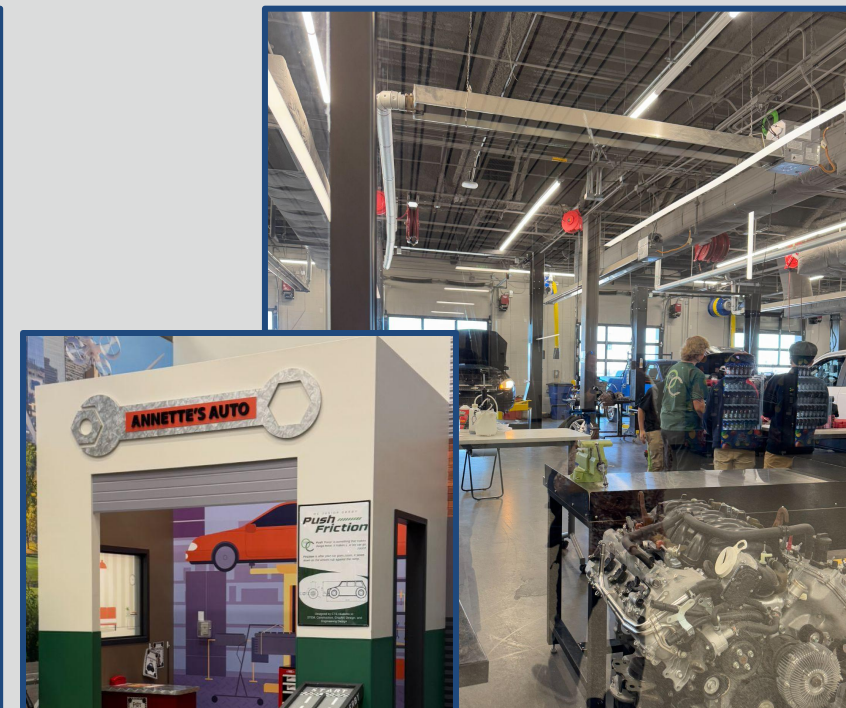
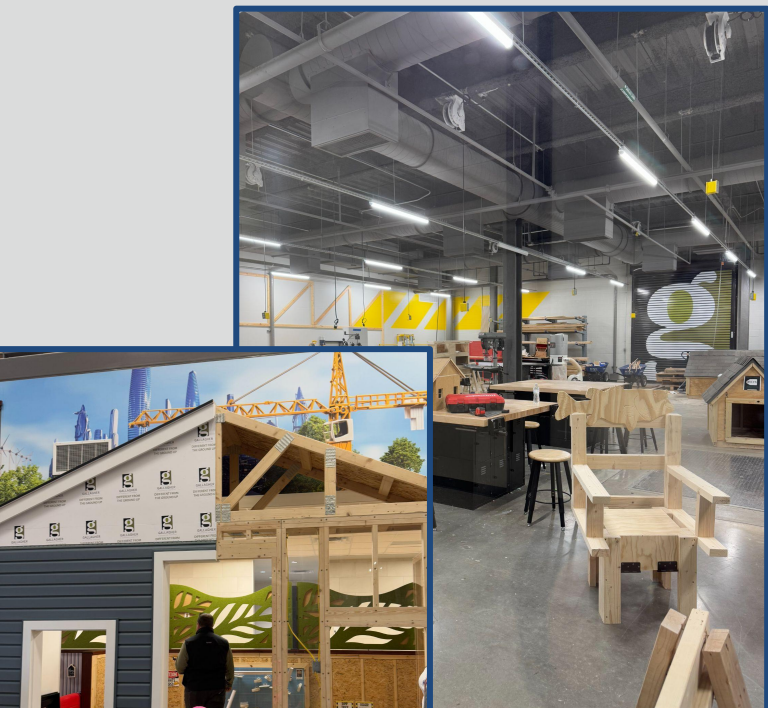
- MS Honors “learners” eligible to attend
- “Designers” teach not only STEM courses, but core content as well leading to consistent cross-curricular instruction.
 - “Designers” do not have specific classrooms, instead they share planning spaces.



DFW - Forney ISD-The Keith Bell Opportunity Central (The OC)

FISD The OC is a community-centered facility with elements open to the public (shopping, restaurants, events spaces, tech spaces).

- College campus “feel”/Shopping mall “feel”
- High school CTE labs, makerspaces, and classrooms
 - CTE students work at the shops of business partners and students fully run Blooms, the flower shop.
 - Many CTE programs have a public-facing retail element.
- OC Junior-PK program-Entrepreneurial play areas replicate The OC's high school CTE programs.



DFW - Allen ISD STEAM Center

AIISD's STEAM Center is a multi-purpose facility combining HS STEAM classrooms/labs/makerspaces with destination field experiences for ES and MS.

- Highly flexible indoor and outdoor learning spaces
- College campus “feel”
 - High school students shuttle to attend classes at the center.
 - The center can accommodate up to 500 students per class period.
- Field experience center-every school day hosts a single grade from an ES or MS campus for a day of STEAM learning.



Houston - Alief ISD, Katy ISD, Bellville ISD



Highlights:

- Bellville community space
- STEM/Robotics Katy ISD
- Culinary serving spaces KISD and BISD

Quality instruction happens in a variety of spaces.

Spaces to support and serve partners and the greater community would benefit Boerne ISD.

Houston - Tomball ISD, Goose Creek CISD, HCC Collaboratorium



Highlights:

Tomball ISD-Tomball Innovation Center (*repurposed building*)

- The Tomball Innovation Center, part of the Tomball Independent School District (TISD), offers specialized Career and Technical Education (CTE) programs that are exclusively available at this dedicated facility. The exclusive programs at the Tomball Innovation Center include:

Aviation Pilots, Aviation Maintenance, Electrical Technology, Robotics, Law Enforcement.

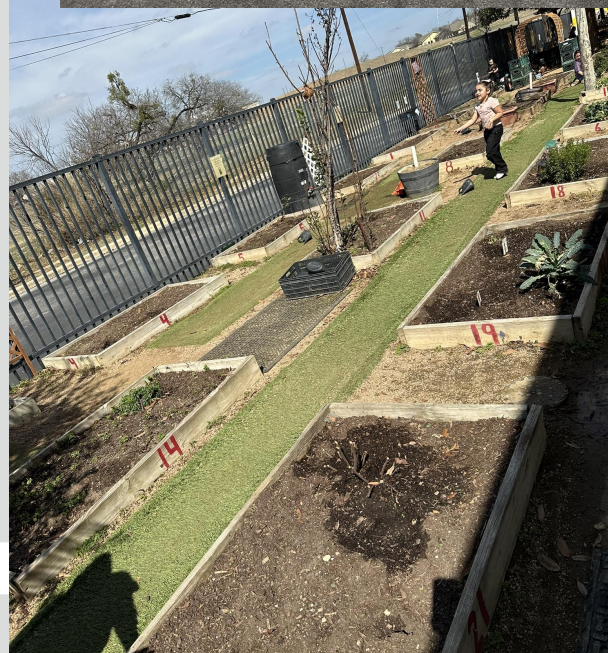
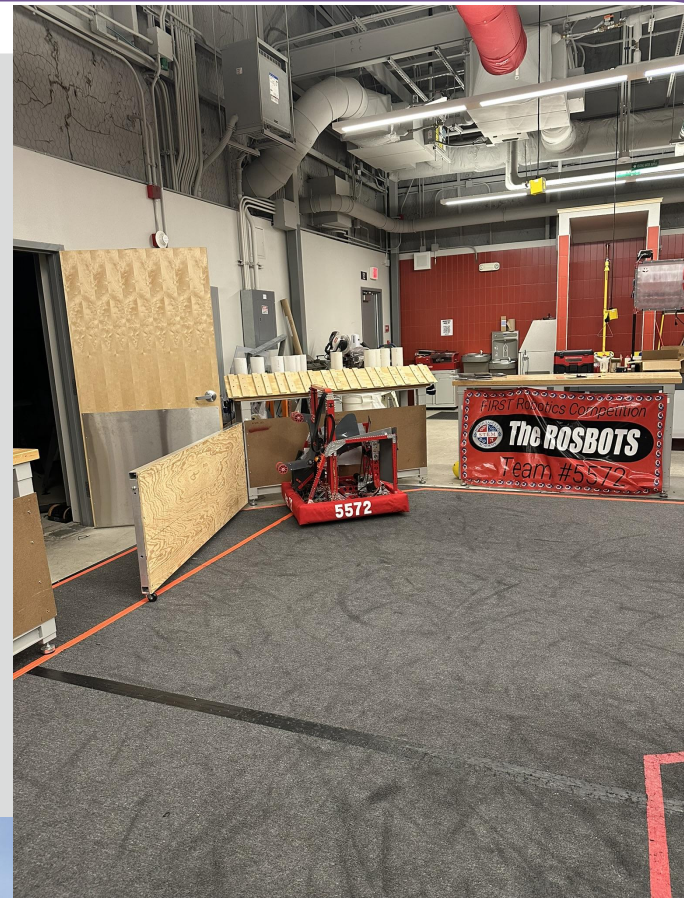
Goose Creek CISD CTE Programs (*repurposed building*)

- The district offers CTE courses at various high schools and dedicated facilities, such as: **Stuart Career Tech High School** – A standalone campus focused on career and technical training.

HCC Collaboratorium West Houston Institute high-tech space designed for collaboration, innovation, and problem-solving.

- It features interactive technology, flexible workspaces, and expert facilitation for strategic planning, workshops, and networking events.
- It includes a large interactive **Nureva Wall**, breakout rooms, and gathering spaces to enhance teamwork and creativity.
- Available for HCC and external organizations, it provides a dynamic environment for brainstorming and developing actionable solutions.

San Antonio - Northeast ISD, Northside ISD, Pre-K 4SA, Science Mill



Highlights:

- Construction Careers Academy
- Pre-K 4SA South- closing the facility/ moving to new location
- Science Mill- Johnson City
- NEISD STEM Academy
 - NEISD- middle school- same struggle with space

Both indoors and outdoor learning areas and creative learning environments



San Antonio - Northside ISD Health Careers

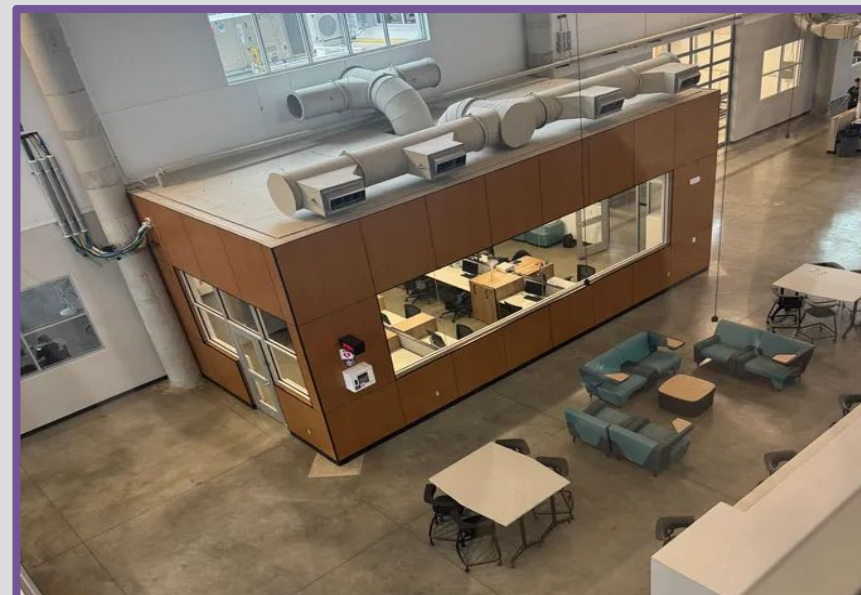
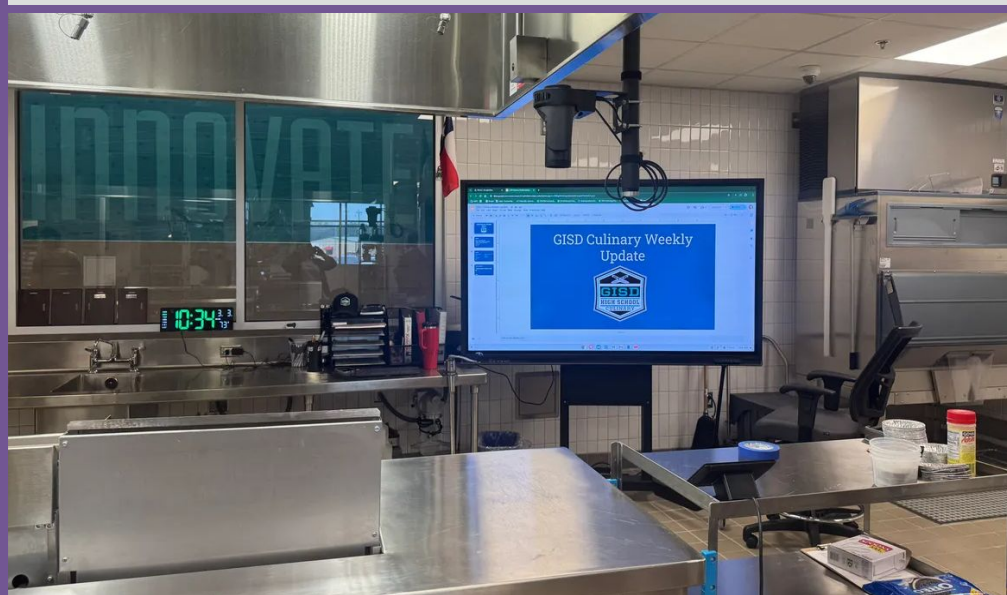
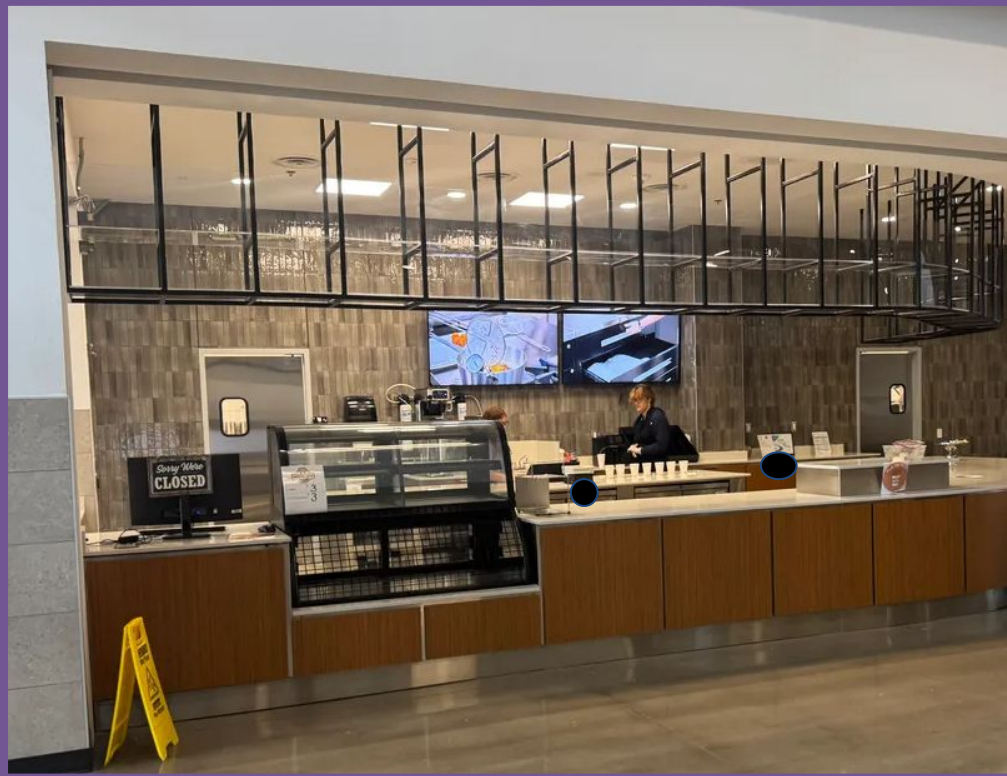


- Opened 1984; CTE Wing 2020
- Only stand alone magnet in NISD, only HS on block schedule to allow for practicum blocks of 3 hrs
- 900 students, grades 9-12
- Students accepted from within and outside NISD with passing STAAR
- Fine Arts - Orchestra, Band, Choir, Art
- Lifetime sports - golf, swimming, water polo, tennis
- Certifications - CNA, Phlebotomy, Pharmacy Technician, Sterile Processing, Registered Dental Assistant
- Program is geared to students not needing additional supports

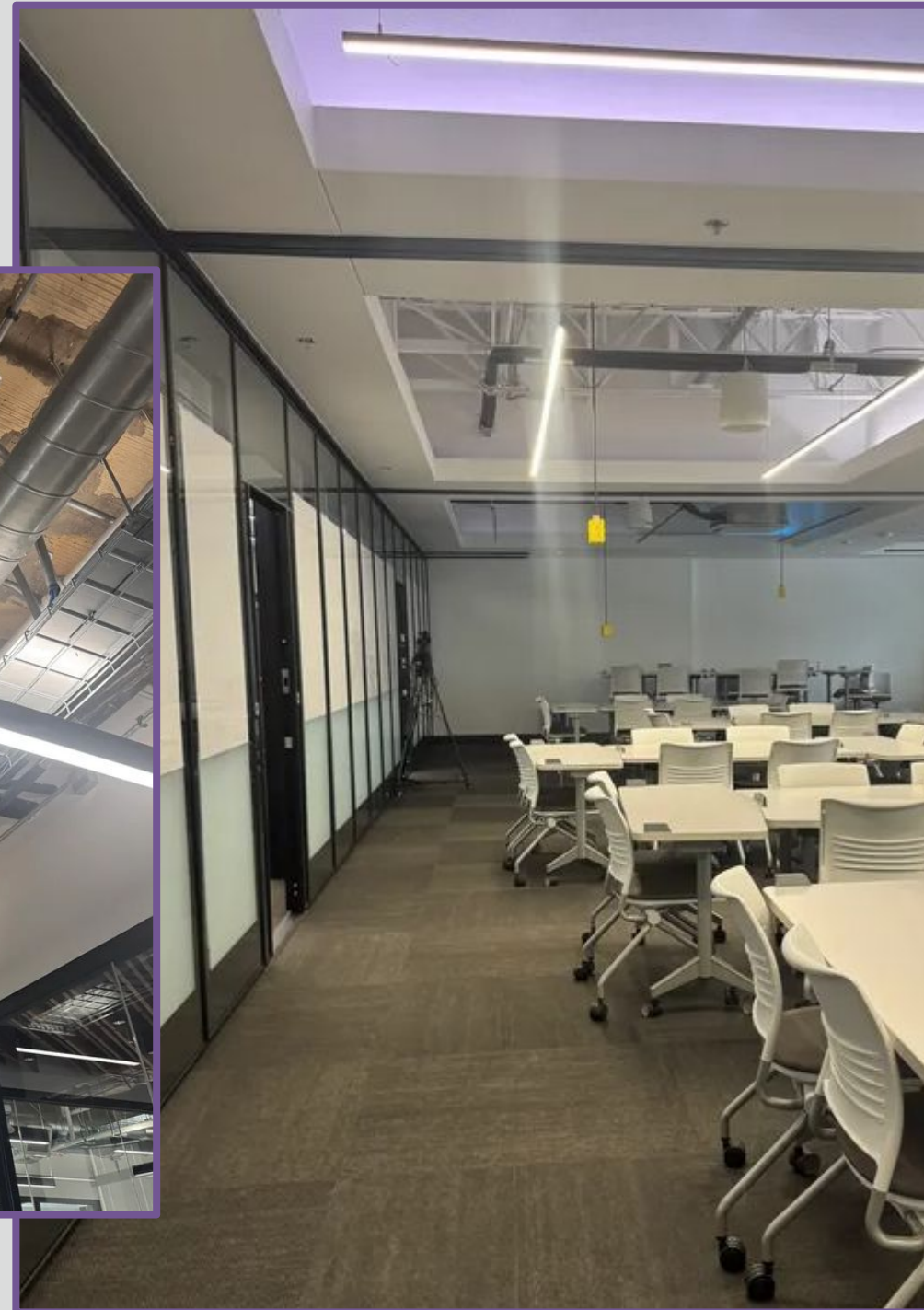
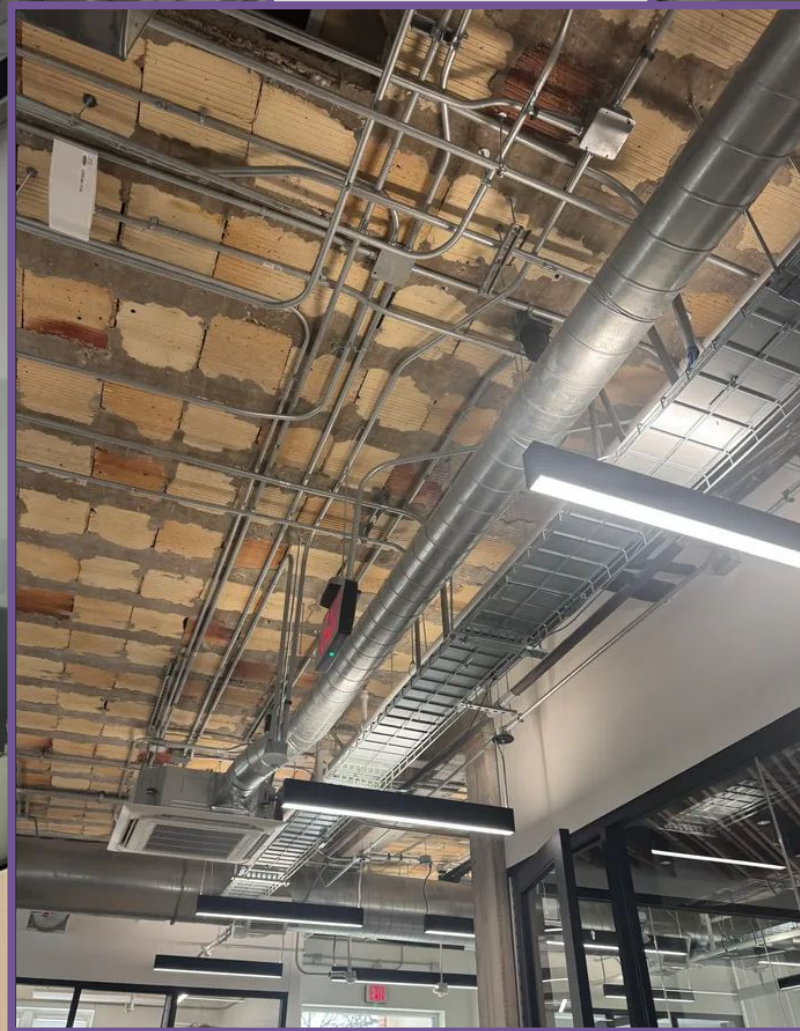
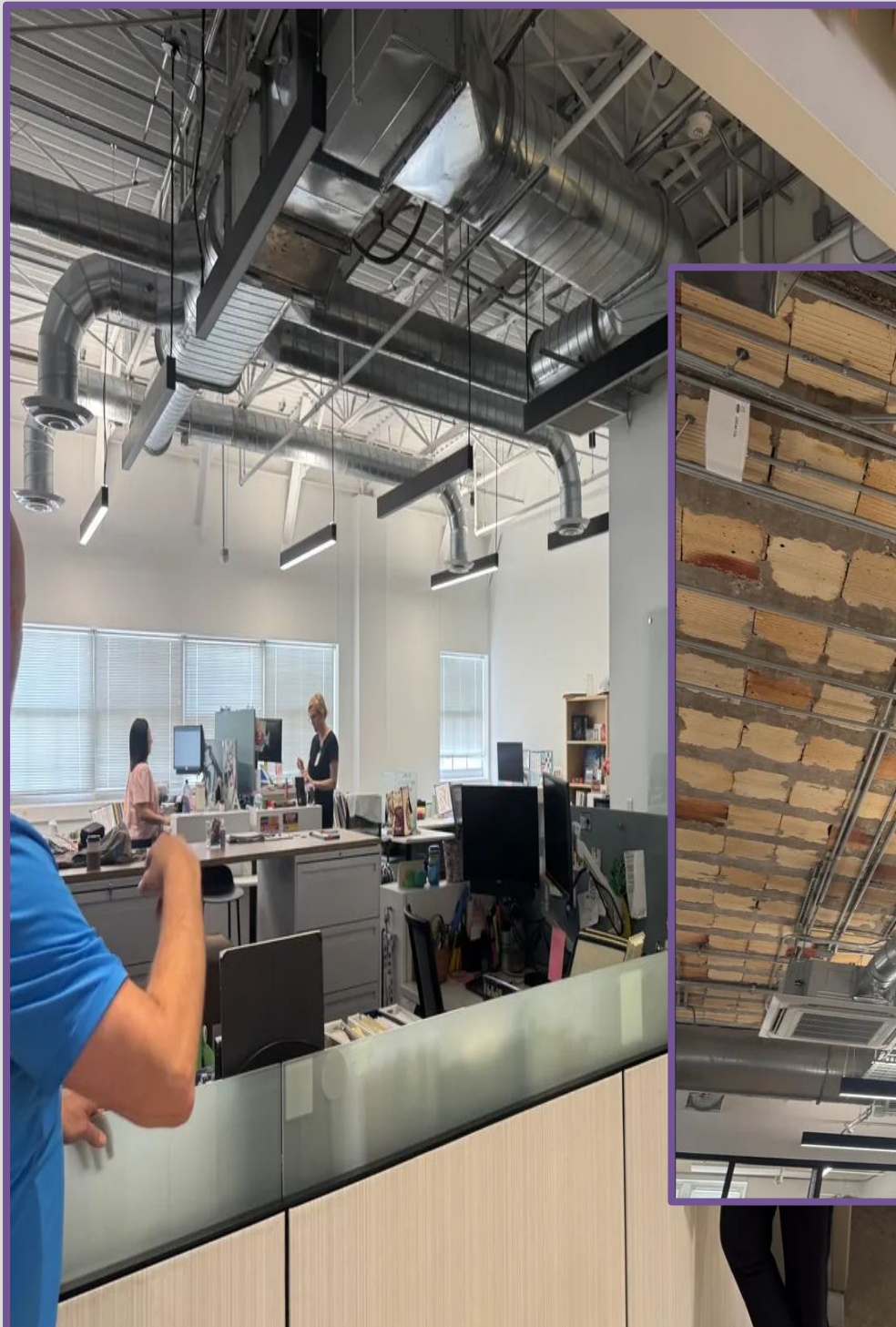
Austin - Georgetown ISD - Future Ready Complex & EC Center

Highlights

- Variety of CTE Programs: Advanced Engineering, Automotive, Aviation, Cosmetology, Culinary Arts, Drones, Health Science, Rocketry
- Facility for Advanced CTE Courses
- Multi-Use (also houses 18+ & Alternative)
- EC Learning Center on the same property (CTE learning opportunities)



Georgetown ISD - Hammerlun Center for Leadership & Learning



Highlights

- Originally built in 1917
- Repurposed for Professional Learning, Central Office & Board Room
- Flexible Collaborative Areas, Walls and Usage