

Discussion of Strategic Facilities Planning Focus Group and Bond 2022

Presentation to the Board
May 12, 2025

Purpose

- Strategic Facilities Planning Focus Group
- Future Programming Focus Group
- District Update
 - Demographic Report
 - Bond 2022 Update
- Discussion

STRATEGIC FACILITIES PLANNING FOCUS GROUP

Composition + Charge

- Composed of invested community members focused on the future of Boerne ISD
- A source of insight and feedback about the quality of education and operations of the district
- Committed to open and meaningful dialogue to propel the sharing of ideas and solutions
- Fall 2023 through April 2024



Meeting 1

EXISTING FACILITIES

Nov. 6, 2023

Independent Work

PARITY

Dec. 2023

Meeting 3

POLICY

Feb. 7, 2024

Meeting 4

FUTURE FACILITIES

March 6, 2024

Meeting 5

RECAP

April 17, 2024

Meeting 1

EXISTING FACILITIES

Nov. 6, 2023

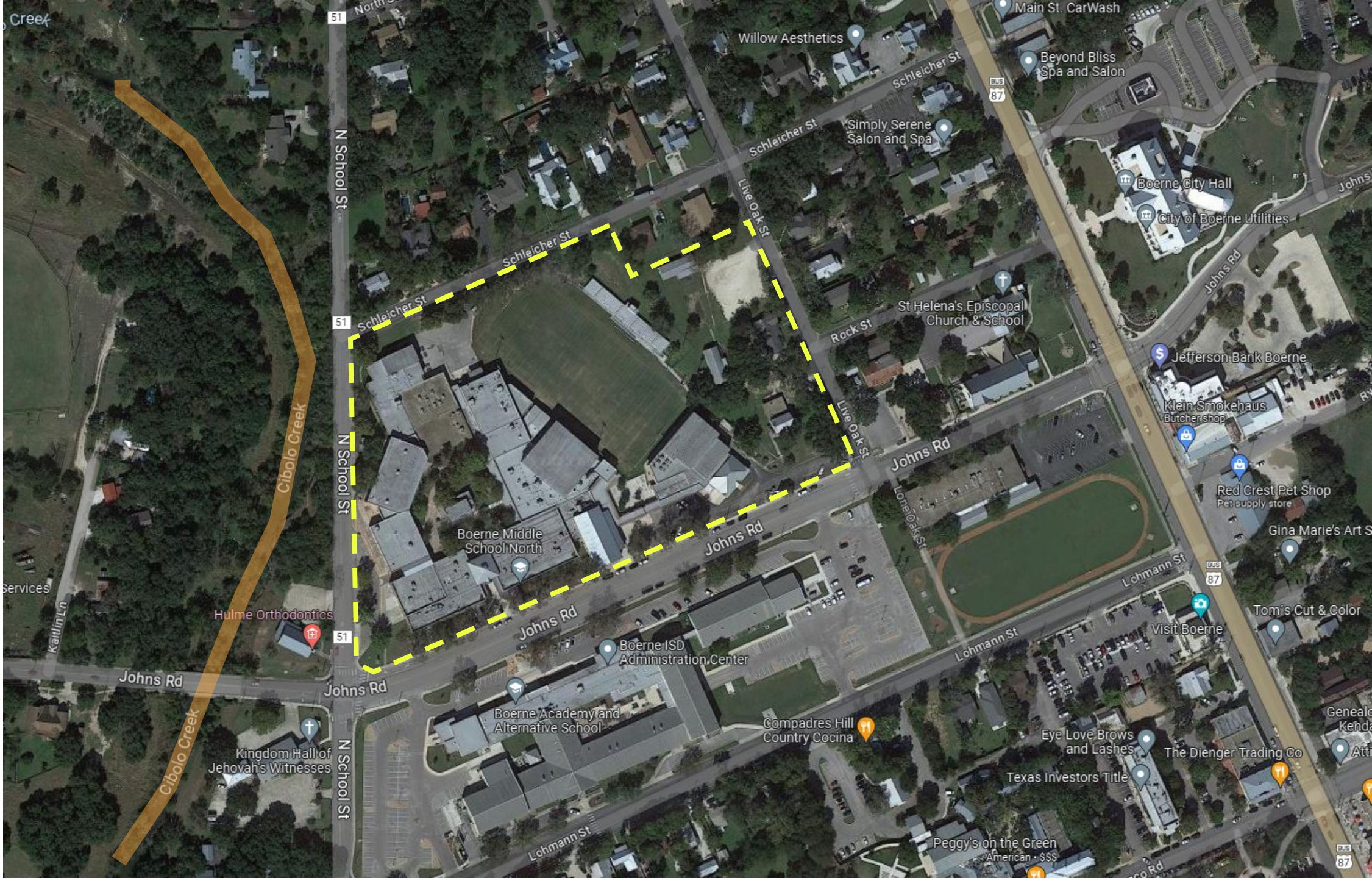


Boerne MS North



Boerne ISD Stadium

Boerne Middle School North



Boerne ISD Stadium



Meeting 3



Feb. 7, 2024



Expert Panel



Table Discussions

Meeting 4

FUTURE FACILITIES



Demographics



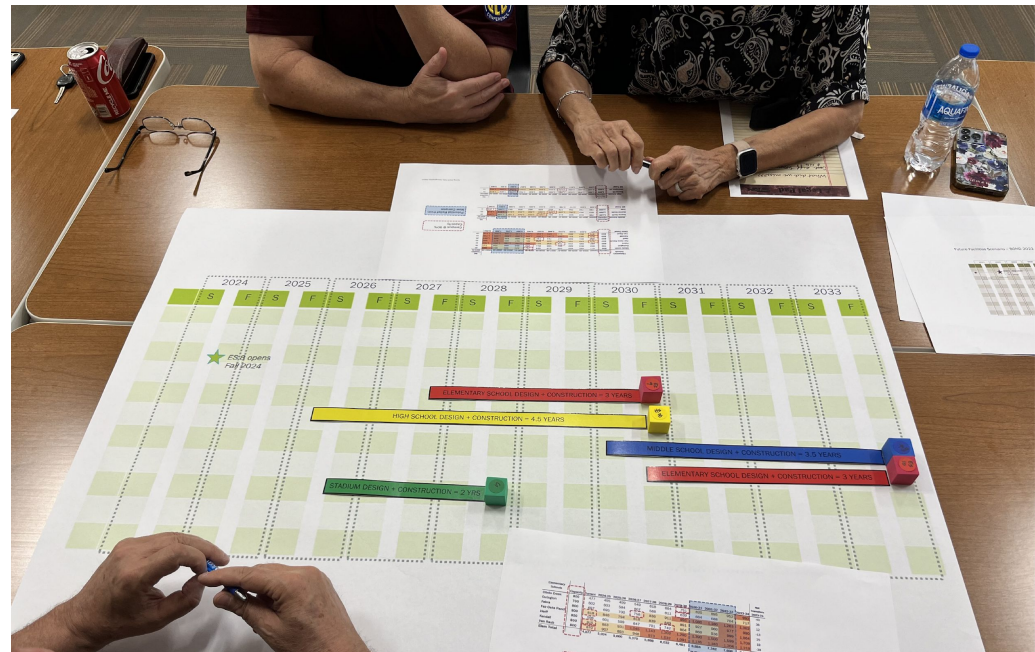
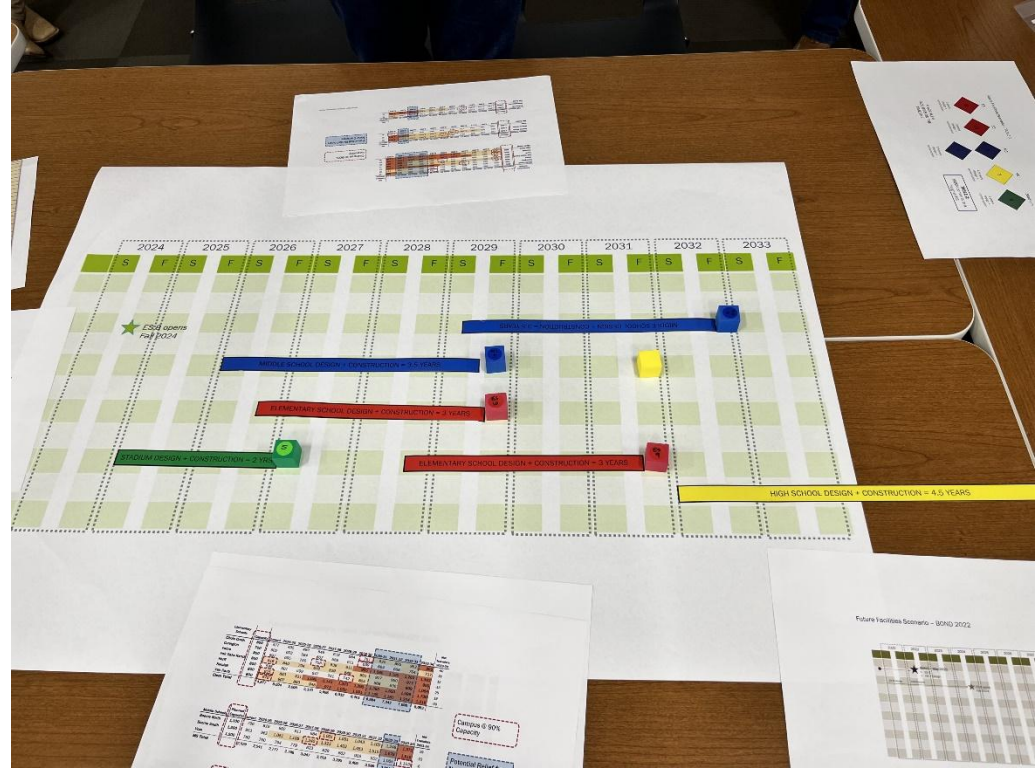
New Facilities



Land Acquisition

March 6, 2024

Future Facilities Planning Activity



SFPFG Recommendations (April 2024):

- 1) Given the site constraints of BMSN, consider building a new BMSN and convene a team to explore how to leverage the current BMSN facility to meet long-term educational needs of BISD**
- 2) Establish a preferred student capacity for middle schools at 1,200 students**
- 3) Explore the expansion of current district land portfolio to provide options for the growing needs**
- 4) Convene a long-range planning committee to consider district needs and timing of projects (i.e., stadium).**
- 5) Maximize existing facilities strategically to postpone the need for high school #3.**

A group of baseball players in orange and white uniforms are celebrating on the field. They are wearing helmets and some have their arms raised. A coach in a dark jacket and cap is also visible among them. The background shows a blurred crowd of spectators.

Future Programming Focus Group

Oct 2024 – April 2025

pfluger

FUTURE PROGRAMMING FOCUS GROUP

Composition + Charge

- Composed of invested BISD staff who are focused on the future of Boerne ISD
- A source of insight and feedback about the future of educational programming and how facilities enhance these current and potential future needs
- Committed to open and meaningful dialogue to propel the sharing of ideas and solutions
- October 2024 to April 2025



EC - 12 CONTINUUM




EC-2nd
Phenomenon/Inquiry
Based Learning

3rd - 5th
Exploratory Learning

6th - 8th
Connections to Career

9th - 12th
Empowered with
Transferable Skills

FPFG SEQUENCE:



SFPFG RECAP

OCT. 8, 2024



**A REVIEW OF
BOERNE ISD**

NOV. 4, 2024



TOURS

DEC. 2024 –
MAR. 2025



**SITE VISIT
REPORT OUT**

MAR. 20, 2025



**SYNTHESIS &
CONCURRENCE**

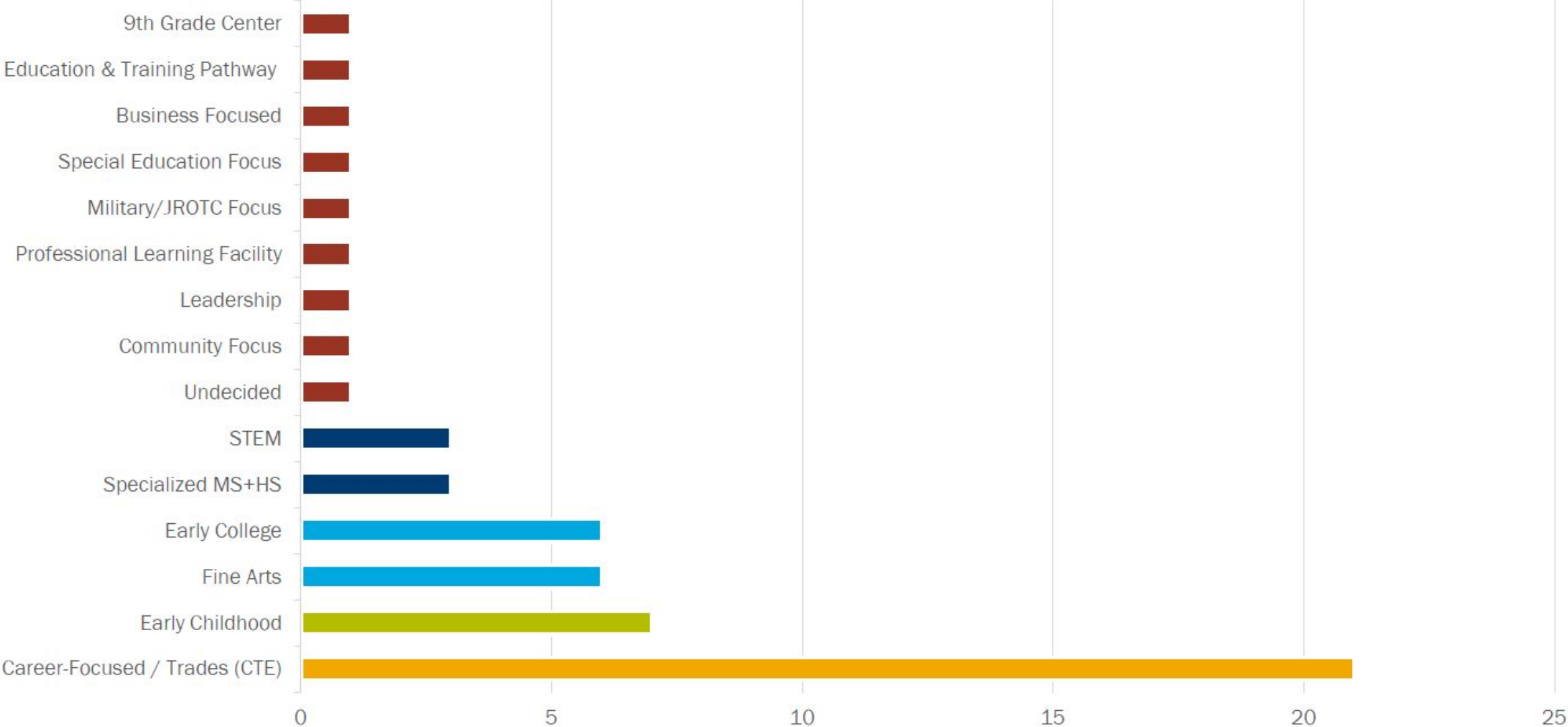
APR. 2, 2025

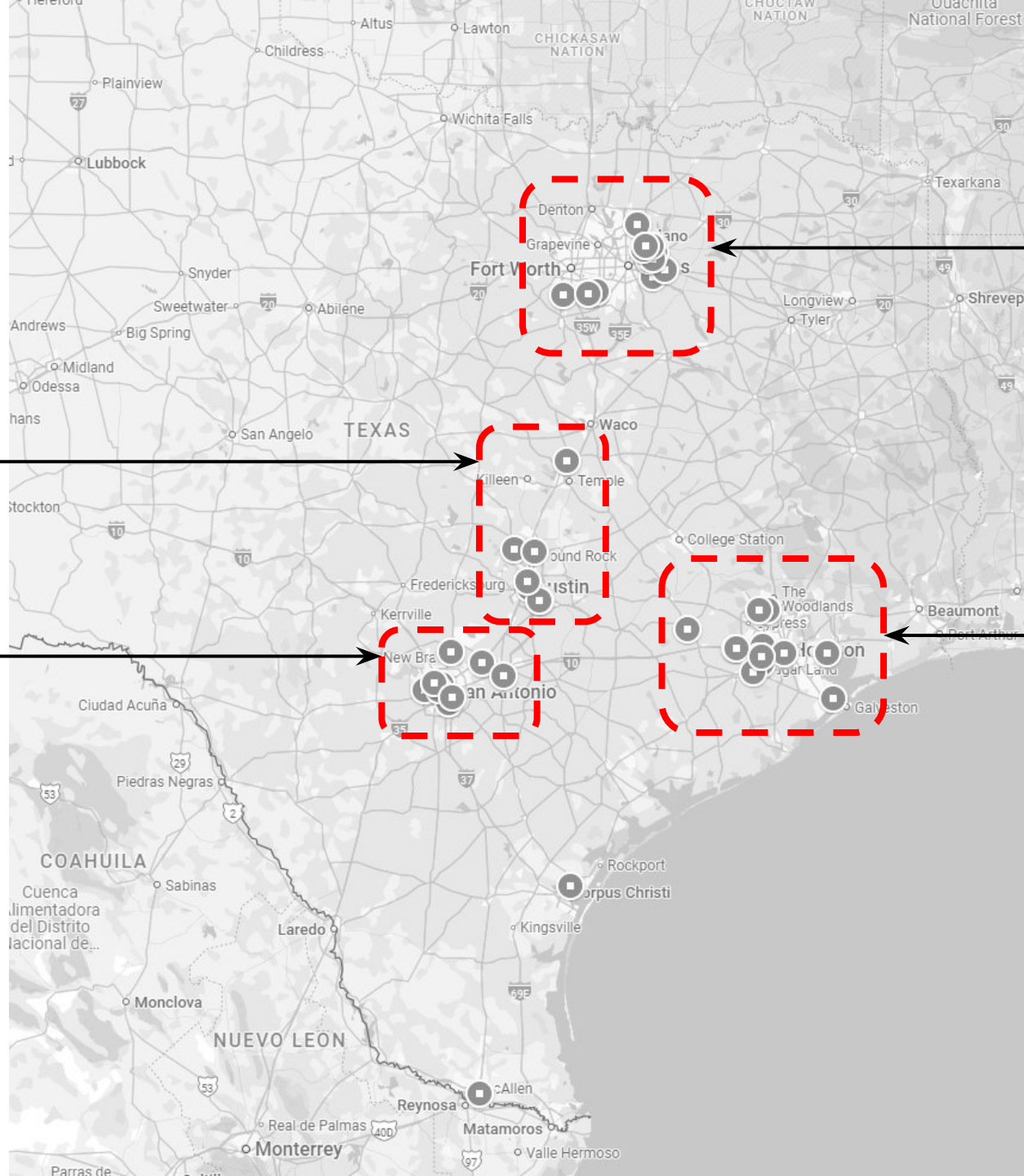


REPORT OUT

MAY 12, 2025

WHAT SPECIALIZED PROGRAM WOULD BENEFIT BOERNE?





DFW-Area Tours

Austin-Area
Tours

SA-Area Tours

Houston-Area Tours

17 Site Visits

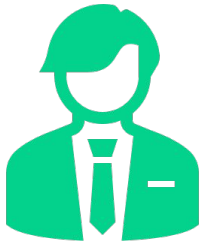
NISD Health Careers
NEISD STEM
Science Mill
Georgetown FRLC
Bellville Learning
Katy STEAM
Katy Career & Tech.
Tomball IC
Stuart Career Tech. HS
Mansfield STEM
Allen STEAM
Forney OC

COSA
PreK4SA
Forney OC

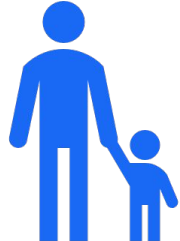
Alief ECHS
Tomball IC
Forney OC

Georgetown
FRLC

Georgetown Hammerlun Ctr.
Bellville Learning Ctr.
Tomball IC
HCC Collaboratorium
Forney OC



Career &
Technical
Education



Early
Childhood
Standalone
PK 3-4



Early
College
College or
university &
P-TECH



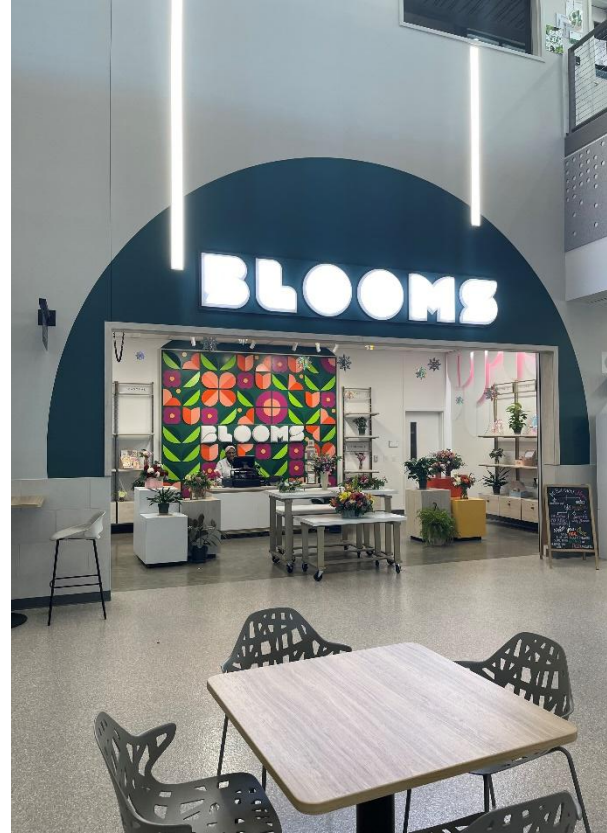
Enhanced
Academics
Includes
Classical
Studies & IB



Fine
Arts



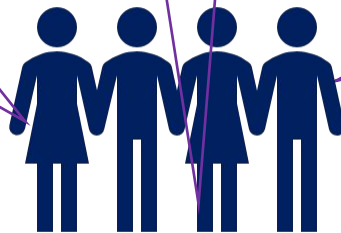
Community
Admin.



“Sometimes if we look outside the box, amazing opportunities can happen!”

“...it takes more than an innovative building to create a useful learning space for students...professional development and student voice are equally essential to creating effective learning...”

“Overall, this trip and these visits have changed my mindset from building additional, comprehensive schools to addressing our growth, student needs and preparedness, and our community’s needs...”



NEXT STEPS:

Develop the Program

- Study student interest
- Study workforce data and projections
- Determine what Business, Industry, or other External Partnerships are needed
- Determine courses, levels to be offered at a CTE site vs. home campus
- Led by Teaching & Learning Dept.

Facility Assessment

- Assess Overall Building + Site Conditions (systems, structure, etc.)
- Assess Functional Condition of the Building + Site (capacity, space adjacencies, level of renovation, etc.)
- Assessments done through the lens of the Program Requirements

Cost Implications

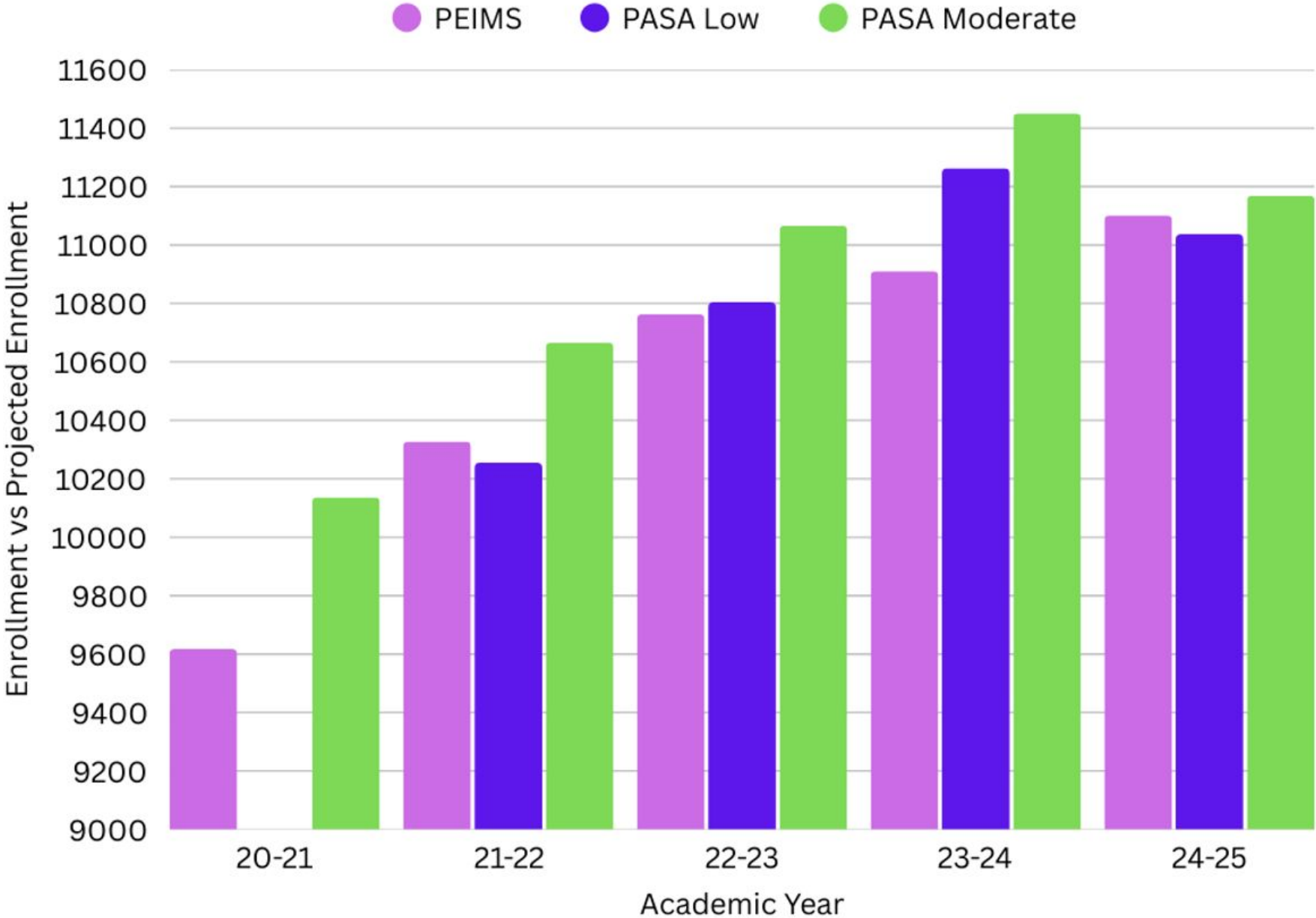
- Analyze budget vs. renovation efforts needed to implement the program
- Cost comparison to new construction
- Estimated time frames to be developed, including consideration of phased implementation

Report Out

- Report back to SFPFG
- Report back to FPPG
- Report to Boerne ISD Board of Trustees
- Boerne ISD Board of Trustees will determine the appropriate next steps for implementation

District Update

FIVE-YEAR ENROLLMENT: ACTUAL VS. PROJECTIONS



ELEMENTARY SCHOOLS: REDUCED MODEL

	Capacity	Current	2025-26	2026-27	2027-28	2028-29	2029-30	2030-31	2031-32	2032-33	2033-34
Cibolo Creek	800	438	423	444	482	523	556	608	663	714	751
Curington	700	639	588	577	519	493	480	486	497	510	523
Fabra	800	697	687	745	793	836	889	945	1022	1093	1173
Fair Oaks Ranch	800	821	776	780	770	747	755	761	776	787	799
Herff	800	615	593	622	651	674	730	787	848	907	965
Kendall	800	562	581	643	682	712	722	756	799	834	867
Van Raub	800	759	727	712	665	646	637	644	659	670	686
Viola Wilson	800	473	510	571	637	646	680	738	817	890	964
TOTAL	6,300	5,004	4,885	5,094	5,199	5,277	5,449	5,725	6,081	6,405	6,728

Light Blue = exceeds 100% of capacity

Purple = exceeds 120% of capacity

Source: Adapted from Population and Survey Analysts, Demographic Update, Reduced Model, January 2025

MIDDLE SCHOOLS: REDUCED MODEL

	Capacity	Current	2025-26	2026-27	2027-28	2028-29	2029-30	2030-31	2031-32	2032-33	2033-34
Boerne North	1,000	867	922	933	1,016	1,046	1,081	1,051	1,045	1,110	1,195
Boerne South	1,200	913	1,017	1,054	1,201	1,304	1,342	1,330	1,310	1,391	1,486
Voss MS	1,200	765	790	753	790	792	831	827	811	847	886
TOTAL	3,400	2,545	2,729	2,740	3,007	3,142	3,254	3,208	3,166	3,348	3,567

Light Blue = exceeds 100% of capacity

Purple = exceeds 120% of capacity

Source: Adapted from Population and Survey Analysts, Demographic Update, Reduced Model, January 2025

HIGH SCHOOLS: REDUCED MODEL

	Capacity	Current	2025-26	2026-27	2027-28	2028-29	2029-30	2030-31	2031-32	2032-33	2033-34
Boerne HS	1,900	1,517	1,522	1,573	1,578	1,665	1,671	1,751	1,860	1,890	1,965
Champion HS	2,600	2,099	2,103	2,252	2,294	2,441	2,557	2,692	2,978	3,093	3,220
TOTAL	4,500	3,616	3,625	3,825	3,872	4,106	4,228	4,443	4,838	4,983	5,185

Light Blue = exceeds 100% of capacity

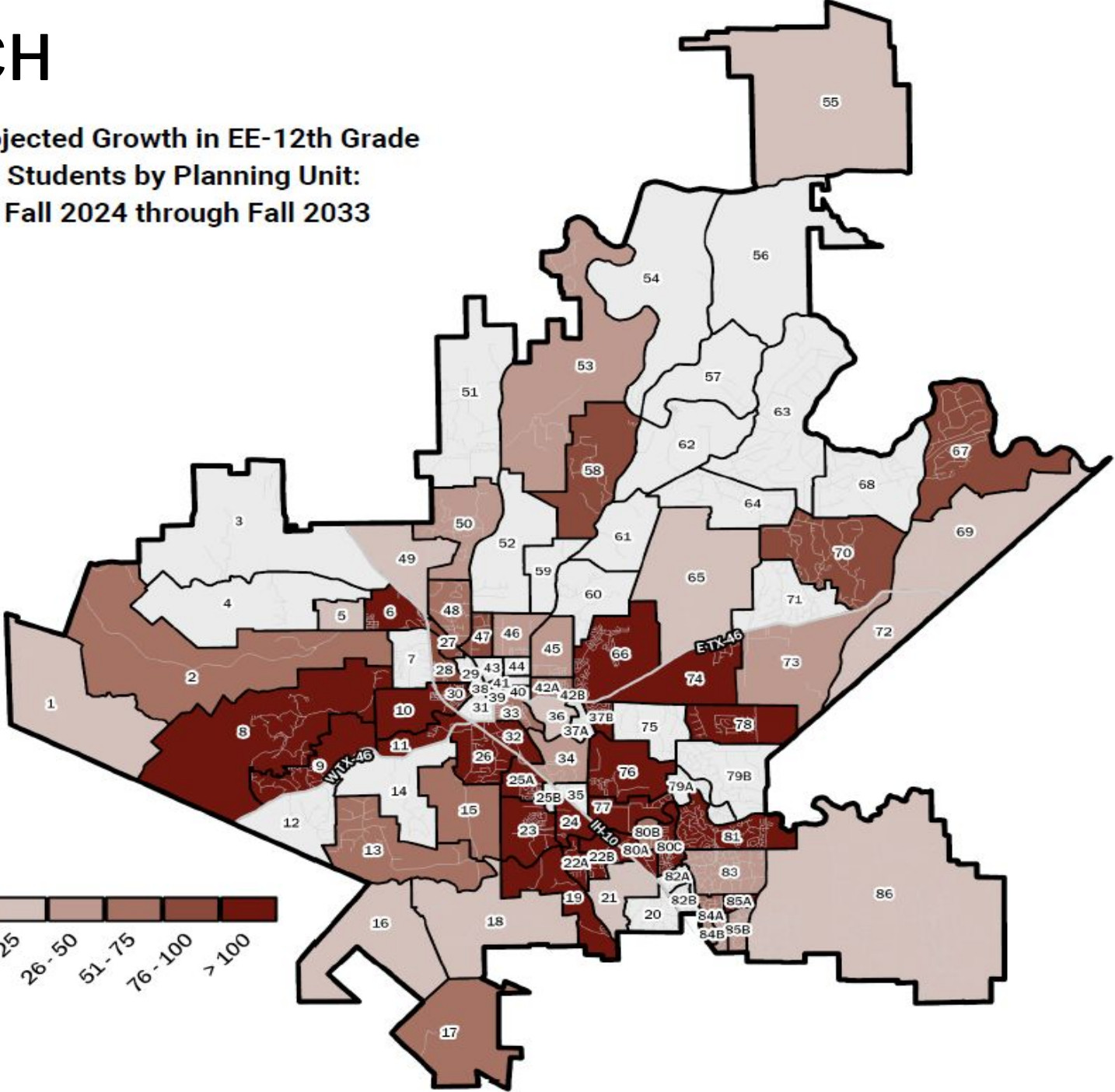
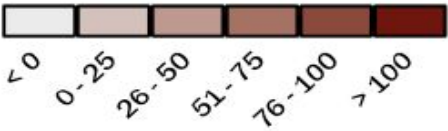
Purple = exceeds 120% of capacity

Source: Adapted from Population and Survey Analysts, Demographic Update, Reduced Model, January 2025

DEVELOPMENTS TO WATCH

Projected Growth in EE-12th Grade
Students by Planning Unit:
Fall 2024 through Fall 2033

- A. Shoreline Park (6)
- B. Highlands at Tapatio Springs (8)
- C. Miralomas (9)
- D. Bluff View MF (10)
- E. Birch at Spencer Ranch (11)
- F. Fox Falls (22A)
- G. Corley Farms (23)
- H. Regent Park (25A)
- I. Ranches at Creekside (37B)
- J. Esperanza (66)
- K. Lemon Creek MF (80A)



Tennis Court Lighting



BMSN Parking Lot



BISD Stadium



Mitchell Learning Center



Bond 2022

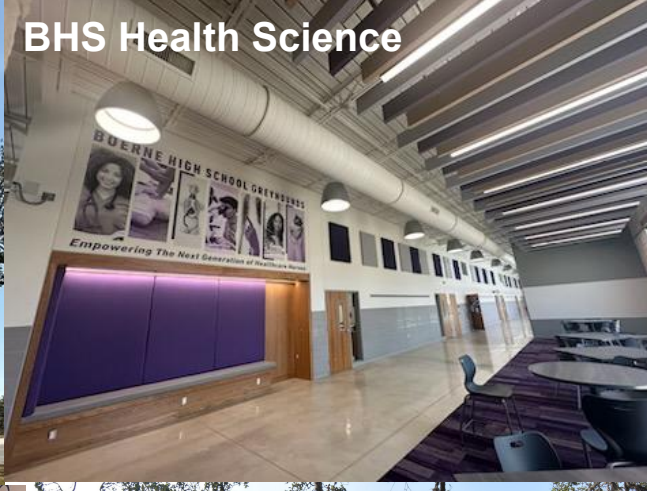
BHS Courtyard



CHS Classrooms



BHS Health Science



KES Library



CCES Library



FORES Library



Viola Wilson ES



CES Library

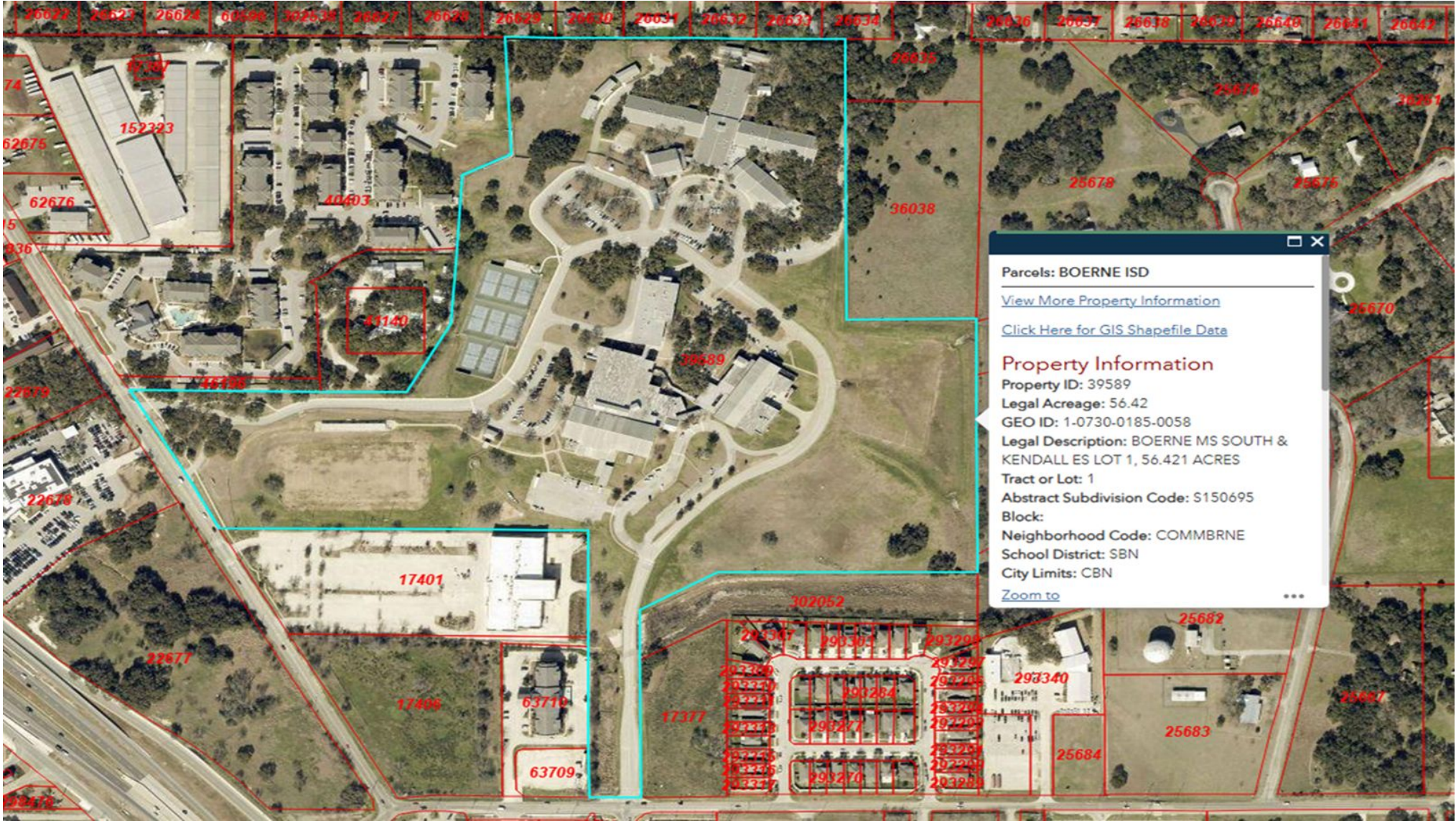


BMSN: 10.4 ACRES

Recommended
size for a middle
school site:
30-40 acres



KES
& BMSS:
56.421
ACRES



SFPFG Recommendations

April 2024

- 1) Given the site constraints of BMSN, consider building a new BMSN and convene a team to explore how to leverage the current BMSN facility to meet long-term educational needs of BISD
- 2) Establish a preferred student capacity for middle schools at 1,200 students
- 3) Explore the expansion of current district land portfolio to provide options for the growing needs
- 4) Convene a long-range planning committee to consider district needs and timing of projects (i.e., stadium).
- 5) Maximize existing facilities strategically to postpone the need for high school #3.

FPFG Recommendations

April 2025

- 1) In alignment with SFPFG, leverage the current BMSN facility as an advanced career/CTE center
- 2) Examine CTE programming
 - a) Study student interest data
 - b) Study workforce data and projections
 - c) Determine courses, levels to be offered at a CTE site vs. home campus
- 3) Convene local business partners and stakeholders to inform programming and industry needs
- 4) Conduct facility assessment of BMSN
- 5) In alignment with SFPFG, establish middle school capacity at 1,200 students.

Discussion