

Repurpose Boerne Middle School North as a CTE Center



PROJECT UPDATE

October 15, 2025



James Fauver, AIA
Senior Project Manager



Luis Ahumada
Director of K-12 San Antonio



Sheleah Reed
Director, PreK-12 Engagement & Partnerships



Melissa Turnbaugh, AIA
CTE Subject Matter Expert,
Firmwide PreK-12 Market Leader

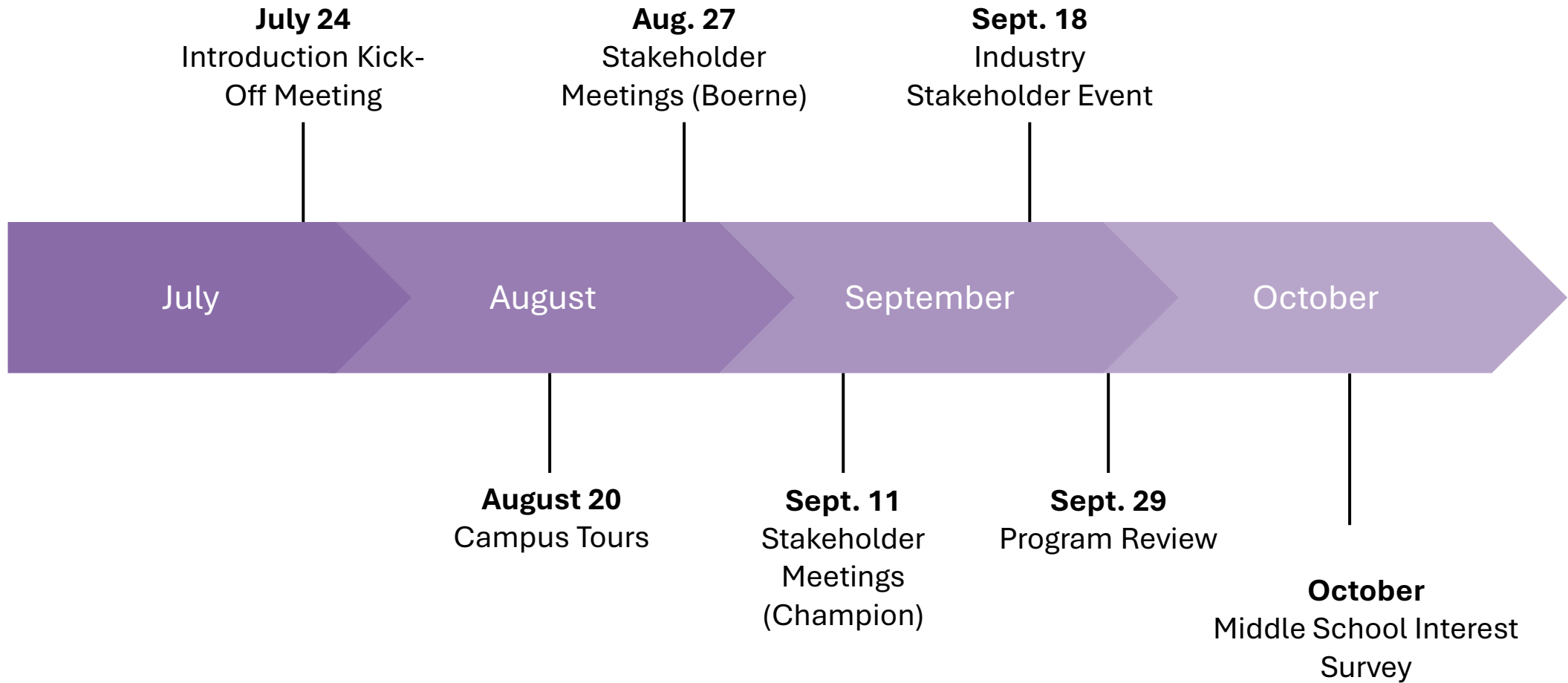
Daniel De La Garza
Design Director



Our Charge

To partner with Boerne ISD in reimagining Boerne Middle School North through a collaborative planning process that aligns enrollment and expansion needs with a forward-thinking vision for Career and Technical Education (CTE). Our goal is to create a facility that reflects community values, prepares students for future careers, and strengthens district growth through inclusive engagement, data-informed programming, and strategic conceptual planning.





* Monday afternoon weekly standing project meetings



Campus Tours

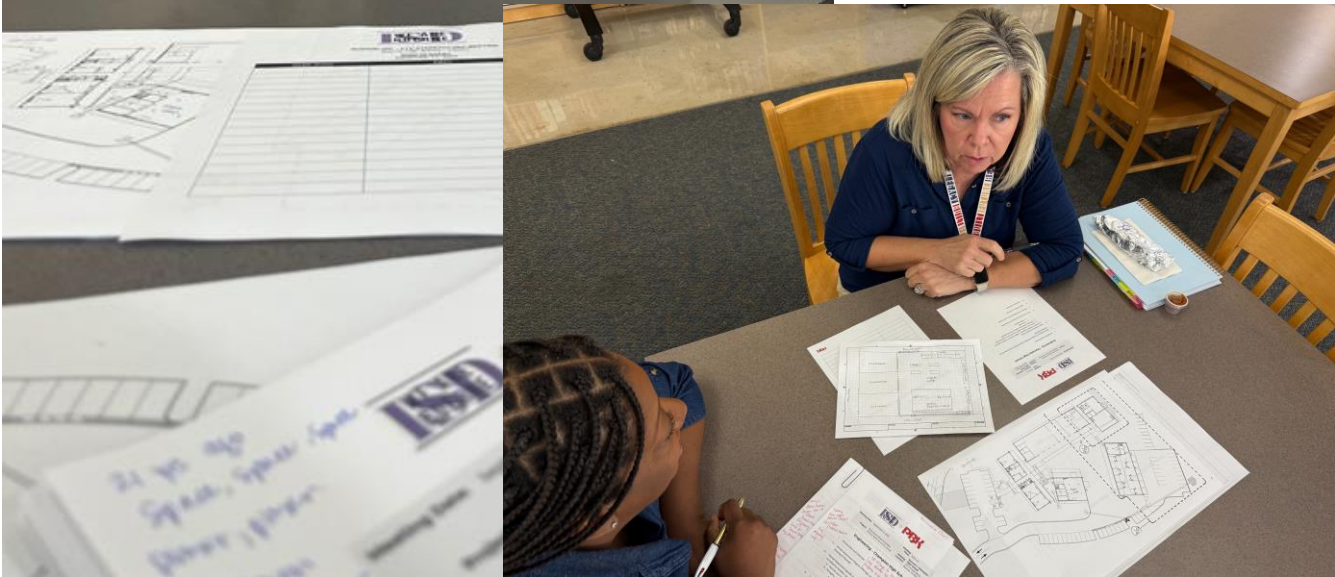


July

August

September

October



Health Science – Boerne High School

Part of the Public Service Pathway, Health Sciences PTECH

Students can receive Certified Clinical Medical Assistant Certification

Attendees:

- Selina Schubart
- Dr. Vanessa Smith
- Lisa Reeh

Program Overview

- Focus Area: Health Science
- Year 1: Planning phase
- Cohort Enrollment:
 - Cohort 1: 200 students
 - Cohort 2: 150 students
 - Cohort 3: Expected to grow
- All students receive CPR training

Certificates:

- EKG Tech (newest one)
- CBR2 (currently)
- Phlebotomy (want to add)
- Level 1 EMT (future)

Space & Capacity Challenges

- Building space was exceeded within one year of opening.
- At peak times, up to 25% of high school students were enrolled in classes.
- 216 students attend six classes, making group activities difficult.
- Business classes currently occupy space; unclear impact when additional classes are built out next year.
- Classroom spaces are not appropriate for current class sizes.
- No convening/planning space available for teachers.
- Classroom doors not wide enough. Hospital beds don't fit.
- Outdoor area used as flexible space:
 - Presents safety concerns
 - Becomes an unwanted student gathering area
 - Teachers are required to monitor both classroom and hallway

Teacher & Staff Needs

- Interest in a teacher workroom and lounge area
- No permanent teacher desk area with convenient access



CAN I ASK YOU A QUESTION?

What are the emerging trends in your industry?

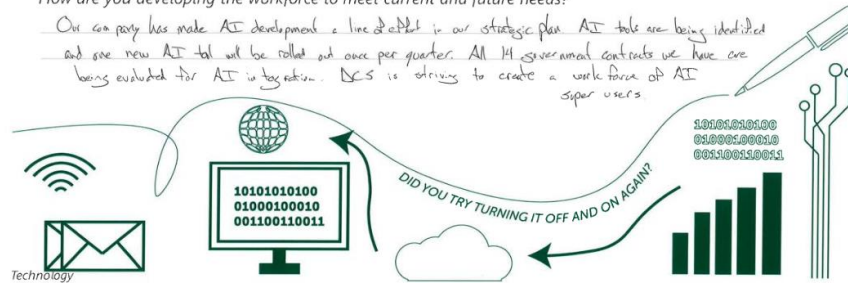
Artificial Intelligence and Machine Learning are being incorporated into almost every request for proposal for defense contracting. The government desires advanced analytics for most professional services contracts. Also experiencing 30% growth in cybersecurity field.

How do your facilities support the work of your organization?

We have a secure facility to ensure CMMC level II compliance.

How are you developing the workforce to meet current and future needs?

Our company has made AI development a line of effort in our strategic plan. AI tools are being identified and one new AI tool will be rolled out once per quarter. All 14 government contracts we have are being evaluated for AI integration. DCS is striving to create a work force of AI super users.



CAN I ASK YOU A QUESTION?

Calli McCormac
Strategy

What are the emerging trends in your industry?

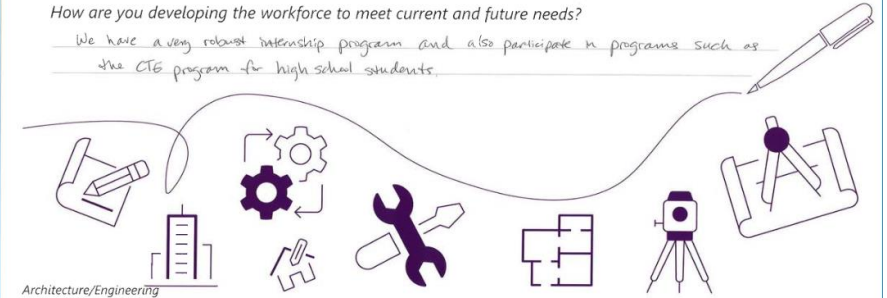
The emergence of AI is going to create a greater need for data centers and a way to power them.

How do your facilities support the work of your organization?

We have four offices in Texas that provide a space for collaboration, innovation, and culture building.

How are you developing the workforce to meet current and future needs?

We have a very robust internship program and also participate in programs such as the CTE program for high school students.



CAN I ASK YOU A QUESTION?

What are the emerging trends in your industry?

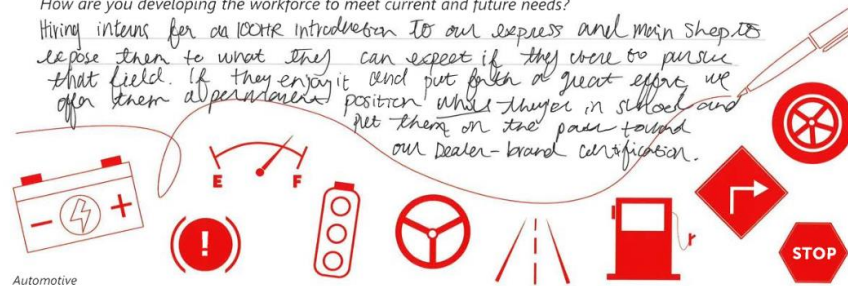
Mobile Services - Technicians can do tires, oil changes, brakes, etc. in someone's driveway so we're also looking for soft skills coupled w/ technical.

How do your facilities support the work of your organization?

Service is a HUGE stable source of revenue for our dealerships. It is how we retain customers and continue to have them come back and shop with us.

How are you developing the workforce to meet current and future needs?

Hiring interns for an ICEE introduction to our express and main shops expose them to what they can expect if they were to pursue that field. If they enjoy it and put forth a great effort, we offer them an advanced position while they're in school and net them on the path toward our Dealer-brand certification.



CAN I ASK YOU A QUESTION?

What are the emerging trends in your industry?

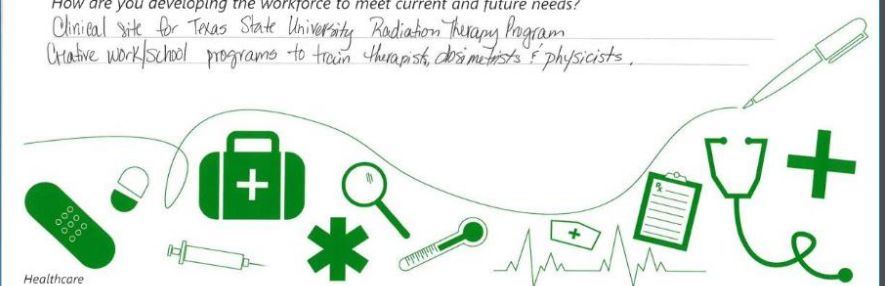
more complex treatment regimens, innovative applications, more use of AI.

How do your facilities support the work of your organization?

Treating cancer patients
Diagnostic imaging services

How are you developing the workforce to meet current and future needs?

Clinical site for Texas State University Radiation Therapy Program
Creative work/school programs to train therapists, dosimetrists & physicists.



Created a Building Program

CTE Program Review Boerne ISD Program of Spaces

MS - CTE CAMPUS

SPACE/FUNCTION	QUANTITY	NET UNIT	TOTAL NET	WORK SPACE REQUIREMENTS
----------------	----------	----------	-----------	-------------------------

Engineering	Qty	SF	Total	MS Campus
Dedicated Classroom Engineering	3	1,100	3,300	Large butcher block tables, overhead power
High-Intensity Lab Playfield	1	3,800	3,800	Playfield used for competitions
Maker Space Printing, equipment	1	1,000	1,000	Adjacent to lab with CNC, 3D printers
Storage Room Tools/Equip + Project + Materials	1	400	400	Secure Student Storage, Shelves for all materials
			8,500	NSF

Arts AV & Technology	Qty	SF	Total	
Dedicated Labs Computer Labs	2	1,200	2,400	Dual Monitor Computer Lab - 28 students
Storage Room Equipment	1	200	200	Secure Storage
High-Intensity Lab Broadcast / Digital Media Studio	1	2,500	2,500	Green Screen + Anchor Desk
Studio Control Room	1	450	450	View to Studio + Sound Rooms
Studio Sound Studio	1	300	300	Direct Access to Broadcast Studio
Studio Prop Storage	1	200	200	Direct Access to Broadcast Studio
Studio Equipment Storage	1	150	150	Direct Access to Broadcast Studio
Audio Room Soundproof Audio Room	2	100	200	Sound Proof Recording
			6,400	NSF

First Responders - EMT & Fire Science	Qty	SF	Total	
Dedicated Classroom Emergency Medical Technician	1	800	800	Oversized Classroom
Dedicated Lab Emergency Medical Technician	1	1,200	1,200	Simulation ambulance
Storage Room Equipment	1	200	200	Secure Storage
Dedicated Classroom Fire Science	1	800	800	Oversized Classroom, could be shared with EMT
Dedicated Lab Fire Science	1	1,200	1,200	Demonstrations and drills
Outdoor Practice Area			TBD	Drills, simulations
Office Instructor	1	200	200	Provide Clear View into Lab
Storage Room Equipment	1	200	200	Secure Storage
Lockers Open Locker Area	1	150	150	Double Tier Lockers, Could be combined with RR.
Toilet Room Restroom & Shower	2	200	400	Restroom + Changing

Care & Share moves from Central Office

Aviation (Transportation)	Qty	SF	Total	
Dedicated Classroom Aviation	1	800	800	Oversized Classroom
Dedicated Lab Aviation	1	1,200	1,200	Building as well as simulation
Storage Room Equipment	1	200	200	Secure Storage
Outdoor Practice Area			TBD	Drone course
			2,200	NSF

CTE Program Review Boerne ISD Program of Spaces

MS - CTE CAMPUS

SPACE/FUNCTION	QUANTITY	NET UNIT	TOTAL NET	WORK SPACE REQUIREMENTS
----------------	----------	----------	-----------	-------------------------

CULINARY ARTS	Qty	SF	Total	Proposed relocation to MS
Enterprise Bistro Indoor Seating	1	1,800	1,800	Bistro - Full Serve: 15 - 18 SF / Occ
Enterprise Table + Chair Storage	1	400	400	Optional
Enterprise Bistro Prep / Serving	1	300	300	Approx. 13ft x 25ft
Enterprise Toilet 1	1	200	200	Approx. 10ft x 20ft
Enterprise Bistro Outdoor Seating			TBD	Optional Outdoor Space
Catering Fine Dining Storage (Event Linens + Dishware)	1	300	300	Optional (Approx. 20ft x 17.5ft)
Dedicated Classroom Culinary Arts Classroom	3	800	2,400	One classroom for growth
Dedicated Classroom Introduction kitchen	1	1,200	1,200	
Commercial-Grade Kitchen (Food Prep Lab Culinary Lab)	3	1,600	4,800	One classroom for growth
Warewash	1	250	250	Approx. 12.75ft x 19.5ft
Cooler / Freezer	2	250	500	Approx. 12.75ft x 19.5ft each
Dry Storage	1	350	350	1 Lg Rm <or> 2 Rms at 200 SF
Custodial Closet	1	100	100	Dedicated
Laundry	1	100	100	Commercial Washers + Dryers
Office Kitchen Manager Office	1	200	200	Approx. 12.5ft x 16ft
Lockers / Changing Staff Locker / Changing Area	1	200	200	
Lockers Student Locker Area	1	240	240	Optional
Changing Student Changing Stall	1	60	60	Optional
Receiving + Holding	1	300	300	
Storage General	1	100	100	
			13,800	NSF

Air Force JROTC	Qty	SF	Total	
Dedicated Classroom AF JROTC	2	800	1,600	Typical Classroom
High-Intensity Lab Pellet Range + Drill / Assembly Area	1	1,800	1,800	Wall Treatment for Pellets, Outdoor access
Storage Room Arms Storage	1	100	100	Secure Room, 2 Gun Safes
Storage Room General Storage	1	170	170	Secure Storage
Outdoor Practice Area			TBD	50x50 outdoor training space/field
Office Instructor	1	200	200	Provide Clear View into Lab
Meeting Room	1	300	300	
Storage Room Uniform	1	300	300	Secure Storage, hanging rods for uniforms
Lockers Open Locker Area	1	150	150	Double Tier Lockers, Could be combined with RR.
Toilet Room Restroom & Shower	2	200	400	Restroom + Changing
			5,020	NSF

Future Program Labs	Qty	SF	Total	
Dedicated Classroom Future	3	800	2,400	Typical Classroom
High-Intensity Lab Future	2	1,800	3,600	Wall Treatment for Pellets, Outdoor access
Storage Room General Storage	3	170	510	Secure Storage
			6,510	NSF

Created a Building Program

Recommendations

- Programs with large enrollment stay at home campuses
 - Health Science
 - Agriculture
- Intensive programs with growing interest move to MSN
 - Engineering
 - Culinary
 - AACTV
 - JROTC
- Existing smaller programs backfill space at home campuses
 - Entrepreneurship
 - Education - Future Teachers
- Establishment of new programs
 - First Responders – EMT & Fire Science
 - Aviation
 - Construction Science (Champion)

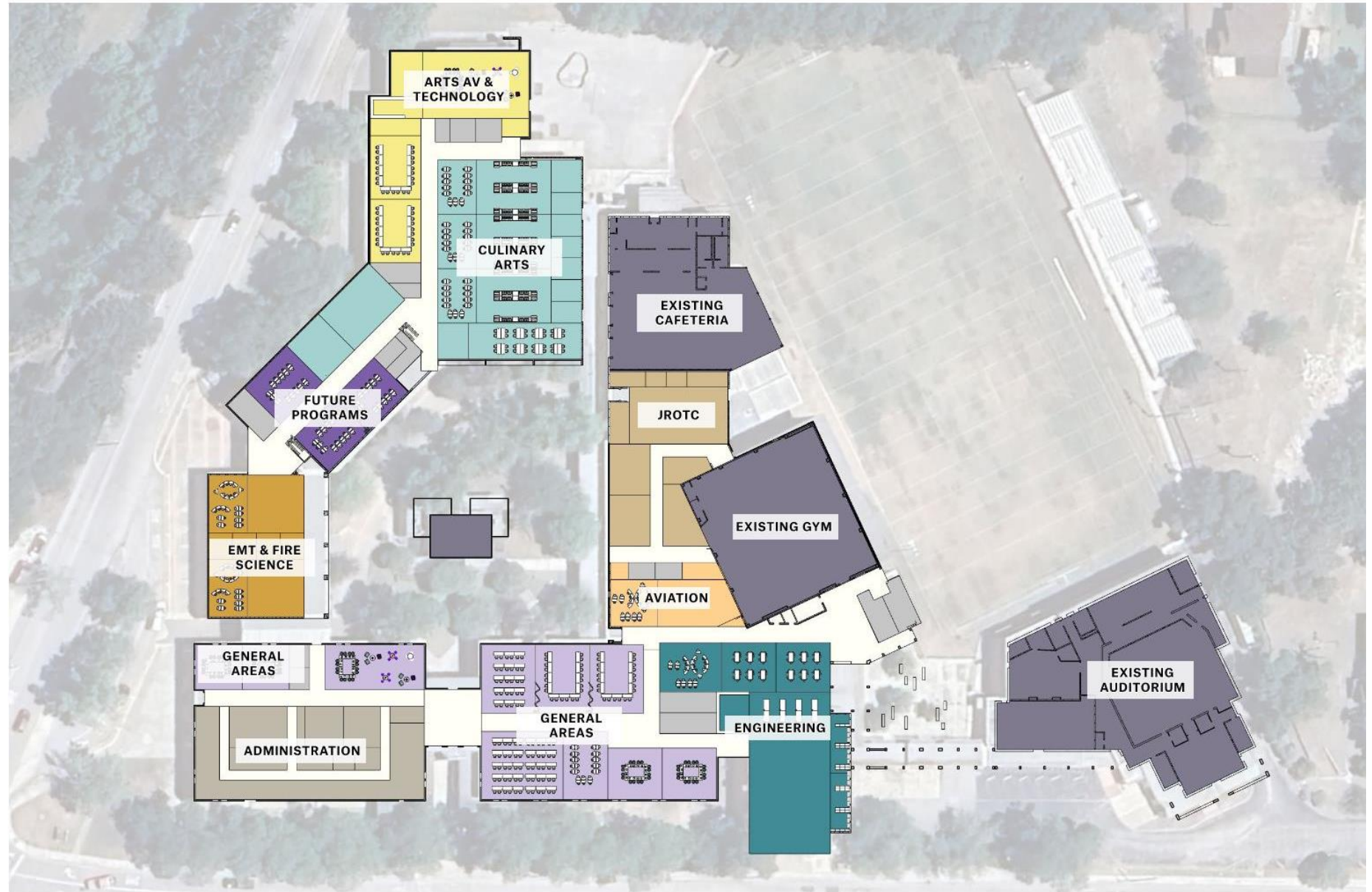




BOERNE MIDDLE SCHOOL NORTH RENOVATION

LEGEND

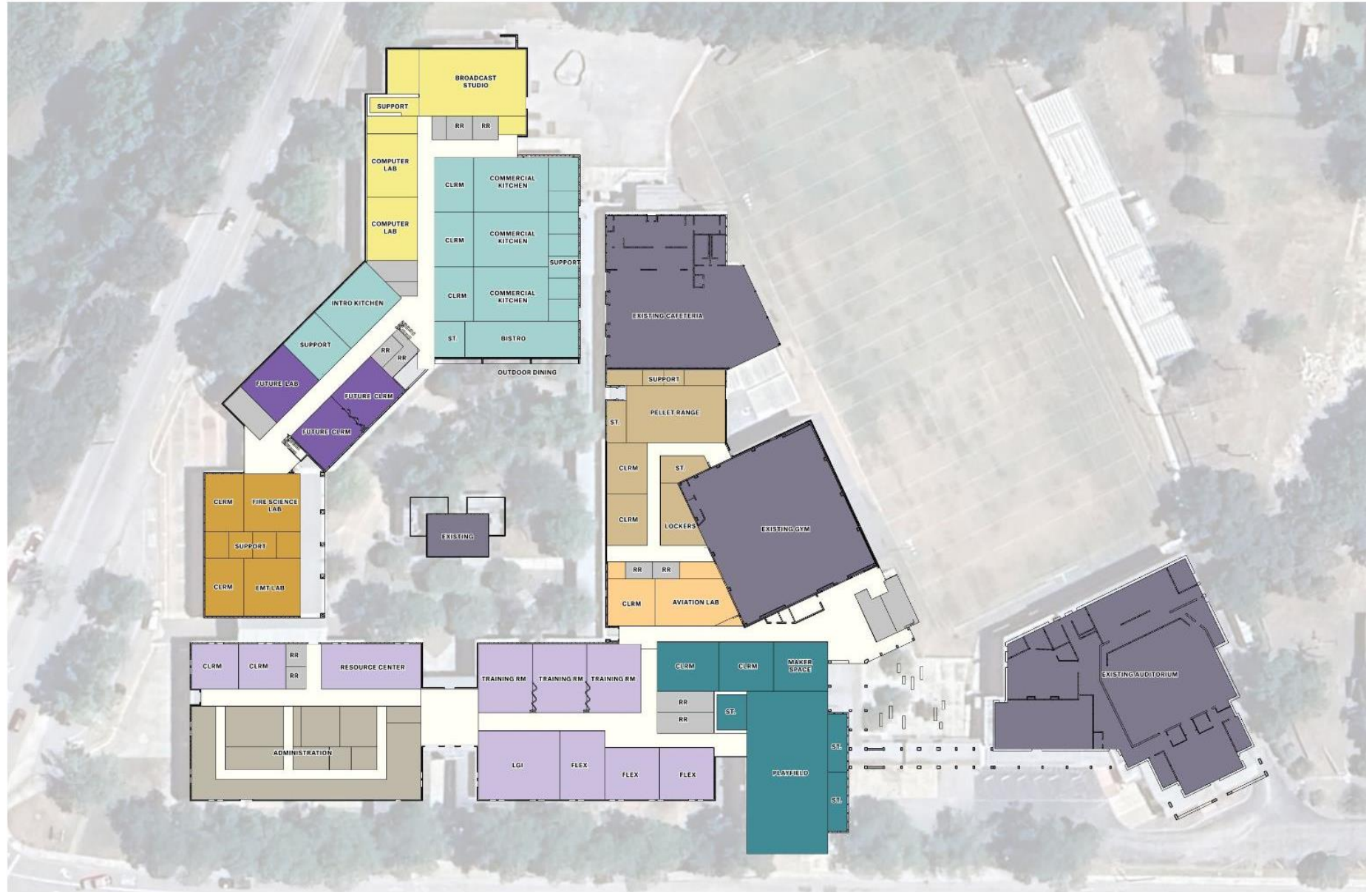
- ADMIN
- GENERAL AREAS
- EMT & FIRE SCIENCE
- AVIATION
- ENGINEERING
- AIR FORCE JROTC
- CULINARY ARTS
- ARTS AV & TECHNOLOGY
- FUTURE PROGRAMS
- EXISTING TO REMAIN



BOERNE MIDDLE SCHOOL NORTH RENOVATION

LEGEND

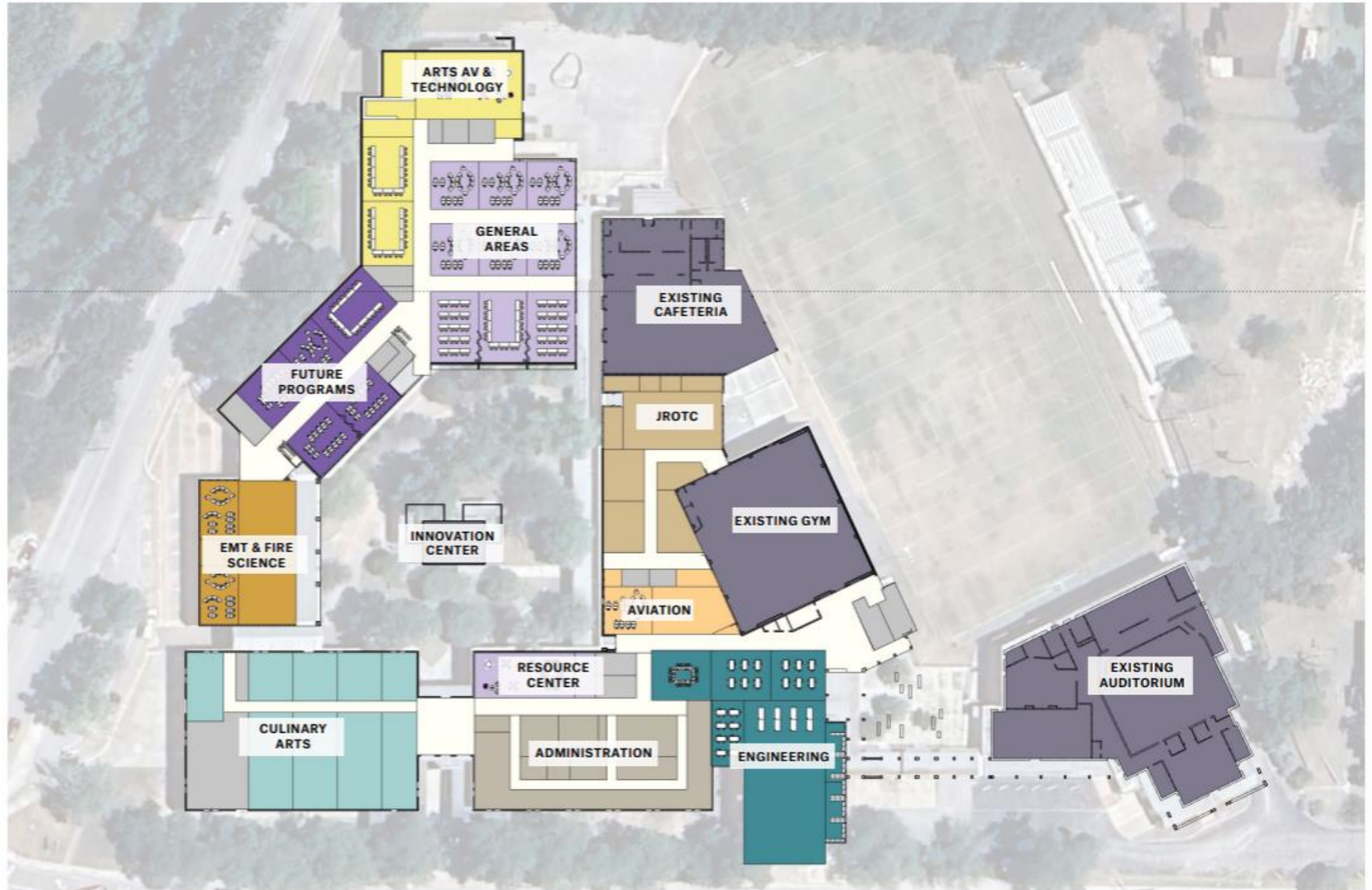
- ADMIN
- GENERAL AREAS
- EMT & FIRE SCIENCE
- AVIATION
- ENGINEERING
- AIR FORCE JROTC
- CULINARY ARTS
- ARTS AV & TECHNOLOGY
- FUTURE PROGRAMS
- EXISTING TO REMAIN



BOERNE MIDDLE SCHOOL NORTH RENOVATION

LEGEND

-  ADMIN
-  GENERAL AREAS
-  EMT & FIRE SCIENCE
-  AVIATION
-  ENGINEERING
-  AIR FORCE JROTC
-  CULINARY ARTS
-  ARTS AV & TECHNOLOGY
-  FUTURE PROGRAMS
-  EXISTING TO REMAIN



BOERNE MIDDLE SCHOOL NORTH RENOVATION

LEGEND

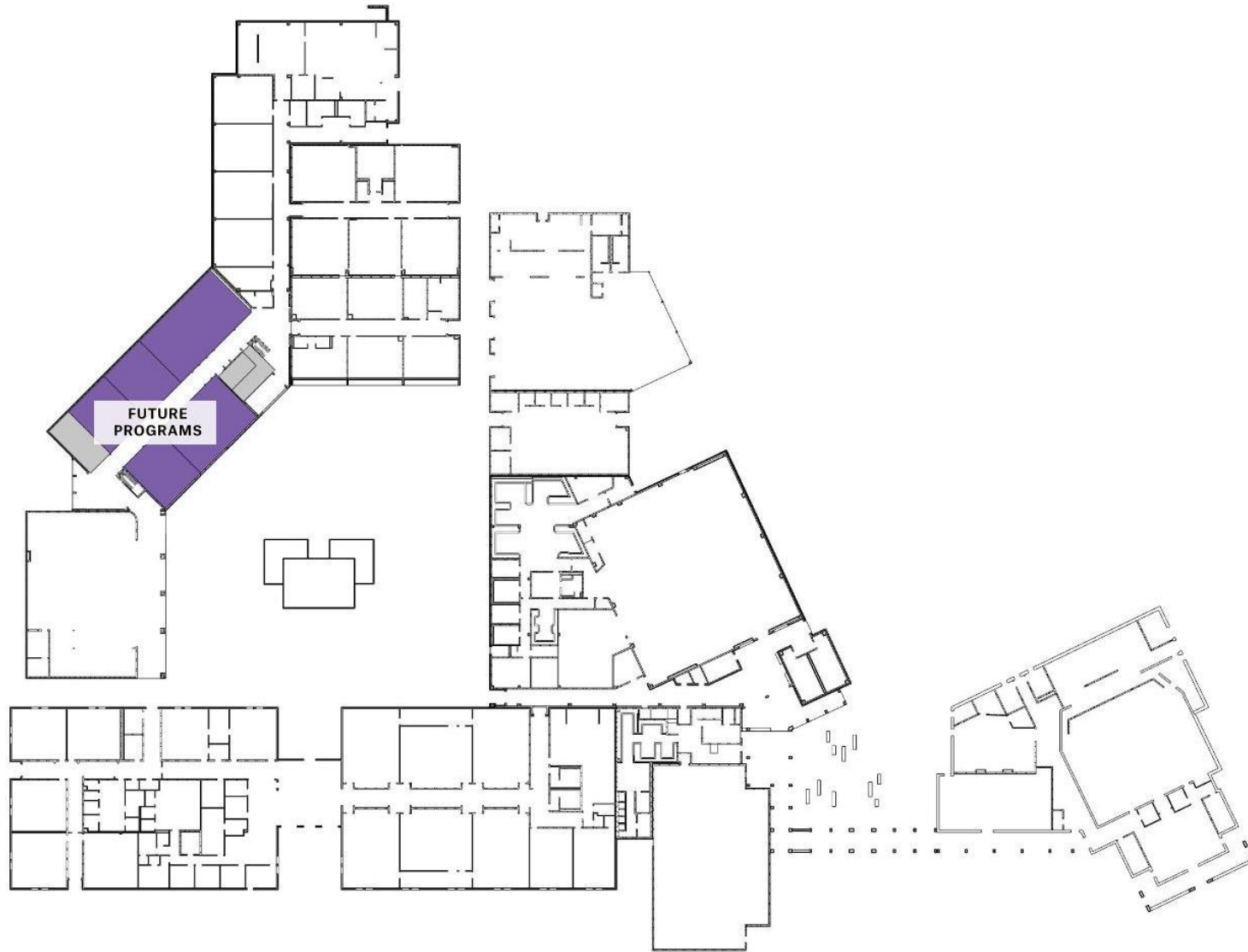
- ADMIN
- GENERAL AREAS
- EMT & FIRE SCIENCE
- AVIATION
- ENGINEERING
- AIR FORCE JROTC
- CULINARY ARTS
- ARTS AV & TECHNOLOGY
- FUTURE PROGRAMS
- EXISTING TO REMAIN



BOERNE MIDDLE SCHOOL NORTH RENOVATION

LEGEND

 FUTURE PROGRAMS



BOERNE MIDDLE SCHOOL NORTH RENOVATION

LEGEND

 FUTURE PROGRAMS



BOERNE MIDDLE SCHOOL NORTH RENOVATION

ENLARGED FIRST FLOOR PLAN

LEGEND

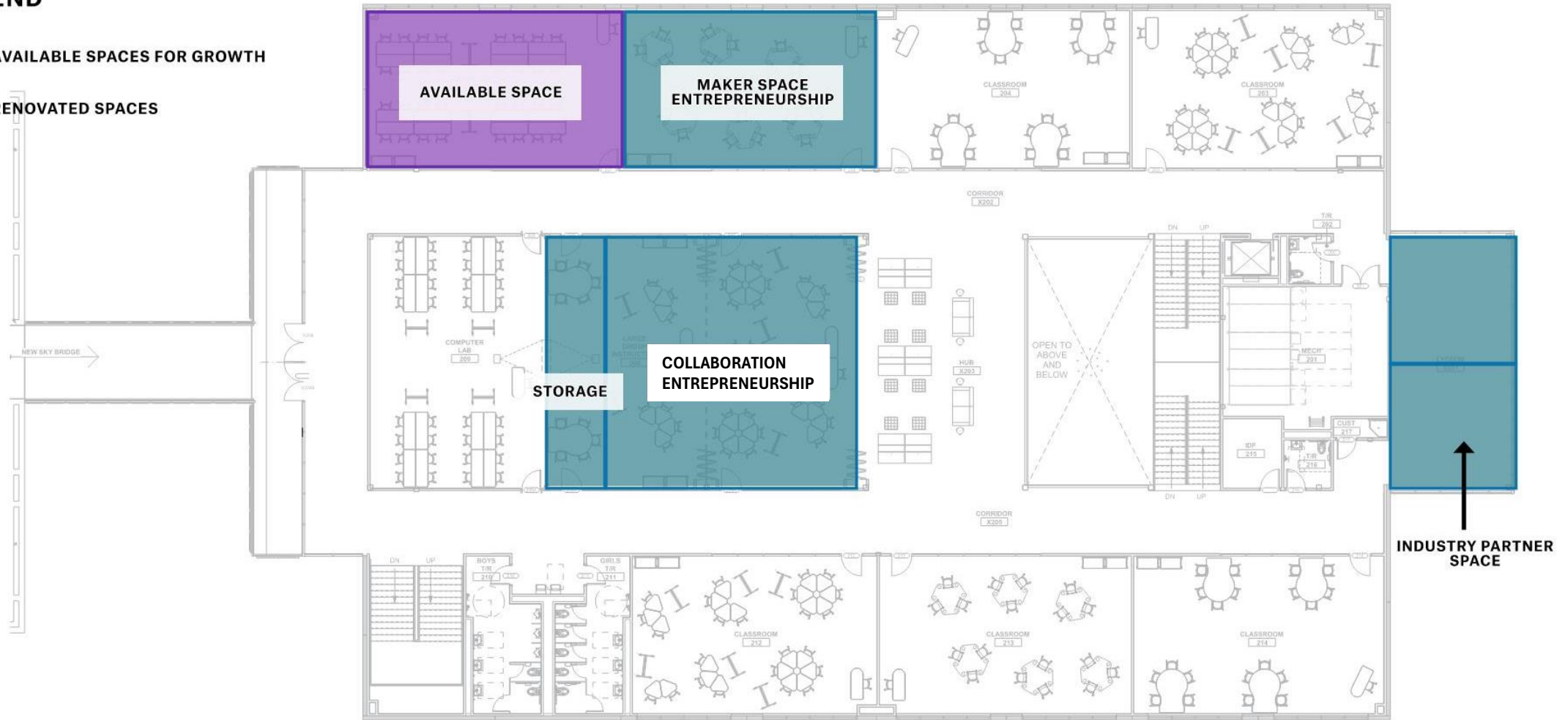
- AVAILABLE SPACES FOR GROWTH
- RENOVATED SPACES



CHAMPION HIGH SCHOOL CONCEPT SCOPE

LEGEND

-  AVAILABLE SPACES FOR GROWTH
-  RENOVATED SPACES

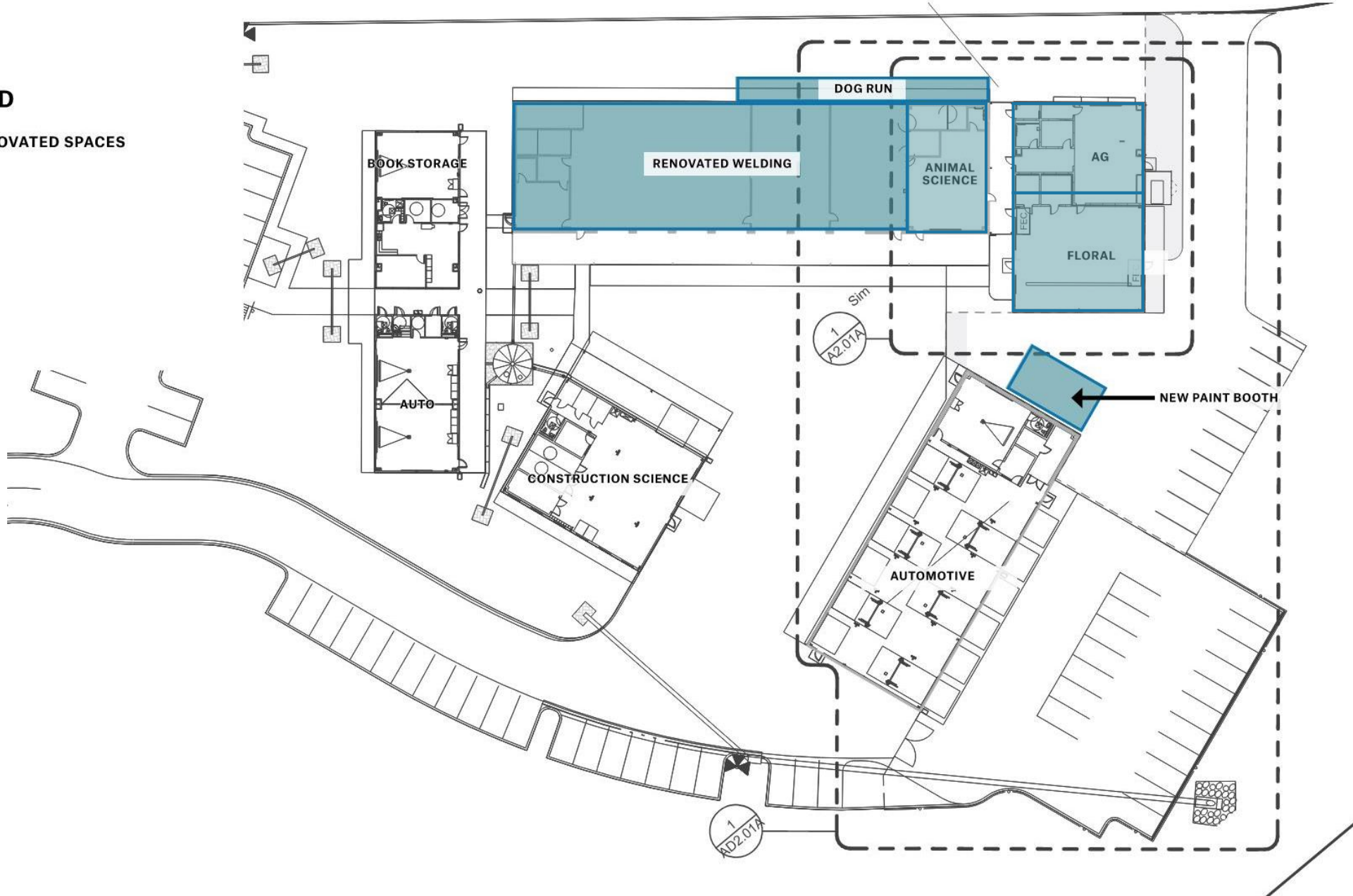


CHAMPION HIGH SCHOOL CONCEPT SCOPE

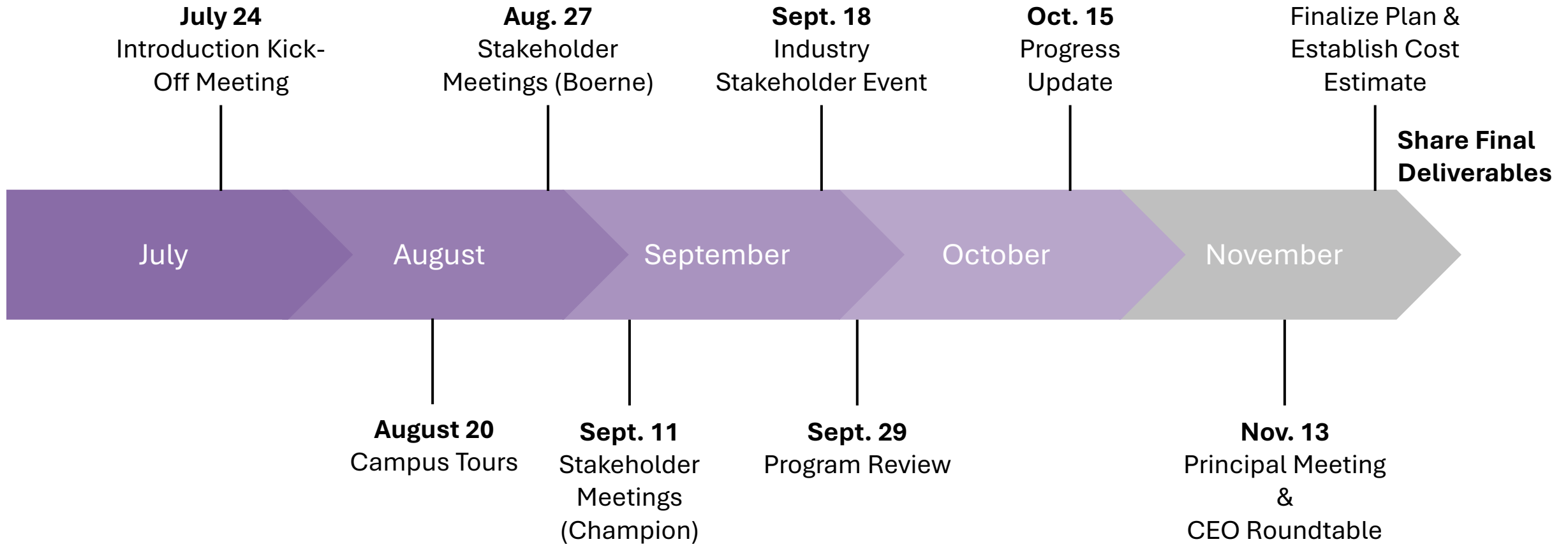
ENLARGED FIRST FLOOR PLAN: THE RANCH

LEGEND

 RENOVATED SPACES



CHAMPION HIGH SCHOOL CONCEPT SCOPE



* Monday afternoon weekly standing project meetings





THANKS!

