

May 17, 2026

# Cockrell Connection

Be sure to follow us on facebook and instagram



### SCHOOL HOURS

Grades PK-4.....7:55-3:15 PM  
 Front Doors Open.....7:15 AM  
 Breakfast Served.....7:15-7:50 AM  
 Students Enter Class.....7:45 AM  
 Class Begins.....7:55 AM



## Medication in the Clinic?

Please make sure you arrange to pick up your students medications before the last day of school.

\*Students must be inside the building by 7:55 AM. Students entering the building after this time will be tardy. If a student is tardy, parents are required to park and come in the lobby to sign them in.

## Return all Library Books

FEE STATEMENTS HAVE BEEN SENT FOR ALL OVERDUE BOOKS. IF YOUR CHILD HAS LOST A BOOK PLEASE SEND PAYMENT TO MS. HAUSER.

### IMPORTANT LINKS:

[Cockrell Elementary Contact List](#)

[MAY MENU](#)

[DISTRICT CALENDAR](#)

[DRESS CODE](#)

[STAFF AFFIRMATIONS](#)

[SCHOOL SUPPLY LISTS](#)

[ABSENCE REPORTING](#)

[CAMPUS PFE POLICY](#)

[DISTRICT PFE POLICY](#)

## MOVING?

GIVE US A CALL TO UPDATE YOUR RECORDS



## Upcoming Dates:

05/18 SENIOR WALK 2PM  
 05/18 NATIONAL SPEECH PATHOLOGIST DAY  
 05/19 PRE-K - 3<sup>RD</sup> GRADE AWARDS  
 05/20 4<sup>TH</sup> GRADE AWARDS  
 05/21 EARLY RELEASE

AUGUST 2026  
 08/18 SUPPLY DROP OFF / KINDER ORIENTATION  
 08/18 POPICLES WITH PRINCIPALS  
 08/19 FIRST DAY OF SCHOOL  
 08/27 MEET THE TEACHER NIGHT

## Awards Schedule



See flyer below for details



# 26-27 SCHOOL SUPPLIES FLYER BELOW



# COCKRELL

## Awards

 **TUESDAY MAY 19, 2026**

**1ST GRADE**

**9:30-10:00**

**PEARS**

**10:10-10:40**

**PRE-K**

**11:00-11:30**

**3RD GRADE**

**11:45-12:15**

**KINDER**

**12:10-12:40**

**2<sup>ND</sup> GRADE**

**1:15-1:45**

 **WEDNESDAY MAY 20, 2026**

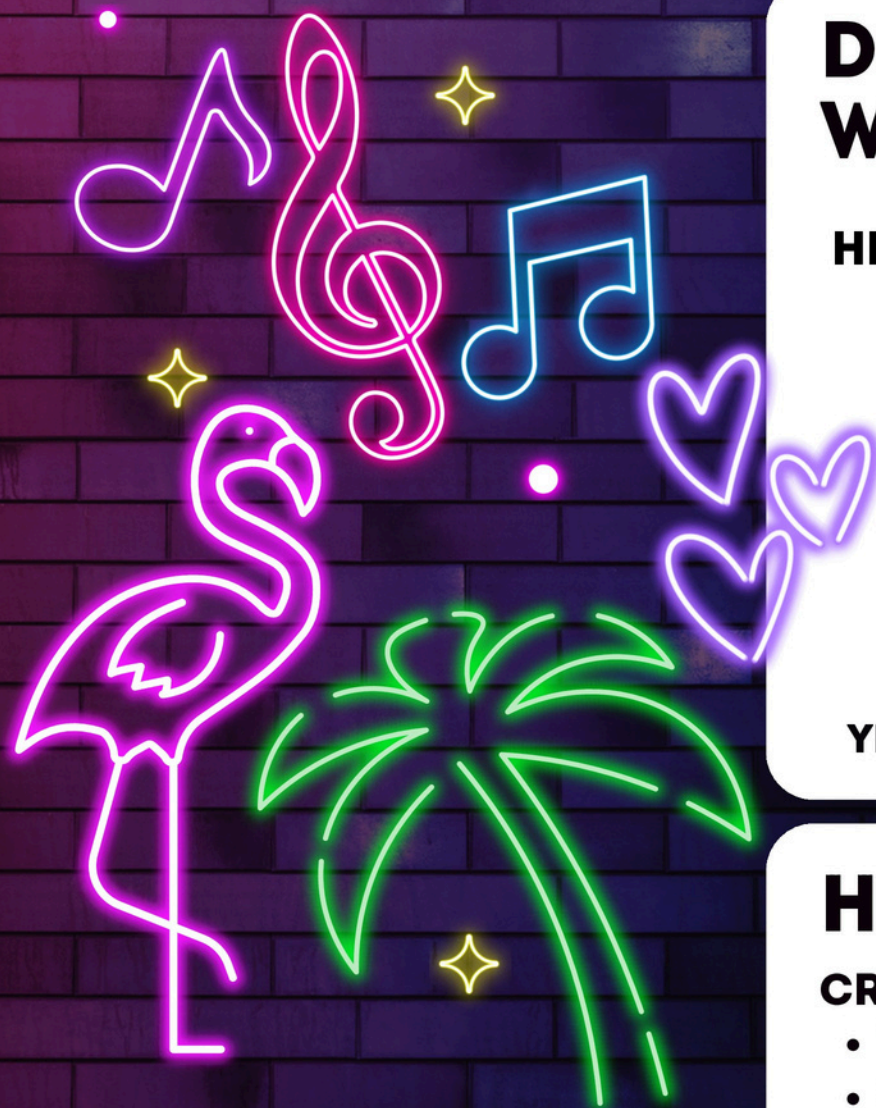
**4<sup>TH</sup> GRADE**

**8:30AM**

**DUE TO CAPACITY LIMITATIONS WE ASK THAT YOU LIMIT VISITORS TO 2 PER STUDENT. NO STROLLERS OR SIBLINGS. THERE WILL BE NO LUNCH VISITORS ON THIS DAY.**

**[CLICK HERE FOR FAST PASS](#)**

# DID YOU FORGET TO ORDER THE YEARBOOK?



**YOU PAY**

**\$35 +**

**SHIPPING**

**QUESTIONS?**

**YEARBOOK@COCKRELLPTO.ORG**

## DON'T WORRY WE'VE GOT YOU!

### HERE'S THE DETAILS:

- if you order between now and May 8th, your yearbook will be shipped to the school
- if ordered after May 8th, it will be shipped to your home address
- estimated delivery is 1 to 2 weeks

**QUESTIONS?**

**YEARBOOK@COCKRELLPTO.ORG**

## HOW DO I ORDER?

### CREATE A TREERING ACCOUNT

- Treering is our new Yearbook Publisher
- Scan the QR code
- OR sign up through the app



**SCHOOL CODE:**  
1017180435771454

## PRE-K & KINDERGARTEN

### WHAT DOES MY CHILD NEED TO KNOW TO BE SUCCESSFUL IN SCHOOL

#### INDEPENDENCE SKILLS

- Use the restroom independently (including washing hands)
- Unbutton and button pants alone
- Open food containers and packages
- Put on and take off backpack, shoes, and jacket
- Pack up the backpack

#### SOCIAL SKILLS

- Follow simple directions
- Take turns and share with others
- Use words to express needs and feelings

#### FINE MOTOR SKILLS

- Hold a pencil, crayon, or marker correctly
- Cut with scissors
- Use glue sticks and build with small objects (Legos, puzzles, etc.)

#### LANGUAGE & LITERACY

- Recognize their name and attempt to write it
- **Recognize their name when someone says it and say their own name when asked**
- Identify some letters and their sounds
- Listen to and talk about stories

#### MATH READINESS

- Count to 10 and recognize some numbers
- Identify basic shapes and colors
- Sort and match objects by size, shape, or color

### LUNCH & SNACKS

Practice opening food containers and eating independently. School lunch is available, or you may send a packed lunch. **Students will eat in the cafeteria with a large group of other students and should practice sitting for 30 minutes while eating.**

#### WHAT TO BRING ON THE FIRST DAY

- Backpack (regular size, no wheels)
- Extra set of clothes (labeled in a ziplock bag)
- Refillable water bottle
- Nap mat (for Pre-K)

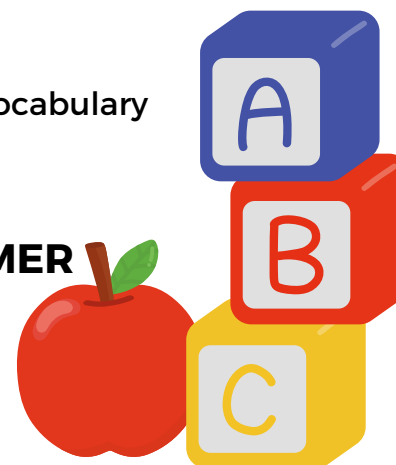
### SCHOOL ROUTINE

Help your child get used to a daily schedule with consistent bedtimes and wake-up times.

### READ EVERYDAY

Reading with your child daily builds vocabulary and a love of learning.

**PLEASE PRACTICE THESE SKILLS OVER THE SUMMER SO THAT YOUR CHILD IS READY FOR SCHOOL!**



**PK & KINDER**  
2026-27  
**ENROLLMENT**  
**OPENS MARCH 30TH!**

**JOIN OUR** *Family!* **PEARLAND ISD**

**BUILD PEARLAND Proud.**

**Pearland ISD Job Fair!**

Join us on **Saturday, April 25, from 8:30-10:30 a.m. at Pearland High School - Searcy side** (located at 3775 South Main St) and learn about positions available at Pearland ISD.

Applicants will have the opportunity to talk to the hiring campuses and departments, fill out applications online (laptops will be available) and have onsite interviews.

Child care will be available for applicants with children (5-12 years old).

**Positions Available:**

- Teachers and classroom aides (at all campuses)
- Special Programs department
- Multilingual Programs
- Career and Technical Education
- Advanced Academics

**Join Our Team:**  
Learn more about positions currently available\* at:  
[www.pearlandisd.org/employment](http://www.pearlandisd.org/employment)

\*Positions available might change daily.

# Are you moving over the summer?

Please contact our  
Receptionist Genesis Govea  
so that we can update your  
records





Save Time & Money on School Supply Shopping

Exact pack items & brands customized to your school lists.

# BARBARA COCKRELL ELEMENTARY

Save Over 40% on Supplies Compared to Other Online Retailers

Grade Level 2026-2027	Cost
Pre-K	\$61
K	\$61
1st	\$61
2nd	\$61
3rd	\$61
4th	\$61

Order Securely Online  
Until May 19th

[www.educationalproducts.com/shoppacks](http://www.educationalproducts.com/shoppacks)

Enter the school ID

**COC005**

(3 letters /3 numbers)

Packs will be in your child's classroom  
the first day of school.

Sales tax will be applied at checkout

For questions, please contact:

Samantha Vela- [secretary@cockrellpto.org](mailto:secretary@cockrellpto.org)

832-736-6600;

Cristen Kirksey- [president@cockrellpto.org](mailto:president@cockrellpto.org)

832-736-6600



Scan QR code  
and  
Order Today!

*Join us for the*  
**PEARLAND LADY OILER  
BASKETBALLCAMP**

| 8:30-11:30AM SESSION II(6TH-9TH GRADE)

JUNE 15-17 | 8:30 AM-10:00 AM SESSION I (4YRS OLD-5TH GRADE)



**JOIN US FOR FUNDAMENTAL SKILLS AND  
POSITION WORK TO ELEVATE YOUR GAME!  
EACH CAMPER WILL RECIEVE A T-SHIRT**

**JUNE 15- JUNE 17**

Questions Contact Coach Adams  
adamsje@pearlandisd.org

**BRING YOUR OWN  
SHOES & WATER  
BOTTLE**

**SEARCY GYM- PEARLAND HIGH SCHOOL**



**SCAN ME TO  
SIGN UP**

