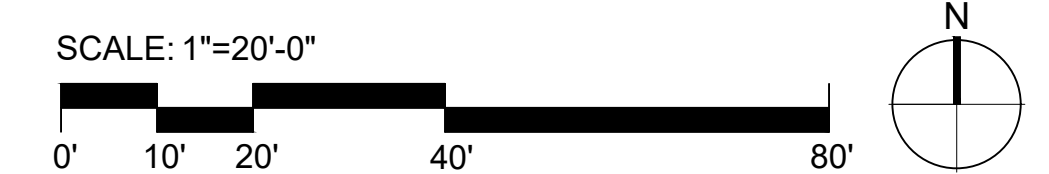
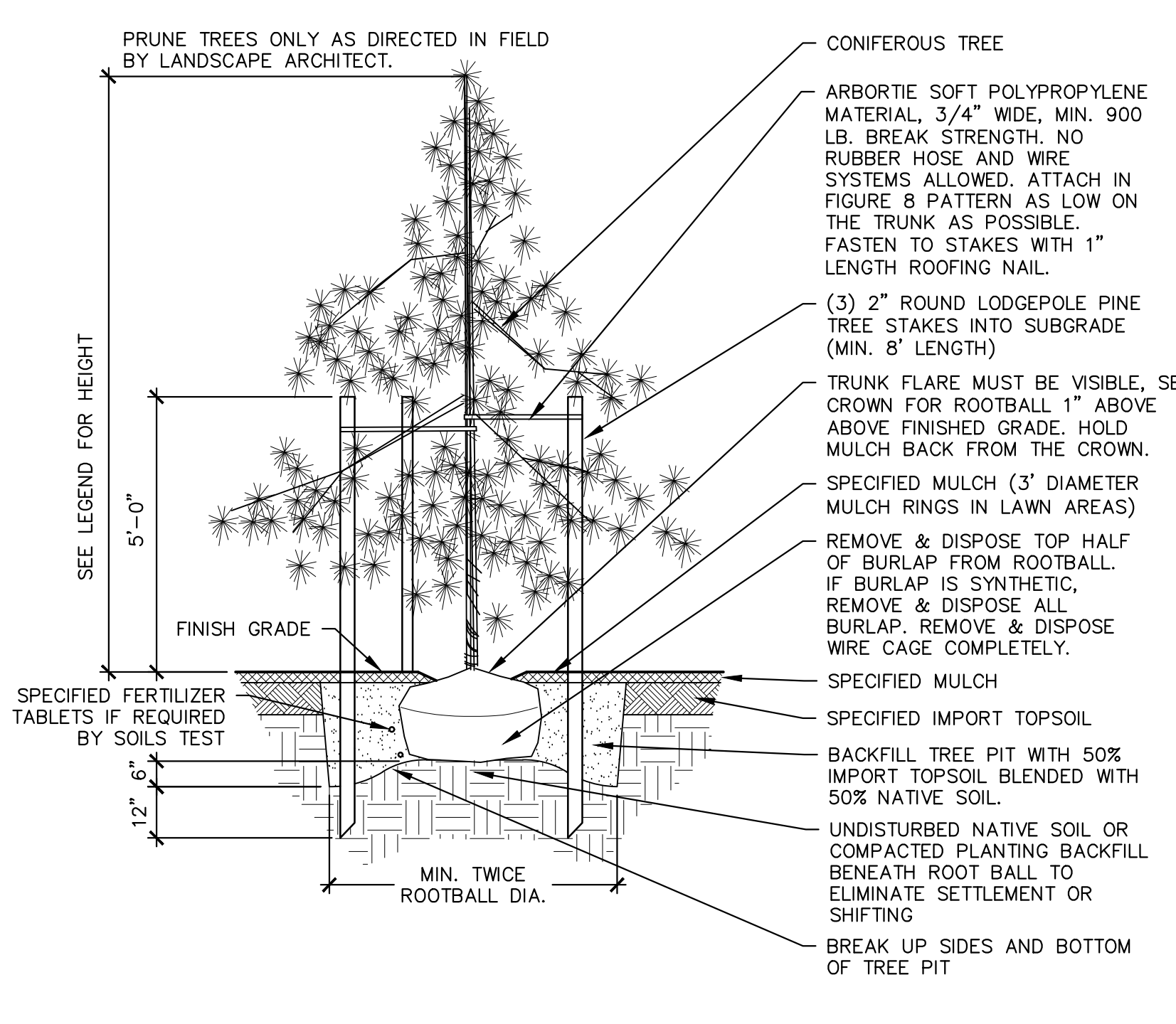


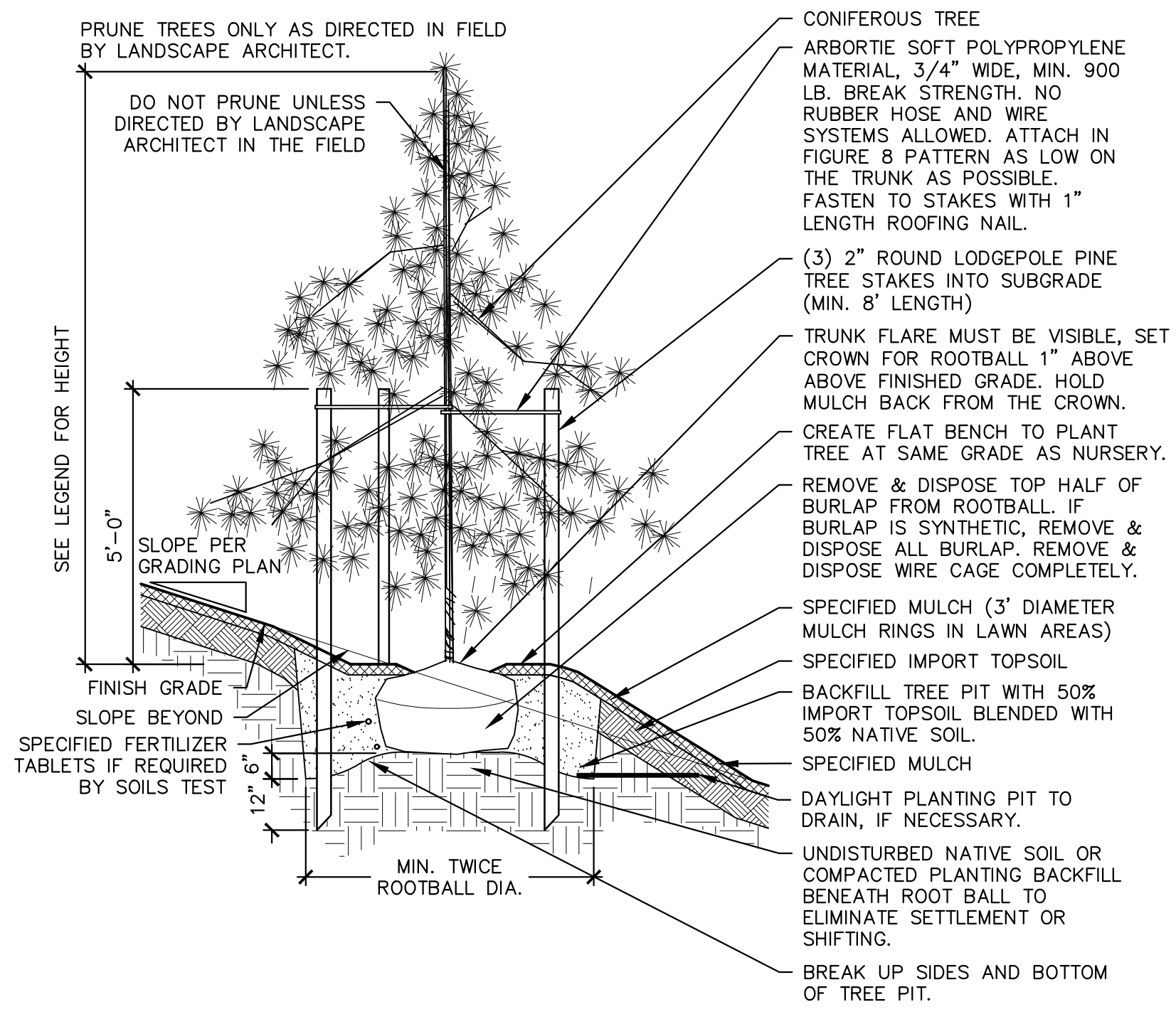
NO.	DATE	DESCRIPTION



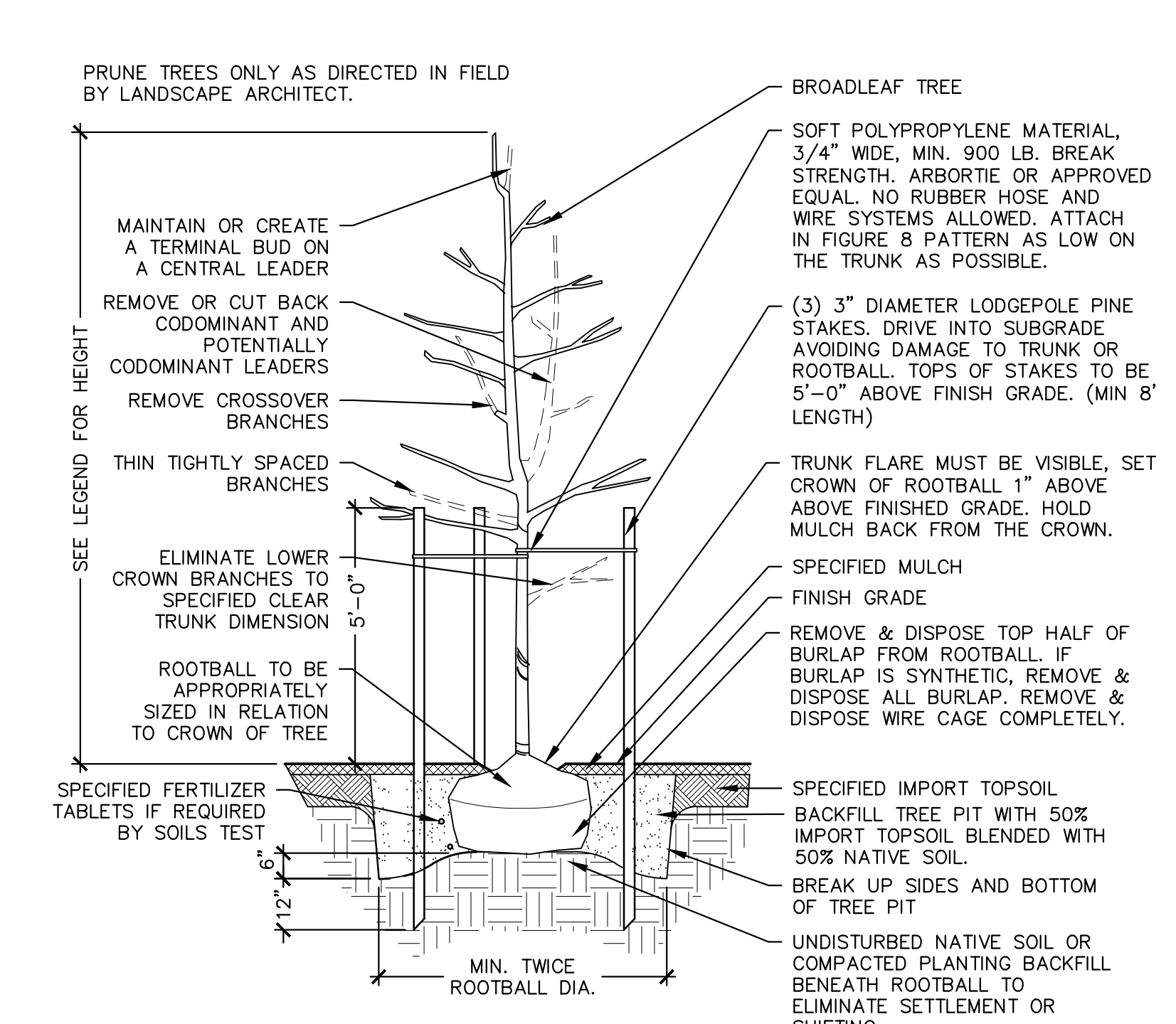
IF SHEET MEASURES LESS THAN 30"X42", IT IS A REDUCED PRINT. REDUCE SCALE ACCORDINGLY



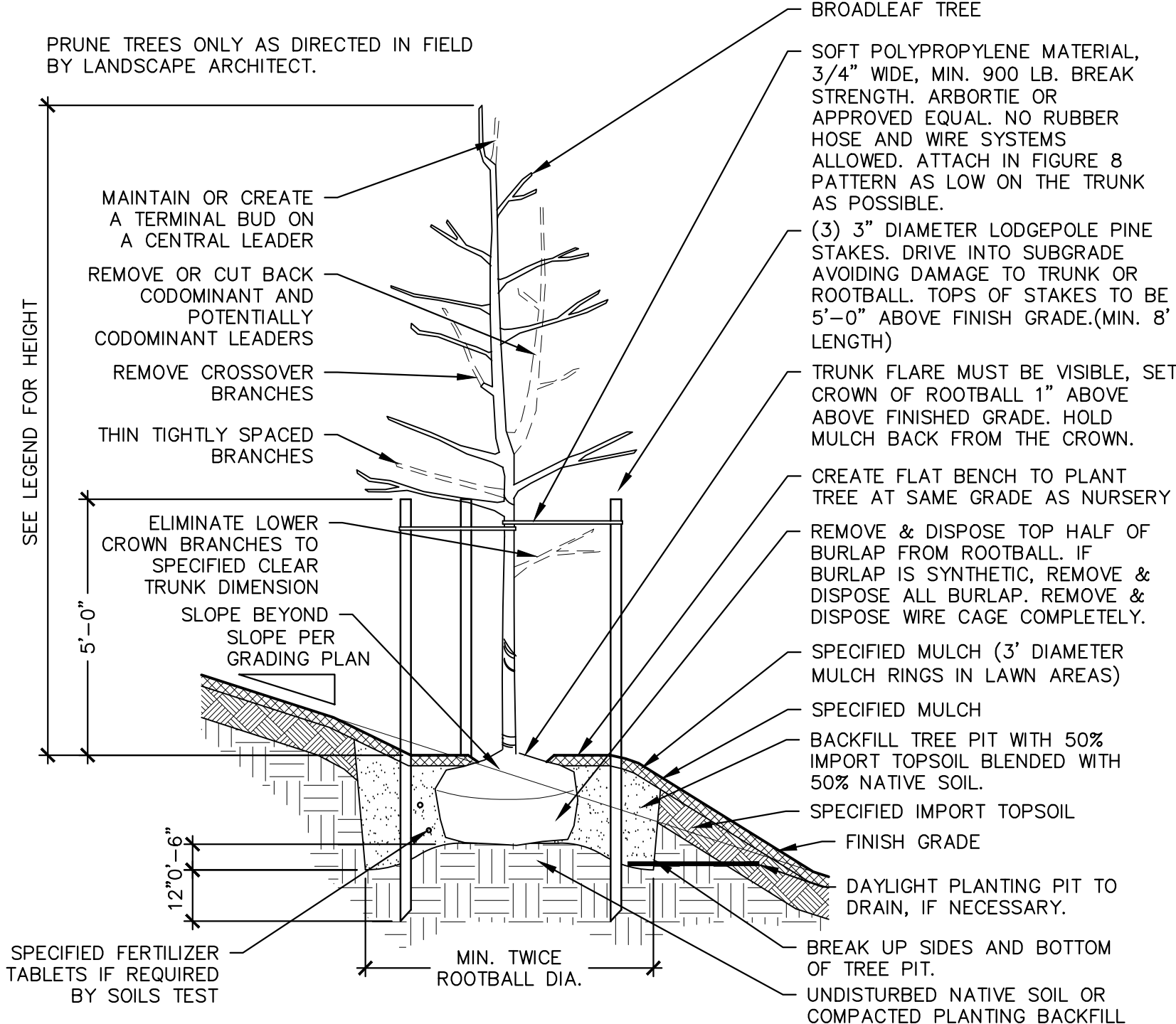
1 CONIFEROUS TREE PLANTING
3/8" = 1'-0"
P-BL-01



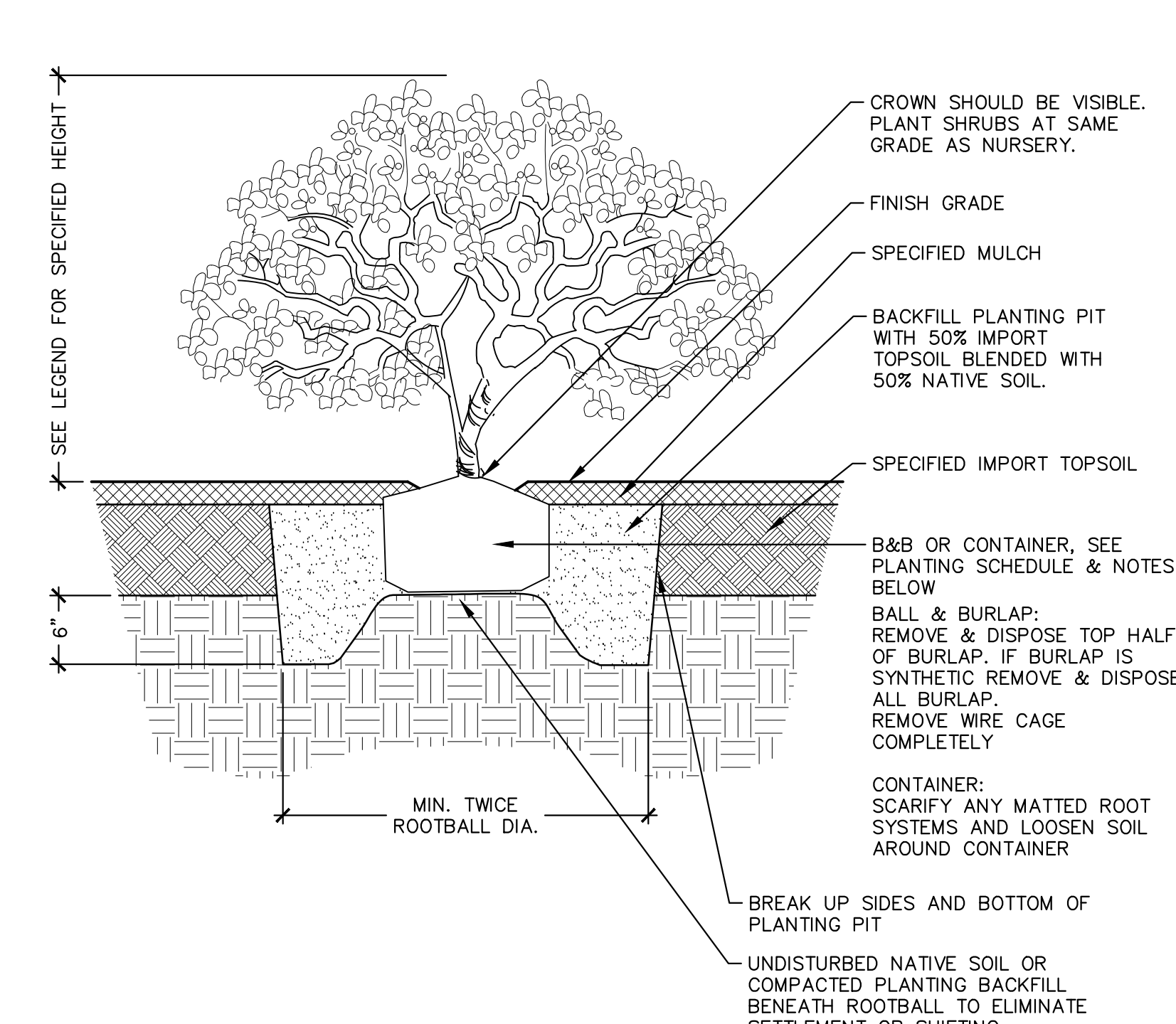
2 CONIFEROUS TREE ON SLOPE
3/8" = 1'-0"
P-BL-02



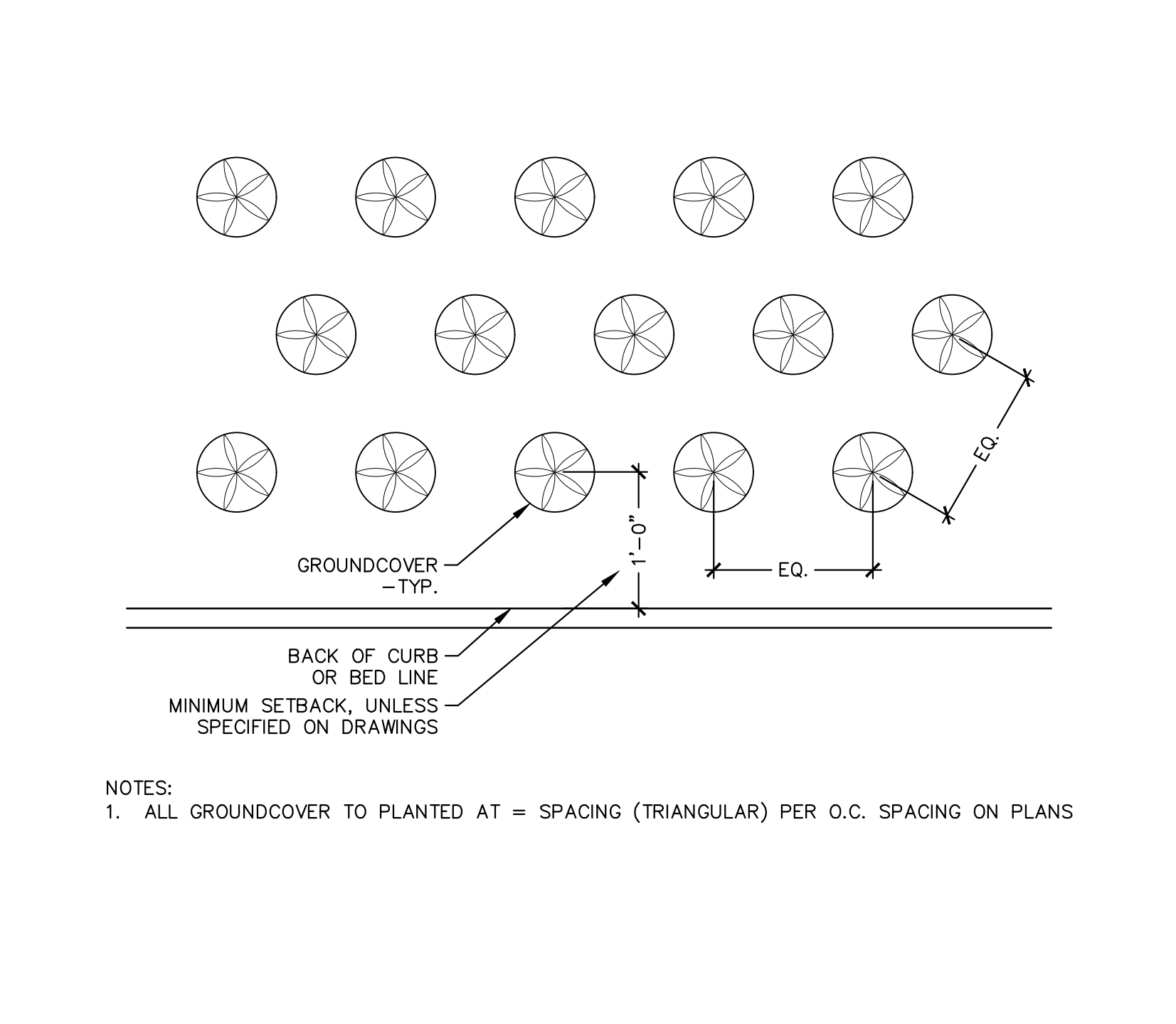
3 DECIDUOUS TREE PLANTING
3/8" = 1'-0"
P-BL-03



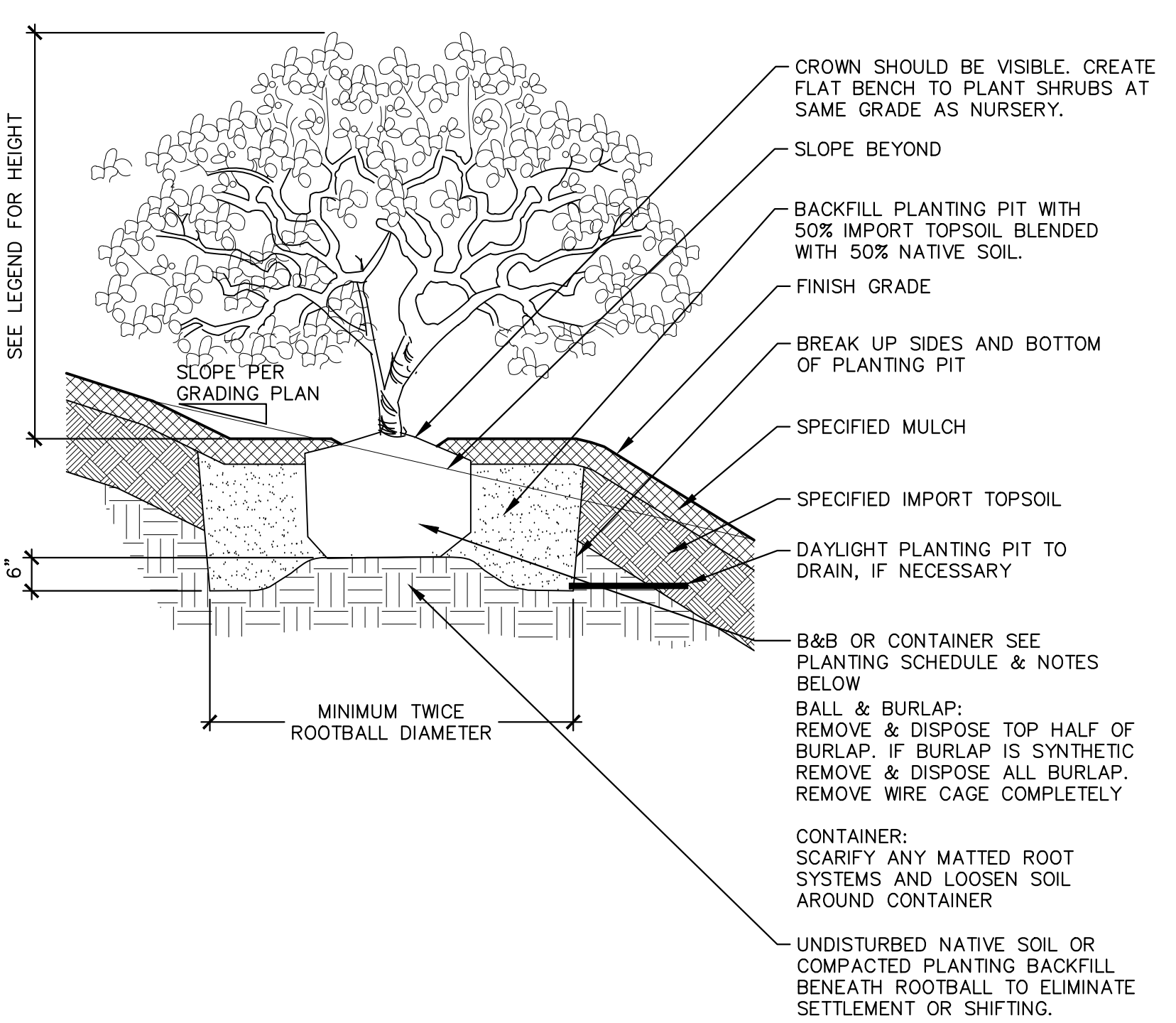
4 DECIDUOUS TREE PLANTING ON SLOPE
3/8" = 1'-0"
P-BL-04



6 SHRUB PLANTING
1" = 1'-0"
P-BL-07



5 GROUNDCOVER SPACING DIAGRAM
1" = 1'-0"
P-BL-05



7 SHRUB PLANTING ON SLOPE
1" = 1'-0"
P-BL-06

PLANT SCHEDULE

SYMBOL	QTY	BOTANICAL / COMMON NAME	SIZE	CONDITION / REMARKS
DECIDUOUS TREES				
	3	ACER RUBRUM 'OCTOBER GLORY' OCTOBER GLORY MAPLE	MIN. 2" CAL., 10'-12" MIN. HT.	MATCHED, B&B, WELL BRANCHED ABOVE 6' HT. MATURE CANOPY WIDTH 40' DIAMETER** ** SOURCE: ARBOR FOUNDATION
	6	NYSSA SYLVIATICA 'BLACK TUPELO' SOUR GUM	MIN. 2" CAL., 10'-12" MIN. HT.	MATCHED, B&B, WELL BRANCHED ABOVE 6' HT.
	5	SORBUS X HYBRIDA OAKLEAF MOUNTAIN ASH	MIN. 2" CAL., 10'-12" MIN. HT.	MATCHED, B&B, WELL BRANCHED ABOVE 6' HT.
EVERGREEN TREES				
	10	PSEUDOTSUGA MENZIESII DOUGLAS FIR	MIN. 8'-10" HT.	FULL AND BUSHY TO BASE, B&B OR CONT.
	2	THUJA PLICATA WESTERN RED CEDAR	MIN. 8'-10" HT.	FULL AND BUSHY TO BASE, B&B OR CONT.
SMALL ACCENT TREES				
	3	'AMELANCHIER X GRANDIFLORA' 'AUTUMN BRILLIANCE' 'AUTUMN BRILLIANCE' SERVICEBERRY	(3) 1" CAL. TRUNKS, MIN. 8'-10" HT	MATCHED, B&B, WELL BRANCHED
SHRUBS				
	38	CORNUS SERICEA RED TWIG DOGWOOD	2 GAL. CONTAINER	
	12	CORNUS STOLONIFERA 'KELSEY' KELSEY DOGWOOD	MIN. 12"-15" HT./SPD.	FULL & BUSHY, SPACING AS SHOWN ON PLAN
	41	GAULTHERIA SHALLON SALAL	MIN. 1 GAL. CONTAINER	FULL & BUSHY, SPACING AS SHOWN ON PLAN
	11	MAHONIA AQUIFOLIUM OREGON GRAPE	MIN. 24"-30" HT./SPD.	FULL & BUSHY, SPACING AS SHOWN ON PLAN
	141	RHODODENDRON 'LODER'S WHITE' LODER'S WHITE RHODODENDRON	MIN. 30"-36" HT./SPD.	FULL & BUSHY, SPACING AS SHOWN ON PLAN
	16	SPIRAEA JAPONICA 'MACROPHYLLA' BIG LEAF JAPANESE SPIREA	2 GAL. CONTAINER	
GROUND COVERS				
	506 SF	SHRUB MIX 1		
	78	CORNUS SERICEA 'KELSEY' KELSEY'S DWARF RED TWIG DOGWOOD	MIN. 18"-24" HT./SPD. & MIN. 2 GAL. CONTAINER	18" O.C. TRAINING. SPAC., START FIRST ROW 12" FROM EDGE
	78	SPIRAEA BETULIFOLIA 'TOR' WHITE FROST™ BIRCHLEAF SPIREA	MIN. 18"-24" HT./SPD. & MIN. 2 GAL. CONTAINER	18" O.C. TRAINING. SPAC., START FIRST ROW 12" FROM EDGE
	78	VIBURNUM DAVIDII DAVID VIBURNUM	MIN. 18"-24" HT./SPD. & MIN. 2 GAL. CONTAINER	18" O.C. TRAINING. SPAC., START FIRST ROW 12" FROM EDGE
	1,126 SF	SHRUB MIX 2		
	260	CORNUS SERICEA 'KELSEY' KELSEY'S DWARF RED TWIG DOGWOOD	MIN. 18"-24" HT./SPD. & MIN. 2 GAL. CONTAINER	18" O.C. TRAINING. SPAC., START FIRST ROW 12" FROM EDGE
	260	SPIRAEA BETULIFOLIA 'TOR' WHITE FROST™ BIRCHLEAF SPIREA	MIN. 18"-24" HT./SPD. & MIN. 2 GAL. CONTAINER	18" O.C. TRAINING. SPAC., START FIRST ROW 12" FROM EDGE
	1,156 SF	SHRUB MIX 3		
	268	GAULTHERIA SHALLON SALAL	MIN. 18"-24" HT./SPD. & MIN. 2 GAL. CONTAINER	18" O.C. TRAINING. SPAC., START FIRST ROW 12" FROM EDGE
	268	MAHONIA AQUIFOLIUM 'COMPACTA' COMPACT OREGON GRAPE	MIN. 18"-24" HT./SPD. & MIN. 2 GAL. CONTAINER	18" O.C. TRAINING. SPAC., START FIRST ROW 12" FROM EDGE
	8,107 SF	DEEP SHADE MIX		
	1,247	GAULTHERIA SHALLON SALAL	MIN. 18"-24" HT./SPD. & MIN. 2 GAL. CONTAINER	18" O.C. TRAINING. SPAC., START FIRST ROW 12" FROM EDGE
	1,247	MAHONIA AQUIFOLIUM 'COMPACTA' COMPACT OREGON GRAPE	MIN. 18"-24" HT./SPD. & MIN. 2 GAL. CONTAINER	18" O.C. TRAINING. SPAC., START FIRST ROW 12" FROM EDGE
	1,247	POLYSTICHUM MUNIUM WESTERN SWORD FERN	MIN. 18"-24" HT./SPD. & MIN. 2 GAL. CONTAINER	18" O.C. TRAINING. SPAC., START FIRST ROW 12" FROM EDGE
	6,711 SF	WEST FACADE		
	1,034	CORNUS SERICEA 'KELSEY' KELSEY'S DWARF RED TWIG DOGWOOD	MIN. 18"-24" HT./SPD. & MIN. 2 GAL. CONTAINER	18" O.C. TRAINING. SPAC., START FIRST ROW 12" FROM EDGE
	1,034	LONGICERA PILEATA PRIVET HONEYSUCKLE	MIN. 18"-24" HT./SPD. & MIN. 2 GAL. CONTAINER	18" O.C. TRAINING. SPAC., START FIRST ROW 12" FROM EDGE
	1,034	SPIRAEA BETULIFOLIA 'TOR' WHITE FROST™ BIRCHLEAF SPIREA	MIN. 18"-24" HT./SPD. & MIN. 2 GAL. CONTAINER	18" O.C. TRAINING. SPAC., START FIRST ROW 12" FROM EDGE



REVISIONS

NO.	DATE	DESCRIPTION

DATE: 3.2.2026
BCRA NO: 24143
DRAWN BY: CR, KH, PF
REVIEWED BY: AR
SHEET: PLANT SCHEDULE & DETAILS