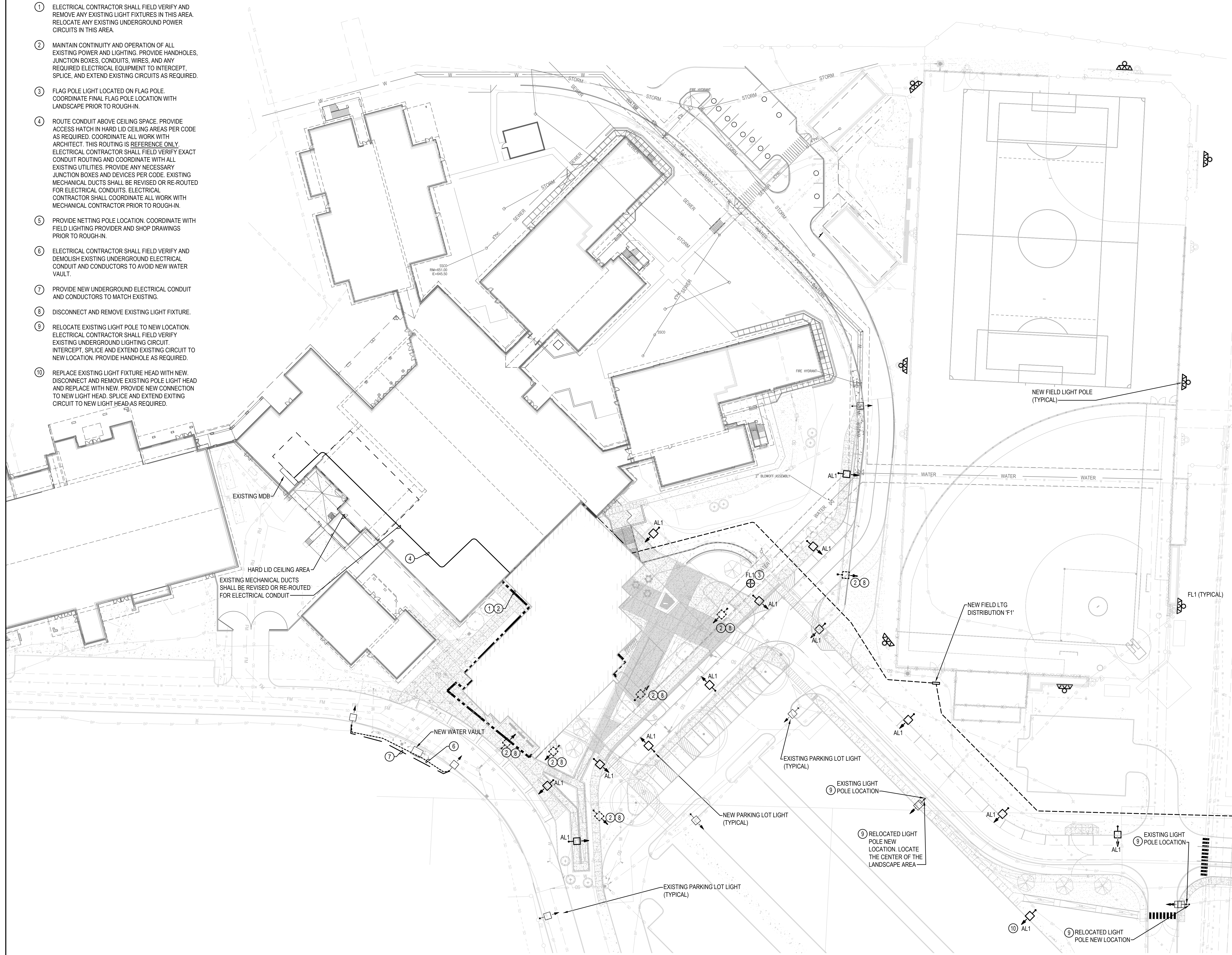
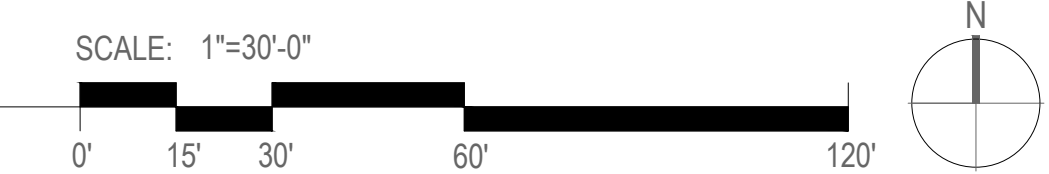


**CONSTRUCTION NOTES**

- ① ELECTRICAL CONTRACTOR SHALL FIELD VERIFY AND REMOVE ANY EXISTING LIGHT FIXTURES IN THIS AREA. RELOCATE ANY EXISTING UNDERGROUND POWER CIRCUITS IN THIS AREA.
- ② MAINTAIN CONTINUITY AND OPERATION OF ALL EXISTING POWER AND LIGHTING. PROVIDE HANDHOLES, JUNCTION BOXES, CONDUITS, WIRES, AND ANY REQUIRED ELECTRICAL EQUIPMENT TO INTERCEPT, SPLICE, AND EXTEND EXISTING CIRCUITS AS REQUIRED.
- ③ FLAG POLE LIGHT LOCATED ON FLAG POLE. COORDINATE FINAL FLAG POLE LOCATION WITH LANDSCAPE PRIOR TO ROUGH-IN.
- ④ ROUTE CONDUIT ABOVE CEILING SPACE. PROVIDE ACCESS HATCH IN HARD LID CEILING AREAS PER CODE AS REQUIRED. COORDINATE ALL WORK WITH ARCHITECT. THIS ROUTING IS REFERENCE ONLY. ELECTRICAL CONTRACTOR SHALL FIELD VERIFY EXACT CONDUIT ROUTING AND COORDINATE WITH ALL EXISTING UTILITIES. PROVIDE ANY NECESSARY JUNCTION BOXES AND DEVICES PER CODE. EXISTING MECHANICAL DUCTS SHALL BE REVISED OR RE-ROUTED FOR ELECTRICAL CONDUITS. ELECTRICAL CONTRACTOR SHALL COORDINATE ALL WORK WITH MECHANICAL CONTRACTOR PRIOR TO ROUGH-IN.
- ⑤ PROVIDE NETTING POLE LOCATION. COORDINATE WITH FIELD LIGHTING PROVIDER AND SHOP DRAWINGS PRIOR TO ROUGH-IN.
- ⑥ ELECTRICAL CONTRACTOR SHALL FIELD VERIFY AND DEMOLISH EXISTING UNDERGROUND ELECTRICAL CONDUIT AND CONDUCTORS TO AVOID NEW WATER VAULT.
- ⑦ PROVIDE NEW UNDERGROUND ELECTRICAL CONDUIT AND CONDUCTORS TO MATCH EXISTING.
- ⑧ DISCONNECT AND REMOVE EXISTING LIGHT FIXTURE.
- ⑨ RELOCATE EXISTING LIGHT POLE TO NEW LOCATION. ELECTRICAL CONTRACTOR SHALL FIELD VERIFY EXISTING UNDERGROUND LIGHTING CIRCUIT. INTERCEPT, SPLICE AND EXTEND EXISTING CIRCUIT TO NEW LOCATION. PROVIDE HANDHOLE AS REQUIRED.
- ⑩ REPLACE EXISTING LIGHT FIXTURE HEAD WITH NEW. DISCONNECT AND REMOVE EXISTING POLE LIGHT HEAD AND REPLACE WITH NEW. PROVIDE NEW CONNECTION TO NEW LIGHT HEAD. SPLICE AND EXTEND EXISTING CIRCUIT TO NEW LIGHT HEAD AS REQUIRED.



① **ELECTRICAL SITE PLAN - NORTH**  
1" = 30'-0"



REVISION	DATE

DATE	3.2.2026
BCRA NO.	24143
DRAWN BY:	
REVIEWED BY:	
DATE:	
SITE PLAN - NORTH	

IF SHEET MEASURES LESS THAN 30"x42", IT IS A REDUCED PRINT. REDUCE SCALE ACCORDINGLY





