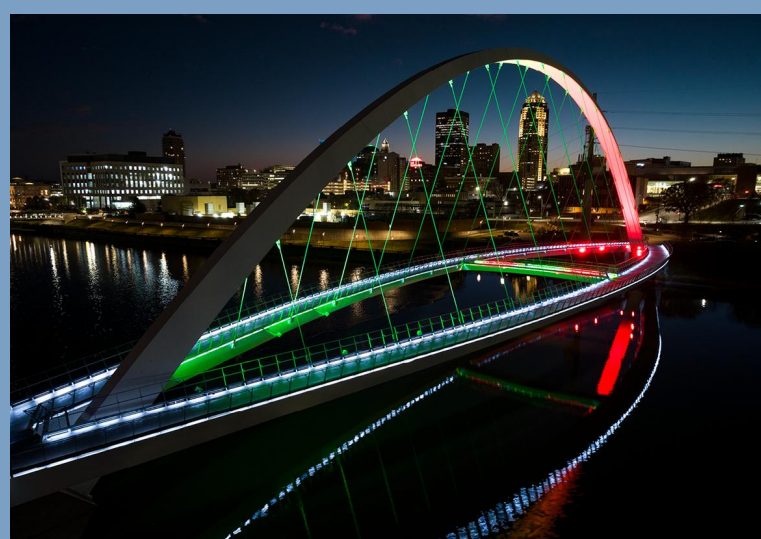


Sports Illustrated Stadium, Harrison, New Jersey, USA



UBS Arena, Elmont, New York, USA



Iowa Women of Achievement Bridge, Des Moines, Iowa, USA



Tottenham Hotspur FC Training Ground, Tottenham, London, UK

Bonney Lake High School BB SO SB

Bonney Lake, WA



Sales Representative: Tim Butz · Designed By: Cameron Isiminger · Design No.: 247083Cr1 · April 02, 2026

LIGHTING SYSTEM

Structure/Fixture Summary							
Structure ID	Structure Height	Fixt. Attachment Ht.	Fixture Qty	Fixture Type	Design Load	Circuit	
A1-A2	60'	60'	3	TLC-LED-900	2.64 kW	A	
		16'	1	TLC-BT-575	0.57 kW	A	
A3	60'	60'	3	TLC-LED-900	2.64 kW	B	
		16'	1	TLC-BT-575	0.57 kW	B	
A4	60'	60'	3	TLC-LED-900	2.64 kW	C	
		16'	1	TLC-BT-575	0.57 kW	C	
A5-A6	70'	70'	1	TLC-LED-900	0.88 kW	D	
		70'	3	TLC-LED-1200	3.49 kW	D	
		16'	1	TLC-BT-575	0.57 kW	D	
B1	80'	80'	5	TLC-LED-1200	5.82 kW	A	
		16'	1	TLC-BT-575	0.57 kW	A	
B2	80'	80'	2	TLC-LED-900	1.76 kW	A	
		80'	2	TLC-LED-900	1.76 kW	B	
		80'	3	TLC-LED-1200	3.49 kW	A	
		80'	4	TLC-LED-1200	4.66 kW	B	
		16'	1	TLC-BT-575	0.57 kW	A	
		16'	1	TLC-BT-575	0.57 kW	B	
B3	80'	80'	2	TLC-LED-1200	2.33 kW	B	
		80'	3	TLC-LED-900	2.64 kW	B	
		16'	1	TLC-BT-575	0.57 kW	B	
B4	80'	80'	1	TLC-LED-900	0.88 kW	D	
		80'	6	TLC-LED-1200	6.99 kW	D	
		16'	1	TLC-BT-575	0.57 kW	D	
		80'	7	TLC-LED-1200	8.15 kW	D	
B5	80'	16'	1	TLC-BT-575	0.57 kW	D	
		80'	2	TLC-LED-1200	2.33 kW	A	
		80'	4	TLC-LED-1200	4.66 kW	B	
C1	80'	16'	1	TLC-BT-575	0.57 kW	A	
		16'	1	TLC-BT-575	0.57 kW	B	
		70'	5	TLC-LED-1200	5.82 kW	D	
		16'	2	TLC-BT-575	1.15 kW	D	
14			89		86.80 kW		

*Fixtures in this design have dimmed output values to meet design specific needs.

Circuit Summary			
Circuit	Description	Design Load	Fixture Qty
A	Softball 1	21.57 kW	23
B	Softball 2/Soccer	20.99 kW	22
C	Softball 2	3.21 kW	4
D	Baseball	41.03 kW	40

Fixture Type Summary								
Type	Circuit	Source	Avg. Wattage	Avg. Lumens	L90	L80	L70	Quantity
TLC-BT-575	A	LED 4500K - 75 CRI	575W	52,124	>120,000	>120,000	>120,000	5
TLC-BT-575	B	LED 4500K - 75 CRI	575W	52,124	>120,000	>120,000	>120,000	4
TLC-BT-575	C	LED 4500K - 75 CRI	575W	52,124	>120,000	>120,000	>120,000	1
TLC-BT-575	D	LED 4500K - 75 CRI	575W	52,124	>120,000	>120,000	>120,000	8
TLC-LED-1200	A	LED 4500K - 75 CRI	1165W	146,442	>120,000	>120,000	>120,000	10
TLC-LED-1200	B	LED 4500K - 75 CRI	1165W	146,401	>120,000	>120,000	>120,000	10
TLC-LED-1200	D	LED 4500K - 75 CRI	1165W	147,596	>120,000	>120,000	>120,000	29
TLC-LED-900	A	LED 4500K - 75 CRI	880W	95,942	>120,000	>120,000	>120,000	8
TLC-LED-900	B	LED 4500K - 75 CRI	880W	99,907	>120,000	>120,000	>120,000	8
TLC-LED-900	C	LED 4500K - 75 CRI	880W	97,181	>120,000	>120,000	>120,000	3
TLC-LED-900	D	LED 4500K - 75 CRI	880W	97,405	>120,000	>120,000	>120,000	3

Guaranteed Performance: The ILLUMINATION described above is guaranteed per your Musco Warranty document.

Field Measurements: Individual field measurements may vary from computer-calculated predictions.

Electrical System Requirements: Refer to Amperage Draw Chart and/or the "Musco Control System Summary" for electrical sizing.

Installation Requirements: Results assume ± 3% nominal voltage at line side of the driver and structures located within 3 feet (1m) of design locations.

Single Fixture Amperage Draw Chart								
Driver Specifications (.90 min power factor)		Line Amperage Per Fixture (max draw)						
Single Phase Voltage		208 (60)	220 (60)	240 (60)	277 (60)	347 (60)	380 (60)	480 (60)
TLC-LED-1200		6.9	6.5	6.0	5.2	4.2	3.8	3.0
TLC-LED-900		5.2	4.9	4.5	3.9	3.1	2.9	2.3
TLC-BT-575		3.3	3.2	2.9	2.5	2.0	1.8	1.5

*Amp draw based on 100% fixture output, consult design specific datasheet for adjusted amperage draw chart

Light Level Summary								
Calculation Grid Summary								
Grid Name	Calculation Metric	Illumination Ave					Circuits	Fixture Qty
		Ave	Min	Max	Max/Min	Ave/Min		
Baseball (Infield)	Horizontal Illuminance	55.48	43	67	1.56	1.29	D	40
Baseball (Outfield)	Horizontal Illuminance	32.77	22	52	2.36	1.49	D	40
Blanket Grid	Horizontal	4.14	0	69	-	-	A,B,C,D	89
PL 1	Max Vertical Illuminance Metric	0.44	0	1	68.11	20.32	A,B,C,D	89
PL 1 Cd	Max Candela (by Fixture)	3144.22	510	4844	9.50	6.17	A,B,C,D	89
PL 2	Max Vertical Illuminance Metric	0.13	0	1	-	-	A,B,C,D	89



Light Level Summary

Calculation Grid Summary								
Grid Name	Calculation Metric	Illumination Ave					Circuits	Fixture Qty
		Ave	Min	Max	Max/Min	Ave/Min		
PL 2 Cd	Max Candela (by Fixture)	2072.92	1	5453	8785.67	3339.51	A,B,C,D	89
Soccer	Horizontal Illuminance	34.94	20	44	2.18	1.73	B	22
Softball 1 (Infield)	Horizontal Illuminance	50.45	37	60	1.59	1.35	A	23
Softball 1 (Outfield)	Horizontal Illuminance	35.91	24	49	2.05	1.51	A	23
Softball 2 (Infield)	Horizontal Illuminance	50.47	34	63	1.87	1.49	B,C	26
Softball 2 (Outfield)	Horizontal Illuminance	34.65	21	44	2.13	1.67	B,C	26

Guaranteed Performance: The ILLUMINATION described above is guaranteed per your Musco Warranty document.

Field Measurements: Individual field measurements may vary from computer-calculated predictions.

Electrical System Requirements: Refer to Amperage Draw Chart and/or the "Musco Control System Summary" for electrical sizing.

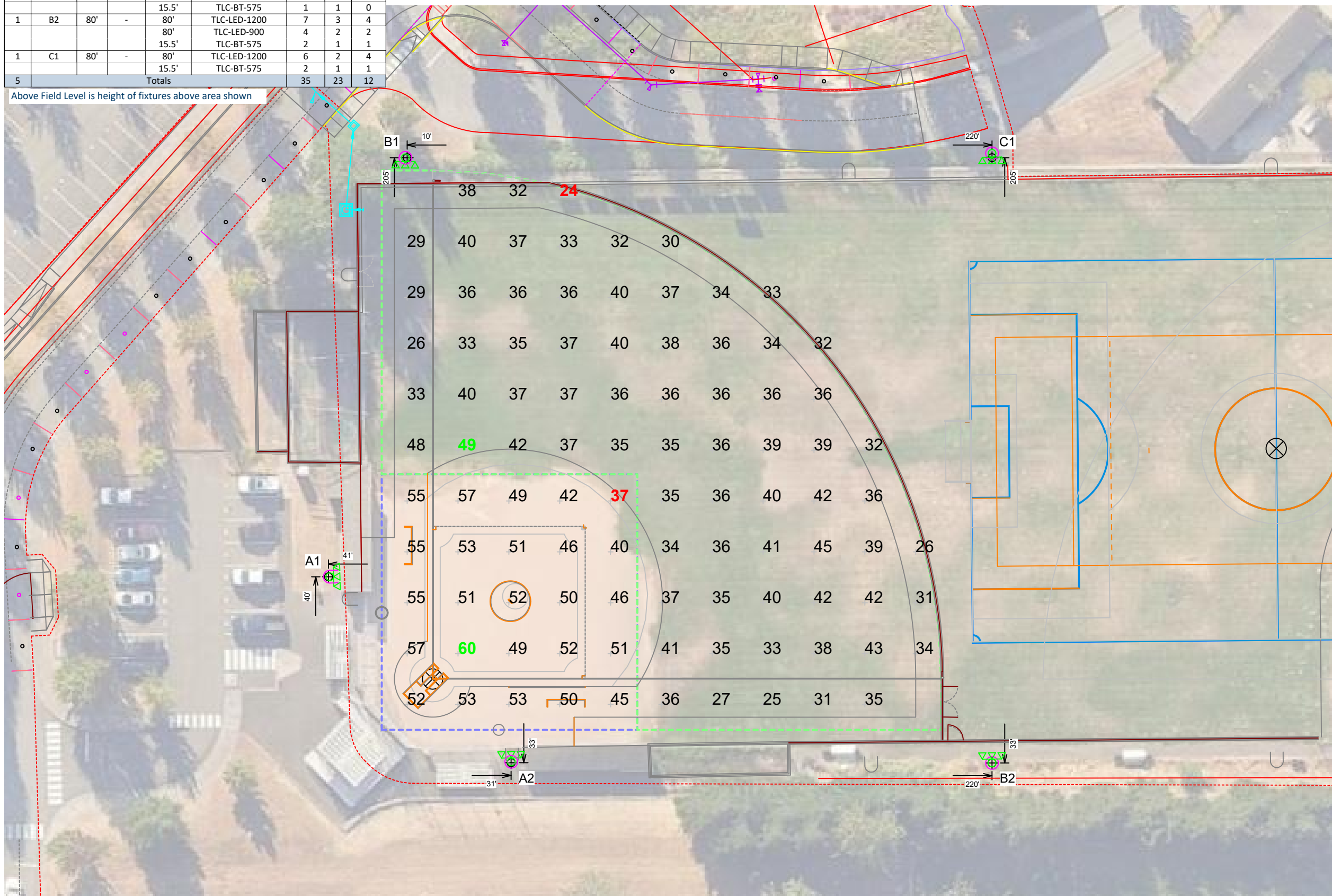
Installation Requirements: Results assume ± 3% nominal voltage at line side of the driver and structures located within 3 feet (1m) of design locations.



Equipment List For Areas Shown

Structure				Fixtures				
QTY	STRUCTURE ID	SIZE	GRADE ELEVATION	ABOVE FIELD LEVEL	FIXTURE TYPE	QTY/POLE	THIS GRID	OTHER GRIDS
2	A1-A2	60'	-	60'	TLC-LED-900	3	3	0
				15.5'	TLC-BT-575	1	1	0
1	B1	80'	-	80'	TLC-LED-1200	5	5	0
				15.5'	TLC-BT-575	1	1	0
1	B2	80'	-	80'	TLC-LED-1200	7	3	4
				80'	TLC-LED-900	4	2	2
				15.5'	TLC-BT-575	2	1	1
1	C1	80'	-	80'	TLC-LED-1200	6	2	4
				15.5'	TLC-BT-575	2	1	1
5	Totals					35	23	12

Above Field Level is height of fixtures above area shown



Bonney Lake High School BB SO SB

Bonney Lake, WA

Grid Summary	
Name:	Softball 1
Size:	200'/200'/200' - basepath 60'
Spacing:	20.0' x 20.0'
Height:	3.0' above grade

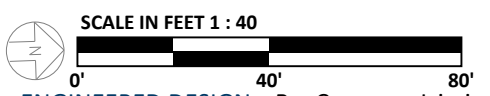
	MAINTAINED HORIZONTAL FOOTCANDLES	
	Infield	Outfield
Guaranteed Average:	50	30
Scan Average:	50.45	35.91
Maximum:	60	49
Minimum:	37	24
Avg/Min:	1.35	1.51
Guaranteed Max/Min:	2	2.5
Max/Min:	1.59	2.05
UG (adjacent pts):	1.21	1.48
CU:	0.62	
No. of Points:	25	73
FIXTURE INFORMATION		
Applied Circuits:	A	
No. of Fixtures:	23	
Total Load:	21.57 kW	

Guaranteed Performance: The ILLUMINATION described above is guaranteed per your Musco Warranty document.

Field Measurements: Individual field measurements may vary from computer-calculated predictions.

Electrical System Requirements: Refer to Amperage Draw Chart and/or the "Musco Control System Summary" for electrical sizing.

Installation Requirements: Results assume ± 3% nominal voltage at line side of the driver and structures located within 3 feet (1m) of design locations.



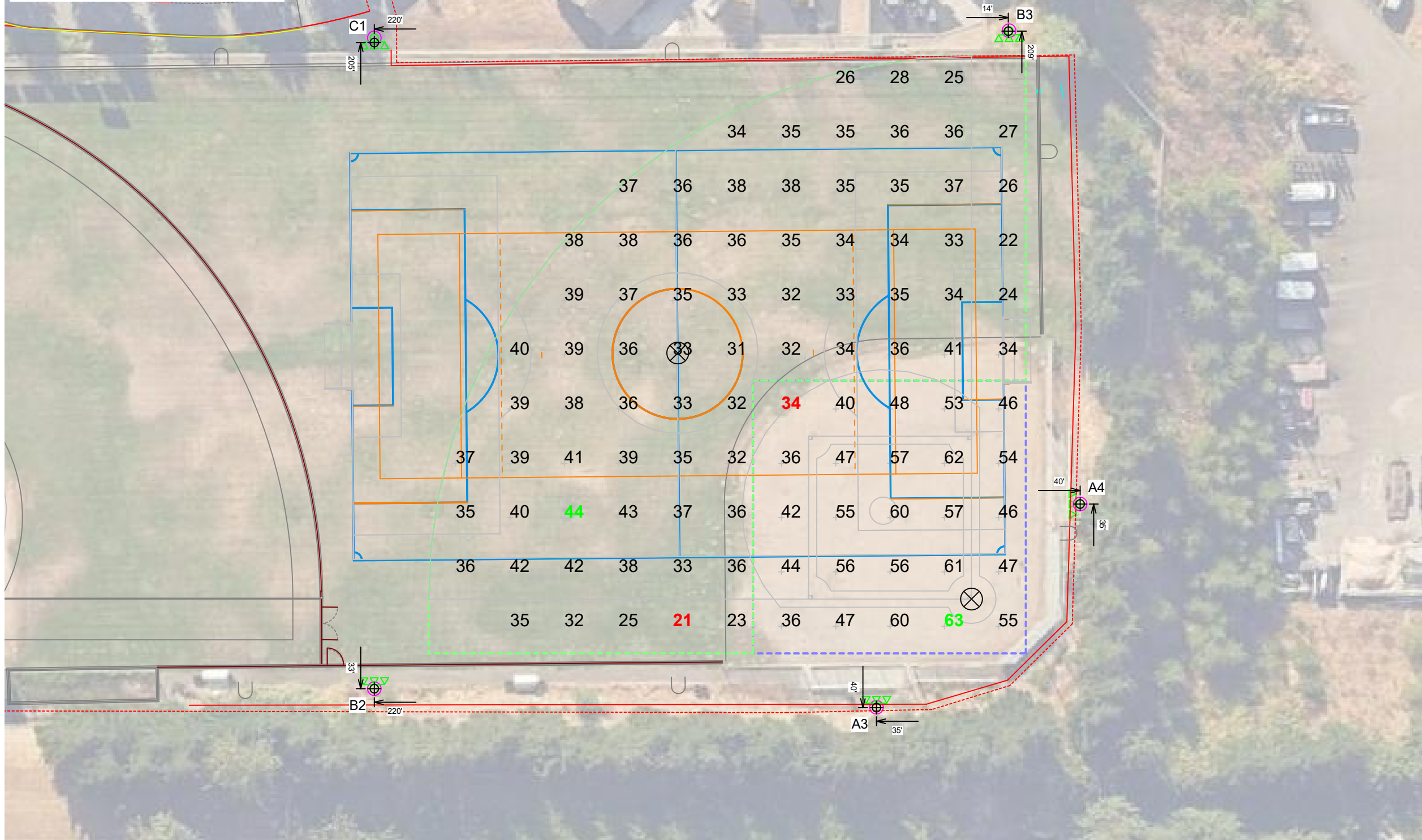
Pole location(s) ⊕ dimensions are relative to 0,0 reference point(s) ⊗



Equipment List For Areas Shown

Structure				Fixtures				
QTY	STRUCTURE ID	SIZE	GRADE ELEVATION	ABOVE FIELD LEVEL	FIXTURE TYPE	QTY/POLE	THIS GRID	OTHER GRIDS
2	A3-A4	60'	-	60'	TLC-LED-900	3	3	0
				15.5'	TLC-BT-575	1	1	0
1	B2	80'	-	80'	TLC-LED-1200	7	4	3
				80'	TLC-LED-900	4	2	2
				15.5'	TLC-BT-575	2	1	1
1	B3	80'	-	80'	TLC-LED-1200	2	2	0
				80'	TLC-LED-900	3	3	0
				15.5'	TLC-BT-575	1	1	0
1	C1	80'	-	80'	TLC-LED-1200	6	4	2
				15.5'	TLC-BT-575	2	1	1
5	Totals					35	26	9

Above Field Level is height of fixtures above area shown



Bonney Lake High School BB SO SB

Bonney Lake, WA

Grid Summary	
Name:	Softball 2
Size:	200'/200'/200' - basepath 60'
Spacing:	20.0' x 20.0'
Height:	3.0' above grade

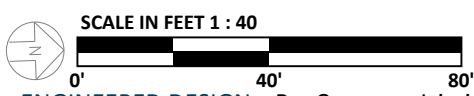
	MAINTAINED HORIZONTAL FOOTCANDLES	
	Infield	Outfield
Guaranteed Average:	50	30
Scan Average:	50.47	34.65
Maximum:	63	44
Minimum:	34	21
Avg/Min:	1.49	1.67
Guaranteed Max/Min:	2	2.5
Max/Min:	1.87	2.13
UG (adjacent pts):	1.31	1.61
CU:	0.54	
No. of Points:	25	73
FIXTURE INFORMATION		
Applied Circuits:	B,C	
No. of Fixtures:	26	
Total Load:	24.20 kW	

Guaranteed Performance: The ILLUMINATION described above is guaranteed per your Musco Warranty document.

Field Measurements: Individual field measurements may vary from computer-calculated predictions.

Electrical System Requirements: Refer to Amperage Draw Chart and/or the "Musco Control System Summary" for electrical sizing.

Installation Requirements: Results assume ± 3% nominal voltage at line side of the driver and structures located within 3 feet (1m) of design locations.



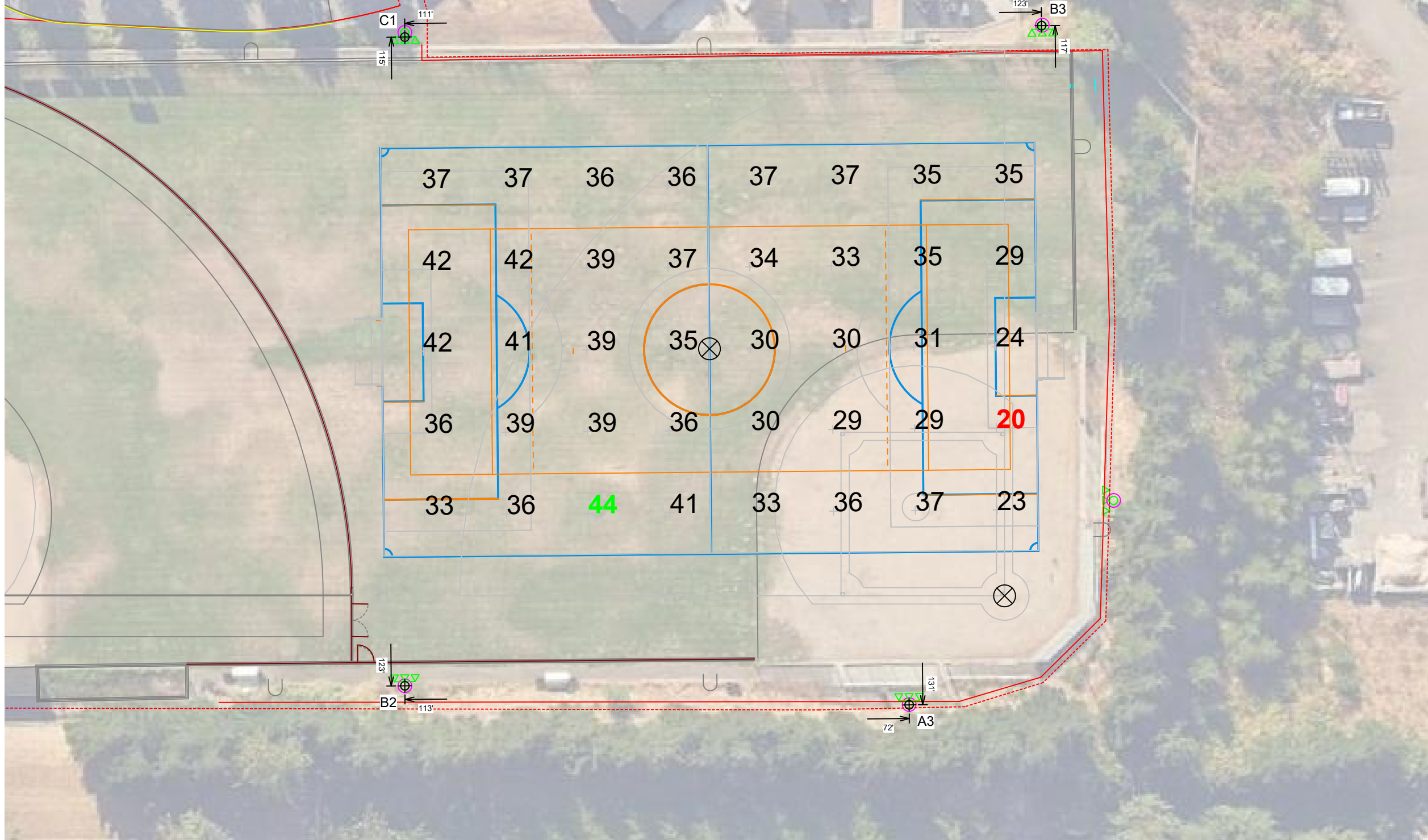
Pole location(s) ⊕ dimensions are relative to 0,0 reference point(s) ⊗



Equipment List For Areas Shown

Structure				Fixtures				
QTY	STRUCTURE ID	SIZE	GRADE ELEVATION	ABOVE FIELD LEVEL	FIXTURE TYPE	QTY/POLE	THIS GRID	OTHER GRIDS
1	A3	60'	-	60'	TLC-LED-900	3	3	0
				15.5'	TLC-BT-575	1	1	0
1	B2	80'	-	80'	TLC-LED-1200	7	4	3
				80'	TLC-LED-900	4	2	2
				15.5'	TLC-BT-575	2	1	1
1	B3	80'	-	80'	TLC-LED-1200	2	2	0
				80'	TLC-LED-900	3	3	0
				15.5'	TLC-BT-575	1	1	0
1	C1	80'	-	80'	TLC-LED-1200	6	4	2
				15.5'	TLC-BT-575	2	1	1
4	Totals					31	22	9

Above Field Level is height of fixtures above area shown



SCALE IN FEET 1 : 40

ENGINEERED DESIGN By: Cameron Isiminger • File #247083Cr1 • 02-Apr-26

Pole location(s) ⊕ dimensions are relative to 0,0 reference point(s) ⊗

Bonney Lake High School BB SO SB

Bonney Lake, WA

Grid Summary	
Name:	Soccer
Size:	240' x 150'
Spacing:	30.0' x 30.0'
Height:	3.0' above grade

Illumination Summary	
	ENTIRE GRID
Guaranteed Average:	30
Scan Average:	34.94
Maximum:	44
Minimum:	20
Avg/Min:	1.73
Guaranteed Max/Min:	2.5
Max/Min:	2.18
UG (adjacent pts):	1.63
CU:	0.51
No. of Points:	40
FIXTURE INFORMATION	
Applied Circuits:	B
No. of Fixtures:	22
Total Load:	20.99 kW

Guaranteed Performance: The ILLUMINATION described above is guaranteed per your Musco Warranty document.

Field Measurements: Individual field measurements may vary from computer-calculated predictions.

Electrical System Requirements: Refer to Amperage Draw Chart and/or the "Musco Control System Summary" for electrical sizing.

Installation Requirements: Results assume ± 3% nominal voltage at line side of the driver and structures located within 3 feet (1m) of design locations.



Not to be reproduced in whole or part without the written consent of Musco Sports Lighting, LLC. ©1981, 2026 Musco Sports Lighting, LLC.

ILLUMINATION SUMMARY

Equipment List For Areas Shown

QTY	Structure			Fixtures				
	STRUCTURE ID	SIZE	GRADE ELEVATION	ABOVE FIELD LEVEL	FIXTURE TYPE	QTY/POLE	THIS GRID	OTHER GRIDS
2	A5-A6	70'	-	70'	TLC-LED-1200	3	3	0
				70'	TLC-LED-900	1	1	0
				15.5'	TLC-BT-575	1	1	0
1	B4	80'	-	80'	TLC-LED-1200	6	6	0
				80'	TLC-LED-900	1	1	0
				15.5'	TLC-BT-575	1	1	0
1	B5	80'	-	80'	TLC-LED-1200	7	7	0
				15.5'	TLC-BT-575	1	1	0
				70'	TLC-LED-1200	5	5	0
2	C2-C3	70'	-	70'	TLC-LED-1200	5	5	0
				15.5'	TLC-BT-575	2	2	0
				Totals			40	40

Above Field Level is height of fixtures above area shown



Bonney Lake High School BB SO SB

Bonney Lake, WA

Grid Summary

Name: Baseball
 Size: 320'/335'/320' - basepath 90'
 Spacing: 30.0' x 30.0'
 Height: 3.0' above grade

Illumination Summary

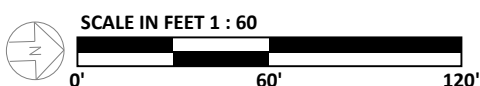
	MAINTAINED HORIZONTAL FOOTCANDLES	
	Infield	Outfield
Guaranteed Average:	50	30
Scan Average:	55.48	32.77
Maximum:	67	52
Minimum:	43	22
Avg/Min:	1.29	1.49
Guaranteed Max/Min:	2	2.5
Max/Min:	1.56	2.36
UG (adjacent pts):	1.41	1.60
CU:	0.79	
No. of Points:	25	92
FIXTURE INFORMATION		
Applied Circuits:	D	
No. of Fixtures:	40	
Total Load:	41.03 kW	

Guaranteed Performance: The ILLUMINATION described above is guaranteed per your Musco Warranty document.

Field Measurements: Individual field measurements may vary from computer-calculated predictions.

Electrical System Requirements: Refer to Amperage Draw Chart and/or the "Musco Control System Summary" for electrical sizing.

Installation Requirements: Results assume ± 3% nominal voltage at line side of the driver and structures located within 3 feet (1m) of design locations.

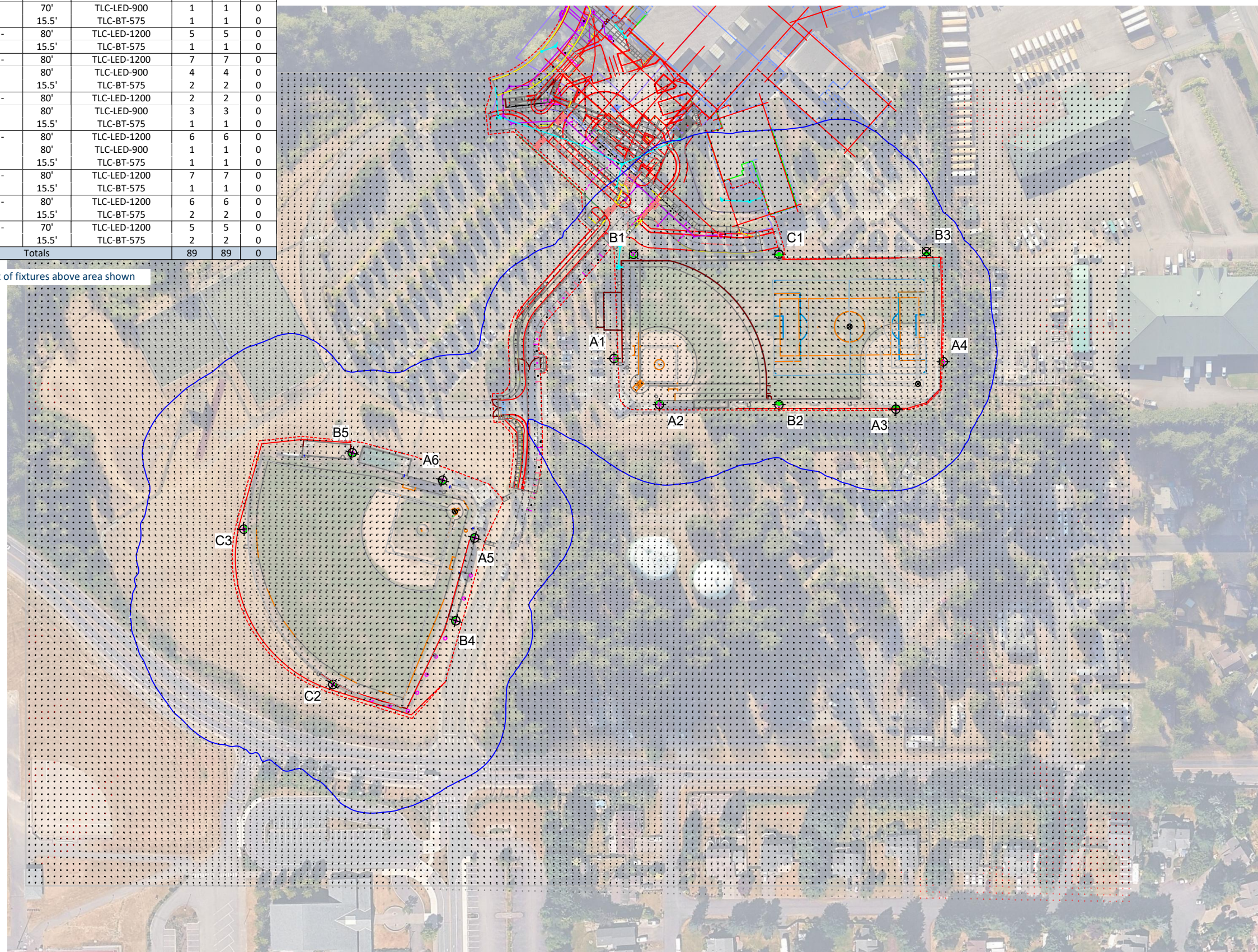


Pole location(s) ⊕ dimensions are relative to 0,0 reference point(s) ⊗



Equipment List For Areas Shown								
QTY	Structure			Fixtures				
	STRUCTURE ID	SIZE	GRADE ELEVATION	ABOVE FIELD LEVEL	FIXTURE TYPE	QTY/POLE	THIS GRID	OTHER GRIDS
4	A1-A4	60'	-	60'	TLC-LED-900	3	3	0
				15.5'	TLC-BT-575	1	1	0
2	A5-A6	70'	-	70'	TLC-LED-1200	3	3	0
				70'	TLC-LED-900	1	1	0
				15.5'	TLC-BT-575	1	1	0
1	B1	80'	-	80'	TLC-LED-1200	5	5	0
				15.5'	TLC-BT-575	1	1	0
1	B2	80'	-	80'	TLC-LED-1200	7	7	0
				80'	TLC-LED-900	4	4	0
				15.5'	TLC-BT-575	2	2	0
1	B3	80'	-	80'	TLC-LED-1200	2	2	0
				80'	TLC-LED-900	3	3	0
				15.5'	TLC-BT-575	1	1	0
1	B4	80'	-	80'	TLC-LED-1200	6	6	0
				80'	TLC-LED-900	1	1	0
				15.5'	TLC-BT-575	1	1	0
1	B5	80'	-	80'	TLC-LED-1200	7	7	0
				15.5'	TLC-BT-575	1	1	0
1	C1	80'	-	80'	TLC-LED-1200	6	6	0
				15.5'	TLC-BT-575	2	2	0
2	C2-C3	70'	-	70'	TLC-LED-1200	5	5	0
				15.5'	TLC-BT-575	2	2	0
14	Totals					89	89	0

Above Field Level is height of fixtures above area shown



Pole location(s) ⊕ dimensions are relative to 0,0 reference point(s) ⊗



ENGINEERED DESIGN By: Cameron Isiminger • File #247083Cr1 • 02-Apr-26

Bonney Lake High School BB SO SB

Bonney Lake, WA

Grid Summary	
Name:	Blanket Grid
Spacing:	10.0' x 10.0'
Height:	3.0' above grade

Illumination Summary	
MAINTAINED HORIZONTAL FOOTCANDLES	
Entire Grid	
Scan Average:	4.14
Maximum:	69
Minimum:	0
Avg/Min:	-
Max/Min:	-
UG (adjacent pts):	19.15
CU:	0.91
No. of Points:	22575
FIXTURE INFORMATION	
Applied Circuits:	A,B,C,D
No. of Fixtures:	89
Total Load:	86.80 kW

Guaranteed Performance: The ILLUMINATION described above is guaranteed per your Musco Warranty document.

Field Measurements: Individual field measurements may vary from computer-calculated predictions.

Electrical System Requirements: Refer to Amperage Draw Chart and/or the "Musco Control System Summary" for electrical sizing.

Installation Requirements: Results assume ± 3% nominal voltage at line side of the driver and structures located within 3 feet (1m) of design locations.



Not to be reproduced in whole or part without the written consent of Musco Sports Lighting, LLC. ©1981, 2026 Musco Sports Lighting, LLC.

ILLUMINATION SUMMARY

Bonney Lake High School BB SO SB

Bonney Lake, WA

Grid Summary	
Name:	PL 1
Spacing:	30.0' x 10.0'
Height:	3.0' above grade

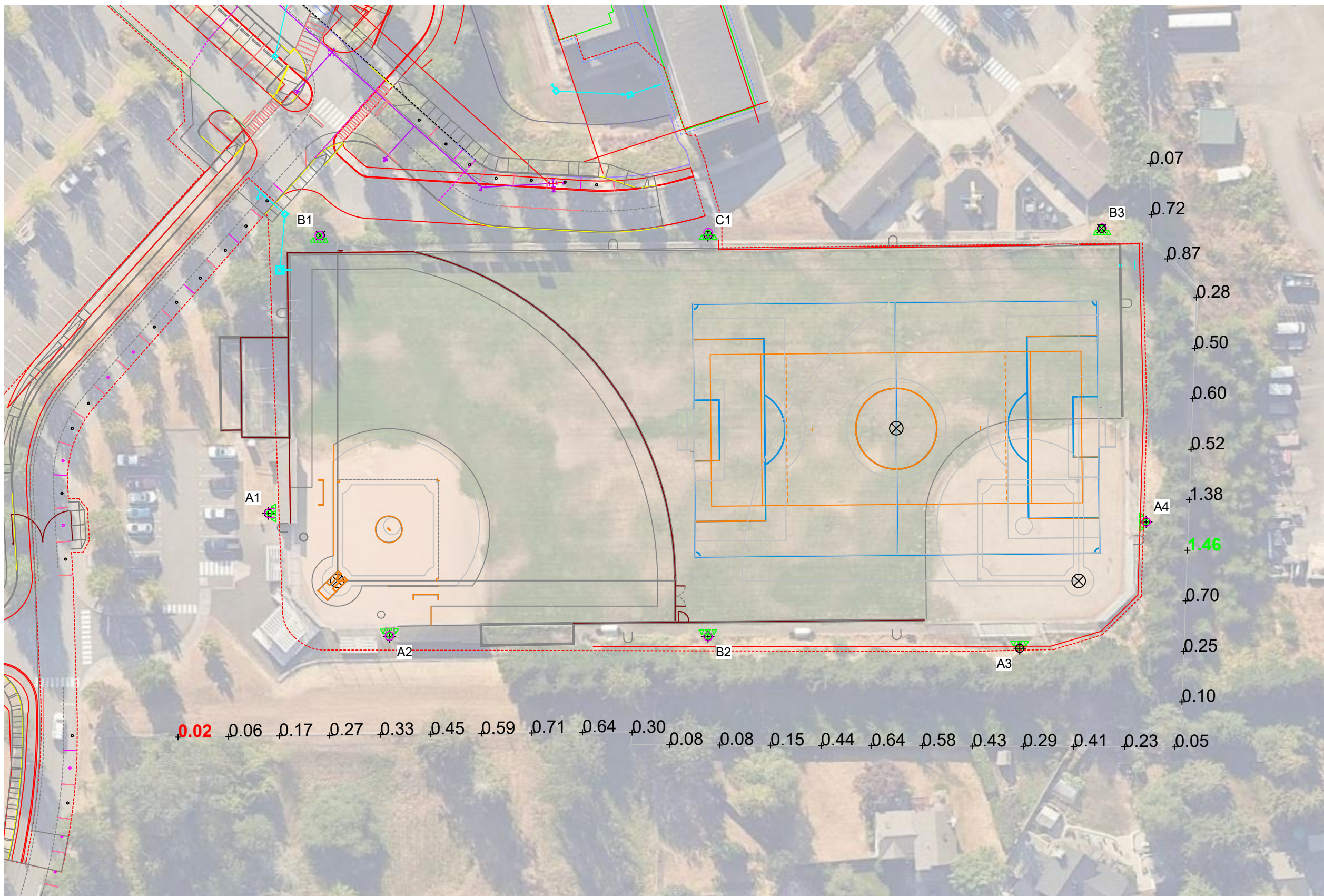
Illumination Summary	
MAINTAINED MAX VERTICAL FOOTCANDLES	
Scan Average:	0.44
Maximum:	1
Minimum:	0
No. of Points:	33
FIXTURE INFORMATION	
Applied Circuits:	A,B,C,D
No. of Fixtures:	89
Total Load:	86.80 kW

Guaranteed Performance: The ILLUMINATION described above is guaranteed per your Musco Warranty document.

Field Measurements: Individual field measurements may vary from computer-calculated predictions.

Electrical System Requirements: Refer to Amperage Draw Chart and/or the "Musco Control System Summary" for electrical sizing.

Installation Requirements: Results assume ± 3% nominal voltage at line side of the driver and structures located within 3 feet (1m) of design locations.



SCALE IN FEET 1 : 60
 0' 60' 120'
 ENGINEERED DESIGN By: Cameron Isiminger • File #247083Cr1 • 02-Apr-26

Pole location(s) ⊕ dimensions are relative to 0,0 reference point(s) ⊗



Not to be reproduced in whole or part without the written consent of Musco Sports Lighting, LLC. ©1981, 2026 Musco Sports Lighting, LLC.

ILLUMINATION SUMMARY

Bonney Lake High School BB SO SB

Bonney Lake, WA

Grid Summary	
Name:	PL 1 Cd
Spacing:	30.0' x 10.0'
Height:	5.0' above grade

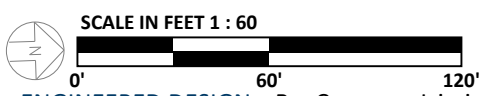
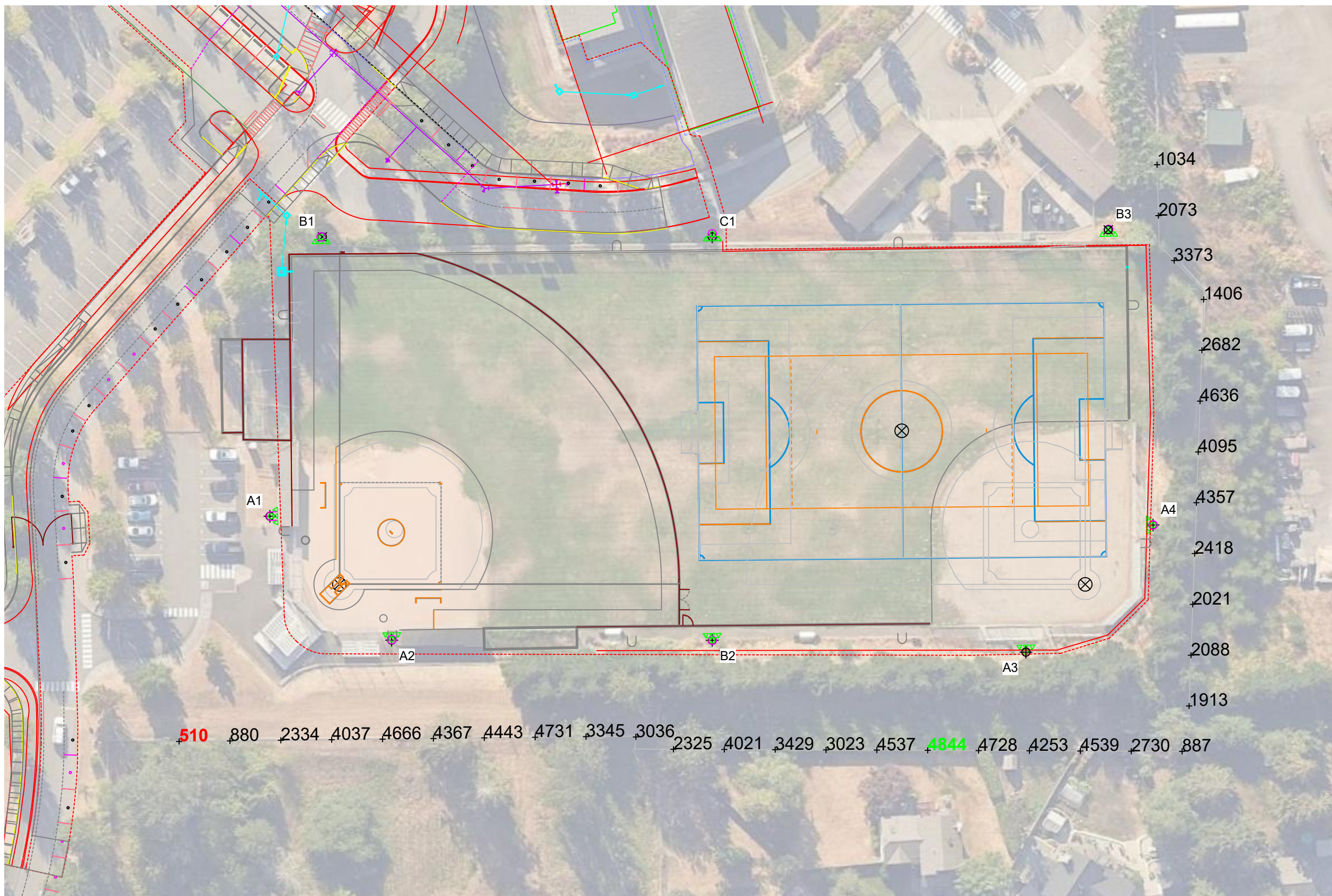
Illumination Summary		MAINTAINED MAX CANDELA (PER FIXTURE)
Entire Grid		
Scan Average:	3144.22	
Maximum:	4844	
Minimum:	510	
No. of Points:	33	
FIXTURE INFORMATION		
Applied Circuits:	A,B,C,D	
No. of Fixtures:	89	
Total Load:	86.80 kW	

Guaranteed Performance: The ILLUMINATION described above is guaranteed per your Musco Warranty document.

Field Measurements: Individual field measurements may vary from computer-calculated predictions.

Electrical System Requirements: Refer to Amperage Draw Chart and/or the "Musco Control System Summary" for electrical sizing.

Installation Requirements: Results assume ± 3% nominal voltage at line side of the driver and structures located within 3 feet (1m) of design locations.



Pole location(s) ⊕ dimensions are relative to 0,0 reference point(s) ⊗



Bonney Lake High School BB SO SB

Bonney Lake, WA

Grid Summary

Name: PL 2
 Spacing: 30.0' x 10.0'
 Height: 3.0' above grade

Illumination Summary

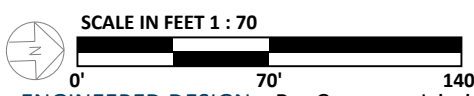
MAINTAINED MAX VERTICAL FOOTCANDLES	
Scan Average:	0.13
Maximum:	1
Minimum:	0
No. of Points:	45
FIXTURE INFORMATION	
Applied Circuits:	A,B,C,D
No. of Fixtures:	89
Total Load:	86.80 kW

Guaranteed Performance: The ILLUMINATION described above is guaranteed per your Musco Warranty document.

Field Measurements: Individual field measurements may vary from computer-calculated predictions.

Electrical System Requirements: Refer to Amperage Draw Chart and/or the "Musco Control System Summary" for electrical sizing.

Installation Requirements: Results assume ± 3% nominal voltage at line side of the driver and structures located within 3 feet (1m) of design locations.



Pole location(s) ⊕ dimensions are relative to 0,0 reference point(s) ⊗



Bonney Lake High School BB SO SB

Bonney Lake, WA

Grid Summary	
Name:	PL 2 Cd
Spacing:	30.0' x 10.0'
Height:	5.0' above grade

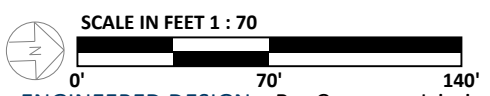
Illumination Summary	
MAINTAINED MAX CANDELA (PER FIXTURE)	
Scan Average:	2072.92
Maximum:	5453
Minimum:	1
No. of Points:	45
FIXTURE INFORMATION	
Applied Circuits:	A,B,C,D
No. of Fixtures:	89
Total Load:	86.80 kW

Guaranteed Performance: The ILLUMINATION described above is guaranteed per your Musco Warranty document.

Field Measurements: Individual field measurements may vary from computer-calculated predictions.

Electrical System Requirements: Refer to Amperage Draw Chart and/or the "Musco Control System Summary" for electrical sizing.

Installation Requirements: Results assume ± 3% nominal voltage at line side of the driver and structures located within 3 feet (1m) of design locations.



Pole location(s) ⊕ dimensions are relative to 0,0 reference point(s) ⊗



Bonney Lake High School BB SO SB

Bonney Lake, WA

Equipment Layout

INCLUDES:

- Baseball
- Soccer
- Softball 1
- Softball 2

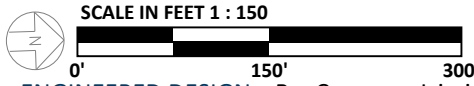
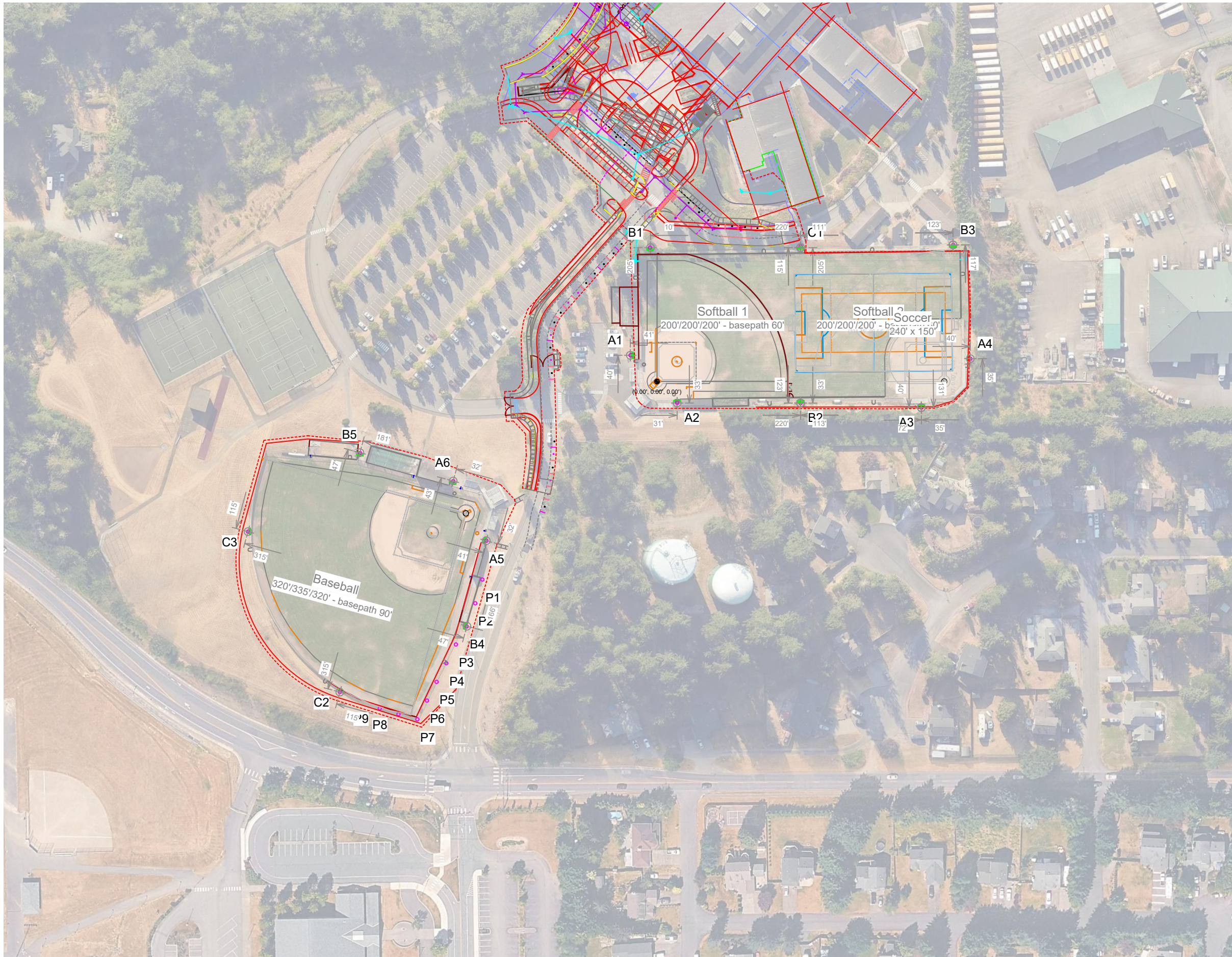
Electrical System Requirements: Refer to Amperage Draw Chart and/or the "Musco Control System Summary" for electrical sizing.

Installation Requirements: Results assume ± 3% nominal voltage at line side of the driver and structures located within 3 feet (1m) of design locations.

Single Fixture Amperage Draw Chart

Driver Specifications (.90 min power factor)	Line Amperage Per Fixture (max draw)						
	208 (60)	220 (60)	240 (60)	277 (60)	347 (60)	380 (60)	480 (60)
Single Phase Voltage	6.9	6.5	6.0	5.2	4.2	3.8	3.0
TLC-LED-1200	6.9	6.5	6.0	5.2	4.2	3.8	3.0
TLC-LED-900	5.2	4.9	4.5	3.9	3.1	2.9	2.3
TLC-BT-575	3.3	3.2	2.9	2.5	2.0	1.8	1.5

*Amp draw based on 100% fixture output, consult design specific datasheet for adjusted amperage draw chart



Pole location(s) ⊕ dimensions are relative to 0,0 reference point(s) ⊗

