

METHACTON SCHOOL DISTRICT



HIGH SCHOOL ADDITIONS AND RENOVATIONS May 2026 Property Committee

11 MAY 2026



SCHRADERGROUP
A HORD COPLAN MACT STUDIO

METHACTON HIGH SCHOOL

Renovations / Additions Schedule



DESIGN DEVELOPMENT (Through August 2026):

- **Design Team Meetings – every 2 weeks**
- **Student Feedback Sessions (6/1 & 6/3)**
- **Parent / Community Feedback Sessions (June & September)**
- **Land Development Approvals**
 - **Zoning Hearing – May 5, 2026 & June 2, 2026**
 - **Worcester Twp Planning Commission & Board of Supervisors – Spring through Fall 2026 (June 25th PC Meeting)**
 - **Montgomery County Conservation District Review (NPDES Permit) – Spring through Fall 2026**
- **Estimating & Value Engineering**
- **School Board, Property Committee & Finance Committee Updates**
- **August Board Meeting (Vote to move into Construction Documents)**

METHACTON HIGH SCHOOL

END USER GROUPS SUMMARY



Performing Arts (4/14)

- 500 seats on lower level of Auditorium
- Ability to at least have partial “Fly” area; Rigging can be more limited
- Projection / Presentation capabilities at back of stage for digital backgrounds
- Concessions/Ticketing: Main ticketing area at the Pool Lobby with a mobile station at the Auditorium & light refreshments sold outside of the Auditorium
- Discussed storage and capacity needs for Band/Orchestra/Choral
- 3-4 small practice rooms
- Provide mirrors at the balcony LGI to use as a dance studio

General Classrooms – Dept. Chairs (4/15)

- Provide printer nooks at classroom wing
- Provide small meeting spaces in the Commons area for specialized student/teacher meetings/support
- Limited casework (shelving) to be provided throughout new classrooms. Can be supplemented with bookshelves through FF&E budget.

METHACTON HIGH SCHOOL



END USER GROUPS SUMMARY

Commons & Library (4/16)

- 2 Classroom spaces are needed (one for 'Library' Class and one for a visiting class)
- Need a variety of space types – for full classroom, smaller groups, and individual quiet reading/research
- Library needs can be supplemented by the Commons space available
- Current Library is used for things like Career Fair, Art Show, etc that will need a new home
- Create an IT Help Desk area (Commons)
- Provide mobile, lower stacks that can be flexible to create the different space types

Life Skills / Family & Consumer Science & Fab Labs (4/20)

- School Store: Walk-up counter with mostly apparel to start, students will learn inventory/stocking & sales/business skills
- Life Skills Apartment: Include Kitchen, Bedroom, Bathroom, Living Room & Dining Room to teach independent living skills
- Fashion Lab: 20 students; Class includes Child Development, Interior Design, and Textile Design. Needs lots of storage.
- Kitchen / Food Lab: Did not meet – 4 student stations are required for up to 20 students with a teacher demonstration area.
- Fab Lab: Need 2 separate spaces – one clean area for technology, one dirty area for light fabrication/machining

METHACTON HIGH SCHOOL

END USER GROUPS SUMMARY



Athletics (4/22)

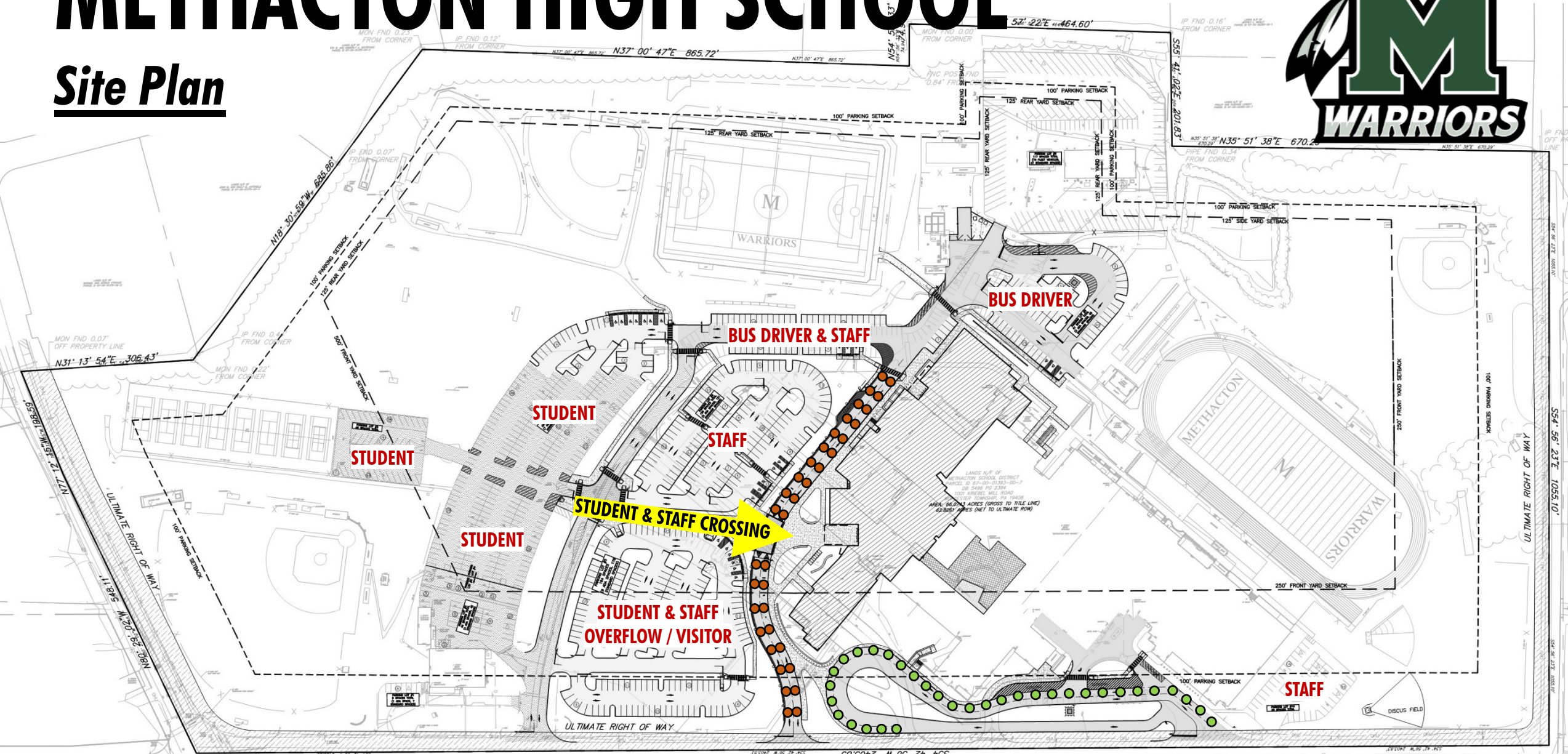
- **POOL**
 - Team is evaluating the type of shell (Myrtha vs concrete with Plaster/Tile), filtration systems, and the viability of an ADA ramp vs. lifts
 - Great feedback on the locker rooms, offices, and storage needs
- **TRAINER:** Provide direct access to the fitness center
- **FITNESS CENTER:** will be used as a PE station
- **TEAM ROOMS:** space for 40 athletes; showers are not used

Administration & Counseling (4/22)

- Security and Attendance to be relocated across the vestibule to allow for better entry sequence & reduced congestion
- Counseling needs a larger waiting area and should be fully separated from any Admin areas
- 'Mental Health Suite' (2nd Floor) does not need a waiting area

METHACTON HIGH SCHOOL

Site Plan



STUDENT ENTRY & EXIT

BUS ENTRY & EXIT

PARENT ENTRY & EXIT

METHACTON HIGH SCHOOL



METHACTON HIGH SCHOOL



METHACTON HIGH SCHOOL



METHACTON HIGH SCHOOL

New Main Entry



METHACTON HIGH SCHOOL

New Main Entry



METHACTON HIGH SCHOOL

New Main Entry

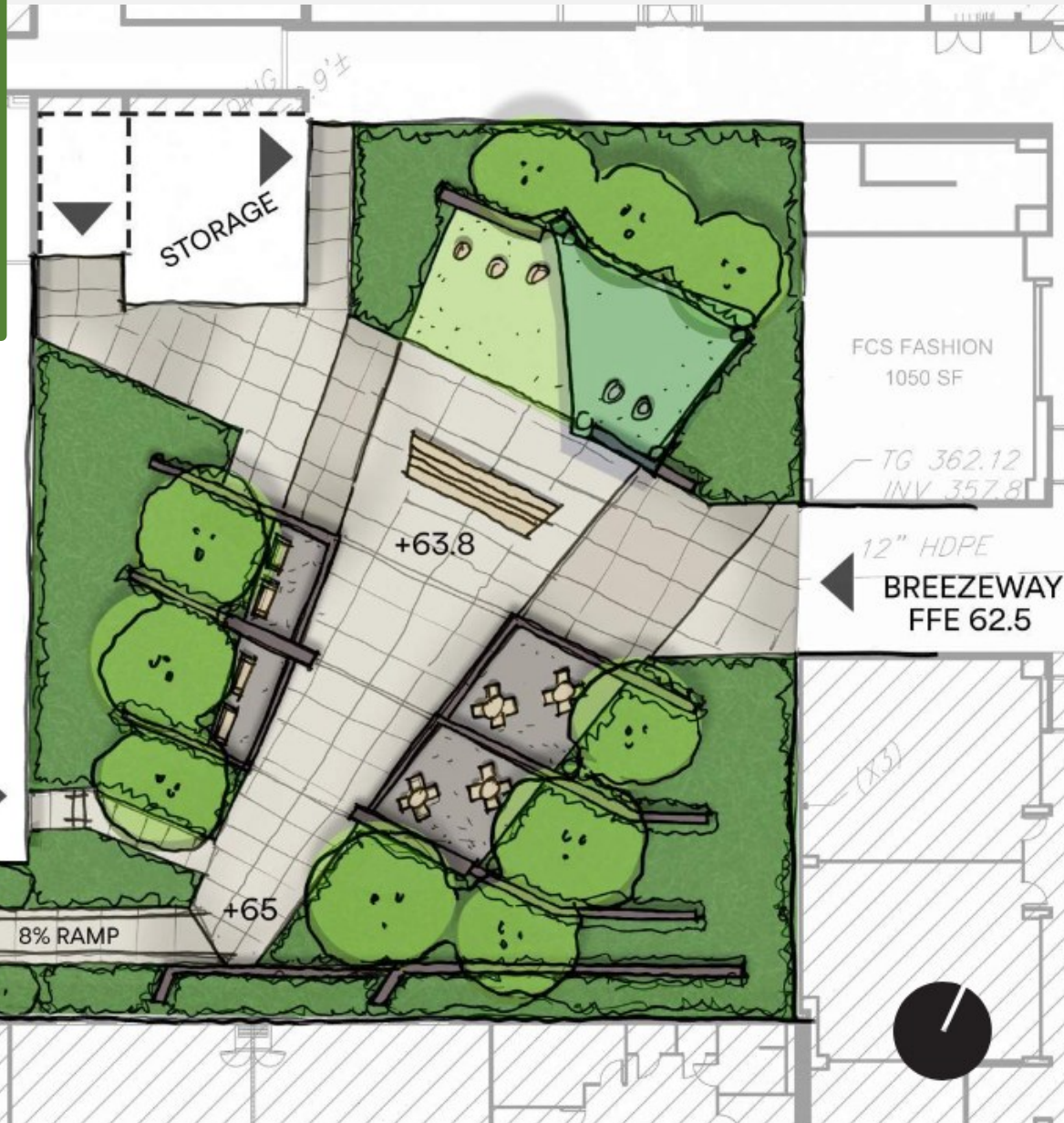
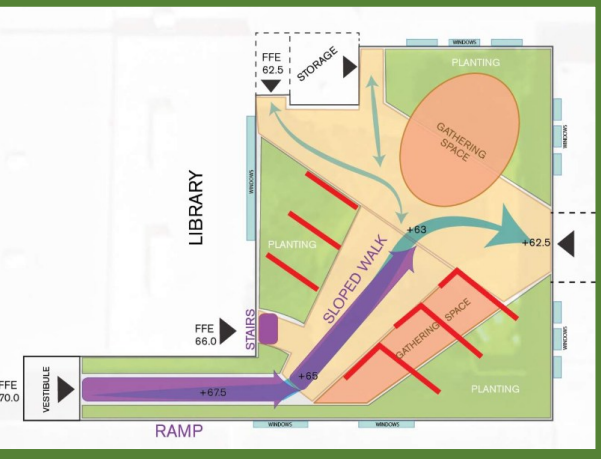


METHACTON HIGH SCHOOL

New Commons



METHACTON HIGH SCHOOL - COURTYARD



METHACTON HIGH SCHOOL COURTYARD



METHACTON HIGH SCHOOL COURTYARD



METHACTON HIGH SCHOOL

REMAINING SCHEDULE



DESIGN DEVELOPMENT (February – August 2026):

- Board Action to approve CD Phase Fees (~\$1,450,000) – Aug 25, 2026

CONSTRUCTION DOCUMENTATION (August 2026 – January 2027):

- Board Action to approve Act 34 Hearing Resolution / Advertisement – tentative Sept 22, 2026
- Act 34 Hearing – tentative Oct 20, 2026
- Board Action to approve Advertisement for Bidding – tentative Jan 26, 2027
 - Bidding Phase Design Fees (~\$280,000)

BIDDING (February – April 2027):

- Receive Bids – tentatively mid-March 2027
- Board Action to approve Bids – April 2027 Board Action Meeting (approx. \$90M construction value)
 - Construction Design Fees (~\$2,400,000)

CONSTRUCTION (June 2027 – July 2030)



THANK YOU!

QUESTIONS?

11 MAY 2026

