

Newport-Mesa Unified School District
COMMUNITY SCHOOLS
Enriching Minds|Leading Hearts|Succeeding Together

Community Schools District Advisory

May 13, 2026

Welcome!



Agenda

- Welcome
- School Assets
- School Site Progress
- Next Steps
- Celebration



Newport-Mesa Unified School District
COMMUNITY SCHOOLS
Enriching Minds | Leading Hearts | Succeeding Together



ALL STUDENTS ARE
All OUR Students
SEEN, HEARD, SUPPORTED AND SAFE

What is a Community School?



You're at a summer BBQ and a friend asks, "I heard your kid goes to a Community School. What's the big deal? Isn't it just a regular school?"

How do you respond? Beyond the classroom, what makes your Community School special?

Write down your thoughts on a post-it. Share with your neighbor and add your post-it to your school's chart.

Community Schools District Advisory



This meeting is a space for families, school staff, and community members to share ideas, give feedback, and help shape the direction of the Community Schools programs.

By working as a team, we can create schools where all students and families feel *seen, heard, supported, and safe.*

Your voice matters!

Community Schools District Advisory



Advisory Group Roles & Responsibilities

- Member roles
 - Provide feedback
 - Identify community needs
 - Help brainstorm solutions and resources

January 2026 - Asset Mapping



Asset mapping - helps name the **strengths of a community**, like people, places, programs, and services.

For example: Save Our Youth (SOY), Farmers' Markets, Health Clinic, Share Ourselves Health Clinic, C.A.R.E. Club Afterschool Program, etc.

What great things are already in our neighborhoods?

Together we can create something we can share with others.

Community Assets*

Food Support	Health Services	Mental Health Services	Schoolwork Help Academic Support	Housing Support	Legal / Immigration Support	Childcare / Preschool Programs	Transportation Help	Other
<ul style="list-style-type: none"> • Mercado Gratuito • Feed the People • Share Ourselves (SOS) Food Pantry • Second Harvest Food Bank • Healthy Families • Chicken Coop • OC Rescue • Someone Cares Soup Kitchen • San Joaquin Church 	<ul style="list-style-type: none"> • Families Together of OC • Melinda Hoag • Share Ourselves (SOS) Clinic • Celebrating Life Community Health Center • Kaiser • OC Health Care Agency • UCI 	<ul style="list-style-type: none"> • Melinda Hoag • Share Ourselves (SOS) • So.Coast Comm. Services • Turning Point Center • Western Youth Services • Didi Hirsch Mental Health Services • School Counselor 	<ul style="list-style-type: none"> • SOY • Phonetics • Kumon • CARE Club • ROCKS • BGC • Girls Inc. • KidWorks • CM Public Library • Shalimar Learning Center • Harmony USD classes • OCC community classes • Project Hope Alliance • YMCA 	<ul style="list-style-type: none"> • Project Hope Alliance (PHA) • Families Forward • OC United Way • 211 Referrals 	<ul style="list-style-type: none"> • Camino Immigration Services • CARECEN • Public Law Center • OC Mexican Consulado • Share Ourselves (SOS) • SOY • Melinda Hoag 	<ul style="list-style-type: none"> • NMUSD Preschools • Learning Link • Head Start OC / Head Start • Catalyst Kids • Kiddie Academy • CARE Club/ Expanded Learning on School Campus • YMCA • ROCKS 	<ul style="list-style-type: none"> • City of Costa Mesa Shuttle • Let's Go Costa Mesa • Costa Mesa Circuit • OCTA bus passes • School bus • Bus Pass App • CM Rideshare 	<ul style="list-style-type: none"> • ELAC • Disciplina Positiva

*Results are based on parent/caregiver Community Schools Asset Mapping Survey from April 2026



Community Assets

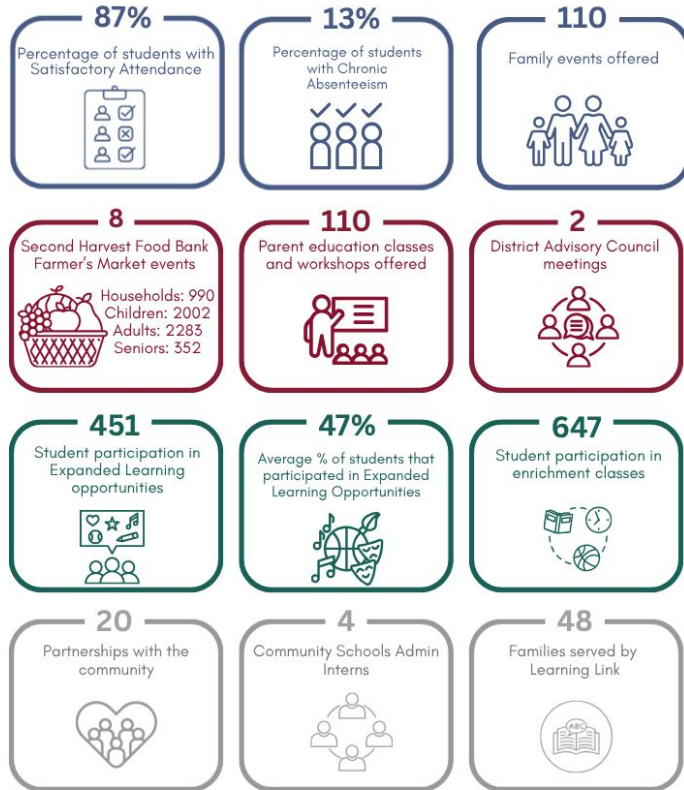
Of all the assets in the community,
YOU are our greatest asset.



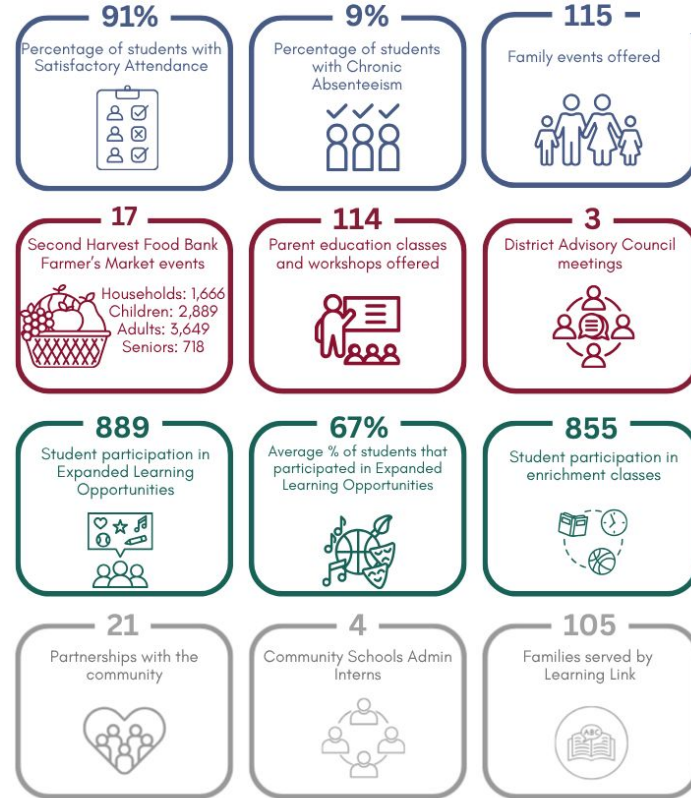
Community Schools Impact



OUR COMMUNITY SCHOOLS IMPACT: YEAR 1 School Year: 2024-2025



OUR COMMUNITY SCHOOLS IMPACT YEAR 2 School Year: 2025-2026



*Data collected from all four Community School sites (Pomona, Rea, Whittier, & Wilson) as of 5/12/26



Site Progress

***We are in the second year of our five year grant.
How are we doing? Are we making a difference?***

*As you listen to your school's progress on the three goals,
consider:*

***What are our successes?
What suggestions do you have?
What should we adapt?***

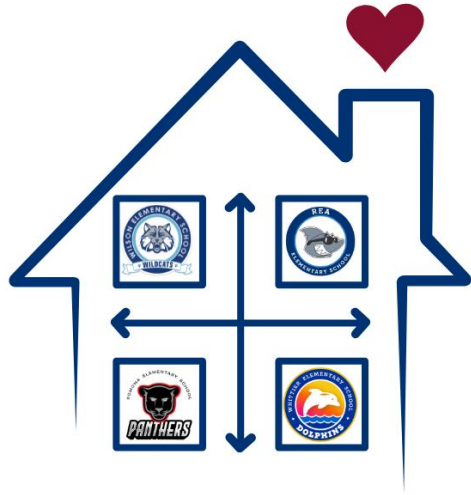
START - STOP - ADAPT

Looking Ahead to Year 3...



Newport-Mesa Unified School District
COMMUNITY SCHOOLS
Enriching Minds | Leading Hearts | Succeeding Together

- 3 Farmer's Markets
- *Peer Assistance Leadership (PAL) Youth Leadership Development*
- Learning Link
- Diverse Enrichment Experiences
- Parenting Classes
- Family Academic Mornings
- AVID Family Nights
- Parent Leadership Academy - Exit Ticket



Newport-Mesa Unified School District
COMMUNITY SCHOOLS
Enriching Minds|Leading Hearts|Succeeding Together

Thank YOU
Community
School
Assets!