



EDUCATIONAL  
TOURS

The trip of a lifetime awaits

Nice to meet you



HELLO!

**My name is Beth Miller**

**A little about me...**

- Kaneland High School Special Education Teacher
- Girls Head Tennis Coach
- I live in Maple Park – both my children went to Kaneland
- I LOVE Halloween
- I am a DIE-HARD BEARS FAN



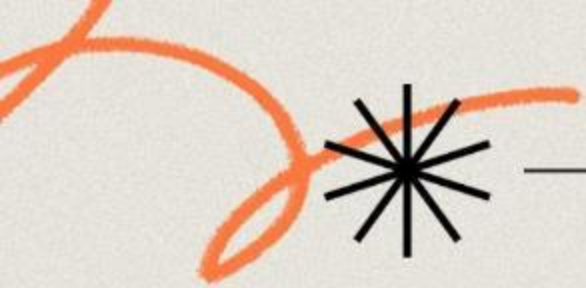
# Kaneland Travel Team

**Organizer:**

**Beth Miller ([beth.miller@kaneland.org](mailto:beth.miller@kaneland.org)),**

**Additional Chaperones:**

**Lori Shroka, and Sam O'Neill**



# Journeys that travel with them for the rest of their lives



**94%** of EF travelers say the tour expanded their knowledge of the world

**84%** felt the tour helped them grow as a person

**84%** Felt inspired by their tour

# TOUR DATES

The details

Dates to block off

May 27, 2027

May 30–Jun 8

Jun 11, 2027

Earliest departure

Requested dates

Latest return

**Initial flexibility helps build the best on-the-ground experience for our group**



Dates will be confirmed 2-3 months prior to departure

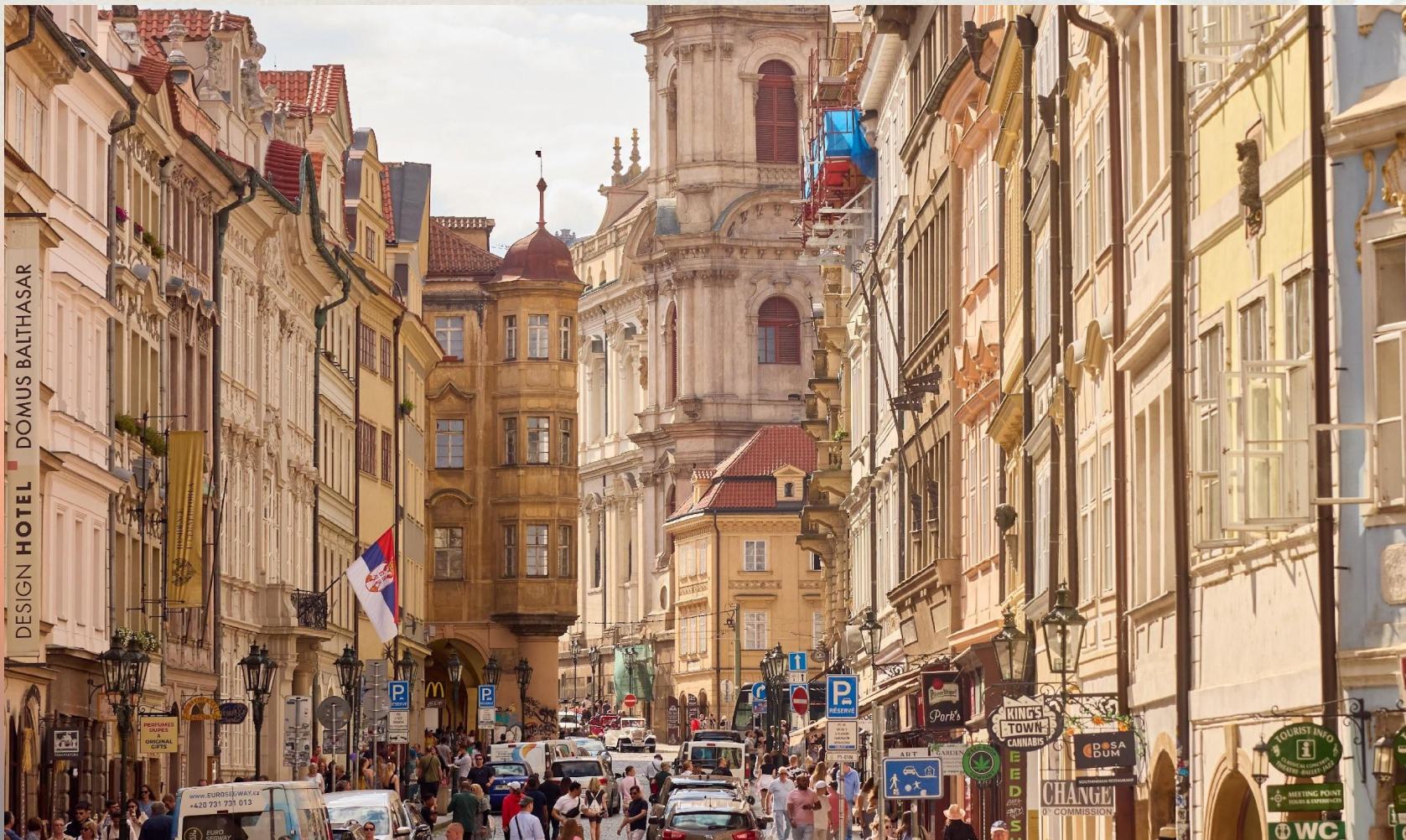
GET READY GET READY GET READY GET READY GET READY GET READY GET READY GET READY GET READY



**We're going to**



# Eastern Europe



10 DAYS

# Berlin, Prague, Krakow & Budapest




# THE HIGHLIGHTS

Our trip

Meet your Tour Director at the airport in Berlin. Poised at the cutting edge of European culture, this German capital has been transformed since the Berlin Wall fell in 1989



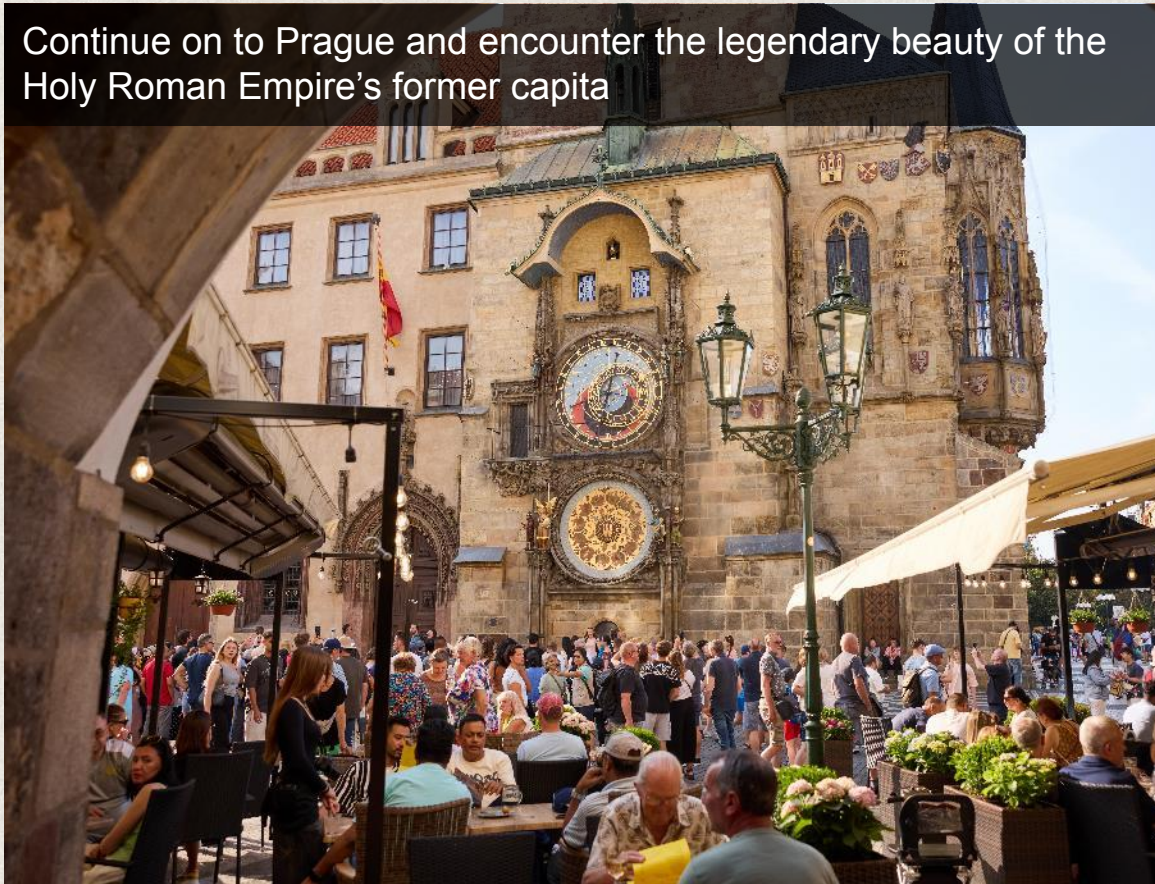
Take an expert guided tour of Berlin and see The Brandenburg Gate

 Consult our tour page for full details


# THE HIGHLIGHTS

Our trip

Continue on to Prague and encounter the legendary beauty of the Holy Roman Empire's former capita



Travel to Krakow, the only major Polish city to escape devastation during World War II, leaving the beautiful architecture of its Old Town intact

 Consult our tour page for full details


# THE HIGHLIGHTS

Our trip

You'll also take a somber visit to the concentration camps at Auschwitz and Birkenau



Explore Heroes' Square and City Park's Vajdahunyad Castle

 Consult our tour page for full details

# Our dedicated Tour Director leads the way

- Meets our group at the airport and stays with us until we depart
- Expertly trained guides who help navigate the local customs, culture & language
- Extensive knowledge of our destination
- Manage everything from hotel check-in to facilitating meals to handling tickets
- A teacher at heart who will deliver engaging commentary and facilitate hands-on learning



# WHAT'S INCLUDED

The details



**Full-time Tour Director**  
who's with us every  
step of the way



**All transportation,**  
including round-trip  
flights



**Breakfast & dinner**  
included daily  
featuring regional  
cuisine



**Overnight stays in**  
**hotels** with private  
bathrooms



**Expert-led**  
**sightseeing tours** in  
iconic destinations



**Tickets** to  
bucket-list  
experiences and  
attractions



The option for  
students to receive  
**academic credit**



**Experiential**  
**learning** that  
expands worldviews



**Traveler support**  
and resources



24 hour  
**emergency**  
**assistance**

# WHAT YOU'RE RESPONSIBLE FOR

The details



**Passports** (and any necessary visas)



**Baggage fees** (for checked luggage)



**Tips** (for your Tour Director, bus drivers, and local guides)



**Snacks and some meals**



**Rooming upgrades**



**PROGRAM COST** \_\_\_\_\_

The details

**\$95 to enroll on our travel-based learning program. Customize your payments.**

**\$180 BI-WEEKLY\***

**\$359 MONTHLY\***

12 monthly payments

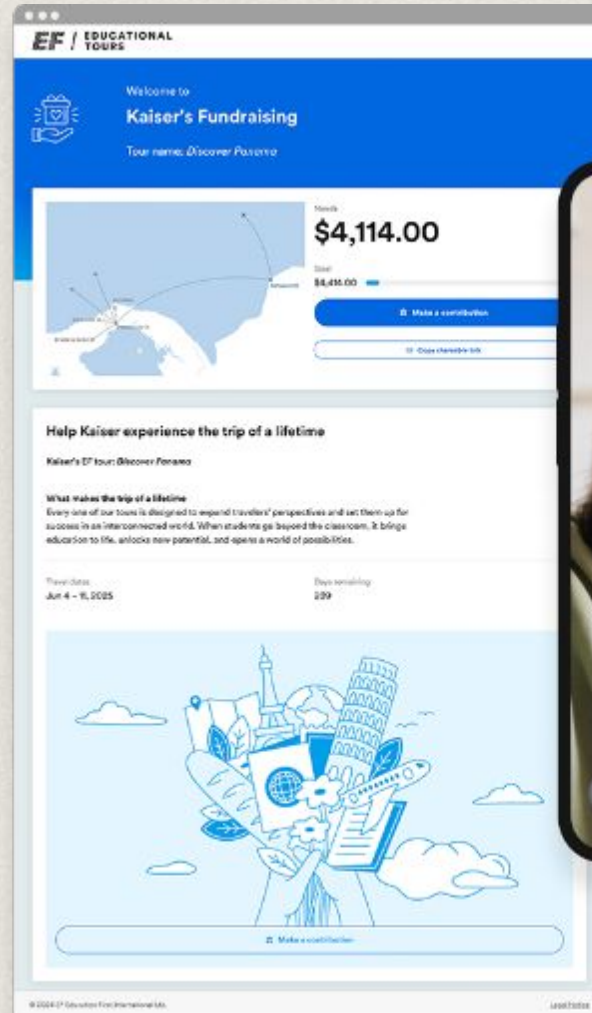
**\$4,399\*** total cost.

Plus, you can cancel for any reason up to 7 days after enrollment for a full refund

---

\*Prices includes \$95 enrollment fee – Contact EF’s Traveler Support Team for additional payment options

Personalized fundraising page to share with family and friends



**Global Citizens Scholarship** gives 100 students a year \$1,000 off their EF tour

Complete a short form and submit a 2-3 minute video to apply

# BOOK WITH CONFIDENCE

## The details



This is already included in our tour!

+ \$400

- COVERAGE
- Program cancellation
- Program interruption
- Illness & accident
- Baggage & property
- Flight delay
- Emergency evacuation

### GLOBAL TRAVEL PROTECTION

Any reason up to one year before departure, full refund less \$95.



### GLOBAL TRAVEL PROTECTION PLUS

Any reason up to 24 hours before departure for a full refund, less \$95 and the cost of the protection plan





# EF leads the way in travel-based learning

- Global education organization accredited by the same organizations as most U.S. schools
- 60 years of experience and success
- Experts in providing immersive experiences that enhance classroom learning and unlock personal growth





# One educational tour. Growth that lasts a lifetime.

- Unlike other trips, an EF tour is a unique experience where learning meets life
- Every EF itinerary includes hands-on, immersive learning that leads to self-discovery and prepares travelers for the future
- The EF educational philosophy helps students build essential skills like empathy, resilience, independence, and confidence
- It all adds up to ah-ha! moments of growth for your student

# From travel to transcript



- As an accredited institution, EF offers academic courses that connect directly to your student's tour experience
- Students can earn The EF | Nobel Prize Museum Global Citizen Certificate and/or high school credit (**offered at no additional cost**)
- They can also earn 3 college credits for just \$550 – a fraction of typical tuition
- Each course has engaging assignments before, during, and after tour – like journaling abroad or filming friends trying local foods
- EF will share more details after enrollment

# EF puts safety first. And second. And third.

- **Safety & Incident Response Team** available 24/7, 365 days a year and trained to react quickly if travelers need help
- EF has **unmatched worldwide presence**, including staff on the ground in over 115 countries
- **Mandatory safety training** for teachers and **background checks** for adult travelers
- **Best-in-the-industry experience** means EF is ready, whatever happens
- **Peace of Mind Program** is built into every tour and allows groups to change dates and destinations



*The navy dots are every place EF has an office!*



SUPPORT

---

Meet EF

# EF Traveler Support is always here to help

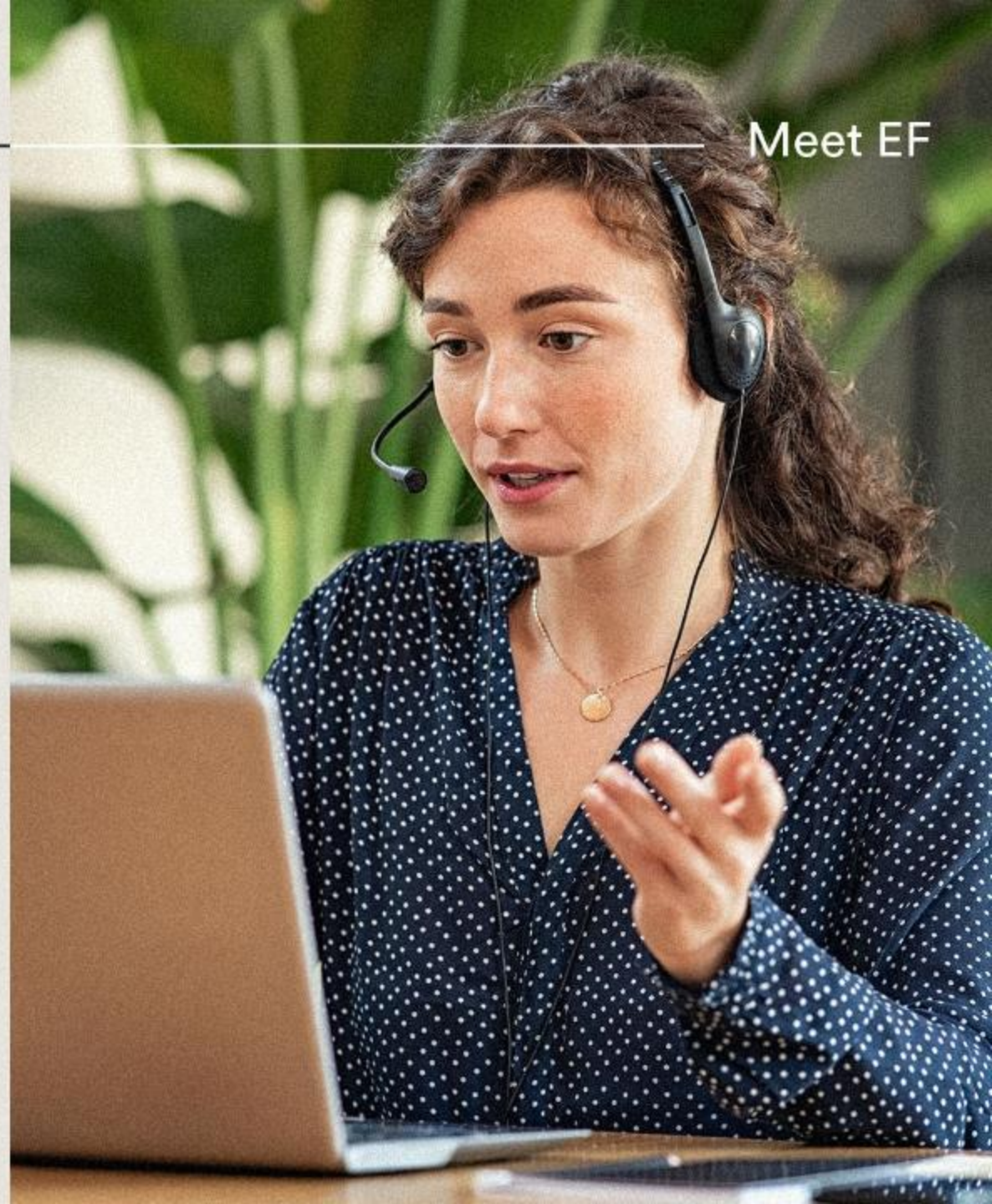
This team is your go-to resource for everything about our trip. Reach out for one-on-one support.

---

**Call** 800-665-5364

**Email or chat**

[eftours.com/contact-us](https://eftours.com/contact-us)



# Enrollment is open!

Secure your spot!! Enjoy Risk-Free Enrollment!!

**20**

interested travelers

**10**

guaranteed spots available



Visit [eftours.com/ 2896784NR](https://eftours.com/2896784NR) to get more info & sign up.



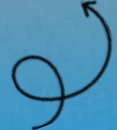
# Questions?

**Contact: Beth Miller**  
**[beth.miller@kaneland.org](mailto:beth.miller@kaneland.org)**

EF is here to answer any what-ifs or how-tos.

Contact Traveler Support at  
**800-665-5364**  
or  
**[eftours.com/contact-us](https://eftours.com/contact-us)**



Ready to enroll?   
**[eftours.com/2896784NR](https://eftours.com/2896784NR)**