

# ***Mercy January Update***

**65 Prime+ by Mercy Primary Care:** It's the next generation of care. You'll enjoy longer visits, more personalized attention, and a care-navigator to walk you through your healthcare journey.

***Join us for our grand opening on January 28.***

**We are expanding:** It's part of our commitment to give everyone in our community access to the care they need.

***Join us for our grand opening of Mercy Clinic Primary Care – Dixieland on February 3.***

**Start the New Year with the Right Care:** Getting started on your New Year's Resolutions? Let us help with navigating health care for your family.

***Meet Your New Providers!***

**Mercy Orthopedic Care:** Whether you tweaked your knee playing with the grandkids or twisted your ankle taking down Christmas lights – we have you covered with Mercy Orthopedics Walk-in Clinics.

[Orthopedic Walk-In Care | Mercy](#)

**Partner with Mercy:** Helping local Employers Navigate Care. Mercy believes that access care should be easy, your Mercy Business Development Manager is your **local resource**.



## You're Invited

To celebrate the opening of

# 65Prime+

by Mercy Primary Care

## Blessing and Ribbon Cutting 65 Prime+ in Rogers

**January 28 | Noon**

**65 Prime+** - Rogers Financial Parkway  
3801 W. Financial Pkwy. | Ste. 102 | Rogers

### **It's the next generation of care:**

65 Prime+ is specially designed for people 65 and over. You'll enjoy longer visits, more personalized attention and a care navigator to make check-ins, visits and follow-ups simple and convenient.

*Please join us for prayer, tours and light refreshments as we open the doors to 65 Prime+.*

## What is Mercy 65 Prime+?

- Mercy 65 Prime+ is the new primary care practice for Medicare beneficiaries. It's a primary care practice specially designed to meet the unique needs of Medicare patients.

## How is Mercy 65 Prime+ different than other medical practices?

- 65 Prime+ patients will get extended visit times to make sure their concerns can be fully addressed without the patient or doctor feeling hurried.
- They'll be seen more frequently to keep chronic conditions like high blood pressure, diabetes and heart disease under control.

## How easy will it be to get an appointment at Mercy 65 Prime+?

- Patients will be able to get a routine appointment within a week.
- For urgent concerns or conditions, they will be scheduled within a business day.

## Who is the care team for Mercy 65 Prime+?

- The foundation of the care team is a Mercy primary care physician solely dedicated to caring for Medicare patients.
- Each physician is supported by a registered nurse and a care navigator.
- The nurse provides clinical support to patients during clinic visits and care between visits.
- The care navigator coordinates visit scheduling, registration, referrals and insurance support.

## What patients are eligible for care at Mercy 65 Prime+?

- Mercy 65 Prime+ will care for any patient in a Medicare Advantage plan currently accepted by Mercy.
- All patients with traditional Medicare are also eligible for this care.

## What services are available at Mercy 65 Prime+?

- Our practices provide complete primary care, including all wellness care, chronic condition management and urgent care.
- Lab services are readily available in or near the practice.
- Diagnostic testing such as imaging or cardiac testing happens at existing Mercy facilities.
- Patients with a Mercy specialist or other specialist will continue their care with them.

## Is Mercy 65 Prime+ the same as geriatrics?

- No; geriatrics typically involves a one-time or occasional consultation visit for older adults. Mercy 65 Prime+ provides continuous primary care for our patients.

## Is Mercy 65 Prime+ the same as internal medicine?

- Our physicians may be trained in either internal medicine or family medicine, but all our physicians are experienced in and passionate about caring for older adults.

# Mercy Clinic Primary Care – Rogers

4502 S. Dixieland



Join us for a special day.

You're invited to celebrate the opening and dedication of our newest clinic:

Mercy Clinic Primary Care - Rogers 4502 S. Dixieland

It's part of our commitment to give everyone in our community access to the care they need.

**Monday, February 3, 2025 | 10 a.m.**

We will celebrate at the Rogers location:  
Mercy Clinic Primary Care  
4502 S. Dixieland Rd. | Rogers, AR 72758

Mercy 

Mercy 

# Do I Really Need the ER?

Mercy has options that can save you wait time and medical costs.

In case of emergency, call 911 immediately.



## PRIMARY CARE

### VIRTUAL AND IN-PERSON VISITS

Start here for most medical concerns, wellness care and chronic condition management.

#### GOOD FOR:

- Annual physicals
- Routine screenings
- Vaccines
- Sprains and strains
- Chronic conditions
- Medicine refills
- Colds and flu
- Asthma
- Anxiety and depression

#### MERCY ON CALL

Free after-hours advice on what to do about your medical concern or condition. Providers always on call. Available only to patients with a Mercy primary care provider.

#### MERCY EXPRESS CARE

Online digital care for ages 3+ with a MyMercy account. Answer a few questions and get a diagnosis, treatment plan and prescription, if needed.



## WALK-IN CLINIC/ URGENT CARE

### VIRTUAL AND IN-PERSON VISITS

Immediate care for minor illness or injury.

#### GOOD FOR:

- Colds and flu
- Minor cuts and burns
- Sprains and strains
- Cuts requiring stitches
- Broken bones
- Concussions
- Vomiting and diarrhea



## EMERGENCY ROOM

The best place for serious medical conditions.

#### GOOD FOR:

- Fever in a child less than 3 months old
- Chest pain
- Shortness of breath
- Sudden numbness, weakness or speech difficulty
- Severe belly pain
- Coughing or vomiting blood
- Uncontrolled bleeding
- Mental health crisis

Scan here to find and schedule care online or visit [mercy.net/RightCare](https://mercy.net/RightCare)



Mercy 

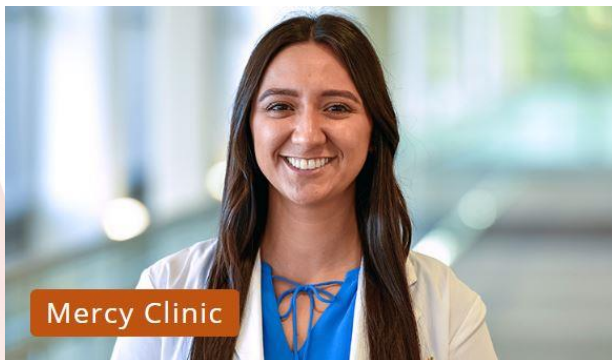
# Mercy Primary Care Providers Make Staying Healthy Easier

[Primary Care](#) | [Family & Internal Medicine Services](#) | [Mercy](#)



**Dr. Adam Angel**  
Internal Medicine  
Mercy Clinic Internal Medicine  
– 52<sup>nd</sup> Street

[Adam Jackson Angel, MD | Internal Medicine | Rogers, AR | Mercy](#)



**Dr. Adriana Rivera**  
Family Medicine  
Mercy Clinic Primary Care – I  
Street

[Adriana Rivera, MD | Family Medicine | Bentonville, AR | Mercy](#)



**Dr. Alexys Marrufo**  
Pediatrics  
Mercy Clinic Pediatrics – Lowell

[Alexys Nicole Marrufo, DO | Pediatric | Lowell, AR | Mercy](#)



# Walk in. Move on.

## Mercy Orthopedic Walk-in Care

When your child's softball injury throws a curve in your busy day, Dad tweaks his running knee, or Grandma takes a misstep on the stairs, Mercy has you covered.

### **Just walk in to a select Mercy clinic.**

Our orthopedic experts are waiting with the experience and technology to diagnose and treat your injury — without the wait. They'll help relieve the pain and get you on the road to recovery.

### **Walk-in for these injuries:**

- Wrists
- Elbows
- Hips
- Legs
- Feet
- Hands
- Shoulders
- Knees
- Ankles



Scan to find your nearest Mercy walk-in clinic and hold your place for care. Or visit [mercy.net/WalkInRelief](https://mercy.net/WalkInRelief)



## Helping local Employers Navigate Care

Mercy Business Development Managers are here to help ease access to care by coming alongside employers and human resource departments to enhance awareness of healthcare options and mitigate barriers that could affect employee health.

### Examples of how a Mercy Business Development Manager can assist:

- Help your employees navigate the Mercy Health System.
- Help resolve issues like billing and scheduling.
- Enhance your current health and wellness programming with on-site health education and resources.
- Participate in health fairs and open enrollments.
- On-site support to connect your employees to primary care providers.
- Keep you and your employees up to date on new services and specialties.

Mercy believes that accessing care should be easy, your Mercy Business Development Manager is your **local resource**.

### Mercy Health

Kiley Jennings

Manager Business Development – Arkansas/ Oklahoma

Kiley.Jennings@Mercy.Net

Mobile: 816-752-4775

