



NPS Elementary School Redistricting

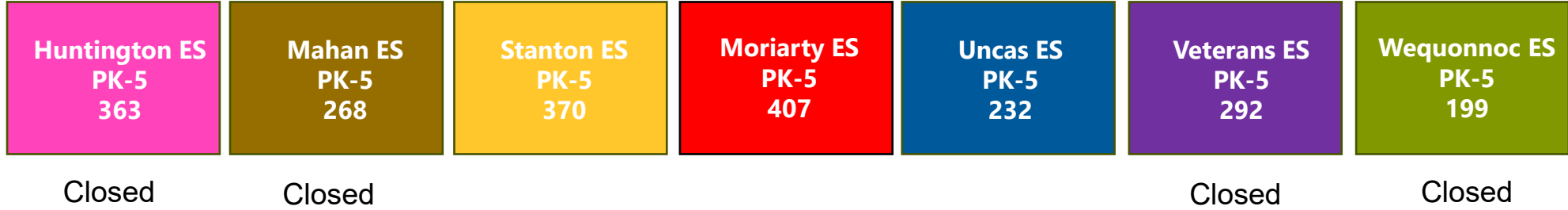
Elementary Redistricting Plan

May 6th, 2026

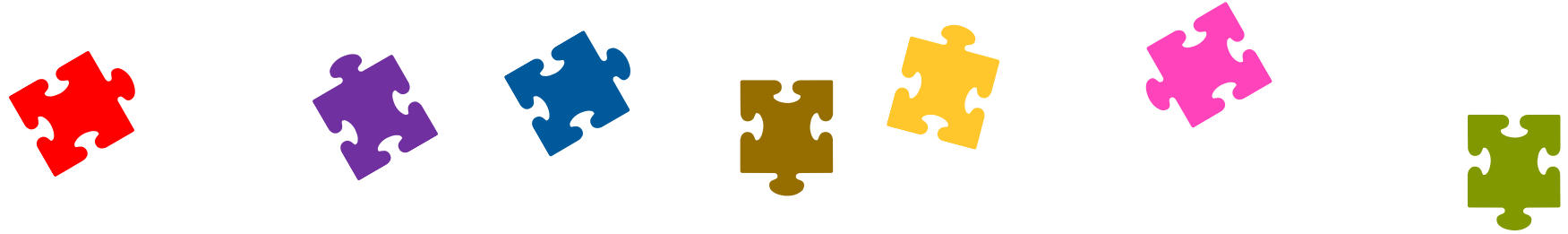


ES Facility Construction Program

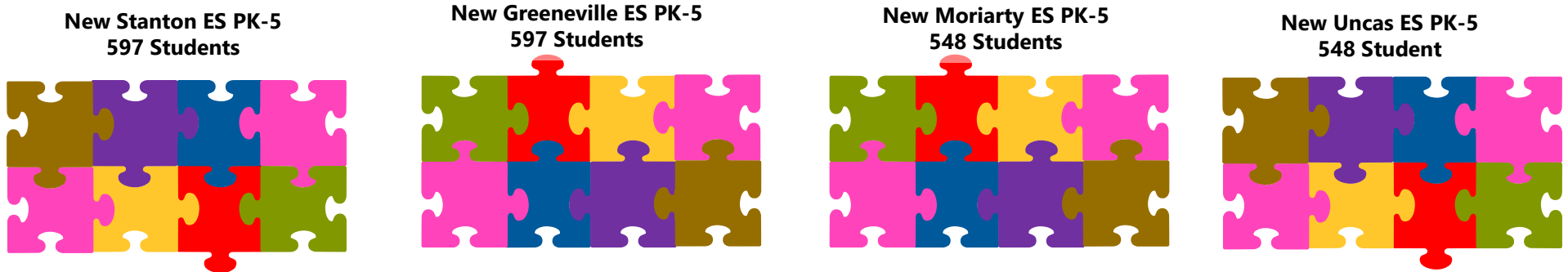
Current 7 ES Alignment



Redistricting Plan in Place for 2027-28 SY



Future 4 ES Alignment





"Big Picture" Timeline & Process

Spring – Summer 2025

- Developed Redistricting Scenarios to align enrollment with design capacity for each school, while providing headroom for sustainable operations.
- Developed enrollment projections for each scenario to understand enrollment trajectory for the foreseeable future.
- Evaluated projected facility utilization and school diversity impacts
- Reviewed each scenario with NPS Transportation Team to understand impacts and efficiency.

Fall - Spring 2026

- Internal district meetings to review scenarios and receive feedback from NPS.
- Reviewed initial redistricting scenarios and developed two additional scenarios based on feedback.
- Launch on Online Redistricting Map Viewer
- Field community questions and feedback through dedicated email address. redistrict@norwichpublicschools.org

Spring– Fall 2026

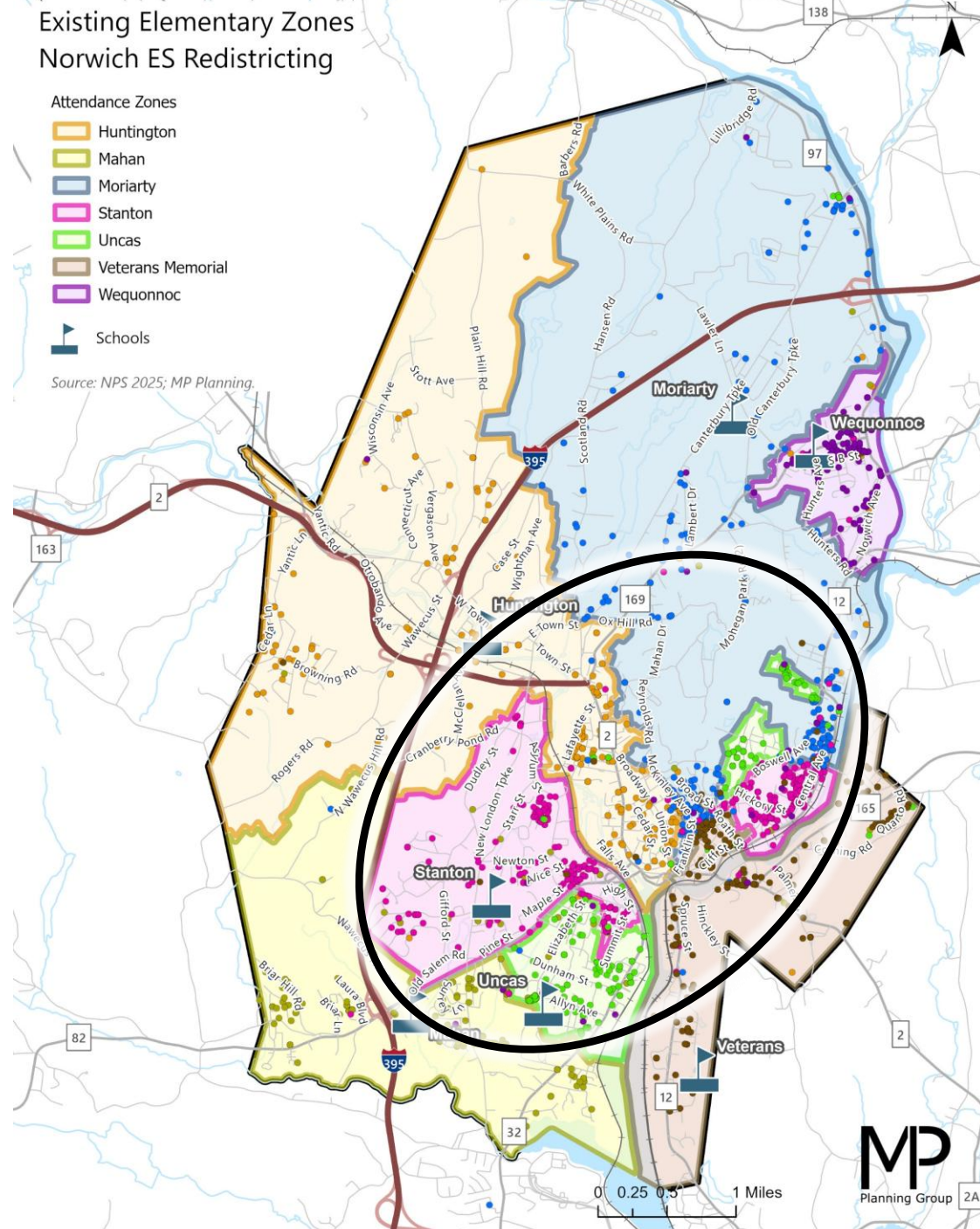
- **Present redistricting plan to BOE in May 2026.**
- **BOE to Adopt Redistricting Plan Fall 2026.**
- Redistricting Implementation Planning
- Operations Planning
 - Staff Considerations & assignments
 - Programming
 - Transportation Routing

Summer- Fall 2027

- **Hunting, Mahan, Veterans Memorial, & Wequonnoc elementary schools close at the end of 2026-27 School Year**
- Summer 2027, Mobilization and move into new elementary schools
- **Fall 2027, New Schools at Greeneville, Moriarty, Stanton and Uncas open for the start of the 2027-28 school with redistricting boundaries**

Existing ES

- 7 ES alignment with enrollment ranging from roughly 200-400 students.
- ES are fed by contiguous and non-contiguous (satellite) zoned areas that are likely due to historic enrollment balancing efforts.





Enrollment Projections

Norwich Public Schools, Medium Enrollment Projections by Grade: 2025-26 to 2035-36

| School Year | Birth Year | Births | K | 1 | 2 | 3 | 4 | 5 | 6 | 7 | 8 | PK | K-5 Total | PK-5 Total | 6-8 Total | K-8 Total | PK-8 Total |
|-------------|------------|--------|-----|-----|-----|-----|-----|-----|-----|-----|-----|-----|-----------|------------|-----------|-----------|------------|
| 2025-26 | 2020 | 415 | 305 | 251 | 308 | 343 | 344 | 327 | 333 | 344 | 388 | 332 | 1,878 | 2,210 | 1,065 | 2,943 | 3,275 |
| 2026-27 | 2021 | 406 | 297 | 323 | 259 | 311 | 346 | 340 | 314 | 335 | 357 | 332 | 1,876 | 2,208 | 1,006 | 2,882 | 3,214 |
| 2027-28 | 2022 | 469 | 343 | 315 | 333 | 261 | 313 | 342 | 326 | 316 | 348 | 332 | 1,907 | 2,239 | 990 | 2,897 | 3,229 |
| 2028-29 | 2023 | 438 | 320 | 364 | 324 | 336 | 263 | 309 | 328 | 328 | 328 | 332 | 1,916 | 2,248 | 984 | 2,900 | 3,232 |
| 2029-30 | 2024 | 417 | 305 | 339 | 375 | 327 | 339 | 260 | 297 | 330 | 341 | 332 | 1,945 | 2,277 | 968 | 2,913 | 3,245 |
| 2030-31 | 2025 | 479 | 350 | 323 | 349 | 378 | 330 | 335 | 250 | 298 | 343 | 332 | 2,065 | 2,397 | 891 | 2,956 | 3,288 |
| 2031-32 | 2026 | 442 | 323 | 371 | 333 | 352 | 381 | 326 | 322 | 251 | 310 | 332 | 2,086 | 2,418 | 883 | 2,969 | 3,301 |
| 2032-33 | 2027 | 449 | 328 | 342 | 382 | 336 | 355 | 376 | 313 | 324 | 261 | 332 | 2,119 | 2,451 | 898 | 3,017 | 3,349 |
| 2033-34 | 2028 | 445 | 325 | 348 | 352 | 385 | 339 | 351 | 361 | 315 | 337 | 332 | 2,100 | 2,432 | 1,013 | 3,113 | 3,445 |
| 2034-35 | 2029 | 446 | 326 | 345 | 358 | 355 | 388 | 335 | 337 | 363 | 327 | 332 | 2,107 | 2,439 | 1,027 | 3,134 | 3,466 |
| 2035-36 | 2030 | 452 | 330 | 346 | 355 | 361 | 358 | 383 | 322 | 339 | 377 | 332 | 2,133 | 2,465 | 1,038 | 3,171 | 3,503 |

| | | | | | |
|--------------------------|--------------|--------------|--------------|--------------|--------------|
| 1st 5-Year Change | 10.0% | 8.5% | -16.3% | 0.4% | 0.4% |
| 2nd 5-Year Change | 3.3% | 2.8% | 16.5% | 7.3% | 6.5% |
| 10-Year Change | 13.6% | 11.5% | -2.5% | 7.7% | 7.0% |
| Max | 2,133 | 2,465 | 1,038 | 3,171 | 3,503 |

- Projections refreshed and revised upwards based on updated birth data. Projections include Oct. 1st 2026 enrollment.



Elementary School Capacities

- The New Stanton and Greeneville ES's have a have a design enrollment of **597 PK-5 Students** with the following in each school (per the Ed. Spec.):
 - 5 PK Classrooms
 - 4 Classrooms per grade for K- 5th grade totaling 24 grade level academic instructional rooms.
 - 5 Self-contained classrooms to support districtwide programs.
- The New Moriarty and Uncas ES's have a have a design enrollment of **548 students PK-5 Students** with the following in each school (per Ed. Spec.):
 - 5 PK Classrooms
 - 4 Classrooms per grade for K- 5th grade totaling 24 grade level academic instructional rooms.
 - 3 Self-contained classrooms to support districtwide programs.
 - **Although design enrollments are different, all schools are intended to operate as 4 CRs/grade buildings. By applying a loading level of 20 students per classroom x 24 K-5 academic instructional CRs = 480 Student Planning Target for Redistricting Plan. The Planning Target is merely a guideline and not the maximum capacity.**
 - This Planning Target aligns well with the peak projected K-5 enrollment (2,133), while providing buffer space in each building to allow for additional growth without having to redistrict again.
 - Please note, NPS class size loading levels are typically set to not exceed 23 at K, and 26 for 1st-5th grade.



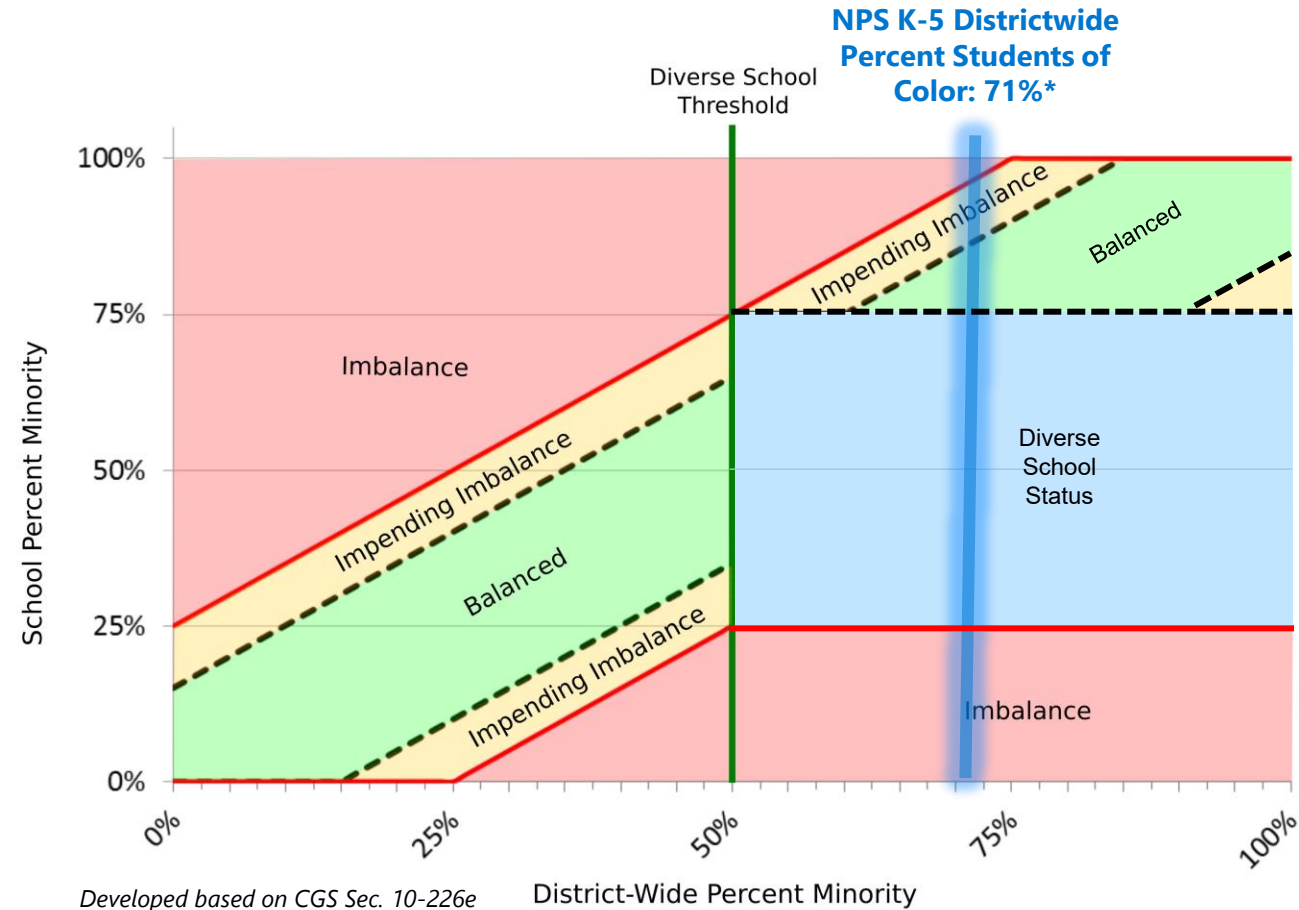
CT Racial Balance Law

NPS 2025-26 K-5 (Unofficial)

Minority Percentage: **71% ***

| Racial Balance Category | Racial Balance Ranges |
|----------------------------|--|
| Racially Balanced | Between 71% and 86% students of color |
| Impending Imbalance | Between 86% and 96% students of color |
| Racial Imbalance | Less than 25% OR Greater than 96% students of color |
| Diverse School | Between 25% and 75% students of color |

* Note that the above calculation is for K-5, PK is not included in the calculation at this time.

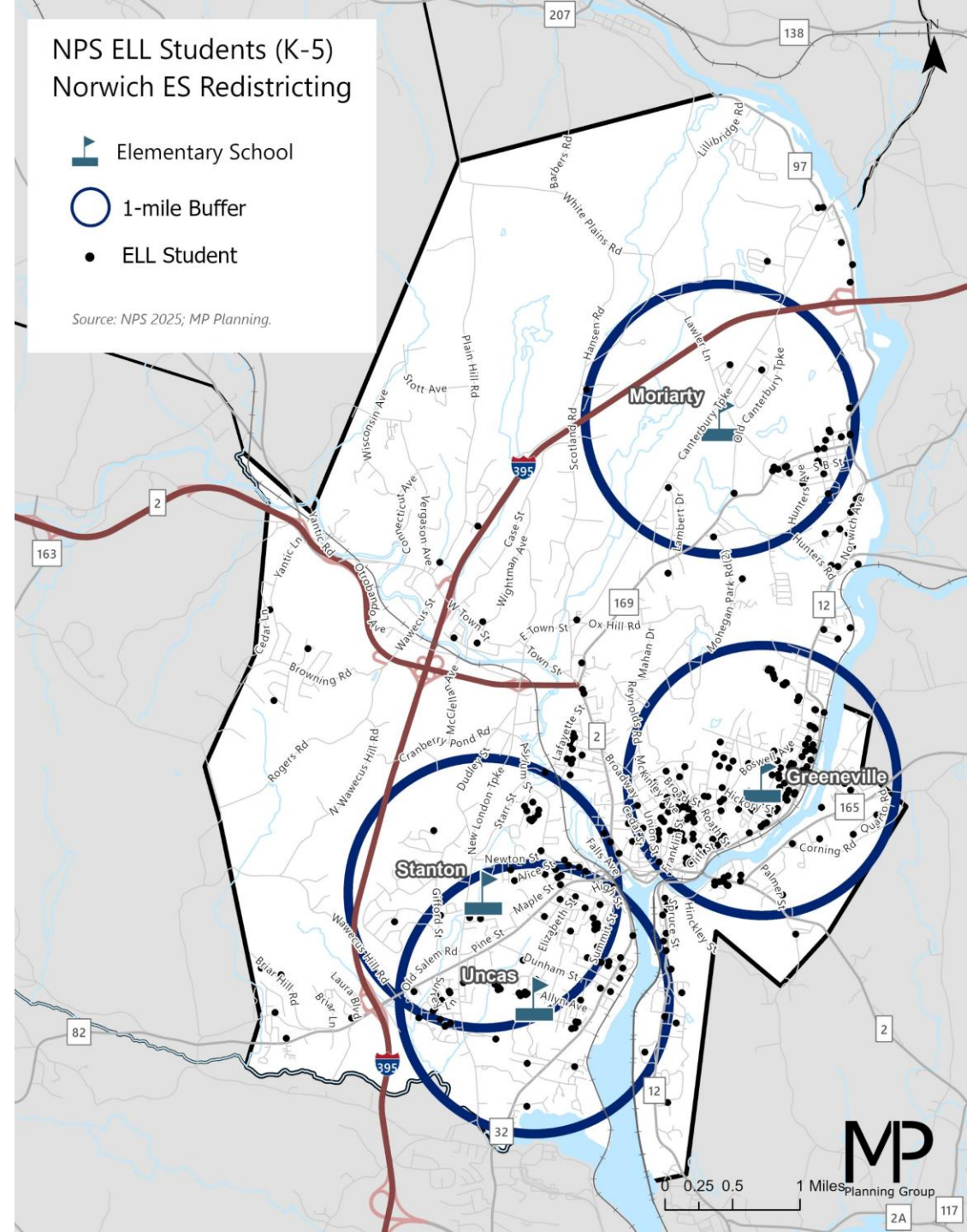


For NPS, as long as individual ES are between 25% and 86% (impending) or 96% (Imbalanced), NPS is in compliance with CT Racial Balance Law.

NPS ES Population Centers

| K-5 ELL within 1-Mile of School (2025-26) | | | |
|---|--------------|----------------|-------------|
| ES | ELL Students | Total Students | Percent ELL |
| Greeneville | 249 | 706 | 35.3% |
| Moriarty | 34 | 172 | 19.8% |
| Stanton | 96 | 368 | 26.1% |
| Uncas | 102 | 360 | 28.3% |

- **Greeneville has the greatest concentration of total students and ELL students living within 1-mile of the school with 706 and 249 students, respectively.**
- Moriarty has the fewest students living within 1-mile of school at just 172, with only 34 ELL students.
- Stanton & Uncas 1-Mile buffers overlap due to the close proximity. Both schools are around 100 ELL students and 360-370 total students within the 1-mile.
- **Balancing enrollment at Greeneville and maintaining neighborhood zoning is conflicted.**





Assumptions

- Students from Districtwide programs will attend special programs spaces in their zoned school.
- Pre-K students will attend Pre-K in their zoned school. It is anticipated that Pre-K program will grow over-time in the new buildings. The Plan calls for roughly 330 Pre-K seats divided between the four new schools.



Guiding Criteria & Parameters

Guiding Criteria

- Criteria reflect the BOE's goals, objectives, and desires for the redistricting process
- Guiding criteria are used as a basis for developing redistricting scenarios and to evaluate the performance of each scenario with respect to District objectives.
- Redistricting must align projected enrollments with building capacity.
- Long term sustainability- ensure each elementary school has sufficient headroom and space to accommodate foreseeable projected enrollment.
- Consider transportation operations, logistics and efficiency, and proximity of walkers to schools.
- Where possible, adhere to natural boundaries and keep neighborhoods together to the greatest extent possible.
- Maintain compliance with state racial balance requirements.

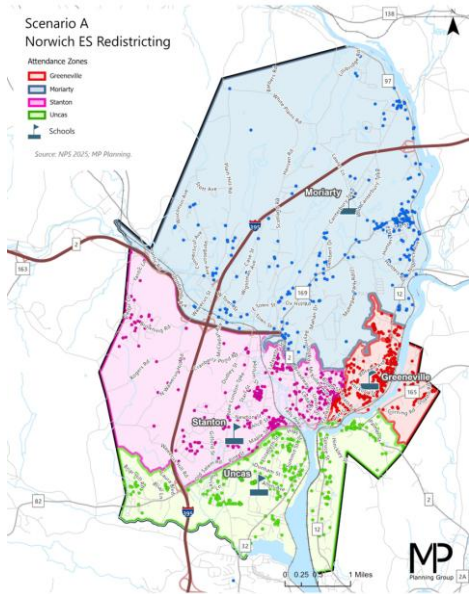
Additional Parameters

- Students from Districtwide programs will attend special programs spaces in their zoned school.
- Pre-K students will attend Pre-K in their zoned school. It is anticipated that Pre-K program will grow over-time in the new buildings. The Plan calls for roughly 330 Pre-K seats divided between the four new schools.

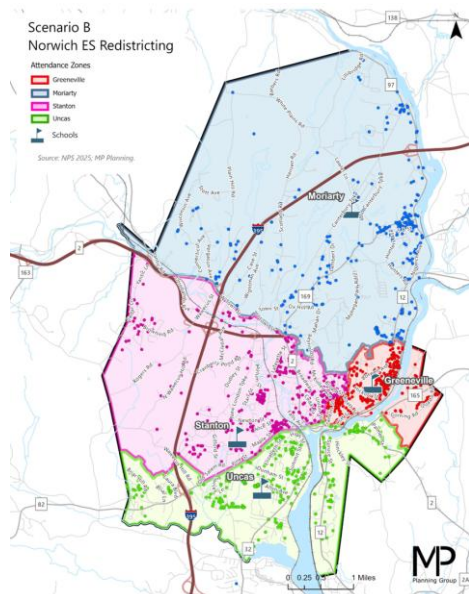


Scenarios Explored

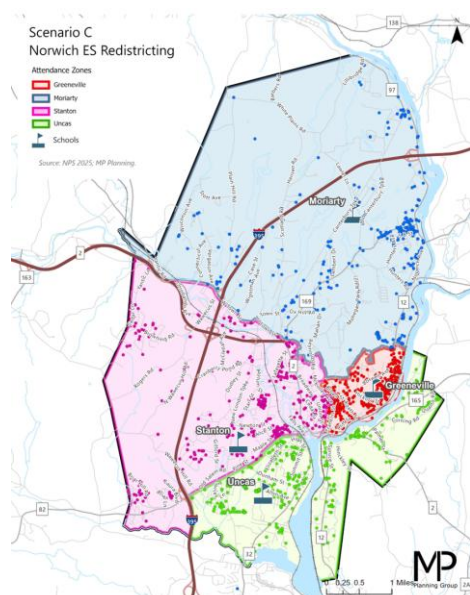
Scenario A



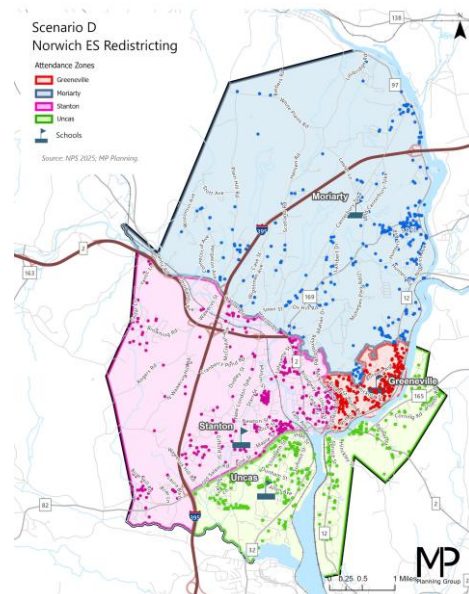
Scenario B



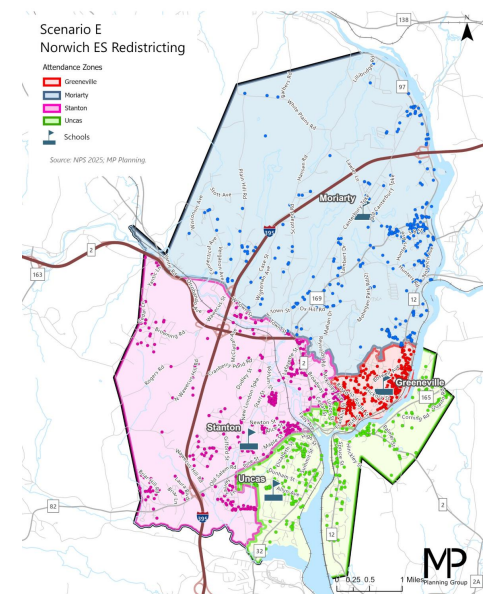
Scenario C



Scenario D



Scenario E

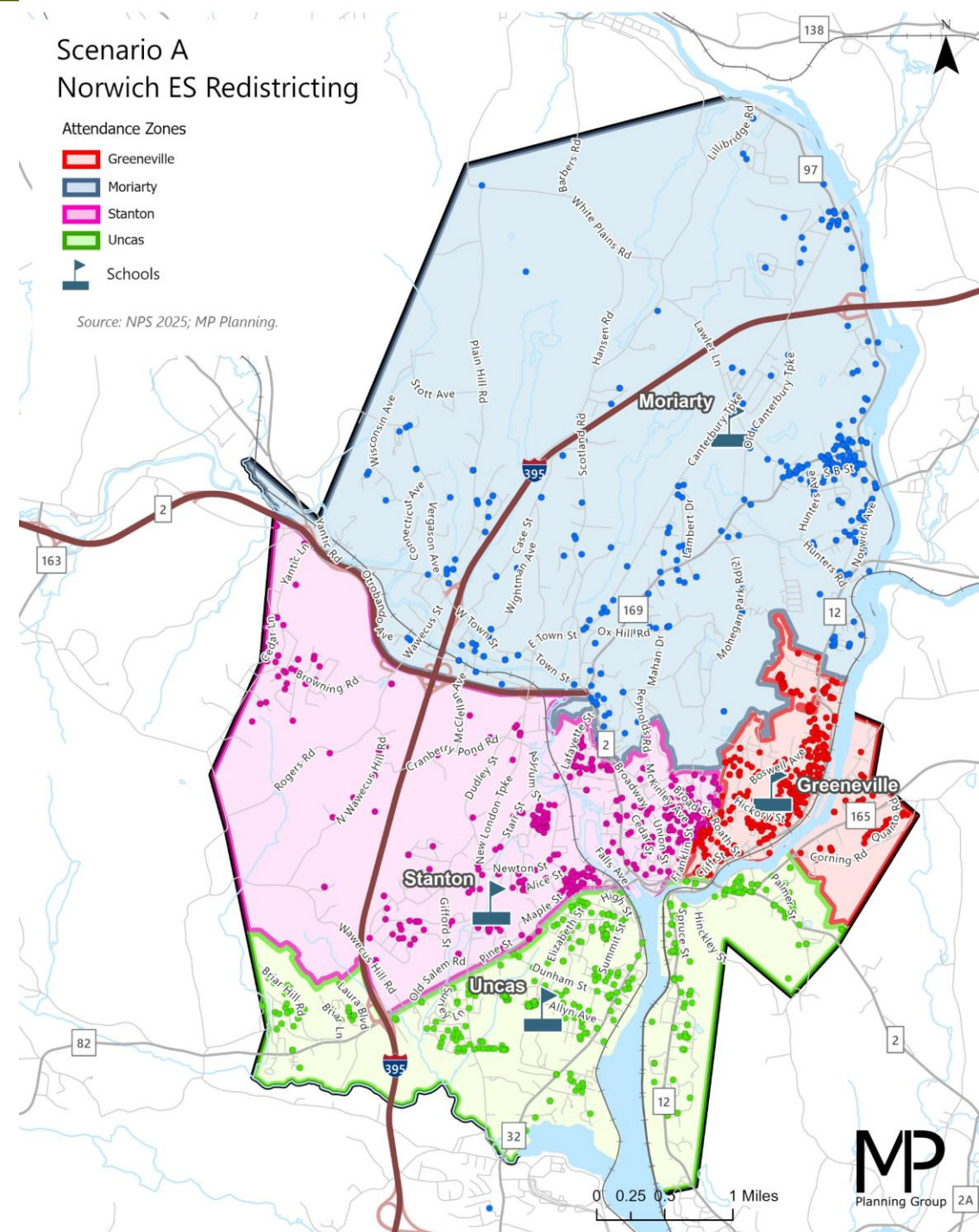


Tested out initial concepts, received feedback, and modified scenarios through an iterative process.

Scenario A

| Current School | New School | | | |
|-------------------|-------------|----------|---------|-------|
| | Greeneville | Moriarty | Stanton | Uncas |
| Huntington | 3.4% | 42.4% | 52.3% | 1.9% |
| Mahan | 3.0% | 5.0% | 15.1% | 76.9% |
| Moriarty | 26.5% | 39.4% | 31.8% | 2.4% |
| Stanton | 37.6% | 2.7% | 43.0% | 16.7% |
| Uncas | 43.5% | 4.2% | 1.4% | 50.9% |
| Veterans Memorial | 48.9% | 0.4% | 1.3% | 49.4% |
| Wequonnoc | 4.7% | 92.1% | 1.1% | 2.1% |

- Huntington students are mostly re-zoned to Stanton & Moriarty
- Mahan is mostly re-zoned to Uncas (78%)
- Moriarty is split between the New Moriarty, Greeneville, & Stanton
- Stanton is mostly re-zoned to Greeneville (Stanton satellite) & remain at New Stanton
- Uncas is mostly remain at New Uncas and re-zoned to Greeneville (Uncas Satellite)
- Veterans Memorial is mostly split between Uncas & Greeneville
- Wequonnoc is predominately re-zoned to Moriarty





Scenario A – Racial Balance

- For 2025-26 (unofficial), elementary schools range from roughly 59% to 83% percent minority with a districtwide K-5 average of 71%.
- All elementary schools would have been compliant with State Racial Balance Law over the last four years.
- **For NPS, as long as individual ES are between 25% and 86% (impending) or 96% (Imbalanced), NPS is in compliance with CT Racial Balance Law.**

Scenario A Racial Balance: 4-Year "Look Back" (K-5)

| ES | 2022-23 | 2023-24 | 2024-25 | 2025-26 | 4-Yr Avg |
|-----------------|--------------|--------------|--------------|--------------|--------------|
| Greeneville | 82.1% | 83.3% | 83.6% | 82.7% | 82.9% |
| Moriarty | 55.2% | 61.1% | 62.0% | 58.4% | 59.2% |
| Stanton | 73.4% | 73.2% | 70.9% | 71.1% | 72.2% |
| Uncas | 77.0% | 76.0% | 76.2% | 70.4% | 74.9% |
| K-5 Avg. | 72.3% | 73.5% | 73.3% | 70.7% | 72.4% |

| Racial Balance Category | Racial Balance Ranges |
|----------------------------|--|
| Racially Balanced | Between 71% and 86% students of color |
| Impending Imbalance | Between 86% and 96% students of color |
| Racial Imbalance | Less than 25% OR Greater than 96% students of color |
| Diverse School | Between 25% and 75% students of color |



Scenario A – ELL Impacts

- For 2025-26, elementary schools range from roughly 18% to 35% percent minority with a districtwide K-5 average of 27.2%.
- Greeneville has the highest percentage(35.6%) while Moriarty (17.5%) has the lowest.
- Stanton and Uncas are in line with the K-5 average.

| Scenario A ELL (2025-26) | |
|--------------------------|--------------|
| ES | 2025-26 |
| Greeneville | 35.6% |
| Moriarty | 17.5% |
| Stanton | 27.6% |
| Uncas | 28.2% |
| K-5 Avg. | 27.2% |



Scenario A

K-5 Enrollment Projections, by School (Medium Model)

| School | 2025-26 | 2026-27 | 2027-28 | 2028-29 | 2029-30 | 2030-31 | 2031-32 | 2032-33 | 2033-34 | 2034-35 | 2035-36 | 5-Yr Average | 5-Yr Change | 10-Yr Trend |
|-------------|---------|---------|---------|---------|---------|---------|---------|---------|---------|---------|---------|--------------|-------------|-------------|
| Greeneville | 482 | 468 | 494 | 491 | 494 | 531 | 537 | 545 | 542 | 543 | 552 | 496 | 10.2% | |
| Moriarty | 475 | 470 | 481 | 490 | 493 | 526 | 536 | 544 | 538 | 540 | 547 | 492 | 10.7% | |
| Stanton | 460 | 450 | 440 | 435 | 444 | 469 | 475 | 484 | 481 | 482 | 486 | 448 | 2.0% | |
| Uncas | 460 | 451 | 455 | 463 | 477 | 502 | 501 | 509 | 502 | 505 | 511 | 470 | 9.1% | |

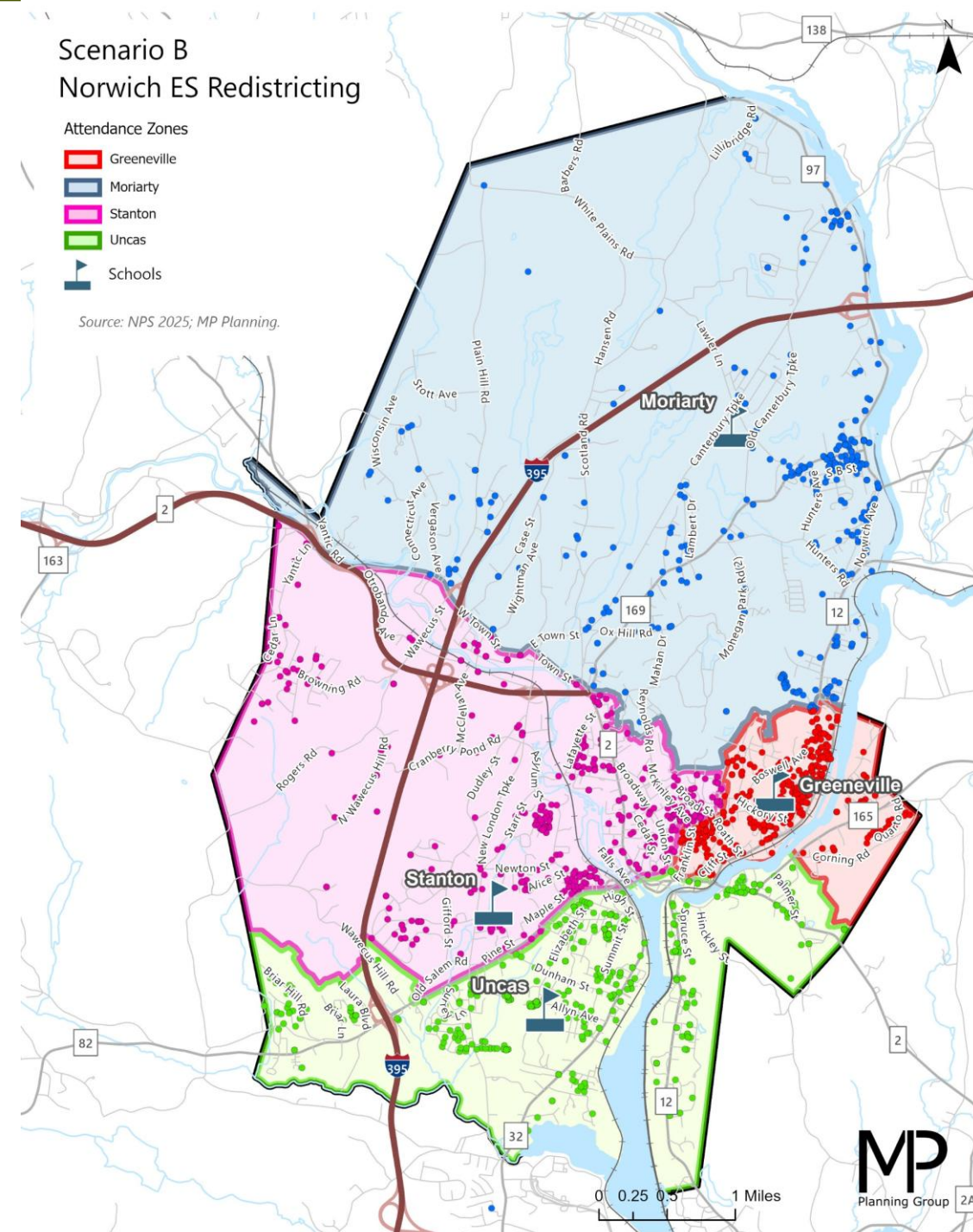
- In the first 5-years, all schools are in alignment with the K-5 planning targets with the enrollment average ranging from approx. 450-495.
- Initial average cohort size for all grades is 77-80 students.
- Buffer capacity exists to accommodate projected enrollment increase in the latter half of projection horizon.

Scenario B

| Current School | New School | | | |
|-------------------|-------------|----------|---------|-------|
| | Greeneville | Moriarty | Stanton | Uncas |
| Huntington | 3.4% | 24.2% | 69.3% | 3.0% |
| Mahan | 3.0% | 5.5% | 13.6% | 77.9% |
| Moriarty | 32.0% | 43.6% | 22.0% | 2.4% |
| Stanton | 37.6% | 2.7% | 43.0% | 16.7% |
| Uncas | 29.9% | 17.8% | 1.4% | 50.9% |
| Veterans Memorial | 48.9% | 0.4% | 1.3% | 49.4% |
| Wequonnoc | 4.2% | 92.6% | 1.1% | 2.1% |

- Huntington students are mostly re-zoned to Stanton & Moriarty
- Mahan is mostly re-zoned to Uncas
- Moriarty is split between Greeneville, remaining at New Moriarty (44%), and Stanton
- Stanton is mostly re-zoned to Greeneville (Stanton satellite), New Stanton, & Uncas
- Uncas mostly remains at New Uncas, re-zoned to Greeneville (Uncas Satellite), & Moriarty (Uncas Satellites)
- Veterans Memorial is mostly split between Greeneville and Uncas
- Wequonnoc is predominately re-zoned to Moriarty

Scenario B Norwich ES Redistricting





Scenario B – Racial Balance

- For 2025-26 (unofficial), elementary schools range from roughly 62% to 83% percent minority with a districtwide K-5 average of 71%.
- All elementary schools would have been compliant with State Racial Balance Law over the last four years.
- **For NPS, as long as individual ES are between 25% and 86% (impending) or 96% (Imbalanced), NPS is in compliance with CT Racial Balance Law.**

Scenario B Racial Balance: 4-Year "Look Back" (K-5)

| ES | 2022-23 | 2023-24 | 2024-25 | 2025-26 | 4-Yr Avg |
|-----------------|--------------|--------------|--------------|--------------|--------------|
| Greenville | 81.3% | 83.5% | 85.0% | 83.9% | 83.4% |
| Moriarty | 57.7% | 62.9% | 64.6% | 62.3% | 61.9% |
| Stanton | 72.8% | 71.1% | 67.5% | 66.2% | 69.4% |
| Uncas | 76.9% | 76.1% | 76.1% | 70.3% | 74.8% |
| K-5 Avg. | 72.3% | 73.5% | 73.3% | 70.7% | 72.4% |

| Racial Balance Category | Racial Balance Ranges |
|----------------------------|--|
| Racially Balanced | Between 71% and 86% students of color |
| Impending Imbalance | Between 86% and 96% students of color |
| Racial Imbalance | Less than 25% OR Greater than 96% students of color |
| Diverse School | Between 25% and 75% students of color |



Scenario B – ELL Impacts

- For 2025-26, elementary schools range from roughly 19% to 36% percent minority with a districtwide K-5 average of 27.2%.
- Greeneville has the highest percentage(36.2%) while Moriarty (19%) has the lowest.
- Stanton and Uncas are in line with the K-5 average.

| Scenario B ELL (2025-26) | |
|--------------------------|--------------|
| ES | 2025-26 |
| Greeneville | 36.2% |
| Moriarty | 19.0% |
| Stanton | 25.6% |
| Uncas | 28.1% |
| K-5 Avg. | 27.2% |



Scenario B – Enrollment Projections

K-5 Enrollment Projections, by School (Medium Model)

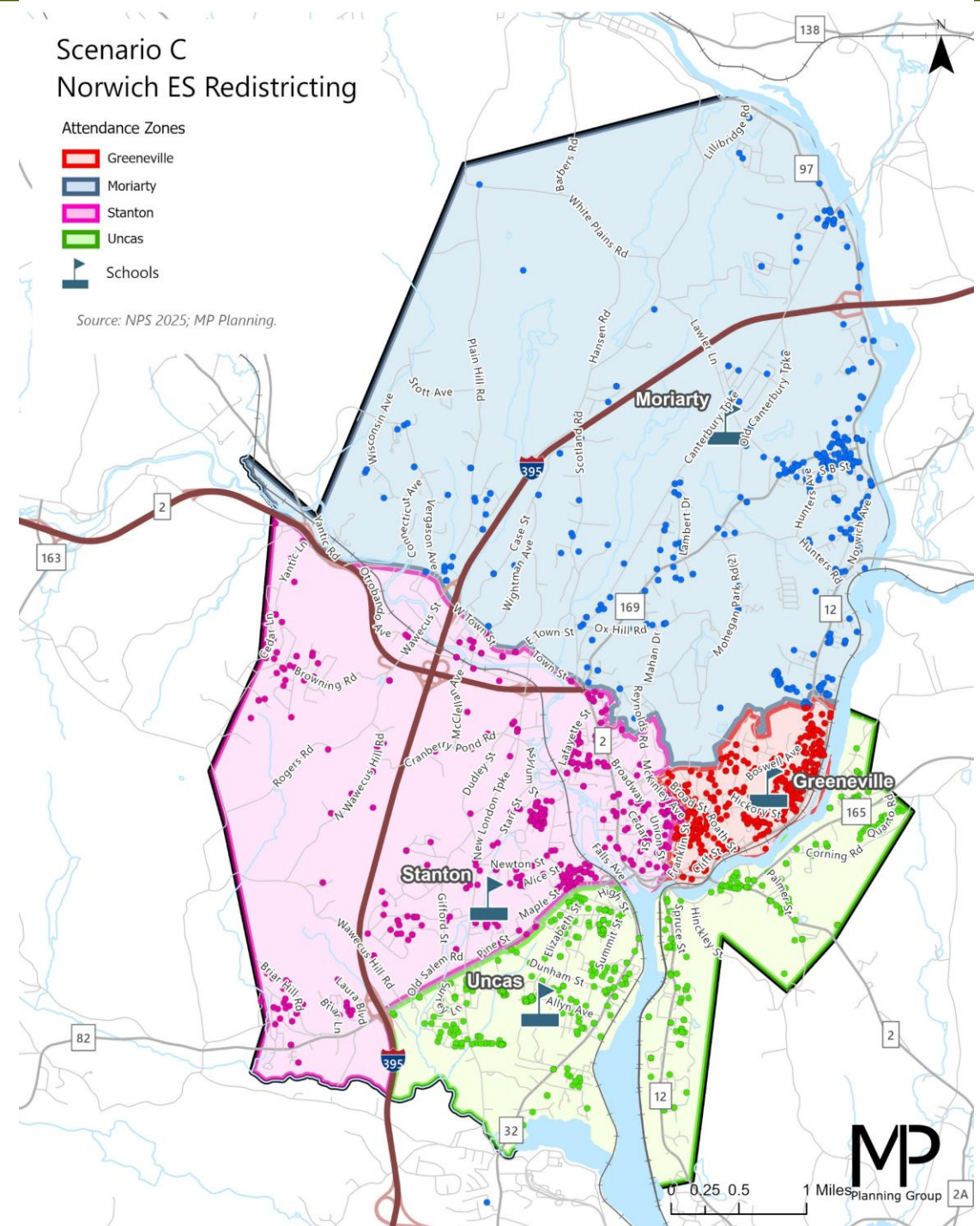
| School | 2025-26 | 2026-27 | 2027-28 | 2028-29 | 2029-30 | 2030-31 | 2031-32 | 2032-33 | 2033-34 | 2034-35 | 2035-36 | 5-Yr Average | 5-Yr Change | 10-Yr Trend |
|-------------|---------|---------|---------|---------|---------|---------|---------|---------|---------|---------|---------|--------------|-------------|-------------|
| Greeneville | 473 | 463 | 488 | 488 | 495 | 529 | 536 | 547 | 542 | 543 | 550 | 493 | 11.8% | |
| Moriarty | 474 | 461 | 469 | 470 | 476 | 510 | 510 | 516 | 515 | 514 | 522 | 477 | 7.6% | |
| Stanton | 465 | 457 | 448 | 446 | 448 | 475 | 488 | 497 | 492 | 495 | 501 | 455 | 2.2% | |
| Uncas | 465 | 458 | 465 | 475 | 489 | 514 | 515 | 522 | 514 | 518 | 523 | 480 | 10.5% | |

- In the first 5-years, all schools are in alignment with the K-5 planning targets with the enrollment average ranging from approx. 455-490.
- Initial average cohort size for all grades is 78-79 students.
- Buffer capacity exists to accommodate projected enrollment increase in the latter half of projection horizon.

Scenario C

| Current School | New School | | | |
|-------------------|-------------|----------|---------|-------|
| | Greeneville | Moriarty | Stanton | Uncas |
| Huntington | 3.8% | 24.2% | 69.7% | 2.3% |
| Mahan | 3.0% | 5.5% | 28.6% | 62.8% |
| Moriarty | 46.2% | 43.6% | 7.6% | 2.6% |
| Stanton | 37.6% | 2.7% | 42.5% | 17.2% |
| Uncas | 29.4% | 17.8% | 1.4% | 51.4% |
| Veterans Memorial | 24.9% | 0.4% | 0.8% | 73.8% |
| Wequonnoc | 4.2% | 92.6% | 1.1% | 2.1% |

- Huntington students are mostly re-zoned to Stanton & Moriarty
- Mahan is mostly re-zoned to Uncas & Stanton
- Moriarty is split between Greeneville & remain at New Moriarty
- Stanton is mostly re-zoned to Greeneville (Stanton satellite) and remain at New Stanton
- Uncas mostly remains at New Uncas, re-zoned to Greeneville (Uncas Satellite) and Moriarty (Uncas Satellites)
- Veterans Memorial is mostly split between Uncas & Greeneville
- Wequonnoc is predominately re-zoned to Moriarty





Scenario C – Racial Balance

- For 2025-26 (unofficial), elementary schools range from roughly 62% to 84% percent minority with a districtwide K-5 average of 71%.
- All elementary schools would have been compliant with State Racial Balance Law over the last four years.
- **For NPS, as long as individual ES are between 25% and 86% (impending) or 96% (Imbalanced), NPS is in compliance with CT Racial Balance Law.**

| Scenario C Racial Balance: 4-Year "Look Back" (K-5) | | | | | |
|---|--------------|--------------|--------------|--------------|--------------|
| ES | 2022-23 | 2023-24 | 2024-25 | 2025-26 | 4-Yr Avg |
| Greeneville | 82.7% | 84.8% | 86.0% | 83.5% | 84.2% |
| Moriarty | 57.7% | 62.9% | 64.6% | 62.3% | 61.9% |
| Stanton | 71.0% | 69.2% | 66.2% | 63.9% | 67.6% |
| Uncas | 77.1% | 76.5% | 76.3% | 72.6% | 75.6% |
| K-5 Avg. | 72.3% | 73.5% | 73.3% | 70.7% | 72.4% |

| Racial Balance Category | Racial Balance Ranges |
|----------------------------|--|
| Racially Balanced | Between 71% and 86% students of color |
| Impending Imbalance | Between 86% and 96% students of color |
| Racial Imbalance | Less than 25% OR Greater than 96% students of color |
| Diverse School | Between 25% and 75% students of color |



Scenario C – ELL Impacts

- For 2025-26, elementary schools range from roughly 19% to 37% percent minority with a districtwide K-5 average of 27.2%.
- Greeneville has the highest percentage(37.3%) while Moriarty (19%) has the lowest.
- Stanton is slightly below the average, and Uncas is in line with the K-5 average.

| Scenario C ELL (2025-26) | |
|--------------------------|--------------|
| ES | 2025-26 |
| Greeneville | 37.3% |
| Moriarty | 19.0% |
| Stanton | 24.4% |
| Uncas | 28.1% |
| K-5 Avg. | 27.2% |



Scenario C – Enrollment Projections

K-5 Enrollment Projections, by School (Medium Model)

| School | 2025-26 | 2026-27 | 2027-28 | 2028-29 | 2029-30 | 2030-31 | 2031-32 | 2032-33 | 2033-34 | 2034-35 | 2035-36 | 5-Yr Average | 5-Yr Change | 10-Yr Trend |
|-------------|---------|---------|---------|---------|---------|---------|---------|---------|---------|---------|---------|--------------|-------------|-------------|
| Greeneville | 468 | 467 | 483 | 487 | 489 | 522 | 534 | 544 | 539 | 541 | 546 | 490 | 11.5% | |
| Moriarty | 474 | 460 | 468 | 472 | 475 | 510 | 509 | 516 | 514 | 514 | 521 | 477 | 7.6% | |
| Stanton | 438 | 430 | 424 | 422 | 428 | 453 | 461 | 468 | 464 | 464 | 470 | 431 | 3.4% | |
| Uncas | 497 | 482 | 495 | 498 | 516 | 543 | 545 | 554 | 546 | 551 | 559 | 507 | 9.3% | |

- In the first 5-years, all schools are in alignment with the K-5 planning targets with the enrollment average ranging from approx. 430-505.
- Initial average cohort size for all grades is 73-83 students.
- Buffer capacity exists to accommodate projected enrollment increase in the latter half of projection horizon.

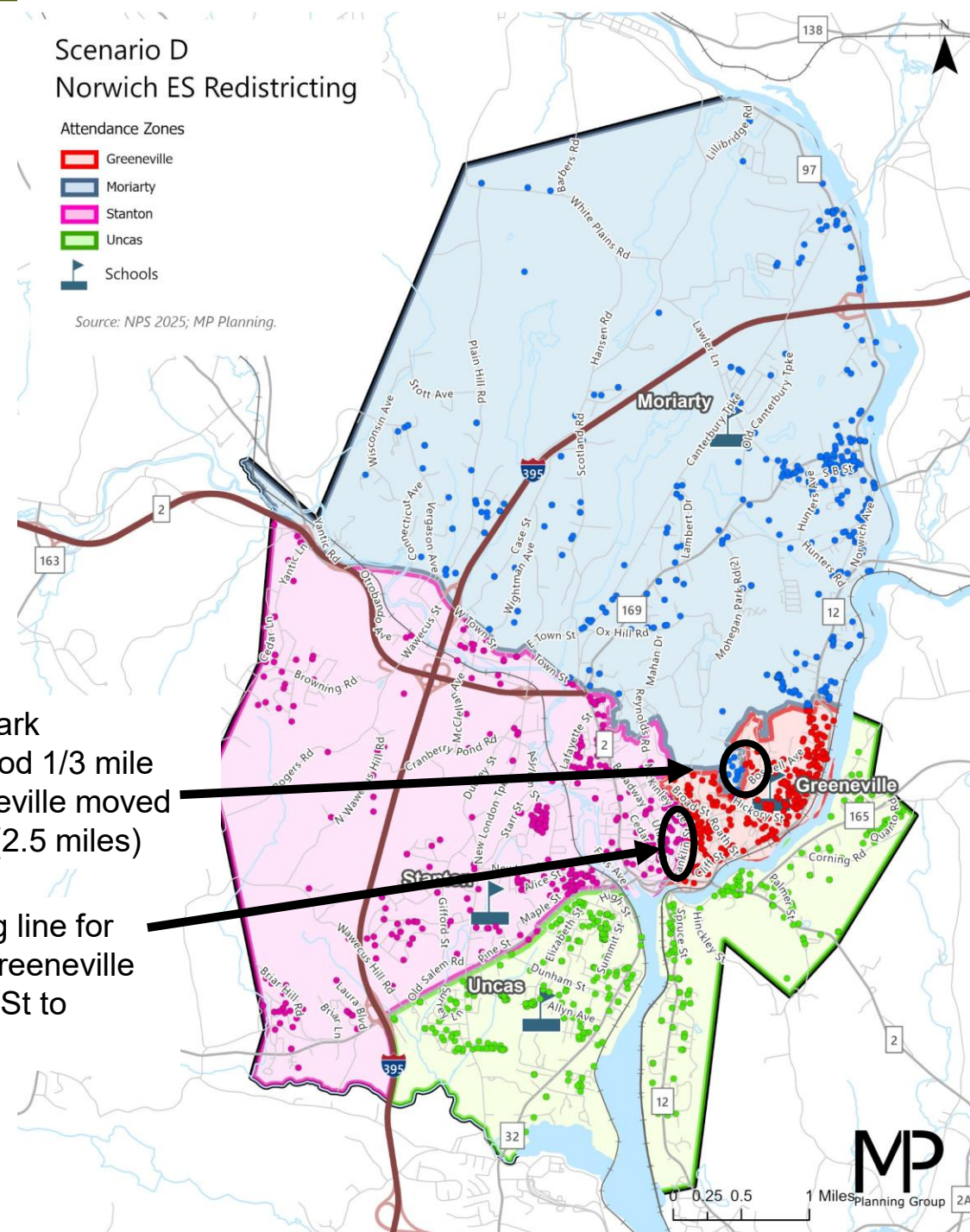
Scenario D

| Current School | New School | | | |
|-------------------|-------------|----------|---------|-------|
| | Greeneville | Moriarty | Stanton | Uncas |
| Huntington | 3.0% | 24.6% | 70.1% | 2.3% |
| Mahan | 3.0% | 5.5% | 28.6% | 62.8% |
| Moriarty | 42.3% | 43.9% | 11.2% | 2.6% |
| Stanton | 37.1% | 3.0% | 42.7% | 17.2% |
| Uncas | 6.5% | 40.7% | 1.4% | 51.4% |
| Veterans Memorial | 25.2% | 0.4% | 0.8% | 73.5% |
| Wequonnoc | 3.7% | 93.2% | 1.1% | 2.1% |

- Similar to Scenario C, except for two areas moved to Moriarty and Stanton, which was done to reduce the number of ELL students at Greeneville.
- Mohegan Park shifts 54 students (24 ELL) from Greeneville to Moriarty
- Chestnut to Franklin shifts 17 students (8 ELL) from Greeneville to Stanton

Mohegan Park Neighborhood 1/3 mile from Greeneville moved to Moriarty (2.5 miles)

Shifted dividing line for Stanton and Greeneville from Chestnut St to Franklin St.





Scenario D – Racial Balance

- For 2025-26 (unofficial), elementary schools range from roughly 65% to 82% percent minority with a districtwide K-5 average of 71%.
- All elementary schools would have been compliant with State Racial Balance Law over the last four years.
- Compared to Scenario C, Moriarty and Stanton’s diversity increased modest, while Greeneville’s decreased modestly.
- **For NPS, as long as individual ES are between 25% and 86% (impending) or 96% (Imbalanced), NPS is in compliance with CT Racial Balance Law.**

| Scenario D Racial Balance: 4-Year "Look Back" (K-5) | | | | | |
|---|--------------|--------------|--------------|--------------|--------------|
| ES | 2022-23 | 2023-24 | 2024-25 | 2025-26 | 4-Yr Avg |
| Greeneville | 80.3% | 82.8% | 84.0% | 82.3% | 82.4% |
| Moriarty | 61.5% | 66.1% | 67.5% | 64.7% | 64.9% |
| Stanton | 71.8% | 69.9% | 67.6% | 65.3% | 68.6% |
| Uncas | 77.1% | 76.5% | 76.3% | 72.6% | 75.6% |
| K-5 Avg. | 72.3% | 73.5% | 73.3% | 70.6% | 72.4% |

| Racial Balance Category | Racial Balance Ranges |
|----------------------------|--|
| Racially Balanced | Between 71% and 86% students of color |
| Impending Imbalance | Between 86% and 96% students of color |
| Racial Imbalance | Less than 25% OR Greater than 96% students of color |
| Diverse School | Between 25% and 75% students of color |



Scenario D – ELL Impacts

- For 2025-26, elementary schools range from roughly 22% to 36% percent minority with a districtwide K-5 average of 27.2%.
- Greeneville has the highest percentage(35.6%) while Moriarty (21.7%) has the lowest.
- Stanton is slightly below the average, and Uncas is in line with the K-5 average.
- Targeted adjustments to Greeneville only reduced the ELL percentage modestly.

| Scenario D ELL (2025-26) | |
|--------------------------|--------------|
| ES | 2025-26 |
| Greeneville | 35.6% |
| Moriarty | 21.7% |
| Stanton | 25.3% |
| Uncas | 28.0% |
| K-5 Avg. | 27.2% |



Scenario D – Enrollment Projections

K-5 Enrollment Projections, by School (Medium Model)

| School | 2025-26 | 2026-27 | 2027-28 | 2028-29 | 2029-30 | 2030-31 | 2031-32 | 2032-33 | 2033-34 | 2034-35 | 2035-36 | 5-Yr Average | 5-Yr Change | 10-Yr Trend |
|-------------|---------|---------|---------|---------|---------|---------|---------|---------|---------|---------|---------|--------------|-------------|-------------|
| Greeneville | 396 | 393 | 413 | 412 | 410 | 436 | 453 | 462 | 455 | 456 | 462 | 413 | 10.1% | |
| Moriarty | 529 | 512 | 521 | 526 | 535 | 576 | 574 | 581 | 577 | 579 | 586 | 534 | 8.9% | |
| Stanton | 455 | 446 | 437 | 438 | 445 | 467 | 477 | 484 | 481 | 482 | 488 | 447 | 2.6% | |
| Uncas | 497 | 484 | 495 | 499 | 514 | 545 | 541 | 551 | 546 | 549 | 556 | 507 | 9.7% | |

- In the first 5-years, all schools except Greeneville are in alignment with the K-5 planning targets with the enrollment average ranging from approx. 415-535. **Greeneville is projected to average 415 students over the first 5-years, while Moriarty averages 535 students.**
- Initial average cohort size has a wide range with **Greeneville at 66 and Moriarty at 88. This scenario has the greatest disparity in cohort size.**
- Buffer capacity exists to accommodate projected enrollment increase in the latter half of projection horizon.

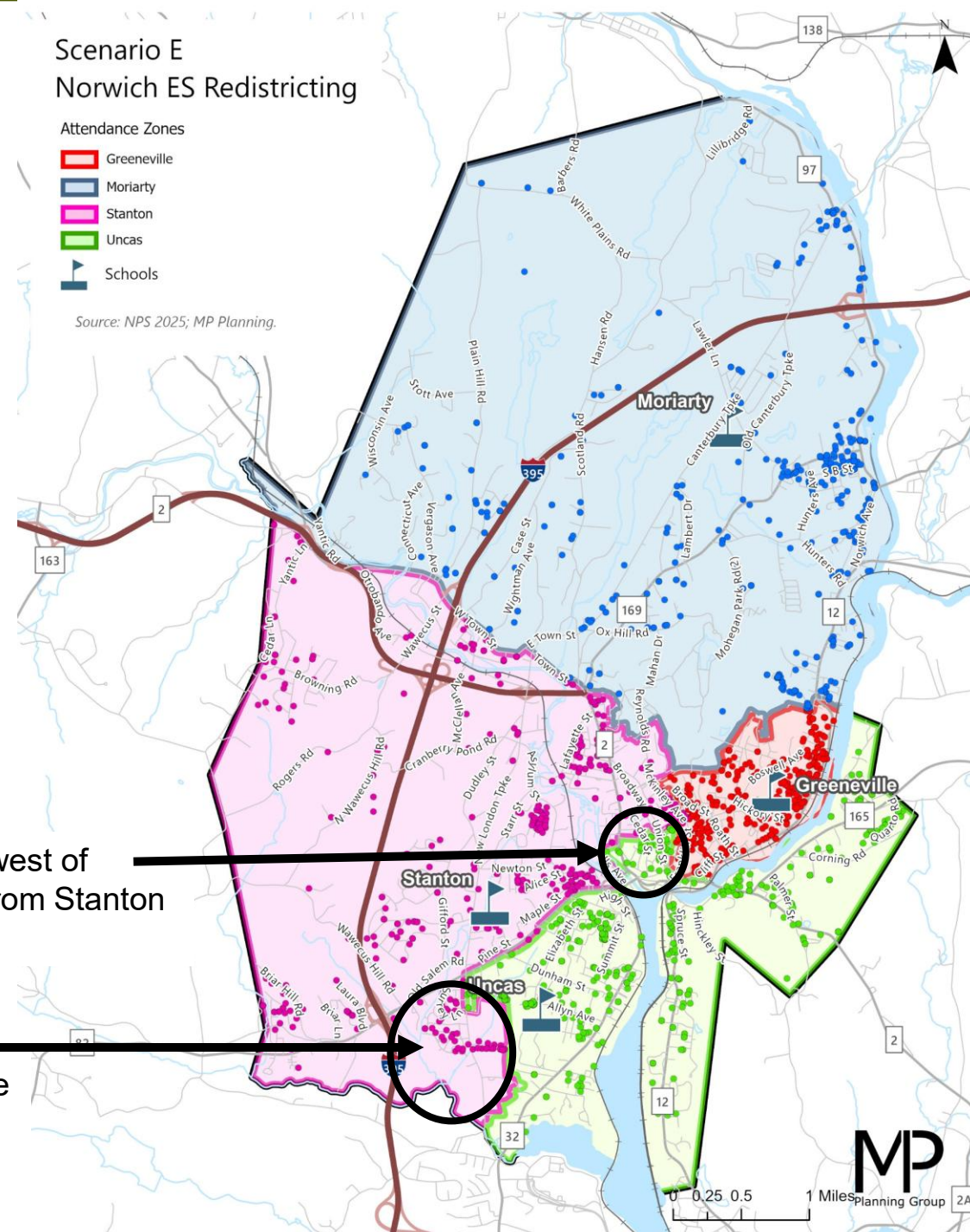
Scenario E

| Current School | New School | | | |
|-------------------|-------------|----------|---------|-------|
| | Greeneville | Moriarty | Stanton | Uncas |
| Huntington | 3.4% | 42.4% | 52.3% | 1.9% |
| Mahan | 3.0% | 5.0% | 15.1% | 76.9% |
| Moriarty | 26.5% | 39.4% | 31.8% | 2.4% |
| Stanton | 37.6% | 2.7% | 43.0% | 16.7% |
| Uncas | 43.5% | 4.2% | 1.4% | 50.9% |
| Veterans Memorial | 48.9% | 0.4% | 1.3% | 49.4% |
| Wequonnoc | 4.7% | 92.1% | 1.1% | 2.1% |

- **Similar to Scenario C, except for two areas swapped between Stanton and Uncas.**
- Area between Chestnut St to Falls Ave and south of Buckingham shifts about 40 students from Stanton to Uncas.
- New London Ave south of Route 82 shifts about 55 students from Uncas to Stanton.

Shifted area west of Chestnut St from Stanton to Uncas

Shifted neighborhoods around New London Tpk from Uncas to Stanton





Scenario E – Racial Balance

- For 2025-26 (unofficial), elementary schools range from roughly 62% to 84% percent minority with a districtwide K-5 average of 71%.
- All elementary schools would have been compliant with State Racial Balance Law over the last four years.
- **For NPS, as long as individual ES are between 25% and 86% (impending) or 96% (Imbalanced), NPS is in compliance with CT Racial Balance Law.**

| ES | 2022-23 | 2023-24 | 2024-25 | 2025-26 | 4-Yr Avg |
|-----------------|--------------|--------------|--------------|--------------|--------------|
| Greeneville | 82.6% | 84.6% | 86.0% | 83.5% | 84.2% |
| Moriarty | 57.7% | 62.9% | 64.6% | 62.0% | 61.8% |
| Stanton | 70.5% | 68.5% | 67.2% | 62.9% | 67.3% |
| Uncas | 78.0% | 77.8% | 76.0% | 74.1% | 76.5% |
| K-5 Avg. | 72.3% | 73.5% | 73.3% | 70.6% | 72.4% |

| Racial Balance Category | Racial Balance Ranges |
|----------------------------|--|
| Racially Balanced | Between 71% and 86% students of color |
| Impending Imbalance | Between 86% and 96% students of color |
| Racial Imbalance | Less than 25% OR Greater than 96% students of color |
| Diverse School | Between 25% and 75% students of color |



Scenario E – ELL Impacts

- For 2025-26, elementary schools range from roughly 19% to 37% percent minority with a districtwide K-5 average of 27.2%.
- Greeneville has the highest percentage(37.3%) while Moriarty (19.0%) has the lowest.
- Stanton is below the average by 5%, and Uncas is in line with the K-5 average.

| Scenario E ELL (2025-26) | |
|--------------------------|--------------|
| ES | 2025-26 |
| Greeneville | 37.3% |
| Moriarty | 19.0% |
| Stanton | 22.9% |
| Uncas | 29.5% |
| K-5 Avg. | 27.2% |



Scenario E – Enrollment Projections

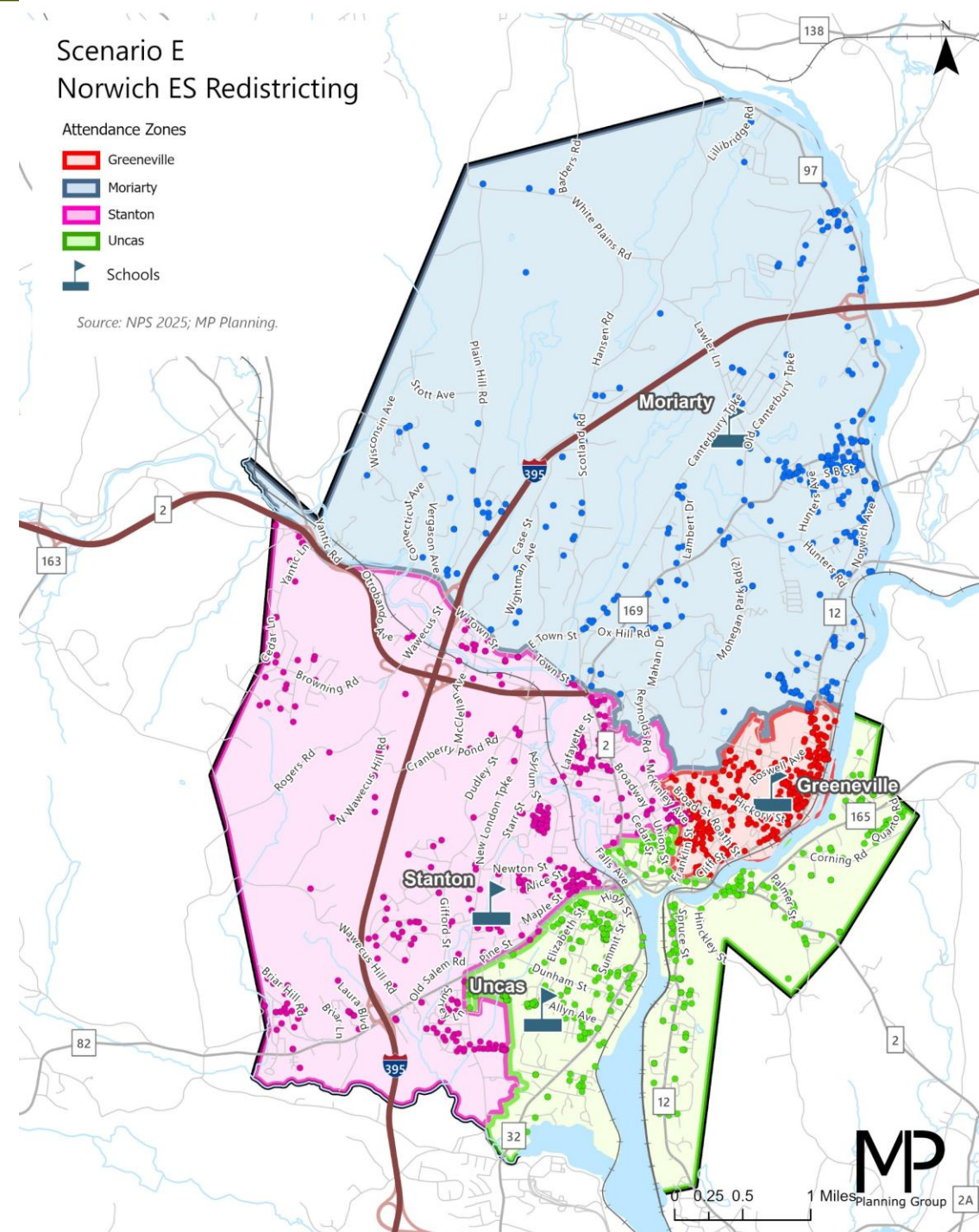
K-5 Enrollment Projections, by School (Medium Model)

| School | 2025-26 | 2026-27 | 2027-28 | 2028-29 | 2029-30 | 2030-31 | 2031-32 | 2032-33 | 2033-34 | 2034-35 | 2035-36 | 5-Yr Average | 5-Yr Change | 10-Yr Trend |
|-------------|---------|---------|---------|---------|---------|---------|---------|---------|---------|---------|---------|--------------|-------------|-------------|
| Greeneville | 466 | 464 | 479 | 481 | 485 | 518 | 531 | 539 | 533 | 533 | 540 | 485 | 11.2% | |
| Moriarty | 474 | 458 | 466 | 470 | 473 | 505 | 504 | 513 | 508 | 511 | 518 | 474 | 6.5% | |
| Stanton | 455 | 446 | 440 | 437 | 445 | 466 | 482 | 489 | 485 | 488 | 495 | 447 | 2.4% | |
| Uncas | 482 | 467 | 481 | 487 | 501 | 535 | 528 | 537 | 533 | 534 | 539 | 494 | 11.0% | |

- In the first 5-years, all schools are in alignment with the K-5 planning targets with the enrollment average ranging from approx. 450-495.
- Initial average cohort size is tightly banded between 76-80 students.
- Buffer capacity exists to accommodate projected enrollment increase in the latter half of projection horizon.

Preferred Redistricting Plan Scenario E

- In general, all Scenarios performed fairly well vis-à-vis the redistricting criteria.
- All Scenarios balanced enrollment and provide headroom for additional students beyond those projected. This is an important consideration should students attending regional magnets, parochial or other offerings decide to return to NPS.
- Based on feedback, adjustments were made through an iterative process in creating Scenario E, which is the recommended scenario.
- **Scenario E was the best scenario at providing the most optimal and efficient transportation, while balancing enrollment.**





Online Map Viewer

Online interactive map was prepared for Scenario E and can be accessed via the QR code or link below:



or visit:

<https://arcg.is/1uXP004>

Please send questions to NPS at redistrict@norwichpublicschools.org

