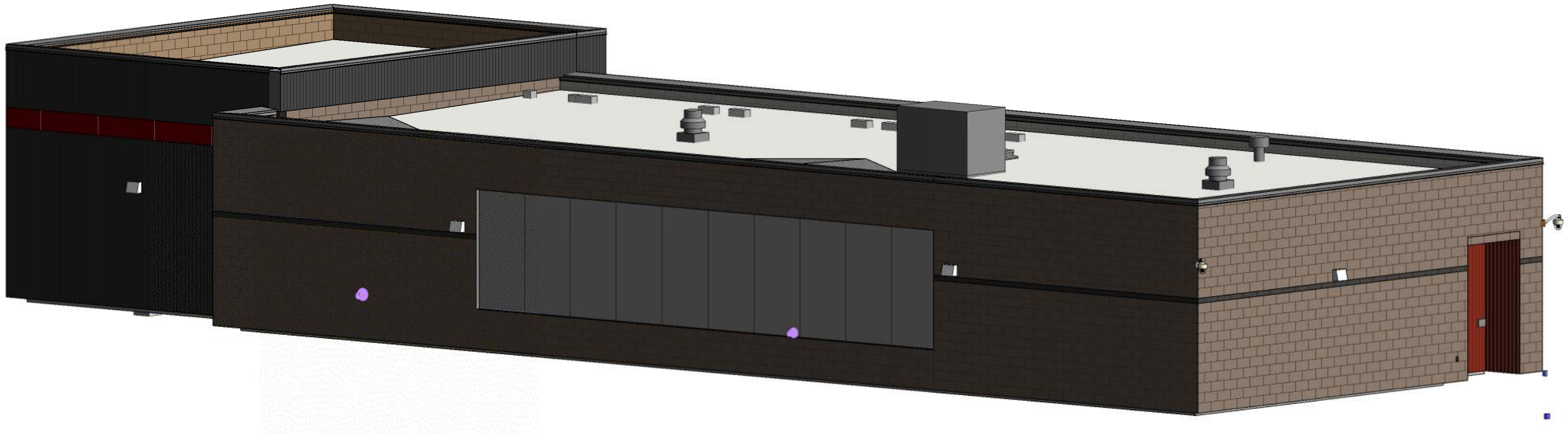


ENTRY - FRONT



**GENERAL NOTES - EXTERIOR ELEVATIONS**

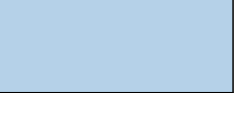
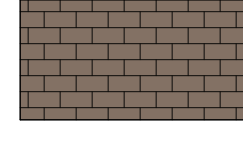

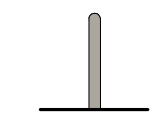
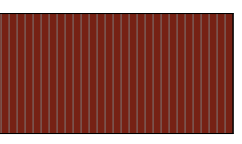
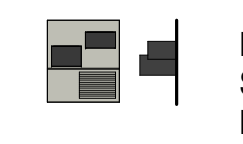
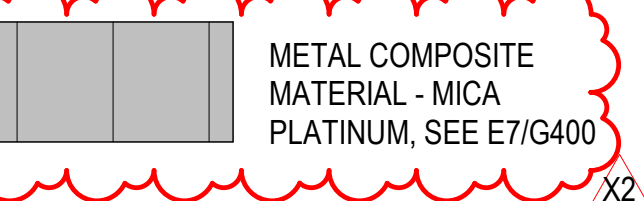
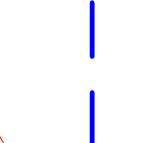
**Exterior Finishes:** Provide exterior finishes, continuous until a transition is indicated. Provide on all similar elements, and on surfaces not shown in elevation such as back sides of piers, columns and other surfaces that may not be visible in the elevation view.

**Lighting:** Coordinate wall and soffit mounted lighting locations with Electrical drawings and with the Architect prior to rough-in.

**Metal Panel Joints:** Coordinate metal panel joints to align with adjacent vertical and horizontal mullions on storefronts and other metal panel finishes.

**MHTN ARCHITECTS**  
**MHTN Architects, Inc.**  
 280 South 400 West, Suite 250  
 Salt Lake City, Utah 84101  
 Telephone (801) 595-6700  
 Telefax (801) 595-6717  
 www.mhtn.com

**LEGEND - EXTERIOR ELEVATION**

	VISION GLASS		MASONRY TYPE 1 - CMU (HONED) - RUNNING BOND BASIS OF DESIGN: SUNROC SAGE
	FORMED METAL WALL PANEL BOX RIB HCF BASIS OF DESIGN: FABRAL CHARCOAL		STEEL PIPE BOLLARD - SEE DETAIL D5 / G402
	FORMED METAL WALL PANEL BOX RIB HCF BASIS OF DESIGN: FABRAL COLONIAL RED		ELECTRICAL WATER COOLER - SEE DETAIL C1 / G200 RE: PLUMBING
	METAL COMPOSITE MATERIAL - MICA PLATINUM, SEE E7/G400 X2		CONTROL JOINT - SEE DETAIL - / -



**PARK CITY SCHOOL DISTRICT**  
**DOZIER SPORTS COMPLEX**  
 1750 KEARNS BLVD  
 PARK CITY, UT 84060

©2017 MHTN ARCHITECTS, INC.  
 Confidentiality Notice  
 This document is intended for use on the Project identified herein by individuals and companies involved in the design, permitting, bidding and construction of the Project. Other distribution, use, publication, or reproduction of this document for any other purpose is strictly prohibited. If a digital copy of this document is received in error, please delete it.

ISSUE:  
 MHTN PROJECT NO. 2025507  
**VIEW AND PRINT THIS DRAWING IN COLOR**  
 Original drawing is 36" x 42". Do not scale contents of this drawing.

REVISIONS:  
 CONTRACTOR TO VERIFY DRAWINGS IN FIELD USE REFLECT LAST REVISION DATE.

NO.	DATE	DESCRIPTION
01	10/03/25	ADD K2

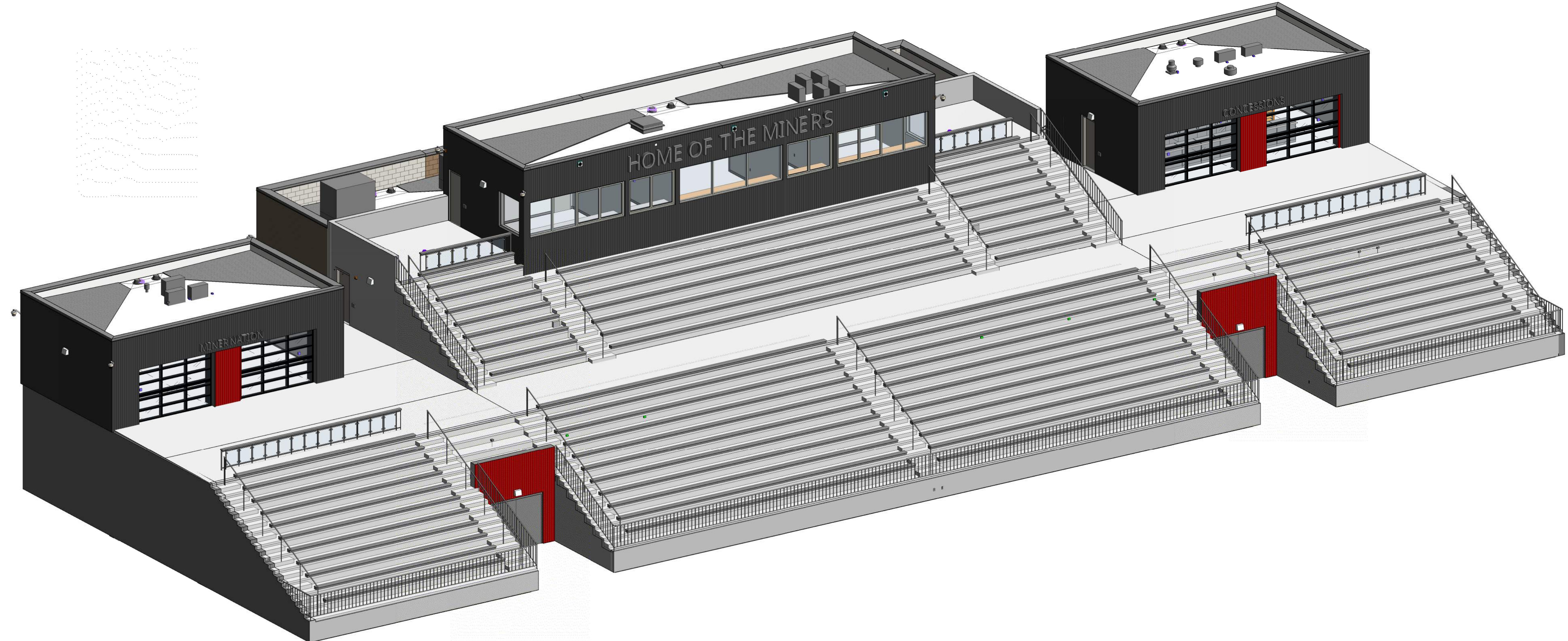
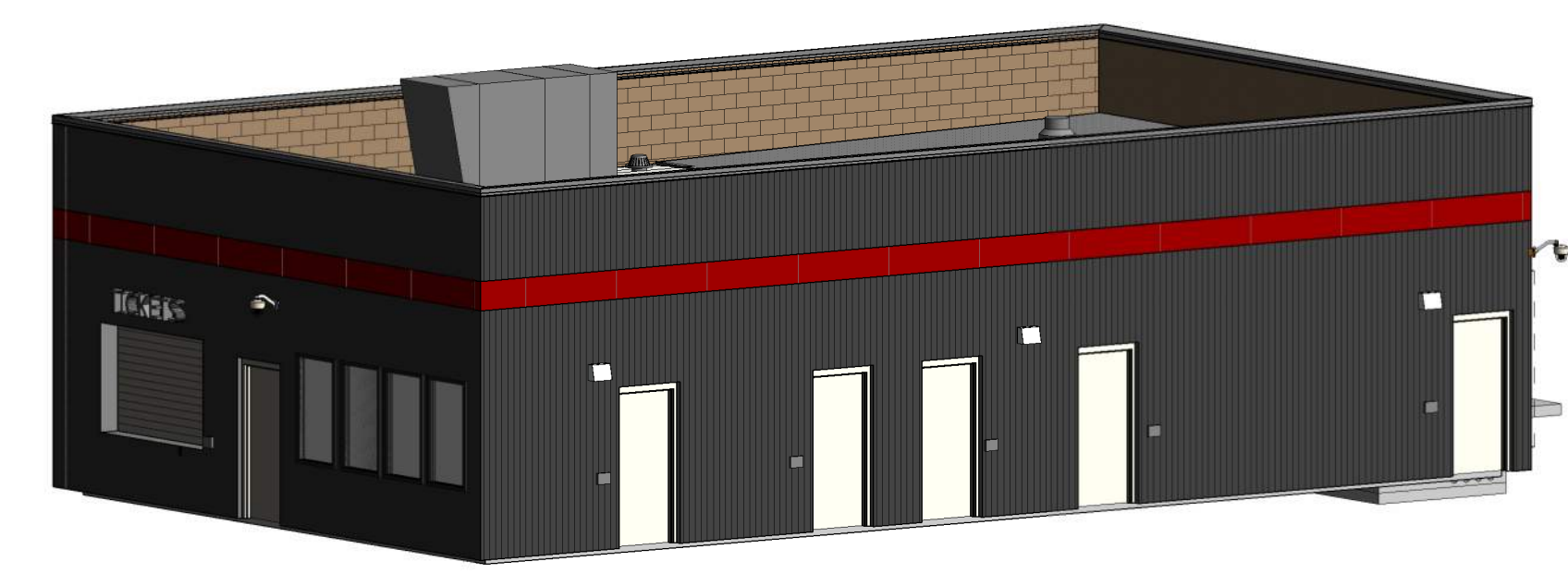
ISSUE:  
**ADDENDUM #2**  
 OCTOBER 3, 2025

SHEET NAME:  
**EXTERIOR ELEVATIONS**

SHEET NUMBER:  
**A200A**



ENTRY - BACK



BUILDING B - PERSPECTIVE SE