
To: Boston School Committee
From: Daniel Rosengard, Executive Director of Transportation
CC: Mary Skipper, Superintendent; Dr. Samuel DePina, Senior Deputy Superintendent of Operations
Subject: On-Time Performance Data Reporting
Date: May 6, 2026

This memorandum provides an update on BPS Transportation's on-time performance data. With the Systemic Improvement Plan (SIP) with DESE coming to a conclusion at the end of the 2024-25 school year, Boston Public Schools committed to provide quarterly updates on transportation on-time performance to the School Committee.

On-Time Performance (OTP) is one of the primary measures of BPS Transportation's performance. OTP measures the percentage of buses that arrive at school prior to the bell in the morning, and the percentage of buses that arrive at school prior to the scheduled departure time in the afternoon.

Since 2022, BPS has made significant progress in addressing many of the long-standing structural issues impeding transportation improvements, leading to measurable, sustained improvements in on-time performance. As outlined in the April 2025 ["Driving Change: BPS Transportation Progress Report 2022-2025"](#), BPS is committed to making further system-level changes to align demand for bus service more closely with the capacity of our fleet, increase the efficiency of our system, and improve our ability to deliver high-quality transportation service to all students and families.

Highlights and points of note from 2025-26 OTP since our last quarterly update include the following:

- Morning:
 - Morning OTP averaged 85% in February, with February OTP significantly impacted by lingering effects - including narrowed and sometimes inaccessible streets, ongoing snow removal efforts across the City, and increased traffic congestion - from the two major storms that Boston experienced this winter.
 - Morning OTP averaged 93% in March and 94% in April. This represents the highest morning OTP on record for any month.
 - As noted in the last quarterly memo, uncovered routes saw an increase starting in December. In response, BPS Transportation worked to consolidate routes, reducing the number of buses and drivers needed each day to cover all routes from 640 in December to fewer than 625 currently. We also worked closely with our vendor to ensure the appropriate steps were being taken to address staffing vacancies, absenteeism, and bus maintenance issues contributing to uncovered buses and took additional contractual steps to ensure vendor accountability through non-performance damages for any continued coverage issues.
 - Morning uncovered routes saw a significant reduction in March down to 0.9% of scheduled morning routes, followed by further improvement in April down to 0.6% of scheduled morning routes. BPS continues working urgently with Transdev to address each of the underlying factors of uncovered trips and ensure they are kept to a minimum going forward.
- Afternoon:

- Afternoon OTP averaged 81% in February. As with morning OTP, February afternoon OTP was significantly impacted by lingering effects from the two major storms that Boston experienced this winter.
- Afternoon OTP averaged 88% in March and 89% in April. This also represents the highest afternoon OTP on record for April.
- Afternoon uncovered routes also saw a significant reduction from prior months, down to 0.2% of scheduled afternoon routes in March and 0.4% of scheduled afternoon routes in April.

The below tables report both monthly and year-to-date OTP data for morning and afternoon, in addition to the percentage of uncovered and unreported trips from each time period. The data for subsequent months will be added to the tables with each quarterly update to the School Committee.

Morning On-Time Performance								
Time Period	Total Scheduled Routes	Routes without Data (Unreported)	Uncovered Routes	Percent Unreported	Percent Uncovered Routes	OTP	OTP Within 15 Minutes	OTP Within 30 Minutes
August	1845	189	13	10.2%	0.7%	82.2%	91.5%	94.9%
September	27712	680	86	2.5%	0.3%	86.7%	96.4%	98.7%
October	31749	739	149	2.3%	0.5%	91.5%	97.8%	99.0%
November	24348	640	143	2.6%	0.6%	94.3%	98.1%	98.9%
December	21808	615	447	2.8%	2.0%	92.7%	96.7%	97.4%
January	24388	439	329	1.8%	1.3%	88.1%	94.4%	96.9%
February	18754	516	468	2.8%	2.5%	84.7%	93.7%	96.0%
March	31751	402	289	1.3%	0.9%	92.5%	97.6%	98.5%
April	23177	238	135	1.0%	0.6%	94.4%	98.4%	99.0%
May								
June								
Year to Date	205532	4458	2059	2.2%	1.0%	90.7%	96.7%	98.2%

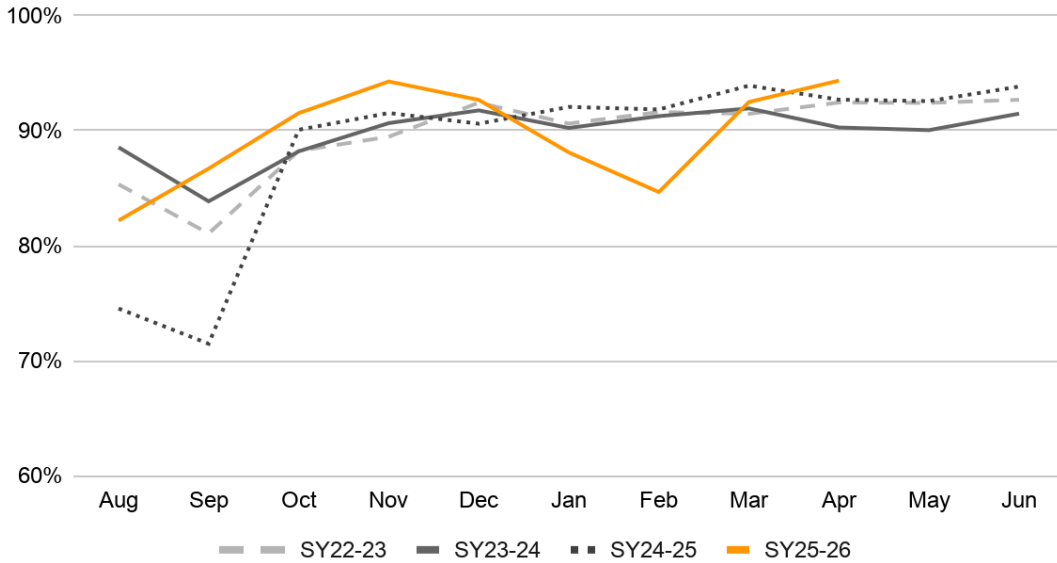
Afternoon On-Time Performance								
Time Period	Total Scheduled Routes	Routes without Data (Unreported)	Uncovered Routes	Percent Unreported	Percent Uncovered Routes	OTP	OTP Within 15 Minutes	OTP Within 30 Minutes
August	2177	179	11	8.2%	0.5%	79.5%	92.7%	96.8%
September	27786	491	118	1.8%	0.4%	81.9%	94.8%	98.2%
October	31135	679	128	2.2%	0.4%	84.6%	96.5%	98.6%
November	23823	544	69	2.3%	0.3%	86.9%	97.1%	98.9%
December	21373	544	412	2.5%	1.9%	84.0%	94.9%	96.8%
January	24006	406	177	1.7%	0.7%	85.1%	95.9%	98.0%
February	18448	436	320	2.4%	1.7%	81.2%	93.2%	96.2%
March	30976	503	54	1.6%	0.2%	87.8%	97.1%	98.9%
April	22548	274	100	1.2%	0.4%	88.7%	97.0%	98.6%
May								

June								
Year to Date	202272	4056	1389	2.0%	0.7%	85.1%	95.9%	98.1%

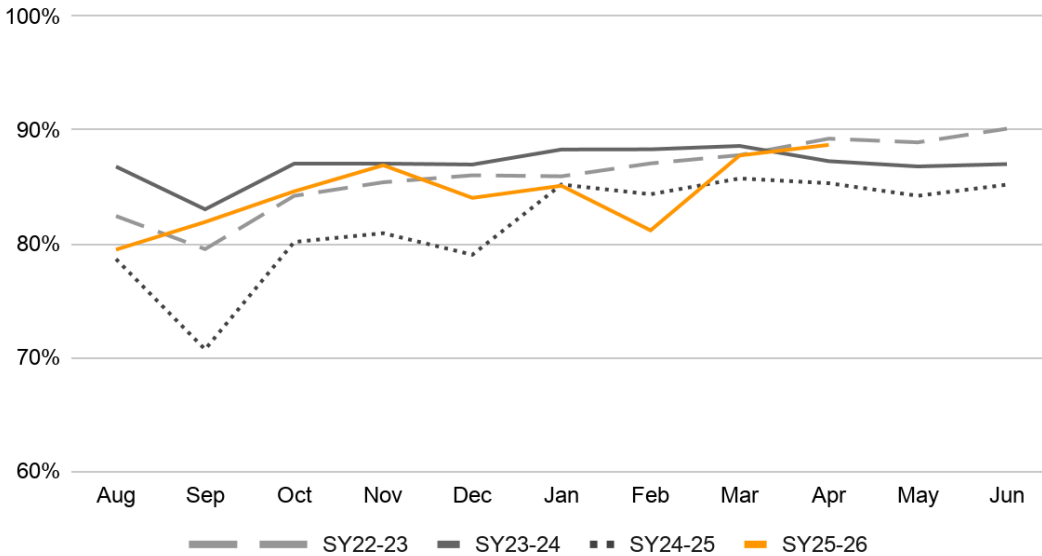
Year-Over-Year OTP

The below graphs show morning and afternoon OTP, by month, for this school year as well as all three years under the SIP, in order to show how OTP has progressed over time. As these graphs indicate, and as stated above, morning and afternoon On-Time Performance have both been steadily improving and trending higher than prior years outside of months impacted by major storm-related delays.

Morning On-Time Performance



Afternoon On-Time Performance



Definition of Terms:

- **Total Scheduled Routes:** The total number of routes scheduled to run during the month
- **Routes without Data (Unreported):** The number of routes within the month that did not report an arrival time at the school
- **Uncovered Routes:** The number of routes within the month that were scheduled to run but did not run due to not having a driver and/or vehicle available to complete the route
- **On-time Performance (OTP):** The percentage of reported routes (includes routes with a reported arrival time plus uncovered routes) where the bus arrived at the school to drop off students before the school bell (morning routes) or the bus arrived at the school to pick up students before the scheduled departure time from the school (afternoon routes)
- **OTP Within 15 Minutes:** The percentage of reported routes where the bus arrived at the school to drop off students within 15 minutes of the school bell (morning routes) or the bus arrived at the school to pick up students within 15 minutes of the scheduled departure time from the school (afternoon routes)
- **OTP Within 30 Minutes:** The percentage of routes where the bus arrived at the school to drop off students within 30 minutes of the school bell (morning routes) or the bus arrived at the school to pick up students within 30 minutes of the scheduled departure time from the school (afternoon routes)