

# Artificial Intelligence Policy

Lisa Irey, Chief Technology Officer  
Tony Beatrice, Deputy Chief of Teaching and Learning  
May 6, 2026

# What is AI?



## **Artificial Intelligence (AI)**

A branch of computer science focused on creating systems capable of performing tasks that typically require human intelligence.

## **Generative AI (GenAI)**

A new type of AI that creates new content such as text, images, audio, and code based on patterns it has learned from vast amounts of data.

## **Agentic AI**

AI systems that are designed to make decisions autonomously and take actions with little or no human oversight (such as sending emails, creating calendar events, etc.)

**and more emerging technologies to come...**

# Why Policy?



## AI Guidelines (Current)

**Purpose:** Guidance around implementation and best practices

Flexible document that can be updated more frequently based on feedback

First released in 2023; updated in August 2025 based on staff and student feedback

 [Link to BPS AI Guidelines](#)

## AI Policy (Proposed)

**Purpose:** Governance framework and requirements

**Priorities:**

- safe and ethical use
- the protection of student privacy + data
- AI literacy - the ability to understand, evaluate, and use AI technologies in a responsible, safe, and effective manner regardless of whether we use them frequently or not at all

# BPS Values for AI Usage



**Human-Centric Approach**

**Equity & Inclusion**

**Purposeful & Responsible Use**

**Safety, Privacy, & Security**

**Transparency & Explainability**

**Continuous Learning**

# Shaping Responsible Use of AI



# Policy Overview



The policy document is organized in the following sections, with a focus on safe, responsible and ethical use of AI:

- I. Vision, Core Values, and Guidelines
- II. Data, Privacy, and Security
- III. AI in Teaching, Learning, and Professional Practice
- IV. Prohibited Uses of AI
- V. Student Use and Expectations
- VI. Family Engagement
- VII. Policy Review and Updates
- VIII. Appendix: Reference Circulars
- VIX: Glossary of Terms

# Engagement Process



Since March, we have engaged over 500 staff, students, families, and community partners for feedback in person and online in partnership with the offices of Technology, Teaching & Learning, Family and Community Advancement, Communications, Partnerships, Specialized Services, Multilingual Learners, Boston Student Advisory Council, and more

 [Online surveys](#) in 10 major BPS languages open until the end of May 2026

Upcoming sessions with unions, families, and Parent University in person and online



# What We've Heard



## Values Considerations

Strong perception that the policy is thoughtful, comprehensive, and aligned to district values; agreement that AI should support, not replace, human judgment

Mixed trust in AI, with concerns about privacy, bias, environmental impact, and reduced critical thinking

## Policy and Procedures

Strong call for district-wide guidance on AI citation and disclosure norms

Clarity on data privacy and what data can and cannot be used with AI tools

Need for explicit expectations around appropriate vs. inappropriate student use

## Training and Capacity Building

Clear need for required, systemwide training for staff and students

Need for transparency and ongoing dialogue

Need for student and family supports including resources and trainings

# Next Steps



**May 2026:** Open Feedback Period (Staff, Students, Families, and Partners)

**June 2026:** School Committee Vote on AI Policy; Launch of AI FAQs

**Summer 2026:** Launch new and updated learning and implementation resources for teachers, students, and families; update AI Guidelines; launch of AI FAQs

**SY26-27:** Launch Digital Literacy and AI Literacy resources for students & families

# Appendix



# Timeline of AI in BPS



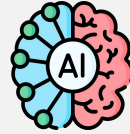
<b>Spring 2023</b>	Launched first AI webinars on Demystifying AI
<b>Fall 2023</b>	First <a href="#">AI Guidance</a> released
<b>Fall 2023 - present</b>	Ongoing professional learning courses, webinars, and custom PDs at schools
<b>Fall 2024</b>	Launched Gemini for all BPS Staff
<b>Dec 2024 - present</b>	Joined AIxCoherence Academy with Education First
<b>February 2025</b>	Solara launched in Panorama with Multi-Tiered Systems of Support (MTSS) Coordinators
<b>May - June 2025</b>	BPS AI Fellows Cohort 1 (36 participants across schools and departments)
<b>Aug 2025</b>	Launched <a href="#">AI Hub website</a> , <a href="#">v2 of AI Guidelines</a> , asynchronous Demystifying AI course for all staff, and updated approved AI tools list for staff and students
<b>March - April 2026</b>	BPS AI Fellows for Central Office (15 participants across departments)
<b>March 2026</b>	AI Policy draft open for comment
<b>March 2026</b>	AI Literacy grant announced to bring AI literacy to all BPS high school students
<b>April 2026</b>	Demystifying AI Training for All BPS School Leaders and Regional Liaisons
<b>April 2026</b>	“Build with AI” Student Day of AI Event (14 high schools participating)

# Using AI Responsibly



## Check for Bias & Accuracy:

Always review your content before sharing.



## Your Judgment Matters:

Treat AI-generated content as a starting point, not a final solution.



## Protect Privacy:

Don't include personal student details (especially with free tools!).



## Know the Limits:

The AI's knowledge is limited by the training data.



## Use with Purpose:

Think about how & when you are using AI. Is the use justifiable?



## Be Transparent:

Disclose/cite your use of AI, including what tool was used and how.

# Highlights of AI Work



## Professional Learning (2023-present)

- Demystifying AI foundational AI course completed online by 3,000 staff and in person by several hundred staff
- Ongoing webinars, resources, and in person trainings year-round on approved tools, ethics, and responsible use

## AI Fellows (2025-present)

- Cohort learning model where staff used AI to solve a Problem of Practice - [36 Instructional Fellows](#) and 15 Operational Central Office Fellows

## Solara

### Purpose-Driven, Secure AI Chatbot in our MTSS tool, Panorama (2025-present)

- Trained staff across all BPS schools on how to use Solara's district and school-based custom tools aligned with BPS Quality School Plan (QSP)

## Student Learning (2026)

- Build with AI Student Event at MIT 4/17/26 with 11 BPS high schools and ~100 students participating
- Funding to build AI literacy in secondary schools

# BPS AI Hub (Main AI Website)



 [bit.ly/bps-ai-hub](https://bit.ly/bps-ai-hub)

- Guidelines for Use of AI in BPS
- List of approved tools
- PD resources
- School AI Toolkit
- FAQ and more!