



Heritage Middle School

Welcomes the Class of 2032

"It Happens at Heritage"

Differences Between MPM & HMS



World Language

Core academic class you see every day



Select Elective Classes

Grade 7: Choice of music ensembles or Project Art
In Grade 8, these options continue to expand



School Sports

Participate in athletics program competing against other schools.
Certain teams will host tryouts to set final rosters



World Language



2-Year Program (Grades 7 & 8)

The experience is equivalent to a Level-1 high school course. The language chosen in 7th grade must be continued in 8th grade to complete the course.

Language Choices:



- Spanish
- French
- Chinese
- Italian



Academics - What's Different?

Mathematics

- ❑ 7th grade placement is based upon: Marking period grades, teacher recommendation, placement exam score, standardized test scores.
- ❑ Placement can change mid-year if grades reflect student is struggling or exceeding expectations.
- ❑ Students are re-evaluated in 7th grade to determine 8th grade placement.



7th Grade Courses	8th Grade Courses
Pre-Algebra B	Intro to Algebra and Geometry
Pre-Algebra A	Algebra I (not on team)
Algebra I (not on team)	Geometry (not on team)



School Hours

7:45 AM

Building open for students

8:20 AM

Must be in Homeroom

3:09 PM

End-of-Day dismissal

4:05 PM

Late bus (Tu/W/Th)

Early Meetings (7:30 AM): Clubs, intramurals, G/T Art, Music
Consistent attendance and being punctual is important.



What does the day look like?



Nine (9) Periods.

Each
42-minutes
long.



5 CORE Classes

ELA, Math, Science, Social Studies
& World Language

First 3 Blocks:
2 Core Classes
(7th grade
PE/Health in AM)

Period 5:
All students
have a Core
Class

Last 3 Blocks:
2 Core Classes
(Marking
Period Cycle)



**Lunch &
Enrichment
Periods**
(Middle of
the Day)



Students on Teams



Please note: Due to volume, no requests for specific teams, peers, or teachers can be accepted.

ROTATING BELL SCHEDULE

A

B

C

	7th Grade	8th Grade
HB	Homeroom 8:20 - 8:28	
1	8:31 - 9:13 Core 1 PE	8:31 - 9:13 Core 1 Cycle
2	9:16 - 9:58 Core 1/2 PE	9:16 - 9:58 Core 1/2 Cycle
3	10:01-10:43 Core 1/2 PE	10:01 - 10:43 Core 1/2 Cycle
4	10:46 - 11:26 Lunch	10:46 - 11:26 Enrichment
5	11:29 - 12:11 Core 3	11:29 - 12:11 Core 3
6	12:14 - 12:54 Enrichment	12:14 - 12:54 Lunch
7	12:57 - 1:39 Core 4 Cycle	12:57 - 1:39 Core 4 PE
8	1:42 - 2:24 Core 4/5 Cycle	1:42 - 2:24 Core 4/5 PE
9	2:27 - 3:09 Core 4/5 Cycle	2:27 - 3:09 Core 4/5 PE

	7th Grade	8th Grade
HB	Homeroom 8:20 - 8:28	
2	8:31 - 9:13 Core 1/2 PE	8:31 - 9:13 Core 1/2 Cycle
3	9:16 - 9:58 Core 1/2 PE	9:16 - 9:58 Core 1/2 Cycle
1	10:01-10:43 Core 1 PE	10:01 - 10:43 Core 1 Cycle
4	10:46 - 11:26 Lunch	10:46 - 11:26 Enrichment
5	11:29 - 12:11 Core 3	11:29 - 12:11 Core 3
6	12:14 - 12:54 Enrichment	12:14 - 12:54 Lunch
8	12:57 - 1:39 Core 4/5 Cycle	12:57 - 1:39 Core 4/5 PE
9	1:42 - 2:24 Core 4/5 Cycle	1:42 - 2:24 Core 4/5 PE
7	2:27 - 3:09 Core 4 Cycle	2:27 - 3:09 Core 4 PE

	7th Grade	8th Grade
HB	Homeroom 8:20 - 8:28	
3	8:31 - 9:13 Core 1/2 PE	8:31 - 9:13 Core 1/2 Cycle
1	9:16 - 9:58 Core 1 PE	9:16 - 9:58 Core 1 Cycle
2	10:01-10:43 Core 1/2 PE	10:01 - 10:43 Core 1/2 Cycle
4	10:46 - 11:26 Lunch	10:46 - 11:26 Enrichment
5	11:29 - 12:11 Core 3	11:29 - 12:11 Core 3
6	12:14 - 12:54 Enrichment	12:14 - 12:54 Lunch
9	12:57 - 1:39 Core 4/5 Cycle	12:57 - 1:39 Core 4/5 PE
7	1:42 - 2:24 Core 4 Cycle	1:42 - 2:24 Core 4 PE
8	2:27 - 3:09 Core 4/5 Cycle	2:27 - 3:09 Core 4/5 PE

Enrichment Period: What Goes On?

Daily Enrichment Activities

Students are assigned a team teacher for this period:

- Sustained Silent Reading (first 20 mins)
- Media Center access
- Time for independent work
- Receive extra help from teachers

Elective Class Schedule Students Choose to Participate

Classes meet on M/W or T/Th (alternating Fridays):

- Band
- Chorus
- Orchestra
- Project Art (Space is limited; seating done via lottery system)

Select Ensembles

Select Ensembles are also available for students who are interested. Tryouts are at the beginning of the school year.

Select Chorus

meets @ 7:30 AM

Select Orchestra

meets @ 7:30 AM

Jazz Band

(Jr. Lancer & Green)
meets after school

To participate, you must be enrolled in the regular ensemble for that particular program.



7th Grade Project Art

- Full year class
 - Meet every other day for the entire school year
- More in-depth projects
- Use a variety of materials
 - 2D and 3D art
 - Colored pencils, oil pastels, paint, printmaking, metal art, watercolor, sculpture



7th Grade Project Art

BOOK MAKING



OIL PASTELS



WATERCOLOR



PAINTING



COLORED PENCILS

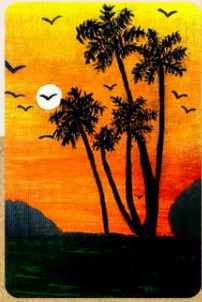


DRAWING



METAL ARTS

PRINTMAKING



Gifted and Talented

- ❖ **Students who are already enrolled in the GT Art and or the GT Academic Program at MPM - they automatically transfer over and stay enrolled when they come to HMS**
 - Those who wish to test into one or both of these programs will be notified of when the testing will be taking place via email from Mrs. Mara Rubin (GT Art) and Dr. Dorian Gemellaro (GT Academics)
- ❖ **GT Art meets on set days during the mornings before school (typically beginning at 7:25 am)**
 - For example: students will be assigned a day and that day will be “their day” to be involved in the program (ie: Tuesdays of every week)
- ❖ **GT Academics program will continue to be offered for students at Heritage, having multiple offerings be available to students during the school day and throughout the school year**

Co-Curricular Clubs

- Fall Drama and Spring Musical
- Tech & Engineering Club
- Garden Club
- MATHCounts
- Science Olympiad
- Chess Club
- Spectrum Club
- Black Student Union (BSU)
- Student Council
- Future Business Leaders (FBLA)
- Blues Improv Club
- Quiz Bowl
- Youth Environmental (YES)

- Yearbook
- Anime Club
- Stock Market Game
- Booked for Lunch
- Ski Club (trips in the Winter)
- Builders Club
- Forensics
- Jewish Heritage Club
- Alliance for Student Equity
- Muslim Student Assoc.

Find More Info



Full Club Brochure
[Available Here](#)

Explore our diverse range of student-led organizations and find your community!



Student Devices

- ❖ Students will keep their devices that they received and used during this current school year
- ❖ Students are expected to arrive to school with their devices **fully charged**
- ❖ Students who do not meet that expectation will be given a warning at first; any subsequent violation will result in reflection time being assigned to formulate a plan to remedy the situation



Transitions Between Classes

Expectations

- Students transition to and from classes without the use of a drawstring bag/backpack
- Planned locker visits
- Teach students to prioritize what they need vs. what they do not need
- Reduce # of tardies between class periods
- Reduce # of physical altercations in the hallways

What Students Can Use to Assist w/ Carrying Their Belongings

- Case-it (excellent organizational tool for middle schoolers)
- Binders for one or more than one subject
- Pencil cases and or small bags to assist with carrying personal items

Heritage Interscholastic Sports Program

Registration Requirements



Yearly Physical Required

A yearly physical is required to be eligible to participate.

[Download Sports Forms Here](#)



Documentation

Complete the Pre-Participation Physical Examination and Health History Questionnaire.



Submission

All forms must be submitted to the **HMS Main Office**.

Parents must register their child in Genesis for the Sport they wish to participate in



Deadline

Forms for fall sports are due by the **middle of August**. Additional deadlines will be communicated for the Winter and Spring

HMS Athletics / School Sports Program

Fall Sports

- Boys & Girls Soccer*
- Cross Country (coed)
- Girls Field Hockey*
- Girls Tennis*

Winter Sports

- Boys & Girls Basketball*
- Boys & Girls Volleyball*

Spring Sports

- Boys Baseball*
- Girls Softball*
- Boys & Girls Lacrosse*
- Boys Tennis*
- Track & Field (coed)

* = Tryouts are involved

Intramural Sports Program

For students looking for a fun, non-competitive way to stay active after school without the commitment of interscholastic sports.

When We Meet
Before & After School Sessions

Program Offerings

- Flag Football
- Basketball
- Volleyball
- Futsal
- Floor Hockey
- Handball & Speedball
- Fitness Room

HMS Activity Fee

- Livingston Public Schools charges a \$100, one-time activity fee for students who participate in the following before/afterschool activities:
 - HMS Sports
 - HMS Intramurals
 - HMS Co-Curricular Clubs (only those where the advisor draws a stipend; many of our clubs are run voluntarily by our staff)
- ➔ Notification of the assessment of this fee comes directly from the school principal
- ➔ Payment for this can be made via your MySchoolBucks Account or by sending in a check made payable to Livingston Public Schools

Highlights from our Jr. Lancer Cup Competition





School Visits – Walking Their Schedule

- ❖ Tuesday, August 25th- a Signup Genius will be sent out during the Summer with times (afternoon sessions will be offered between 1-3 p.m.)
- ❖ Students will have the opportunity to “walk” their schedules from class to class and familiarize themselves with different aspects of the building
- ❖ Staff will be available to assist the students with navigating the building.



Parent Homework - Course Selection

- ❖ All parents must log into their Parent Genesis Accounts and complete the request for World Language choice:
 - Please mark a **1st and 2nd choice (Priority 1 and 2)** for World Language

- ❖ Parents may also choose to enroll their child in **up to 2** of the following courses:
 - Band, Chorus, Orchestra, & Project Art
 - These courses are optional. If you do not want your child enrolled in one or more of these simply leave the section blank, and do not make a selection.
 - Refer to the attachment in the email communication for screenshots and guidance to making selections in the Genesis Parent Portal