

SOCIAL MEDIA

The Impact of Smartphone Use on Teens



MENTAL HEALTH TRENDS

Teens spend an average of 8 hours per day on screens, which has led to significant mental, emotional and social challenges.

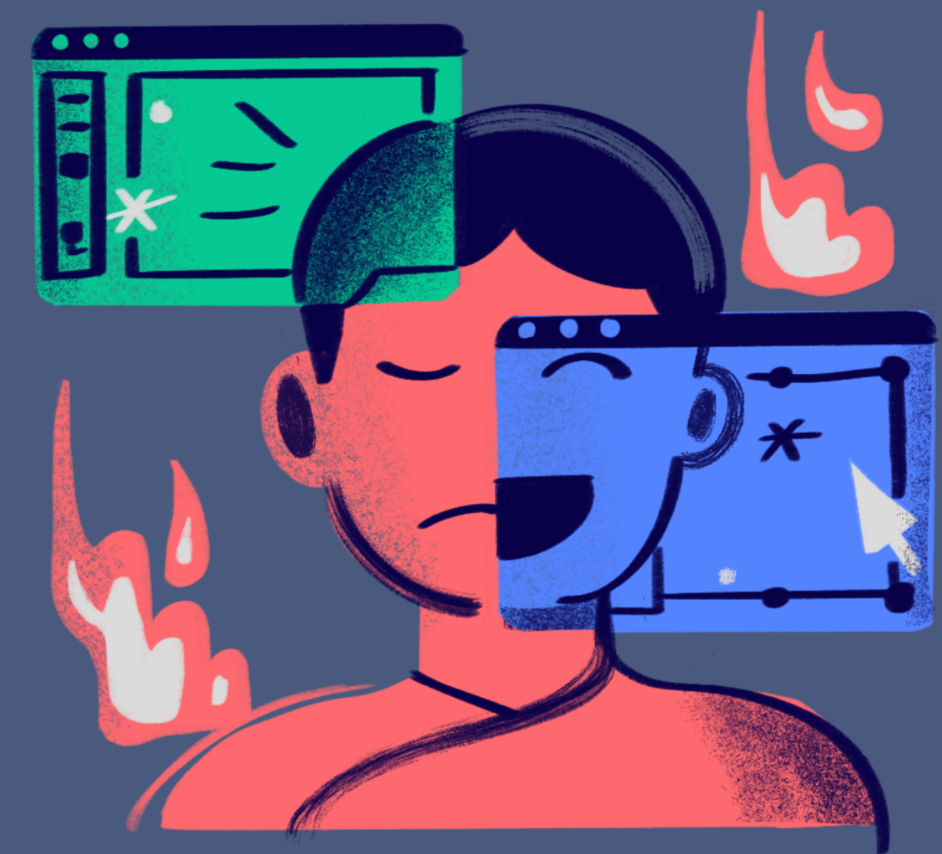
Mental Health Trends (2012-2019)

Adolescent depression increased by 50%

Self Harm rates among pre-teen girls rose by 150%

Childhood Shift:

A transition from play-based activities to screen-based lifestyles has negatively impacted social skills, resilience, and self-image



Key Challenges Facing Teens

Resilience

Teens are fearful of failure, which hinders personal growth.

Perfectionism prevents risk-taking, a critical part of learning and developing resilience.

Example: The "Throw the Buoy" approach—parents or mentors can guide teens but must encourage them to make their own efforts to overcome challenges.

Self-Image

Social media creates unrealistic beauty and body standards.

Girls: Influenced by apps like Instagram and TikTok, they often compare themselves to filtered, edited images, leading to insecurity and a desire for cosmetic surgery as early as age 13.

Boys: Often isolate themselves with gaming and feel pressured to take substances like steroids or supplements to meet unattainable physiques.

Social apps and gaming environments foster unrealistic ideals and reduce outdoor activities or meaningful interactions.

Social Skills

Teens are increasingly disconnected and struggle to build and maintain friendships.

Fear of judgment leads to avoidance of face-to-face communication.

Many teens avoid conflict or personal interactions, preferring email or messaging instead of in-person conversations.

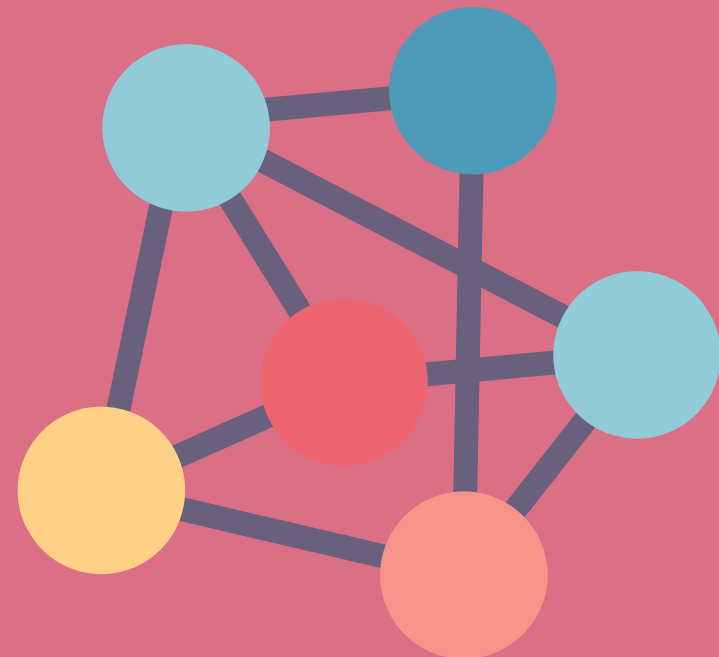
Group therapy reveals growing difficulty in forming warm, empathetic connections.



The Role of Social Media Algorithms



Social media apps use algorithms to maximize engagement, beginning with data collection during setup (age, gender, location, and interests). These platforms track user behavior, such as likes, searches, and time spent on posts, to tailor feeds.



Negative Effects of Algorithms:

Addiction and excessive use.
Polarization and echo chambers.
Spread of misinformation.
Overexposure to influencers and commercial pressures.

Goals of Algorithms:

Keep users engaged longer by personalizing content.
Test new content to expand user interests subtly.

How Social Media Algorithms Work

Social media platforms like Instagram, TikTok, Facebook, and YouTube use algorithms to personalize user experiences and keep users engaged for as long as possible. Here's how they function:

Data Collection

When a user sets up an account, the app begins collecting personal data

Demographics: Age, gender, location, and interests.

Behavioral Data: Tracks activity across platforms, including:

What you like, share, or comment on.

Which accounts you follow.

How much time you spend on posts, videos, or stories.

Tracking Across Websites: Many apps request permission to track user activity outside the app (e.g., browsing history, Google searches).



Content Ranking

Algorithms prioritize posts based on ranking signals such as:

Engagement History: Posts similar to those you've liked, commented on, or saved are given priority.

Time of Day: Content is shown when you're most likely to be active.

Diversity of Content: Algorithms test new, slightly different content to keep users interested or explore new preferences.

The Ultimate Goal of Algorithms

To maximize user engagement and time spent on the platform, which directly boosts:

Ad Revenue:

The longer users stay on the app, the more ads they see.

Data Collection:

Continuous interaction allows companies to refine their ad targeting for higher profits.

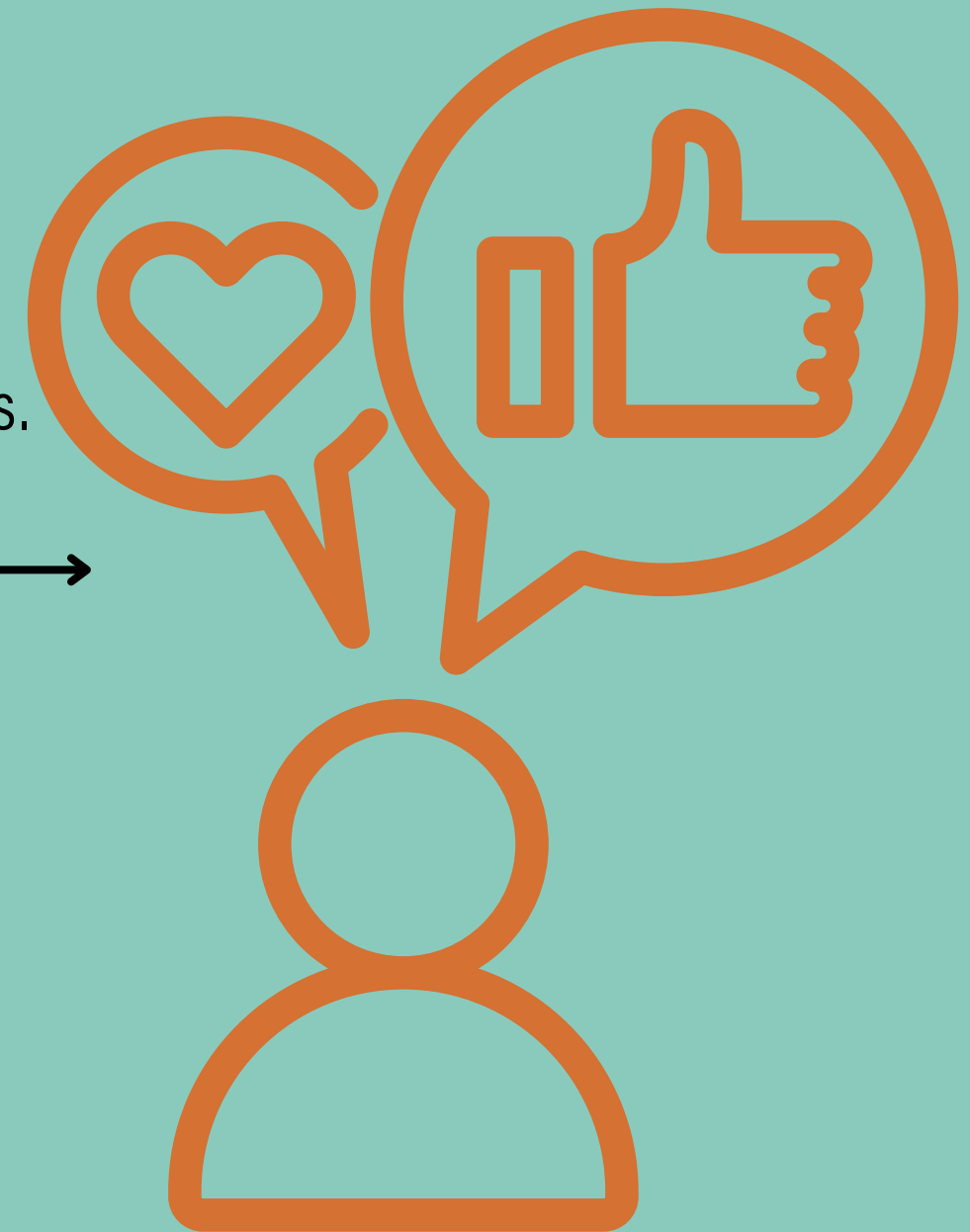
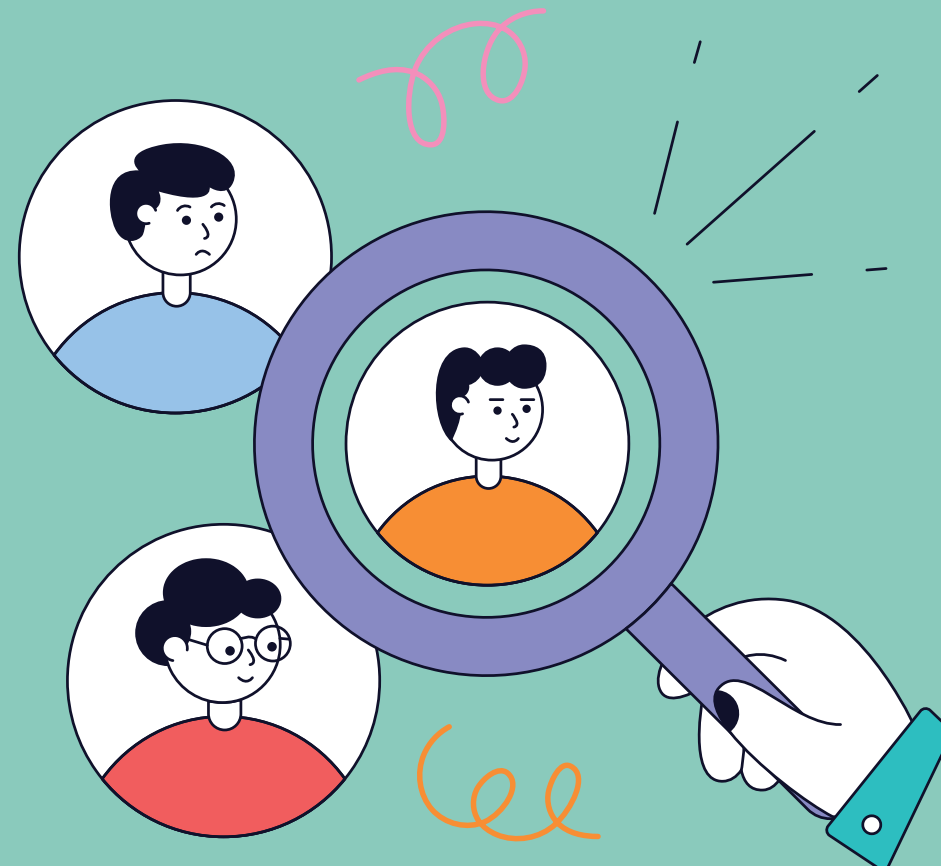


Personalization:

The goal is to make each user's feed unique and engaging. To achieve this, algorithms:

Learn from past behavior to predict future preferences.

Adjust in real-time to changes in user activity (e.g., new searches or likes).



Negative Effects of Algorithms

To maximize user engagement and time spent on the platform, which directly boosts:

Addiction and Overuse

Platforms are designed to exploit psychological triggers (dopamine release) to keep users scrolling. Endless feeds, notifications, and content refreshes create a “reward cycle,” making it hard to log off.

Influencer and Brand Overload

Teen users are constantly exposed to influencers promoting unrealistic lifestyles, beauty standards, or consumerism. This overexposure can lead to comparison, dissatisfaction, and materialistic values.



Polarization and Echo Chambers

Algorithms show content that aligns with your views, creating “echo chambers” where opposing perspectives are rarely seen.

This can reinforce biases, increase divisions, and contribute to extreme viewpoints.

Spread of Misinformation

Content that provokes strong emotions (e.g., outrage, fear) often performs well in terms of engagement.

Algorithms amplify this content, even when it’s false, because it keeps users engaged longer.



Why is Social Media SO Addictive

Fear of Missing Out (FOMO)

Social media exploits FOMO by showing posts about events, trends, or activities, making users feel they need to stay connected.

Hyper-Personalization

Tailored feeds keep users engaged because the content feels relevant and irresistible. Even brief moments of boredom prompt users to return to the app, knowing something new awaits.



Infinite Scroll and Auto-Play

Endless feeds and automatic video play eliminate stopping points, making it difficult for users to disengage.

Dopamine Feedback Loop

Likes, comments, and shares activate reward centers in the brain, similar to gambling or gaming. Users keep returning to chase these “rewards.”



Side Effects of Algorithms

Mental Health:

Increases anxiety, depression, and feelings of inadequacy, especially in teens. Unrealistic comparisons with curated content affect self-esteem.

Time Management:

Excessive scrolling takes time away from meaningful activities like studying, hobbies, or socializing.

Pressure to Conform:

Algorithms amplify trending challenges, looks, or behaviors, pressuring teens to fit in.

Social Disconnect:

Teens spend more time online than interacting in person, weakening real-world relationships.



By understanding how algorithms operate, parents and teens can develop strategies to counter their effects, such as setting time limits, questioning the content shown, and prioritizing offline connections. Let me know if you'd like actionable steps to mitigate these issues!

Parental Recommendations Part 1:

Set Clear Rules:

No Phones in Bedrooms at Night:
Establish a curfew and require
teens to hand over their phones
by a specific time

Teach Resilience:

Encourage teens to face challenges, handle conflicts, and
learn from mistakes.

Allow them to fail and grow instead of avoiding struggles.
Model confidence in resolving issues through face-to-face
communication.



Phone Usage Contract:

Define rules for app usage, transparency
(parents knowing passwords), and
respectful online behavior.

Make clear that phones are a privilege,
not a necessity.

Reminder that it is “your” phone as you
bought it and pay for the service.

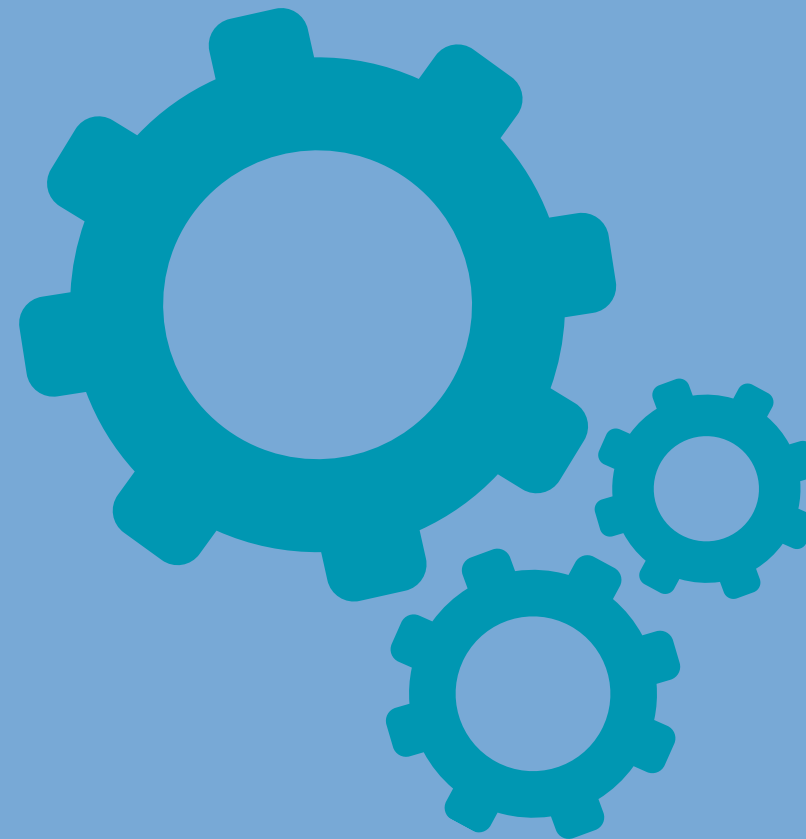
Parental Recommendations Part 2:



Digital Detox as a Family:

Periodically limit screen time and encourage outdoor activities or hobbies that don't involve technology.

Parents should model balanced phone use to set an example.



No Tech Tuesdays

Turn in your phones and enjoy the evening together as a family

Plan Ahead for Smartphone Use:

Decide as a family what apps are allowed, screen time limits, and consequences for misuse.

Setting expectations before giving a phone can reduce arguments and create a clear framework for healthy usage.

Smartphone overuse has led to a decline in teens' mental health, social skills, and resilience while creating harmful standards for self-image. Social media algorithms compound these issues by fostering addiction, misinformation, and pressure.

However, by setting clear rules, teaching resilience, and planning healthy phone use, parents can help teens navigate the digital world responsibly and maintain their emotional well-being.

