

May 3, 2026

Cockrell Connection

Be sure to follow us on facebook and instagram



SCHOOL HOURS

Grades PK-4.....7:55-3:15 PM
 Front Doors Open.....7:15 AM
 Breakfast Served.....7:15-7:50 AM
 Students Enter Class.....7:45 AM
 Class Begins.....7:55 AM

*Students must be inside the building by 7:55 AM. Students entering the building after this time will be tardy. If a student is tardy, parents are required to park and come in the lobby to sign them in.

IMPORTANT LINKS:

[Cockrell Elementary Contact List](#)

[APRIL MENU](#)

[DISTRICT CALENDAR](#)

[DRESS CODE](#)

[STAFF AFFIRMATIONS](#)

[SCHOOL SUPPLY LISTS](#)

[ABSENCE REPORTING](#)

[CAMPUS PFE POLICY](#)

[DISTRICT PFE POLICY](#)

Library Books

DUE MAY 5TH



Last Week for Lunch Visitors

Chick-fil-a Spirit Night

TOMORROW

MOVING?

GIVE US A CALL TO UPDATE YOUR RECORDS



Upcoming Dates:

- 05/4-8 TEACHER /SUBSTITUTE APPRECIATION WEEK
- 05/04 4TH GRADE FIELD TRIP
- 05/04 CHICK-FIL-A SPIRIT NIGHT
- 05/06 SCHOOL NURSE DAY
- 05/08 LAST DAY FOR LUNCH VISITORS
- 05/11-15 BOOK FAIR (FLYER BELOW)
- 05/14 PTO GENERAL ASSEMBLY MEETING
- 05/18 SENIOR WALK 2PM
- 05/18 NATIONAL SPEECH PATHOLOGIST DAY
- 05/19 PRE-K - 3RD GRADE AWARDS
- 05/20 4TH GRADE AWARDS
- 05/21 EARLY RELEASE



Awards Schedule

See flyer below for details



26-27 SCHOOL SUPPLIES FLYER BELOW





Spirit Night Fundraiser

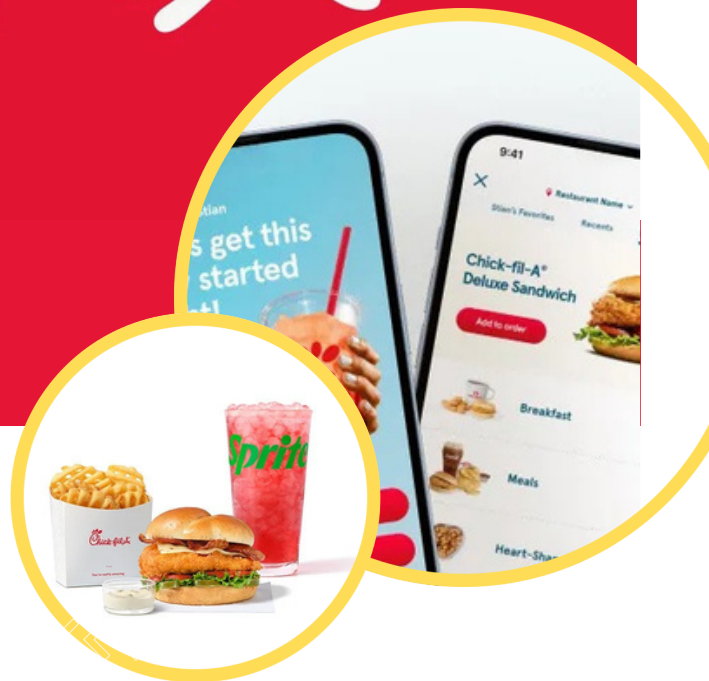
The Chick-Fil-A at Pearland Parkway and Beltway 8 will donate 20% percent of all sales through orders placed in the app using our passcode: **cockrell**



**MONDAY, MAY
4TH**

ALL DAY EVENT!

This is an APP-ONLY event! Families must order through the Chick-fil-A app. Use passcode "**cockrell**" in the pop-up window during checkout to ensure your purchase supports our school.



HOW TO PARTICIPATE

- Download the Chick-fil-A app and create an account.
- Place your mobile order in the app.
- Enter passcode "**cockrell**" in the pop-up at checkout.
- Pick up your order and enjoy!

IN APP-ONLY ORDERING ONLY!

DOWNLOAD APP: <https://one.chick-fila.com/>

11520 Pearland Parkway 

COCKRELL

Awards

 **TUESDAY MAY 19, 2026**

1ST GRADE

9:30-10:00

PEARS

10:10-10:40

PRE-K

11:00-11:30

3RD GRADE

11:45-12:15

KINDER

12:10-12:40

2ND GRADE

1:15-1:45

 **WEDNESDAY MAY 20, 2026**

4TH GRADE

8:30AM

DUE TO CAPACITY LIMITATIONS WE ASK THAT YOU LIMIT VISITORS TO 2 PER STUDENT. NO STROLLERS OR SIBLINGS. THERE WILL BE NO LUNCH VISITORS ON THIS DAY.

[CLICK HERE FOR FAST PASS](#)



COCKRELL BOOK FAIR

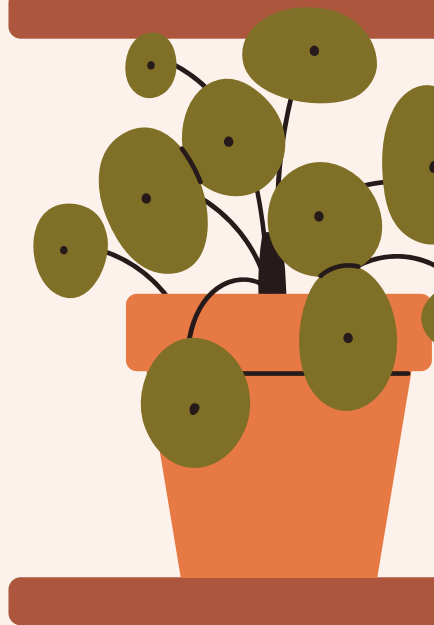
MAY 11-15

MAY 11-13, 8-3

MAY 14, 8-4:45

3:45- PTO MEETING

MAY 15, 8-10AM



We accept cash, credit cards, eWallets, and checks made payable to Cockrell. Please remember money to cover the tax.

PTO WILL BE GIFTING EACH STUDENT \$10 TO SPEND AT THE FAIR. THIS MONEY CAN BE COMBINED WITH THEIR OWN AS WELL. MONEY MUST BE SPENT DURING THEIR CLASSES SHOPPING TIME THAT WEEK.



DID YOU FORGET TO ORDER THE YEARBOOK?



YOU PAY

\$35 +

SHIPPING

QUESTIONS?

YEARBOOK@COCKRELLPTO.ORG

DON'T WORRY WE'VE GOT YOU!

HERE'S THE DETAILS:

- if you order between now and May 8th, your yearbook will be shipped to the school
- if ordered after May 8th, it will be shipped to your home address
- estimated delivery is 1 to 2 weeks

QUESTIONS?

YEARBOOK@COCKRELLPTO.ORG

HOW DO I ORDER?

CREATE A TREERING ACCOUNT

- Treering is our new Yearbook Publisher
- Scan the QR code
- OR sign up through the app



SCHOOL CODE:
1017180435771454

PRE-K & KINDERGARTEN

WHAT DOES MY CHILD NEED TO KNOW TO BE SUCCESSFUL IN SCHOOL

INDEPENDENCE SKILLS

- Use the restroom independently (including washing hands)
- Unbutton and button pants alone
- Open food containers and packages
- Put on and take off backpack, shoes, and jacket
- Pack up the backpack

SOCIAL SKILLS

- Follow simple directions
- Take turns and share with others
- Use words to express needs and feelings

FINE MOTOR SKILLS

- Hold a pencil, crayon, or marker correctly
- Cut with scissors
- Use glue sticks and build with small objects (Legos, puzzles, etc.)

LANGUAGE & LITERACY

- Recognize their name and attempt to write it
- **Recognize their name when someone says it and say their own name when asked**
- Identify some letters and their sounds
- Listen to and talk about stories

MATH READINESS

- Count to 10 and recognize some numbers
- Identify basic shapes and colors
- Sort and match objects by size, shape, or color

LUNCH & SNACKS

Practice opening food containers and eating independently. School lunch is available, or you may send a packed lunch. **Students will eat in the cafeteria with a large group of other students and should practice sitting for 30 minutes while eating.**

WHAT TO BRING ON THE FIRST DAY

- Backpack (regular size, no wheels)
- Extra set of clothes (labeled in a ziplock bag)
- Refillable water bottle
- Nap mat (for Pre-K)

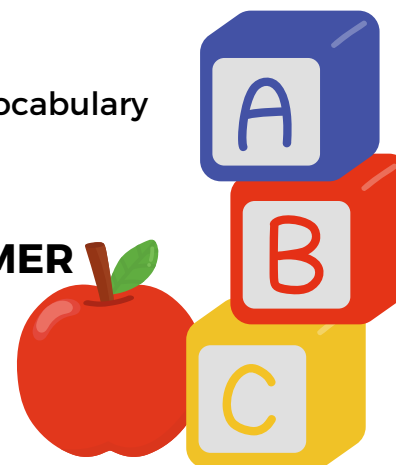
SCHOOL ROUTINE

Help your child get used to a daily schedule with consistent bedtimes and wake-up times.

READ EVERYDAY

Reading with your child daily builds vocabulary and a love of learning.

PLEASE PRACTICE THESE SKILLS OVER THE SUMMER SO THAT YOUR CHILD IS READY FOR SCHOOL!



PK & KINDER
2026-27
ENROLLMENT
OPENS MARCH 30TH!

JOIN OUR *Family!* **PEARLAND ISD**

BUILD PEARLAND Proud.

Pearland ISD Job Fair!

Join us on **Saturday, April 25, from 8:30-10:30 a.m. at Pearland High School - Searcy side** (located at 3775 South Main St) and learn about positions available at Pearland ISD.

Applicants will have the opportunity to talk to the hiring campuses and departments, fill out applications online (laptops will be available) and have onsite interviews.

Child care will be available for applicants with children (5-12 years old).

Positions Available:

- Teachers and classroom aides (at all campuses)
- Special Programs department
- Multilingual Programs
- Career and Technical Education
- Advanced Academics

Join Our Team:
Learn more about positions currently available* at:
www.pearlandisd.org/employment

*Positions available might change daily.

Are you moving over the summer?

Please contact our
Receptionist Genesis Govea
so that we can update your
records





Save Time & Money on School Supply Shopping

Exact pack items & brands customized to your school lists.

BARBARA COCKRELL ELEMENTARY

Save Over 40% on Supplies Compared to Other Online Retailers

Grade Level 2026-2027	Cost
Pre-K	\$61
K	\$61
1st	\$61
2nd	\$61
3rd	\$61
4th	\$61

Order Securely Online
Until May 19th

www.educationalproducts.com/shoppacks

Enter the school ID

COC005

(3 letters /3 numbers)

Packs will be in your child's classroom
the first day of school.

Sales tax will be applied at checkout

For questions, please contact:

Samantha Vela- secretary@cockrellpto.org

832-736-6600;

Cristen Kirksey- president@cockrellpto.org

832-736-6600



Scan QR code
and
Order Today!

Join us for the
**PEARLAND LADY OILER
BASKETBALLCAMP**

| 8:30-11:30AM SESSION II(6TH-9TH GRADE)

JUNE 15-17 | 8:30 AM-10:00 AM SESSION I (4YRS OLD-5TH GRADE)



**JOIN US FOR FUNDAMENTAL SKILLS AND
POSITION WORK TO ELEVATE YOUR GAME!
EACH CAMPER WILL RECIEVE A T-SHIRT**

JUNE 15- JUNE 17

Questions Contact Coach Adams
adamsje@pearlandisd.org

**BRING YOUR OWN
SHOES & WATER
BOTTLE**

SEarcy GYM- PEARLAND HIGH SCHOOL



**SCAN ME TO
SIGN UP**

