

COLTON JOINT UNIFIED SCHOOL DISTRICT
Purchasing Department

Bid 26-26CA
CHS Installation of A/C Rooftop Package Units

ADDENDUM NO. 1

April 28, 2026

Addendum No. 1 is issued in response to questions received from providers.

Question No. 1: Please provide quote and submittals for all OFCI (Owner Furnished Contractor Installed) Equipment for our verification.

Response: Refer to Attachment A - Equipment list / Certified drawing

Question No. 2: Please confirm that all New AC Units are to be installed on the existing curbs and that no modifications of existing curbs or platforms are to be performed

Response: If curb adapters are required, the district will provide

Question No. 3: Please confirm whether the new OFCI Equipment and accessories are to be delivered to the jobsite for crane meet.

Response: Units will be at the district warehouse 1313 West Valley Blvd - Contractor to pick up as needed

Question No. 4: Please confirm the expected date to perform work. If during the summer, please confirm the building will be unoccupied while doing the replacements.

Response: July - sites will be unoccupied

Question No. 5: Please confirm if there are existing controls, and whether there is a controls contractor. If not, please confirm that the standalone thermostats will just be reinstalled and reconnected on the new units

Response: Controls will be completed by the District

Question No. 6: Are the units going to be delivered to the campus or are we required to transport them to the campus?

Response: Units will be at the district warehouse 1313 West Valley Blvd - Contractor to pick up as needed

Question No. 7: Are we required to supply compliance certification testing for all units?

Response: No

Question No. 8: Are we required to do certified air balancing?

Response: Yes

Question No. 9: Are we required to pull permits?

Response: No

Question No. 10: Please provide a cut sheet and a detailed bill of material for all HVAC equipment and components to be furnished by the school. This information is required to clearly define the scope of owner-provided materials and to ensure that no items such as curb adapters, disconnects or other associated components are missing.

Response: *Refer to Attachment A - Equipment list / Certified drawing*

Question No. 11: Will the district provide the new HVAC units? If yes, please confirm if the new curbs and economizers for those units will also be provided by the district (and please list any additional material provided)

Response: *Yes*

Question No. 13: Can you please provide the installation manuals for all the new HVAC units?

Response: *No*

Attachment A - Equipment list / Certified drawings



CALIFORNIA COMMERCIAL
205 S. Puente St.
Brea, CA 92821
(P) (714) 578-5202

Proposal

Project Name: Colton High Auditorium

Bid Date: 09/12/2025

Expiration Date: 10/12/2025

Attention: CJUSD

Proposal Number: 0925DHEL0851

Mark For	Qty	Model Number	Description
GE RTU 1 and 2	2	48FEEM24AJA6-0A0A0	Nominal 20 Ton R454b G/E RTU, 460V-3PH <ul style="list-style-type: none"> • Standard Packaging • Medium Gas Heat • Two-Stage Cooling - Single Circuit • Al/Cu Condenser and Evaporator Coil • High Static - Vane Axial Fan - Horizontal Supply • Standard Electro-Mechanical Controls <u>Field-Installed:</u> <ul style="list-style-type: none"> • ULL Economizer w/ Barometric Relief Hood • Constant Volume Centrifugal Power Exhaust, 460V-3PH
GE RTU 3, 4, 5, 6	4	48FEEM28A3A6-0A0A0	Nominal 25 Ton R454b G/E RTU, 460V-3PH <ul style="list-style-type: none"> • Medium Gas Heat • Two-Stage Cooling - Single Circuit • Standard Packaging • High Static - Vane Axial Fan • Al/Cu Condenser and Evaporator Coil • Standard Electro-Mechanical Controls <u>Field-Installed:</u> <ul style="list-style-type: none"> • ULL Economizer • Constant Volume Centrifugal Power Exhaust, 460V-3PH • Curb Adapter – Dimensions to be Field-Verified Prior to Ordering

Pricing

Total Price for items as listed above (excluding taxes) **\$215,302.00**

Please note the following clarifications in this proposal:

- Cancellation requests for factory ordered items greater than 10 calendar days from receipt of Purchase Order will incur 100% cancellation charges.

EXCLUSIONS: (IMPORTANT-PLEASE READ):

THE FOLLOWING IS NOT INCLUDED IN THIS PROPOSAL:

UNITARY PACKAGED ROOFTOPS

BACNET/ EMS CARDS/ INTERFACE OR THERMOSTATS/CONTROLS

INTEGRATION ASSISTANCE

VIBRATION ISOLATION, PLATFORMS OR ROOFCURBS

CO₂ SENSORS/DEMAND CONTROL VENTILATION SYSTEMS

COPPER COILS OR COIL COATINGS

HAIL GUARDS/ COIL GUARDS

HIGH SCCR RATING

DISCONNECTS, CONVENIENCE OUTLETS, SMOKE DETECTORS

CONDENSATE OVERFLOW SWITCH

FILTER STATUS SWITCH

HOT WATER COIL/ ELECTRIC HEAT ADDITIONAL COIL

HOT GAS REHEAT

UVC LIGHTS/ ION GENERATORS

MERV FILTERS, ADDITIONAL/SPECIAL FILTERS, PULLEY/BELT/MOTOR CHANGES FOR AIR BALANCE REPORTS

EXTENDED PARTS WARRANTIES

START-UP OR LABOR WARRANTY UNLESS SPECIFICALLY MENTIONED

ANY ITEMS NOT LISTED ABOVE



SUBMITTAL

Project

Colton High Auditorium

Date

Friday, September 12, 2025

Table Of Contents

Project: Colton High Auditorium
Prepared By:

09/12/2025
03:25PM

GE RTU 1 and 2	3
Unit Report.....	4
Certified Drawing.....	5
Performance Summary.....	9
GE RTU 3, 4, 5, 6	12
Unit Report.....	13
Certified Drawing.....	14
Performance Summary.....	18

GE RTU 1 and 2

Project: Colton High Auditorium
Prepared By:

09/12/2025
03:25PM

GE RTU 1 and 2

**Tag Cover Sheet
Unit Report
Certified Drawing
Performance Report**

Unit Report For GE RTU 1 and 2

Project: Colton High Auditorium
 Prepared By:

09/12/2025
 03:25PM

Unit Parameters

Unit Model:.....**48FEEM24AJA6-0A0A0**
 Unit Size:.....**24 (20 Tons)**
 Volts-Phase-Hertz:.....**460-3-60**
 Heating Type:.....**Gas**
 Refrigerant:.....**R-454B**
 Heat Control:.....**Medium Heat**
 Duct Cfg:.....**Horizontal Supply / Horizontal Return**
 DX Options:.....**Two Stage Cooling, Single Circuit**

Dimensions (ft. in.) & Weight (lb.) ***

Unit Length:.....**11' 9.5"**
 Unit Width:.....**7' 2.375"**
 Unit Height:.....**3' 11.75"**
Total Operating Weight:.....2367 lb

*** Weights and Dimensions are approximate. Weight does not include unit packaging. Approximate dimensions are provided primarily for shipping purposes. For exact dimensions and weights, refer to appropriate product data catalog.

Lines and Filters

Gas Line Size:.....**3/4**
 Condensate Drain Line Size:.....**3/4**
 Return Air Filter Type:.....**Throwaway**
 Return Air Filter Quantity:.....**9**
 Return Air Filter Size:.....**16 x 25 x 2**

Selection includes construction throwaway filter into the base fan curve.

Unit Configuration

Medium Heat
 High Static Option - Horizontal Supply
 Al/Cu - Al/Cu
 Standard Electromechanical Controls
 Standard Packaging
 UL60335-2-40 approved R-454B Dissipation board and leak sensor included as standard

Warranty Information

1-Year parts(std.)
 5-Year compressor parts(std.)
 10-Year heat exchanger - Aluminized(std.)

No optional warranties were selected.

NOTE: Please see Warranty Catalog 500-089 for explanation of policies and ordering methods.

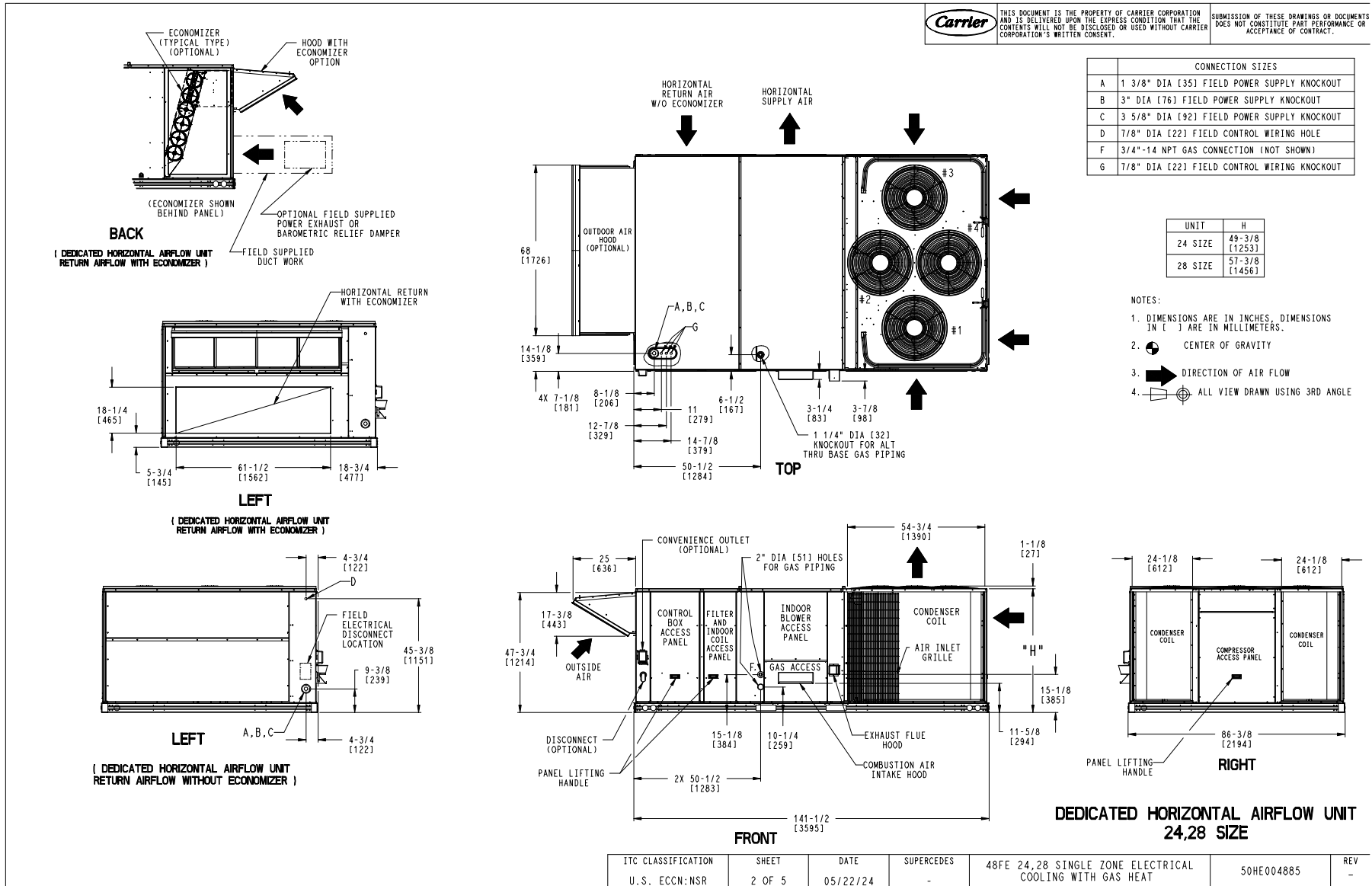
Ordering Information

Part Number	Description	Quantity
48FEEM24AJA6-0A0A0	Rooftop Unit	1
Field Installed Accessories		
CRPWREXH069A00	Power Exhaust	1
CRECOMZR113A00	CH 6-7 ULL Economizer w/POL224	1
CRBARHOD001A00	Barometric Hood	1

Certified Drawing for GE RTU 1 and 2

Project: Colton High Auditorium
Prepared By:

09/12/2025
03:25PM



Certified Drawing for GE RTU 1 and 2

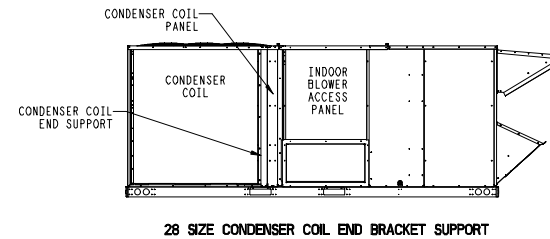
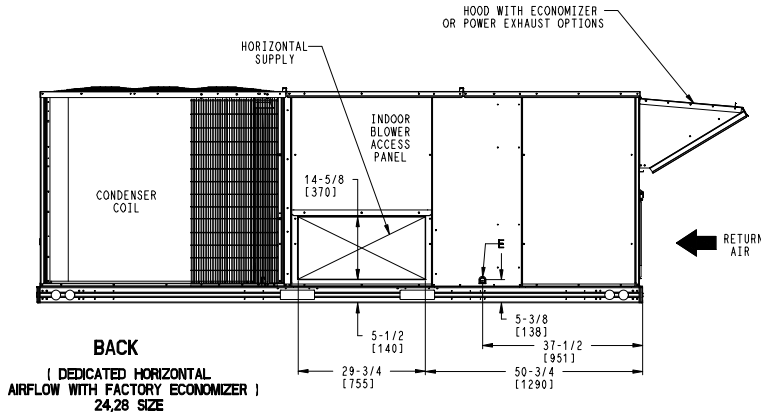
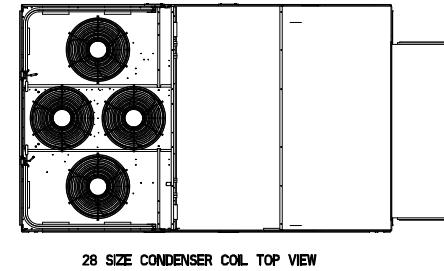
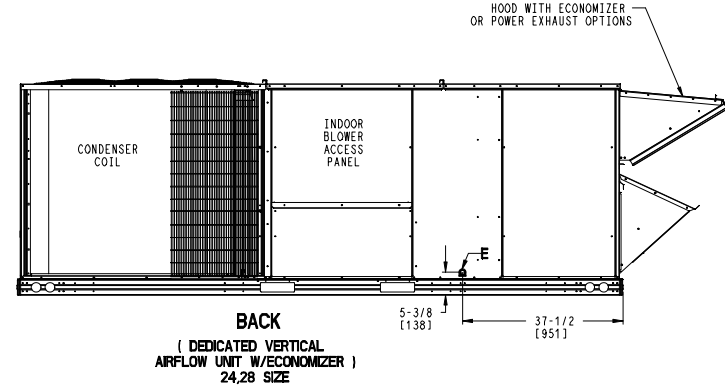
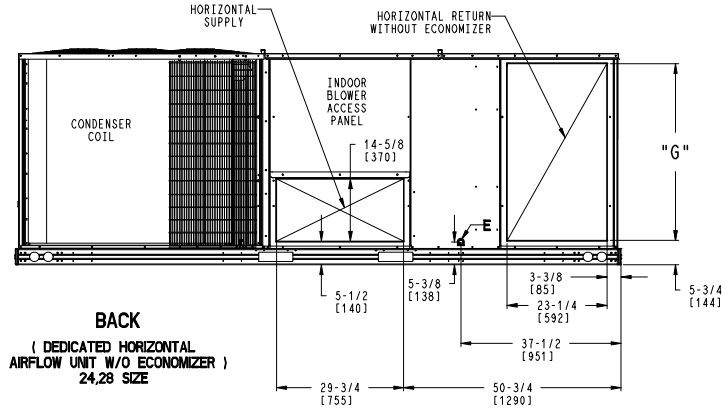
Project: Colton High Auditorium
Prepared By:

09/12/2025
03:25PM

CONNECTION SIZES	
E	3/4"-14 NPT CONDENSATE DRAIN

Carrier THIS DOCUMENT IS THE PROPERTY OF CARRIER CORPORATION AND IS DELIVERED UPON THE EXPRESS CONDITION THAT THE CONTENTS WILL NOT BE DISCLOSED OR USED WITHOUT CARRIER CORPORATION'S WRITTEN CONSENT. SUBMISSION OF THESE DRAWINGS OR DOCUMENTS DOES NOT CONSTITUTE PART PERFORMANCE OR ACCEPTANCE OF CONTRACT.

UNIT	G
24 SIZE	41-3/8 [1049]
28 SIZE	49-1/4 [1251]



ITC CLASSIFICATION	SHEET	DATE	SUPERCEDES	48FE 24,28 SINGLE ZONE ELECTRICAL COOLING WITH GAS HEAT	50HE004885	REV
U. S. ECCN: NSR	3 OF 5	05/22/24	-			-

Certified Drawing for GE RTU 1 and 2

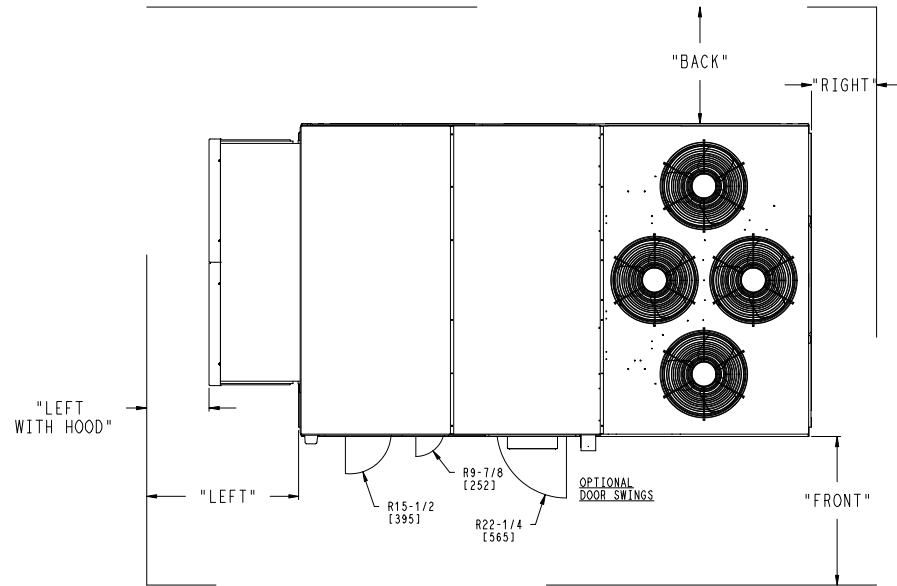
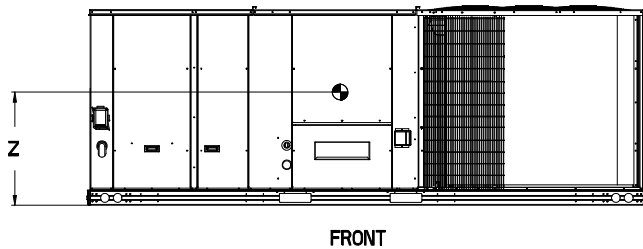
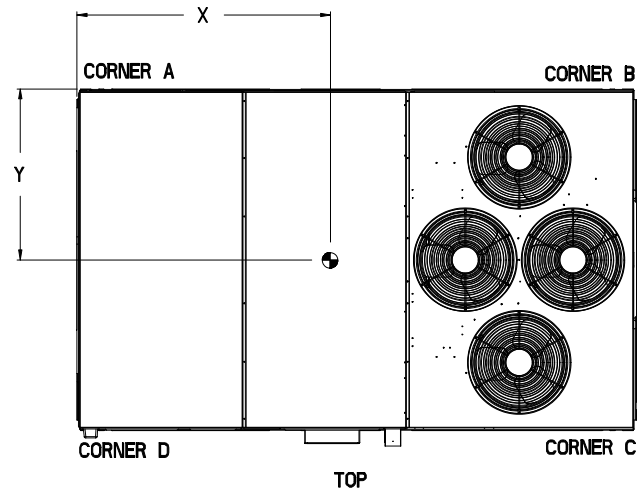
Project: Colton High Auditorium
Prepared By:

09/12/2025
03:25PM

UNIT	STD UNIT WEIGHT *		CORNER WEIGHT (A)		CORNER WEIGHT (B)		CORNER WEIGHT (C)		CORNER WEIGHT (D)		C.G.					
	LBS.	KG.	LBS.	KG.	LBS.	KG.	LBS.	KG.	LBS.	KG.	X	Y	Z			
48FE 24	2000	907	429	195	505	229	576	261	489	222	76 1/2	[1943]	46	[1168]	16 1/2	[419]
48FE 28	2174	986	458	208	583	264	634	288	498	226	79 1/4	[2013]	45	[1143]	19	[483]

Carrier THIS DOCUMENT IS THE PROPERTY OF CARRIER CORPORATION AND IS DELIVERED UPON THE EXPRESS CONDITION THAT THE CONTENTS WILL NOT BE DISCLOSED OR USED WITHOUT CARRIER CORPORATION'S WRITTEN CONSENT. SUBMISSION OF THESE DRAWINGS OR DOCUMENTS DOES NOT CONSTITUTE PART PERFORMANCE OR ACCEPTANCE OF CONTRACT.

* STANDARD UNIT WEIGHT IS WITH LOW GAS HEAT AND WITHOUT PACKAGING. FOR OTHER OPTIONS AND ACCESSORIES, REFER TO THE PRODUCT DATA CATALOG.



NOTES:

1. CLEARANCE ABOVE THE UNIT TO BE 72"
2. FOR ALL MINIMUM CLEARANCES LOCAL CODES OR JURISDICTIONS MAY PREVAIL.

SURFACE	SERVICE WITH		OPERATING CLEARANCE
	CONDUCTIVE BARRIER	NONCONDUCTIVE BARRIER	
FRONT	48 [1219mm]	36 [914mm]	18 [457mm]
LEFT	48 [1219mm]	42 [1067mm]	18 [457mm]
BACK	42 [1067mm]	36 [914mm]	18 [457mm]
LEFT WITH HOOD	36 [914mm]	36 [914mm]	18 [457mm]
RIGHT	36 [914mm]	36 [914mm]	18 [457mm]
TOP	72 [1829mm]	72 [1829mm]	72 [1829mm]

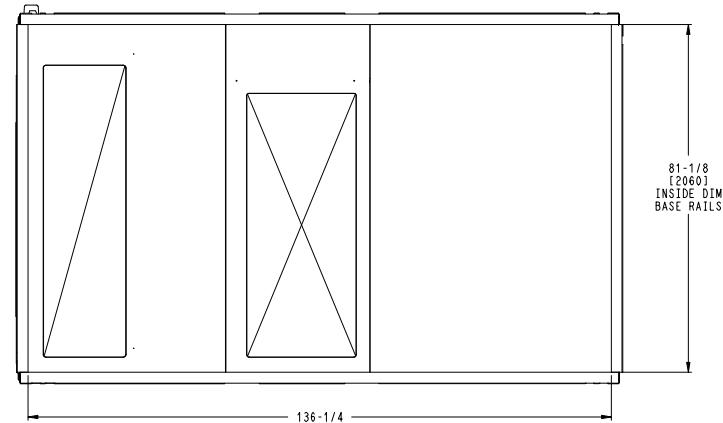
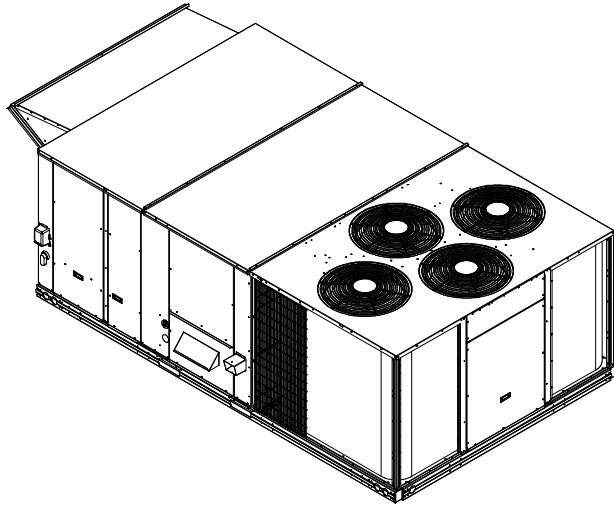
ITC CLASSIFICATION U.S. ECCN: NSR	SHEET 4 OF 5	DATE 05/22/24	SUPERCEDES -	48FE 24,28 SINGLE ZONE ELECTRICAL COOLING WITH GAS HEAT	50HE004885	REV -
--------------------------------------	-----------------	------------------	-----------------	---------------------------------------------------------	------------	----------

Certified Drawing for GE RTU 1 and 2

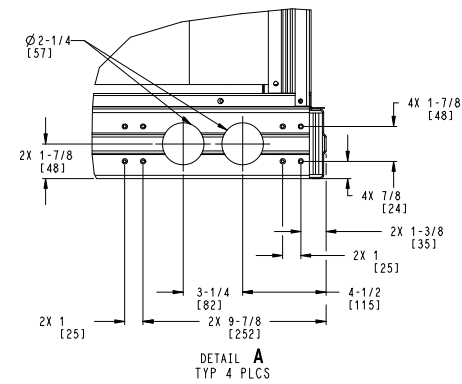
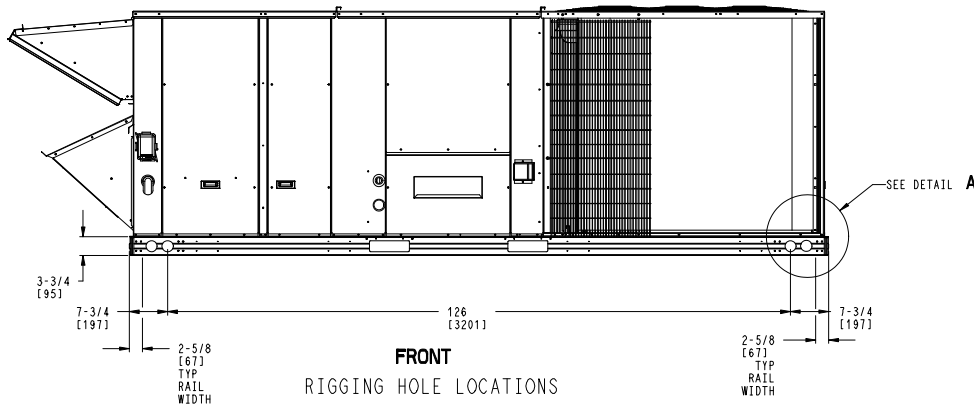
Project: Colton High Auditorium
Prepared By:

09/12/2025
03:25PM

	THIS DOCUMENT IS THE PROPERTY OF CARRIER CORPORATION AND IS DELIVERED UPON THE EXPRESS CONDITION THAT THE CONTENTS WILL NOT BE DISCLOSED OR USED WITHOUT CARRIER CORPORATION'S WRITTEN CONSENT.	SUBMISSION OF THESE DRAWINGS OR DOCUMENTS DOES NOT CONSTITUTE PART PERFORMANCE OR ACCEPTANCE OF CONTRACT.
-------------------------------------------------------------------------------------	-------------------------------------------------------------------------------------------------------------------------------------------------------------------------------------------------	-----------------------------------------------------------------------------------------------------------



BOTTOM
INSIDE BASERAIL DIMENSIONS



ITC CLASSIFICATION	SHEET	DATE	SUPERCEDES	48FE 24,28 SINGLE ZONE ELECTRICAL COOLING WITH GAS HEAT	50HE004885	REV
U. S. ECCN: NSR	5 OF 5	05/22/24	-			-

Performance Summary For GE RTU 1 and 2

Project: Colton High Auditorium
 Prepared By:

09/12/2025
 03:25PM

Part Number: 48FEEM24AJA6-0A0A0

Refrigerant:..... **R-454B**
 ARI EER:..... **10.00**
 IEER:..... **14.5**

Base Unit Dimensions

Unit Length:..... **141.5** in
 Unit Width:..... **86.4** in
 Unit Height:..... **47.8** in

Operating Weight

Base Unit Weight:..... **1873** lb
 Medium Heat:..... **21** lb
 High Static Option - Horizontal Supply:..... **30** lb

Accessories

Power Exhaust:..... **125** lb
 CH 6-7 ULL Economizer w/POL224:..... **293** lb
 Barometric Hood:..... **25** lb

Total Operating Weight:..... **2367** lb

Unit

Unit Voltage-Phase-Hertz:..... **460-3-60**
 Air Discharge:..... **Horizontal**
 Fan Drive Type:..... **Vane Axial**
 Actual Airflow:..... **7000** CFM
 Site Altitude:..... **0** ft

Cooling Performance

Condenser Entering Air DB:..... **95.0** F
 Evaporator Entering Air DB:..... **80.0** F
 Evaporator Entering Air WB:..... **67.0** F
 Entering Air Enthalpy:..... **31.44** BTU/lb
 Evaporator Leaving Air DB:..... **56.7** F
 Evaporator Leaving Air WB:..... **55.1** F
 Evaporator Leaving Air Enthalpy:..... **23.20** BTU/lb
 Gross Cooling Capacity:..... **259.37** MBH
 Gross Sensible Capacity:..... **176.14** MBH
 Compressor Power Input:..... **20.88** kW
 Coil Bypass Factor:..... **0.127**

Heating Performance

Heating Airflow:..... **7000** CFM
 Entering Air Temp:..... **70.0** F
 Leaving Air Temp:..... **103.2** F
 Gas Heating Input Capacity:..... **248.0 / 310.0** MBH
 Gas Heating Output Capacity:..... **200.0 / 251.0** MBH
 Temperature Rise:..... **33.2** F
 Thermal Efficiency (%):..... **81.0**

Supply Fan

External Static Pressure:..... **0.50** in wg
 Options / Accessories Static Pressure
 Power Exhaust:..... **(Fan Data Includes Drop)**
 Application External Static (ESP + Unit Opts/Acc.):..... **0.50** in wg
 Fan RPM:..... **1703**
 Fan Power:..... **2.78** BHP
 NOTE:..... **Selected IFM RPM Range: 1393 - 2200**

Selection includes construction throwaway filter into the base fan curve. This filter is not MERV Rated.

Performance Summary For GE RTU 1 and 2

Project: Colton High Auditorium
 Prepared By:

09/12/2025
 03:25PM

Power Exhaust

Return Duct Static:..... **0.40** in wg
 Max. Air to Exhaust:..... **4590** CFM

Electrical Data

Voltage Range:..... **414 - 506**
 Compressor #1 RLA:..... **17.1**
 Compressor #1 LRA:..... **140**
 Compressor #2 RLA:..... **17.1**
 Compressor #2 LRA:..... **140**
 Indoor Fan Motor Type:..... **HIGH-HORZ**
 Indoor Fan Motor FLA (Total):..... **5.6**
 Combustion Fan Motor FLA (ea):..... **0.3**
 Power Supply MCA:..... **60**
 Power Supply MOCP (Fuse or HACR):..... **70**
 Disconnect Size FLA:..... **63**
 Disconnect Size LRA:..... **316**
 Electrical Convenience Outlet:..... **None**
 Power Exhaust [Motor Qty / FLA(ea motor)]:..... **2 / 3.1**
 Outdoor Fan [Qty / FLA (ea)]:..... **4 / 0.9**

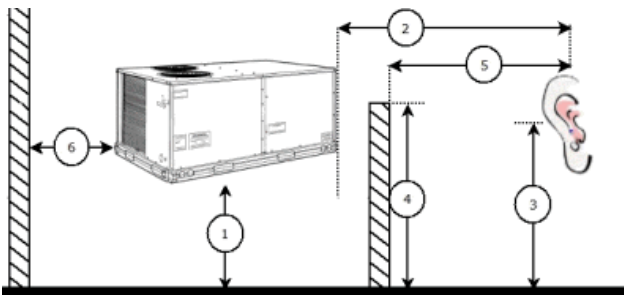
Control Panel SCCR: 5kA RMS at Rated Symmetrical Voltage

Acoustics

Sound Power Levels, db re 10E-12 Watts

	Discharge	Inlet	Outdoor
63 Hz	81.2	79.6	95.6
125 Hz	82.7	76.0	87.5
250 Hz	83.9	71.0	84.2
500 Hz	77.6	67.1	84.2
1000 Hz	77.2	68.0	81.7
2000 Hz	74.1	61.9	77.9
4000 Hz	69.1	52.8	73.2
8000 Hz	61.7	44.8	66.3
A-Weighted	82.1	71.5	86.5

Advanced Acoustics



Advanced Acoustics Parameters

1. Unit height above ground:..... **30.0** ft
 2. Horizontal distance from unit to receiver:..... **50.0** ft
 3. Receiver height above ground:..... **5.7** ft
 4. Height of obstruction:..... **0.0** ft
 5. Horizontal distance from obstruction to receiver:..... **0.0** ft
 6. Horizontal distance from unit to obstruction:..... **0.0** ft

Performance Summary For GE RTU 1 and 2

Project: Colton High Auditorium
 Prepared By:

09/12/2025
 03:25PM

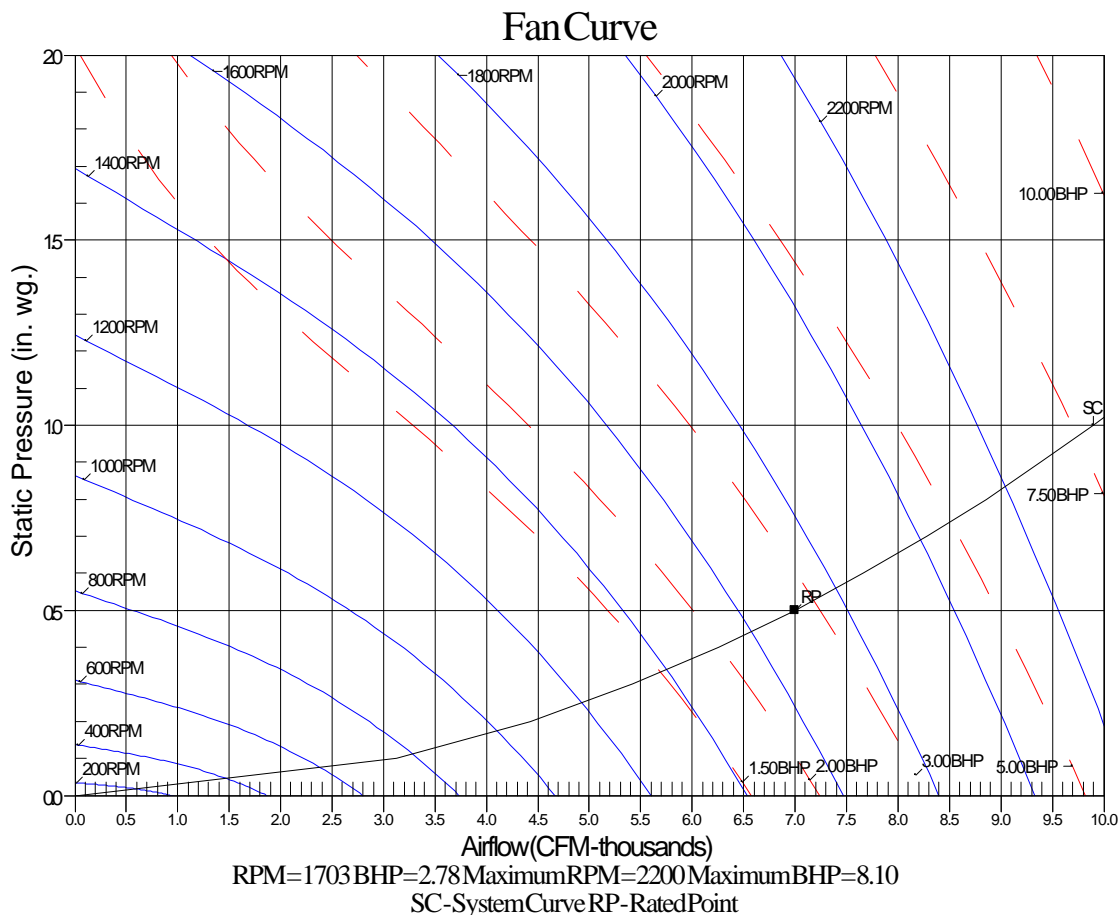
Detailed Acoustics Information

Octave Band Center Freq. Hz	63	125	250	500	1k	2k	4k	8k	Overall
A	95.6	87.5	84.2	84.2	81.7	77.9	73.2	66.3	96.9 Lw
B	69.4	71.4	75.6	81.0	81.7	79.1	74.2	65.2	86.5 LwA
C	63.2	55.1	51.8	51.8	49.3	45.5	40.8	33.9	64.5 Lp
D	37.0	39.0	43.2	48.6	49.3	46.7	41.8	32.8	54.1 LpA

Legend

- A Sound Power Levels at Unit's Acoustic Center, Lw
- B A-Weighted Sound Power Levels at Unit's Acoustic Center, LwA
- C Sound Pressure Levels at Specific Distance from Unit, Lp
- D A-Weighted Sound Pressure Levels at Specific Distance from Unit, LpA

Calculation methods used in this program are patterned after the ASHRAE Guide; other ASHRAE Publications and the AHRI Acoustical Standards. While a very significant effort has been made to insure the technical accuracy of this program, it is assumed that the user is knowledgeable in the art of system sound estimation and is aware of the tolerances involved in real world acoustical estimation. This program makes certain assumptions as to the dominant sound sources and sound paths which may not always be appropriate to the real system being estimated. Because of this, no assurances can be offered that this software will always generate an accurate sound prediction from user supplied input data. If in doubt about the estimation of expected sound levels in a space, an Acoustical Engineer or a person with sound prediction expertise should be consulted.



GE RTU 3, 4, 5, 6

Project: Colton High Auditorium
Prepared By:

09/12/2025
03:25PM

GE RTU 3, 4, 5, 6

**Tag Cover Sheet
Unit Report
Certified Drawing
Performance Report**

Unit Report For GE RTU 3, 4, 5, 6

Project: Colton High Auditorium
 Prepared By:

09/12/2025
 03:25PM

Unit Parameters

Unit Model:.....**48FEEM28A3A6-0A0A0**
 Unit Size:.....**28 (25 Tons)**
 Volts-Phase-Hertz:.....**460-3-60**
 Heating Type:.....**Gas**
 Refrigerant:.....**R-454B**
 Heat Control:.....**Medium Heat**
 Duct Cfg:.....**Vertical Supply / Vertical Return**
 DX Options:.....**Two Stage Cooling, Single Circuit**

Dimensions (ft. in.) & Weight (lb.) ***

Unit Length:.....**11' 9.5"**
 Unit Width:.....**7' 2.375"**
 Unit Height:.....**3' 11.75"**
Total Operating Weight:.....2497 lb

*** Weights and Dimensions are approximate. Weight does not include unit packaging. Approximate dimensions are provided primarily for shipping purposes. For exact dimensions and weights, refer to appropriate product data catalog.

Lines and Filters

Gas Line Size:.....**3/4**
 Condensate Drain Line Size:.....**3/4**
 Return Air Filter Type:.....**Throwaway**
 Return Air Filter Quantity:.....**9**
 Return Air Filter Size:.....**16 x 25 x 2**

Selection includes construction throwaway filter into the base fan curve.

Unit Configuration

Medium Heat
 High Static Option - Vertical Supply
 Al/Cu - Al/Cu
 Standard Electromechanical Controls
 Standard Packaging
 UL60335-2-40 approved R-454B Dissipation board and leak sensor included as standard

Warranty Information

1-Year parts(std.)
 5-Year compressor parts(std.)
 10-Year heat exchanger - Aluminized(std.)

No optional warranties were selected.

NOTE: Please see Warranty Catalog 500-089 for explanation of policies and ordering methods.

Ordering Information

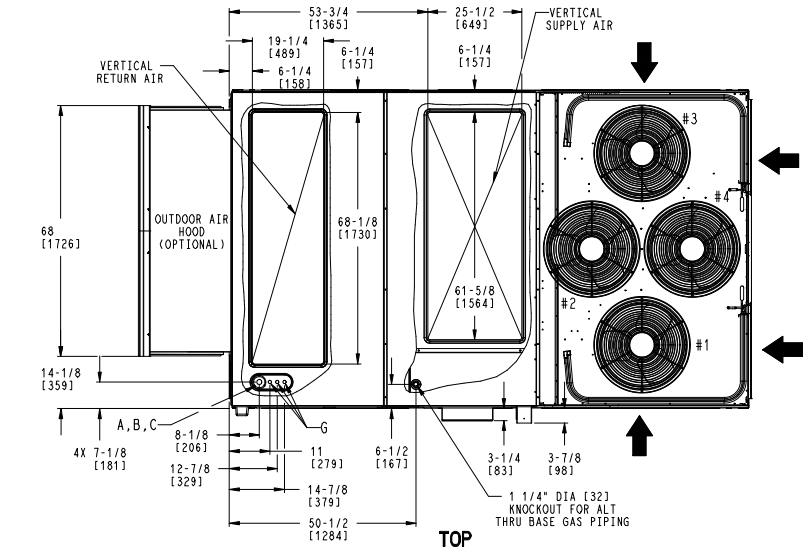
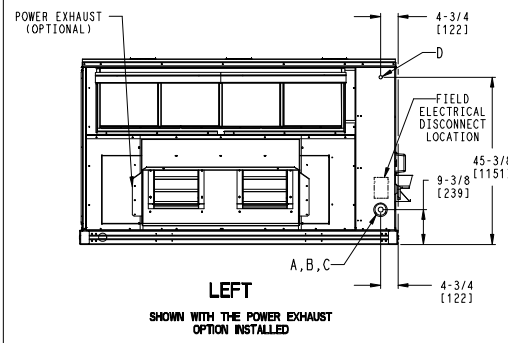
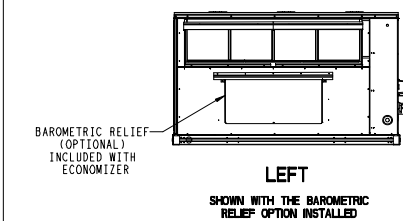
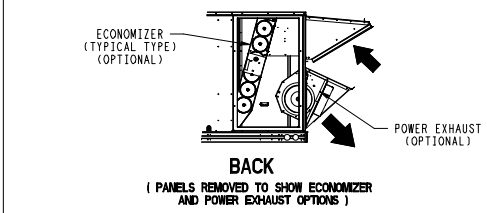
Part Number	Description	Quantity
48FEEM28A3A6-0A0A0	Rooftop Unit	1
Field Installed Accessories		
CRECOMZR114A00	CH 8-9 ULL Economizer w/POL224	1
CRPWREXH069A00	Power Exhaust	1

Certified Drawing for GE RTU 3, 4, 5, 6

Project: Colton High Auditorium
Prepared By:

09/12/2025
03:25PM

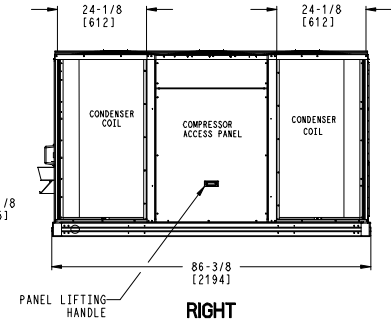
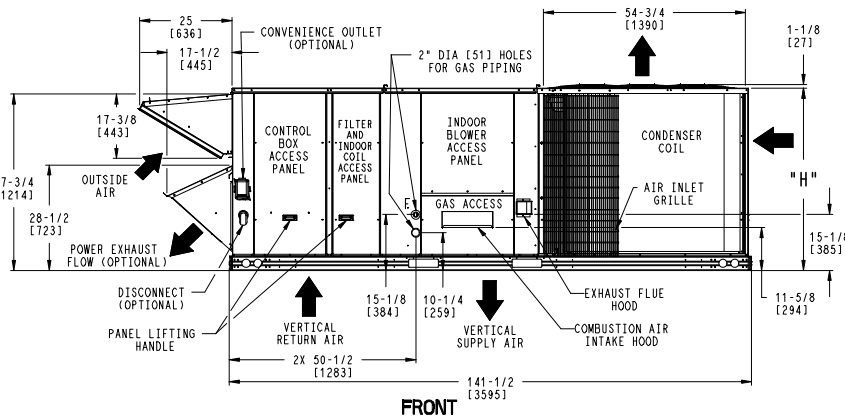
Carrier THIS DOCUMENT IS THE PROPERTY OF CARRIER CORPORATION AND IS DELIVERED UPON THE EXPRESS CONDITION THAT THE CONTENTS WILL NOT BE DISCLOSED OR USED WITHOUT CARRIER CORPORATION'S WRITTEN CONSENT. SUBMISSION OF THESE DRAWINGS OR DOCUMENTS DOES NOT CONSTITUTE PART PERFORMANCE OR ACCEPTANCE OF CONTRACT.



CONNECTION SIZES	
A	1 3/8" DIA [35] FIELD POWER SUPPLY KNOCKOUT
B	3" DIA [76] FIELD POWER SUPPLY KNOCKOUT
C	3 5/8" DIA [92] FIELD POWER SUPPLY KNOCKOUT
D	7/8" DIA [22] FIELD CONTROL WIRING HOLE
F	3/4"-14 NPT GAS CONNECTION (NOT SHOWN)
G	7/8" DIA [22] FIELD CONTROL WIRING KNOCKOUT

UNIT	H
24 SIZE	49-3/8 [1253]
28 SIZE	57-3/8 [1456]

- NOTES:
- DIMENSIONS ARE IN INCHES, DIMENSIONS IN [] ARE IN MILLIMETERS.
 - CENTER OF GRAVITY
 - DIRECTION OF AIR FLOW
 - ALL VIEW DRAWN USING 3RD ANGLE



**DEDICATED VERTICAL AIRFLOW UNIT
24,28 SIZE**

ITC CLASSIFICATION	SHEET	DATE	SUPERCEDES	48FE 24,28 SINGLE ZONE ELECTRICAL COOLING WITH GAS HEAT	50HE004885	REV
U.S. ECCN:NSR	1 OF 5	05/22/24	-			-

Certified Drawing for GE RTU 3, 4, 5, 6

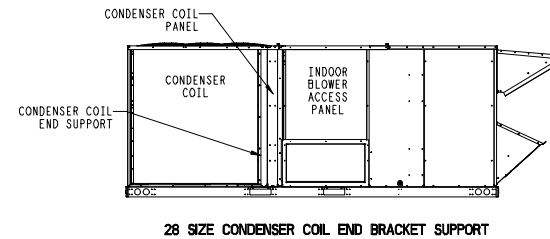
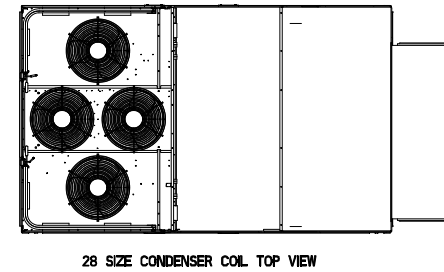
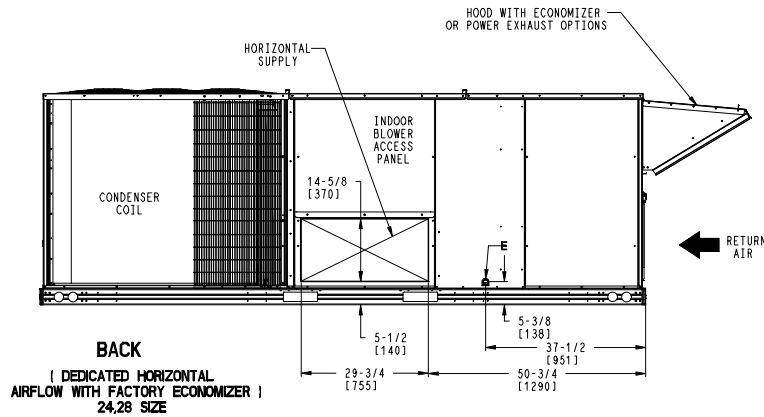
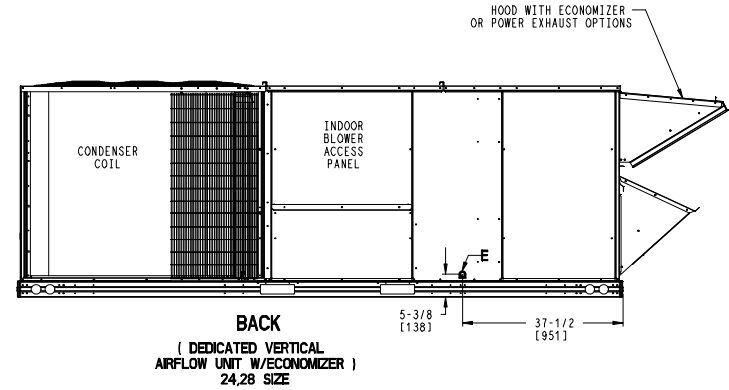
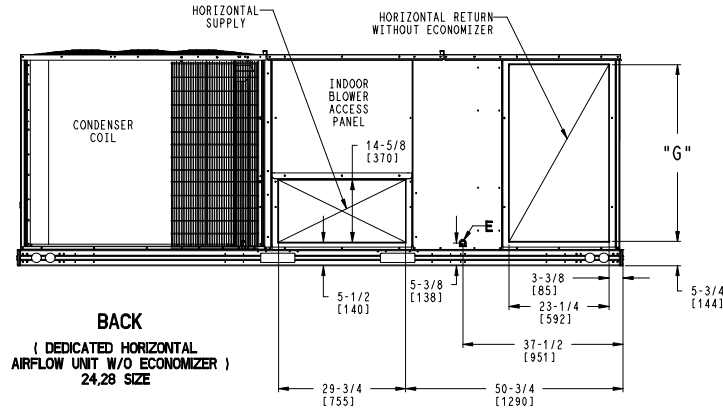
Project: Colton High Auditorium
Prepared By:

09/12/2025
03:25PM

CONNECTION SIZES	
E	3/4"-14 NPT CONDENSATE DRAIN

UNIT	G
24 SIZE	41-3/8 [1049]
28 SIZE	49-1/4 [1251]

Carrier THIS DOCUMENT IS THE PROPERTY OF CARRIER CORPORATION AND IS DELIVERED UPON THE EXPRESS CONDITION THAT THE CONTENTS WILL NOT BE DISCLOSED OR USED WITHOUT CARRIER CORPORATION'S WRITTEN CONSENT. SUBMISSION OF THESE DRAWINGS OR DOCUMENTS DOES NOT CONSTITUTE PART PERFORMANCE OR ACCEPTANCE OF CONTRACT.



ITC CLASSIFICATION	SHEET	DATE	SUPERCEDES	48FE 24,28 SINGLE ZONE ELECTRICAL COOLING WITH GAS HEAT	50HE004885	REV
U. S. ECCN: NSR	3 OF 5	05/22/24	-			-

Certified Drawing for GE RTU 3, 4, 5, 6

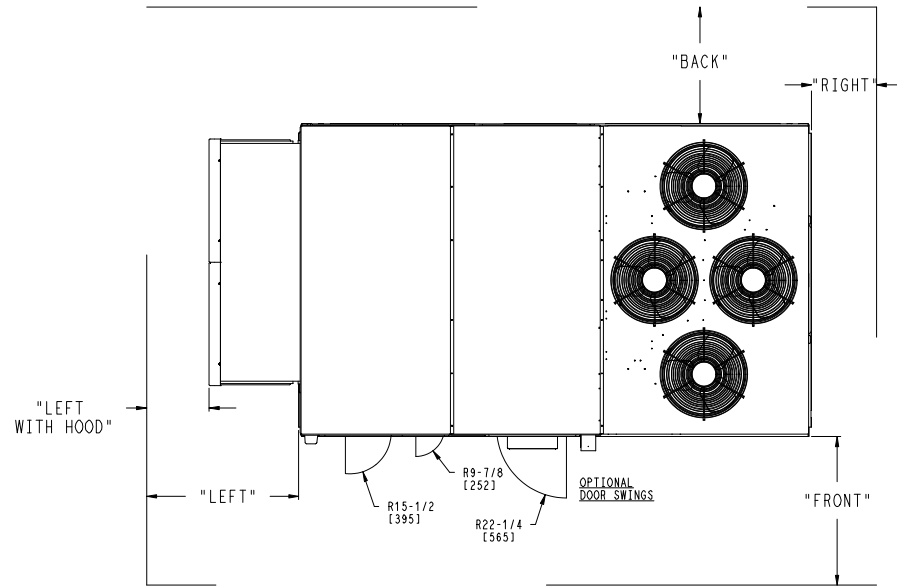
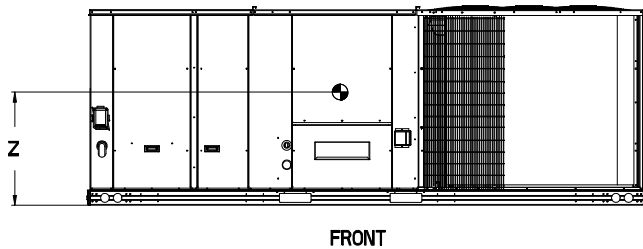
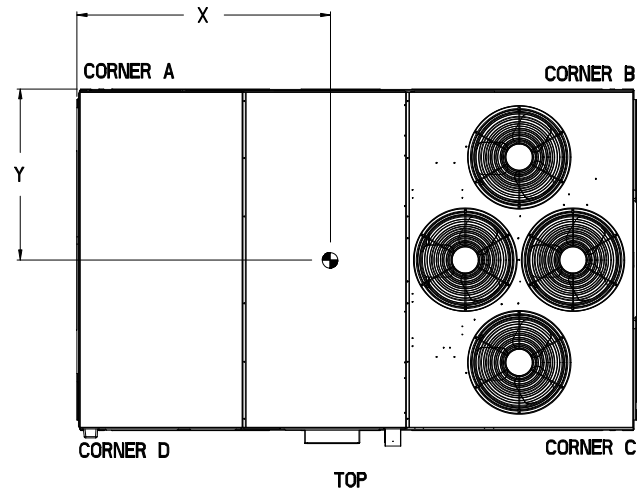
Project: Colton High Auditorium
Prepared By:

09/12/2025
03:25PM

UNIT	STD UNIT WEIGHT *		CORNER WEIGHT (A)		CORNER WEIGHT (B)		CORNER WEIGHT (C)		CORNER WEIGHT (D)		C.G.		
	LBS.	KG.	LBS.	KG.	LBS.	KG.	LBS.	KG.	LBS.	KG.	X	Y	Z
48FE 24	2000	907	429	195	505	229	576	261	489	222	76 1/2 [1943]	46 [1168]	16 1/2 [419]
48FE 28	2174	986	458	208	583	264	634	288	498	226	79 1/4 [2013]	45 [1143]	19 [483]

Carrier THIS DOCUMENT IS THE PROPERTY OF CARRIER CORPORATION AND IS DELIVERED UPON THE EXPRESS CONDITION THAT THE CONTENTS WILL NOT BE DISCLOSED OR USED WITHOUT CARRIER CORPORATION'S WRITTEN CONSENT. SUBMISSION OF THESE DRAWINGS OR DOCUMENTS DOES NOT CONSTITUTE PART PERFORMANCE OR ACCEPTANCE OF CONTRACT.

* STANDARD UNIT WEIGHT IS WITH LOW GAS HEAT AND WITHOUT PACKAGING. FOR OTHER OPTIONS AND ACCESSORIES, REFER TO THE PRODUCT DATA CATALOG.



NOTES:

- CLEARANCE ABOVE THE UNIT TO BE 72"
- FOR ALL MINIMUM CLEARANCES LOCAL CODES OR JURISDICTIONS MAY PREVAIL.

SURFACE	CLEARANCE		OPERATING CLEARANCE
	SERVICE WITH CONDUCTIVE BARRIER	SERVICE WITH NONCONDUCTIVE BARRIER	
FRONT	48 [1219mm]	36 [914mm]	18 [457mm]
LEFT	48 [1219mm]	42 [1067mm]	18 [457mm]
BACK	42 [1067mm]	36 [914mm]	18 [457mm]
LEFT WITH HOOD	36 [914mm]	36 [914mm]	18 [457mm]
RIGHT	36 [914mm]	36 [914mm]	18 [457mm]
TOP	72 [1829mm]	72 [1829mm]	72 [1829mm]

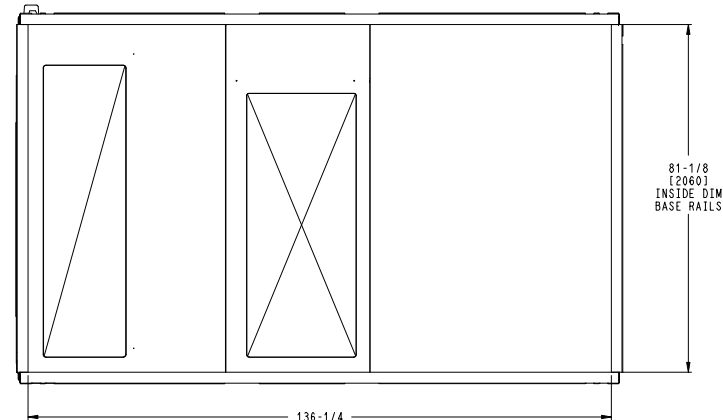
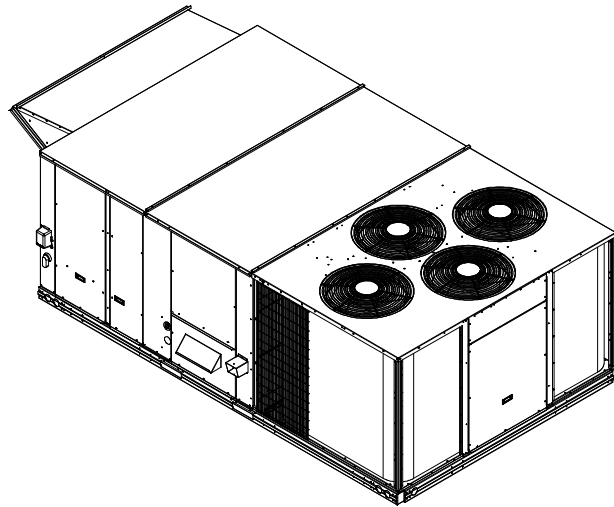
ITC CLASSIFICATION U.S. ECCN: NSR	SHEET 4 OF 5	DATE 05/22/24	SUPERCEDES -	48FE 24,28 SINGLE ZONE ELECTRICAL COOLING WITH GAS HEAT	50HE004885	REV -
--------------------------------------	-----------------	------------------	-----------------	---------------------------------------------------------	------------	----------

Certified Drawing for GE RTU 3, 4, 5, 6

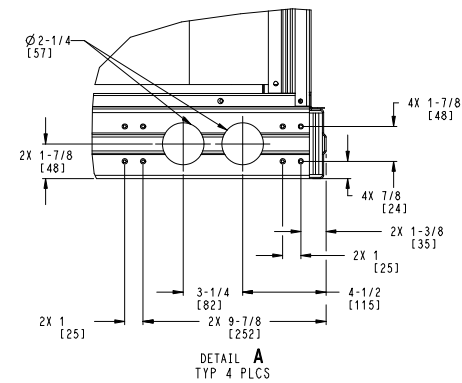
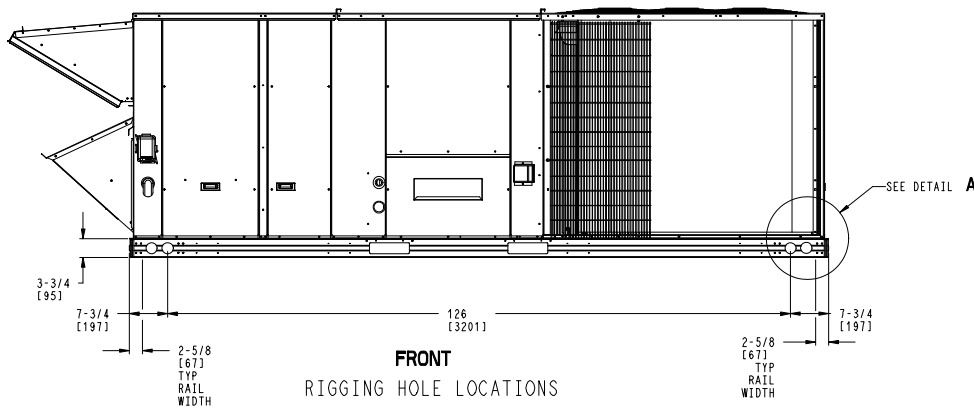
Project: Colton High Auditorium
Prepared By:

09/12/2025
03:25PM

	THIS DOCUMENT IS THE PROPERTY OF CARRIER CORPORATION AND IS DELIVERED UPON THE EXPRESS CONDITION THAT THE CONTENTS WILL NOT BE DISCLOSED OR USED WITHOUT CARRIER CORPORATION'S WRITTEN CONSENT.	SUBMISSION OF THESE DRAWINGS OR DOCUMENTS DOES NOT CONSTITUTE PART PERFORMANCE OR ACCEPTANCE OF CONTRACT.
-------------------------------------------------------------------------------------	-------------------------------------------------------------------------------------------------------------------------------------------------------------------------------------------------	-----------------------------------------------------------------------------------------------------------



BOTTOM
INSIDE BASERAIL DIMENSIONS



ITC CLASSIFICATION	SHEET	DATE	SUPERCEDES	48FE 24,28 SINGLE ZONE ELECTRICAL COOLING WITH GAS HEAT	50HE004885	REV
U. S. ECCN: NSR	5 OF 5	05/22/24	-			-

Performance Summary For GE RTU 3, 4, 5, 6

Project: Colton High Auditorium
Prepared By:

09/12/2025
03:25PM

Part Number:48FEEM28A3A6-0A0A0

Refrigerant:..... R-454B
ARI EER:..... 9.80
IEER:..... 14.0

Base Unit Dimensions

Unit Length:..... 141.5 in
Unit Width:..... 86.4 in
Unit Height:..... 47.8 in

Operating Weight

Base Unit Weight:..... 2047 lb
Medium Heat:..... 21 lb

Accessories

CH 8-9 ULL Economizer w/POL224:..... 304 lb
Power Exhaust:..... 125 lb

Total Operating Weight:..... 2497 lb

Unit

Unit Voltage-Phase-Hertz:..... 460-3-60
Air Discharge:..... Vertical
Fan Drive Type:..... Vane Axial
Actual Airflow:..... 10000 CFM
Site Altitude:..... 0 ft

Cooling Performance

Condenser Entering Air DB:..... 95.0 F
Evaporator Entering Air DB:..... 80.0 F
Evaporator Entering Air WB:..... 67.0 F
Entering Air Enthalpy:..... 31.44 BTU/lb
Evaporator Leaving Air DB:..... 58.8 F
Evaporator Leaving Air WB:..... 57.6 F
Evaporator Leaving Air Enthalpy:..... 24.77 BTU/lb
Gross Cooling Capacity:..... 300.08 MBH
Gross Sensible Capacity:..... 228.51 MBH
Compressor Power Input:..... 24.85 kW
Coil Bypass Factor:..... 0.078

Heating Performance

Heating Airflow:..... 10000 CFM
Entering Air Temp:..... 70.0 F
Leaving Air Temp:..... 93.2 F
Gas Heating Input Capacity:..... 248.0 / 310.0 MBH
Gas Heating Output Capacity:..... 200.0 / 251.0 MBH
Temperature Rise:..... 23.2 F
Thermal Efficiency (%):..... 81.0

Supply Fan

External Static Pressure:..... 0.50 in wg
Options / Accessories Static Pressure
Power Exhaust:..... (Fan Data Includes Drop)
Application External Static (ESP + Unit Opts/Acc.):..... 0.50 in wg
Fan RPM:..... 1598
Fan Power:..... 3.80 BHP
NOTE:..... Selected IFM RPM Range: 1181 - 2200

Selection includes construction throwaway filter into the base fan curve. This filter is not MERV Rated.

Power Exhaust

Performance Summary For GE RTU 3, 4, 5, 6

Project: Colton High Auditorium
Prepared By:

09/12/2025
03:25PM

Return Duct Static:..... **0.40** in wg
Max. Air to Exhaust:..... **4590** CFM

Electrical Data

Voltage Range:..... **414 - 506**
Compressor #1 RLA:..... **21.6**
Compressor #1 LRA:..... **147**
Compressor #2 RLA:..... **21.6**
Compressor #2 LRA:..... **147**
Indoor Fan Motor Type:..... **HIGH**
Indoor Fan Motor FLA (Total):..... **5.6**
Combustion Fan Motor FLA (ea):..... **0.3**
Power Supply MCA:..... **70**
Power Supply MOCP (Fuse or HACR):..... **90**
Disconnect Size FLA:..... **74**
Disconnect Size LRA:..... **330**
Electrical Convenience Outlet:..... **None**
Power Exhaust [Motor Qty / FLA(ea motor)]:..... **2 / 3.1**
Outdoor Fan [Qty / FLA (ea)]:..... **4 / 0.9**

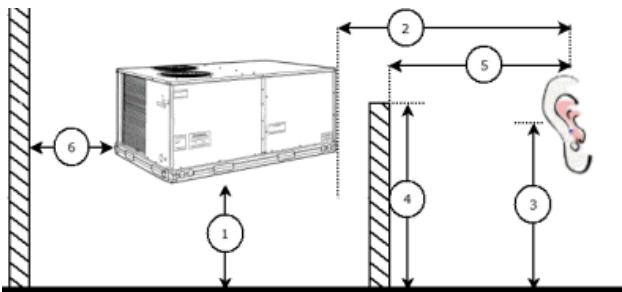
Control Panel SCCR: 5kA RMS at Rated Symmetrical Voltage

Acoustics

Sound Power Levels, db re 10E-12 Watts

	Discharge	Inlet	Outdoor
63 Hz	91.5	77.5	97.1
125 Hz	90.6	74.2	88.3
250 Hz	89.1	70.5	84.4
500 Hz	85.4	68.2	83.3
1000 Hz	80.9	68.5	80.7
2000 Hz	77.5	60.8	77.4
4000 Hz	72.8	52.5	73.4
8000 Hz	63.0	42.9	67.3
A-Weighted	87.3	71.6	85.9

Advanced Acoustics



Advanced Acoustics Parameters

1. Unit height above ground:..... **30.0** ft
2. Horizontal distance from unit to receiver:..... **50.0** ft
3. Receiver height above ground:..... **5.7** ft
4. Height of obstruction:..... **0.0** ft
5. Horizontal distance from obstruction to receiver:..... **0.0** ft
6. Horizontal distance from unit to obstruction:..... **0.0** ft

Performance Summary For GE RTU 3, 4, 5, 6

Project: Colton High Auditorium
 Prepared By:

09/12/2025
 03:25PM

Detailed Acoustics Information

Octave Band Center Freq. Hz	63	125	250	500	1k	2k	4k	8k	Overall
A	97.1	88.3	84.4	83.3	80.7	77.4	73.4	67.3	98.1 Lw
B	70.9	72.2	75.8	80.1	80.7	78.6	74.4	66.2	85.9 LwA
C	64.7	55.9	52.0	50.9	48.3	45.0	41.0	34.9	65.7 Lp
D	38.5	39.8	43.4	47.7	48.3	46.2	42.0	33.8	53.5 LpA

Legend

- A Sound Power Levels at Unit's Acoustic Center, Lw
- B A-Weighted Sound Power Levels at Unit's Acoustic Center, LwA
- C Sound Pressure Levels at Specific Distance from Unit, Lp
- D A-Weighted Sound Pressure Levels at Specific Distance from Unit, LpA

Calculation methods used in this program are patterned after the ASHRAE Guide; other ASHRAE Publications and the AHRI Acoustical Standards. While a very significant effort has been made to insure the technical accuracy of this program, it is assumed that the user is knowledgeable in the art of system sound estimation and is aware of the tolerances involved in real world acoustical estimation. This program makes certain assumptions as to the dominant sound sources and sound paths which may not always be appropriate to the real system being estimated. Because of this, no assurances can be offered that this software will always generate an accurate sound prediction from user supplied input data. If in doubt about the estimation of expected sound levels in a space, an Acoustical Engineer or a person with sound prediction expertise should be consulted.

