



# NORTH TONAWANDA CITY SCHOOLS CAPITAL IMPROVEMENT PROJECT, 2026 \$59.9M

## SAFETY & SECURITY



Supports current district systems and emergency protocols.

### Facility Hardening

- Classroom door replacements
- Swipe access installation

### Prevention & Communication

- Security camera upgrades
- Additional PA speakers
- Emergency generator replacements

## BUILDING INFRASTRUCTURE



Meets NYS mandates and future transportation requirements.

### Climate & Comfort

- Cafeteria A/C installations
- HVAC replacements

### Facilities & Site

- Roof replacements
- Sidewalk & parking improvements
- Bus loop & parking expansion

## INSTRUCTIONAL EXPERIENCES



Expenses focus on spaces all students use.

### Grades K-3

- Art, music, gym renovations
- Inclusive playground

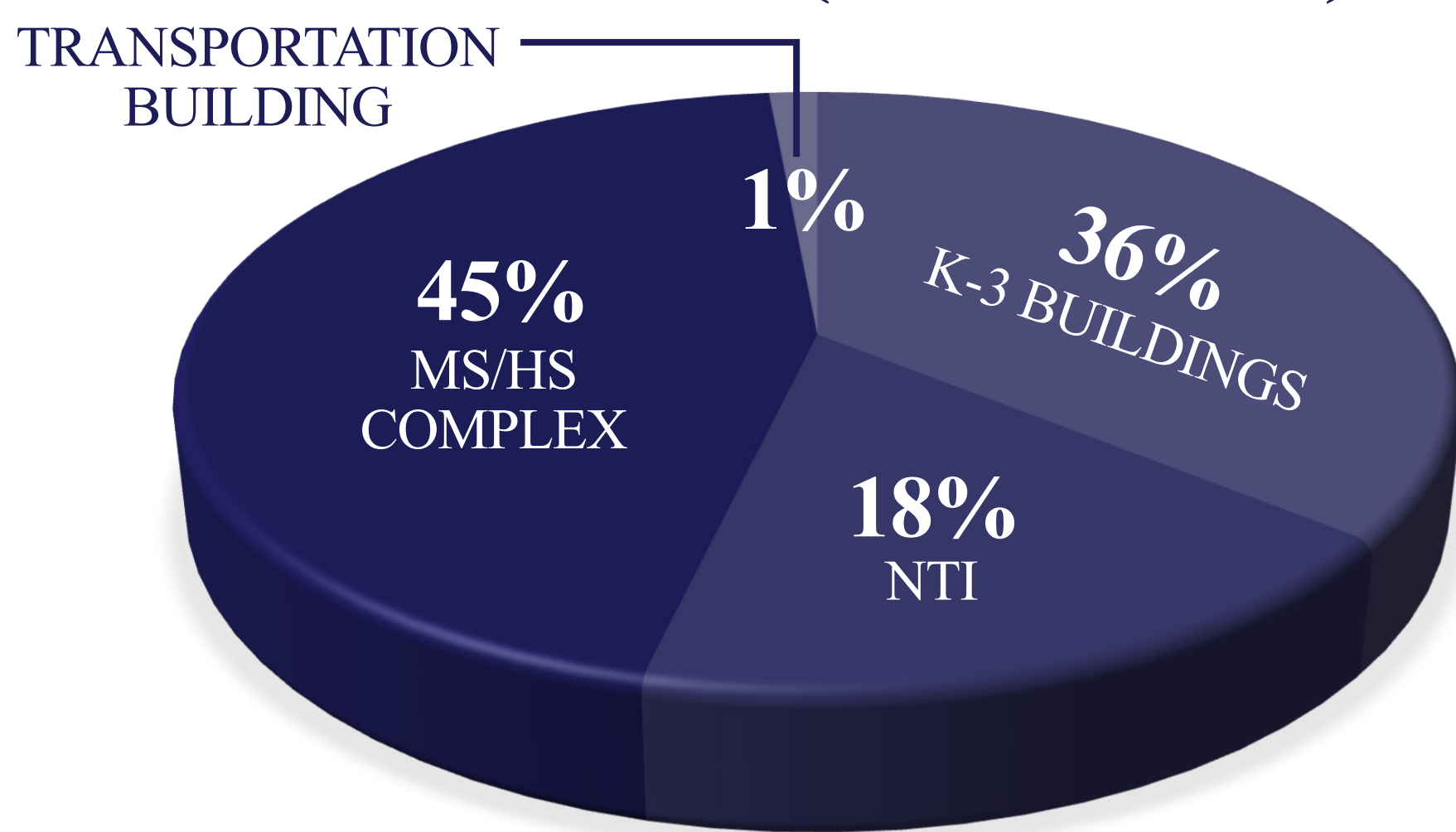
### Grades 4-6, 7-12

- Classroom upgrades
- Bathroom renovations
- Pool renovation
- Multi-purpose sports field

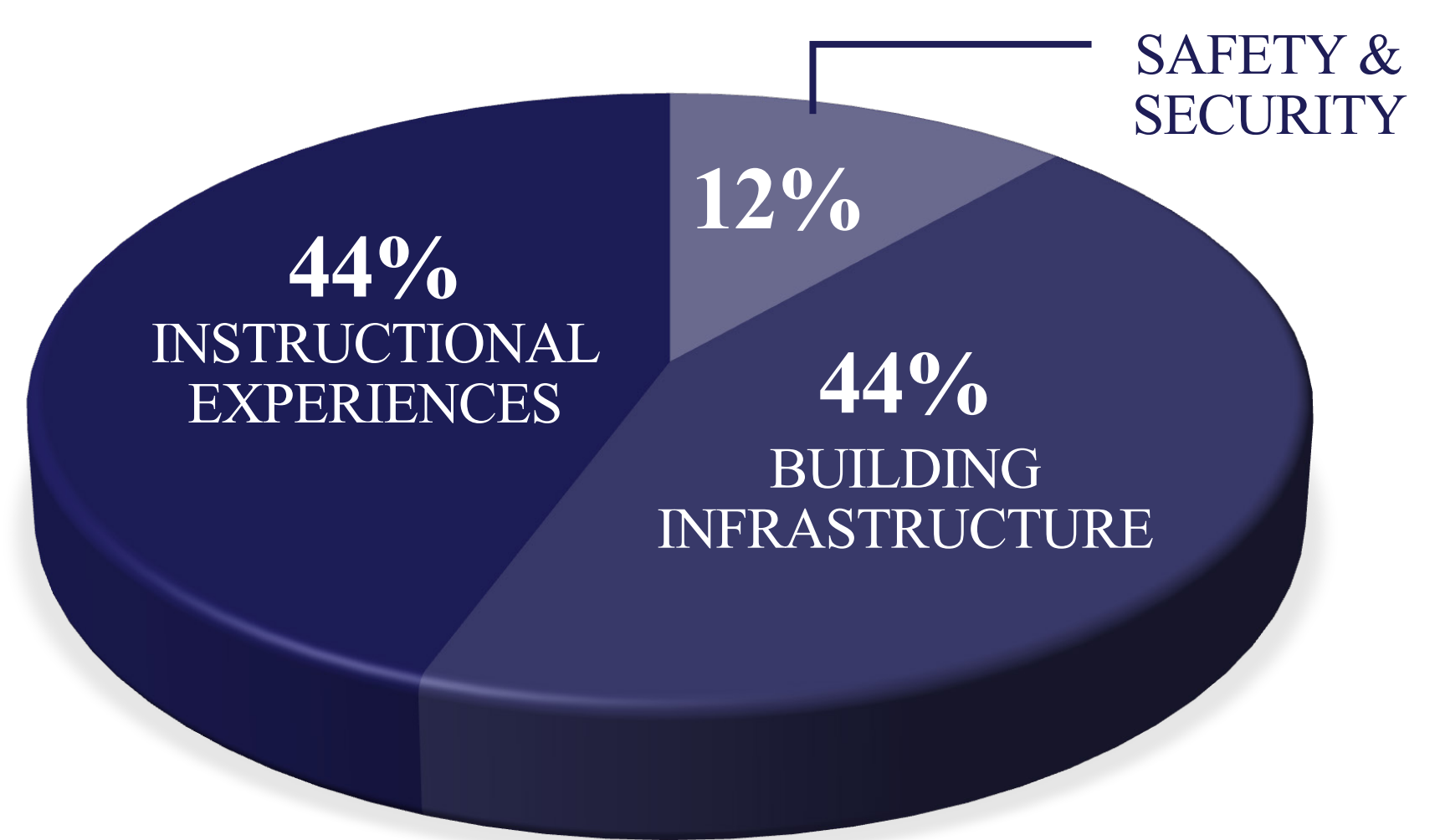
# NO LOCAL TAX IMPACT

## PROJECT BREAKDOWN

### BY GRADE (BUILDINGS)



### BY CATEGORY



## FINANCIAL INFORMATION

### STATE AID & CAPITAL RESERVES



Savings account for Capital Improvement Projects to lower local tax impact.

### PROJECT SIZE

**\$59.9 MILLION**

### TAX IMPACT

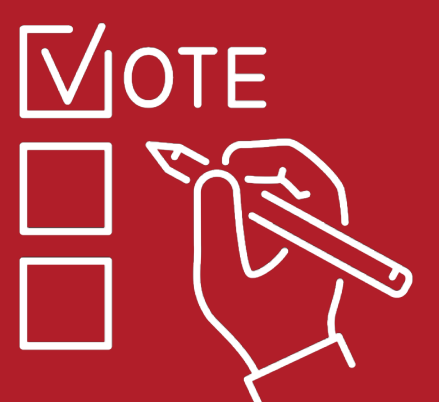
**NO LOCAL TAX IMPACT**

TUESDAY

**MAY 19**

### PUBLIC VOTE

11AM – 8PM  
HIGH SCHOOL FINE ARTS CENTER



### PUBLIC PRESENTATION

TUESDAY

**MAY 12**

7 PM | HIGH SCHOOL FINE ARTS CENTER



SCAN FOR MORE INFORMATION



# NORTH TONAWANDA CITY SCHOOLS CAPITAL IMPROVEMENT PROJECT 2026 \$59.9M



## SAFETY & SECURITY

Supports current district systems and emergency protocols.



## BUILDING INFRASTRUCTURE

Meets NYS mandates and future transportation requirements.



## INSTRUCTIONAL EXPERIENCES

Expenses focus on spaces all students use.

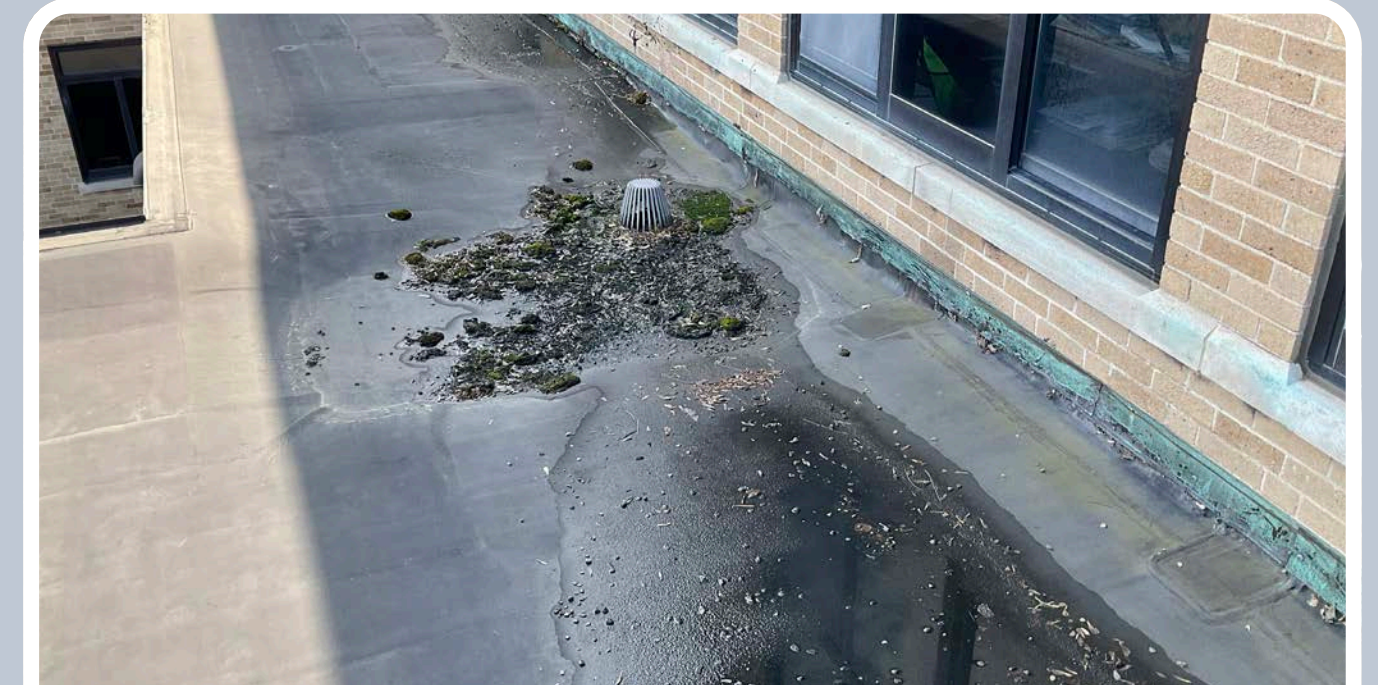
### DRAKE, OHIO & SPRUCE ELEMENTARY SCHOOLS (K-3 BUILDINGS)



EXISTING GYM WALL PADS/ BACKBOARDS



EXISTING ART ROOMS



EXISTING ROOF

#### DRAKE ELEMENTARY

Includes renovations to music room, art room, gym wall pads and backboards, classroom door replacement, swipe access installation (building-wide), security camera upgrades, cafeteria A/C installations, kitchen renovation, and sidewalk improvements.

#### OHIO ELEMENTARY

Includes renovations to music room, art room, gym wall pads and backboards, classroom door replacement, swipe access installation (building-wide), security camera upgrades, cafeteria A/C installations, kitchen renovation, bus loop for special education program, inclusive playground, parking lot & sidewalk improvements, and roof replacement.

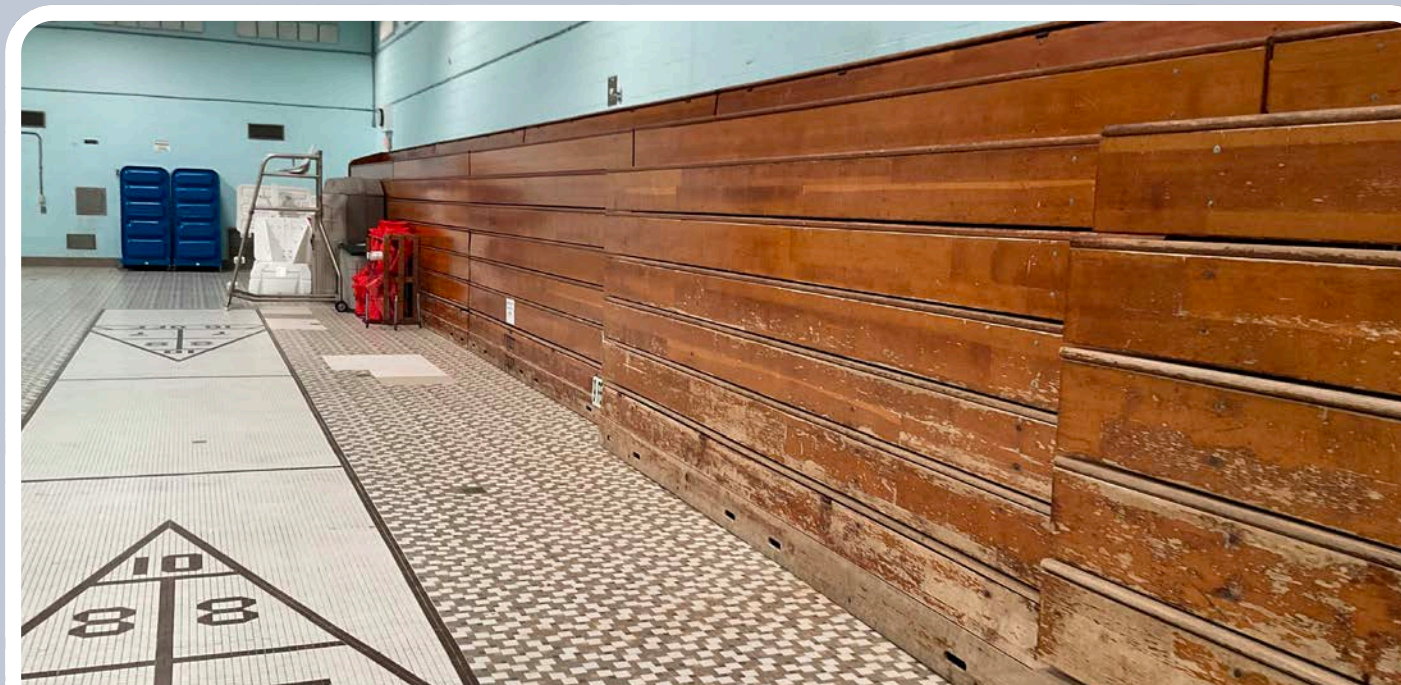
#### SPRUCE ELEMENTARY

Includes renovations to music room, art room, gym wall pads and backboards, classroom door replacement, swipe access installation (building-wide), security camera upgrades, cafeteria A/C installations, kitchen renovation, and roof replacement.

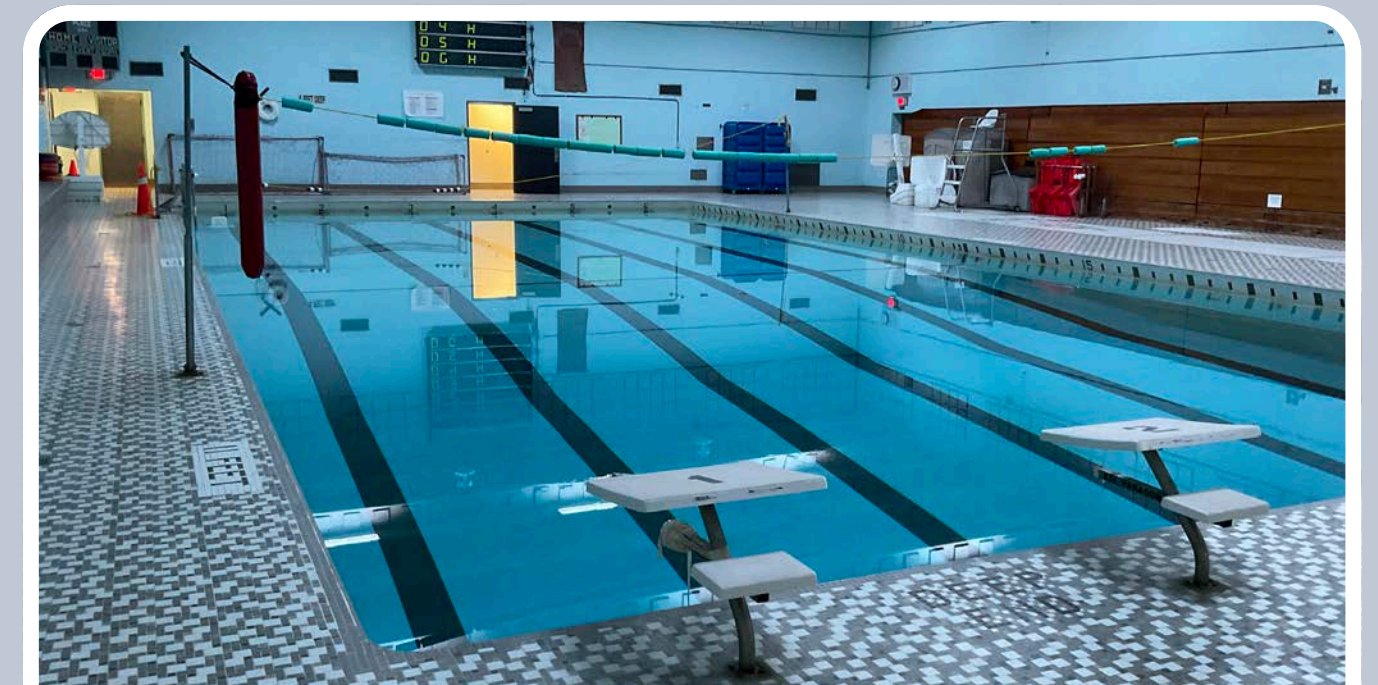
### INTERMEDIATE SCHOOL (NTI)



EXISTING PARKING LOT



EXISTING POOL



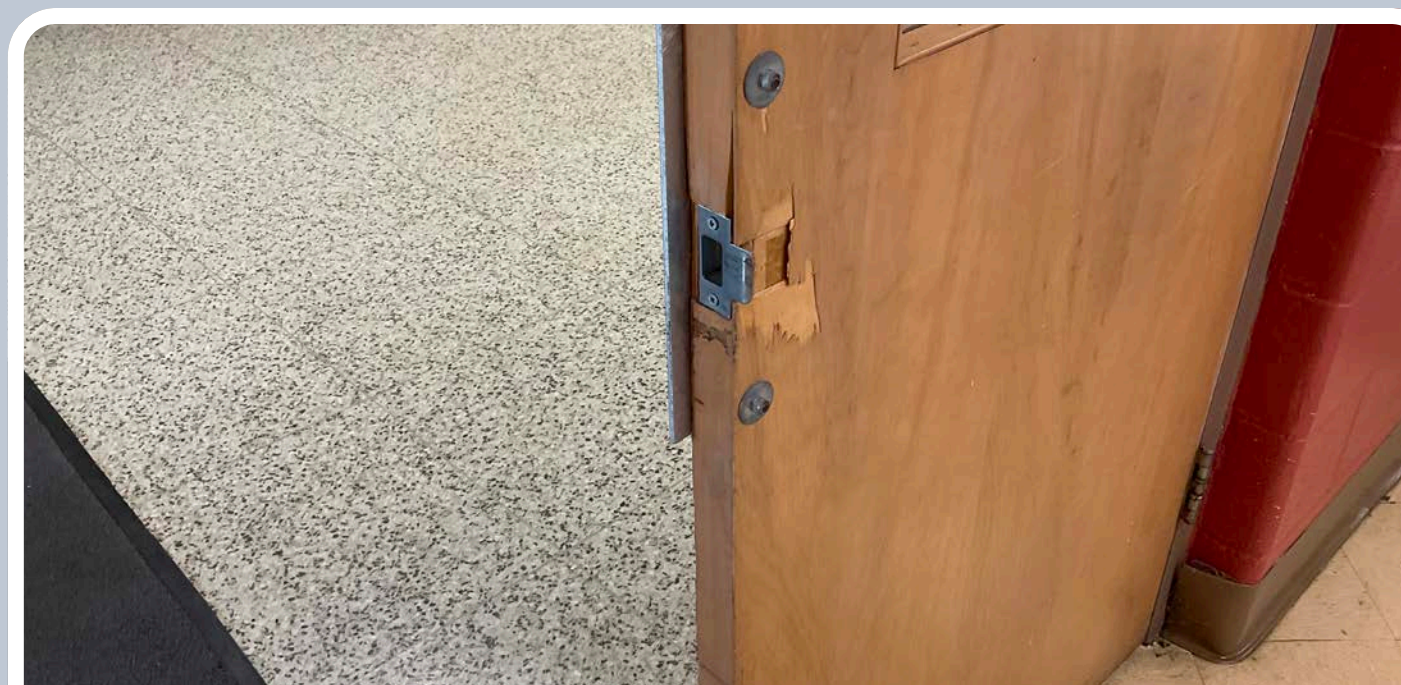
EXISTING POOL

Includes renovations to pool, air conditioning replacement at former North Tonawanda Learning Center, secure vestibule at BOCES wing, gym renovations, main office speakers, classroom door replacement, swipe access installation (building-wide), cafeteria A/C installations, and parking lot replacement.

### MIDDLE SCHOOL/HIGH SCHOOL COMPLEX (MS/HS)



PROPOSED MULTI-PURPOSE SPORTS FIELD



EXISTING CLASSROOM DOOR



EXISTING PARKING LOT

Includes generator replacement, classroom door replacement, swipe access installation (building-wide), security camera upgrades, cafeteria A/C installations, parking lot repavement and improvements, third floor bathroom renovations, third floor high school math classroom renovations, bus parking expansion, and multi-purpose sports field.

# NO LOCAL TAX IMPACT