

Lawrence Public Schools Enhancements 2026, Part II Teaching and Learning



Report to Board of Education

Monday, March 23rd



2026-2027 Enhancements



- Intentional design of coherent systems to support quality, consistent learning experiences for all students



2026 Teaching & Learning

Enhancements

- Support teachers in the implementation of **High-Quality Instructional Materials (HQIM)**
- Launch a **balanced assessment framework** embedded within the scope and sequence of the curriculum
- Ensure **real-world learning opportunities** across all student programming
- Develop an **Individual Plan of Study (IPS) scope and sequence** for Lawrence Public Schools
- Establish Lawrence Public Schools **differentiated diplomas**
- Align and enhance **CTE pathways** across the district
- **Re-envision College and Career Center**



High-quality Instructional Materials

2026-27 Enhancements - Consistent Learning Experiences



Key Characteristics of HQIMs

- **Standards-Aligned and Coherent:** Materials are tightly aligned to state academic standards and organized in a clear sequence that builds knowledge and skills over time and over multiple grade-levels.
- **Evidence-Based and Rigorous:** Lessons incorporate proven instructional practices, promote deep thinking, and balance conceptual understanding, skill development, and application.
- **Support for Teachers and Students:** Materials include clear lesson structures, assessments, differentiation supports, and guidance that help teachers deliver consistent, high-quality instruction.



High-quality Instructional Materials

2026-27 Enhancements - Consistent Learning Experiences



Quality Instructional Materials Impact Student and Teacher Experience

The average student spent...

About 530 hours of the approximately 720 hours in their core classes on assignments that are not grade level appropriate.

The average teacher spent...

7 hours per week developing or selecting instructional materials and reported creating 57% of their assignments.

****TNTP. (2018). The Opportunity Myth: What Students Can Show Us About How School Is Letting Them Down—and How to Fix It.*



High-quality Instructional Materials

2026-27 Enhancements - Consistent Learning Experiences



Focus on the Implementation of HQIMs

Making HQIMs central to school improvement efforts allows teachers to **focus on instruction** versus **curriculum design**.

“If materials are an afterthought in our efforts to improve student outcomes, and we do not give sufficient professional development to properly implement those materials, we’ve made a hard job nearly impossible...”

***[The 74 \(2024\). 40 Years After 'A Nation At Risk,' Could Curriculum Reform Finally Move the Needle on Academic Improvement?](#)



Balanced Assessment Framework

Coherent Systems



What is a Balanced Assessment Framework?

- A balanced assessment framework is a **coordinated system** that intentionally uses different assessment types over time **to collect evidence of student learning aligned to clear standards and goals.**

Are students learning on grade-level?

- Gives periodic, comparable data across classrooms/grades
- Is aligned to HQIMs and standards
- Feeds MTSS decisions and curriculum evaluation

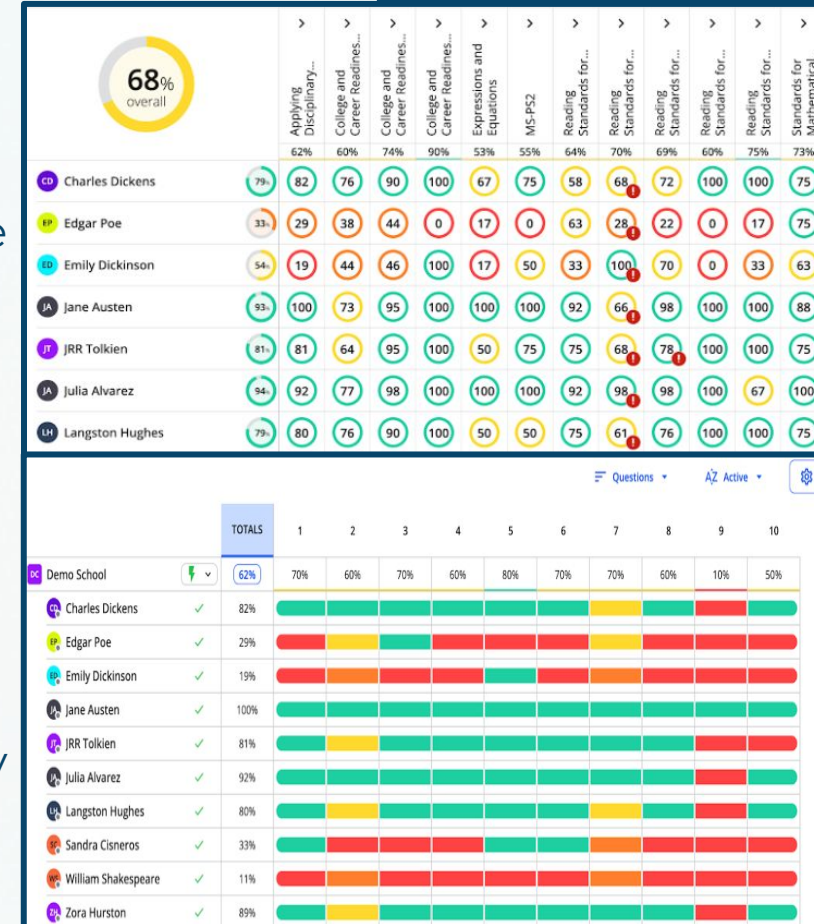
Balance Assessment Framework

Coherent Systems



Why Curriculum-embedded Assessments?

- Stronger alignment to instruction**
 Assessments directly measure the standards students are learning in the curriculum.
- Learning and assessment occur together**
 Assessment is embedded within instruction rather than interrupting it with additional testing days.
- Immediate instructional feedback**
 Teachers can quickly identify misconceptions and adjust instruction in real time.
- More authentic evidence of learning**
 Because assessments are part of the curriculum, teachers are more likely to trust and use the results.
- Systematic monitoring of standards**
 Creates a consistent process to ensure standards are taught and assessed across classrooms.
- Reduced testing fatigue**
 Students spend more time learning and less time taking separate tests.



Post-secondary Visioning

Coherent Systems



Real-world Learning

Real-world learning connects academic content to authentic problems, careers, and community contexts. In schools, it typically involves students applying knowledge in meaningful settings rather than only completing traditional assignments.

- Internships and Workplace Experiences
- Client-Connected Projects - Problem-solving Projects Completed with Business Partners
- Community Problem-Solving Projects
- Entrepreneurship and Student-Run Businesses



Individual Plan of Study

Coherent Systems



- A student-driven, evolving roadmap that aligns student interest and coursework with post-secondary goals.
- Preschool-7 staff prepares students for postsecondary success daily through teaching and practice of employability skills, reading, and math.
- 8-12 focuses on individual discovery, career discovery, goal setting and academic planning, and competency and skill development.

Individual Plan of Study

Coherent Systems



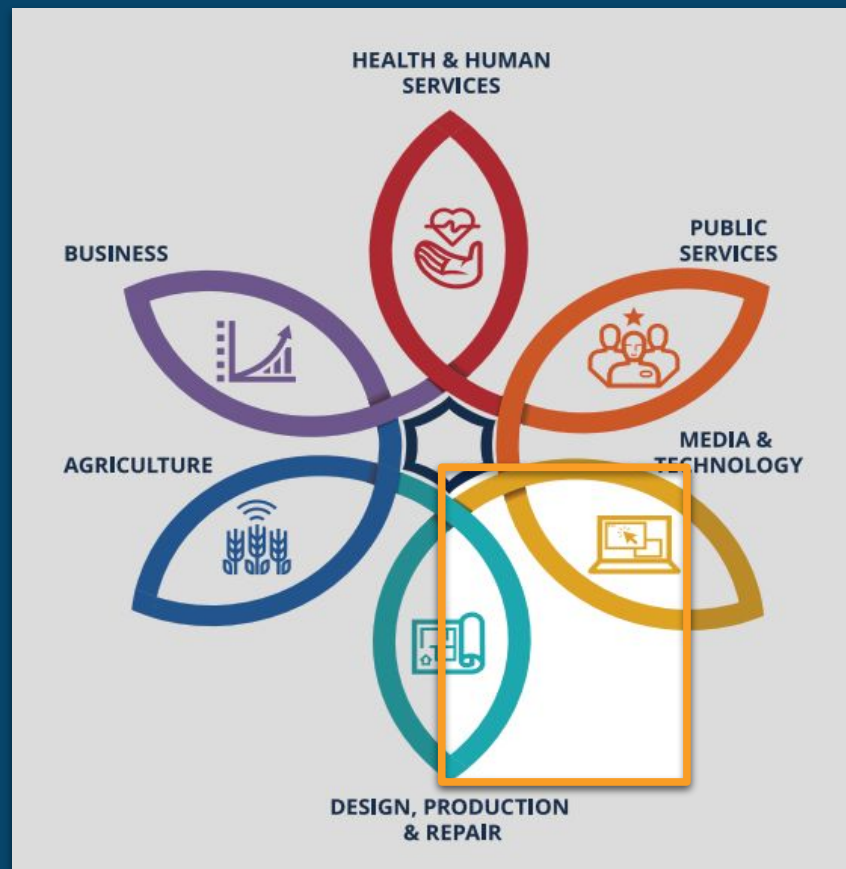
Individual Plan of Study Scope and Sequence

PRESCHOOL-GRADE 12

Grade 9 6 credits	Grade 10 6.5 credits	Grade 11 0 credits	Grade 12 0 credits
<ul style="list-style-type: none"> Algebra 1 (AMPED) S1 206921 Mathematics 9 B+ 0.5 cr. Algebra 1 (AMPED) S2 206922 Mathematics 9 D- 0.5 cr. English 9 S1 100191 English Language Arts 9 A 0.5 cr. English 9 S2 English 9 S2 English Language Arts 9 CR 0.5 cr. Biology S2 305192 Science 9 C 0.5 cr. Science - Individual Goals - S1 399911 Science 9 A 0.5 cr. Health 9 S1 805111 Health 9 C- 0.5 cr. Biology S1 305191 Science 10 A+ 0.5 cr. Intro to Law, Public Service and Safety... LP1012 Electives 9 A- 0.5 cr. Hnrs English 9 S1 EN104A Electives 9 C 0.5 cr. AVID S2 W00312 Electives 9 B- 0.5 cr. Credit Recovery WCr301 Electives 9 A- 	<ul style="list-style-type: none"> Integrated Algebra/Geometry 2 S1 206311 Mathematics 10 B- 0.5 cr. Integrated Algebra/Geometry 2 S2 206312 Mathematics 10 B 0.5 cr. English 10 S1 100291 English Language Arts 10 CR 0.5 cr. English 10 S2 100292 English Language Arts 10 A+ 0.5 cr. Chemistry S1 310191 Science 10 C+ 0.5 cr. Modern World History S1 405311 World History 10 B+ 0.5 cr. Modern World History S2 405312 World History 10 D- 0.5 cr. Chemistry S2 310192 Science 11 B 0.5 cr. Honors U.S. History S1 HS304A Electives 10 C 0.5 cr. Student Success Seminar 2 805722 Electives 10 C 0.5 cr. Construction 2 S2 AC2522 Electives 10 B- 0.5 cr. AP English Language and Compositio... EN500A Electives 10 A- 0.5 cr. 	<p>Available period</p> <p>Available period</p> <p>Closed for submission</p>	<ul style="list-style-type: none"> + Add Mathematics 12 + Add English Language Arts 12 0.5 cr. + Add Science 12 + Add U.S. Government 12 0.5 cr. + Add Elective 12 3.5 credits remaining Available period Available period Year-independent requirements ⓘ + Add Social Studies - Elective 0.5 cr. + Add Communications 0.5 cr. + Add STEM 1 cr. + Add Physical Ed. 0.5 cr.

Career and Technical Pathways

Consistent Learning Experiences



KS CTE 2025-2026

KS CTE 2026-2027

Career and Technical Education Pathways

Coherent Systems

Paused CTE Pathways

Biotechnology	<p>Reasons for Pausing:</p> <ul style="list-style-type: none">● Consolidated into Health Science Pathway or Diversified Agriculture Science● Student Choice/ Low-Enrollment● Teacher Licensure Issues● Application Courses Not Taught
Information Support & Services	
Networking & Telecommunications	
Plant Science & Industry Operations	
Natural Resources & Environmental Sustainability	
Animal Science, Health & Related Industries	



Career and Technical Education Pathways

Consistent Learning Experiences

Current Viable CTE Pathways



Lawrence Public Schools CTE Pathways	
Early Childhood Development & Services	Engineering & Applied Mathematics
Teaching/Training	Vehicle Maintenance & Repair
Diversified Agricultural Science	Construction & Design (Construction Strand)
Restaurant & Event Management	Media Design & Communications
Business Finance	Health Science
Marketing	Manufacturing
Programming and Software Development	

Career and Technical Education Pathways

Consistent Learning Experiences

New CTE Courses

New CTE Courses	Rationale
Introduction to Education	<p>These courses:</p> <ul style="list-style-type: none">● Improve sequencing● Align with existing curriculum and/or● Complete a pathway
Agriscience	
Capstone in Agriculture	
Health Care Work Experience I	
Health Care Essentials I	



Career and Technical Education Pathways

Coherent Systems

New Middle School CTE Courses



Introduction CTE Courses	Rationale
Business Essentials	Supports 26/27 CTE Pathways: <ul style="list-style-type: none">● Business Finance● Marketing● Restaurant & Event Management● Media Design & Communications
Introduction to Skilled Trades	Supports 26/27 CTE Pathways: <ul style="list-style-type: none">● Construction and Design● Manufacturing● Vehicle Maintenance and Repair

16



CTE: Districtwide Alignment + College & Career Center Enhancement

2026-27 Program Enhancements



- Refine & align Career & Technical Education (CTE) pathways.

Students will:

- gain greater access to real-world learning experiences
- earn industry credentials & post-secondary assets
- connect to college credit & in-demand careers



Differentiated Diplomas

Coherent Systems and Consistent Learning Experiences



- **Differentiated Diplomas are structured routes a student can follow to earn a high school diploma, intentionally aligned to specific postsecondary goals.**
- **Each diploma will contain its own courses, credits, and post-secondary asset expectations, so students can pursue rigorous learning that matches their interests, strengths, and plans after graduation.**



2026 Teaching & Learning

Enhancements

- Support teachers in the implementation of **High-Quality Instructional Materials (HQIM)**
- Launch a **balanced assessment framework** embedded within the scope and sequence of the curriculum
- Ensure **real-world learning opportunities** across all student programming
- Develop an **Individual Plan of Study (IPS) scope and sequence** for Lawrence Public Schools
- Establish Lawrence Public Schools **differentiated diplomas**
- Align and enhance **CTE pathways** across the district
- **Re-envision College and Career Center**

