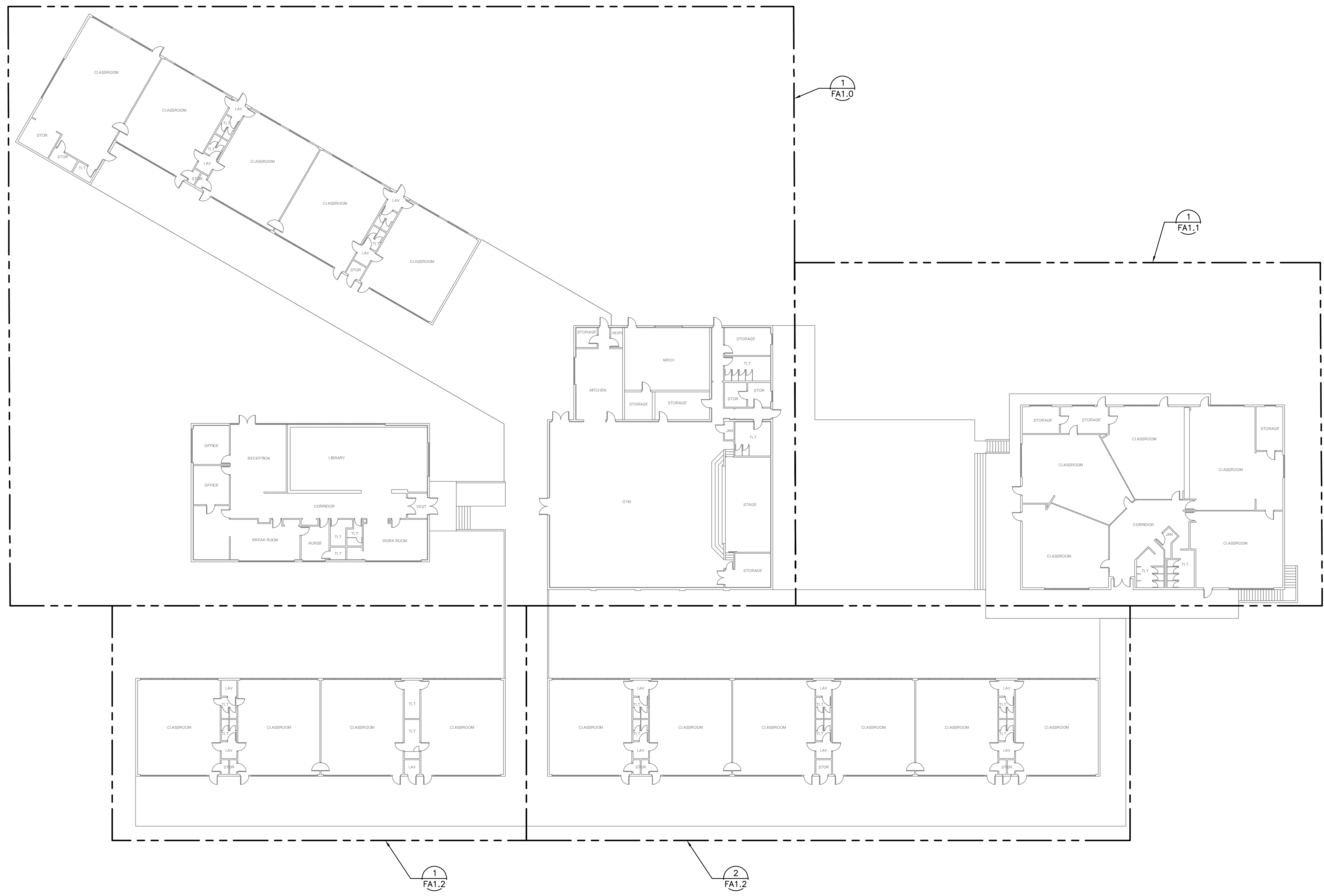


2026.04.24 15:52:15-07'00"

**GENERAL NOTES**

A. THIS DRAWING IS NOT FOR PERMIT OR CONSTRUCTION. THIS DRAWING PROVIDES THE GENERAL DESIGN INTENT FOR THE SYSTEMS, EQUIPMENT, COMPONENTS, ETC. SHOWN. THE FINAL DESIGN CALCULATIONS, SIZES, CAPACITIES, EQUIPMENT SELECTIONS, ETC. ARE THE SOLE RESPONSIBILITY OF THE BIDDER DESIGN CONTRACTOR. ALL DESIGN AND OTHER WORK SHALL BE IN COMPLIANCE WITH THE SPECIFICATION, CODES, AND STANDARD OF CARE.



**1 SITE PLAN**  
FA0.1 SCALE: 1" = 20'-0"  
SCALE IN FEET  
1" = 20'-0"

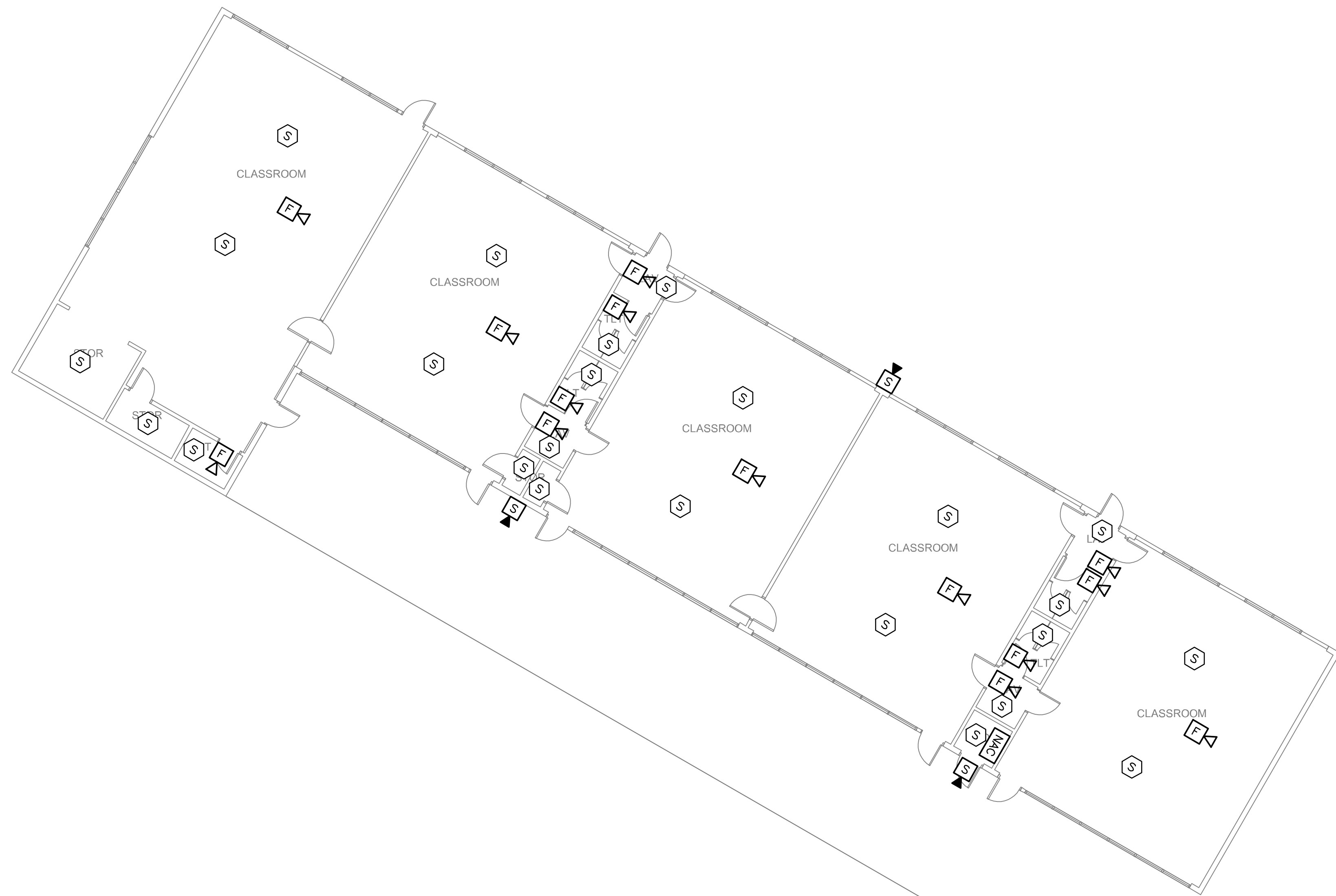
FOR DESIGN INTENT ONLY



MRK	DATE	DESCRIPTION
0	4/7/26	ISSUE FOR BID

JOB NUMBER:  
**2602.4**

SHEET:  
**FA0.1**  
FIRE ALARM  
SITE PLAN



**GENERAL NOTES**

- A. ALL WORK TO MEET APPLICABLE NEC, NFPA 72, AND LOCAL CODES.
- B. DRAWINGS ARE DIAGRAMMATIC. DEVICE LOCATIONS MAY DIFFER FROM DRAWINGS.
- C. DEVICE LOCATIONS ARE NOT ALL CONFIRMED AS SHOWN IN DRAWINGS. SOME DEVICES MAY NOT BE PRESENT IN FIELD AND SOME DEVICES MAY NOT BE SHOWN ON DRAWINGS. CONTRACTOR TO FIELD VERIFY DEVICE TYPES AND LOCATIONS.
- D. DRAWINGS ARE FOR REFERENCE FOR BIDDING PURPOSES ONLY AND REFLECT CURRENT SITE LAYOUT AS OBSERVED.
- E. CONTRACTOR TO PROVIDE FULL FIRE ALARM SYSTEM DESIGN DOCUMENTS.
- F. CONTRACTOR IS RESPONSIBLE FOR FIRE ALARM SYSTEM DEVICE TYPES AND LOCATIONS NEEDED FOR CODE COMPLIANT SYSTEM.
- G. THIS DRAWING IS NOT FOR PERMIT OR CONSTRUCTION. THIS DRAWING PROVIDES THE GENERAL DESIGN INTENT FOR THE SYSTEMS, EQUIPMENT, COMPONENTS, ETC. SHOWN. THE FINAL DESIGN CALCULATIONS, SIZES, CAPACITIES, EQUIPMENT SELECTIONS, ETC. ARE THE SOLE RESPONSIBILITY OF THE BIDDER DESIGN CONTRACTOR. ALL DESIGN AND OTHER WORK SHALL BE IN COMPLIANCE WITH THE SPECIFICATION, CODES, AND STANDARD OF CARE.

**FIRE ALARM COMMUNICATIONS AND PANELS**

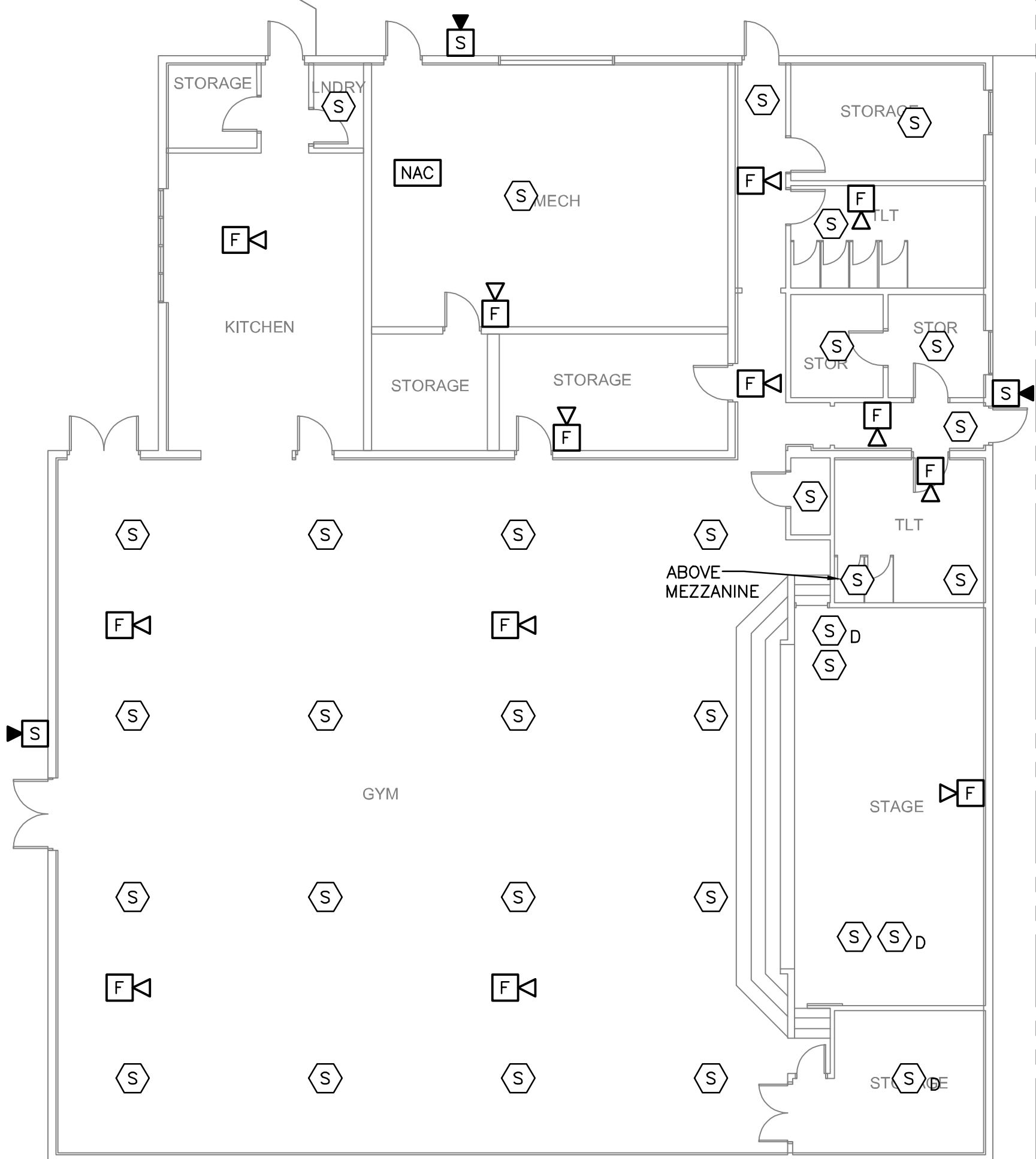
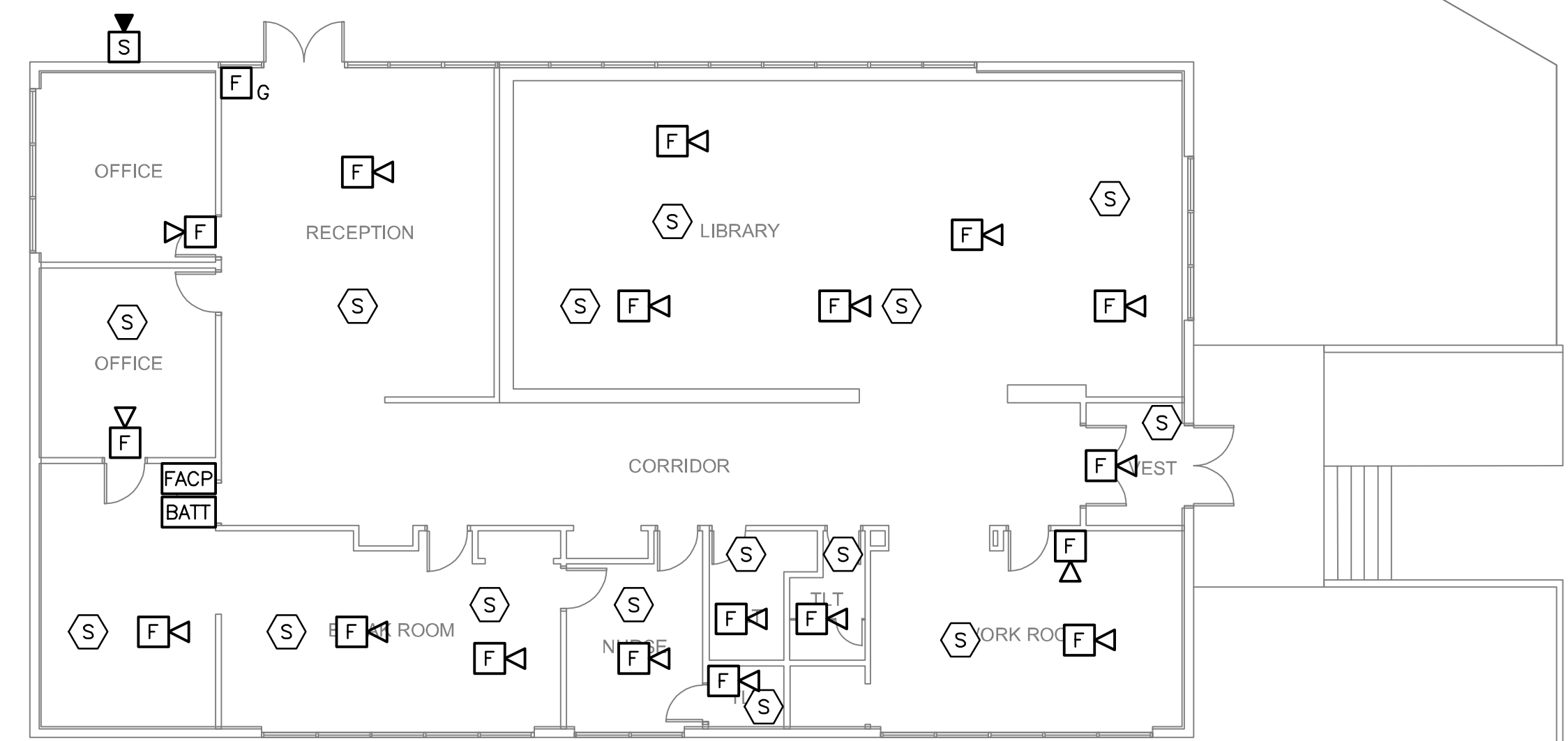
- FAA ANNUNCIATOR PANEL
- FACP FIRE ALARM CONTROL PANEL
- EVAC VOICE EVACUATION PANEL
- FATC FIRE ALARM TERMINAL CABINET
- BATT BATTERY PACK AND CHARTER
- NAC NOTIFICATION APPLIANCE CIRCUIT

**FIRE ALARM INDICATORS**

- F<sub>K</sub> HORN AND STROBE
- F<sub>G</sub> F<sub>K</sub> DEVICE PROTECTED BY GUARD FROM PHYSICAL DAMAGE AND TAMPERING.
- H HORN UNIT ONLY
- S<sub>K</sub> STROBE UNIT ONLY

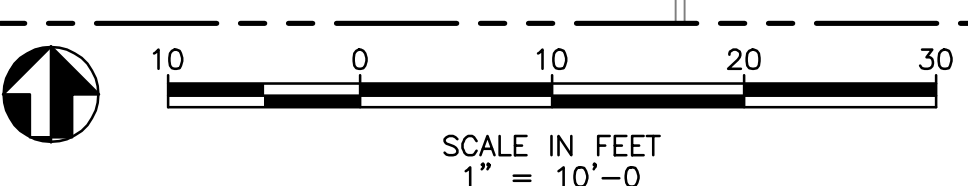
**FIRE ALARM SENSORS**

- F MANUAL PULL STATION
- F<sub>G</sub> DEVICE PROTECTED BY GUARD FROM PHYSICAL DAMAGE AND TAMPERING.
- S SMOKE DETECTOR
- S<sub>D</sub> DUCT SMOKE DETECTOR



CONTINUED ON DRAWING FA1.2

**1 PARTIAL FLOOR PLAN - FIRE ALARM**  
FA1.0 SCALE: 1" = 10'-0"



CONTINUED ON DRAWING FA1.2

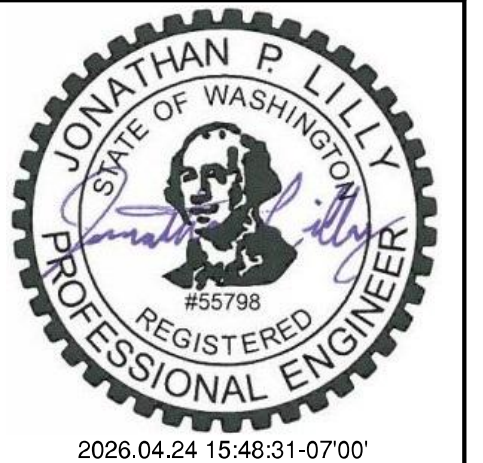
**FOR DESIGN INTENT ONLY**

**R&W ENGINEERING, INC.**  
9615 S.W. Allen Boulevard  
Suite 107  
Beverton, Oregon 97005  
Phone: (503) 726-3208  
Office: (503) 292-6200  
E-mail: rweg@rweg.com  
Project No.: 983.045.001 Contact: S. HOLLMAN



LONGVIEW, WA  
NEWBERG, OR  
WWW.BRITTELLARCH.COM

**Columbia Heights Elementary**  
2820 Parkview Dr., Longview, WA 98632



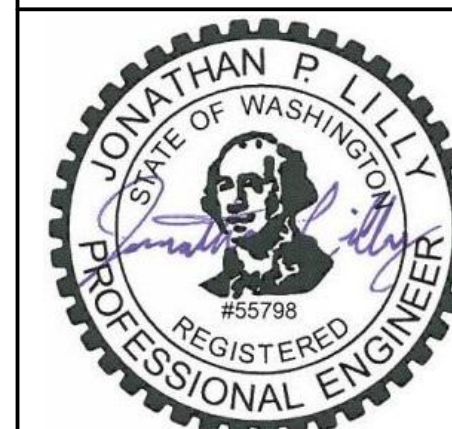
MRK	DATE	DESCRIPTION
0	4/7/26	ISSUE FOR BID

JOB NUMBER:  
**2602.4**

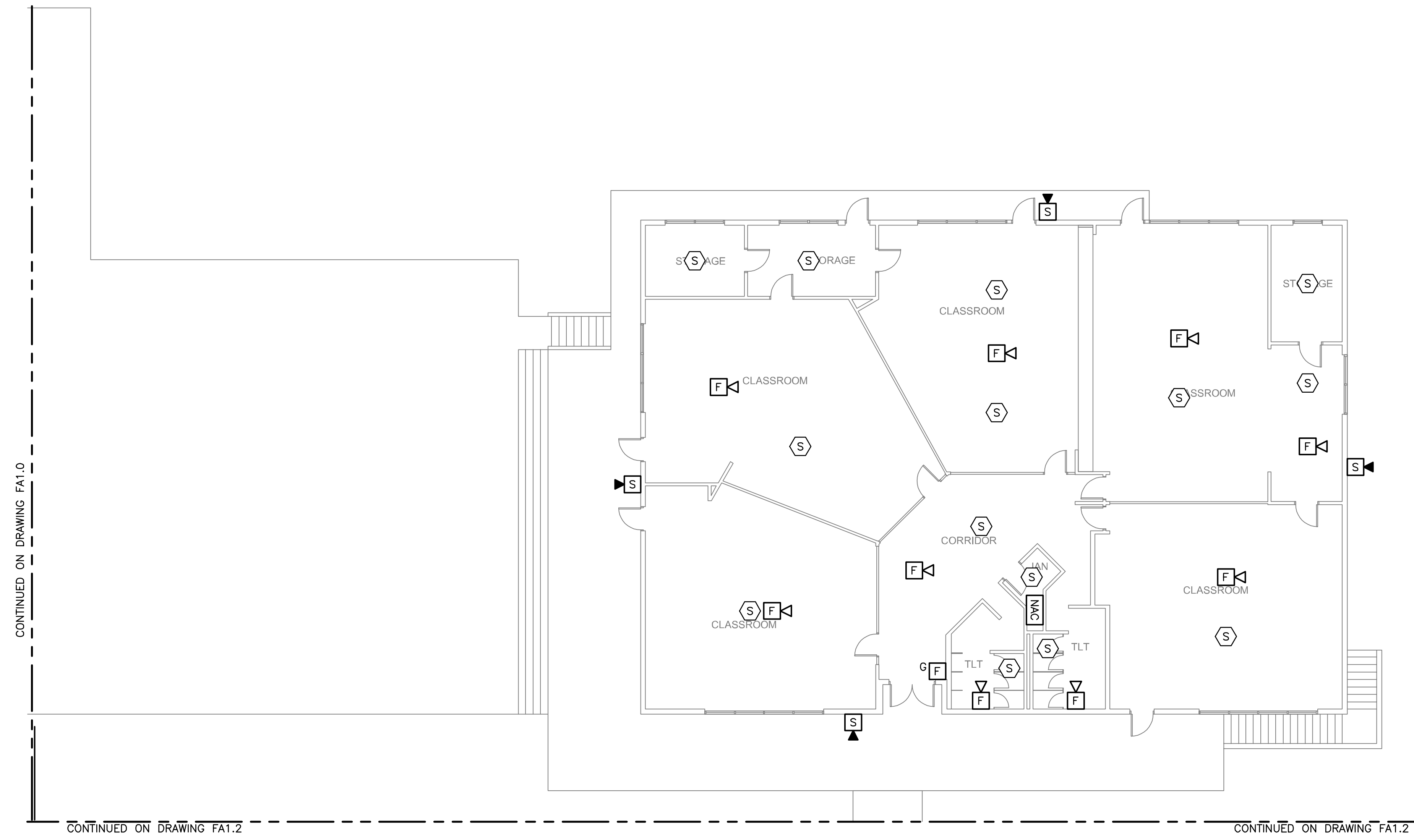
SHEET:

**FA1.0**

FIRE ALARM  
PARTIAL FLOOR PLAN



2026.04.24 15:49:19-0700



**FIRE ALARM COMMUNICATIONS AND PANELS**

- FAA** ANNUNCIATOR PANEL
- FACP** FIRE ALARM CONTROL PANEL
- EVAC** VOICE EVACUATION PANEL
- FATC** FIRE ALARM TERMINAL CABINET
- BATT** BATTERY PACK AND CHARTER
- NAC** NOTIFICATION APPLIANCE CIRCUIT

**FIRE ALARM INDICATORS**

- F** HORN AND STROBE
- F** DEVICE PROTECTED BY GUARD FROM PHYSICAL DAMAGE AND TAMPERING.
- H** HORN UNIT ONLY
- S** STROBE UNIT ONLY

**FIRE ALARM SENSORS**

- F** MANUAL PULL STATION
- F** DEVICE PROTECTED BY GUARD FROM PHYSICAL DAMAGE AND TAMPERING.
- S** SMOKE DETECTOR
- S** DUCT SMOKE DETECTOR

**GENERAL NOTES**

- A. ALL WORK TO MEET APPLICABLE NEC, NFPA 72, AND LOCAL CODES.
- B. DRAWINGS ARE DIAGRAMMATIC. DEVICE LOCATIONS MAY DIFFER FROM DRAWINGS.
- C. DEVICE LOCATIONS ARE NOT ALL CONFIRMED AS SHOWN IN DRAWINGS. SOME DEVICES MAY NOT BE PRESENT IN FIELD AND SOME DEVICES MAY NOT BE SHOWN ON DRAWINGS. CONTRACTOR TO FIELD VERIFY DEVICE TYPES AND LOCATIONS.
- D. DRAWINGS ARE FOR REFERENCE FOR BIDDING PURPOSES ONLY AND REFLECT CURRENT SITE LAYOUT AS OBSERVED.
- E. CONTRACTOR TO PROVIDE FULL FIRE ALARM SYSTEM DESIGN DOCUMENTS.
- F. CONTRACTOR IS RESPONSIBLE FOR FIRE ALARM SYSTEM DEVICE TYPES AND LOCATIONS NEEDED FOR CODE COMPLIANT SYSTEM.
- G. THIS DRAWING IS NOT FOR PERMIT OR CONSTRUCTION. THIS DRAWING PROVIDES THE GENERAL DESIGN INTENT FOR THE SYSTEMS, EQUIPMENT, COMPONENTS, ETC. SHOWN. THE FINAL DESIGN CALCULATIONS, SIZES, CAPACITIES, EQUIPMENT SELECTIONS, ETC. ARE THE SOLE RESPONSIBILITY OF THE BIDDER DESIGN CONTRACTOR. ALL DESIGN AND OTHER WORK SHALL BE IN COMPLIANCE WITH THE SPECIFICATION, CODES, AND STANDARD OF CARE.

CONTINUED ON DRAWING FA1.0

CONTINUED ON DRAWING FA1.2

CONTINUED ON DRAWING FA1.2

**1 PARTIAL FLOOR PLAN - FIRE ALARM**  
FA1.1 SCALE: 1" = 10'-0"  
SCALE IN FEET  
1" = 10'-0"

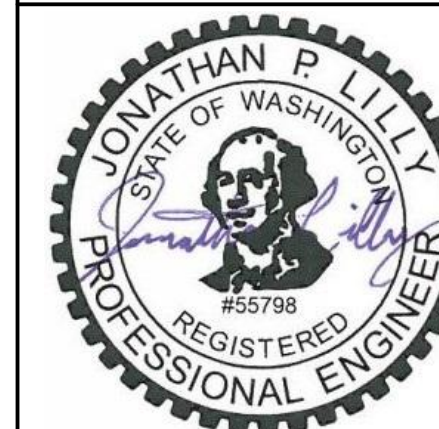
FOR DESIGN INTENT ONLY

9615 S.W. Allen Boulevard  
Suite 107  
Staverton, Oregon 97095  
Phone: (503) 726-3328  
Office: (503) 292-6000  
E-mail: rverg@rweg.com  
Project No.: 983.045.001 Contact: S. HOLMANN

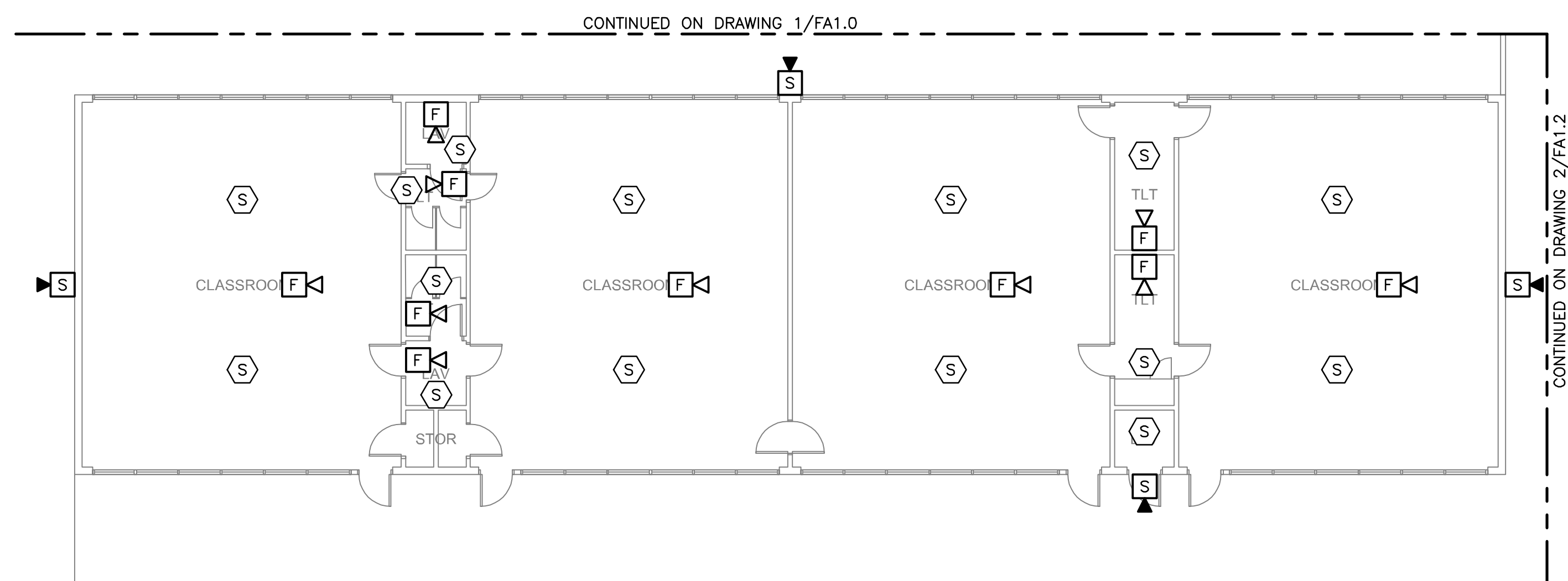
MRK	DATE	DESCRIPTION
0	4/27/26	ISSUE FOR BID

JOB NUMBER:  
**2602.4**

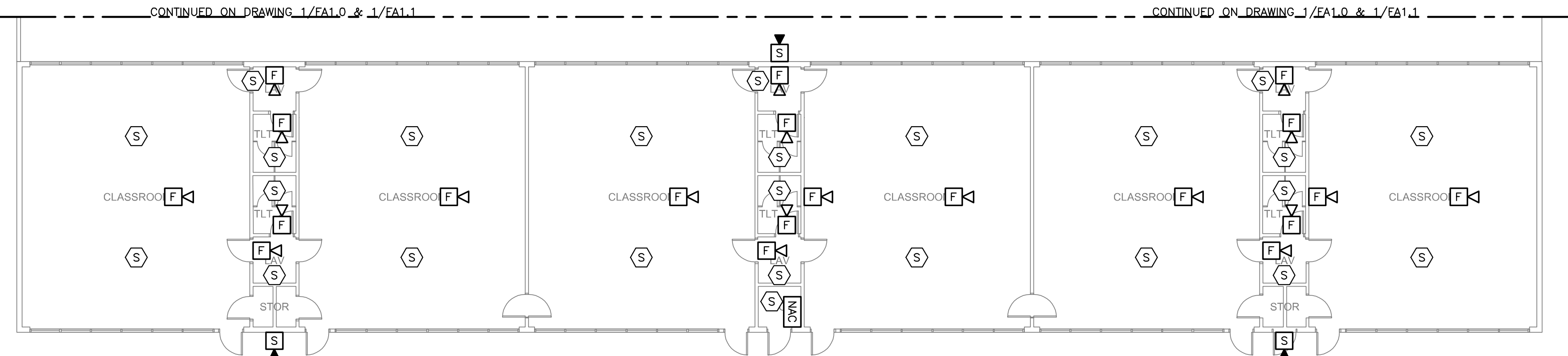
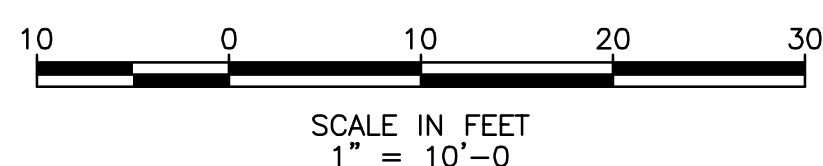
SHEET:  
**FA1.1**  
FIRE ALARM  
PARTIAL FLOOR PLAN



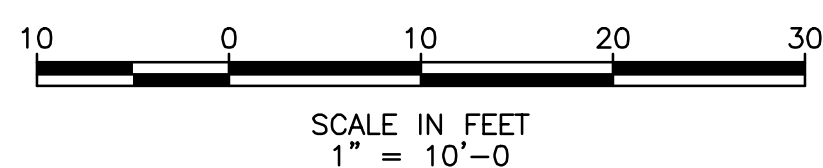
2026.04.24 15:48:54-0700



1 PARTIAL FLOOR PLAN - FIRE ALARM  
FA1.2 SCALE: 1" = 10'-0"



2 PARTIAL FLOOR PLAN - FIRE ALARM  
FA1.2 SCALE: 1" = 10'-0"



FIRE ALARM COMMUNICATIONS AND PANELS

- FAA ANNUNCIATOR PANEL
- FACP FIRE ALARM CONTROL PANEL
- EVAC VOICE EVACUATION PANEL
- FATC FIRE ALARM TERMINAL CABINET
- BATT BATTERY PACK AND CHARTER
- NAC NOTIFICATION APPLIANCE CIRCUIT

FIRE ALARM INDICATORS

- F HORN AND STROBE
- G F DEVICE PROTECTED BY GUARD FROM PHYSICAL DAMAGE AND TAMPERING.
- H HORN UNIT ONLY
- S STROBE UNIT ONLY

FIRE ALARM SENSORS

- F MANUAL PULL STATION
- F G DEVICE PROTECTED BY GUARD FROM PHYSICAL DAMAGE AND TAMPERING.
- S SMOKE DETECTOR
- S D DUCT SMOKE DETECTOR

GENERAL NOTES

- A. ALL WORK TO MEET APPLICABLE NEC, NFPA 72, AND LOCAL CODES.
- B. DRAWINGS ARE DIAGRAMMATIC. DEVICE LOCATIONS MAY DIFFER FROM DRAWINGS.
- C. DEVICE LOCATIONS ARE NOT ALL CONFIRMED AS SHOWN IN DRAWINGS. SOME DEVICES MAY NOT BE PRESENT IN FIELD AND SOME DEVICES MAY NOT BE SHOWN ON DRAWINGS. CONTRACTOR TO FIELD VERIFY DEVICE TYPES AND LOCATIONS.
- D. DRAWINGS ARE FOR REFERENCE FOR BIDDING PURPOSES ONLY AND REFLECT CURRENT SITE LAYOUT AS OBSERVED.
- E. CONTRACTOR TO PROVIDE FULL FIRE ALARM SYSTEM DESIGN DOCUMENTS.
- F. CONTRACTOR IS RESPONSIBLE FOR FIRE ALARM SYSTEM DEVICE TYPES AND LOCATIONS NEEDED FOR CODE COMPLIANT SYSTEM.
- G. THIS DRAWING IS NOT FOR PERMIT OR CONSTRUCTION. THIS DRAWING PROVIDES THE GENERAL DESIGN INTENT FOR THE SYSTEMS, EQUIPMENT, COMPONENTS, ETC. SHOWN. THE FINAL DESIGN CALCULATIONS, SIZES, CAPACITIES, EQUIPMENT SELECTIONS, ETC. ARE THE SOLE RESPONSIBILITY OF THE BIDDER DESIGN CONTRACTOR. ALL DESIGN AND OTHER WORK SHALL BE IN COMPLIANCE WITH THE SPECIFICATION, CODES, AND STANDARD OF CARE.

CONTINUED ON DRAWING 1/FA1.2

CONTINUED ON DRAWING 2/FA1.2

CONTINUED ON DRAWING 1/FA1.0 & 1/FA1.1

CONTINUED ON DRAWING 1/FA1.0 & 1/FA1.1

FOR DESIGN INTENT ONLY



FA1.2

FIRE ALARM  
PARTIAL FLOOR PLANS

MRK	DATE	DESCRIPTION
0	4/27/26	ISSUE FOR BID

JOB NUMBER:  
2602.4

SHEET: