

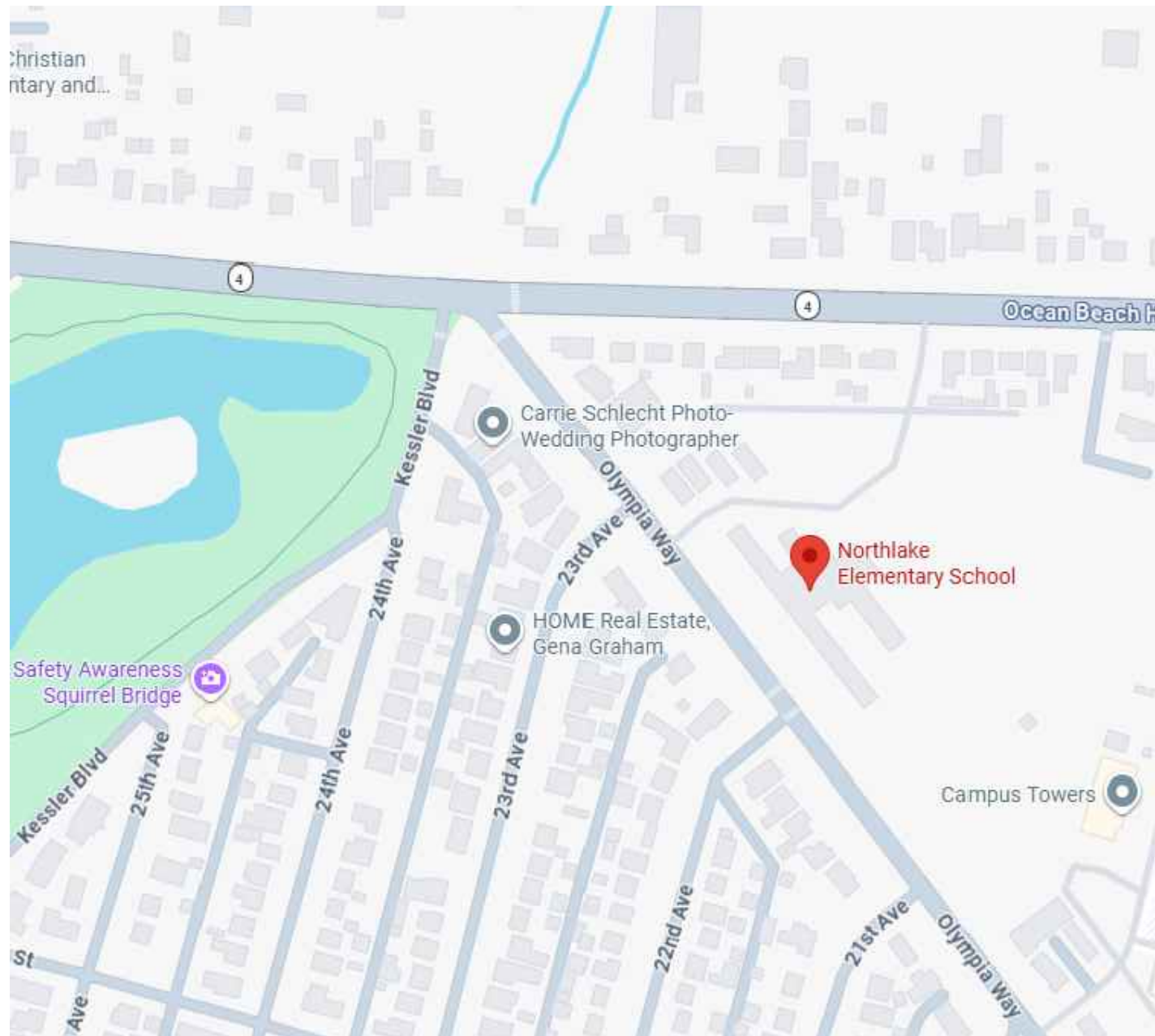
Northlake Elementary School Fire Alarm

Longview School District



LONGVIEW, WA
NEWBERG, OR
WWW.BRITTELLARCH.COM

VICINITY MAP



PROJECT DESCRIPTION

The Project consists of the replacement of the existing fire alarm system. Also included is the installation of fire alarm strobe lights at the front and rear exterior of the building to support emergency notification for the hearing impaired.

BUILDING INFORMATION

APPLICABLE CODES

BUILDING 2021 International Building Code (IBC) with Washington State amendments

ELECTRICAL 2023 National Electrical Code (NEC/NFPA 70) with Washington State amendments

DRAWINGS ARE BASED ON EXISTING INFORMATION AND HAVE NOT BEEN FIELD VERIFIED. FIELD VERIFY ALL CONDITIONS AND REPORT TO ARCHITECT ANY VARIANCES FROM CONDITIONS INDICATED.

TEAM

Owner:
Longview School District
2715 Lilac Street
Longview, WA 98632
Ph: 360-575-7991

Architect:
Brittell Architecture, Inc.
3660 Cedarbrook Dr
Longview, WA 98632
Ph: 360-636-5074

Mechanical/ Electrical Engineer:
R&W Engineering Inc.
9615 SW Allen Blvd #107
Beaverton, OR 97005
503-292-6000

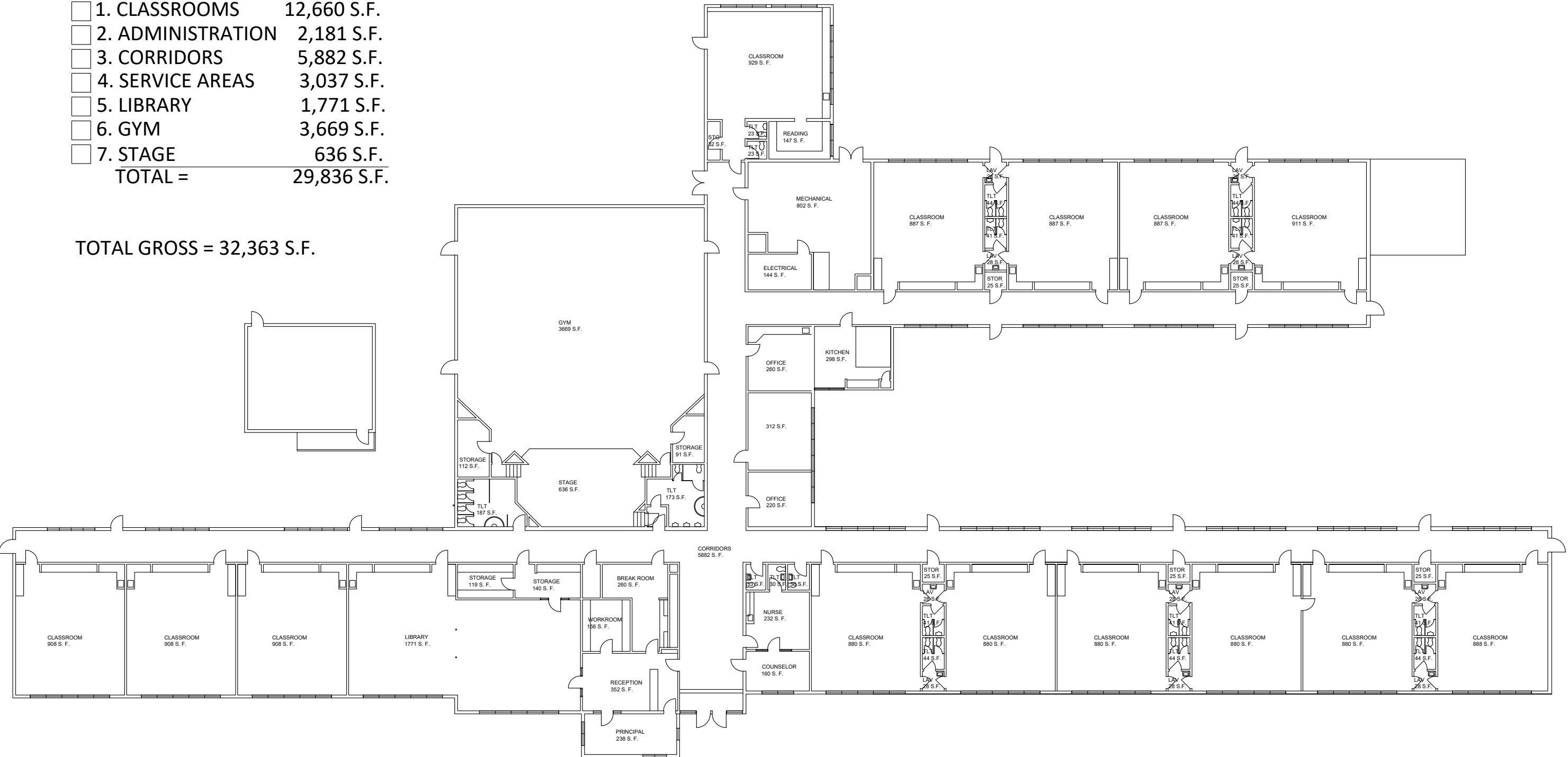
Northlake Elementary School
Longview, WA 98632



AREA FLOOR PLAN

- 1. CLASSROOMS 12,660 S.F.
- 2. ADMINISTRATION 2,181 S.F.
- 3. CORRIDORS 5,882 S.F.
- 4. SERVICE AREAS 3,037 S.F.
- 5. LIBRARY 1,771 S.F.
- 6. GYM 3,669 S.F.
- 7. STAGE 636 S.F.
- TOTAL = 29,836 S.F.**

TOTAL GROSS = 32,363 S.F.



DRAWING INDEX

G1	Cover Sheet
FA0.1	Fire Alarm Site Plan
FA1.0	Fire Alarm Plans
FA1.1	Fire Alarm Plans

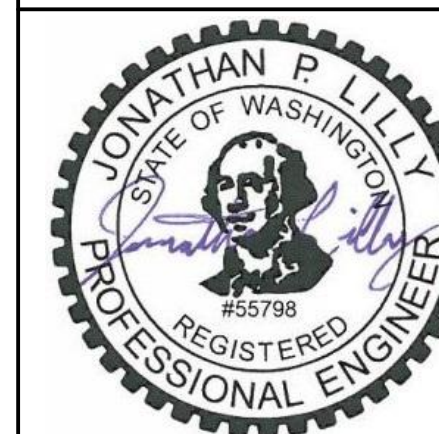
MRK	DATE	DESCRIPTION
0	4/27/26	ISSUE FOR BID

JOB NUMBER:
2602.1

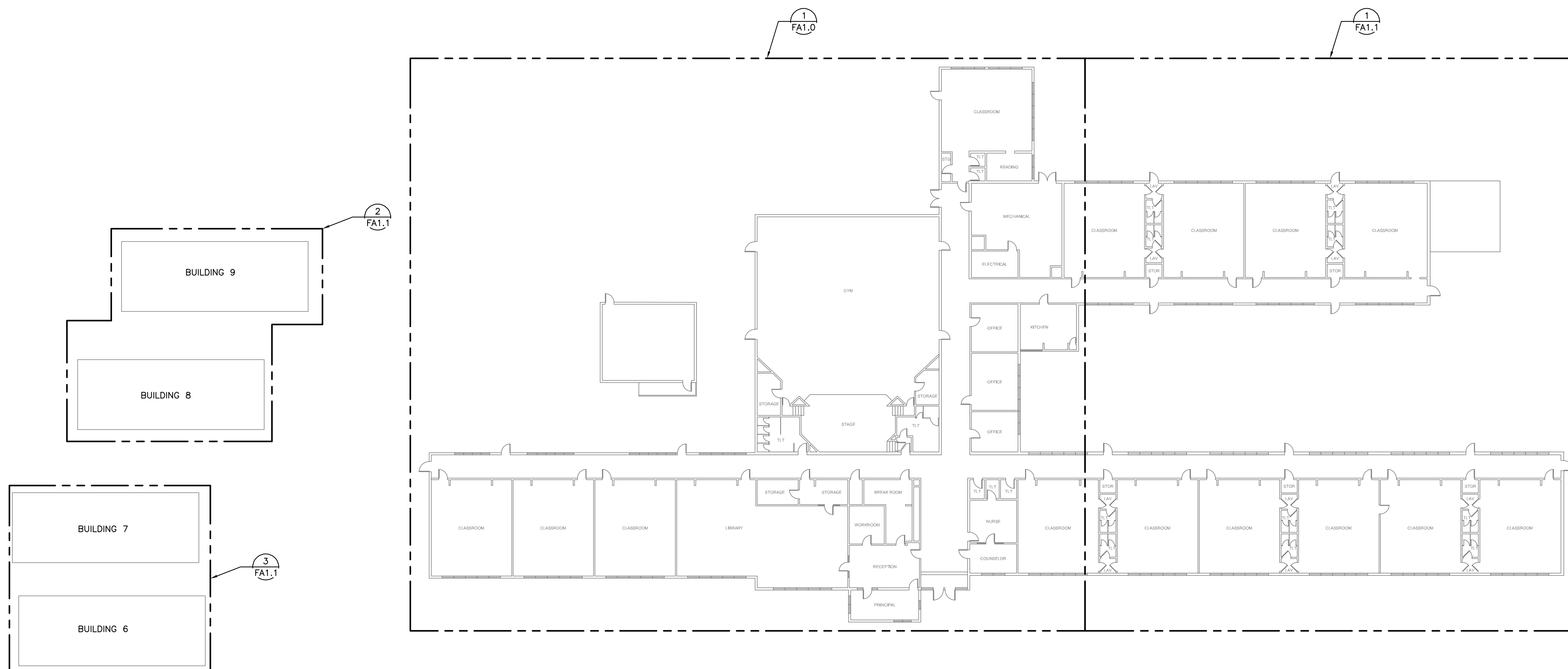
SHEET:
G1

COVER SHEET

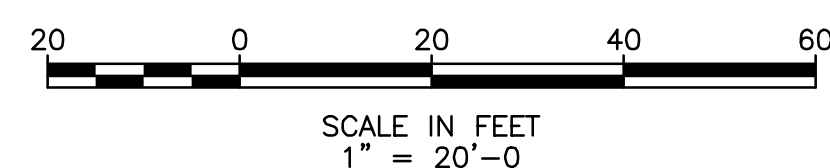
Northlake Elementary School
Longview, WA 98632



2028.04.24 16:05:08-0700'



1
FA0.1
SITE PLAN
SCALE: 1" = 20'-0"



GENERAL NOTES

- A. THIS DRAWING IS NOT FOR PERMIT OR CONSTRUCTION. THIS DRAWING PROVIDES THE GENERAL DESIGN INTENT FOR THE SYSTEMS, EQUIPMENT, COMPONENTS, ETC. SHOWN. THE FINAL DESIGN CALCULATIONS, SIZES, CAPACITIES, EQUIPMENT SELECTIONS, ETC. ARE THE SOLE RESPONSIBILITY OF THE BIDDER DESIGN CONTRACTOR. ALL DESIGN AND OTHER WORK SHALL BE IN COMPLIANCE WITH THE SPECIFICATION, CODES, AND STANDARD OF CARE.

FOR DESIGN INTENT ONLY



MRK	DATE	DESCRIPTION
0	4/27/26	ISSUE FOR BID

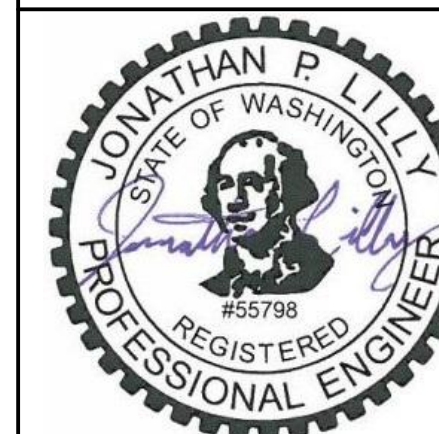
JOB NUMBER:

2602.1

SHEET:

FA0.1

FIRE ALARM
SITE SHEET



2026.04.24 16:09:09-0700

FIRE ALARM COMMUNICATIONS AND PANELS

- FAA** ANNUNCIATOR PANEL
- FACP** FIRE ALARM CONTROL PANEL
- EVAC** VOICE EVACUATION PANEL
- FATC** FIRE ALARM TERMINAL CABINET
- BATT** BATTERY PACK AND CHARGER
- NAC** NOTIFICATION APPLIANCE CIRCUIT

FIRE ALARM INDICATORS

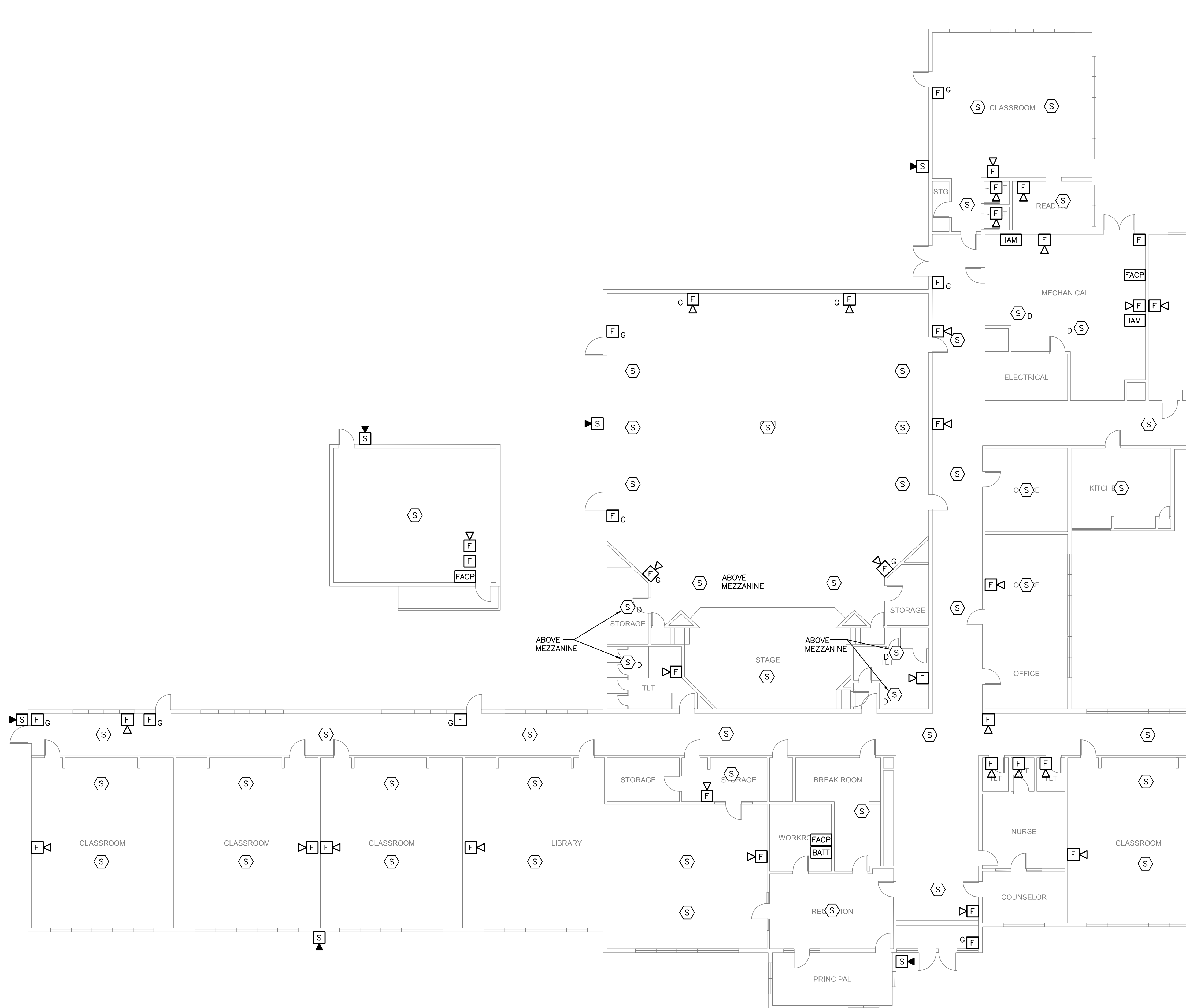
- F** HORN AND STROBE
- G F** DEVICE PROTECTED BY GUARD FROM PHYSICAL DAMAGE AND TAMPERING.
- H** HORN UNIT ONLY
- S** STROBE UNIT ONLY

FIRE ALARM SENSORS

- F** MANUAL PULL STATION
- G F** DEVICE PROTECTED BY GUARD FROM PHYSICAL DAMAGE AND TAMPERING.
- S** SMOKE DETECTOR
- S_D** DUCT SMOKE DETECTOR

GENERAL NOTES

- A. ALL WORK TO MEET APPLICABLE NEC, NFPA 72, AND LOCAL CODES.
- B. DRAWINGS ARE DIAGRAMMATIC. DEVICE LOCATIONS MAY DIFFER FROM DRAWINGS.
- C. DEVICE LOCATIONS ARE NOT ALL CONFIRMED AS SHOWN IN DRAWINGS. SOME DEVICES MAY NOT BE PRESENT IN FIELD AND SOME DEVICES MAY NOT BE SHOWN ON DRAWINGS. CONTRACTOR TO FIELD VERIFY DEVICE TYPES AND LOCATIONS.
- D. DRAWINGS ARE FOR REFERENCE FOR BIDDING PURPOSES ONLY AND REFLECT CURRENT SITE LAYOUT AS OBSERVED.
- E. CONTRACTOR TO PROVIDE FULL FIRE ALARM SYSTEM DESIGN DOCUMENTS.
- F. CONTRACTOR IS RESPONSIBLE FOR FIRE ALARM SYSTEM DEVICE TYPES AND LOCATIONS NEEDED FOR CODE COMPLIANT SYSTEM.
- G. THIS DRAWING IS NOT FOR PERMIT OR CONSTRUCTION. THIS DRAWING PROVIDES THE GENERAL DESIGN INTENT FOR THE SYSTEMS, EQUIPMENT, COMPONENTS, ETC. SHOWN. THE FINAL DESIGN CALCULATIONS, SIZES, CAPACITIES, EQUIPMENT SELECTIONS, ETC. ARE THE SOLE RESPONSIBILITY OF THE BIDDER DESIGN CONTRACTOR. ALL DESIGN AND OTHER WORK SHALL BE IN COMPLIANCE WITH THE SPECIFICATION, CODES, AND STANDARD OF CARE.



CONTINUED ON DRAWING FA1.1

1 FLOOR PLAN - FIRE ALARM
FA1.0 SCALE: 1" = 10'-0"
SCALE IN FEET
1" = 10'-0"

FOR DESIGN INTENT ONLY

9615 S.W. Allen Boulevard
Suite 107
Staverton, Oregon 97095
Phone: (503) 726-3328
Office: (503) 292-6000
E-mail: rweg@rweg.com
Project No.: 983.045.001 Contact: S. HOJMAN

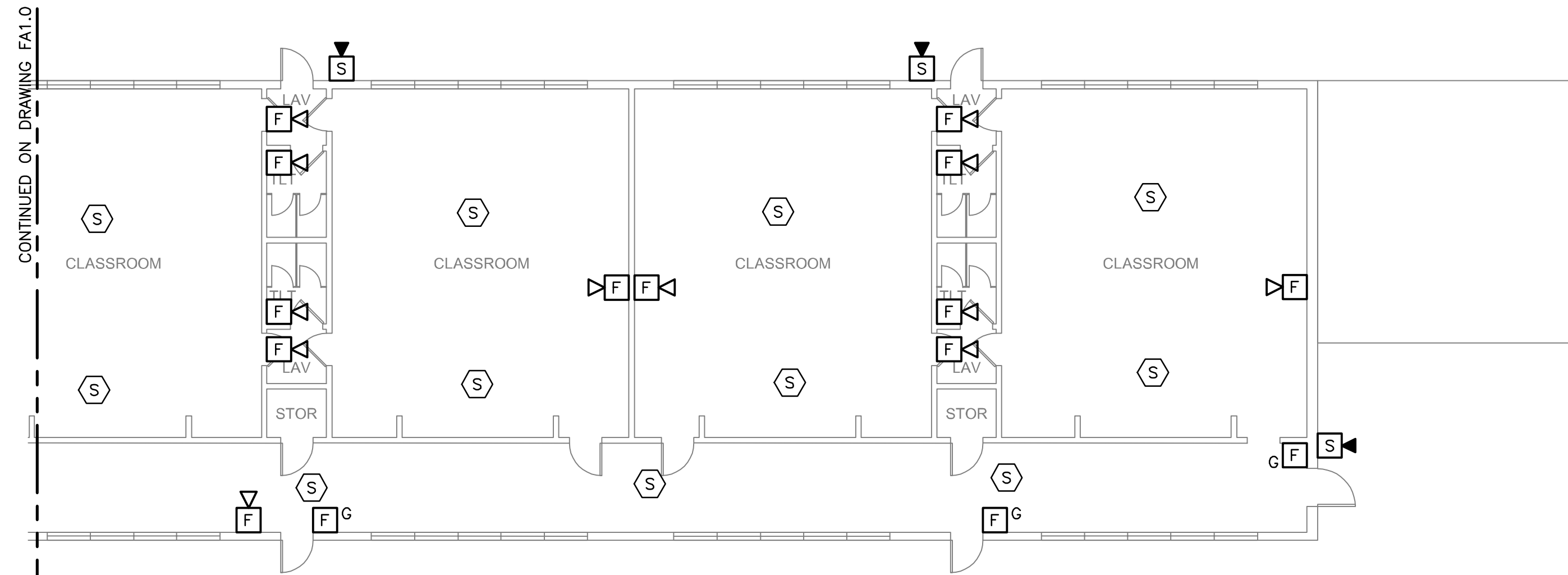
MRK	DATE	DESCRIPTION
0	4/27/26	ISSUE FOR BID

JOB NUMBER:
2602.1

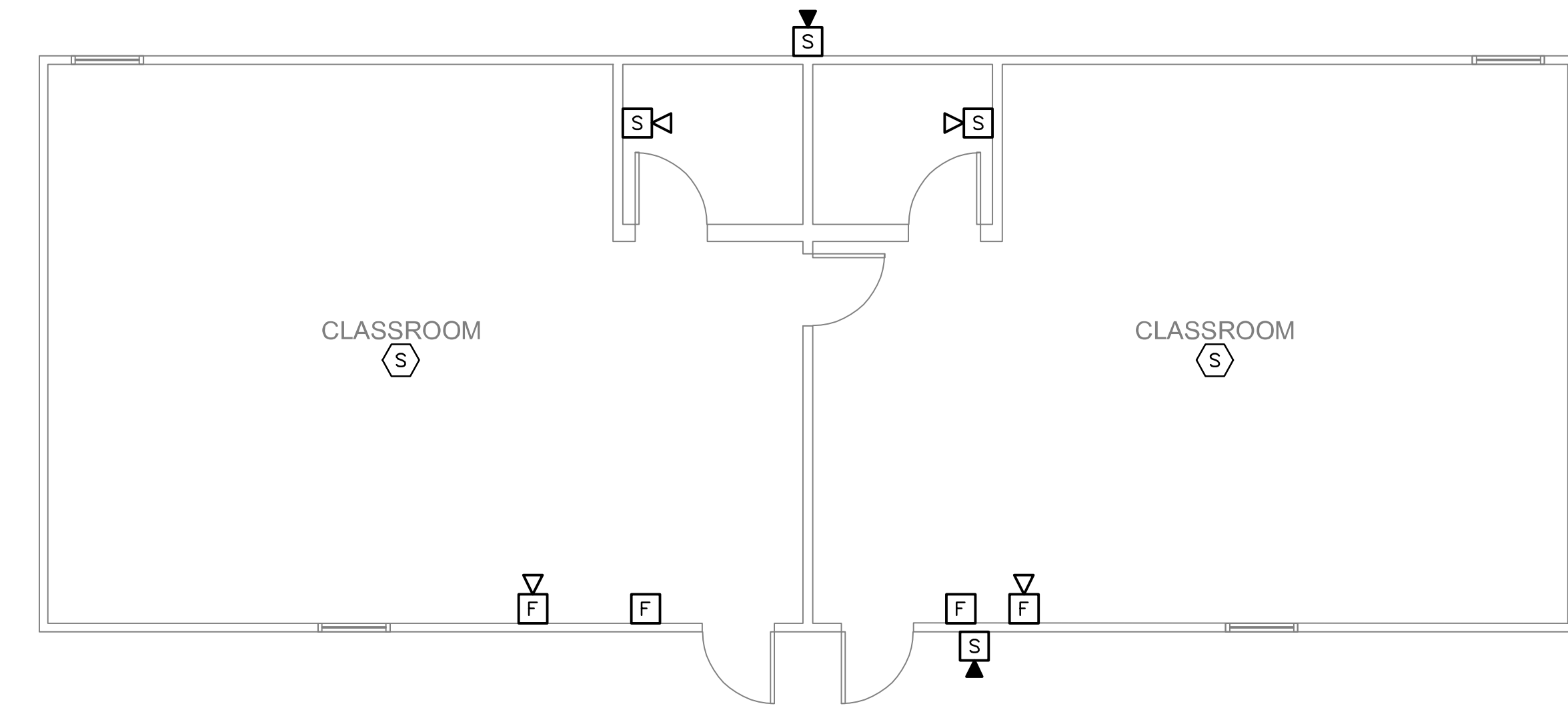
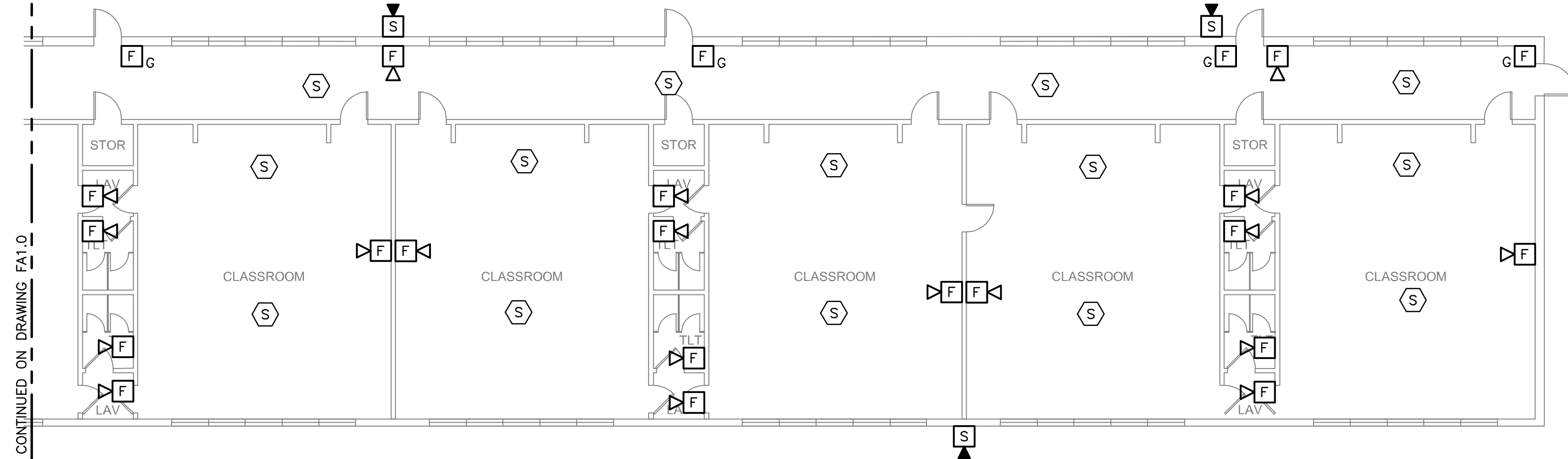
SHEET:

FA1.0

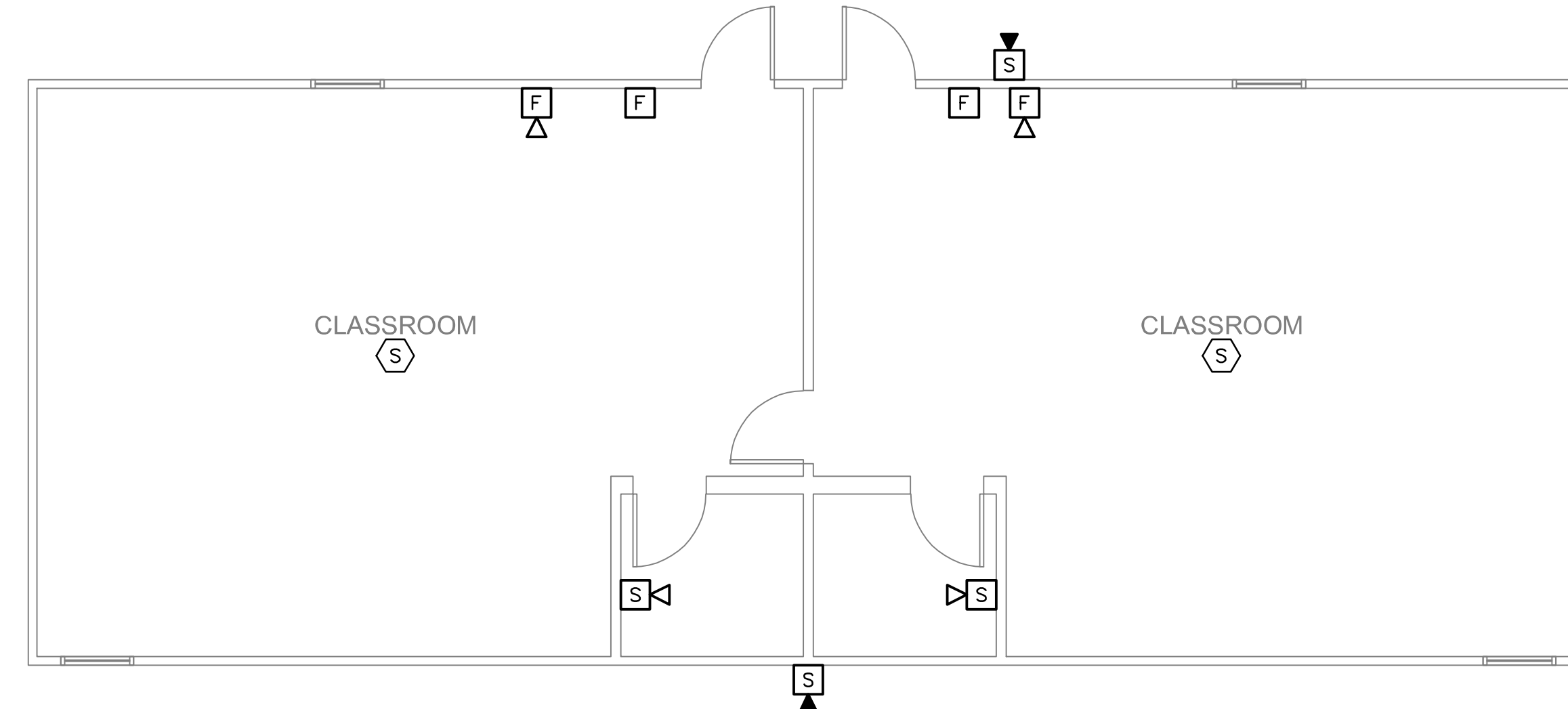
FIRE ALARM PLAN



1 FLOOR PLAN - FIRE ALARM
 FA1.1 SCALE: 1" = 10'-0"
 SCALE IN FEET
 1" = 10'-0"



2 FLOOR PLAN - PORTABLE CLASSROOM BLDGS 8 & 9
 FA1.1 SCALE: 3/16" = 1'-0"
 SCALE IN FEET
 3/16" = 1'-0"



3 FLOOR PLAN - PORTABLE CLASSROOM BLDGS 6 & 7
 FA1.1 SCALE: 3/16" = 1'-0"
 SCALE IN FEET
 3/16" = 1'-0"

GENERAL NOTES

- A. ALL WORK TO MEET APPLICABLE NEC, NFPA 72, AND LOCAL CODES.
- B. DRAWINGS ARE DIAGRAMMATIC. DEVICE LOCATIONS MAY DIFFER FROM DRAWINGS.
- C. DEVICE LOCATIONS ARE NOT ALL CONFIRMED AS SHOWN IN DRAWINGS. SOME DEVICES MAY NOT BE PRESENT IN FIELD AND SOME DEVICES MAY NOT BE SHOWN ON DRAWINGS. CONTRACTOR TO FIELD VERIFY DEVICE TYPES AND LOCATIONS.
- D. DRAWINGS ARE FOR REFERENCE FOR BIDDING PURPOSES ONLY AND REFLECT CURRENT SITE LAYOUT AS OBSERVED.
- E. CONTRACTOR TO PROVIDE FULL FIRE ALARM SYSTEM DESIGN DOCUMENTS.
- F. CONTRACTOR IS RESPONSIBLE FOR FIRE ALARM SYSTEM DEVICE TYPES AND LOCATIONS NEEDED FOR CODE COMPLIANT SYSTEM.
- G. THIS DRAWING IS NOT FOR PERMIT OR CONSTRUCTION. THIS DRAWING PROVIDES THE GENERAL DESIGN INTENT FOR THE SYSTEMS, EQUIPMENT, COMPONENTS, ETC. SHOWN. THE FINAL DESIGN CALCULATIONS, SIZES, CAPACITIES, EQUIPMENT SELECTIONS, ETC. ARE THE SOLE RESPONSIBILITY OF THE BIDDER DESIGN CONTRACTOR. ALL DESIGN AND OTHER WORK SHALL BE IN COMPLIANCE WITH THE SPECIFICATION, CODES, AND STANDARD OF CARE.

FIRE ALARM COMMUNICATIONS AND PANELS

- FAA ANNUNCIATOR PANEL
- FACP FIRE ALARM CONTROL PANEL
- EVAC VOICE EVACUATION PANEL
- FATC FIRE ALARM TERMINAL CABINET
- BATT BATTERY PACK AND CHARTER
- NAC NOTIFICATION APPLIANCE CIRCUIT

FIRE ALARM INDICATORS

- F HORN AND STROBE
- G F DEVICE PROTECTED BY GUARD FROM PHYSICAL DAMAGE AND TAMPERING.
- H HORN UNIT ONLY
- S STROBE UNIT ONLY

FIRE ALARM SENSORS

- F MANUAL PULL STATION
- G F DEVICE PROTECTED BY GUARD FROM PHYSICAL DAMAGE AND TAMPERING.
- S SMOKE DETECTOR
- S_D DUCT SMOKE DETECTOR

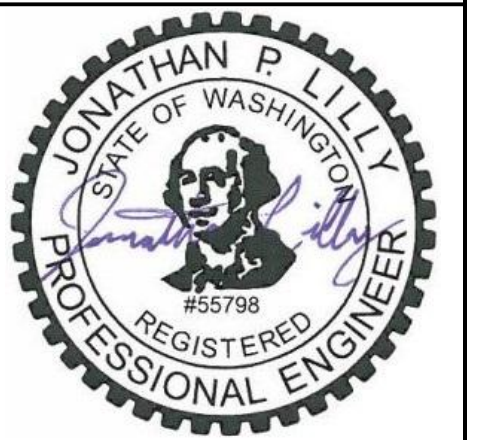
R&W
 ENGINEERING, INC.
 9615 S.W. Allen Boulevard
 Suite 107
 Staveley, Oregon 97095
 Phone: (503) 726-3328
 Office: (503) 292-6000
 E-mail: rweg@rweg.com
 Project No.: 983.045.001 Contact: S. HOJMAN

FOR DESIGN INTENT ONLY



LONGVIEW, WA
 NEWBERG, OR
 WWW.BRITTELLARCH.COM

Northlake Elementary School
 Longview, WA 98632



2026.04.24 16:09:49-0700

MRK	DATE	DESCRIPTION
0	4/27/26	ISSUE FOR BID

JOB NUMBER:
2602.1

SHEET:
FA1.1
 FIRE ALARM PLANS