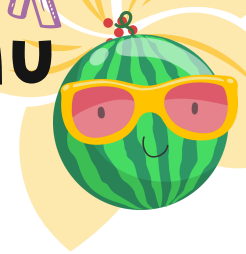




# Bridgeport ISD

## Intermediate Cafeteria Menu

HELLO  
SUMMER



### May 2026

MONDAY	TUESDAY	WEDNESDAY	THURSDAY	FRIDAY
				1 Dutch Waffle with Fruit OR Cereal & String Cheese *** Selfie Pepperoni Pizza Cheese Stuffed Breadsticks Marinara Sauce Crinkle Cut Fries Fresh Broccoli
4 Honey Bun OR Cereal & Cheese Cubes *** Breaded Chicken Sandwich Two Chicken Egg Rolls Tater Tots Baby Carrots	5 Sausage Biscuit OR Cereal & Grahams *** Crispitos with Cheese Sauce Beef Tamales Ranchero Beans Fiesta Side Salad	6 Fruit & Yogurt Parfait OR Cereal & Goldfish *** Chicken Smackers Salisbury Steak Hot Roll Mashed Potatoes & Gravy Whole Kernel Corn	7 Waffle & Sausage Sandwich OR Cereal & Toast *** Italian Pasta Bake Garlic Cheese Bread Italian Blend Vegetables Caesar Side Salad	8 Glazed Donut OR Cereal & String Cheese *** Cheese Pizza Sausage Wrap Potato Smiles Veggie Dippers
11 Sausage Kolache OR Cereal & Cheese Cubes *** Hamburger Cheeseburger Turkey & Cheese Sub Potato Smiles Baked Beans	12 Bacon, Egg & Cheese Croissant OR Cereal & Grahams *** Two Soft Tacos Bean & Cheese Papusa Corn on the Cob Lettuce & Tomato	13 Breakfast on a Stick OR Cereal & Goldfish *** Chicken & Waffles Chicken Fried Steak Sandwich Potato Wedges Green Beans with Ham	14 French Toast Sticks OR Cereal & Toast *** Corn Dog Potato Chips Baby Carrots	15 Concha OR Cereal & String Cheese *** Pepperoni Pizza Chicken Salad Croissant Crinkle Cut Fries Cherry Tomato Cup
18 Pancakes & Sausage OR Cereal & Cheese Cubes *** Bacon Cheeseburger Chicken Wings Buttermilk Biscuit Onion Rings Celery Sticks	19 Buttermilk Biscuit & Gravy OR Cereal & Grahams *** Cheese Nachos Fiestada Pizza Ranch Style Beans Garden Side Salad	20 Manager's Choice OR Cereal & Goldfish *** Popcorn Chicken Bites Crunchy Fish Sticks Hot Roll Mashed Potatoes & Gravy Whole Kernel Corn	21 Manager's Choice OR Cereal & Toast *** Corn Dog Potato Chips Baby Carrots	22

The menus on our website may not reflect last minute changes. 1% Unflavored and Fat Free Chocolate Milk are available along with two servings of vegetables and a variety of fruit choices daily. This institution is an equal employment provider.

