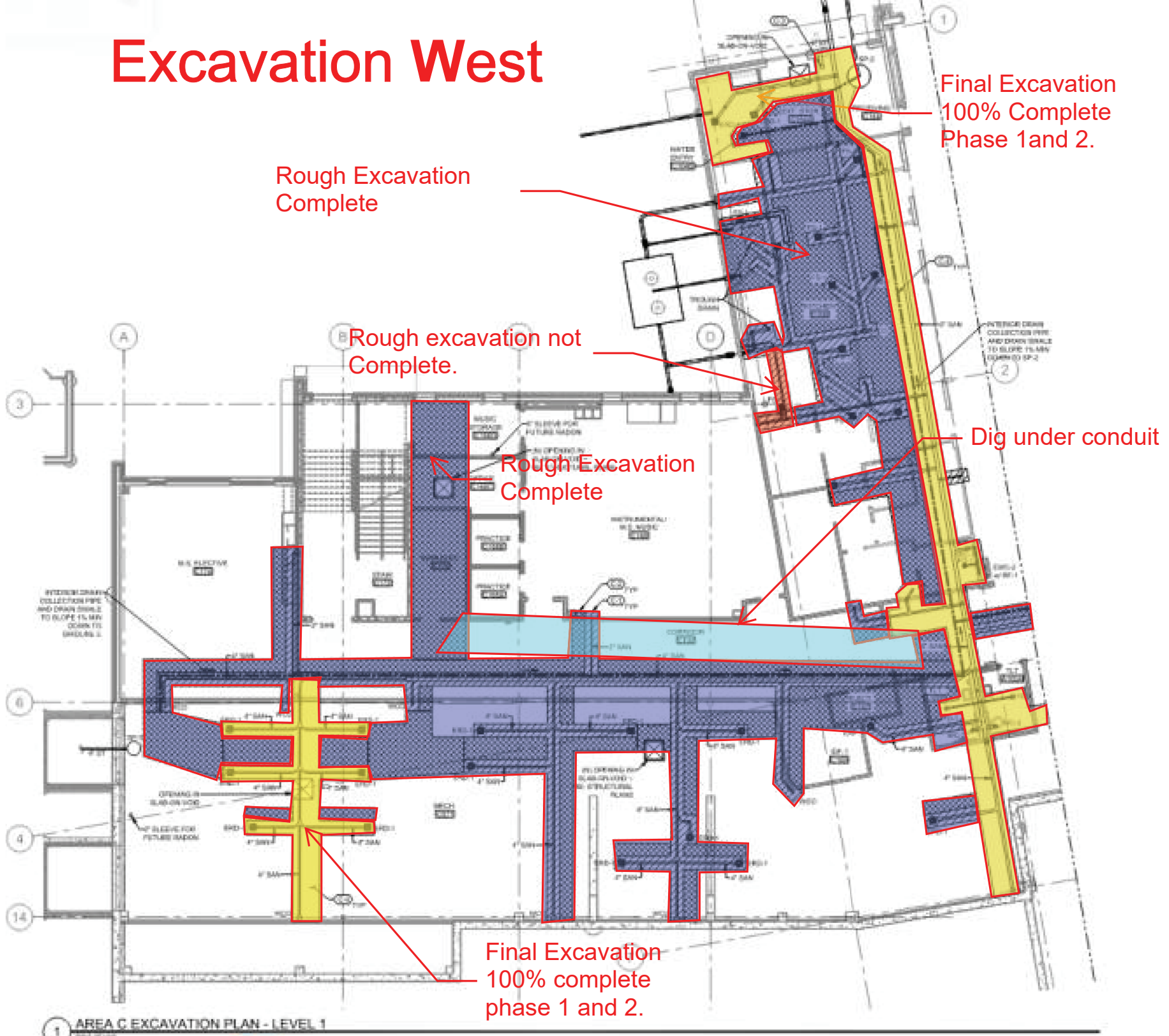


WEST WING

1. EXCAVATION PROGRESS
2. ELECTRICAL PROGRESS
3. PLUMBING PROGRESS

Excavation West



Rough Excavation Complete

Final Excavation 100% Complete Phase 1 and 2.

Rough excavation not Complete.

Rough Excavation Complete

Dig under conduit

Final Excavation 100% complete phase 1 and 2.

Electrical West



SECONDARY CONNECTION CABINET DETAIL

NOT TO SCALE - FOR REFERENCE USE ONLY; FIELD VERIFY ALL EXISTING CONDITIONS PRIOR TO BID

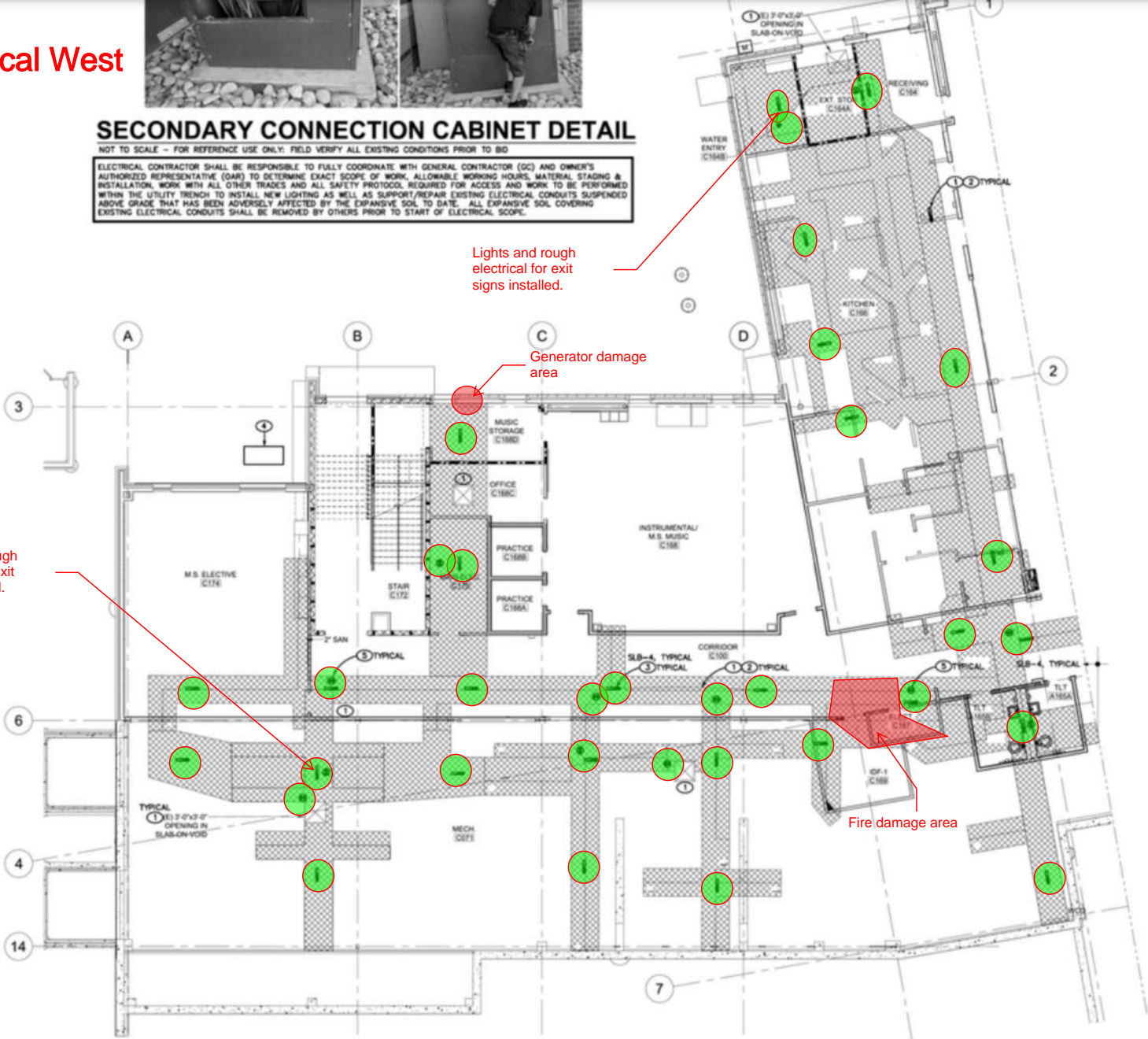
ELECTRICAL CONTRACTOR SHALL BE RESPONSIBLE TO FULLY COORDINATE WITH GENERAL CONTRACTOR (GC) AND OWNER'S AUTHORIZED REPRESENTATIVE (OAR) TO DETERMINE EXACT SCOPE OF WORK, ALLOWABLE WORKING HOURS, MATERIAL STAGING & INSTALLATION, WORK WITH ALL OTHER TRADES AND ALL SAFETY PROTOCOLS REQUIRED FOR ACCESS AND WORK TO BE PERFORMED WITHIN THE UTILITY TRENCH TO INSTALL NEW LIGHTING AS WELL AS SUPPORT/REPAIR EXISTING ELECTRICAL CONDUITS SUSPENDED ABOVE GRADE THAT HAS BEEN ADVERSELY AFFECTED BY THE EXPANSIVE SOIL TO DATE. ALL EXPANSIVE SOIL COVERING EXISTING ELECTRICAL CONDUITS SHALL BE REMOVED BY OTHERS PRIOR TO START OF ELECTRICAL SCOPE.

Lights and rough electrical for exit signs installed.

Lights and rough electrical for exit signs installed.

Generator damage area

Fire damage area



3. ELECTRICAL CONTRACTOR FOR ALLOW PERFORMED AND 1 FOR ALL SCOPE IN INSTALLATION ACC (IAHJ) AND OWNER
 4. LIGHT LOCATIONS, CONSTRUCTED OR UNCONSTRUCTED INDICATE EXACT LIGHT RESPONSIBLE TO CONTRACTOR TO BEST ILLUMINATE DARK SPACES. LIGHT CHANGE BY THE CONTRACTOR ALL OTHER SYSTEMS OPERABLE INSTALL
 5. REFER TO TYPICAL AND REQUIREMENT
- ### KEY NOTES
1. COORDINATE WITH GENERAL CONTRACTOR AND INSTALLATION INDICATOR
 2. PROVIDE 12/20 W BY THE IAHJ OR ABOVE). PROVIDE LOCATE ALL LIGHT
 3. PROVIDE SPECTRUM A-LAMP, TYPICAL AUTHORIZED REPAIR OR INSTALLING AN EQUIPMENT ALTERNATE LUMINA FEASIBLE ALTERNATE
 4. APPROXIMATE LOCATION COORDINATE WITH TO RE-LEVEL EXISTING NOTATED DUE TO UTILITY TO DE-EN EXISTING STRUCTURE BARS/WIRING DUR DAMAGE OBSERVE MOVEMENT TO DA ONCE EQUIPMENT COORDINATE WITH AND IN PROPER C
 5. PROVIDE DURABLE INDICATE EGRESS REQUIRED TO INCH SUPPORTS TO BE BY ADJACENT LUM REFLECTIVE OR LU

1 AREA 'C' PLAN
SCALE 1/4" = 1'-0"

Plumbing West

Irrigation line is touching the foundation.

Damaged plumbing and hangers completed.

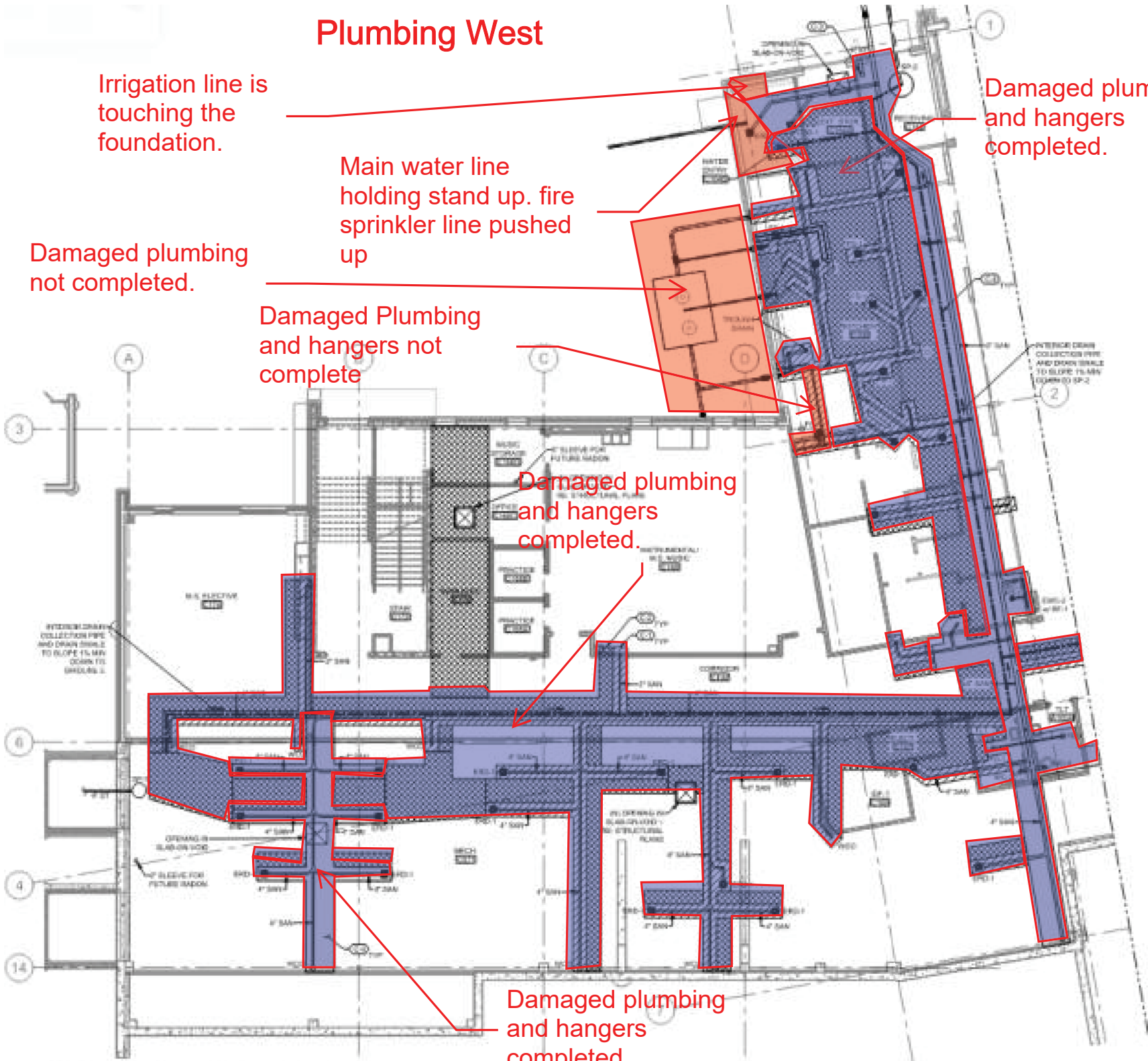
Main water line holding stand up. fire sprinkler line pushed up

Damaged plumbing not completed.

Damaged Plumbing and hangers not complete

Damaged plumbing and hangers completed.

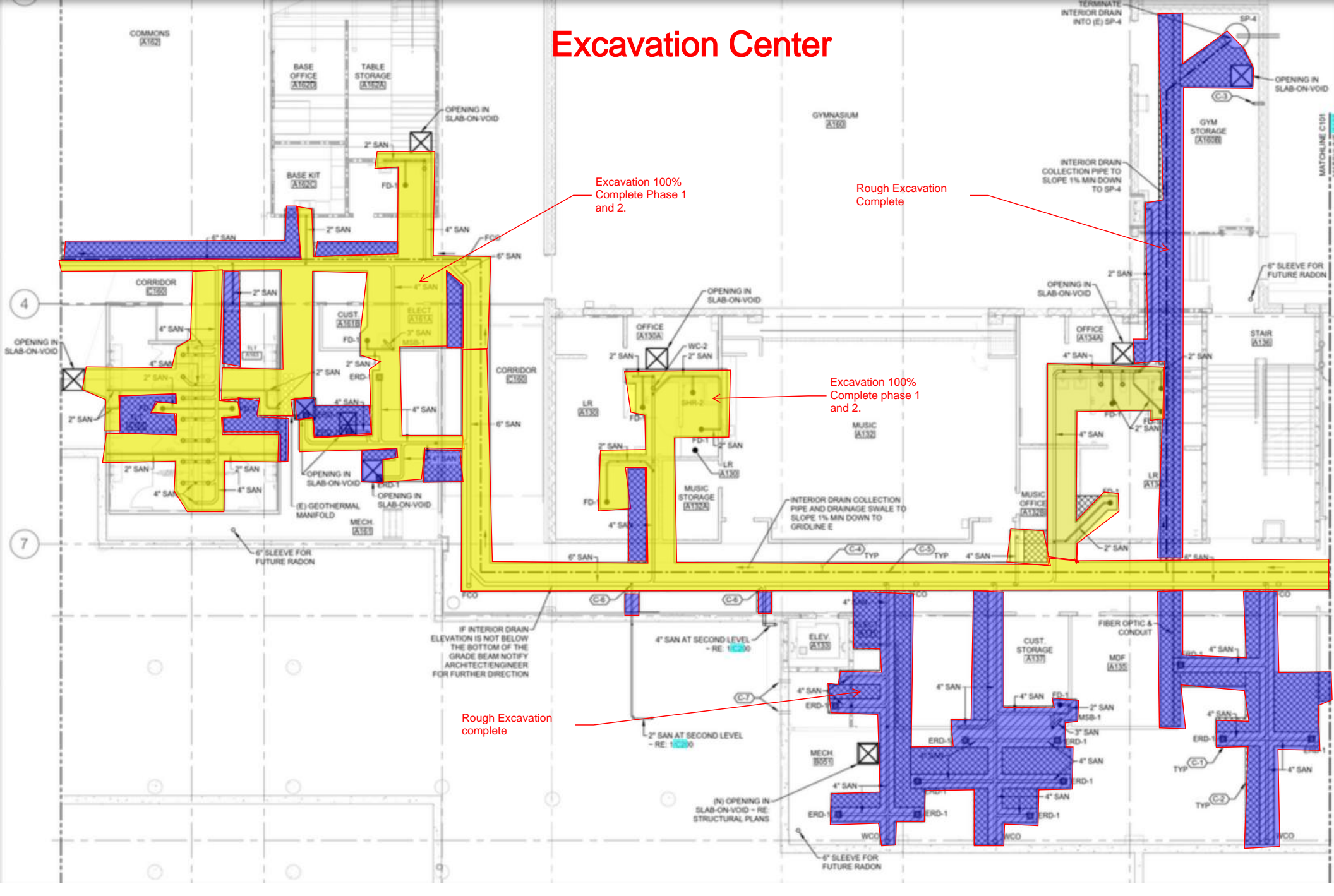
Damaged plumbing and hangers completed.



CENTER

1. EXCAVATION PROGRESS
2. ELECTRICAL PROGRESS
3. PLUMBING PROGRESS

Excavation Center



Excavation 100% Complete Phase 1 and 2.

Rough Excavation Complete

Excavation 100% Complete phase 1 and 2.

Rough Excavation complete

IF INTERIOR DRAIN ELEVATION IS NOT BELOW THE BOTTOM OF THE GRADE BEAM NOTIFY ARCHITECT/ENGINEER FOR FURTHER DIRECTION

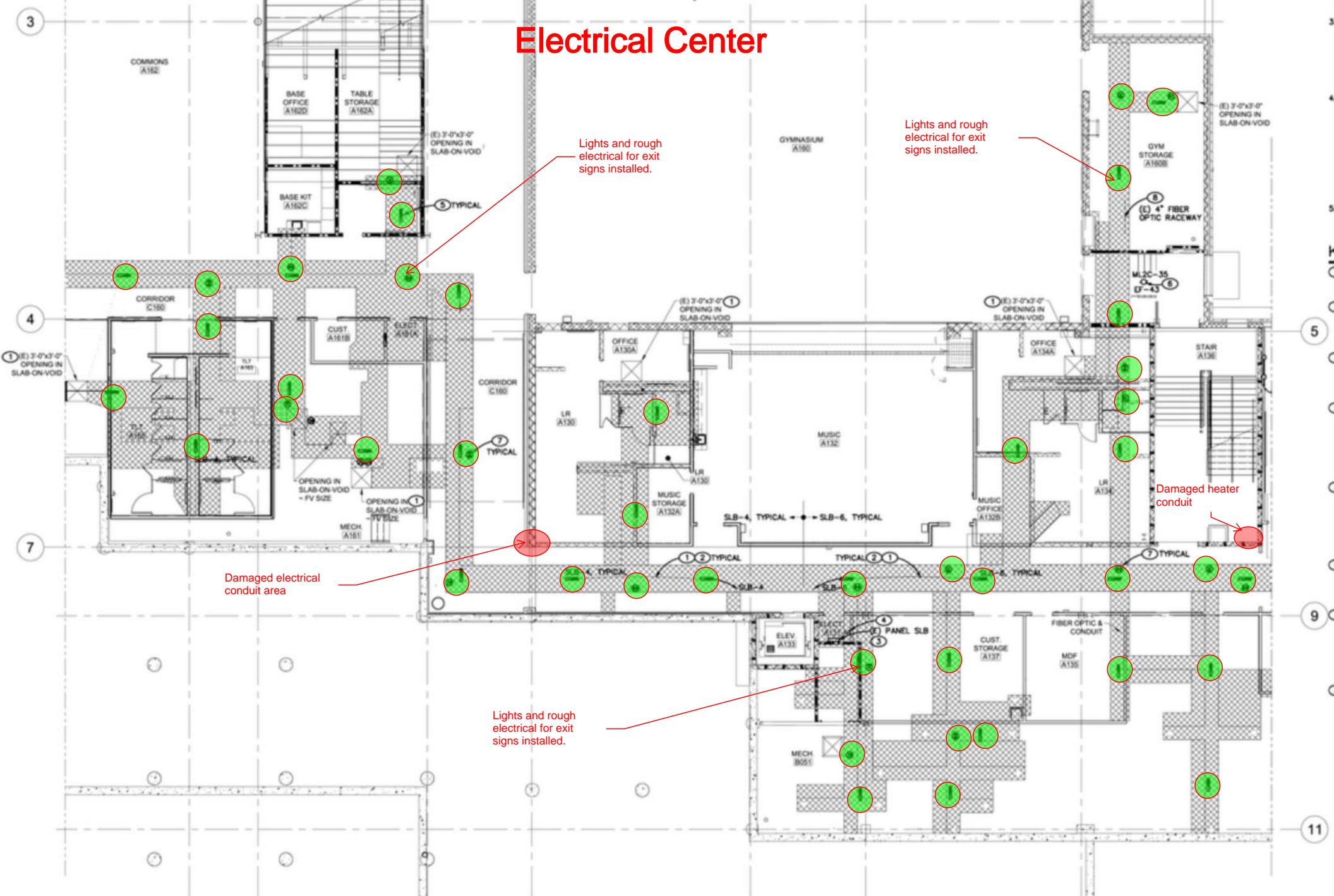
4" SAN AT SECOND LEVEL - RE: 10230

2" SAN AT SECOND LEVEL - RE: 10230

(N) OPENING IN SLAB-ON-VOID - RE: STRUCTURAL PLANS

6" SLEEVE FOR FUTURE RADON

Electrical Center



Lights and rough electrical for exit signs installed.

Lights and rough electrical for exit signs installed.

Damaged electrical conduit area

Damaged heater conduit

Lights and rough electrical for exit signs installed.

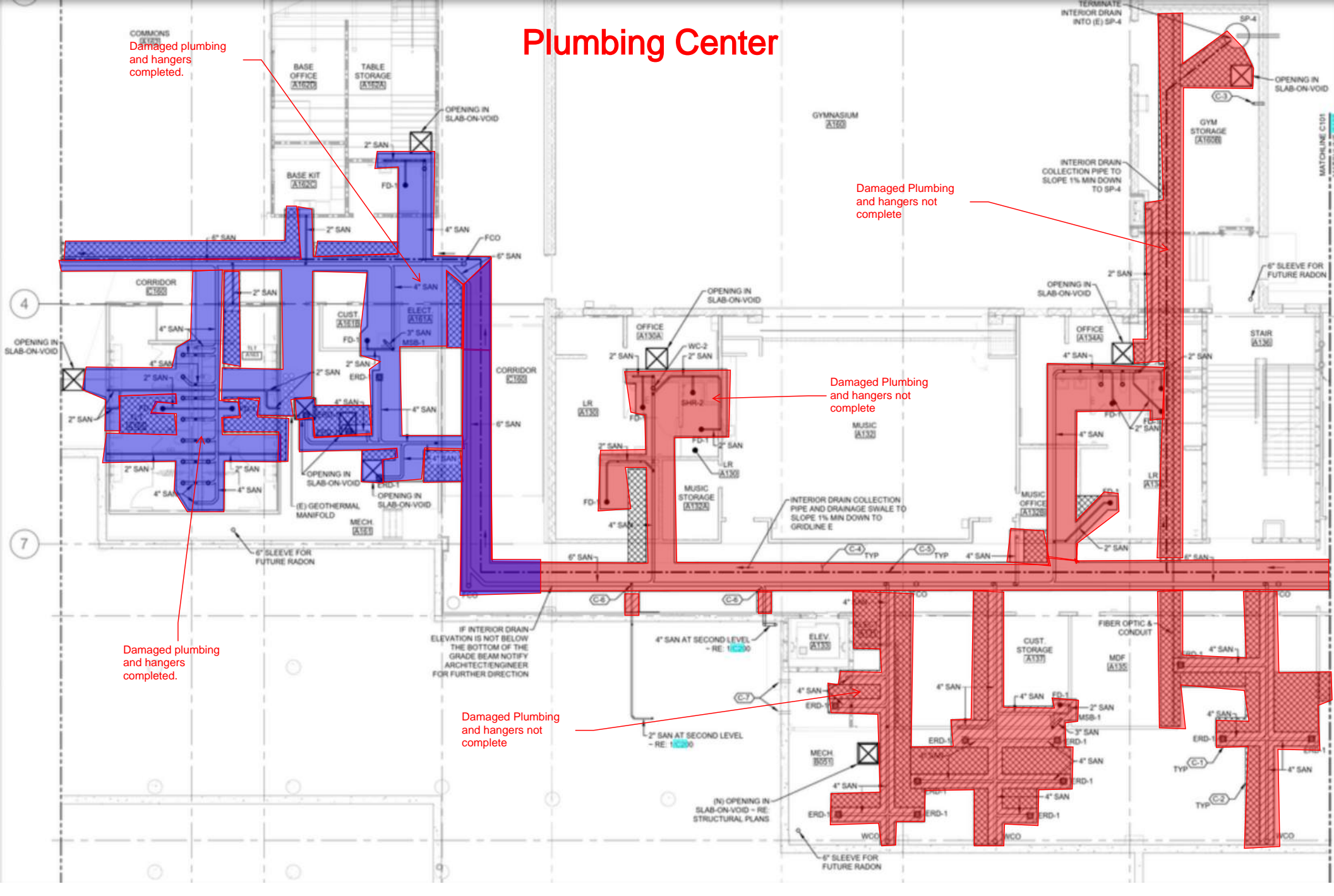
Plumbing Center

COMMONS
KITCHEN
Damaged plumbing
and hangers
completed.

Damaged Plumbing
and hangers not
complete

Damaged plumbing
and hangers
completed.

Damaged Plumbing
and hangers not
complete



EAST WING

1. EXCAVATION PROGRESS
2. ELECTRICAL PROGRESS
3. PLUMBING PROGRESS

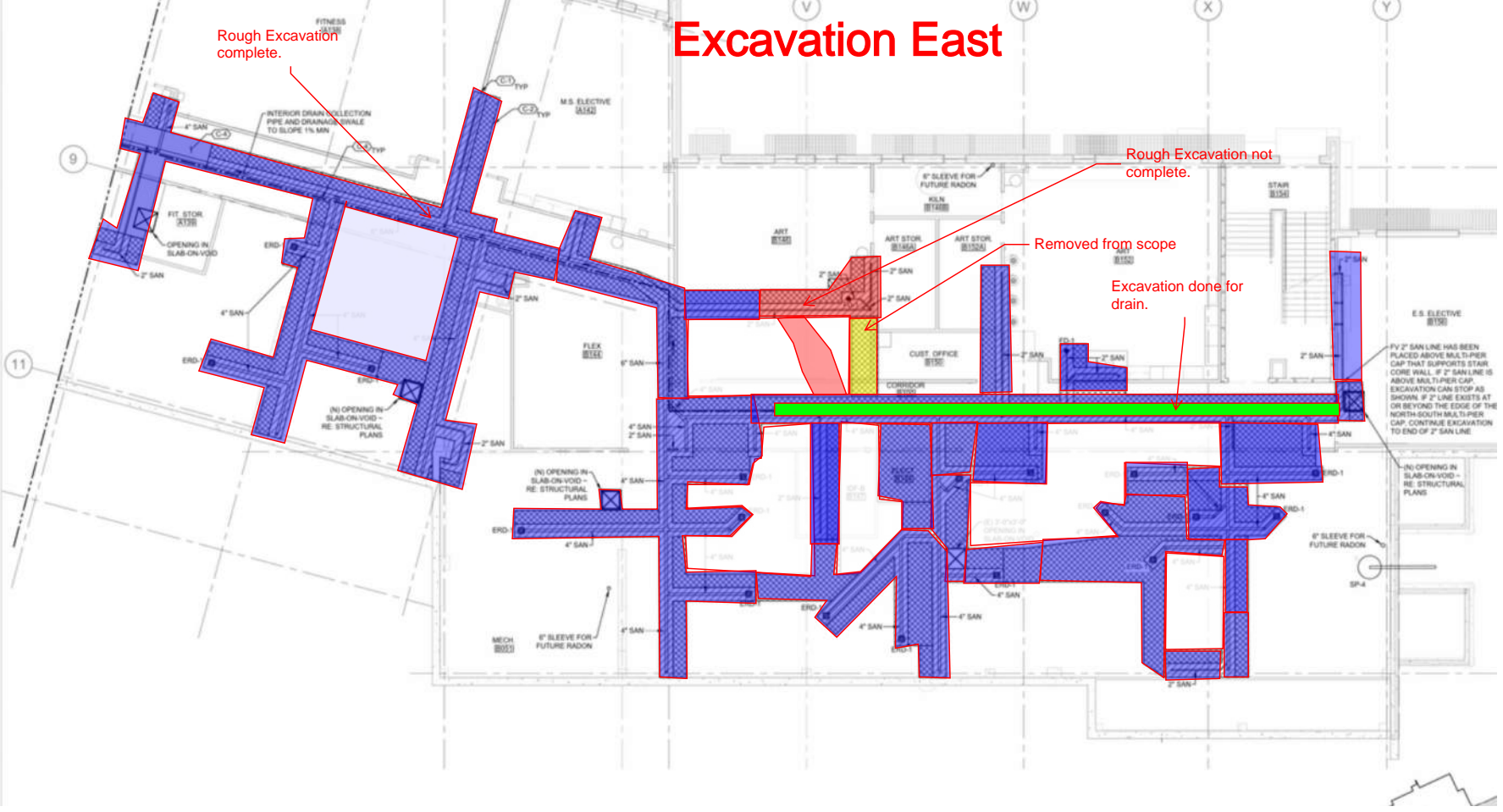
Excavation East

Rough Excavation complete.

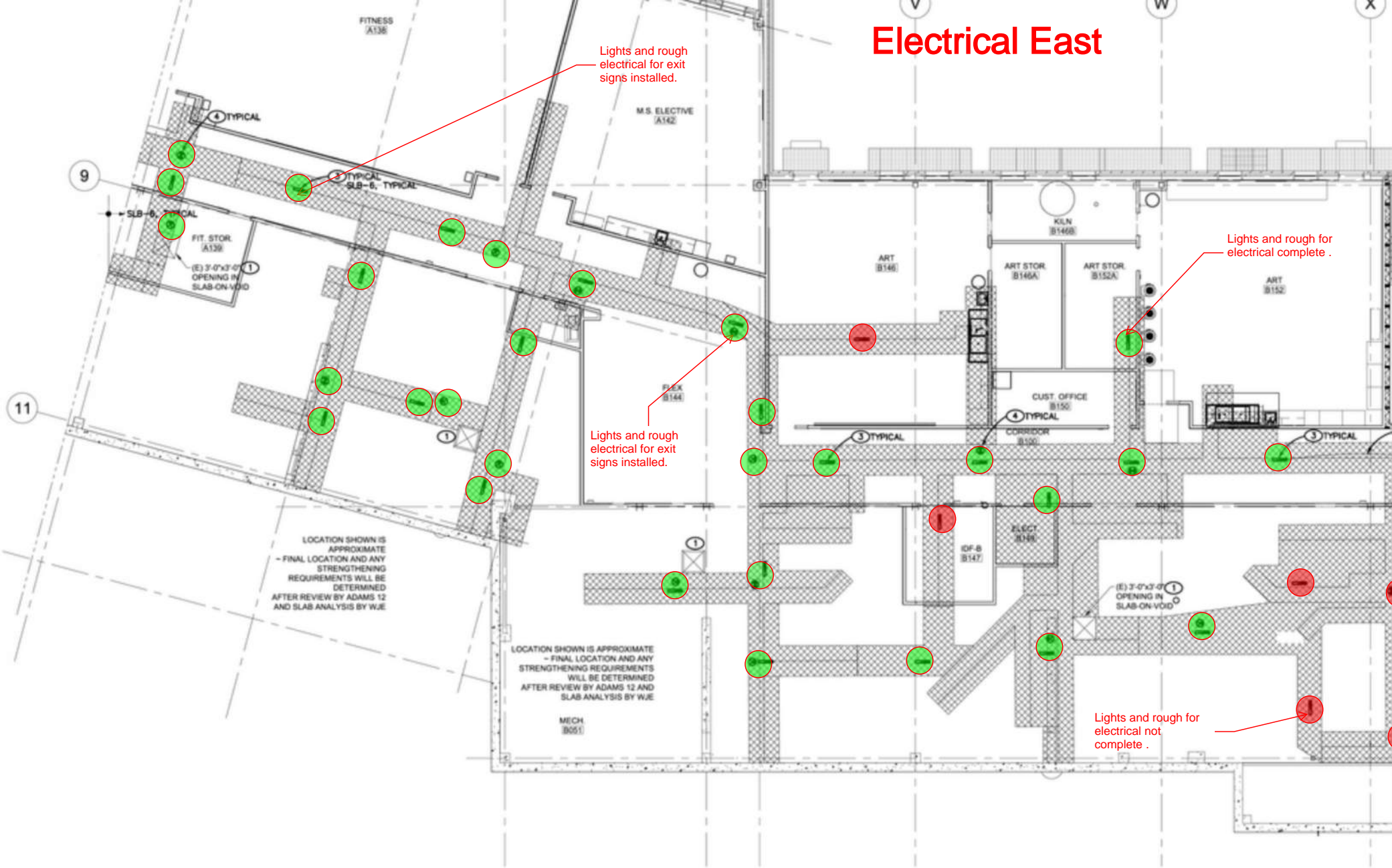
Rough Excavation not complete.

Removed from scope

Excavation done for drain.



Electrical East



Plumbing East

Damaged Plumbing
and hangers not
complete

Damaged Plumbing
and hangers not
complete

