

**COFFEE WITH  
THE  
PRINCIPAL  
CAFÉ CON EL  
DIRECTOR**

**DOLLAHAN ELEMENTARY SCHOOL  
21 DE NOVIEMBRE, 2025  
NOVEMBER 21, 2025 8:30 AM**





**Focus:**

*Safety*

*PBIS/Leader in Me  
School Wide Data -  
iReady, CAASPP*

*Parent square,  
December Events*

*Questions and Answers*

**Enfoque:**

*Seguridad*

*PBIS / Leader in Me*

*Datos Escolares a Nivel Escolar*

*iReady, CAASPP*

*ParentSquare*

*Eventos de Diciembre*

*Preguntas y Respuestas*



## **MISSION STATEMENT**

**The mission of Dollahan Elementary School, the lighthouse that illuminates a path to success, is to ensure each student is a confident and proactive leader, through a vital system distinguished by:**

- ✓ High expectations for student achievement**
- ✓ Rigorous and diverse learning experiences**
- ✓ A safe environment that fosters risk-taking and creative problem solving**
- ✓ Family and community partnerships**
- ✓ Uniqueness and diversity embraced by all**



## DECLARACIÓN DE MISIÓN

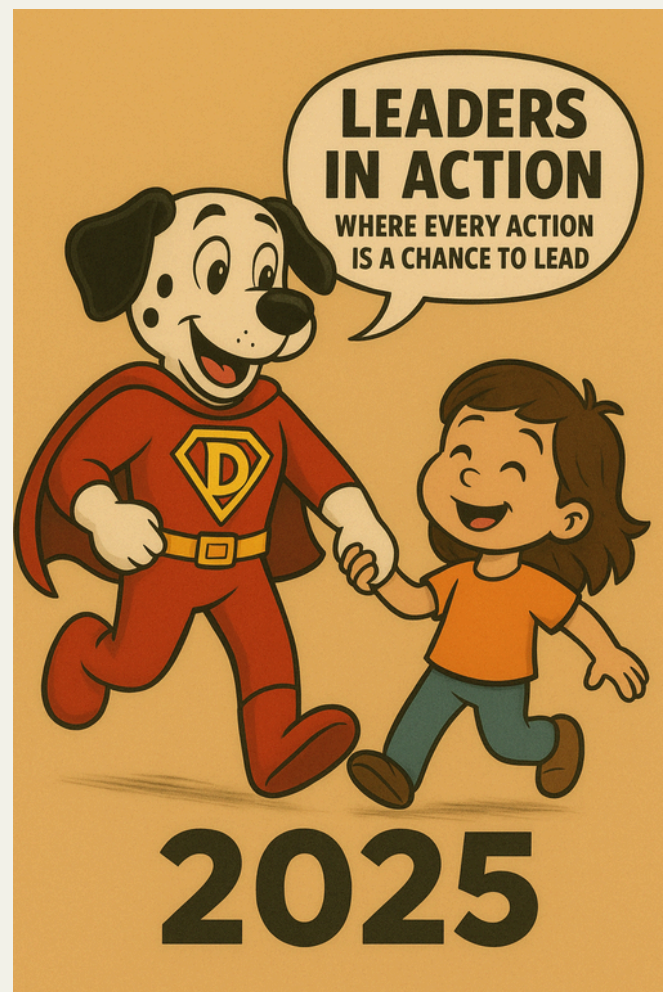
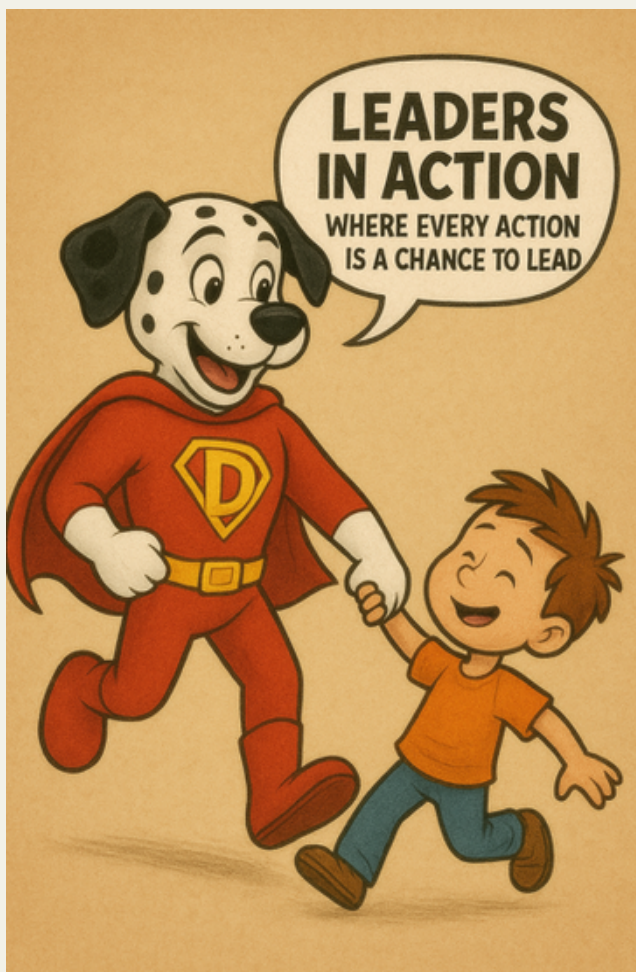
**La misión de la escuela primaria Dollahan, el faro que ilumina el camino hacia el éxito, es garantizar que cada estudiante sea un líder seguro y proactivo, a través de un sistema vital que se distingue**

**por:**

- ✓ Altas expectativas para el rendimiento estudiantil**
- ✓ Experiencias de aprendizaje rigurosas y diversas**
- ✓ Un entorno seguro que fomenta la toma de riesgos y la resolución creativa de problemas**
- ✓ Asociaciones familiares y comunitarias**
- ✓ Singularidad y diversidad aceptadas por todos**

DOLLAHAN'S

# THEME





## **DISTRICT SAFETY & SECURITY TEAM**

**CHIEF OF SAFETY & SECURITY: OFFICE GUSTAVO PAIZ  
LEADS DISTRICTWIDE SAFETY PROTOCOLS, EMERGENCY PROCEDURES,  
AND SECURITY OPERATIONS. ENSURES EVERY SCHOOL HAS THE  
TRAINING, SYSTEMS, AND SUPPORT NEEDED TO MAINTAIN A SAFE  
LEARNING ENVIRONMENT.**

**SAFETY INTERVENTION OFFICER II : DAVID CABRERA  
PROVIDES ON-SITE SAFETY SUPPORT, MONITORS CAMPUS SAFETY,  
ASSISTS DURING EMERGENCIES, AND COLLABORATES WITH STAFF TO  
REINFORCE PREVENTION AND SAFE PRACTICES.**

**TODAY'S FOCUS**

**SCHOOL SAFETY PROTOCOLS**

**EMERGENCY RESPONSE**

**DISTRICT SUPPORT FOR SCHOOL SITES**

**RESOURCES FOR STUDENTS, FAMILIES & STAFF**





**EQUIPO DE SEGURIDAD DEL DISTRITO  
JEFE DE SEGURIDAD Y PROTECCIÓN**

**LIDERA LOS PROTOCOLOS DE SEGURIDAD Y LOS PROCEDIMIENTOS DE EMERGENCIA A NIVEL DISTRITAL. ASEGURA QUE CADA ESCUELA CUENTE CON LA CAPACITACIÓN, LOS SISTEMAS Y EL APOYO NECESARIOS PARA UN ENTORNO SEGURO DE APRENDIZAJE.**

**OFICIAL DE INTERVENCIÓN DE SEGURIDAD II**

**BRINDA APOYO DE SEGURIDAD EN EL CAMPUS. SUPERVISA LA SEGURIDAD ESCOLAR. ASISTE EN EMERGENCIAS Y COLABORA CON EL PERSONAL PARA REFORZAR LA PREVENCIÓN Y LAS PRÁCTICAS SEGURAS.**

**ENFOQUE DE HOY**

- **PROTOCOLOS DE SEGURIDAD ESCOLAR**
- **RESPUESTA A EMERGENCIAS**
- **APOYO DEL DISTRITO A LAS ESCUELAS**
- **RECURSOS PARA ESTUDIANTES, FAMILIAS Y PERSONAL**



# LEADER IN ME with our Reading Specialist - Mrs. Anderson



Helen L. Dollahan Elementary School

I would like to... ▾

ENROLL NOW

REPORT BULLYING



[Calendar](#) [Our School](#) [Family](#) [Programs](#) [Staff](#) [Health Office](#) [Events & Highlights](#)

[Leadership](#) [iReady](#) [PBIS](#)

HOME > PROGRAMS > LEADERSHIP > LEADER IN ME

Leadership



[Leader in Me](#)

[The 7 Habits of Happy Kids](#)

[Our Leader in Me Journey](#)

iReady



PBIS



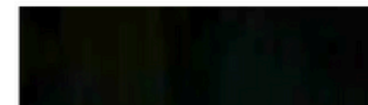
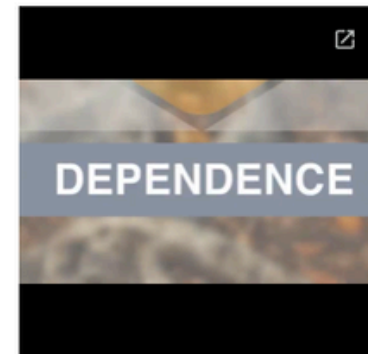
## Leader in Me

"Leadership is communicating people's worth and potential so clearly that they are inspired to see it in themselves."

~ Stephen R. Covey

### OUR LEADERSHIP FOCUS

The statement, Lead with Respect, Learn for a Lifetime, describes what our school has decided to focus upon in order to develop the whole child. We have embarked on a school-wide journey using The Seven Habits of Highly Effective People and The Leader in Me practices to help our students become ready to succeed in the 21st Century, with critical skills and characteristics such as a strong work ethic, motivation, problem-solving, goal setting, effective teamwork skills, academic achievement and valuing diversity in our society. By developing the whole child, we



English >



# VISIT OUR WEBSITE



Helen L. Dollahan Elementary School

I WOULD LIKE TO... ENROLL NOW REPORT BULLYING

Calendar Our School Family Programs Staff Health Office Events & Highlig

Principal's Message Our Mission Statement School Site Council (SSC) English Learner Advisory Council (ELAC)  
English Language Learners (EL) African American Advisory Council (AAPAC) Coffee With The Principal Parent Teacher Association (PTA)  
School Safety Page History

HOME > OURSCHOOL > COFFEE WITH THE PRINCIPAL > UPCOMING MEETINGS

Principal's Message

Our Mission Statement

School Site Council (SSC) +

English Learner Advisory Council (ELAC) +

English Language Learners (EL) +

African American Advisory Council (AAPAC) +

Coffee With The Principal -

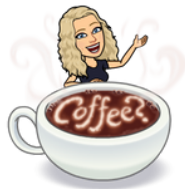
Coffee Meeting Slides

Upcoming Meetings

Parent Teacher Association (PTA) +

School Safety Page

History



## Upcoming Meetings

**Coffee with the Principal/  
Café con la directora**

DATES - FECHAS 2025-2026

SEPTEMBER 26, SEPTIEMBRE  
NOVEMBER 21, NOVIEMBRE  
FEBRUARY 27 FEBRERO  
APRIL 27 ABRIL  
MAY 22 MAYO  
@ 8:30 AM

ABOUT COFFEE WITH THE PRINCIPAL  
JOIN MRS. PUNCHUR, OUR PRINCIPAL, AT  
OUR MEETINGS EVERY MONTH. THESE  
MEETINGS WILL BE IN PERSON. THIS IS AN  
OPPORTUNITY TO DISCUSS ALL THINGS  
RELATED TO OUR SCHOOL.

ACERCA DE CAFE CON EL DIRECTOR  
ACOMPÁÑE A LA SRA. PUNCHUR, NUESTRA  
DIRECTORA, EN NUESTRAS REUNIONES TODOS LOS  
MESES. ESTAS REUNIONES SERÁN EN PERSONA.  
ESTA ES UNA OPORTUNIDAD PARA HABLAR SOBRE  
TODO LO RELACIONADO CON NUESTRA ESCUELA.



### **BENEFITS:**

- **LEARNING**
- **PLAYTIME WITH THE PRINCIPAL**
- **JOHNS INCREDIBLE PIZZA**
- **RAFFLE TO GO TO DISNEY**

# **if Absent**

- **COME TO SATURDAY SCHOOL**
- **INDEPENDANT STUDY**



# California School DASHBOARD

## 2023-2024

HELEN L. DOLLAHAN ELEMENTARY

## Academic Engagement

See information that shows how well schools are engaging students in their learning.

[LEARN MORE](#)

### Chronic Absenteeism

[All Students](#) [State](#)

Red

20.2% chronically absent

Increased 3.3% ⓘ

**EQUITY REPORT**  
Number of Student Groups in Each Level

4	1	1	0	0
Red	Orange	Yellow	Green	Blue

[View More Details](#) →

## 2024-2025

HELEN L. DOLLAHAN ELEMENTARY

## Academic Engagement

See information that shows how well schools are in their learning.

[LEARN MORE](#)

### Chronic Absenteeism

[All Students](#) [State](#)

Yellow

17.8% chronically absent

Declined 2.3% ⓘ

**EQUITY REPORT**  
Number of Student Groups in Each Color

1	4	1	0	0
Red	Orange	Yellow	Green	Blue

[View More Details](#) →

Lowest Performance



Highest Performance

# DOLLAHAN READING

Subject: Reading | School: Dollahan Elem

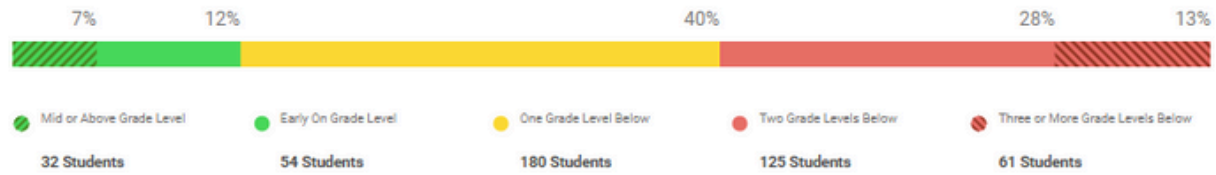
Academic Year: Current Year | Diagnostic: Most Recent | Prior Diagnostic: None

3-Level Placement | 
 Enhanced  
5-Level Placement | 
 Projected Proficiency

Criterion Referenced

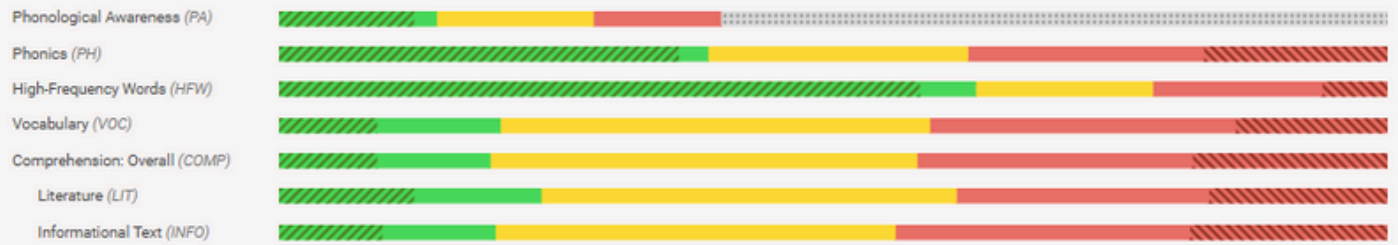
**Overall Placement**

Students Assessed/Total: 452/525



[The Mapping Between 5-Level and 3-Level Placements](#)

Placement by Domain



Not assessed (due to grade or domain exempted)

# DOLLAHAN

# READING

Placement Summary

Choose to Show Results By  
Grade

+ Add secondary demographic to show results by

Showing 6 of 6

Grade Overall Grade-Level Placement

						Students Assessed/Total
Grade K						1/69
Grade 1						86/89
Grade 2						93/93
Grade 3						85/85
Grade 4						97/99
Grade 5						90/90

# DOLLAHAN MATH

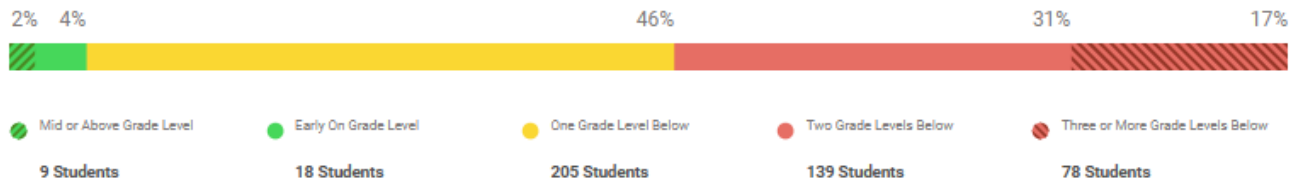
Subject: **Math** | School: **Dollahan Elem**

Academic Year: **Current Year** | Diagnostic: **Most Recent** | Prior Diagnostic: **None**

Criterion Referenced

## Overall Placement

Students Assessed/Total: **449/525**



[The Mapping Between 5-Level and 3-Level Placements](#)

### Placement by Domain



# DOLLAHAN

# MATH

Switch Table View

Placement Summary

Choose to Show Results By

Grade

+ Add secondary demographic to show results by

Showing 6 of 6

Grade

Overall Grade-Level Placement

● ● ● ● ●

Students Assessed/Total

Grade	Overall Grade-Level Placement	0%	33%	67%	0%	0%	Students Assessed/Total
Grade K		0%	33%	67%	0%	0%	3/69
Grade 1		2%	4%	68%	26%	0%	82/89
Grade 2		2%	3%	47%	47%	0%	93/93
Grade 3		0%	2%	40%	40%	18%	85/85
Grade 4		4%	5%	38%	27%	26%	96/99
Grade 5		1%	4%	37%	16%	42%	90/90

# How Community Schools Improve Outcomes

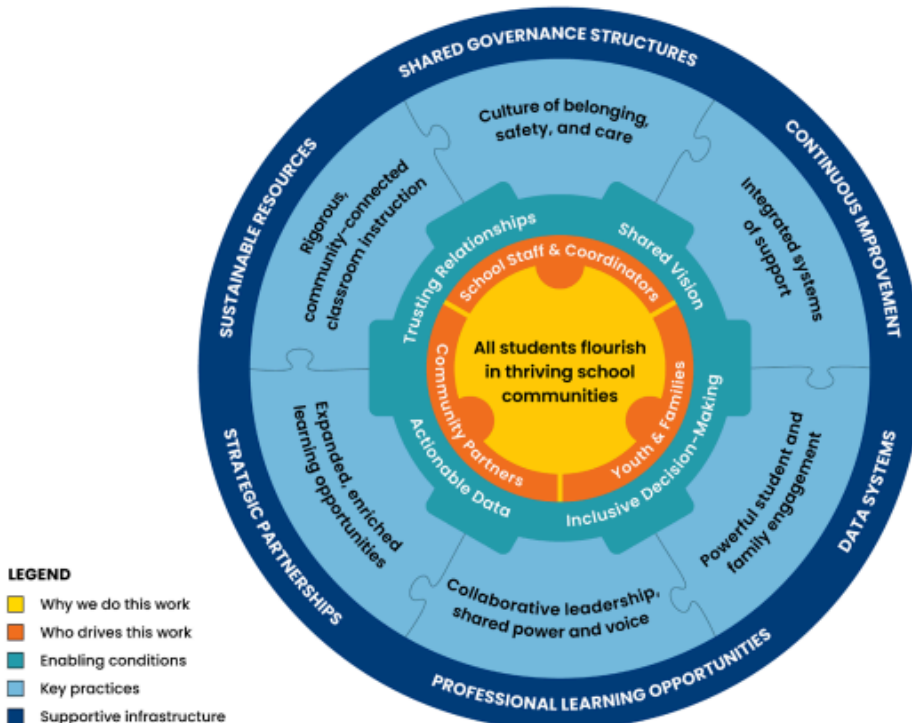
## FACT SHEET

### What is a community school?

Using the community schools strategy, public schools partner with families and community organizations to provide well-rounded educational opportunities and in- and out-of-school resources. Through this evidence-based approach, students, families, educators, and community partners come together to support student success. While the specific programs and services (e.g., mental health services, meals, health care) vary according to local context, there are six [key practices](#) that form the foundation, or pillars, of community schooling: (1) expanded, enriched learning opportunities; (2) rigorous, community-connected classroom instruction; (3) a culture of belonging, safety, and care; (4) integrated systems of support; (5) powerful student and family engagement; and (6) collaborative leadership and shared power and voice.

In recent years, the federal government and a growing number of states have increased investments in community schools. These include [state support](#) through school funding formula allocations, competitive grant programs, and technical assistance resources. In addition, the federal Full-Service Community Schools grant program was increased to \$150 million in fiscal year 2025 appropriations. This expanded financial support has been accompanied by a growing evidence base for community schools.

### Essentials for Community Schools Transformation



**RUSD won a \$39 million dollar community schools grant.**

**YAY!**





# ParentSquare

EA

#15 Dollahan Weekly News 2025

Elizabeth Alegre-Punchur • 4 days • Sunday, Nov 16 at 1:40 PM • • Dollahan Elementary



## Dollahan Weekly News

#14 November 17, 2025

NOVEMBER 16, 2025



Dear Dollahan Families,



# PTA<sup>®</sup>

*everychild. one voice.<sup>®</sup>*



## JOIN THE DALMATIANS PTA

Together, we make a difference for our kids.

**ONLY \$10 PER MEMBER!**



### WHY JOIN THE PTA?

- SUPPORT YOUR CHILD'S SCHOOL EXPERIENCE
- HELP FUND EVENTS, FIELD TRIPS, AND CLASSROOM NEEDS
- CONNECT WITH TEACHERS, STAFF, AND OTHER PARENTS
- HAVE A VOICE IN DECISIONS THAT SHAPE OUR SCHOOL



### MEMBERSHIP PERKS

- BE PART OF FUN FAMILY EVENTS
- STRENGTHEN LEARNING OPPORTUNITIES
- BUILD A STRONGER SCHOOL COMMUNITY

### HOW TO JOIN?

- BECOME A MEMBER BY USING THE QR CODE.
- BECOME A MEMBER BY RETURNING THE MEMBERSHIP ENVELOPMENT WITH CASH. ANYONE CAN BECOME A MEMBER (EACH PERSON COUNTS AS A MEMBERSHIP TOWARDS THE CONTEST. ONLY \$10 PER MEMBER!

**JOIN THE CONTEST! THE TOP FOUR CLASSES THAT GAIN THE MOST MEMBERSHIPS WILL WIN A DANCE PARTY AND SOME YUMMY TREATS! THE CONTEST WILL RUN FROM OCT 1ST-OCT 31ST**



# PTA<sup>®</sup>

*everychild. one voice.*<sup>®</sup>



## ÚNASE A LA PTA DE LOS DÁLMATAS

Juntos, hacemos la diferencia para nuestros niños.

**SÓLO \$10 POR MIEMBRO!**

### ¿POR QUÉ UNIRSE A LA PTA?

- APOYE LA EXPERIENCIA ESCOLAR DE SU HIJO
- AYUDE A FINANCIAR EVENTOS, EXCURSIONES Y NECESIDADES DEL AULA
- CONÉCTESE CON MAESTROS, PERSONAL Y OTROS PADRES
- TENGA VOZ EN LAS DECISIONES QUE DAN FORMA A NUESTRA ESCUELA

### BENEFICIOS DE LA MEMBRESÍA

- SEA PARTE DE EVENTOS FAMILIARES DIVERTIDOS
- FORTALEZCA LAS OPORTUNIDADES DE APRENDIZAJE
- CONSTRUYA UNA COMUNIDAD ESCOLAR MÁS FUERTE

### ¿CÓMO UNIRSE?

- HAZTE MIEMBRO UTILIZANDO EL CÓDIGO QR. HAZTE SOCIO DEVOLVIENDO EL SOBRE DE MEMBRESÍA CON DINERO EN EFECTIVO. CUALQUIERA PUEDE HACERSE SOCIO (CADA PERSONA CUENTA COMO SOCIO PARA EL CONCURSO). SÓLO \$10 POR SOCIO!



ÚNETE AL CONCURSO! LAS CUATRO CLASES CON MÁS MEMBRESÍAS GANARÁN UNA FIESTA DE BAILE Y DELICIOSOS BOCADILLOS. EL CONCURSO SE REALIZARÁ DEL 1 AL 31 DE OCTUBRE.



DOLLAHAN ELEMENTARY  
SCHOOL WEBSITE & CALENDAR

Rialto USD DISTRICT WEBSITE



# Questions & Answers

**RAISE YOUR  
HAND**



**ESCRIBAN ?S  
EN EL CHAT O  
LEVANTE LA  
MANO**



**PREGUNTAS Y RESPUESTAS**

