

April 26, 2026

# Cockrell Connection

Be sure to follow us on facebook and instagram



### SCHOOL HOURS

Grades PK-4.....7:55-3:15 PM  
 Front Doors Open.....7:15 AM  
 Breakfast Served.....7:15-7:50 AM  
 Students Enter Class.....7:45 AM  
 Class Begins.....7:55 AM

\*Students must be inside the building by 7:55 AM. Students entering the building after this time will be tardy. If a student is tardy, parents are required to park and come in the lobby to sign them in.

### IMPORTANT LINKS:

[Cockrell Elementary Contact List](#)

[APRIL MENU](#)

[DISTRICT CALENDAR](#)

[DRESS CODE](#)

[STAFF AFFIRMATIONS](#)

[SCHOOL SUPPLY LISTS](#)

[ABSENCE REPORTING](#)

[CAMPUS PFE POLICY](#)

[DISTRICT PFE POLICY](#)

## Library Books

all library books must be turned in by May 5th.



## Closed Campus

April 28<sup>th</sup> -May 1<sup>st</sup>

Last Day for Lunch Visitors

May 8th

## Math STAAR

Tuesday April 28<sup>th</sup>

3<sup>rd</sup> & 4<sup>th</sup> Grade



## Upcoming Dates:

- 04/28-5/1 MATH STAAR - CLOSED CAMPUS
- 05/4-8 TEACHER /SUBSTITUTE APPRECIATION WEEK
- 05/04 4<sup>TH</sup> GRADE FIELD TRIP
- 05/06 SCHOOL NURSE DAY
- 05/08 LAST DAY FOR LUNCH VISITORS
- 05/11-15 BOOK FAIR (FLYER BELOW)
- 05/14 PTO GENERAL ASSEMBLY MEETING
- 05/18 SENIOR WALK 2PM
- 05/18 NATIONAL SPEECH PATHOLOGIST DAY
- 05/19 PRE-K - 3<sup>RD</sup> GRADE AWARDS
- 05/20 4<sup>TH</sup> GRADE AWARDS
- 05/21 EARLY RELEASE

## Awards Schedule

See flyer below for details

26-27 SCHOOL SUPPLIES  
FLYER BELOW



# COCKRELL



## Awards

 **TUESDAY MAY 19, 2026**

**1ST GRADE**

**9:30-10:00**

**PEARS**

**10:10-10:40**

**PRE-K**

**11:00-11:30**

**3RD GRADE**

**11:45-12:15**

**KINDER**

**12:10-12:40**

**2<sup>ND</sup> GRADE**

**1:15-1:45**



**WEDNESDAY MAY 20, 2026**

**4<sup>TH</sup> GRADE**

**8:30AM**

DUE TO CAPACITY LIMITATIONS WE ASK THAT YOU LIMIT VISITORS TO 2 PER STUDENT. NO STROLLERS OR SIBLINGS. THERE WILL BE NO LUNCH VISITORS ON THIS DAY.

**CLICK HERE FOR FAST PASS**





# COCKRELL BOOK FAIR

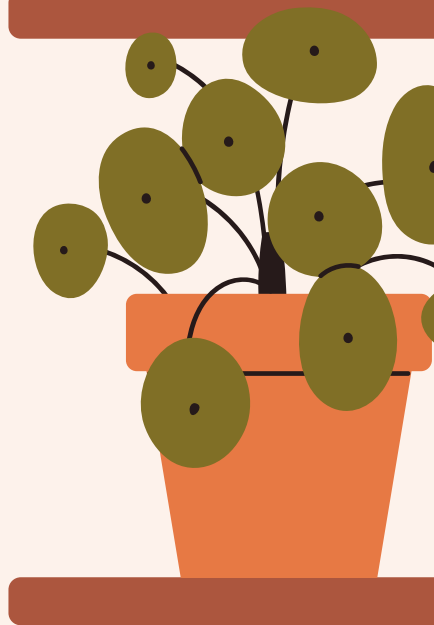
## MAY 11-15

### MAY 11-13, 8-3

### MAY 14, 8-4:45

### 3:45- PTO MEETING

### MAY 15, 8-10AM



We accept cash, credit cards, eWallets, and checks made payable to Cockrell. Please remember money to cover the tax.

PTO WILL BE GIFTING EACH STUDENT \$10 TO SPEND AT THE FAIR. THIS MONEY CAN BE COMBINED WITH THEIR OWN AS WELL. MONEY MUST BE SPENT DURING THEIR CLASSES SHOPPING TIME THAT WEEK.





# COCKRELL CARES



Three Little Pitties Rescue

# FOOD DRIVE AND SUPPLY

for Foster Pets

April 20- April 27

What we can accept:



## Dog foods

Wag

Purina

Rachel Ray

Iams

Costco Kirklands

HEB Heritage Ranch



## Cat foods

Purina

Wilderness

Iams

Nutro

Costco Kirklands

HEB Heritage Ranch

\*\* Chicken or Beef only



Drop off at the reception desk



Sheet, blanket & towel donations welcomed!

Check out our Amazon Wish List for current needs,  
or send directly to us if easier!

@ThreeLittlePittiesRescue

# DID YOU FORGET TO ORDER THE YEARBOOK?



**YOU PAY**

**\$35 +**

**SHIPPING**

**QUESTIONS?**

**YEARBOOK@COCKRELLPTO.ORG**

## DON'T WORRY WE'VE GOT YOU!

### HERE'S THE DETAILS:

- if you order between now and May 8th, your yearbook will be shipped to the school
- if ordered after May 8th, it will be shipped to your home address
- estimated delivery is 1 to 2 weeks

**QUESTIONS?**

**YEARBOOK@COCKRELLPTO.ORG**

## HOW DO I ORDER?

### CREATE A TREERING ACCOUNT

- Treering is our new Yearbook Publisher
- Scan the QR code
- OR sign up through the app



**SCHOOL CODE:**  
1017180435771454

## PRE-K & KINDERGARTEN

### WHAT DOES MY CHILD NEED TO KNOW TO BE SUCCESSFUL IN SCHOOL

#### INDEPENDENCE SKILLS

- Use the restroom independently (including washing hands)
- Unbutton and button pants alone
- Open food containers and packages
- Put on and take off backpack, shoes, and jacket
- Pack up the backpack

#### SOCIAL SKILLS

- Follow simple directions
- Take turns and share with others
- Use words to express needs and feelings

#### FINE MOTOR SKILLS

- Hold a pencil, crayon, or marker correctly
- Cut with scissors
- Use glue sticks and build with small objects (Legos, puzzles, etc.)

#### LANGUAGE & LITERACY

- Recognize their name and attempt to write it
- **Recognize their name when someone says it and say their own name when asked**
- Identify some letters and their sounds
- Listen to and talk about stories

#### MATH READINESS

- Count to 10 and recognize some numbers
- Identify basic shapes and colors
- Sort and match objects by size, shape, or color

### LUNCH & SNACKS

Practice opening food containers and eating independently. School lunch is available, or you may send a packed lunch. **Students will eat in the cafeteria with a large group of other students and should practice sitting for 30 minutes while eating.**

#### WHAT TO BRING ON THE FIRST DAY

- Backpack (regular size, no wheels)
- Extra set of clothes (labeled in a ziplock bag)
- Refillable water bottle
- Nap mat (for Pre-K)

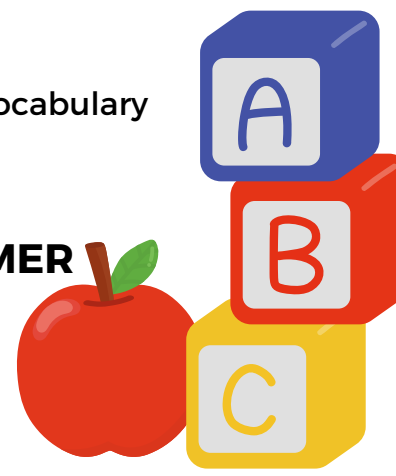
### SCHOOL ROUTINE

Help your child get used to a daily schedule with consistent bedtimes and wake-up times.

### READ EVERYDAY

Reading with your child daily builds vocabulary and a love of learning.

**PLEASE PRACTICE THESE SKILLS OVER THE SUMMER SO THAT YOUR CHILD IS READY FOR SCHOOL!**



**PK & KINDER**  
2026-27  
**ENROLLMENT**  
**OPENS MARCH 30TH!**

**JOIN OUR *Family!***  
**PEARLAND ISD**

**BUILD PEARLAND Proud.**

**Pearland ISD Job Fair!**

Join us on **Saturday, April 25, from 8:30-10:30 a.m. at Pearland High School - Searcy side** (located at 3775 South Main St) and learn about positions available at Pearland ISD.

Applicants will have the opportunity to talk to the hiring campuses and departments, fill out applications online (laptops will be available) and have onsite interviews.

Child care will be available for applicants with children (5-12 years old).

**Positions Available:**

- Teachers and classroom aides (at all campuses)
- Special Programs department
- Multilingual Programs
- Career and Technical Education
- Advanced Academics

**Join Our Team:**  
Learn more about positions currently available\* at:  
[www.pearlandisd.org/employment](http://www.pearlandisd.org/employment)

\*Positions available might change daily.

# Are you moving over the summer?

Please contact our Registrar  
Lisa Nazario so that we can  
update your records





Save Time &amp; Money on School Supply Shopping

Exact pack items &amp; brands customized to your school lists.

# BARBARA COCKRELL ELEMENTARY

*Save Over 40% on Supplies Compared to Other Online Retailers*

Grade Level 2026-2027	Cost
Pre-K	\$61
K	\$61
1st	\$61
2nd	\$61
3rd	\$61
4th	\$61

**Order Securely Online  
Until May 19th**[www.educationalproducts.com/shoppacks](http://www.educationalproducts.com/shoppacks)

Enter the school ID

**COC005**

(3 letters /3 numbers)

Packs will be in your child's classroom  
the first day of school.

Sales tax will be applied at checkout

For questions, please contact:

Samantha Vela- [secretary@cockrellpto.org](mailto:secretary@cockrellpto.org)

832-736-6600;

Cristen Kirksey- [president@cockrellpto.org](mailto:president@cockrellpto.org)

832-736-6600

**Scan QR code  
and  
Order Today!**