



# South Whidbey School District 2026 Session Priorities

The South Whidbey School District serves the communities located on the south end of Whidbey Island in Washington State. The district is 60 square miles in size and serves approximately 1,117 FTE students on three campuses.

## WE NEED TO.....



1. Increase Materials, Supplies, and Operating Costs (MSOC) funding to reflect actual operating costs



2. Exempt essential services, IT, and professional learning from sales tax



3. Pause new unfunded mandates and improve flexibility in existing requirements, including fully funding Transitional Kindergarten

## SO THAT.....

move closer to fully funding basic education and avoid shifting costs to school districts

## IN ORDER TO.....

districts can invest in student learning and support better outcomes for all students.



4 schools



1283 Students



12 CTE & 4 AP Classes



96.2% Graduation Rate

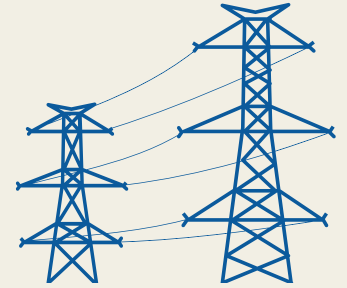
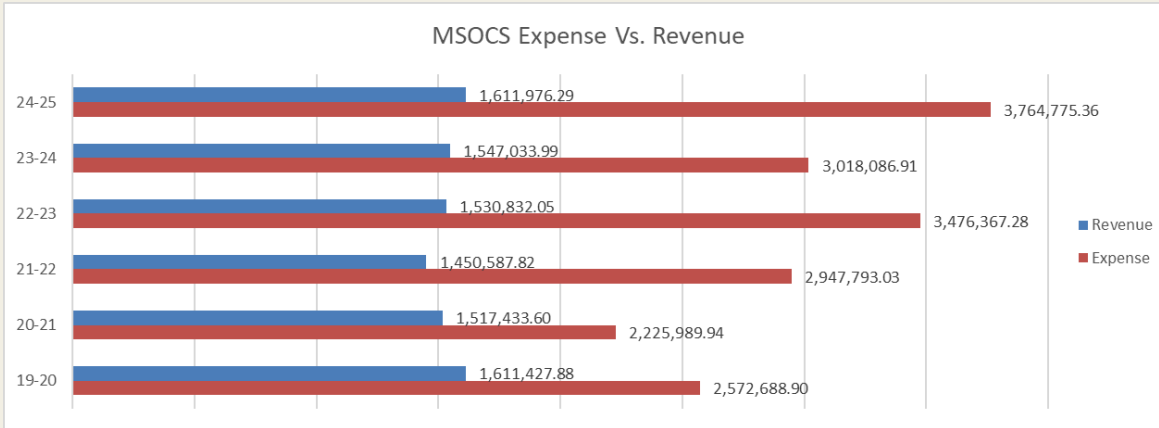


179 Staff Members



33.5% Low-Income

# PLEASE FUND MATERIALS, SUPPLIES, AND OPERATING COSTS (MSOCS)!

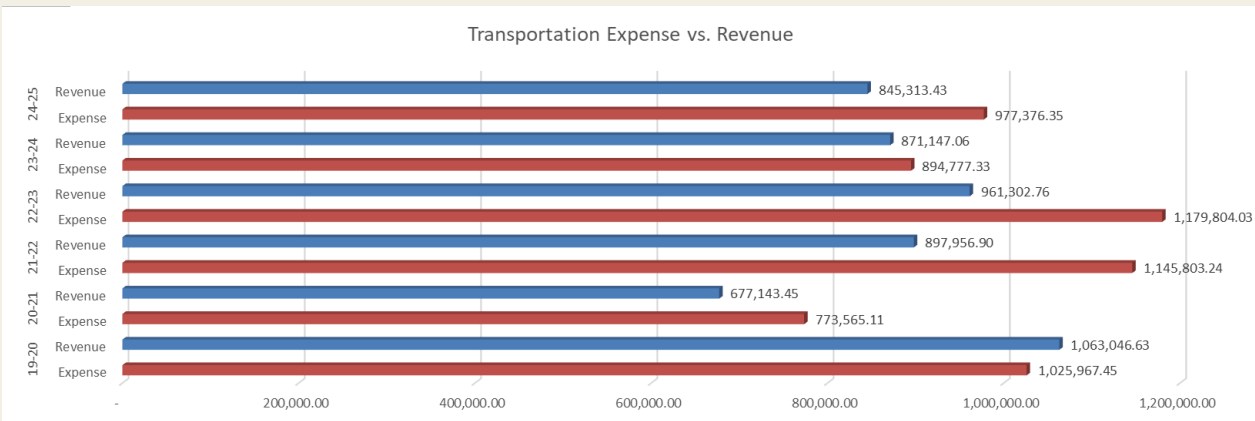
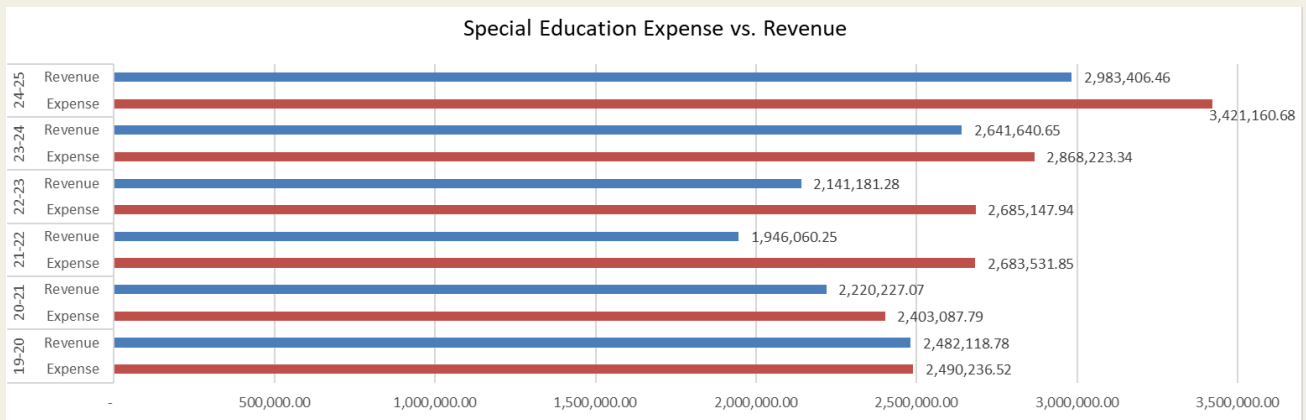
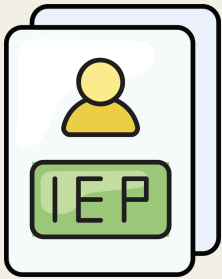


### Example:

Electricity (19/20 \$ 285,067.29 → 24/25 \$ 513,536.94)

Insurance ( 19/20 \$118,408.00 → 24/25 \$437,395.00 )

# PLEASE PAUSE NEW REQUIREMENTS & ADDRESS UNFUNDED MANDATES!



South Whidbey School District  
 5476 Maxwellton Road  
 Langley, WA 98260  
[www.sw.wednet.edu](http://www.sw.wednet.edu)

Dr. Rebecca Clifford  
 Superintendent  
 360-221-6100  
[bclifford@sw.wednet.edu](mailto:bclifford@sw.wednet.edu)

# ***PLEASE FUND MATERIALS, SUPPLIES, AND OPERATING COSTS (MSOCS)!***

**These include but are not limited to:**

- **Electricity (19/20 \$ 285,067.29 → 24/25 \$ 513,536.94)**
- **Insurance ( 19/20 \$118,408.00 → 24/25 \$437,395.00 )**
- **Water**
- **Fuel/Oil**
- **Food Services**
- **Books**
- **Technology**
- **All supplies (janitorial, kitchen, maintenance, office, school)**
- **Internet**
- **Photocopier and copies**
- **Office Services**
- **Election Fees**
- **Employee Training/Professional Development**
- **Data Processing**
- **State Audit Fees**
- **Legal Fees**
- **Repairs**
- **Equipment Rentals**
- **Contractor Services**
- **AND MUCH MUCH MORE!**