



ALEDO
GROWTH
COMMITTEE



**ALEDO
GROWTH
COMMITTEE**



Purpose

The purpose of the Aledo Growth Committee is to represent the Aledo ISD community by:

- actively seeking and incorporating community input in order to shape the vision and priorities for future high school facilities,
- analyzing data on enrollment, finances, and instructional needs to inform recommendations, and
- refining existing long-range facility plans to propose conceptual designs for high school spaces that align with community values and future growth.

Charge

The Aledo Growth Committee is charged by the Board of Trustees to:

- represent the priorities, expectations and values of the entire community,
- consider the needs of all of the district's students,
- use facts and data to make informed decisions,
- update the long-range facility master plan focused on addressing the district's high school capacity needs for future growth, and
- lead the development of conceptual designs for future high school facilities, incorporating community input and vision.

2022-2023 AGC: Addressing High School Needs

Made significant progress in understanding

- high school needs
- high school space options
- high school pricing

Reviewed and discussed 5 initial options that grew to 10 options and narrowed down to the most likely feasible options for high school space: High School #2, College & Career Academy

2022-2023 AGC: Addressing High School Needs

Chose to include in the bond:

- The Steve Wood Complex addition and renovations to AHS/DNG; that work is completed
- Funding so that AISD could purchase land for High School #2 and the College & Career Academy; that work is completed

Determined that high school space would need to be addressed in a future bond, and that funding availability would be a significant factor in determining the best next step for high school space

2023 BOND



Aledo Independent School District



Elementary School #7

\$59,800,00



High School Addition/Repurpose

\$20,200,00



AHS/DNG Furniture

\$5,000,000



Transportation

\$4,500,000



Land (to include tracts for additional high school facilities)

\$17,800,000



Safety & Security

\$5,000,000



Technology

\$6,500,000



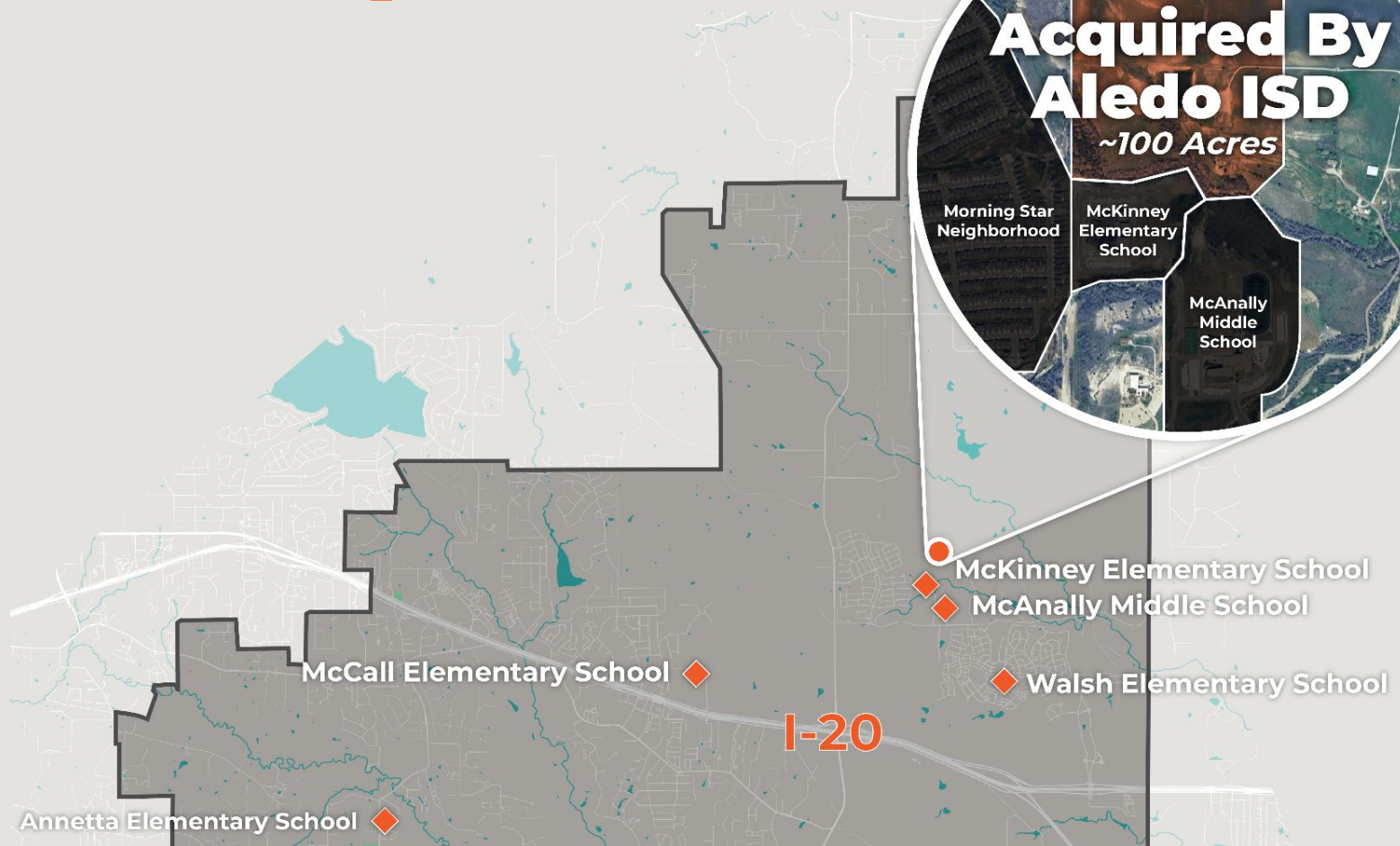
Facility Maintenance

\$5,000,000

TOTAL BOND PACKAGE:

\$123,800,000

Land Acquisitions





McKinney Elementary School

McAnally Middle School

McCall Elementary School

Walsh Elementary School

I-20

Coder Elementary School

Aledo High School

Aledo Early Childhood Academy

Aledo Middle School

Vandagriff Elementary School

Stuard Elementary School

Site Acquired By Aledo ISD

Aledo High School
Daniel Ninth Grade

~20 Acres

Champion Dr

Bailey Ranch Rd

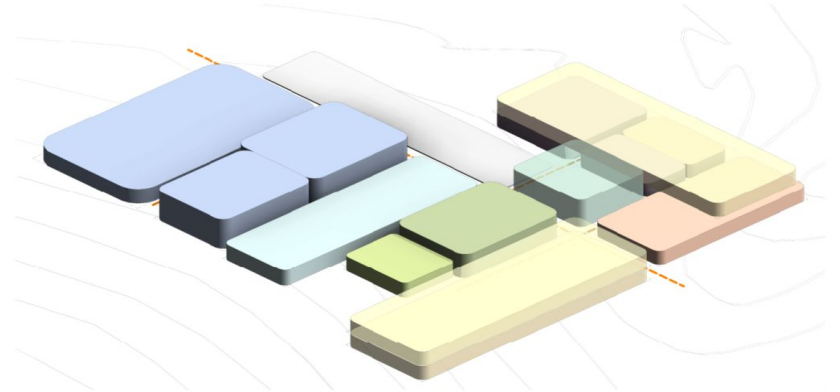
Planned 2025 AGC end product:

2 conceptual designs:

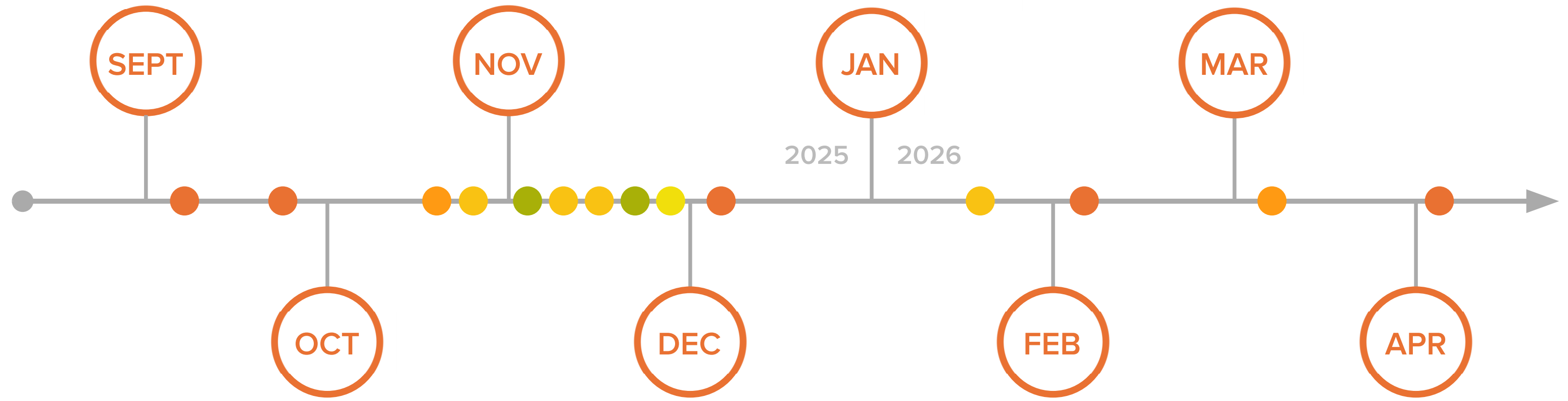
- College & Career Academy
- High School #2

For each space, the district will have:

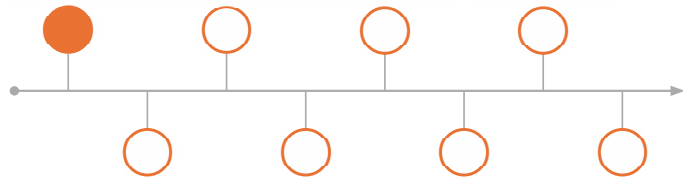
- Program of spaces
- Educational design specifications
- Conceptual floor plans & massing models
- Site analysis



- ALEDO GROWTH COMMITTEE MEETINGS ●
- ALEDO GROWTH COMMITTEE COMMUNITY MEETINGS ●
- ALEDO ISD LEADERSHIP MEETINGS ●
- AHS STAFF & STUDENT MEETINGS ●
- FACILITY TOURS ●



SEPTEMBER 2025



MEETING OBJECTIVES:

Aledo Growth Committee Meeting #1

Introduction:

- Conceptual Design is....
- Conceptual Design is not...
- Conceptual Deliverable Goals

Aledo Growth Committee Meeting #2

Visioning:

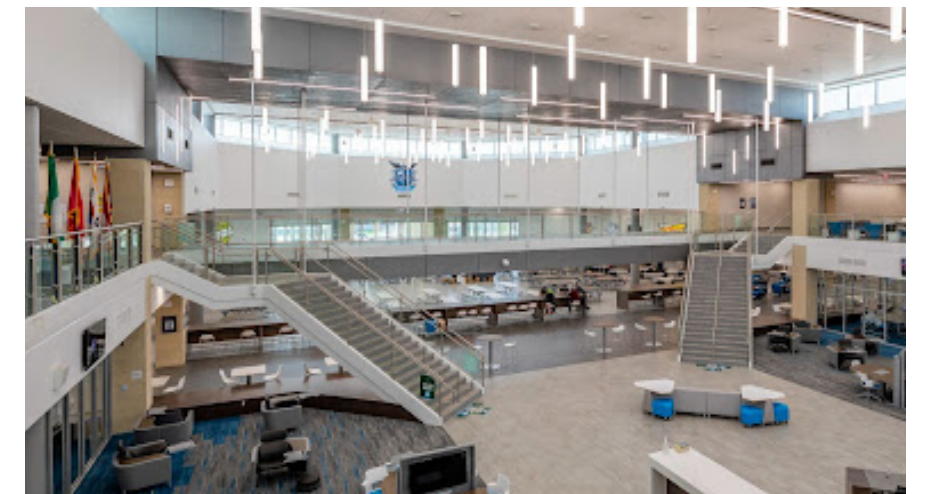
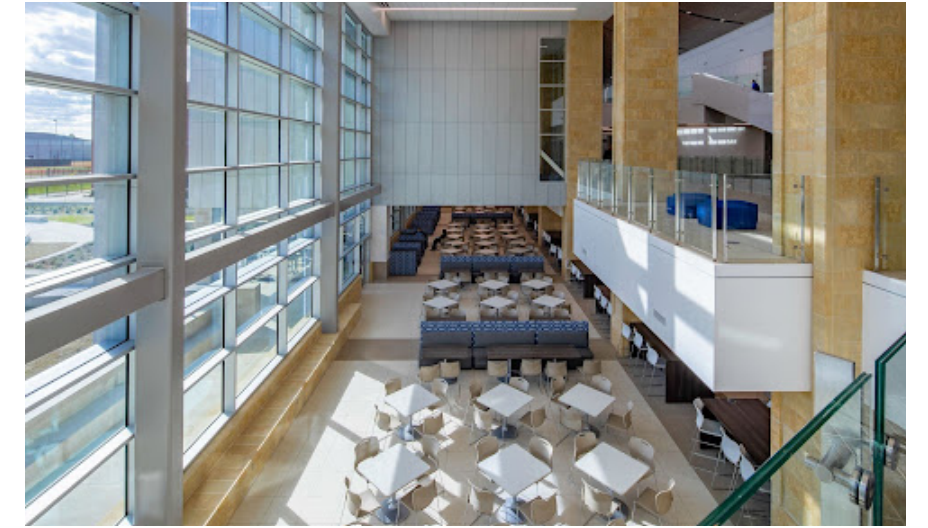
- How will teaching & learning look different in the future?
- What learning environments (spaces & facilities) will best support this future?

21st Century Building Trends:

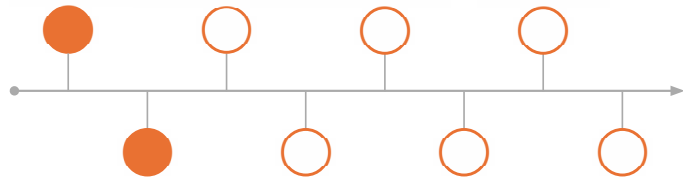
- Flexibility, variety of learning spaces, common spaces, CTE, visibility, branding, natural light, outdoor connection, dynamic exteriors



experiential learning
INTERNSHIPS technology
FLEXIBILITY
CAREER PREP corporate partnerships
EXPLORATION
PERSONALIZED PATHWAYS



OCTOBER 2025



MEETING OBJECTIVES:

**Aledo Growth Committee
Community Meeting #1**

Introduction:

- Conceptual Design is....
- Conceptual Design is not...
- Conceptual Deliverable Goals

Aledo ISD Leadership Meeting #1

Introduction:

- Conceptual Design is....
- Conceptual Design is not...
- Conceptual Deliverable Goals

Visioning:

- Levels of Flexibility
- 21st Century Building Trends
- What types of spaces will be required to be successful? Is it an owned space or a flexible space?
- Keep-Toss-Create Exercise

AISD LEADERSHIP



KEEP

- REPRESENTING ALL KIDS
- COLLABORATIVE ENVIRONMENTS
- FLEXIBILITY
- CENTRAL "HUB"
- PRIDE
- LECTURE HALL
- EQUITABILITY



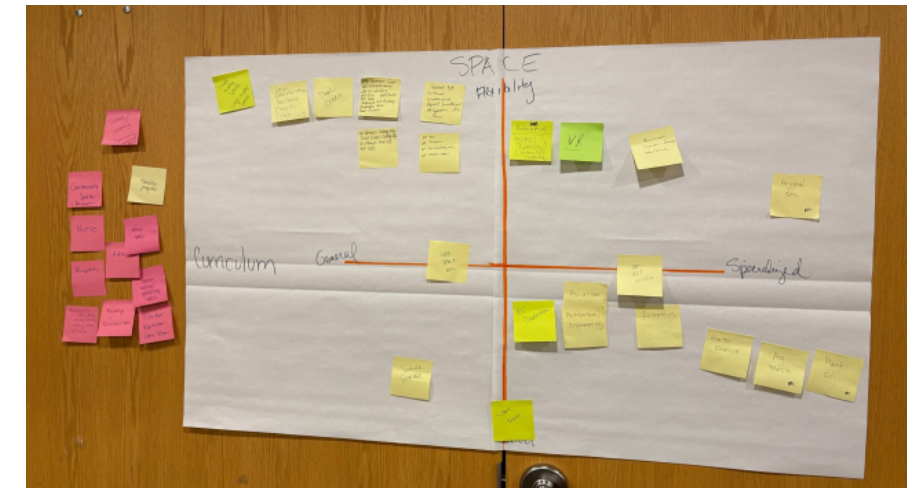
TOSS

- TRADITIONAL INSTRUCTION
- LEARNING STAIRS
- HIGH CEILINGS WHERE NOT NEEDED
- ROOMS WITHOUT WINDOWS
- ENCLOSED LIBRARY
- NARROW HALLWAYS
- LACK OF OUTDOOR SPACE

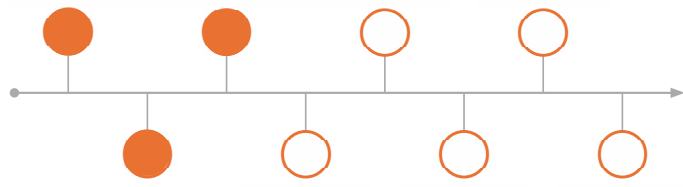


CREATE

- SPACE FOR HIGHER ED PARTNERS
- RECORDING STUDIO
- DIFFERENT LEARNING ENVIRONMENTS
- COMMUNITY CONNECTIONS
- MORE CLASSROOM SPACE
- FLEXIBLE STUDY SPACES
- SPACE FOR GROWTH



NOVEMBER 2025



MEETING OBJECTIVES:

Aledo ISD Leadership Meeting #2

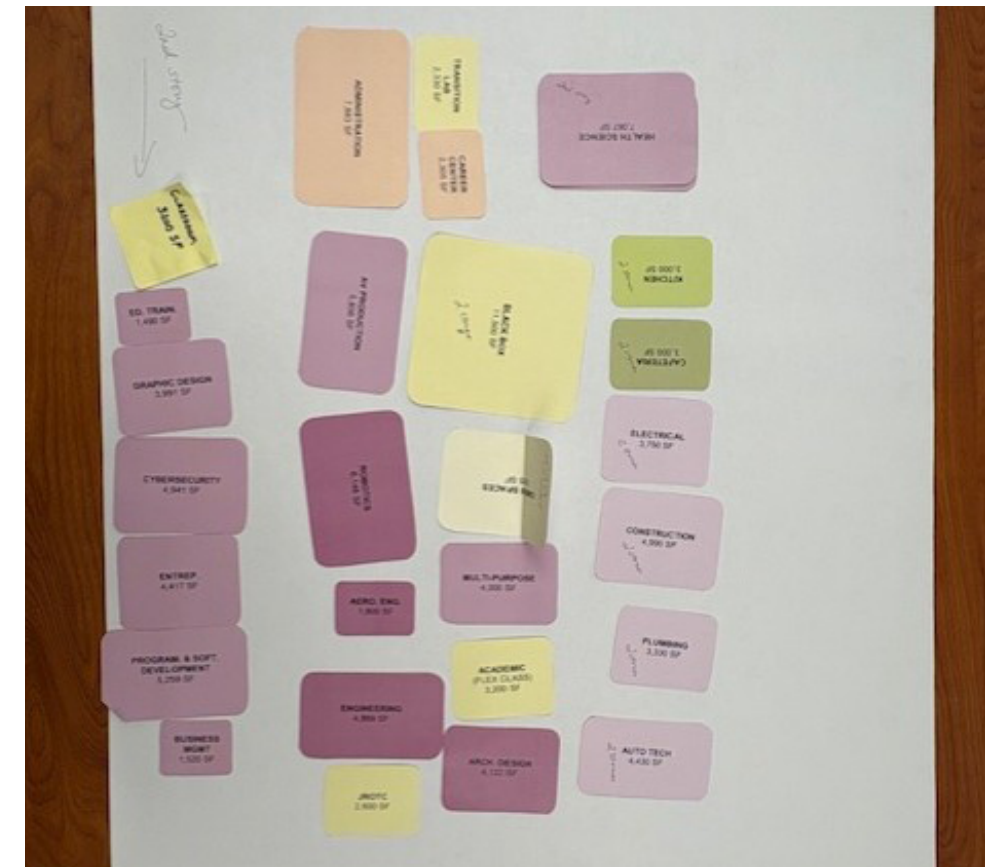
Visioning/Planning:

- Red Dot/Green Dot to McAnally MS
- Program Comparison

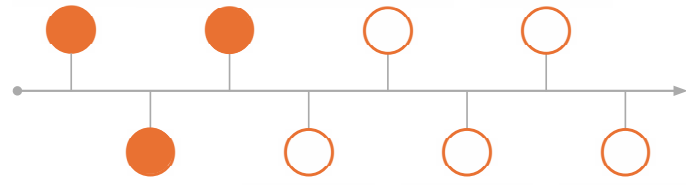
Aledo ISD Leadership Meeting #3

Planning:

- Adjacency Diagramming



NOVEMBER 2025



MEETING OBJECTIVES:

Aledo High School Student Meeting

Visioning:

- Keep-Toss-Create Exercise

Aledo High School Staff Meeting

Visioning:

- Keep-Toss-Create Exercise



STUDENTS



- OUTDOOR SEATING
- EATING IN LIBRARY/COMMON LEARNING SPACE
- NATURAL LIGHT
- OPEN AREAS/LESS WALLS
- PODS FOR STUDYING
- COLLABORATION AREAS
- FURNITURE SPECIFIC TO PROGRAMS

KEEP



- NARROW HALLWAYS
- BORING WALLS
- LACK OF COLLABORATION SPACES
- NOT ENOUGH LIGHT
- SMALL RESTROOMS
- LACK OF STORAGE
- MODERN LOOK

TOSS



CREATE

- NATURAL LIGHT
- OPEN SPACES
- BIGGER LAB SPACES
- MORE CTE PROGRAMS
- OUTDOOR COURTYARD
- COMMON AREAS
- COLLABORATION AREAS

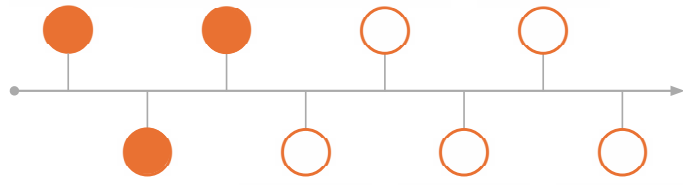
STAFF

- LECTURE HALL
- NATURAL LIGHT
- GLASS AT LIBRARY FOR VISIBILITY
- OUTDOOR SPACE FOR LUNCH
- VARIETY OF STUDY AREAS
- STORAGE ADJACENT TO CTE PROGRAMS
- LABS WITH BUILT IN CLASSROOM SPACE

- ROOMS WITHOUT WINDOWS
- SMALL CLASSROOMS
- NARROW HALLWAYS
- SHARED FACULTY RESTROOMS
- WASTED SPACE
- POOR VISIBILITY
- AUDITORIUM ACCESS

- LIBRARY/COMMON LEARNING SPACE IN CENTER OF SCHOOL
- MORE WORKROOMS
- MORE STORAGE
- OUTDOOR WORKING/LEARNING AREA
- MORE CTE PROGRAMS
- MORE GYMS
- BETTER AUDITORIUM SEATING

NOVEMBER 2025



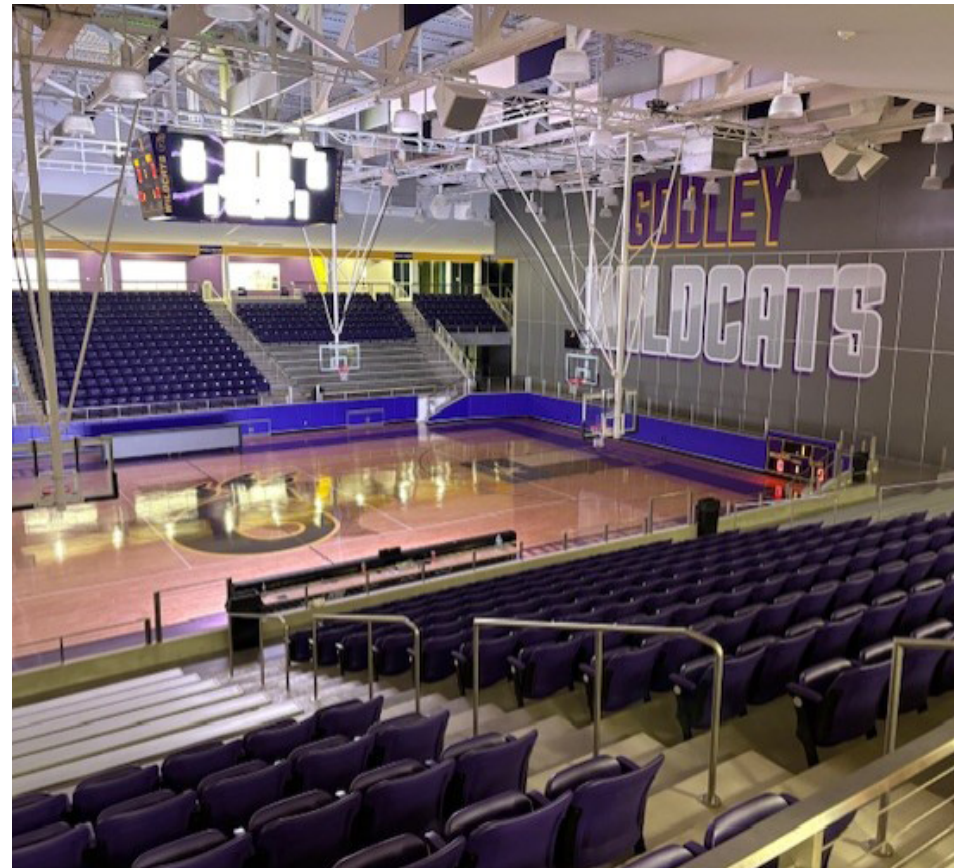
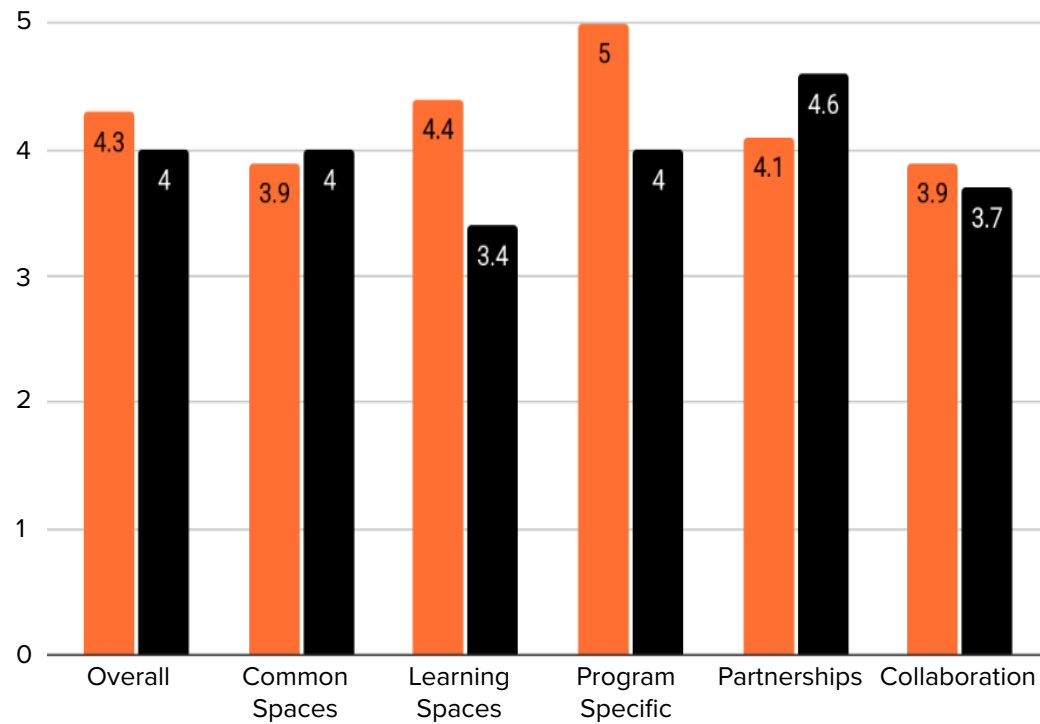
MEETING OBJECTIVES:

Aledo Growth Committee Facility Tours

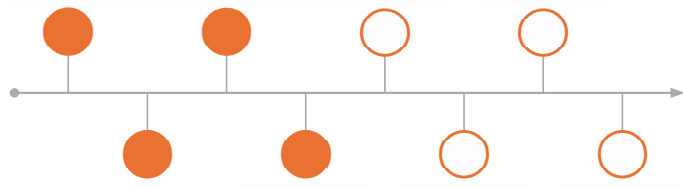
- Dr. Gene Burton College & Career Academy
Rockwall ISD
- The Keith Bell Opportunity Central
Forney ISD
- Godley High School
Godley ISD



Rockwall Forney



DECEMBER 2025



MEETING OBJECTIVES:

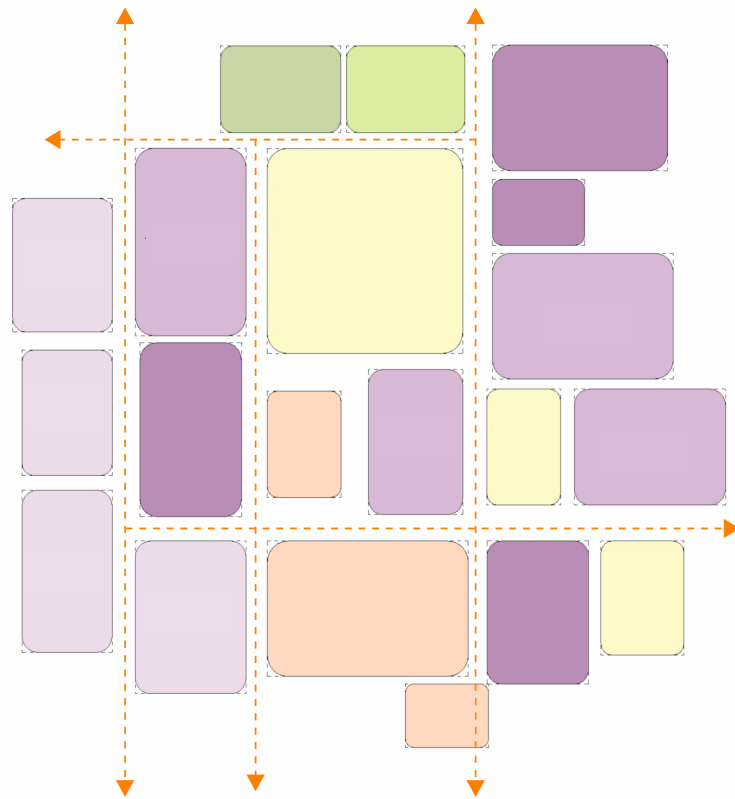
Aledo Growth Committee Meeting #3

Visioning/Planning:

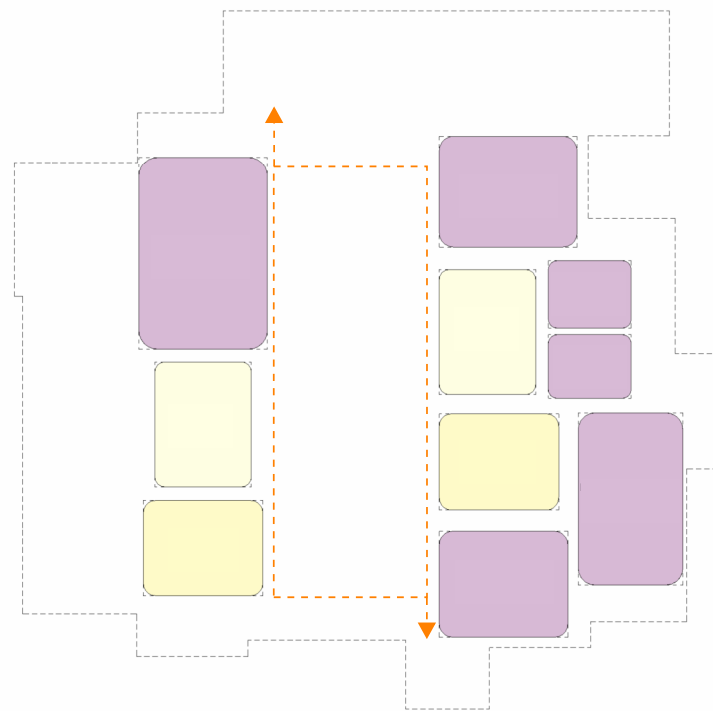
- Red Dot/Green Dot to McAnally MS

Planning:

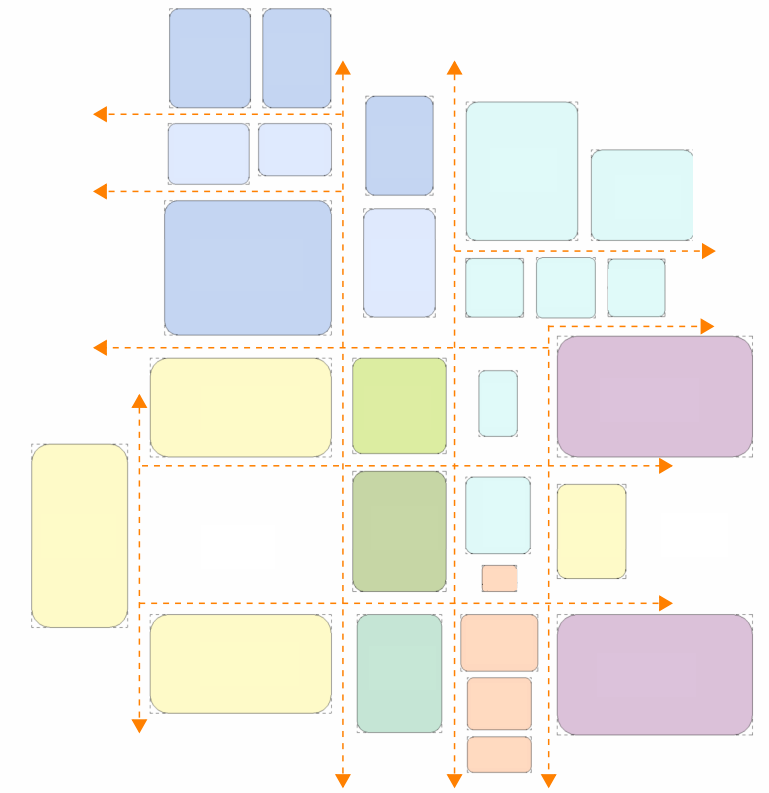
- Adjacency Diagram Review



College & Career Academy First Floor

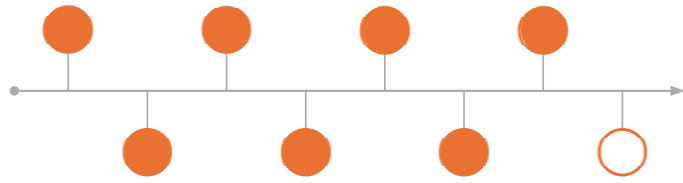


College & Career Academy Second Floor



High School #2 First Floor

JAN, FEB, & MAR 2026

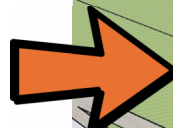
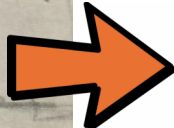
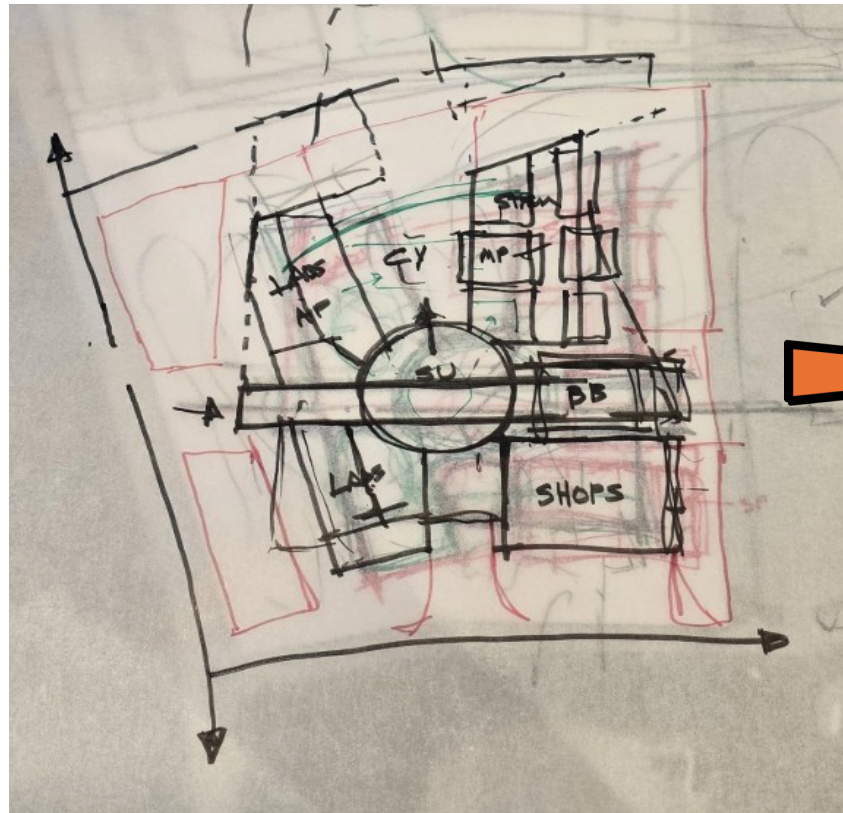


MEETING OBJECTIVES (CCA):

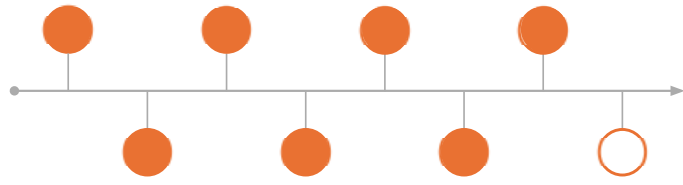
- Aledo ISD Leadership Meeting #4**
- Aledo Growth Committee Meeting #4**
- Aledo Growth Committee Community Meeting #2**

Charrette:

- Review Conceptual Design process and progress - CCA



JAN, FEB, & MAR 2026

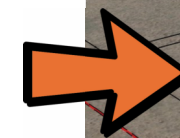
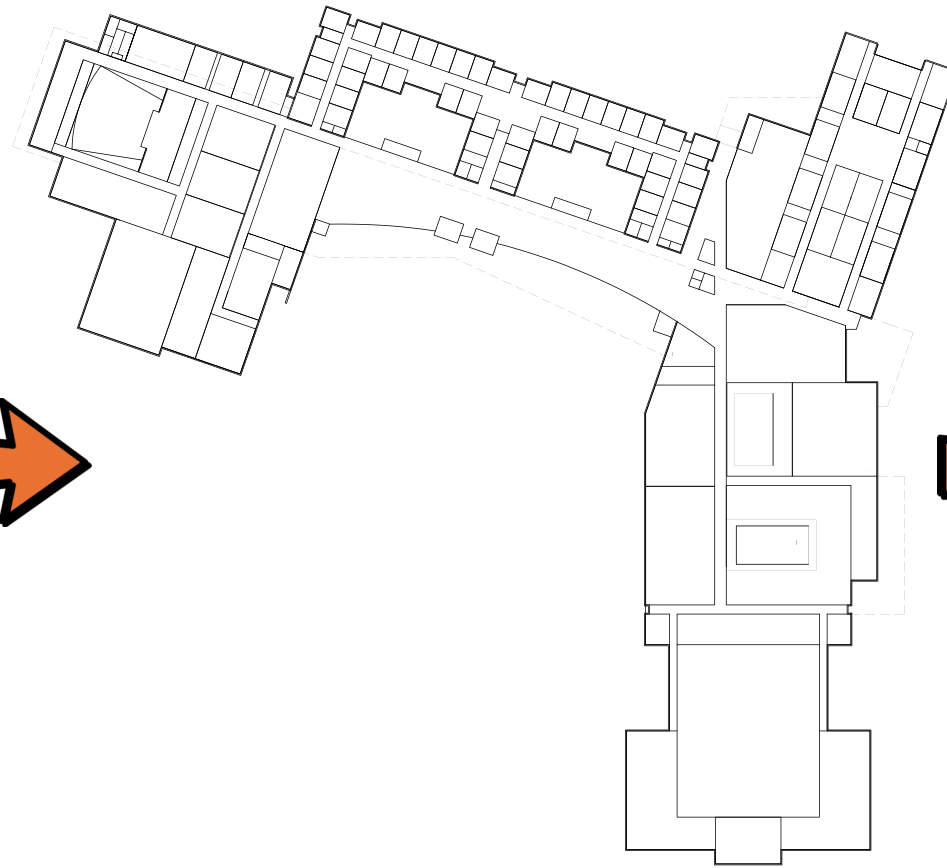
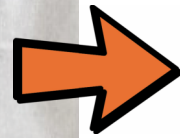
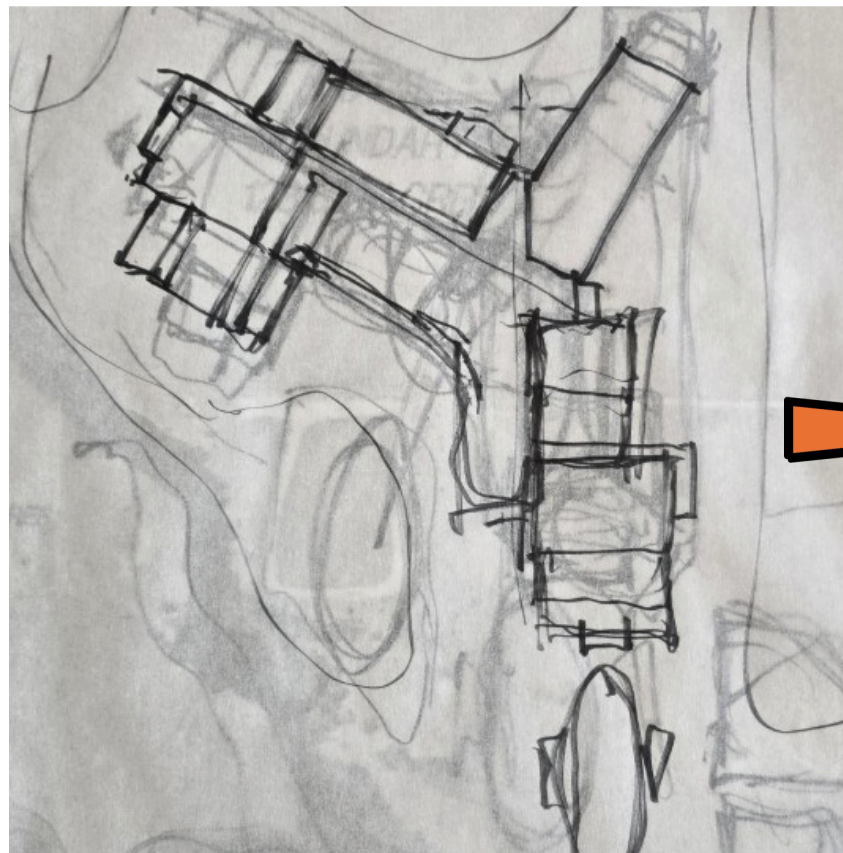


MEETING OBJECTIVES (HS#2):

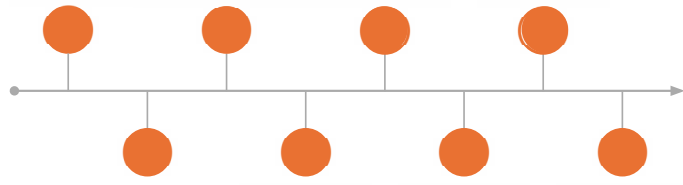
- Aledo ISD Leadership Meeting #4**
- Aledo Growth Committee Meeting #4**
- Aledo Growth Committee Community Meeting #2**

Charrette:

- Review Conceptual Design process and progress - High School #2



APRIL 2026



MEETING OBJECTIVES:

Aledo Growth Committee Meeting #5

Design Review:

- Review Community Feedback
- Review Conceptual Design progress on both High School #2 & College & Career Academy in preparation for board meeting.

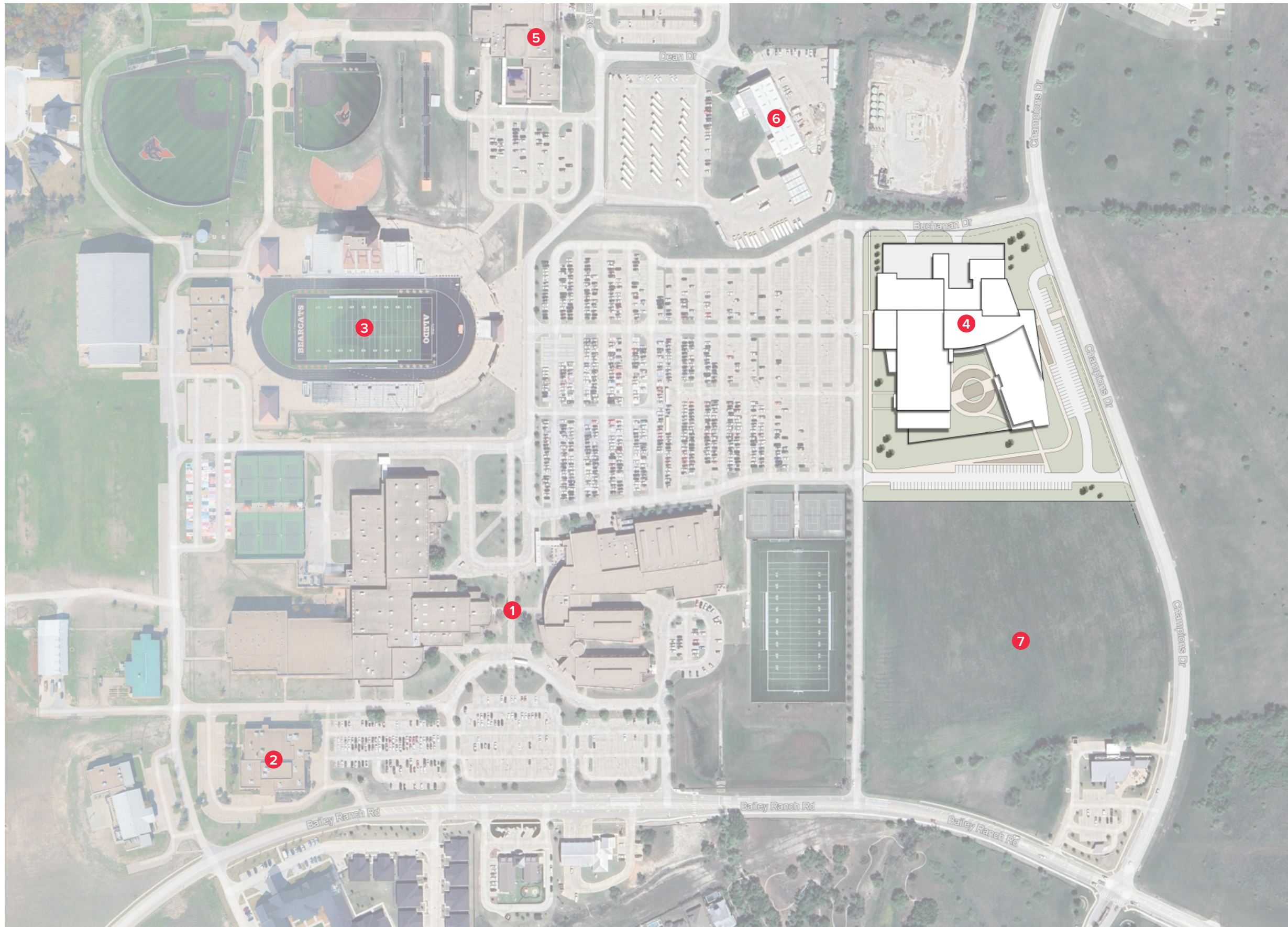




**Community
Feedback**

COLLEGE & CAREER ACADEMY

CONCEPTUAL DESIGN



KEYED LEGEND

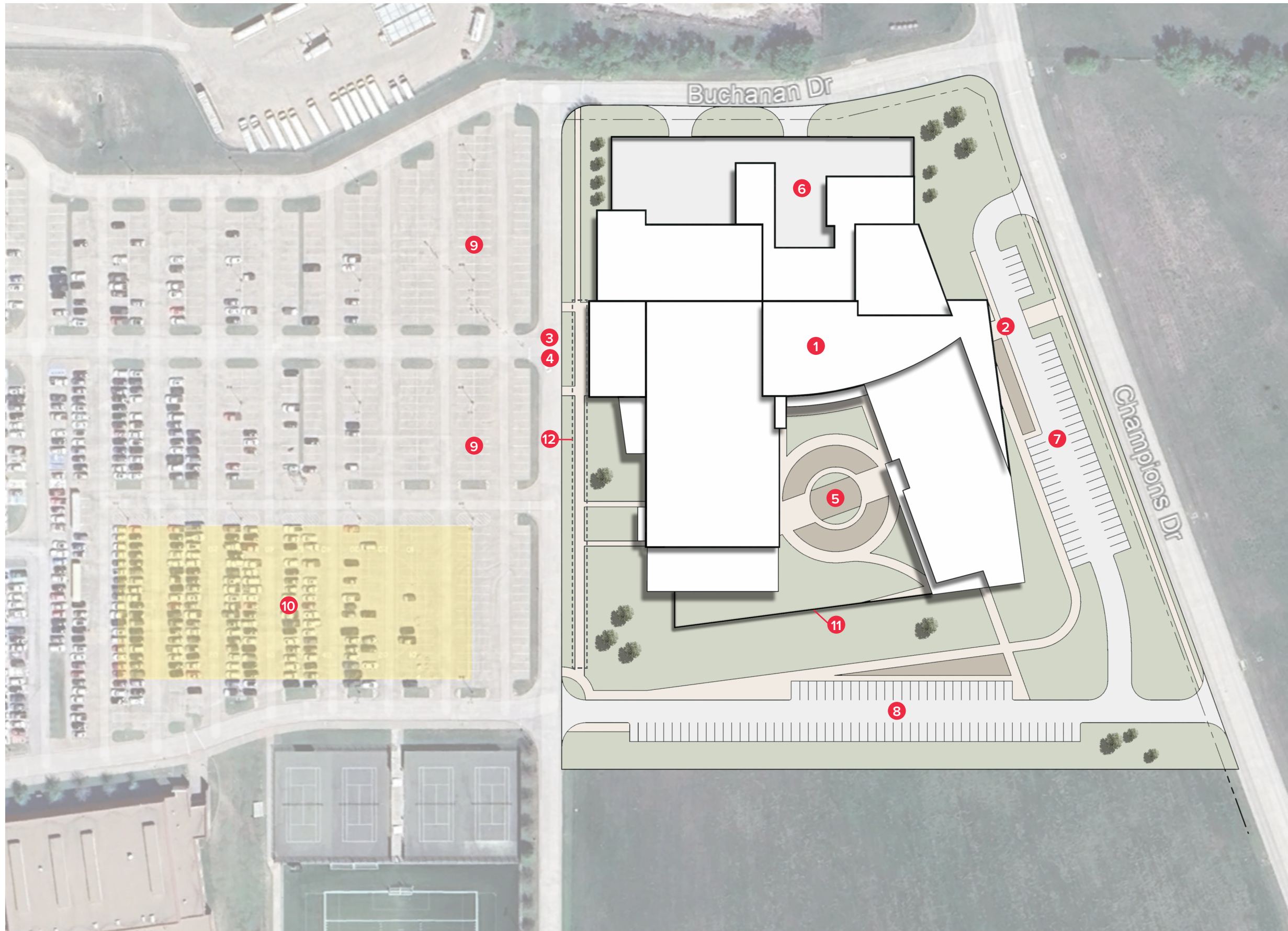
- 1 Aledo High School
- 2 Aledo ISD Administration
- 3 Buchanan Stadium
- 4 College & Career Academy
- 5 Coder Elementary School
- 6 Aledo ISD Auxiliary Building
- 7 Aledo ISD Property

NOT TO SCALE

COLLEGE & CAREER ACADEMY OVERALL CONCEPTUAL SITE PLAN

HIGH SCHOOL #2 AND COLLEGE & CAREER ACADEMY | ALEDO INDEPENDENT SCHOOL DISTRICT

NOT FOR REGULATORY APPROVAL, PERMITTING OR CONSTRUCTION. ARCHITECT OF RECORD TX - JOSHUA COGBURN TX 28423

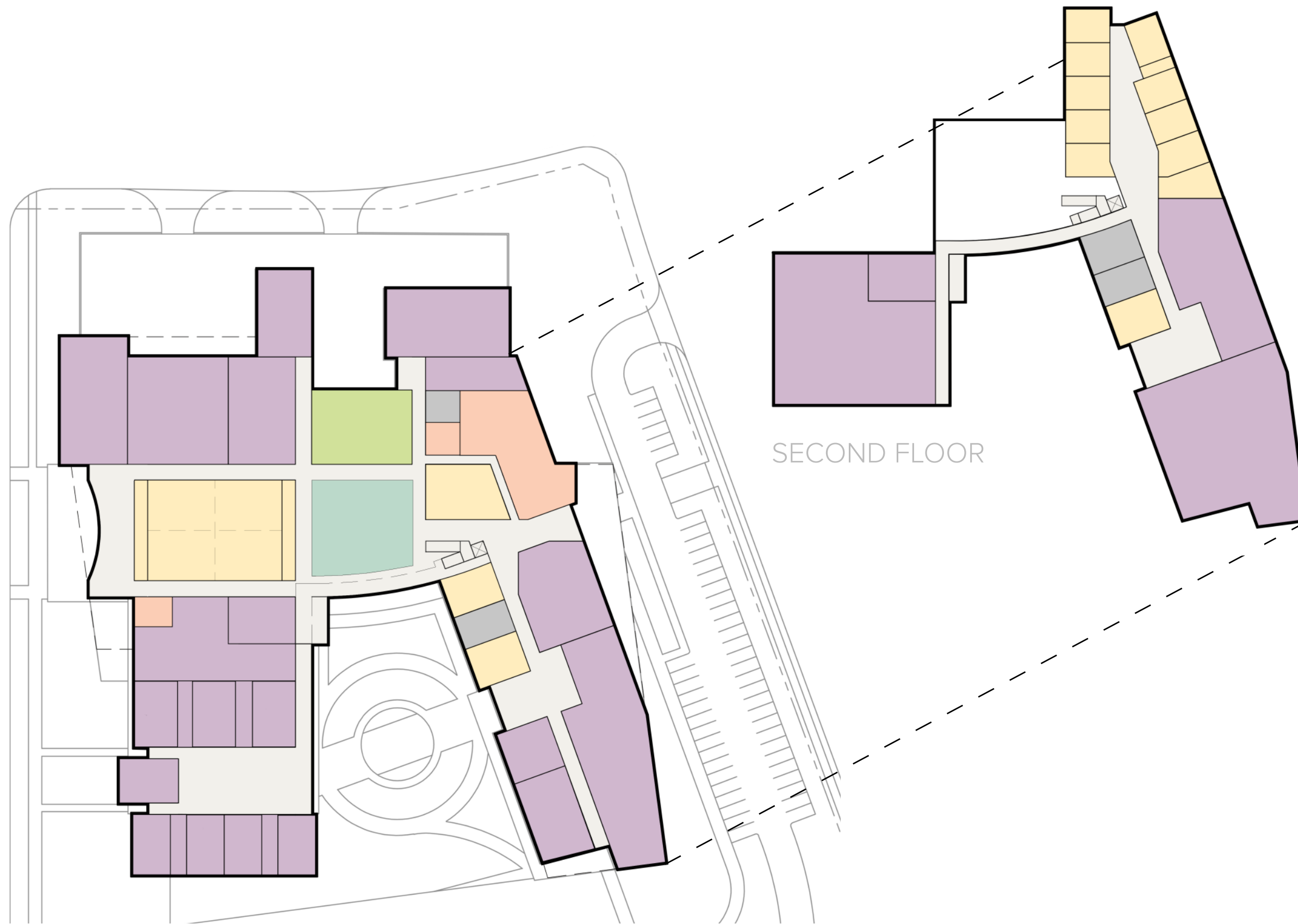


KEYED LEGEND

- 1 College & Career Academy
- 2 Main Entrance
- 3 Event Entrance
- 4 Student Entrance
- 5 Outdoor Learning
- 6 Service Yard
- 7 Visitor Parking
- 8 Staff Parking
- 9 Student/Event Parking
- 10 Existing AHS Band Practice Area
- 11 Security Fence
- 12 Covered Walkway (extended if necessary)



COLLEGE & CAREER ACADEMY CONCEPTUAL SITE PLAN



COLOR LEGEND

- Administration
- Academics
- Kitchen
- Student Union
- Career/Tech
- Restrooms/Support Spaces
- Circulation

Conceptual floor plan does not represent every individual space that will be needed in the building. Each large color program block will be further broken down in future design efforts to account for each program need, circulation, and necessary building and program support spaces.

COLLEGE & CAREER ACADEMY
1,200 STUDENT CAPACITY

Total Gross Area 169,420 sf

FIRST FLOOR

SECOND FLOOR

COLLEGE & CAREER ACADEMY CONCEPTUAL FLOOR PLAN



CONCEPTUAL DESIGN ONLY - SUBJECT TO CHANGE IN THE FUTURE

COLLEGE & CAREER ACADEMY CONCEPTUAL EXTERIOR RENDERING

HIGH SCHOOL #2 AND COLLEGE & CAREER ACADEMY | ALEDO INDEPENDENT SCHOOL DISTRICT

NOT FOR REGULATORY APPROVAL, PERMITTING OR CONSTRUCTION. ARCHITECT OF RECORD TX - JOSHUA COGBURN TX 28423

A landscape photograph showing a wide, open field with a herd of cows grazing in the distance. A large, leafless tree is on the left side of the frame. The sky is blue with some light clouds. The text "HIGH SCHOOL #2" is overlaid in the center of the image.

HIGH SCHOOL #2

CONCEPTUAL DESIGN

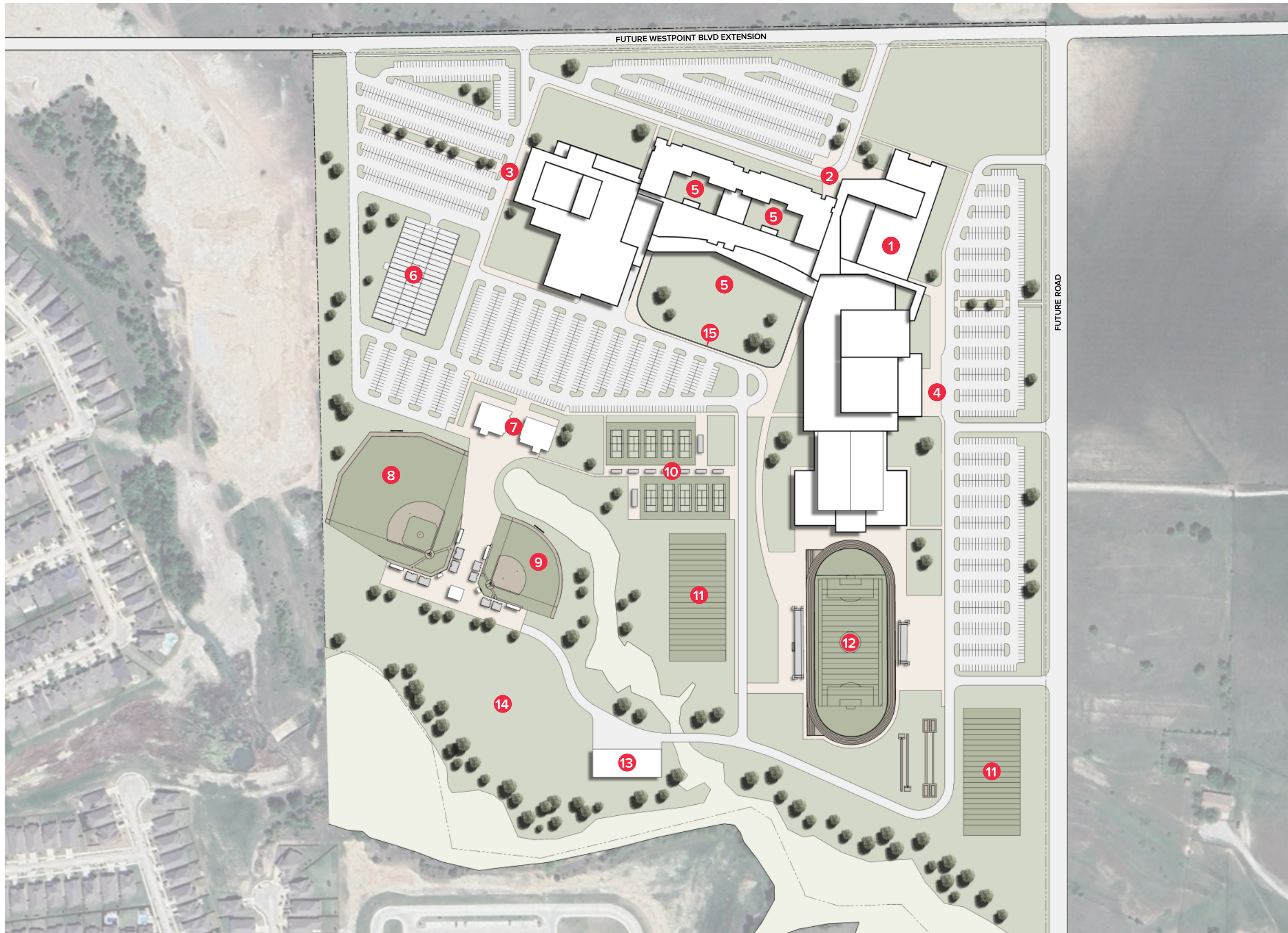


KEYED LEGEND

- 1 High School #2
- 2 Lynn McKinney Elementary
- 3 McAnally Middle School
- 4 Holy Redeemer Catholic Parish
- 5 Morningstar Development



HIGH SCHOOL #2 OVERALL CONCEPTUAL SITE PLAN



KEYED LEGEND

- 1 High School #2
- 2 Main Entrance
- 3 Performing Arts Entrance
- 4 Gymnasium Entrance
- 5 Outdoor Learning
- 6 Band Practice Area
- 7 Multi-Sport Athletic Building
- 8 Baseball Field
- 9 Softball Field
- 10 Tennis Courts
- 11 Practice Field
- 12 Track & Field or Competition Stadium
- 13 Ag Barn
- 14 Animal Pasture
- 15 Security Fence



HIGH SCHOOL #2 CONCEPTUAL SITE PLAN



COLOR LEGEND

- Administration
- Academics
- Kitchen
- Student Union
- Athletics
- Fine Arts
- Career/Tech
- Restrooms/Support Spaces
- Circulation

Conceptual floor plan does not represent every individual space that will be needed in the building. Each large color program block will be further broken down in future design efforts to account for each program need, circulation, and necessary building and program support spaces.

High School #2 Master Plan Design and construction phasing to be determined as needed at time of future bond.

HIGH SCHOOL #2
3,000 STUDENT CAPACITY

Total Gross Area 683,564 sf

HIGH SCHOOL #2 CONCEPTUAL FIRST FLOOR PLAN



THIRD FLOOR

SECOND FLOOR

FIRST FLOOR

COLOR LEGEND

- Administration
- Academics
- Kitchen
- Student Union
- Athletics
- Fine Arts
- Career/Tech
- Circulation
- Restrooms/Support Spaces

Conceptual floor plan does not represent every individual space that will be needed in the building. Each large color program block will be further broken down in future design efforts to account for each program need, circulation, and necessary building and program support spaces.

High School #2 Master Plan Design and construction phasing to be determined as needed at time of future bond.

HIGH SCHOOL #2 CONCEPTUAL SECOND & THIRD FLOOR PLANS



CONCEPTUAL DESIGN ONLY - SUBJECT TO CHANGE IN THE FUTURE

HIGH SCHOOL #2 CONCEPTUAL EXTERIOR RENDERING

HIGH SCHOOL #2 AND COLLEGE & CAREER ACADEMY | ALEDO INDEPENDENT SCHOOL DISTRICT

NOT FOR REGULATORY APPROVAL, PERMITTING OR CONSTRUCTION. ARCHITECT OF RECORD TX - JOSHUA COGBURN TX 28423



Thank you!

